
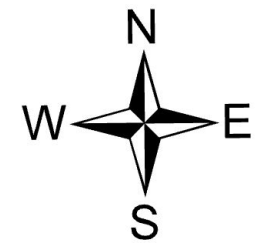

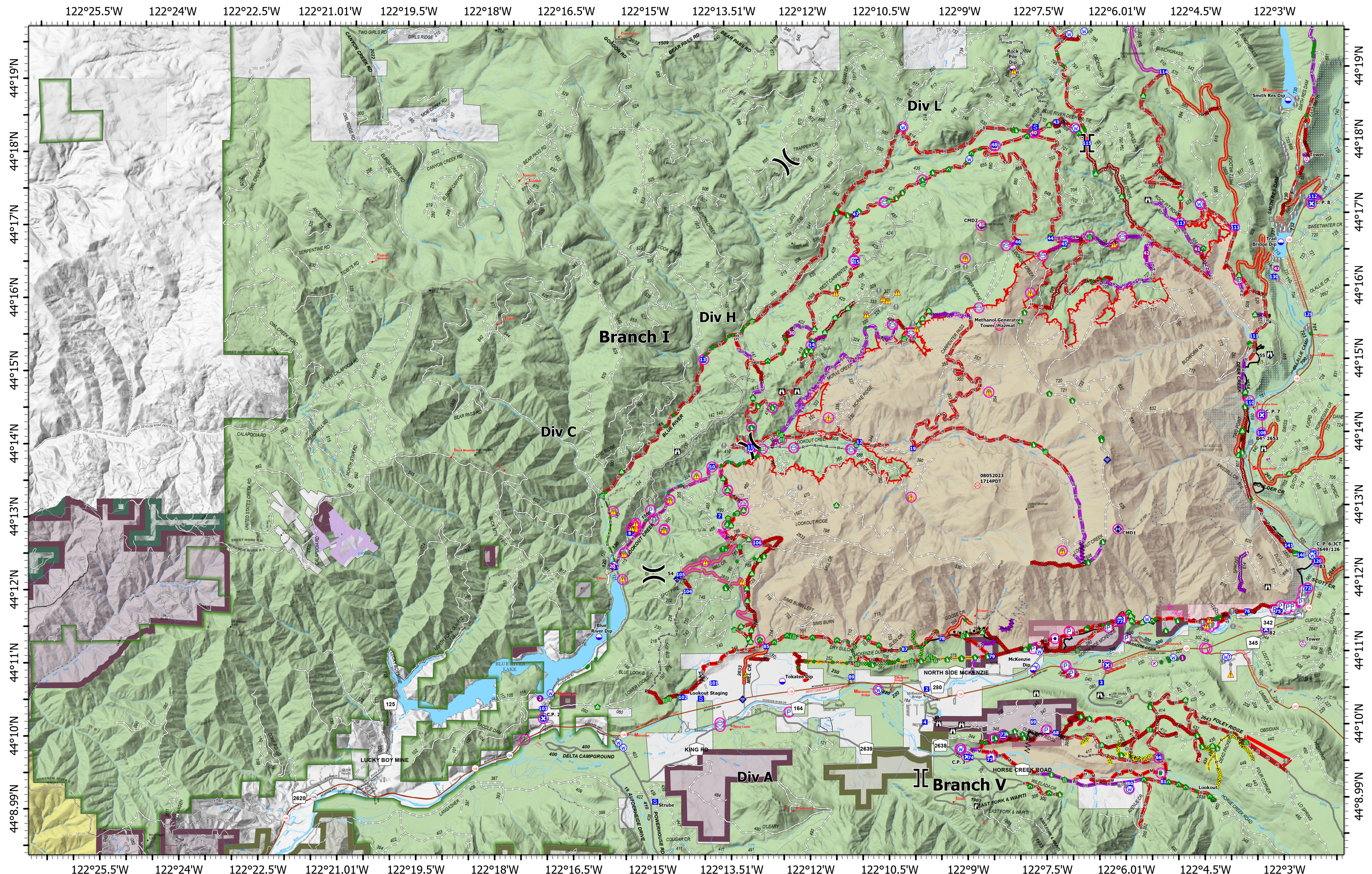


Repair Div A	<h1>Repair</h1> <h2>Lookout</h2> <h3>ORWIF-230327</h3> <h4>09/18/2023</h4> <p><i>Acres from IR & GPS</i> 25,174 acres at 9/17/2023 @ 1045</p>		<ul style="list-style-type: none"> ○ In Use - Fire Management ○ In Use - Fire Management ○ Needs Assessment ○ Repair Needed ○ In Progress ○ Completed - Ready for Inspection ○ Completed - Inspected ○ No Repair Needed 	<ul style="list-style-type: none"> ○ In Use - Fire Management ○ Repair Needed ○ Airstrip or Airport ○ Dip Site ○ Helispot ○ Division Break ○ Branch Break ○ Drop Point ○ Closure 	<ul style="list-style-type: none"> S Staging Area L Lookout ● Hot Spot - Spot Fire ⊗ Fire Origin ● Value at Risk ● Other ⊗ Gate ⊗ Bridge ⊗ Water Development or Draft Site 	<ul style="list-style-type: none"> ⊗ Stream Crossing ⊗ Road Repair ⊗ Resource Location ⊗ Repair Point ⊗ Landing or Log Deck ⊗ Hazard Tree ⊗ Dozer Push ⊗ Culvert ⊗ Clean Up Area ⊗ Mobile Weather Unit 	<ul style="list-style-type: none"> ⊗ Internet Access ⊗ Repeater ⊗ Safety Zone ⊗ Hazard ⊗ Water Source ⊗ Other Property P Pump ⊗ Water Tank ⊗ Completed Burnout 	<ul style="list-style-type: none"> ⊗ Completed Dozer Line ⊗ Completed Fuel Break ⊗ Completed Hand Line ⊗ Completed Mixed Construction Line ⊗ Completed Road as Line ⊗ Planned Dozer Line ⊗ Access or Improved Road ⊗ Fence 	<ul style="list-style-type: none"> ⊗ Other ⊗ Repair Line ⊗ Road Repair ⊗ Retardant Drop ⊗ UAS Launch and Recovery Zone ⊗ Contained ⊗ Uncontained Fire Edge ⊗ Wildfire Daily Fire Perimeter 	<ul style="list-style-type: none"> ⊗ Franklin-Clarkson Timber Co LLC ⊗ Giustina (Winberry) ⊗ Oregon Dept of State Lands 				Repair Div A
											<p>9/17/2023 2104</p> <p>North American 1983 Datum. LatLong Grid</p> <p>0 0.25 0.5 1 1.5 Miles</p>			



Repair
Div C/Div H

Repair

Lookout


ORWIF-230327

09/18/2023

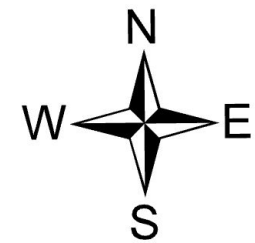
Acres from IR & GPS

25,174 acres at 9/17/2023 @ 1045

<ul style="list-style-type: none"> ○ In Use - Fire Management ○ In Use - Fire Management ○ Needs Assessment ○ In Progress ○ Completed - Ready for Inspection ○ Completed - Inspected 	<ul style="list-style-type: none"> ○ No Repair Needed ○ In Use - Fire Management ○ Repair Needed ○ Other - See Comments ○ Aerial Hazard ○ Airstrip or Airport ○ Dip Site ○ Helispot ○ Sling Site 	<ul style="list-style-type: none"> () Division Break [] Branch Break ■ Drop Point ⊠ Closure ⊞ Staging Area ⊞ Lookout ⊞ Hot Spot - Spot Fire ⊞ Fire Origin ⊞ Value at Risk 	<ul style="list-style-type: none"> ● Other ⊞ Gate ⊞ Bridge ⊞ Water Development or Draft Site ⊞ Structure Wrap ⊞ Stream Crossing ⊞ Road Repair ⊞ Resource Location ⊞ Repair Point 	<ul style="list-style-type: none"> ⚠ Hazard ⊞ Water Source ⊞ Other Property ⊞ Pump ⊞ Water Tank ⊞ Completed Burnout ⊞ Completed Dozer Line ⊞ Completed Fuel Break ⊞ Completed Hand Line 	<ul style="list-style-type: none"> — Completed Mixed Construction Line — Completed Road as Line — Planned Dozer Line — Access or Improved Road — Fence — Other — Repair Line — Road Repair 	<ul style="list-style-type: none"> — Retardant Drop — UAS Launch and Recovery Zone — Contained — Uncontained Fire Edge — Wildfire Daily Fire Perimeter — Cadore Timber Co — Franklin-Clarkson Timber Co LLC 	<ul style="list-style-type: none"> ■ Giustina (Winberry) ■ Oregon Dept of State Lands ■ Weyerhaeuser Timber Holdings Inc
---	--	--	---	--	--	---	---




N
W E
S



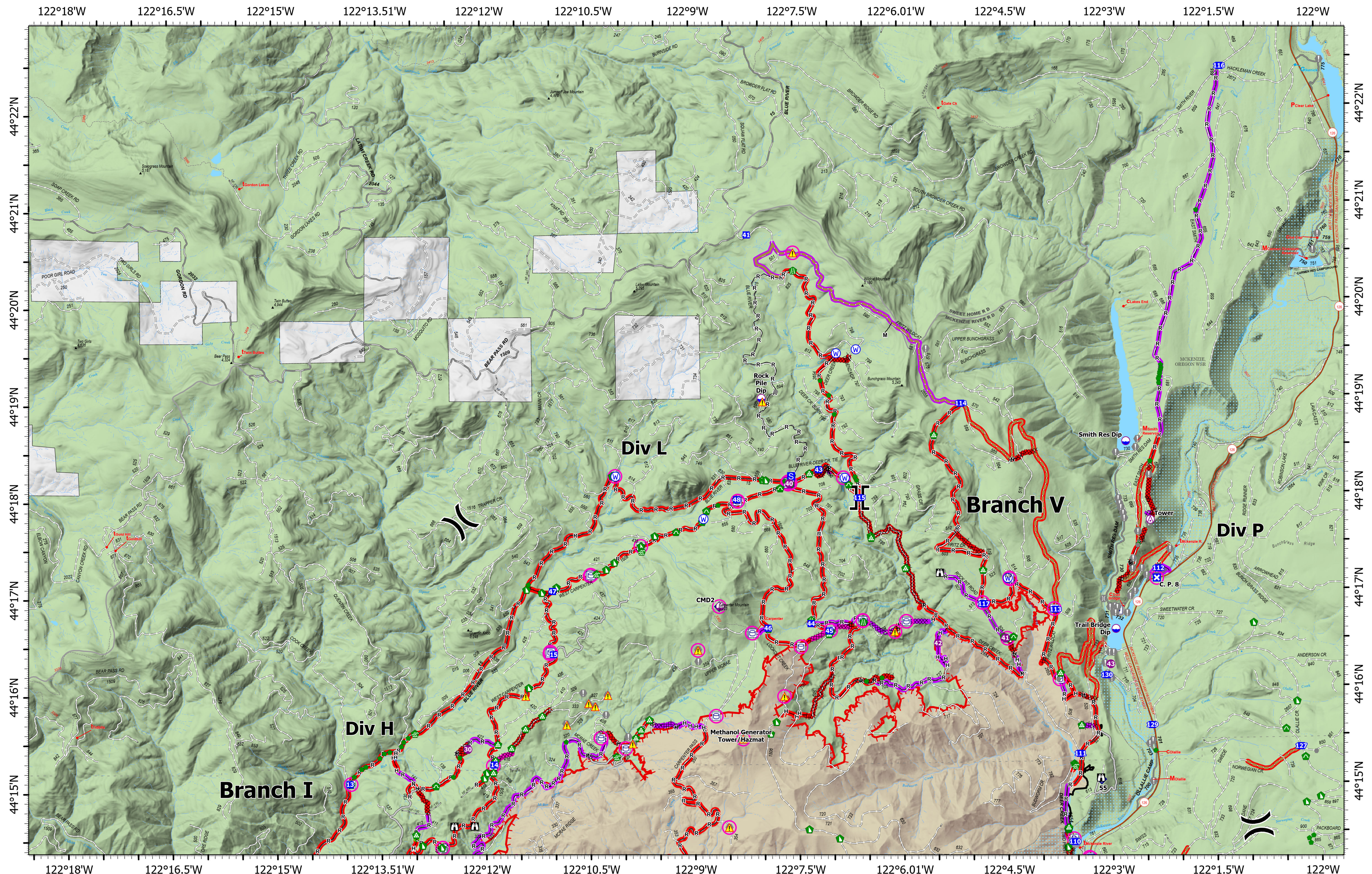
9/17/2023 2106

North American 1983 Datum. LatLong Grid

0 0.250.5 1 1.5 2 Miles



Repair
Div C/Div H



**Repair
Div L**

Repair
Lookout
ORWIF-230327
09/18/2023
Acres from IR & GPS
25,174 acres at 9/17/2023 @ 1045

- In Use - Fire Management
- In Use - Fire Management
- Needs Assessment
- Repair Needed
- Completed - Inspected
- No Repair Needed
- Other - See Comments
- ⊙ Aerial Hazard
- ⊙ Dip Site
- ⊙ Helispot
- ⊙ Sling Site
-) Division Break

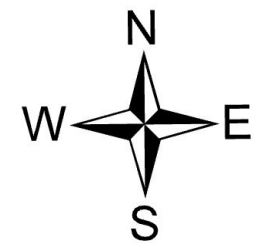
- II Branch Break
- X Drop Point
- S Closure
- S Staging Area
- L Lookout
- V Value at Risk
- Other
- B Bridge

- ⬆ Water Development or Draft Site
- ⬆ Road Repair
- ⬆ Repair Point
- ⬆ Landing or Log Deck
- ⬆ Dozer Push
- ⬆ Sling Site
- ⬆ Mobile Weather Unit

- ⬆ Repeater
- ⬆ Hazard
- ⬆ Water Source
- ⬆ Other Property
- ⬆ Pump
- ⬆ Water Tank
- ⬆ Completed Dozer Line
- ⬆ Completed Fuel Break

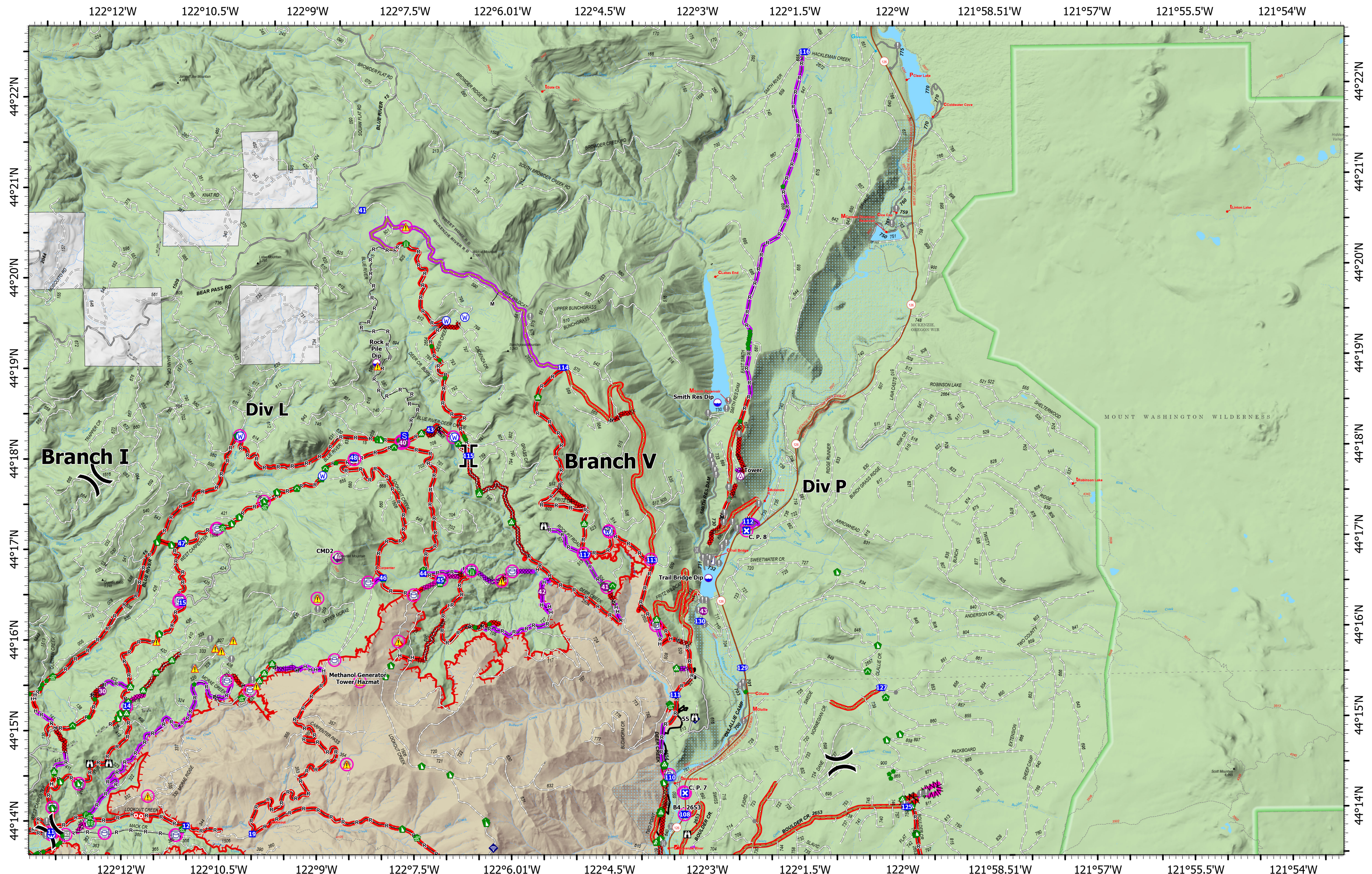
- Completed Hand Line
- Completed Mixed Construction Line
- Completed Road as Line
- Access or Improved Road
- Other
- Culvert
- Repair Line
- Road Repair


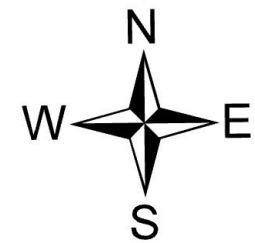

- Contained
- Uncontained Fire Edge
- Wildfire Daily Fire Perimeter

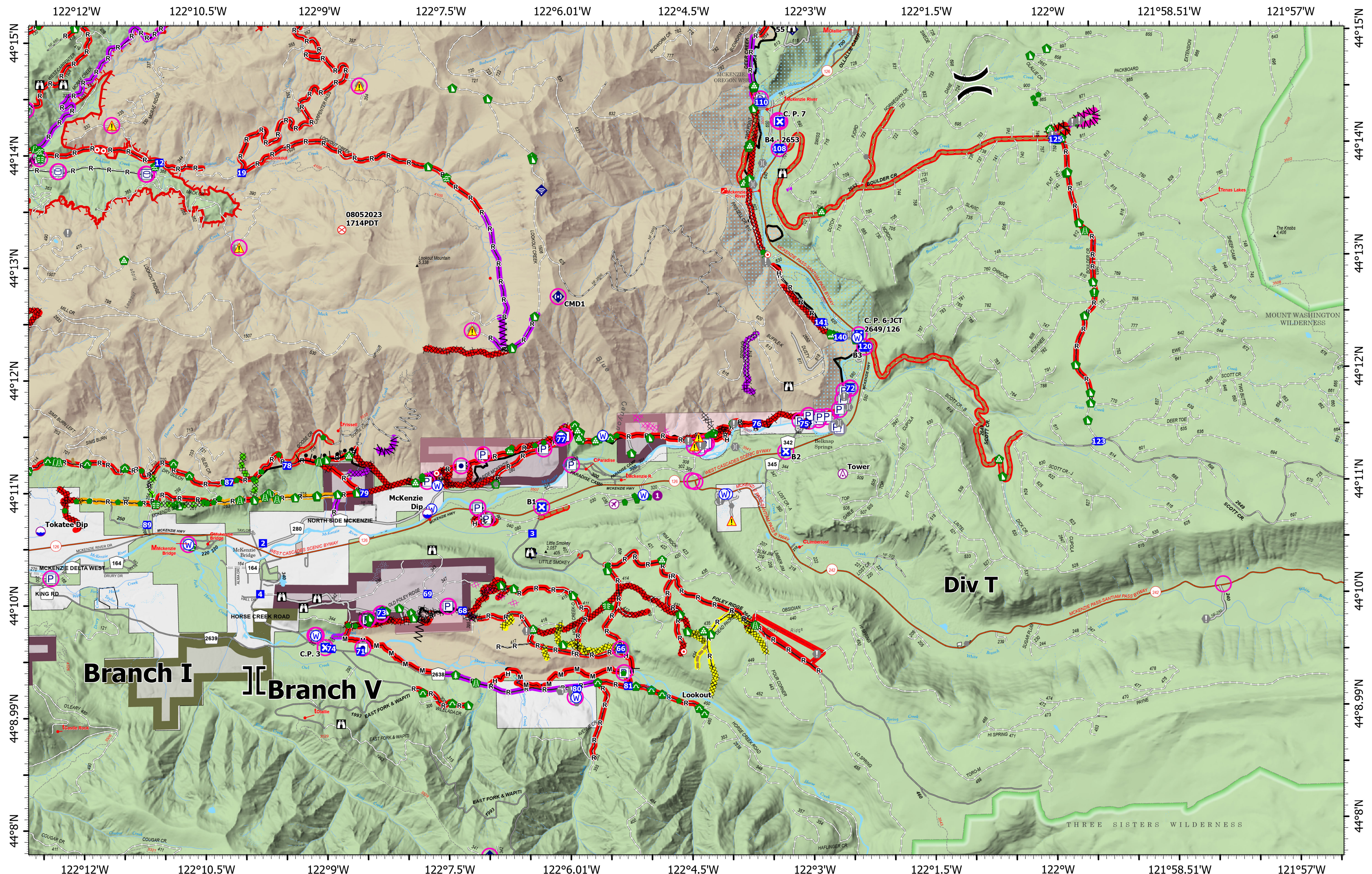



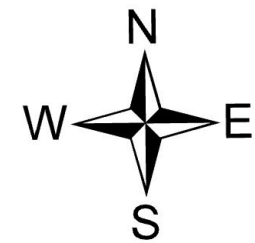

9/17/2023 2110
 North American 1983 Datum. LatLong Grid
 0 0.25 0.5 1 1.5
 Miles

**Repair
Div L**



Repair Div P	<h1>Repair</h1> <h2>Lookout</h2> <h3>ORWIF-230327</h3> <p>09/18/2023</p> <p><i>Acres from IR & GPS</i></p> <p>25,174 acres at 9/17/2023 @ 1045</p>	<ul style="list-style-type: none"> ○ In Use - Fire Management ◐ In Use - Fire Management ◑ Needs Assessment — Repair Needed — Completed - Inspected — No Repair Needed ○ In Use - Fire Management 	<ul style="list-style-type: none"> ● Other - See Comments ○ Dip Site ● Helispot ○ Sling Site) Division Break Branch Break Drop Point Closure 	<ul style="list-style-type: none"> S Staging Area ⦿ Lookout ⦿ Hot Spot - Spot Fire ⦿ Value at Risk ⦿ Other ⦿ Gate ⦿ Bridge ⦿ Water Development or Draft Site 	<ul style="list-style-type: none"> ⦿ Stream Crossing ⦿ Road Repair ⦿ Repair Point ⦿ Landing or Log Deck ⦿ Fence - Cut/Damaged ⦿ Dozer Push ⦿ Culvert ⦿ Mobile Weather Unit ⦿ Internet Access 	<ul style="list-style-type: none"> ⦿ Repeater ⦿ Hazard ⦿ Water Source ⦿ Other Property ⦿ Pump ⦿ Water Tank ⦿ Completed Dozer Line ⦿ Completed Fuel Break ⦿ Completed Hand Line 	<ul style="list-style-type: none"> — Completed Mixed Construction Line — Completed Road as Line — Access or Improved Road — Other — Repair Line — Road Repair — UAS Launch and Recovery Zone 	<ul style="list-style-type: none"> — Contained — Uncontained Fire Edge — Wildfire Daily Fire Perimeter 		<div style="text-align: center;">  <p>9/17/2023 2113</p> <p>North American 1983 Datum. LatLong Grid</p> <p>0 0.25 0.5 1 1.5 Miles</p> </div>		Repair Div P
-------------------------------	---	---	--	---	---	---	---	--	---	---	---	-------------------------------



Repair Div T	<h1>Repair</h1> <h2>Lookout</h2> <h3>ORWIF-230327</h3> <h4>09/18/2023</h4> <p><i>Acres from IR & GPS</i> 25,174 acres at 9/17/2023 @ 1045</p>		<ul style="list-style-type: none"> ○ In Use - Fire Management ○ In Use - Fire Management ○ Needs Assessment ○ Repair Needed ○ In Progress ○ Completed - Ready for Inspection ○ Completed - Inspected ○ No Repair Needed 	<ul style="list-style-type: none"> ○ In Use - Fire Management ○ Repair Needed ○ Other - See Comments ○ Aerial Hazard ○ Airstrip or Airport ○ Dip Site ○ Helispot) Division Break] Branch Break 	<ul style="list-style-type: none"> ■ Drop Point ⊠ Closure ⊠ Lookout ⊠ Hot Spot - Spot Fire ⊠ Fire Origin ⊠ Value at Risk ⊠ Other ⊠ Gate ⊠ Bridge 	<ul style="list-style-type: none"> ⬆ Water Development or Draft Site ⬆ Structure Wrap ⬆ Stream Crossing ⬆ Road Repair ⬆ Resource Location ⬆ Repair Point ⬆ Landing or Log Deck ⬆ Hazard Tree ⬆ Fence - Cut/Damaged 	<ul style="list-style-type: none"> ⬆ Dozer Push ⬆ Clean Up Area ⬆ Mobile Weather Unit ⬆ Internet Access ⬆ Repeater ⬆ Hazard ⬆ Water Source ⬆ Other Property 	<ul style="list-style-type: none"> ⊠ Pump ⊠ Water Tank ⊠ Completed Burnout ⊠ Completed Dozer Line ⊠ Completed Fuel Break ⊠ Completed Hand Line ⊠ Completed Mixed Construction Line ⊠ Completed Road as Line ⊠ Planned Dozer Line 	<ul style="list-style-type: none"> — Access or Improved Road — Fence — Other — Repair Line — Road Repair — Retardant Drop — UAS Launch and Recovery Zone — Contained 	<ul style="list-style-type: none"> — Uncontained Fire Edge — Wildfire Daily Fire Perimeter — Franklin-Clarkson Timber Co LLC — Giustina (Winberry) 		<div style="text-align: center;">  <p>9/17/2023 2115</p> <p>North American 1983 Datum. LatLong Grid</p> <p>0 0.25 0.5 1 1.5 Miles</p> </div>		Repair Div T
-------------------------------	---	--	--	--	---	--	---	---	---	--	---	---	---	-------------------------------