

Operations  
Div A

# Operations

Lookout

ORWIF-230327

09/19/2023

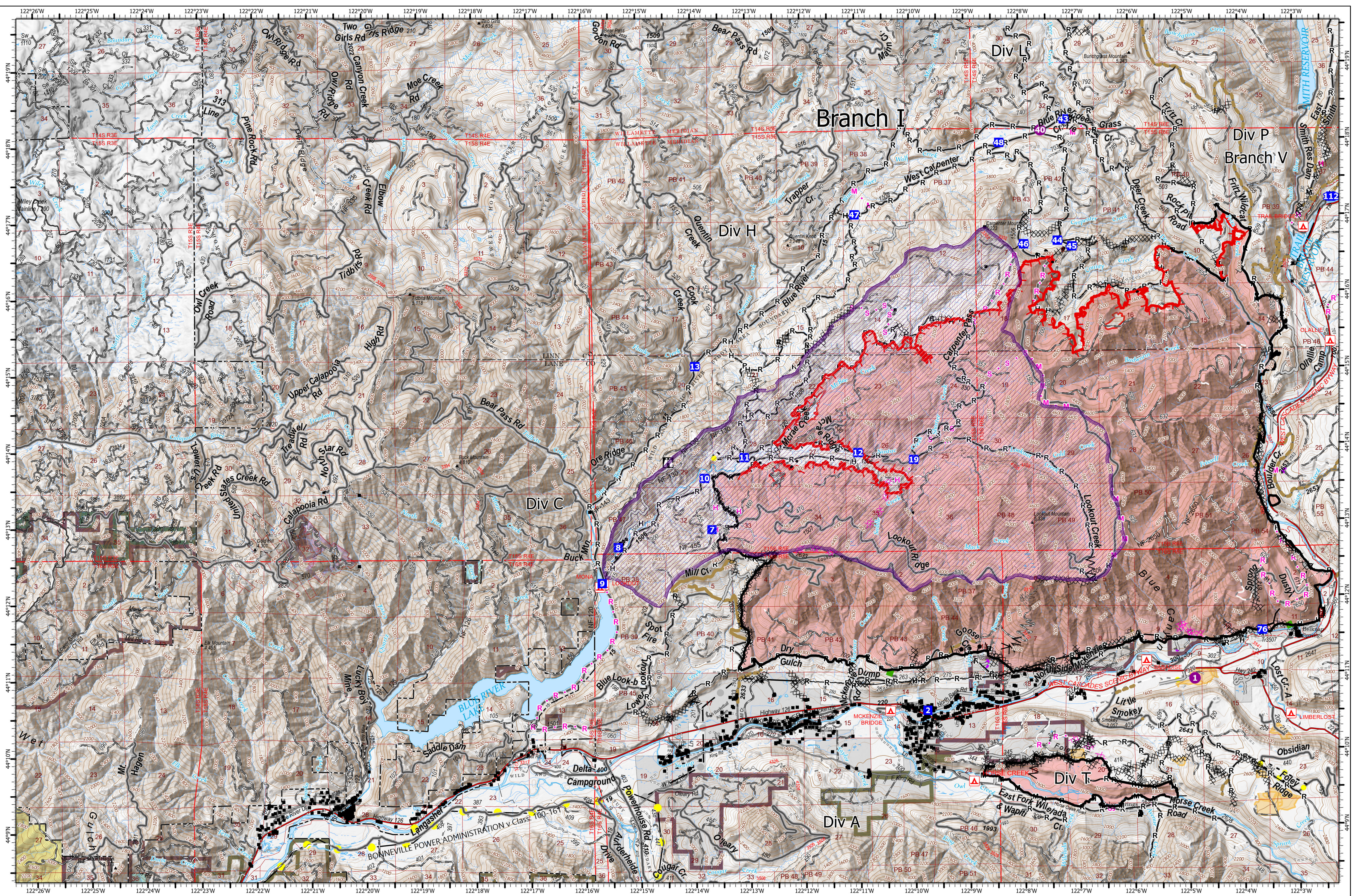
25,515 acres at 9/17/2023 @ 2105  
Acres from IR & GPS

- |  |  |  |   |   |  |
|--|--|--|---|---|--|
| <ul style="list-style-type: none"> <li><span style="color: purple;">●</span> Helispot</li> <li><span style="color: blue;">■</span> Drop Point</li> <li><span style="border: 1px solid black; display: inline-block; width: 10px; height: 10px;"></span> Completed Burnout</li> <li><span style="border-bottom: 1px dashed black; width: 10px; display: inline-block;"></span> Completed Dozer Line</li> <li><span style="border-bottom: 1px solid black; width: 10px; display: inline-block;"></span> Completed Fuel Break</li> <li><span style="border-bottom: 1px solid black; width: 10px; display: inline-block;"></span> Completed Hand Line</li> </ul> | <ul style="list-style-type: none"> <li><span style="border-bottom: 1px solid black; width: 10px; display: inline-block;"></span> Completed Mixed Construction Line</li> <li><span style="border-bottom: 1px solid black; width: 10px; display: inline-block;"></span> Completed Road as Line</li> <li><span style="border-bottom: 1px dashed black; width: 10px; display: inline-block;"></span> Planned Dozer Line</li> <li><span style="border-bottom: 1px solid black; width: 10px; display: inline-block;"></span> Planned Hand Line</li> <li><span style="border-bottom: 1px solid black; width: 10px; display: inline-block;"></span> Planned Mixed Construction Line</li> <li><span style="border-bottom: 1px solid black; width: 10px; display: inline-block;"></span> Planned Road as Line</li> </ul> | <ul style="list-style-type: none"> <li><span style="border-bottom: 1px solid black; width: 10px; display: inline-block;"></span> Access or Improved Road</li> <li><span style="border-bottom: 1px dashed black; width: 10px; display: inline-block;"></span> Highlighted Feature</li> <li><span style="border-bottom: 1px solid black; width: 10px; display: inline-block;"></span> Other</li> <li><span style="border-bottom: 1px solid black; width: 10px; display: inline-block;"></span> Repair Line</li> <li><span style="border-bottom: 1px solid black; width: 10px; display: inline-block;"></span> Road Repair</li> <li><span style="border-bottom: 1px solid black; width: 10px; display: inline-block;"></span> Escape Route</li> </ul> | <ul style="list-style-type: none"> <li><span style="border-bottom: 1px solid black; width: 10px; display: inline-block;"></span> UAS Launch and Recovery Zone</li> <li><span style="border-bottom: 1px solid black; width: 10px; display: inline-block;"></span> Fire Area</li> <li><span style="border-bottom: 1px solid black; width: 10px; display: inline-block;"></span> Previous RX Burn</li> <li><span style="border-bottom: 1px solid black; width: 10px; display: inline-block;"></span> Cadore Timber Co</li> <li><span style="border-bottom: 1px solid black; width: 10px; display: inline-block;"></span> Franklin-Clarkson Timber Co LLC</li> <li><span style="border-bottom: 1px solid black; width: 10px; display: inline-block;"></span> Fruit Growers Supply Co Inc</li> </ul> | <ul style="list-style-type: none"> <li><span style="border-bottom: 1px solid black; width: 10px; display: inline-block;"></span> Giustina (Winberry)</li> <li><span style="border-bottom: 1px solid black; width: 10px; display: inline-block;"></span> Government Unspecified</li> <li><span style="border-bottom: 1px solid black; width: 10px; display: inline-block;"></span> Oregon Dept of State Lands</li> <li><span style="border-bottom: 1px solid black; width: 10px; display: inline-block;"></span> Pangaea Pacific Timberlands LLC</li> <li><span style="border-bottom: 1px solid black; width: 10px; display: inline-block;"></span> US Bureau of Land Management</li> <li><span style="border-bottom: 1px solid black; width: 10px; display: inline-block;"></span> US Forest Service</li> </ul> | <ul style="list-style-type: none"> <li><span style="border-bottom: 1px solid black; width: 10px; display: inline-block;"></span> Waning Family LLC</li> <li><span style="border-bottom: 1px solid black; width: 10px; display: inline-block;"></span> Weyerhaeuser Timber Holdings Inc</li> <li><span style="border-bottom: 1px solid black; width: 10px; display: inline-block;"></span> De-Energized Transmission Line</li> <li><span style="border-bottom: 1px solid black; width: 10px; display: inline-block;"></span> Energized Transmission Line</li> </ul> |
|--|--|--|---|---|--|



9/18/2023 2120  
North American 1983 Datum, Lat/Long Grid  
0 1 2 Miles

Operations  
Div A



Operations  
Div C/Div H

# Operations

## Lookout

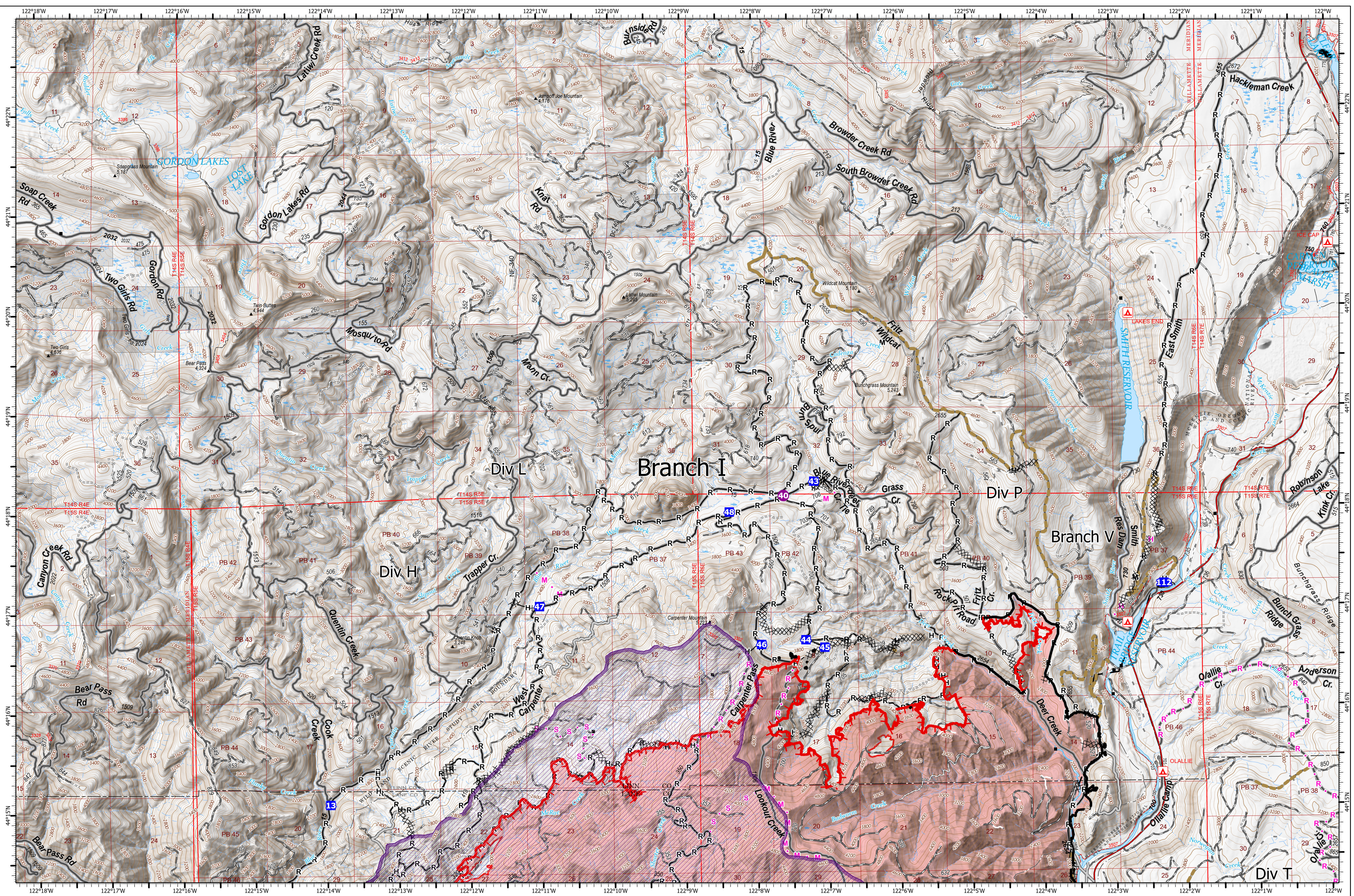
ORWIF-230327  
09/19/2023  
25,515 acres at 9/17/2023 @ 2105  
Acres from IR & GPS

- |                        |                                     |                           |                                   |                                   |                                    |
|------------------------|-------------------------------------|---------------------------|-----------------------------------|-----------------------------------|------------------------------------|
| ● Helispot             | — Completed Mixed Construction Line | — Access or Improved Road | — UAS Launch and Recovery Zone    | — Giustina (Winberry)             | — Waning Family LLC                |
| ■ Drop Point           | — Completed Road as Line            | ● Highlighted Feature     | — Fire Area                       | — Government Unspecified          | — Weyerhaeuser Timber Holdings Inc |
| ⊠ Lookout              | ✕ Planned Dozer Line                | — Other                   | — Previous RX Burn                | — Oregon Dept of State Lands      | — De-Energized Transmission Line   |
| ⊠ Completed Burnout    | — Planned Hand Line                 | — Repair Line             | — Cadore Timber Co                | — Pangaea Pacific Timberlands LLC | ● Energized Transmission Line      |
| ⊠ Completed Dozer Line | — Planned Mixed Construction Line   | — Road Repair             | — Franklin-Clarkson Timber Co LLC | — US Bureau of Land Management    |                                    |
| ⊠ Completed Fuel Break | — Planned Road as Line              | — Escape Route            | — Fruit Growers Supply Co Inc     | — US Forest Service               |                                    |
| — Completed Hand Line  |                                     |                           |                                   |                                   |                                    |

9/18/2023 2113  
North American 1983 Datum. Lat/Long Grid

0 1 2 Miles

Operations  
Div C/Div H



Operations  
Div L

# Operations

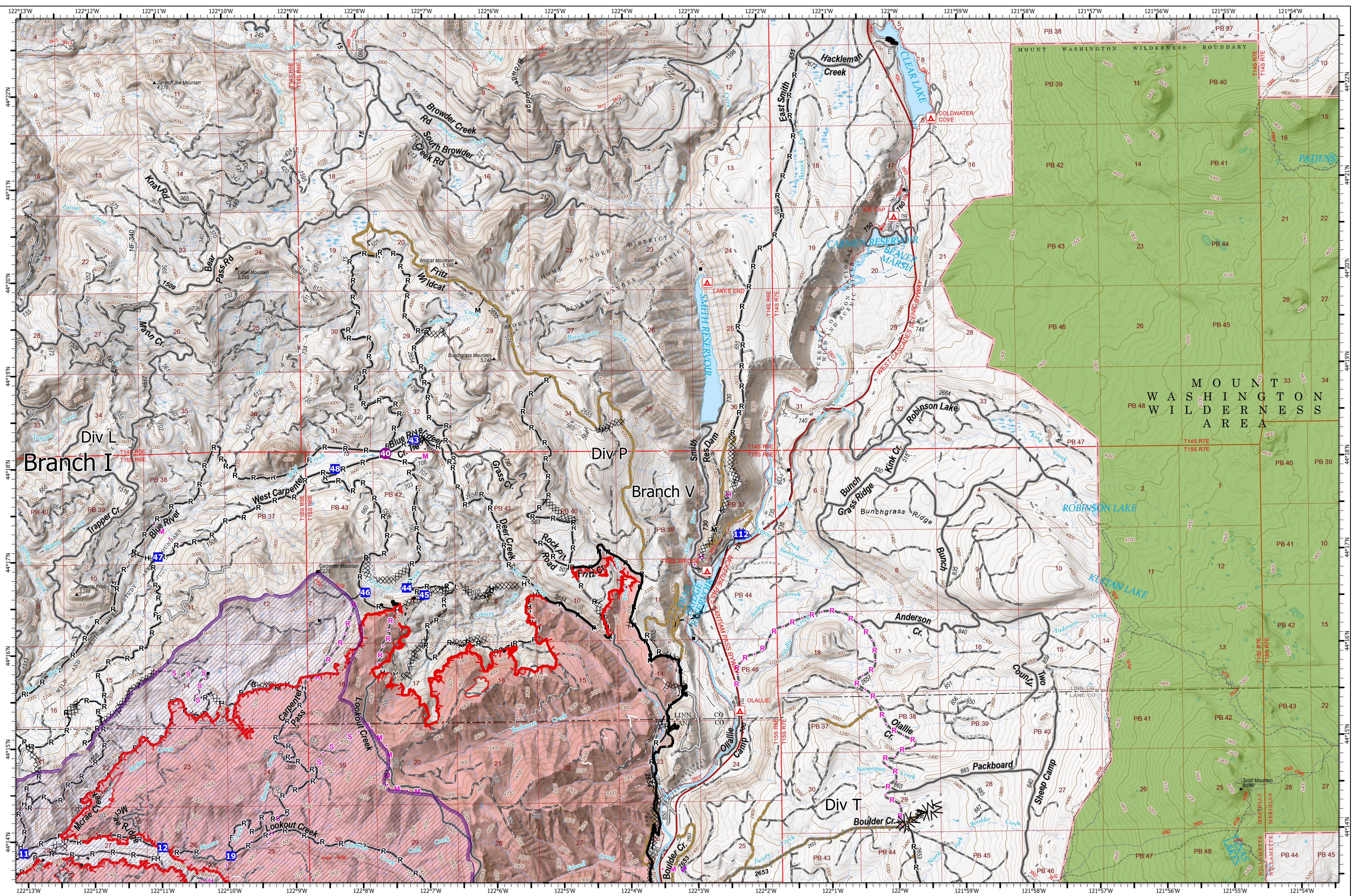
Lookout  
ORWIF-230327  
09/19/2023  
25,515 acres at 9/17/2023 @ 2105  
Acres from IR & GPS

- |                                     |                                   |                                   |                                   |                                    |
|-------------------------------------|-----------------------------------|-----------------------------------|-----------------------------------|------------------------------------|
| ● Hellspot                          | — Completed Road as Line          | --- Other                         | ■ Fruit Growers Supply Co Inc     | ■ US Bureau of Land Management     |
| ■ Drop Point                        | — Planned Hand Line               | — Repair Line                     | ■ Giustina (Winberry)             | ■ US Forest Service                |
| ⊗ Completed Dozer Line              | — Planned Mixed Construction Line | — Road Repair                     | ■ Government Unspecified          | ■ Waning Family LLC                |
| ∧ Completed Fuel Break              | — Planned Road as Line            | — Fire Area                       | ■ Oregon Dept of State Lands      | ■ Weyerhaeuser Timber Holdings Inc |
| — Completed Hand Line               | — Planned Secondary Line          | — Cadore Timber Co                | ■ Pangaea Pacific Timberlands LLC | ■ De-Energized Transmission Line   |
| — Completed Mixed Construction Line | — Access or Improved Road         | ■ Franklin-Clarkson Timber Co LLC |                                   |                                    |



9/18/2023 2114  
North American 1983 Datum, Lat/Long Grid  
0 1 2 Miles

Operations  
Div L



Operations  
Div P

# Operations

## Lookout

ORWIF-230327  
09/19/2023  
25,515 acres at 9/17/2023 @ 2105  
Acres from IR & GPS

- |                                     |                                   |                                |                                   |                                   |                                    |
|-------------------------------------|-----------------------------------|--------------------------------|-----------------------------------|-----------------------------------|------------------------------------|
| ● Helispot                          | — Completed Road as Line          | — Access or Improved Road      | ■ Fire Area                       | ■ Oregon Dept of State Lands      | ■ Weyerhaeuser Timber Holdings Inc |
| ■ Drop Point                        | ✖ Planned Dozer Line              | ● Highlighted Feature          | ■ Cadore Timber Co                | ■ Pangaea Pacific Timberlands LLC | ■ De-Energized Transmission Line   |
| ✖ Completed Dozer Line              | — Planned Hand Line               | — Other                        | ■ Franklin-Clarkson Timber Co LLC | ■ US Bureau of Land Management    |                                    |
| Λ Completed Fuel Break              | — Planned Mixed Construction Line | — Repair Line                  | ■ Fruit Growers Supply Co Inc     | ■ US Forest Service               |                                    |
| H Completed Hand Line               | — Planned Road as Line            | — Road Repair                  | ■ Giustina (Winberry)             | ■ Waning Family LLC               |                                    |
| M Completed Mixed Construction Line | ● Planned Secondary Line          | — UAS Launch and Recovery Zone | ■ Government Unspecified          |                                   |                                    |





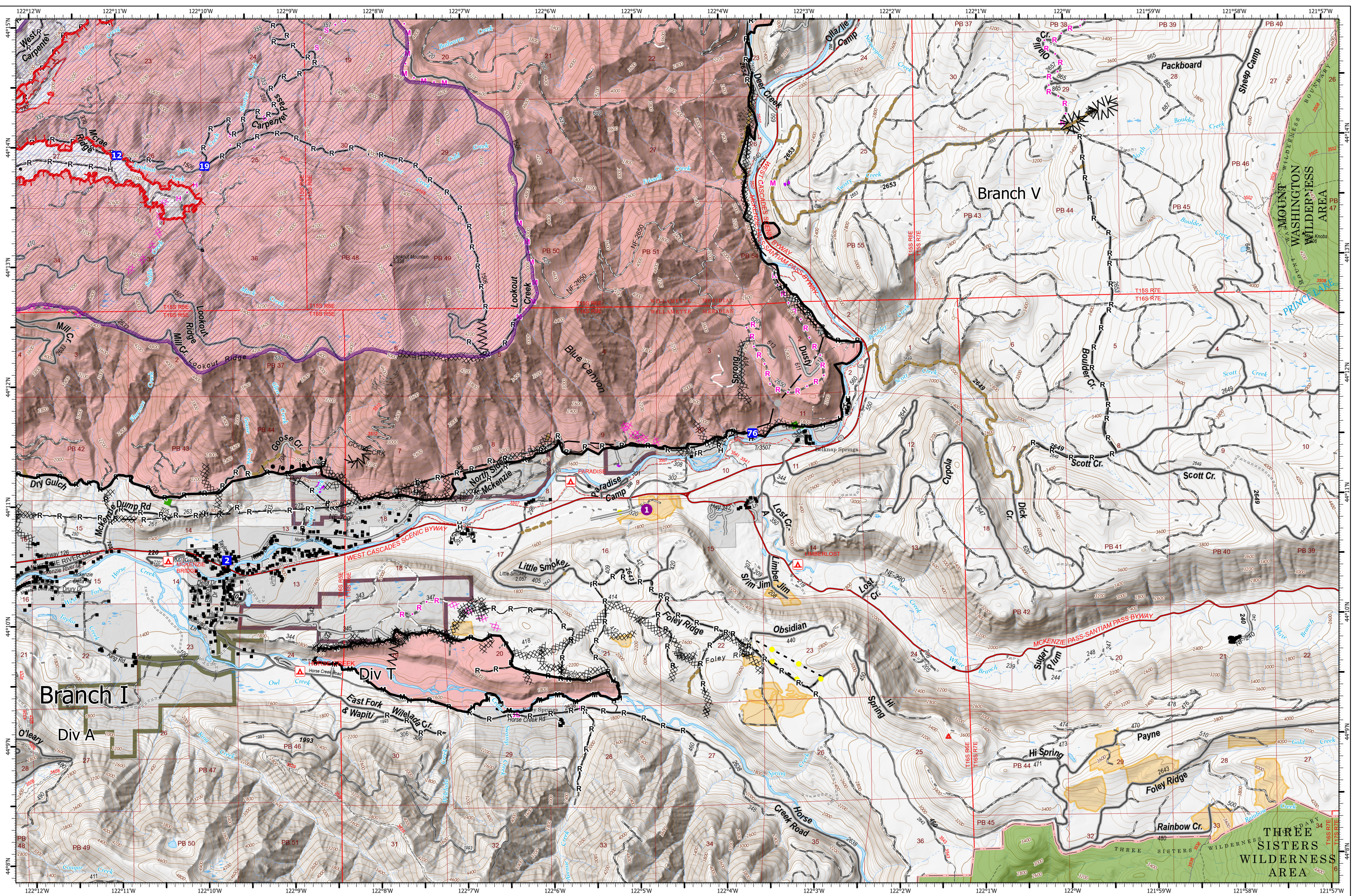
9/18/2023 2116  
North American 1983 Datum, Lat/Long Grid





0 1 2 Miles

Operations  
Div P



Operations  
Div T

# Operations

Lookout  
ORWIF-230327  
09/19/2023

25,515 acres at 9/17/2023 @ 2105  
Acres from IR & GPS

- |                          |                                     |                                   |                                   |                                   |                                    |
|--------------------------|-------------------------------------|-----------------------------------|-----------------------------------|-----------------------------------|------------------------------------|
| ● Hellsport              | — Completed Mixed Construction Line | — Access or Improved Road         | — UAS Launch and Recovery Zone    | — Giustina (Winberry)             | — Waning Family LLC                |
| ■ Drop Point             | — Completed Road as Line            | — Planned Dozer Line              | — Fire Area                       | — Government Unspecified          | — Weyerhaeuser Timber Holdings Inc |
| — Completed Burnout      | — Planned Hand Line                 | — Planned Mixed Construction Line | — Previous RX Burn                | — Oregon Dept of State Lands      | — De-Energized Transmission Line   |
| ××× Completed Dozer Line | — Planned Mixed Construction Line   | — Planned Road as Line            | — Cadore Timber Co                | — Pangaea Pacific Timberlands LLC |                                    |
| ∧∧ Completed Fuel Break  | — Road Repair                       |                                   | — Franklin-Clarkson Timber Co LLC | — US Bureau of Land Management    |                                    |
| H Completed Hand Line    | — Escape Route                      |                                   | — Fruit Growers Supply Co Inc     | — US Forest Service               |                                    |



9/18/2023 2118  
North American 1983 Datum, Lat/Long Grid

Operations  
Div T