

Repair

Lookout

ORWIF-230327

09/19/2023

Acres from IR & GPS

25,515 acres at 9/17/2023 @ 2105

<ul style="list-style-type: none"> ○ In Use - Fire Management ○ In Use - Fire Management ○ Needs Assessment ○ Repair Needed ○ In Progress ○ Completed - Ready for Inspection ○ Completed - Inspected ○ No Repair Needed 	<ul style="list-style-type: none"> ○ In Use - Fire Management ○ Repair Needed ○ Airstrip or Airport ○ Dip Site ○ Helispot ○ Division Break ○ Branch Break ○ Drop Point ○ Closure 	<ul style="list-style-type: none"> S Staging Area ⚠ Lookout ⚠ Hot Spot - Spot Fire ⚠ Fire Origin ⚠ Value at Risk ⚠ Other ⚠ Gate ⚠ Bridge ⚠ Water Development or Draft Site 	<ul style="list-style-type: none"> ⚠ Stream Crossing ⚠ Road Repair ⚠ Resource Location ⚠ Repair Point ⚠ Landing or Log Deck ⚠ Hazard Tree ⚠ Dozer Push ⚠ Culvert ⚠ Clean Up Area ⚠ Mobile Weather Unit 	<ul style="list-style-type: none"> ⚠ Internet Access ⚠ Repeater ⚠ Safety Zone ⚠ Hazard ⚠ Water Source ⚠ Other Property ⚠ Pump ⚠ Water Tank ⚠ Completed Burnout 	<ul style="list-style-type: none"> ⚠ Completed Dozer Line ⚠ Completed Fuel Break ⚠ Completed Hand Line ⚠ Completed Mixed Construction Line ⚠ Completed Road as Line ⚠ Planned Dozer Line ⚠ Access or Improved Road ⚠ Other 	<ul style="list-style-type: none"> ⚠ Repair Line ⚠ Road Repair ⚠ Retardant Drop ⚠ UAS Launch and Recovery Zone ⚠ Contained ⚠ Uncontained Fire Edge ⚠ Wildfire Daily Fire Perimeter ⚠ Franklin-Clarkson Timber Co LLC 	<ul style="list-style-type: none"> ⚠ Giustina (Winberry) ⚠ Oregon Dept of State Lands
--	---	---	---	---	--	--	---

9/18/2023 2120

North American 1983 Datum. LatLong Grid

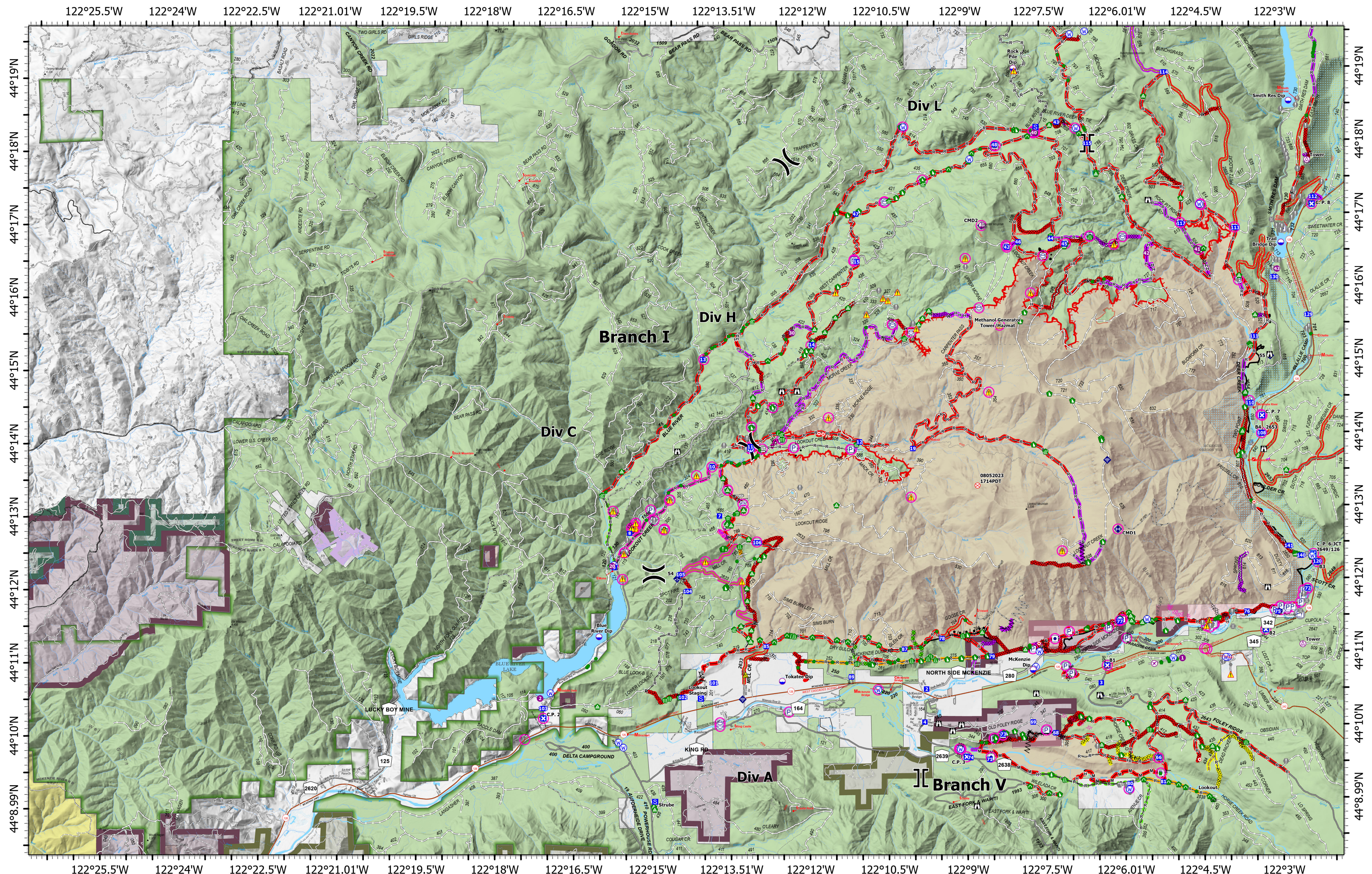
0 0.25 0.5 1 1.5 Miles

Repair

Div A

Repair

Div A



Repair
Div C/Div H

Repair

Lookout

ORWIF-230327

09/19/2023

Acres from IR & GPS

25,515 acres at 9/17/2023 @ 2105

<ul style="list-style-type: none"> ○ In Use - Fire Management ○ In Use - Fire Management ○ Needs Assessment ○ Repair Needed ○ In Progress ○ Completed - Ready for Inspection ○ Completed - Inspected 	<ul style="list-style-type: none"> ○ No Repair Needed ○ In Use - Fire Management ○ Repair Needed ○ Other - See Comments ○ Aerial Hazard ○ Hot Spot - Spot Fire ○ Dip Site ○ Helispot ○ Sling Site 	<ul style="list-style-type: none"> () Division Break () Branch Break [] Drop Point [] Closure [] Staging Area [] Lookout [] Hot Spot - Spot Fire [] Fire Origin [] Value at Risk 	<ul style="list-style-type: none"> ● Other ● Gate ● Bridge ● Water Development or Draft Site ● Structure Wrap ● Stream Crossing ● Road Repair ● Resource Location ● Repair Point 	<ul style="list-style-type: none"> ▲ Landing or Log Deck ▲ Hazard Tree ▲ Dozer Push ▲ Culvert ▲ Clean Up Area ▲ Mobile Weather Unit ▲ Internet Access ▲ Repeater ▲ Safety Zone 	<ul style="list-style-type: none"> ▲ Hazard ▲ Water Source ▲ Other Property ▲ Pump ▲ Water Tank ▲ Completed Burnout ▲ Completed Dozer Line ▲ Completed Fuel Break ▲ Completed Hand Line 	<ul style="list-style-type: none"> — Completed Mixed Construction Line — Completed Road as Line — Planned Dozer Line — Access or Improved Road — Other — Repair Line — Road Repair — Retardant Drop 	<ul style="list-style-type: none"> — UAS Launch and Recovery Zone — Contained — Uncontained Fire Edge — Wildfire Daily Fire Perimeter — Cadore Timber Co — Franklin-Clarkson Timber Co LLC — Giustina (Winberry) 	<ul style="list-style-type: none"> — Oregon Dept of State Lands — Weyerhaeuser Timber Holdings Inc
--	--	---	---	--	--	---	--	---

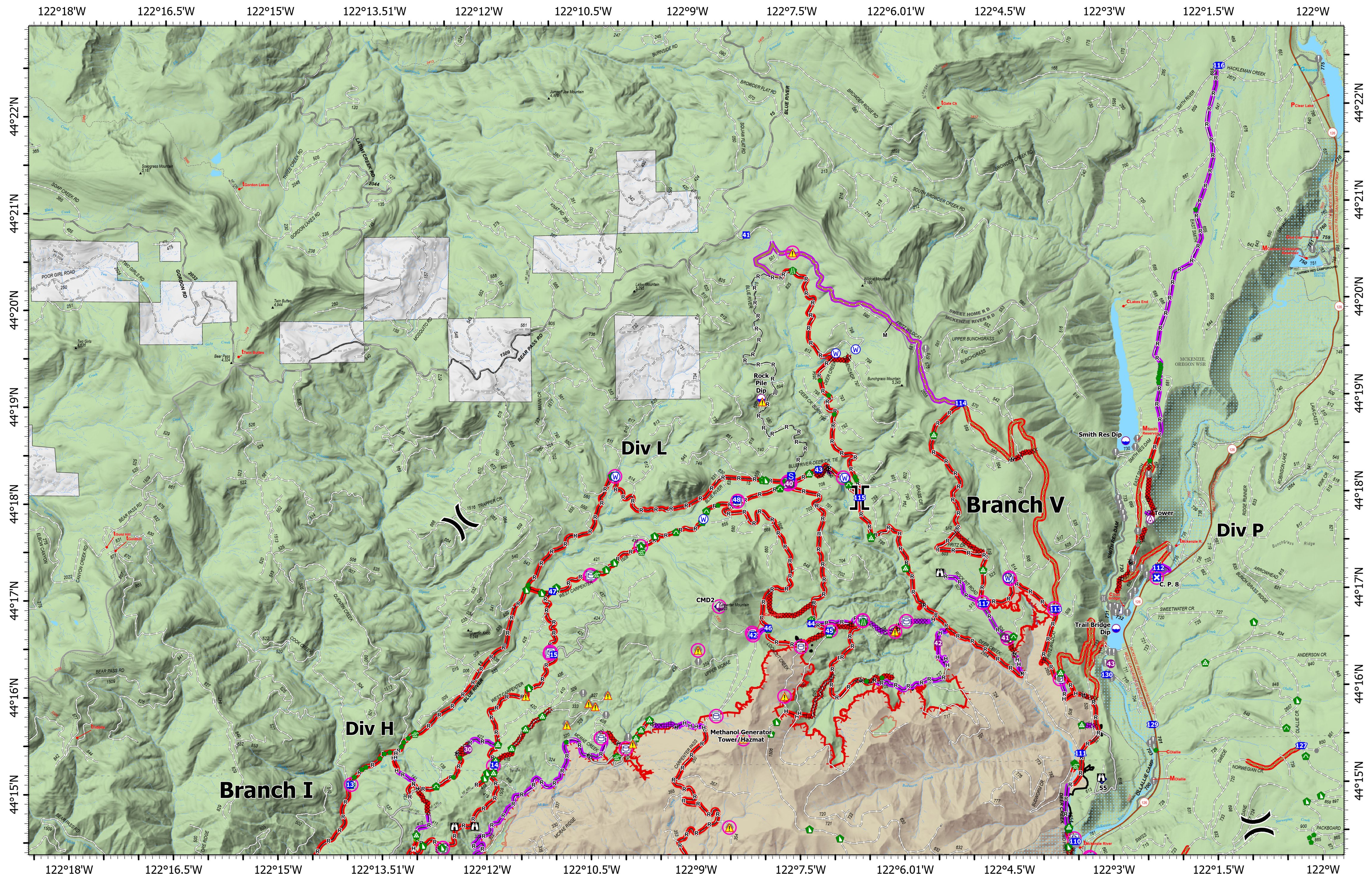
Repair
Div C/Div H

9/18/2023 2122

North American 1983 Datum. LatLong Grid

0 0.250.5 1 1.5 2 Miles

Repair
Div C/Div H



**Repair
Div L**

Repair
 Lookout
 ORWIF-230327
 09/19/2023
 Acres from IR & GPS
 25,515 acres at 9/17/2023 @ 2105

- In Use - Fire Management
- ▬ In Use - Fire Management
- ▬ Needs Assessment
- ▬ Repair Needed
- ▬ Completed - Inspected
- ▬ No Repair Needed
- Other - See Comments
- ⚠ Aerial Hazard
- ⚠ Dip Site
- ⚠ Helispot
- ⚠ Sling Site
-) Division Break

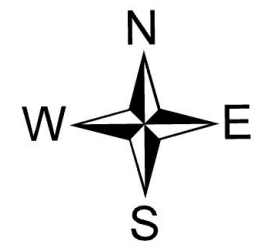
- | Branch Break
- ⊠ Drop Point
- ⊠ Closure
- ⊠ Staging Area
- ⊠ Lookout
- ⊠ Value at Risk
- ⊠ Other
- ⊠ Bridge

- ⊠ Water Development or Draft Site
- ⊠ Road Repair
- ⊠ Repair Point
- ⊠ Landing or Log Deck
- ⊠ Dozer Push
- ⊠ Sling Site
- ⊠ Mobile Weather Unit

- ⊠ Repeater
- ⊠ Hazard
- ⊠ Water Source
- ⊠ Other Property
- ⊠ Pump
- ⊠ Water Tank
- ⊠ Completed Dozer Line
- ⊠ Completed Fuel Break

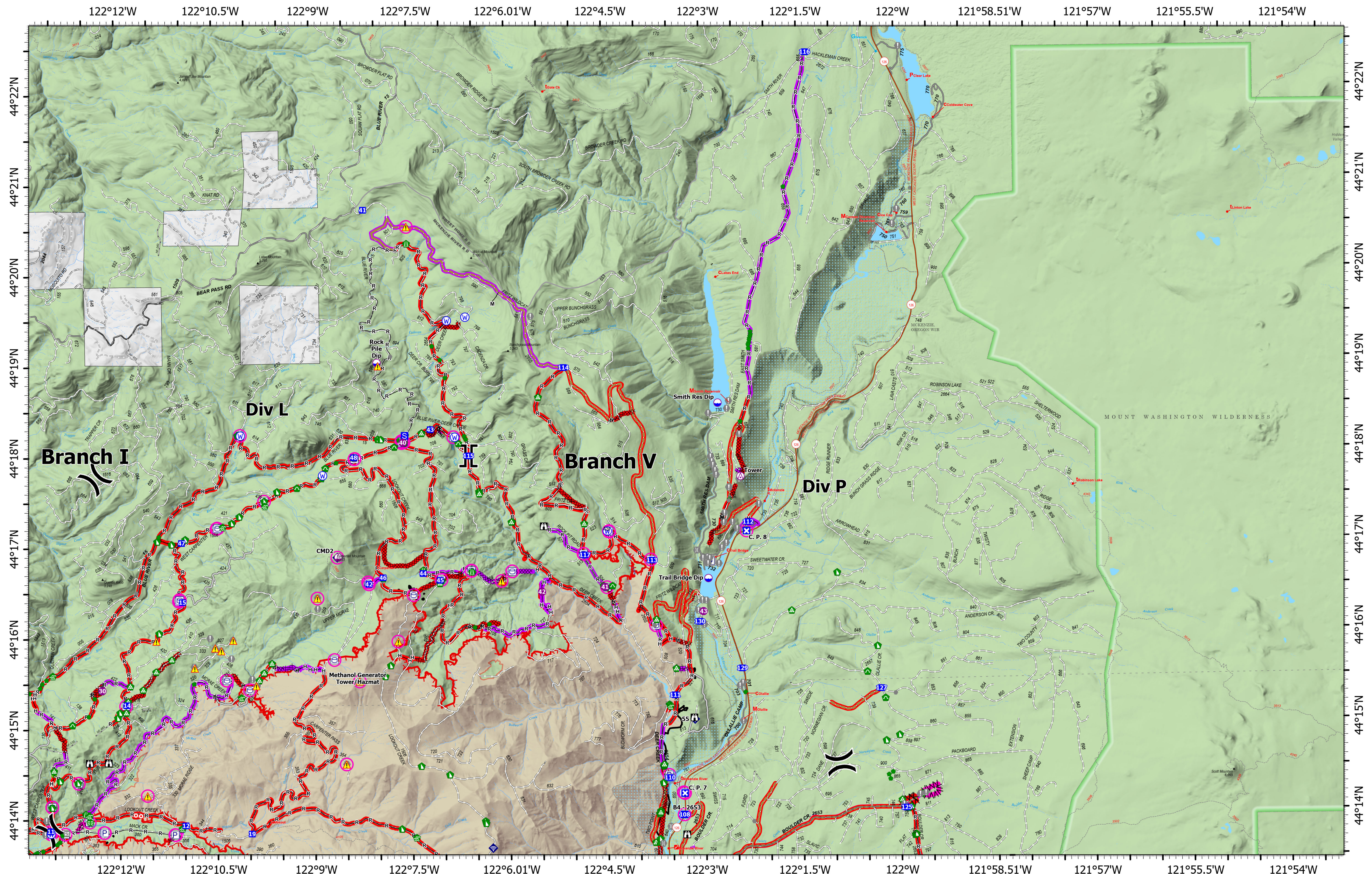
- Completed Hand Line
- Completed Mixed Construction Line
- Completed Road as Line
- Access or Improved Road
- Other
- Culvert
- Repair Line
- Road Repair


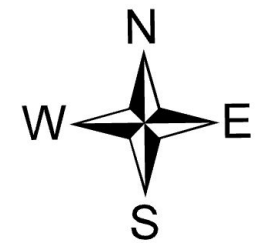

- Contained
- Uncontained Fire Edge
- Wildfire Daily Fire Perimeter

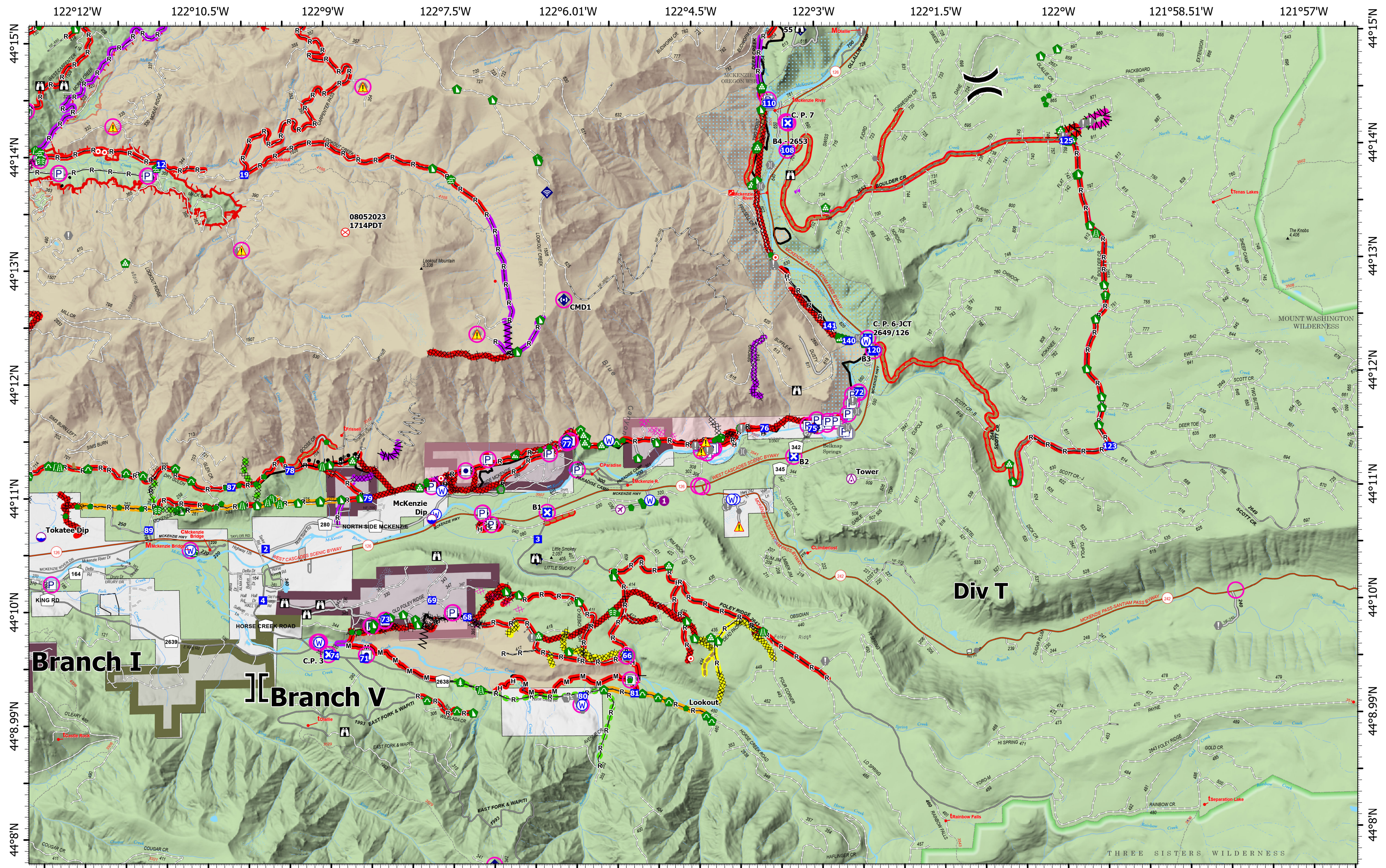


9/18/2023 2124
 North American 1983 Datum. LatLong Grid
 0 0.25 0.5 1 1.5
 Miles

**Repair
Div L**



Repair Div P	<h1>Repair</h1> <h2>Lookout</h2> <h3>ORWIF-230327</h3> <h4>09/19/2023</h4> <p><i>Acres from IR & GPS</i> 25,515 acres at 9/17/2023 @ 2105</p>	<ul style="list-style-type: none"> ○ In Use - Fire Management ▬ In Use - Fire Management ▬ Needs Assessment ▬ Repair Needed ▬ Completed - Inspected ▬ No Repair Needed ○ In Use - Fire Management 	<ul style="list-style-type: none"> ● Other - See Comments ○ Dip Site ● Helispot ○ Sling Site) Division Break ▬ Branch Break ▬ Drop Point ▬ Closure 	<ul style="list-style-type: none"> S Staging Area ⦿ Lookout ⦿ Hot Spot - Spot Fire ⦿ Value at Risk ⦿ Other ⦿ Gate ⦿ Bridge ⦿ Water Development or Draft Site 	<ul style="list-style-type: none"> ⦿ Stream Crossing ⦿ Road Repair ⦿ Repair Point ⦿ Landing or Log Deck ⦿ Fence - Cut/Damaged ⦿ Dozer Push ⦿ Culvert ⦿ Mobile Weather Unit ⦿ Internet Access 	<ul style="list-style-type: none"> ⦿ Repeater ⦿ Hazard ⦿ Water Source ⦿ Other Property ⦿ Pump ⦿ Water Tank ⦿ Completed Dozer Line ⦿ Completed Fuel Break ⦿ Completed Hand Line 	<ul style="list-style-type: none"> ▬ Completed Mixed Construction Line ▬ Completed Road as Line ▬ Access or Improved Road ▬ Other ▬ Repair Line ▬ Road Repair ▬ UAS Launch and Recovery Zone 	<ul style="list-style-type: none"> ▬ Contained ▬ Uncontained Fire Edge ▬ Wildfire Daily Fire Perimeter 				Repair Div P
	<p>9/18/2023 2126 North American 1983 Datum. LatLong Grid 0 0.25 0.5 1 1.5 Miles</p>											



Repair

Div T

Repair

Lookout

ORWIF-230327

09/19/2023

Acres from IR & GPS

25,515 acres at 9/17/2023 @ 2105

9/18/2023 2127

North American 1983 Datum. LatLong Grid

0 0.25 0.5 1 1.5 Miles

In Use - Fire Management	Repair Needed	Drop Point	Water Development or Draft Site	Dozer Push	Pump	Uncontained Fire Edge
In Use - Fire Management	Repair Needed	Closure	Structure Wrap	Culvert	Water Tank	Wildfire Daily Fire Perimeter
Needs Assessment	Other - See Comments	Lookout	Stream Crossing	Clean Up Area	Completed Burnout	Franklin-Clarkson Timber Co LLC
Repair Needed	Aerial Hazard	Hot Spot - Spot Fire	Road Repair	Mobile Weather Unit	Completed Dozer Line	Giustina (Winberry)
In Progress	Airstrip or Airport	Fire Origin	Resource Location	Internet Access	Repair Line	
Completed - Ready for Inspection	Dip Site	Value at Risk	Repair Point	Repeater	Road Repair	
Completed - Inspected	Helispot	Other	Landing or Log Deck	Hazard	Completed Fuel Break	
No Repair Needed	Division Break	Gate	Hazard Tree	UAS Launch and Recovery Zone	Completed Mixed Construction Line	
	Branch Break	Bridge	Fence - Cut/Damaged	Other Property	Completed Road as Line	