

Operations
Div A

Operations

Lookout

ORWIF-230327

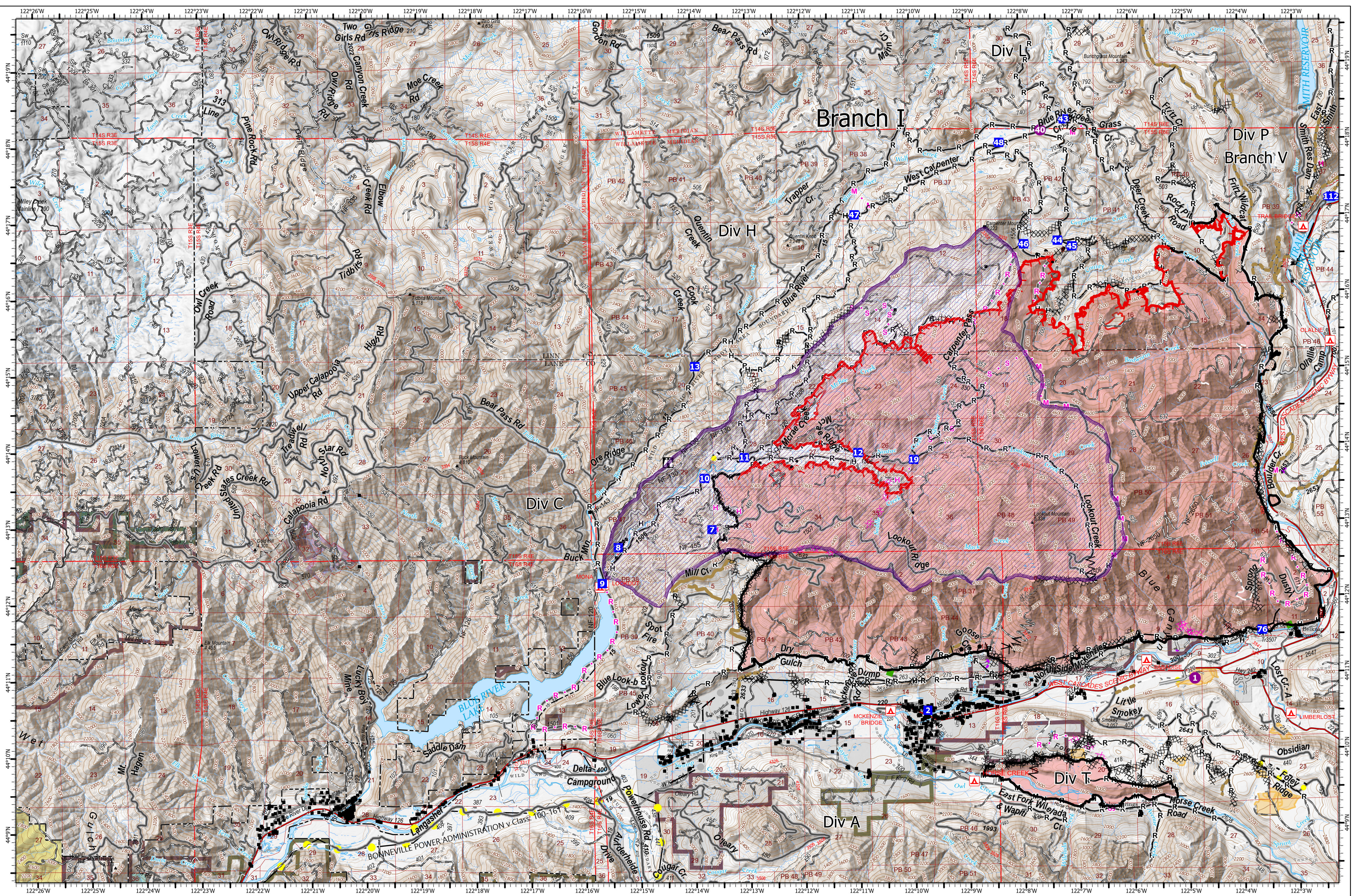
09/20/2023

25,515 acres at 9/17/2023 @ 2105
Acres from IR & GPS

- | | | | | | | |
|--|--|--|--|---|---|--|
| <ul style="list-style-type: none"> ● Helispot ■ Drop Point Completed Burnout Completed Dozer Line Completed Fuel Break Completed Hand Line | <ul style="list-style-type: none"> Completed Mixed Construction Line Completed Road as Line Planned Dozer Line Planned Hand Line Planned Mixed Construction Line Planned Road as Line | <ul style="list-style-type: none"> Access or Improved Road Highlighted Feature Other Repair Line Road Repair Escape Route | <ul style="list-style-type: none"> Completed Mixed Construction Line Completed Road as Line Planned Dozer Line Planned Hand Line Planned Mixed Construction Line Planned Road as Line | <ul style="list-style-type: none"> UAS Launch and Recovery Zone Fire Area Previous RX Burn Cadore Timber Co Franklin-Clarkson Timber Co LLC Fruit Growers Supply Co Inc | <ul style="list-style-type: none"> Giustina (Winberry) Government Unspecified Oregon Dept of State Lands Pangaea Pacific Timberlands LLC US Bureau of Land Management US Forest Service | <ul style="list-style-type: none"> Waning Family LLC Weyerhaeuser Timber Holdings Inc De-Energized Transmission Line Energized Transmission Line |
|--|--|--|--|---|---|--|



Operations
Div A




Operations
Div C/Div H

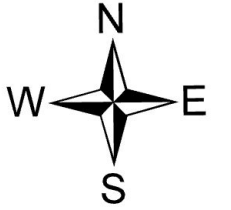
Operations

Lookout


ORWIF-230327
09/20/2023
25,515 acres at 9/17/2023 @ 2105
Acres from IR & GPS

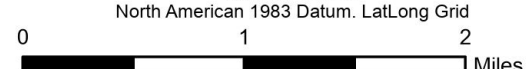
- | | | | | | |
|------------------------|-------------------------------------|---------------------------|-----------------------------------|-----------------------------------|------------------------------------|
| ● Helispot | — Completed Mixed Construction Line | — Access or Improved Road | — UAS Launch and Recovery Zone | — Giustina (Winberry) | — Waning Family LLC |
| ■ Drop Point | — Completed Road as Line | — Highlighted Feature | — Fire Area | — Government Unspecified | — Weyerhaeuser Timber Holdings Inc |
| ⊠ Lookout | ✕ Planned Dozer Line | — Other | — Previous RX Burn | — Oregon Dept of State Lands | — De-Energized Transmission Line |
| ⊠ Completed Burnout | — Planned Hand Line | — Repair Line | — Cadore Timber Co | — Pangaea Pacific Timberlands LLC | — Energized Transmission Line |
| ⊠ Completed Dozer Line | — Planned Mixed Construction Line | — Road Repair | — Franklin-Clarkson Timber Co LLC | — US Bureau of Land Management | |
| ⊠ Completed Fuel Break | — Planned Road as Line | — Escape Route | — Fruit Growers Supply Co Inc | — US Forest Service | |
| — Completed Hand Line | | | | | |



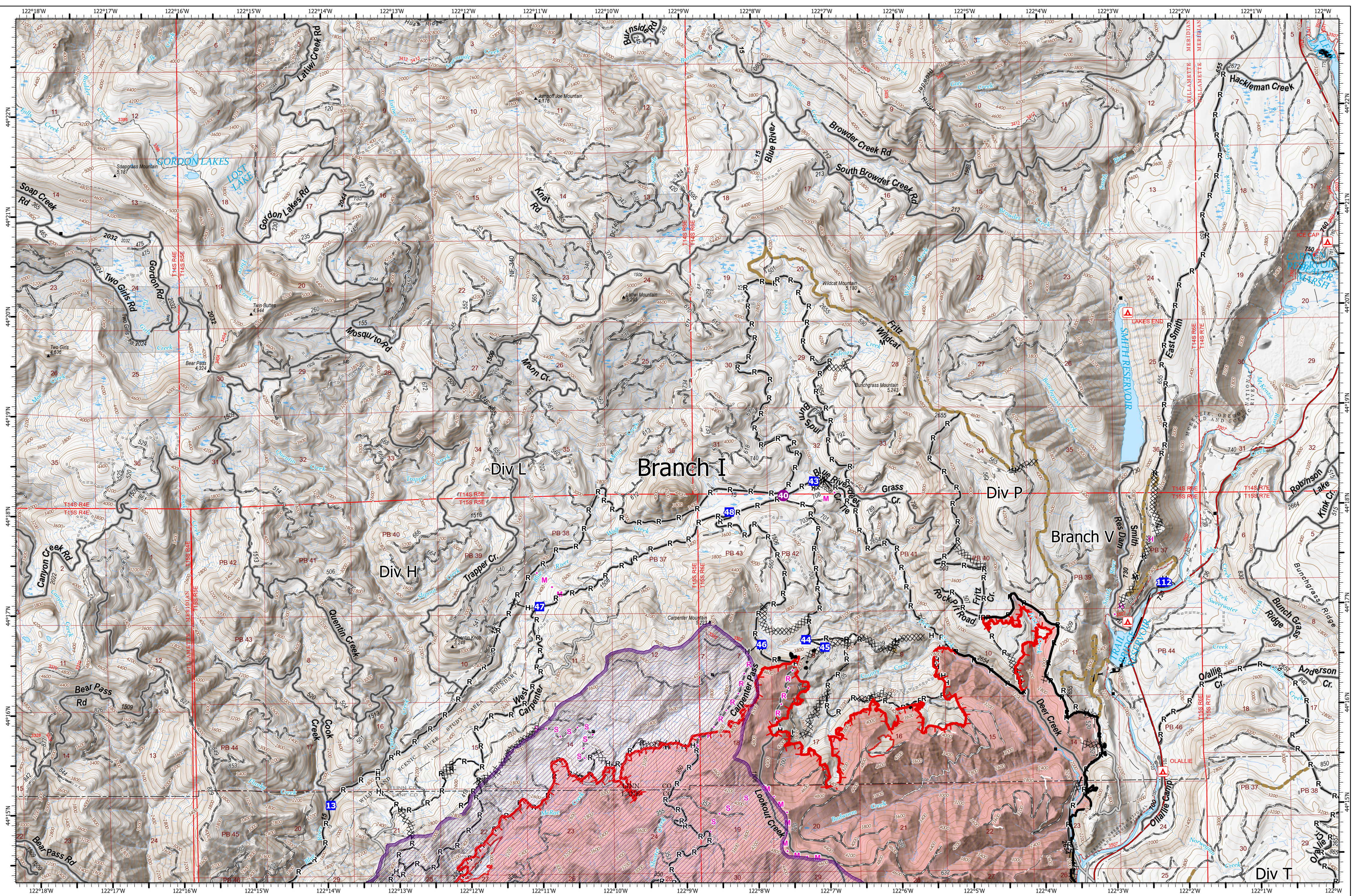


9/19/2023 2030
North American 1983 Datum. Lat/Long Grid





Operations
Div C/Div H



Operations
Div L

Operations

Lookout

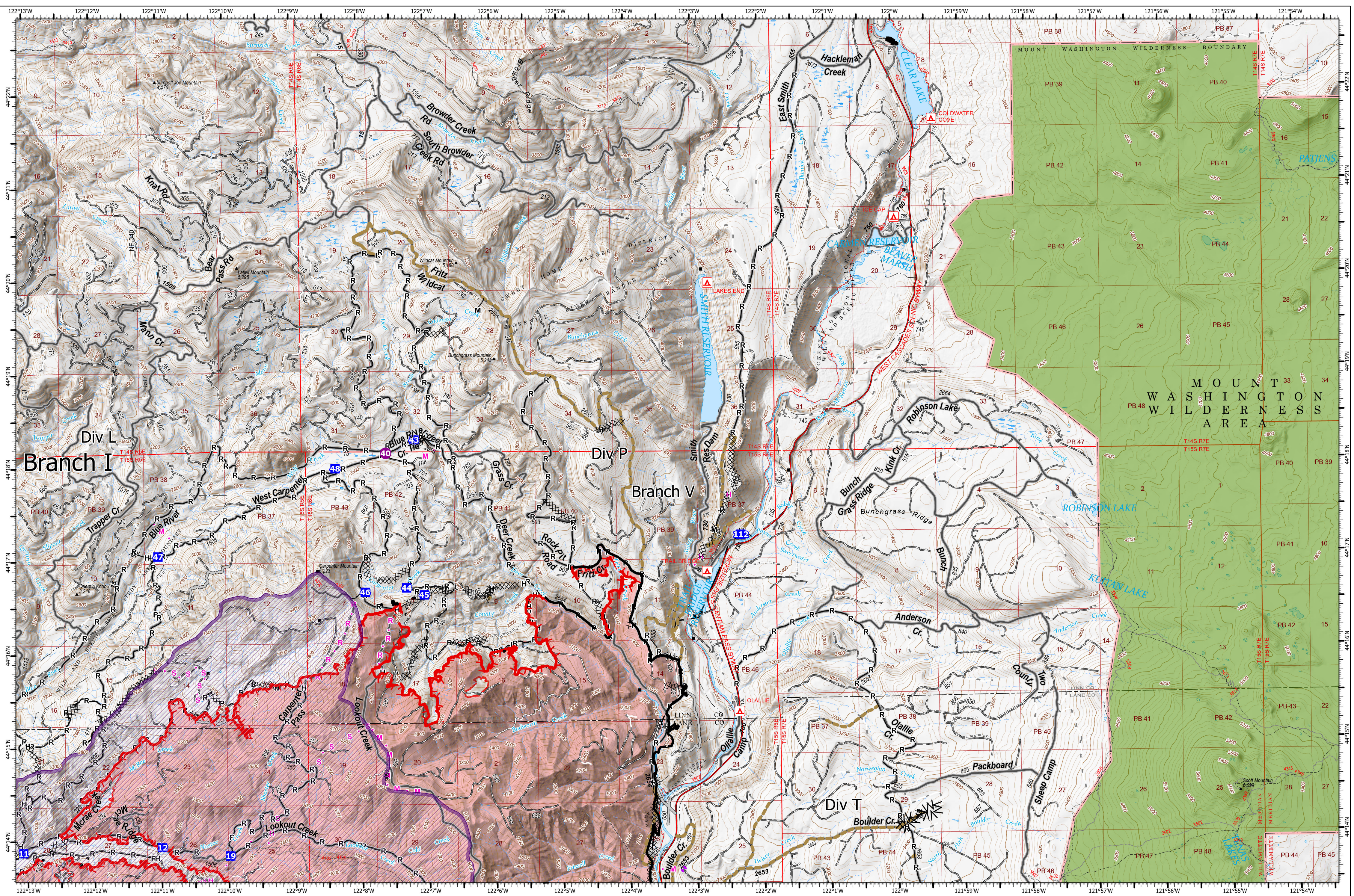
ORWIF-230327
09/20/2023
25,515 acres at 9/17/2023 @ 2105
Acres from IR & GPS

- | | | | | |
|-------------------------------------|-----------------------------------|-----------------------------------|-----------------------------------|------------------------------------|
| ● Hellspot | — Completed Road as Line | — Other | ■ Fruit Growers Supply Co Inc | ■ US Bureau of Land Management |
| ■ Drop Point | — Planned Hand Line | — Repair Line | ■ Giustina (Winberry) | ■ US Forest Service |
| ⊗ Completed Dozer Line | — Planned Mixed Construction Line | — Road Repair | ■ Government Unspecified | ■ Waning Family LLC |
| Λ Completed Fuel Break | — Planned Road as Line | — Fire Area | ■ Oregon Dept of State Lands | ■ Weyerhaeuser Timber Holdings Inc |
| — Completed Hand Line | — Planned Secondary Line | — Cadore Timber Co | ■ Pangaea Pacific Timberlands LLC | ■ De-Energized Transmission Line |
| — Completed Mixed Construction Line | — Access or Improved Road | ■ Franklin-Clarkson Timber Co LLC | | |



9/19/2023 2032
North American 1983 Datum, Lat/Long Grid
0 1 2 Miles

Operations
Div L



Operations
Div P

Operations

Lookout

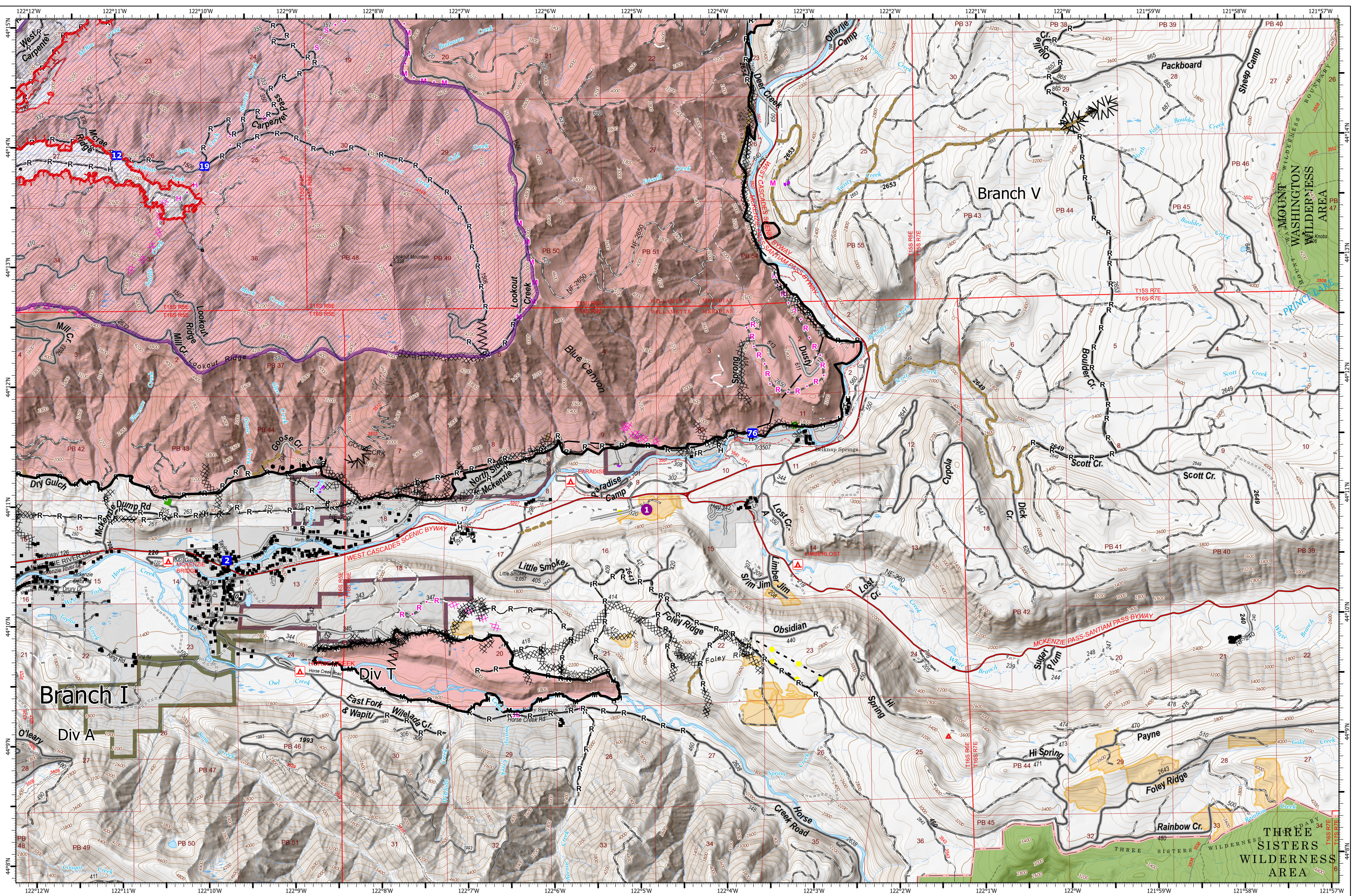
ORWIF-230327
09/20/2023
25,515 acres at 9/17/2023 @ 2105
Acres from IR & GPS

- | | | | | | |
|-------------------------------------|-----------------------------------|--------------------------------|-----------------------------------|-----------------------------------|------------------------------------|
| ● Helispot | — Completed Road as Line | — Access or Improved Road | ■ Fire Area | ■ Oregon Dept of State Lands | ■ Weyerhaeuser Timber Holdings Inc |
| ■ Drop Point | ✖ Planned Dozer Line | ● Highlighted Feature | ■ Cadore Timber Co | ■ Pangaea Pacific Timberlands LLC | ■ De-Energized Transmission Line |
| ✖ Completed Dozer Line | — Planned Hand Line | — Other | ■ Franklin-Clarkson Timber Co LLC | ■ US Bureau of Land Management | |
| Λ Completed Fuel Break | — Planned Mixed Construction Line | — Repair Line | ■ Fruit Growers Supply Co Inc | ■ US Forest Service | |
| H Completed Hand Line | — Planned Road as Line | — Road Repair | ■ Giustina (Winberry) | ■ Waning Family LLC | |
| M Completed Mixed Construction Line | ● Planned Secondary Line | — UAS Launch and Recovery Zone | ■ Government Unspecified | | |

9/19/2023 2035
North American 1983 Datum, Lat/Long Grid

0 1 2 Miles

Operations
Div P



Operations
Div T

Operations

Lookout
ORWIF-230327
09/20/2023
25,515 acres at 9/17/2023 @ 2105
Acres from IR & GPS

- | | | | | | |
|--------------------------|-------------------------------------|-----------------------------------|-----------------------------------|-----------------------------------|------------------------------------|
| ● Hellsport | — Completed Mixed Construction Line | — Access or Improved Road | — UAS Launch and Recovery Zone | — Giustina (Winberry) | — Waning Family LLC |
| ■ Drop Point | — Completed Road as Line | — Planned Dozer Line | — Fire Area | — Government Unspecified | — Weyerhaeuser Timber Holdings Inc |
| — Completed Burnout | — Planned Hand Line | — Planned Mixed Construction Line | — Previous RX Burn | — Oregon Dept of State Lands | — De-Energized Transmission Line |
| ××× Completed Dozer Line | — Planned Mixed Construction Line | — Planned Road as Line | — Cadore Timber Co | — Pangaea Pacific Timberlands LLC | |
| ∧∧ Completed Fuel Break | — Road Repair | | — Franklin-Clarkson Timber Co LLC | — US Bureau of Land Management | |
| H Completed Hand Line | — Escape Route | | — Fruit Growers Supply Co Inc | — US Forest Service | |



9/19/2023 2037
North American 1983 Datum, Lat/Long Grid
0 1 2 Miles

Operations
Div T