
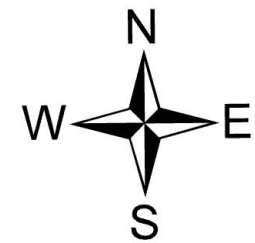

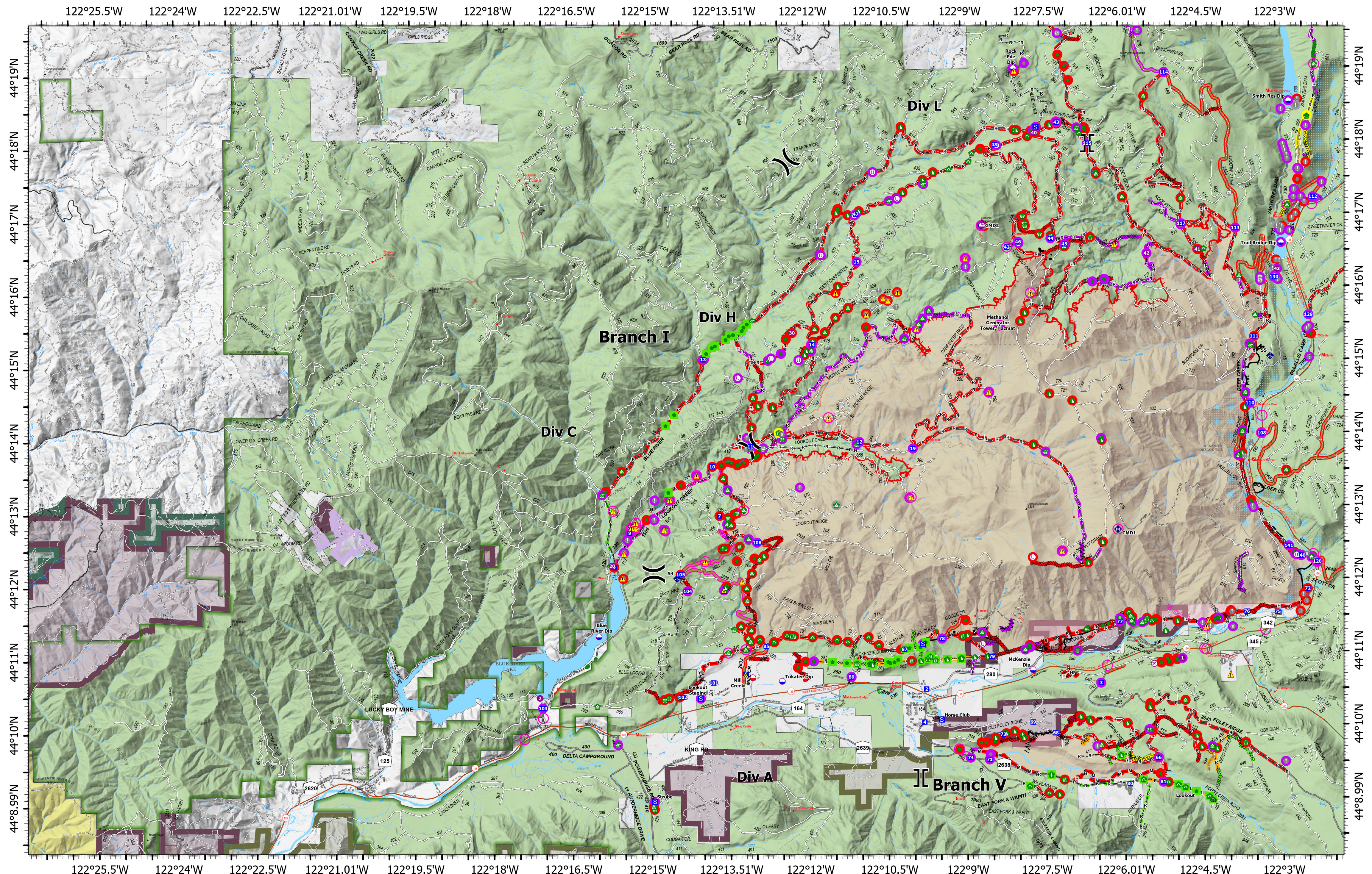


Repair Div A	<h1>Repair</h1> <h2>Lookout</h2> <h3>ORWIF-230327</h3> <p>09/20/2023</p> <p><i>Acres from IR & GPS</i></p> <p>25,515 acres at 9/17/2023 @ 2105</p>		<ul style="list-style-type: none"> ○ In Use - Fire Management ● Needs Assessment ● Repair Needed ● Completed - Inspected ● Other - See Comments ○ In Use - Fire Management ● Needs Assessment ● Repair Needed 	<ul style="list-style-type: none"> ▬ In Progress ▬ Completed - Ready for Inspection ▬ Completed - Inspected ▬ No Repair Needed ⊗ Airstrip or Airport ○ Dip Site ○ Mobile Retardant Base ○ Helispot 	<ul style="list-style-type: none"> ○ Unimproved Landing Area) Division Break Branch Break ⊗ Drop Point A Camp S Staging Area ○ Value at Risk ● Other 	<ul style="list-style-type: none"> ⊗ Gate ⊗ Bridge ⊗ Water Development or Draft Site ⊗ Stream Crossing ⊗ Road Repair ⊗ Resource Location ⊗ Repair Point ⊗ Landing or Log Deck 	<ul style="list-style-type: none"> ⬆ Hazard Tree ⬆ Dozer Push ⬆ Clean Up Area ⬆ Mobile Weather Unit ⬆ Safety Zone ⬆ Hazard ⬆ Completed Burnout 	<ul style="list-style-type: none"> ▬ Completed Dozer Line ▬ Completed Fuel Break ▬ Completed Hand Line ▬ Completed Mixed Construction Line ▬ Completed Road as Line ▬ Planned Dozer Line ▬ Access or Improved Road ▬ Other 	<ul style="list-style-type: none"> ▬ Repair Line ▬ Road Repair ▬ Retardant Drop ▬ UAS Launch and Recovery Zone ▬ Contained ▬ Uncontained Fire Edge ▬ Wildfire Daily Fire Perimeter 	<ul style="list-style-type: none"> ▭ Franklin-Clarkson Timber Co LLC ▭ Giustina (Winberry) ▭ Oregon Dept of State Lands 		<div style="text-align: center;">  <p>9/19/2023 2033</p> <p>North American 1983 Datum. LatLong Grid</p> <p>0 0.25 0.5 1 1.5 Miles</p> </div>		Repair Div A
-------------------------------	---	--	--	---	---	--	---	--	--	---	---	---	---	-------------------------------



Repair
Div C/Div H

Repair

Lookout

ORWIF-230327

09/20/2023

Acres from IR & GPS

25,515 acres at 9/17/2023 @ 2105

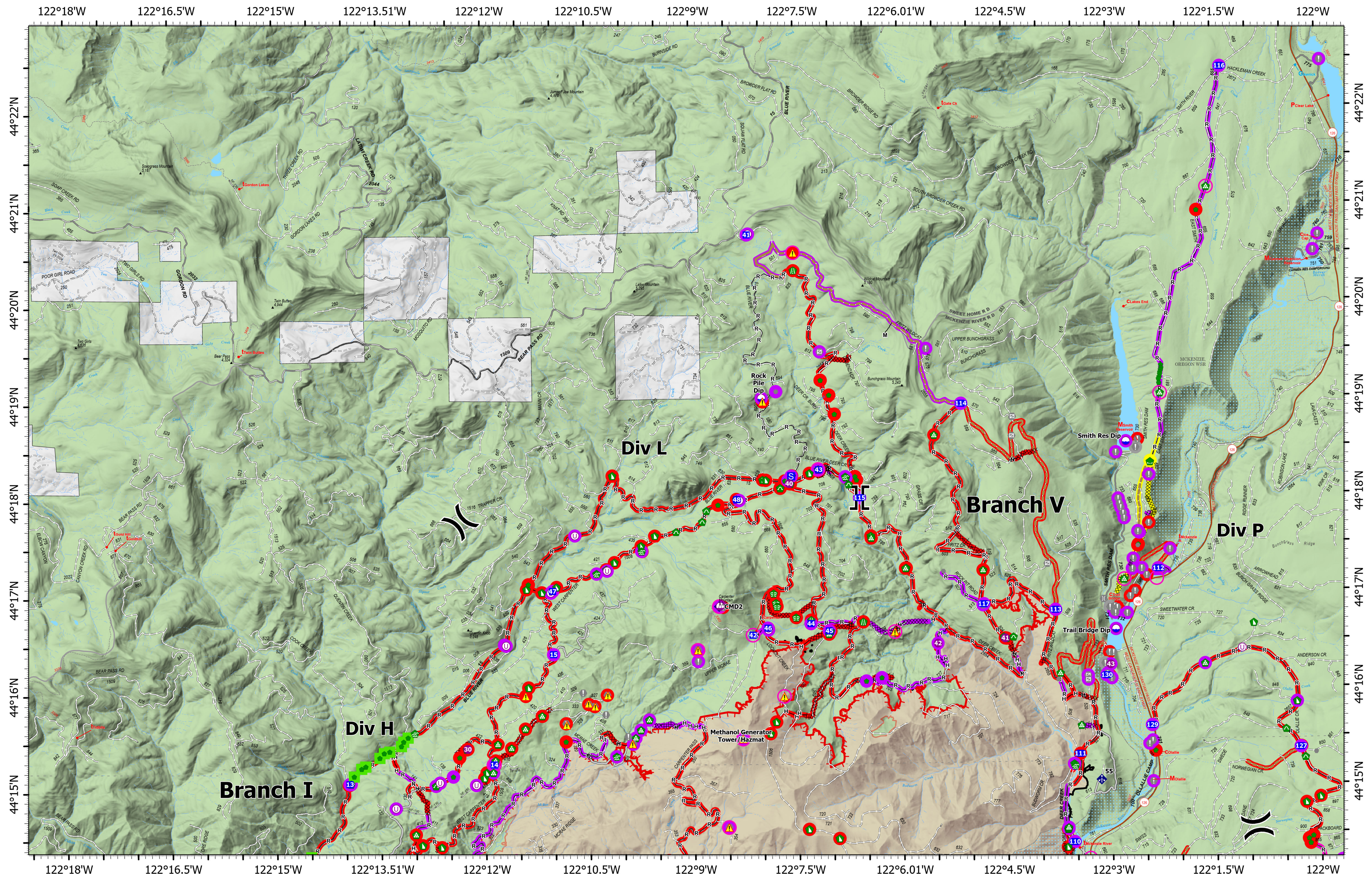
<ul style="list-style-type: none"> ○ In Use - Fire Management ● Needs Assessment ● Repair Needed ● Completed - Ready for Inspection ● Completed - Inspected ● Completed - Inspected ● Other - See Comments — In Use - Fire Management — Needs Assessment 	<ul style="list-style-type: none"> — Repair Needed — In Progress — Completed - Ready for Inspection — Completed - Inspected — No Repair Needed ✈ Airstrip or Airport □ Dip Site □ Staging Area □ Mobile Retardant Base ● Helispot 	<ul style="list-style-type: none"> ○ Sling Site ○ Unimproved Landing Area) Division Break] Branch Break ▲ Drop Point ▲ Camp □ Staging Area ● Value at Risk ● Other 	<ul style="list-style-type: none"> ○ Gate ○ Bridge ○ Water Development or Draft Site ○ Structure Wrap ○ Stream Crossing ○ Road Repair ○ Resource Location ○ Repair Point ○ Landing or Log Deck 	<ul style="list-style-type: none"> ▲ Hazard Tree ▲ Dozer Push ▲ Culvert ▲ Clean Up Area ▲ Mobile Weather Unit ▲ Repeater ▲ Safety Zone ▲ Hazard ▲ Completed Burnout ▲ Completed Dozer Line 	<ul style="list-style-type: none"> — Completed Fuel Break — Completed Hand Line — Completed Mixed Construction Line — Completed Road as Line — Planned Dozer Line — Access or Improved Road — Other — Repair Line 	<ul style="list-style-type: none"> — Road Repair — Retardant Drop — UAS Launch and Recovery Zone — Contained — Uncontained Fire Edge — Wildfire Daily Fire Perimeter — Cadore Timber Co — Franklin-Clarkson Timber Co LLC 	<ul style="list-style-type: none"> — Giustina (Winberry) — Oregon Dept of State Lands — Weyerhaeuser Timber Holdings Inc
---	--	---	---	--	---	---	---

9/19/2023 2035

North American 1983 Datum. LatLong Grid

0 0.250.5 1 1.5 2 Miles

Repair
Div C/Div H



**Repair
Div L**

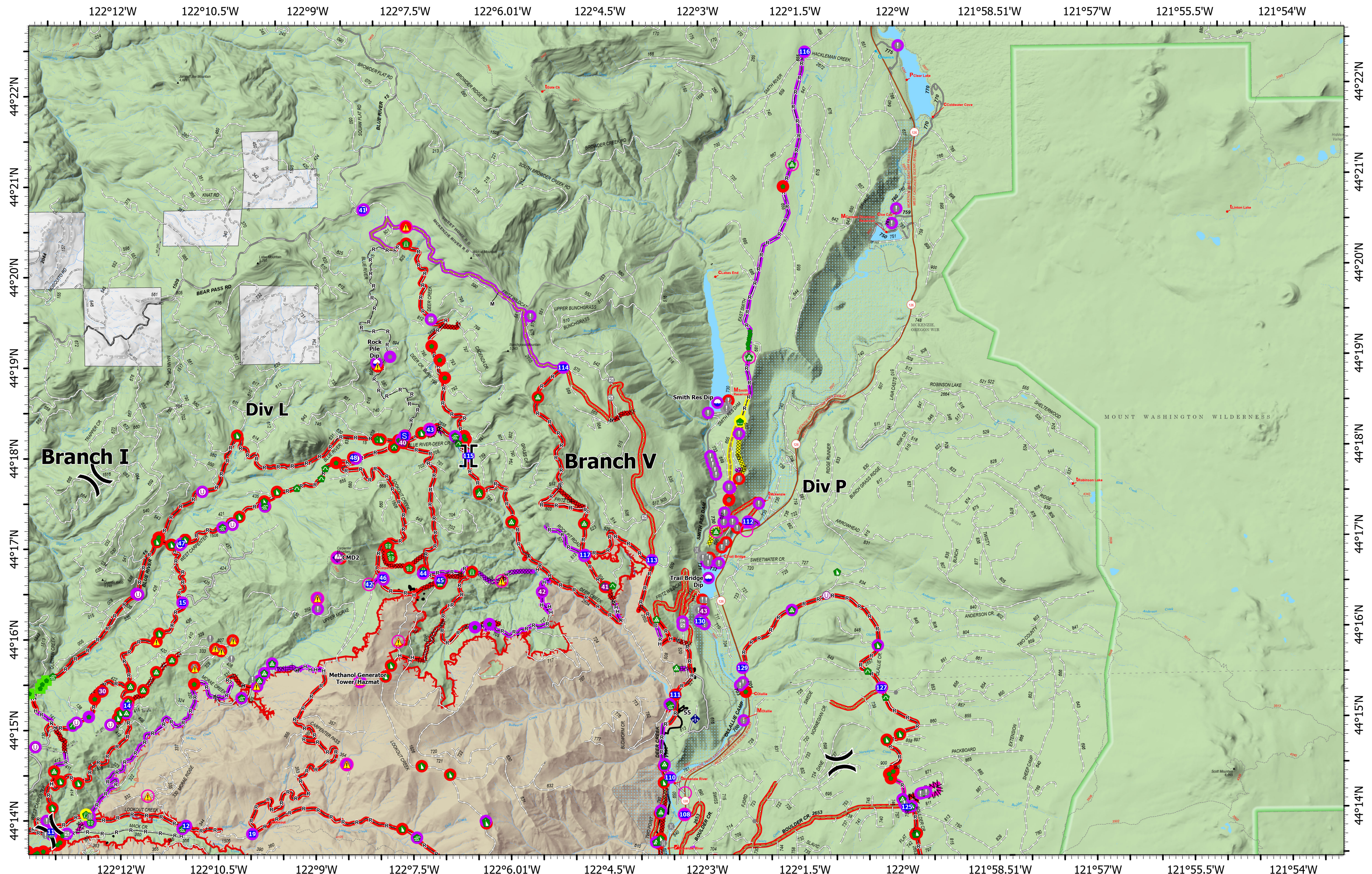
Repair
Lookout
ORWIF-230327
09/20/2023
Acres from IR & GPS
25,515 acres at 9/17/2023 @ 2105

In Use - Fire Management	In Use - Fire Management	Helispot	Value at Risk	Repair Point	Completed Fuel Break	Road Repair
Needs Assessment	Needs Assessment	Sling Site	Other	Landing or Log Deck	Completed Hand Line	Contained
Repair Needed	Repair Needed	Unimproved Landing Area	Gate	Dozer Push	Completed Mixed Construction Line	Uncontained Fire Edge
Completed - Ready for Inspection	Completed - Ready for Inspection	Division Break	Bridge	Culvert	Completed Road as Line	Wildfire Daily Fire Perimeter
Completed - Inspected	Completed - Inspected	Branch Break	Water Development or Draft Site	Mobile Weather Unit	Access or Improved Road	
Other - See Comments	Completed - Inspected No Repair Needed	Staging Area	Stream Crossing	Repeater	Other	
	Dip Site		Road Repair	Hazard	Repair Line	
				Completed Dozer Line		



9/19/2023 2038
 North American 1983 Datum. LatLong Grid
 0 0.25 0.5 1 1.5
 Miles


**Repair
Div L**

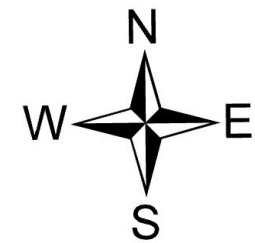


Repair
Div P


Lookout
ORWIF-230327
09/20/2023
Acres from IR & GPS
25,515 acres at 9/17/2023 @ 2105

<ul style="list-style-type: none"> ○ In Use - Fire Management ○ Needs Assessment ● Repair Needed ● Completed - Ready for Inspection ■ Completed - Inspected ● Other - See Comments 	<ul style="list-style-type: none"> ▬ In Use - Fire Management ▬ Needs Assessment ▬ Repair Needed ▬ Completed - Ready for Inspection ▬ Completed - Inspected ▬ No Repair Needed ○ Dip Site 	<ul style="list-style-type: none"> ● Helispot ○ Sling Site ○ Unimproved Landing Area X Division Break Branch Break ■ Drop Point S Staging Area ● Value at Risk 	<ul style="list-style-type: none"> ● Other ○ Gate ○ Bridge ○ Water Development or Draft Site ○ Stream Crossing ○ Road Repair ○ Repair Point ○ Landing or Log Deck 	<ul style="list-style-type: none"> ▬ Fence - Cut/Damaged ▬ Dozer Push ▬ Culvert ▬ Mobile Weather Unit ▬ Repeater ▬ Hazard ▬ Completed Dozer Line ▬ Completed Fuel Break ▬ Completed Hand Line 	<ul style="list-style-type: none"> ▬ Completed Mixed Construction Line ▬ Completed Road as Line ▬ Access or Improved Road ▬ Other ▬ Repair Line ▬ Road Repair 	<ul style="list-style-type: none"> ▬ UAS Launch and Recovery Zone ▬ Contained ▬ Uncontained Fire Edge ▬ Wildfire Daily Fire Perimeter
---	---	--	--	---	---	--






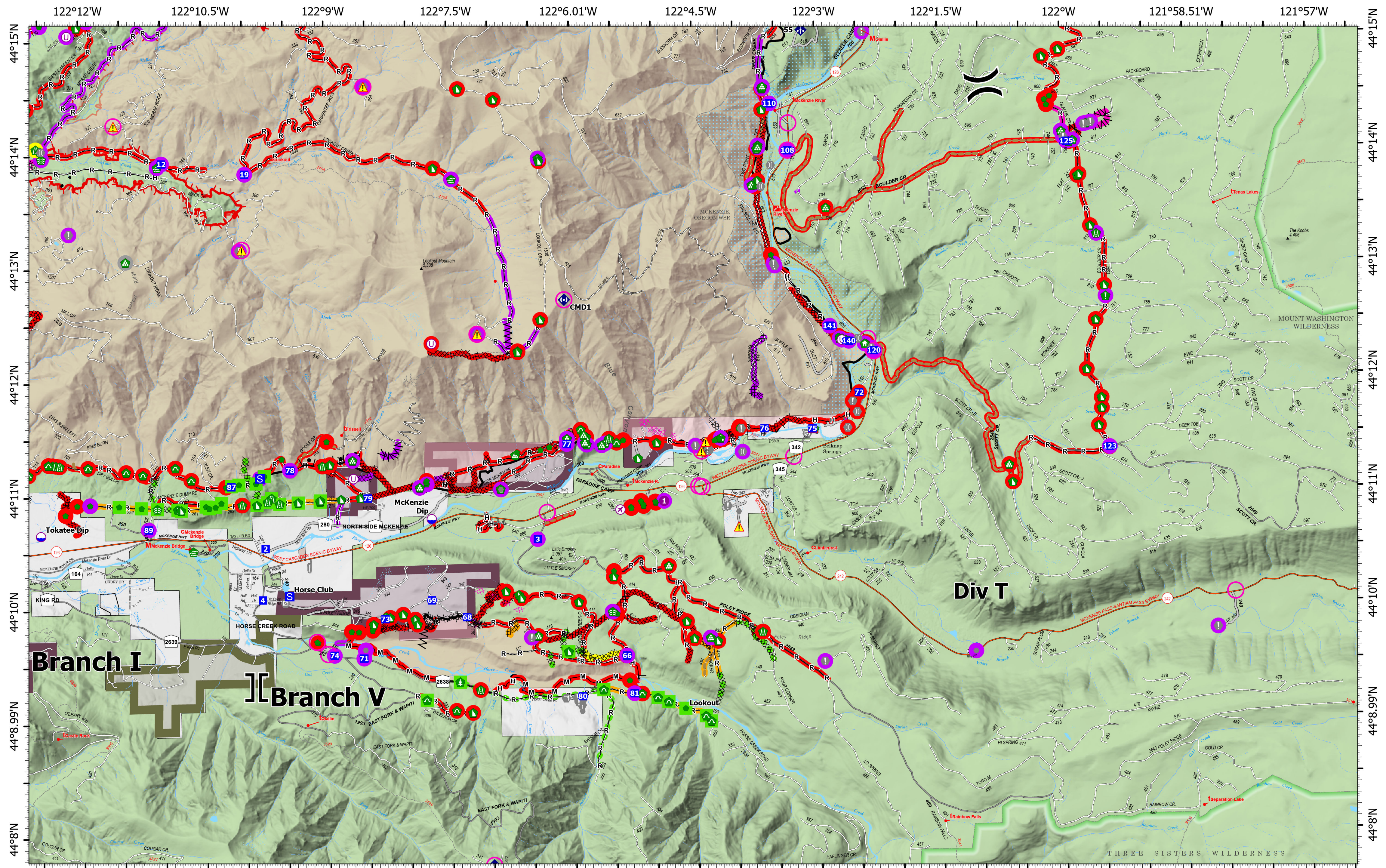
9/19/2023 2040
 North American 1983 Datum. LatLong Grid



0 0.25 0.5 1 1.5 Miles




Repair
Div P

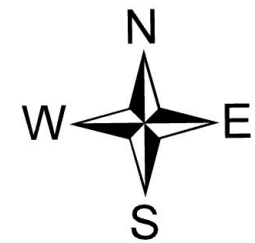


Repair
Div T


Repair
Lookout
ORWIF-230327
09/20/2023
Acres from IR & GPS
25,515 acres at 9/17/2023 @ 2105

- | | | | | | | | |
|--|---|---|---|--|---|--|---|
| <ul style="list-style-type: none"> ○ In Use - Fire Management ● Needs Assessment ● Repair Needed ● Completed - Ready for Inspection ● Completed - Inspected ● Other - See Comments ○ In Use - Fire Management | <ul style="list-style-type: none"> ▬ Needs Assessment ▬ Repair Needed ▬ In Progress ▬ Completed - Ready for Inspection ▬ Completed - Inspected ▬ No Repair Needed ⊗ Airstrip or Airport ○ Dip Site | <ul style="list-style-type: none"> ● Helispot ○ Unimproved Landing Area) Division Break] Branch Break ■ Drop Point S Staging Area ⊕ Value at Risk ● Other | <ul style="list-style-type: none"> ⊕ Gate ⊕ Bridge ⊕ Water Development or Draft Site ⊕ Structure Wrap ⊕ Stream Crossing ⊕ Road Repair ⊕ Resource Location ⊕ Repair Point | <ul style="list-style-type: none"> ⊕ Landing or Log Deck ⊕ Hazard Tree ⊕ Fence - Cut/Damaged ⊕ Dozer Push ⊕ Culvert ⊕ Clean Up Area ⊕ Mobile Weather Unit ⊕ Repeater ⚠ Hazard | <ul style="list-style-type: none"> ▬ Completed Burnout ▬ Completed Fuel Line ▬ Completed Fuel Break ▬ Completed Hand Line ▬ Completed Mixed Construction Line ▬ Completed Road as Line ▬ Planned Dozer Line | <ul style="list-style-type: none"> ▬ Access or Improved Road ▬ Other ▬ Repair Line ▬ Road Repair ▬ Retardant Drop ▬ UAS Launch and Recovery Zone ▬ Contained | <ul style="list-style-type: none"> ▬ Uncontained Fire Edge ▬ Wildfire Daily Fire Perimeter ▬ Franklin-Clarkson Timber Co LLC ▬ Giustina (Winberry) |
|--|---|---|---|--|---|--|---|





9/19/2023 2041
 North American 1983 Datum. LatLong Grid



0 0.25 0.5 1 1.5 Miles

Repair
Div T