

Operations
Div A

Operations

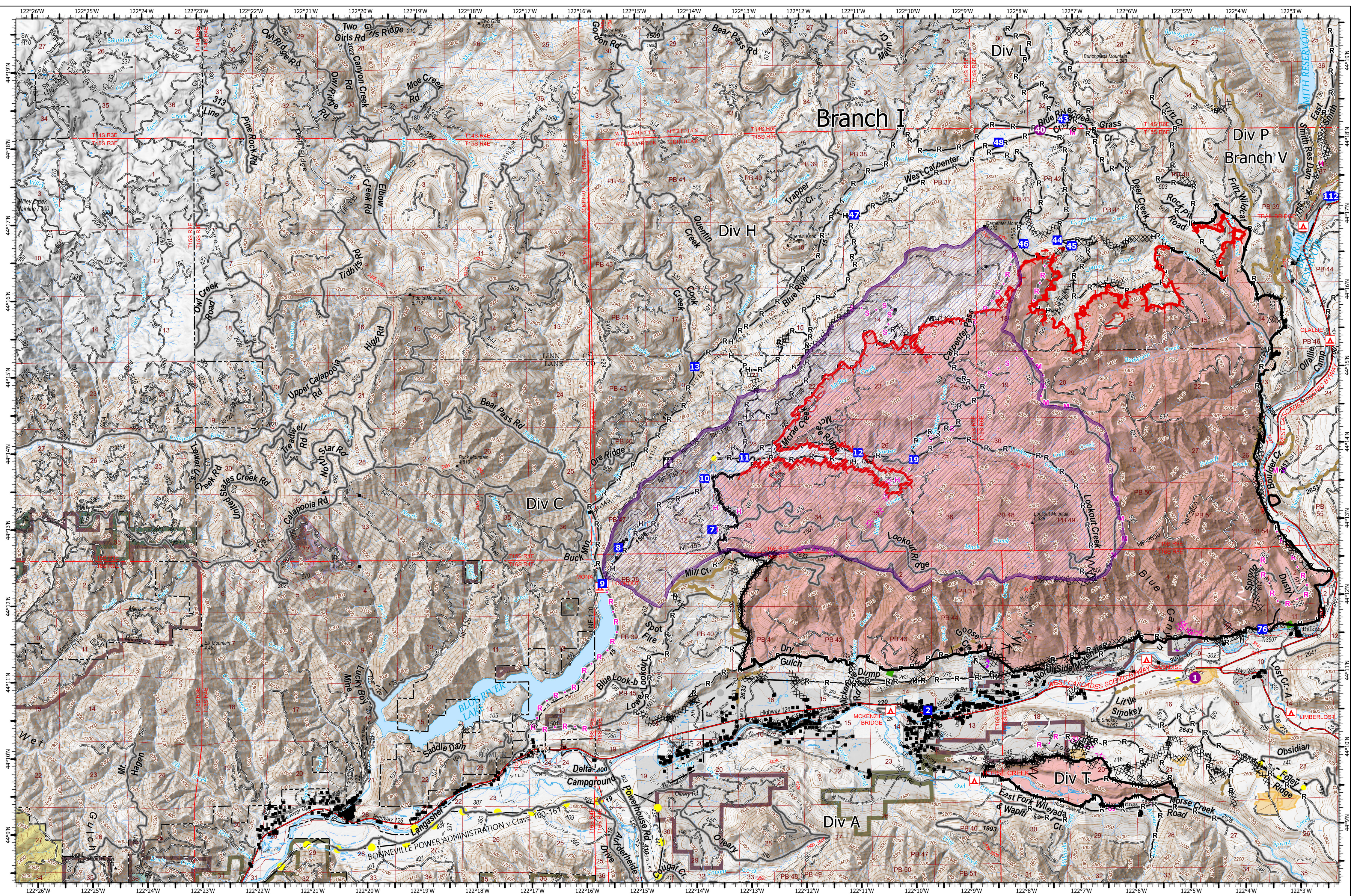
Lookout
ORWIF-230327
09/21/2023
25640 acres at 9/20/2023 @ 0000
Acres from IR & GPS

- | | | | | | |
|---|--|---|---|---|--|
| <ul style="list-style-type: none"> ● Helispot ■ Drop Point — Completed Burnout ××× Completed Dozer Line ∧∧ Completed Fuel Break — Completed Hand Line | <ul style="list-style-type: none"> M — Completed Mixed Construction Line R — Completed Road as Line ×× Planned Dozer Line H — Planned Hand Line M — Planned Mixed Construction Line R — Planned Road as Line | <ul style="list-style-type: none"> — Access or Improved Road ● Highlighted Feature — Other — Repair Line — Road Repair — Escape Route | <ul style="list-style-type: none"> — UAS Launch and Recovery Zone ■ Fire Area ■ Previous RX Burn ■ Cadore Timber Co ■ Franklin-Clarkson Timber Co LLC ■ Fruit Growers Supply Co Inc | <ul style="list-style-type: none"> ■ Giustina (Winberry) ■ Government Unspecified ■ Oregon Dept of State Lands ■ Pangaea Pacific Timberlands LLC ■ US Bureau of Land Management ■ US Forest Service | <ul style="list-style-type: none"> ■ Waning Family LLC ■ Weyerhaeuser Timber Holdings Inc ● De-Energized Transmission Line ● Energized Transmission Line |
|---|--|---|---|---|--|



9/20/2023 2043
North American 1983 Datum, Lat/Long Grid
0 1 2 Miles

Operations
Div A



Operations
Div C/Div H

Operations

Lookout

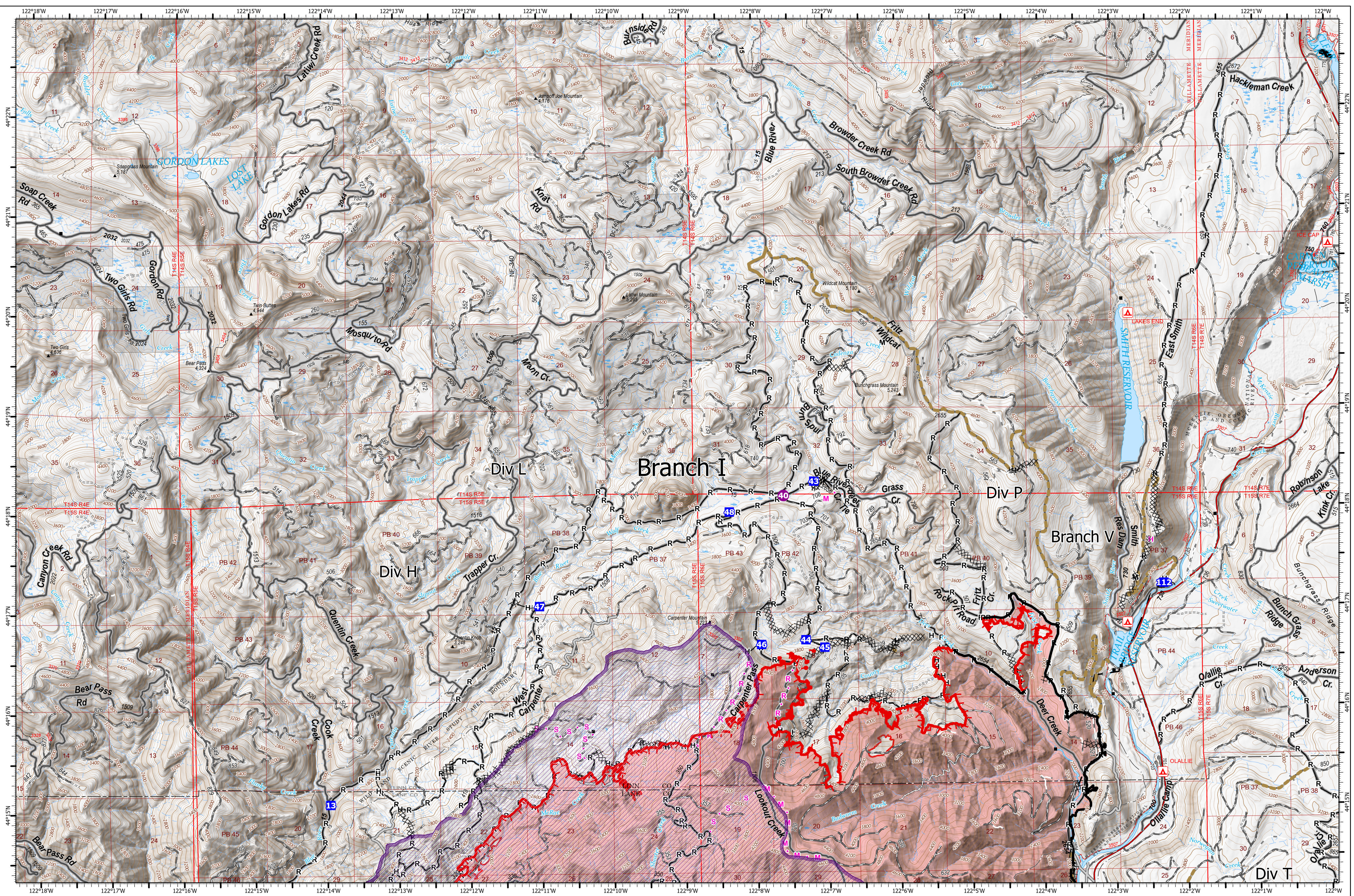
ORWIF-230327
09/21/2023
25640 acres at 9/20/2023 @ 0000
Acres from IR & GPS

- | | | | | | |
|------------------------|-------------------------------------|---------------------------|-----------------------------------|-----------------------------------|------------------------------------|
| ● Helispot | — Completed Mixed Construction Line | — Access or Improved Road | — UAS Launch and Recovery Zone | — Giustina (Winberry) | — Waning Family LLC |
| ■ Drop Point | — Completed Road as Line | — Highlighted Feature | — Fire Area | — Government Unspecified | — Weyerhaeuser Timber Holdings Inc |
| ⊠ Lookout | ✕ Planned Dozer Line | — Other | — Previous RX Burn | — Oregon Dept of State Lands | — De-Energized Transmission Line |
| ⊠ Completed Burnout | — Planned Hand Line | — Repair Line | — Cadore Timber Co | — Pangaea Pacific Timberlands LLC | — Energized Transmission Line |
| ⊠ Completed Dozer Line | — Planned Mixed Construction Line | — Road Repair | — Franklin-Clarkson Timber Co LLC | — US Bureau of Land Management | |
| ⊠ Completed Fuel Break | — Planned Road as Line | — Escape Route | — Fruit Growers Supply Co Inc | — US Forest Service | |
| — Completed Hand Line | | | | | |

9/20/2023 2033
North American 1983 Datum. Lat/Long Grid

0 1 2 Miles

Operations
Div C/Div H



Operations
Div L

Operations

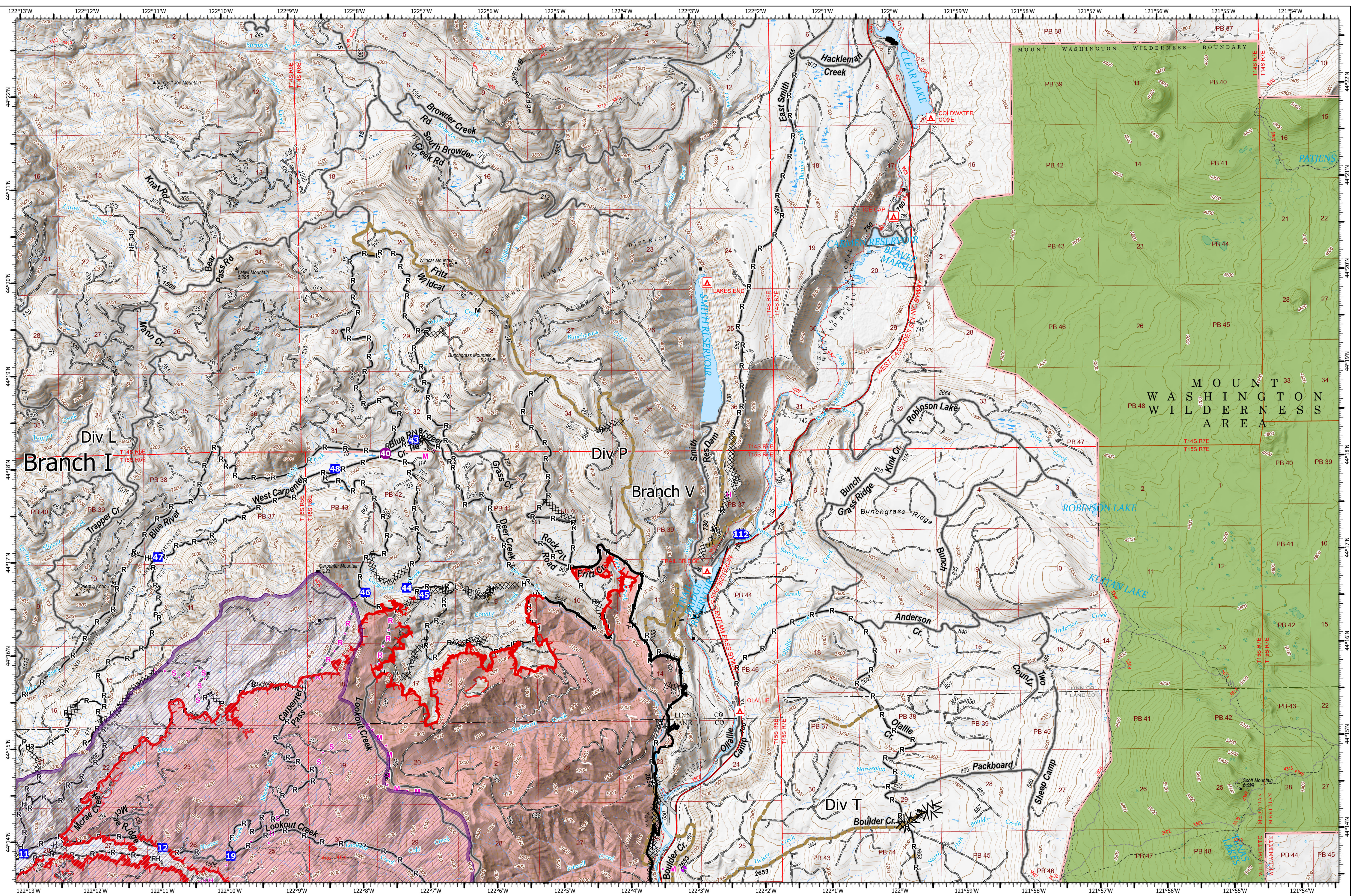
Lookout
ORWIF-230327
09/21/2023
25640 acres at 9/20/2023 @ 0000
Acres from IR & GPS

- | | | | | |
|-------------------------------------|-----------------------------------|-----------------------------------|-----------------------------------|------------------------------------|
| ● Hellspot | — Completed Road as Line | --- Other | ■ Fruit Growers Supply Co Inc | ■ US Bureau of Land Management |
| ■ Drop Point | — Planned Hand Line | — Repair Line | ■ Giustina (Winberry) | ■ US Forest Service |
| ⊗ Completed Dozer Line | — Planned Mixed Construction Line | — Road Repair | ■ Government Unspecified | ■ Waning Family LLC |
| Λ Completed Fuel Break | — Planned Road as Line | — Fire Area | ■ Oregon Dept of State Lands | ■ Weyerhaeuser Timber Holdings Inc |
| — Completed Hand Line | — Planned Secondary Line | — Cadore Timber Co | ■ Pangaea Pacific Timberlands LLC | ■ De-Energized Transmission Line |
| — Completed Mixed Construction Line | — Access or Improved Road | — Franklin-Clarkson Timber Co LLC | | |



9/20/2023 2036
North American 1983 Datum. Lat/Long Grid
0 1 2 Miles

Operations
Div L



Operations
Div P

Operations

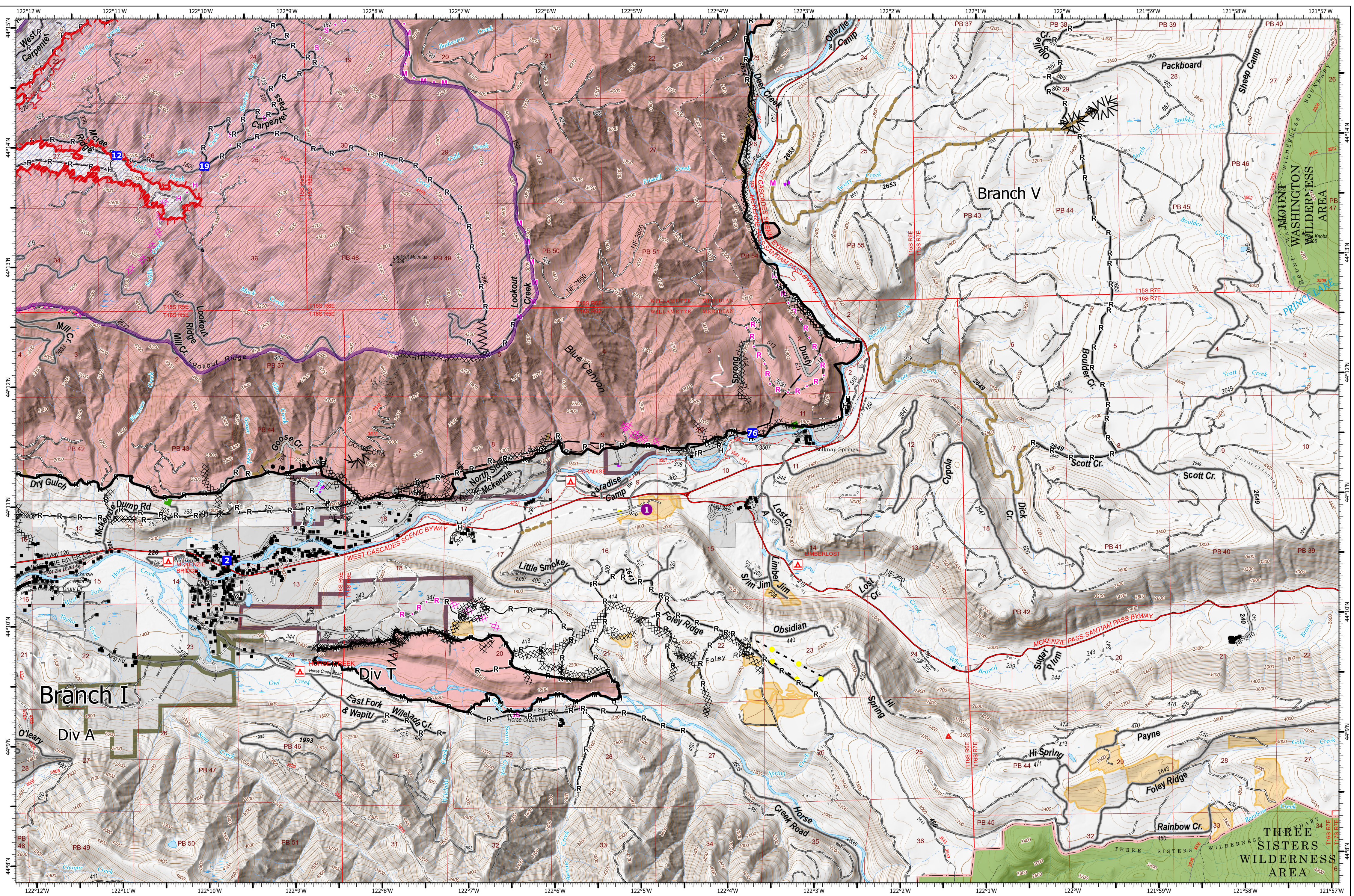
Lookout
ORWIF-230327
09/21/2023
25640 acres at 9/20/2023 @ 0000
Acres from IR & GPS

- | | | | | | |
|-------------------------------------|-----------------------------------|--------------------------------|-----------------------------------|-----------------------------------|------------------------------------|
| ● Helispot | — Completed Road as Line | — Access or Improved Road | ■ Fire Area | ■ Oregon Dept of State Lands | ■ Weyerhaeuser Timber Holdings Inc |
| ■ Drop Point | ✖ Planned Dozer Line | ● Highlighted Feature | ■ Cadore Timber Co | ■ Pangaea Pacific Timberlands LLC | ■ De-Energized Transmission Line |
| ✖ Completed Dozer Line | — Planned Hand Line | — Other | ■ Franklin-Clarkson Timber Co LLC | ■ US Bureau of Land Management | |
| Λ Completed Fuel Break | — Planned Mixed Construction Line | — Repair Line | ■ Fruit Growers Supply Co Inc | ■ US Forest Service | |
| H Completed Hand Line | — Planned Road as Line | — Road Repair | ■ Giustina (Winberry) | ■ Waning Family LLC | |
| M Completed Mixed Construction Line | ● Planned Secondary Line | — UAS Launch and Recovery Zone | ■ Government Unspecified | | |



9/20/2023 2039
North American 1983 Datum, Lat/Long Grid
0 1 2 Miles

Operations
Div P



Operations
Div T

Operations

Lookout
ORWIF-230327
09/21/2023
25640 acres at 9/20/2023 @ 0000
Acres from IR & GPS

- | | | | | | |
|------------------------|-------------------------------------|-----------------------------------|-----------------------------------|-----------------------------------|------------------------------------|
| ● Hellsport | — Completed Mixed Construction Line | — Access or Improved Road | — UAS Launch and Recovery Zone | — Giustina (Winberry) | — Waning Family LLC |
| ■ Drop Point | — Completed Road as Line | — Planned Dozer Line | — Fire Area | — Government Unspecified | — Weyerhaeuser Timber Holdings Inc |
| — Completed Burnout | — Planned Hand Line | — Planned Mixed Construction Line | — Previous RX Burn | — Oregon Dept of State Lands | — De-Energized Transmission Line |
| — Completed Dozer Line | — Planned Mixed Construction Line | — Planned Road as Line | — Cadore Timber Co | — Pangaea Pacific Timberlands LLC | |
| — Completed Fuel Break | — Road Repair | | — Franklin-Clarkson Timber Co LLC | — US Bureau of Land Management | |
| — Completed Hand Line | — Escape Route | | — Fruit Growers Supply Co Inc | — US Forest Service | |



9/20/2023 2041
North American 1983 Datum, Lat/Long Grid
0 1 2 Miles

Operations
Div T