

Repair
Div A

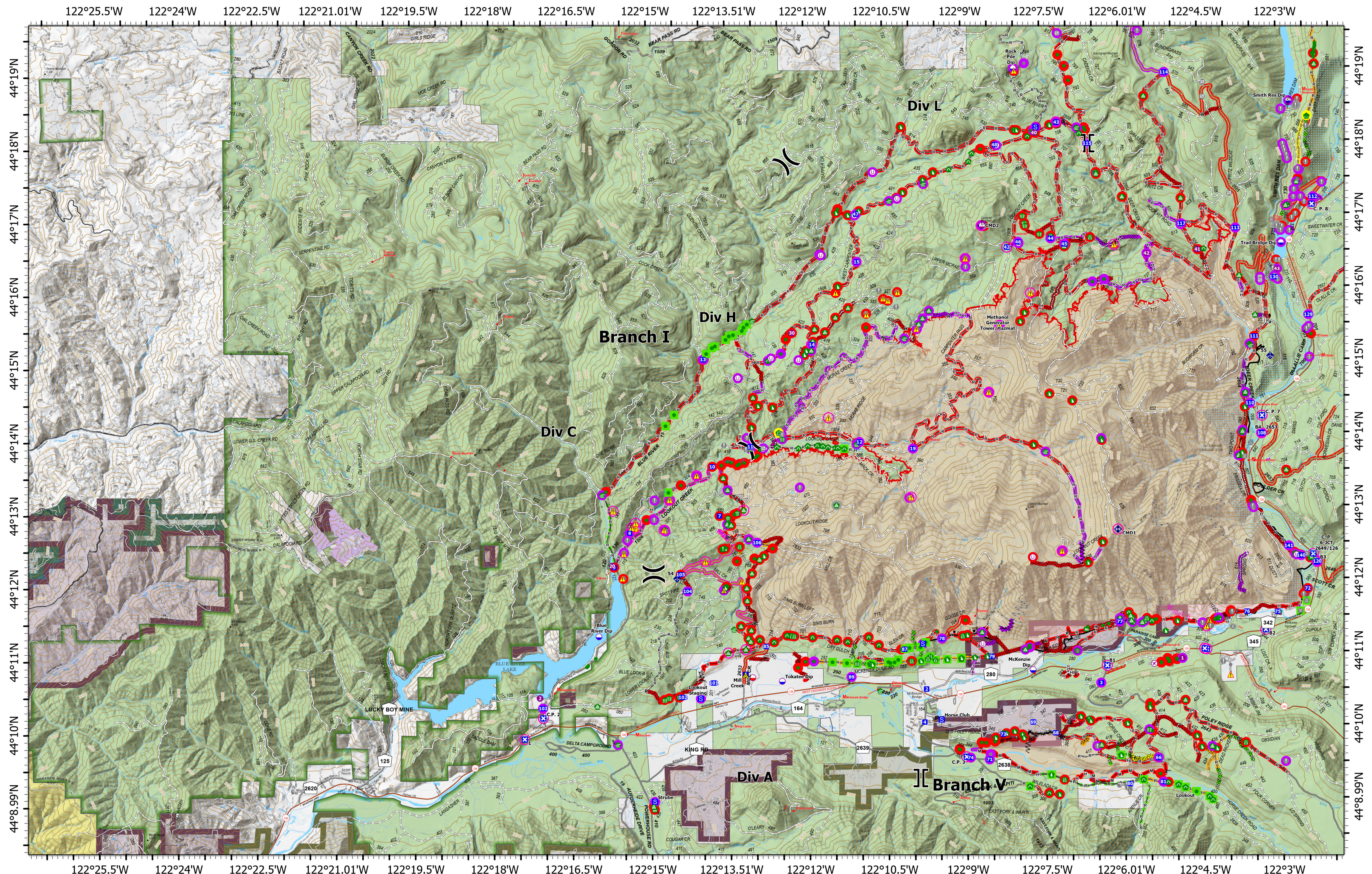
Lookout
 ORWIF-230327
 09/21/2023
 Acres from IR & GPS
 25640 acres at 9/20/2023 @ 0000

<ul style="list-style-type: none"> In Use - Fire Management Needs Assessment Repair Needed Completed - Inspected Other - See Comments In Use - Fire Management Needs Assessment Repair Needed 	<ul style="list-style-type: none"> In Progress Completed - Ready for Inspection Completed - Inspected No Repair Needed Other - See Comments Airstrip or Airport Dip Site Mobile Retardant Base Helispot 	<ul style="list-style-type: none"> Unimproved Landing Area Division Break Branch Break Drop Point Closure Camp Staging Area Value at Risk Other 	<ul style="list-style-type: none"> Gate Bridge Water Development or Draft Site Stream Crossing Road Repair Resource Location Repair Point Landing or Log Deck Hazard Tree 	<ul style="list-style-type: none"> Dozer Push Culvert Clean Up Area Mobile Weather Unit Repeater Safety Zone Hazard Completed Burnout Completed Dozer Line 	<ul style="list-style-type: none"> Completed Fuel Break Completed Hand Line Completed Mixed Construction Line Completed Road as Line Planned Dozer Line Access or Improved Road Other Repair Line 	<ul style="list-style-type: none"> Road Repair Retardant Drop UAS Launch and Recovery Zone Contained Uncontained Fire Edge Wildfire Daily Fire Perimeter Franklin-Clarkson Timber Co LLC 	<ul style="list-style-type: none"> Gustina (Winberry) Oregon Dept of State Lands
---	--	--	--	---	---	---	--

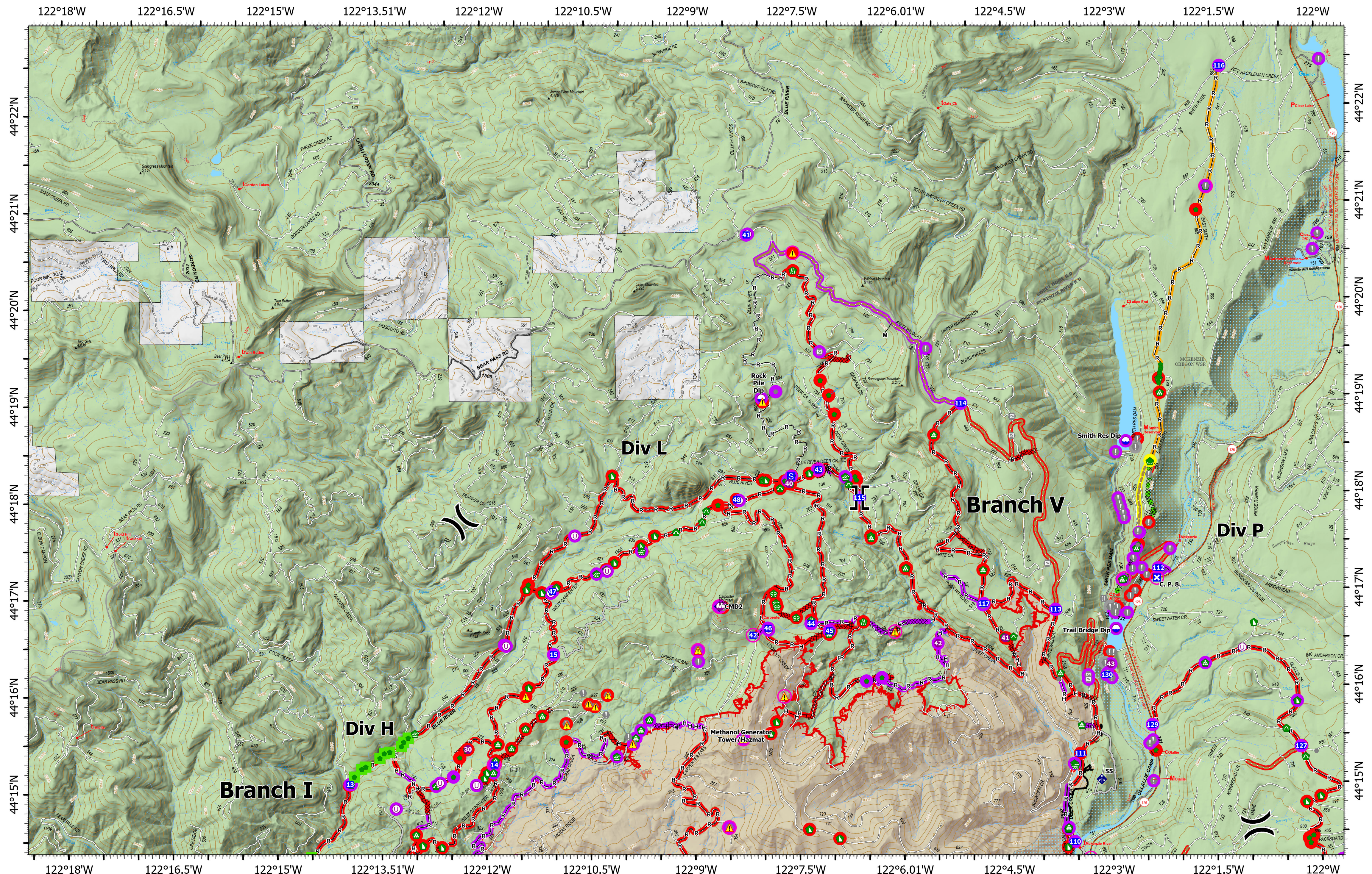
9/20/2023 2033
 North American 1983 Datum. LatLong Grid

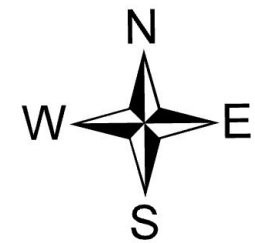

0 0.25 0.5 1 1.5 Miles

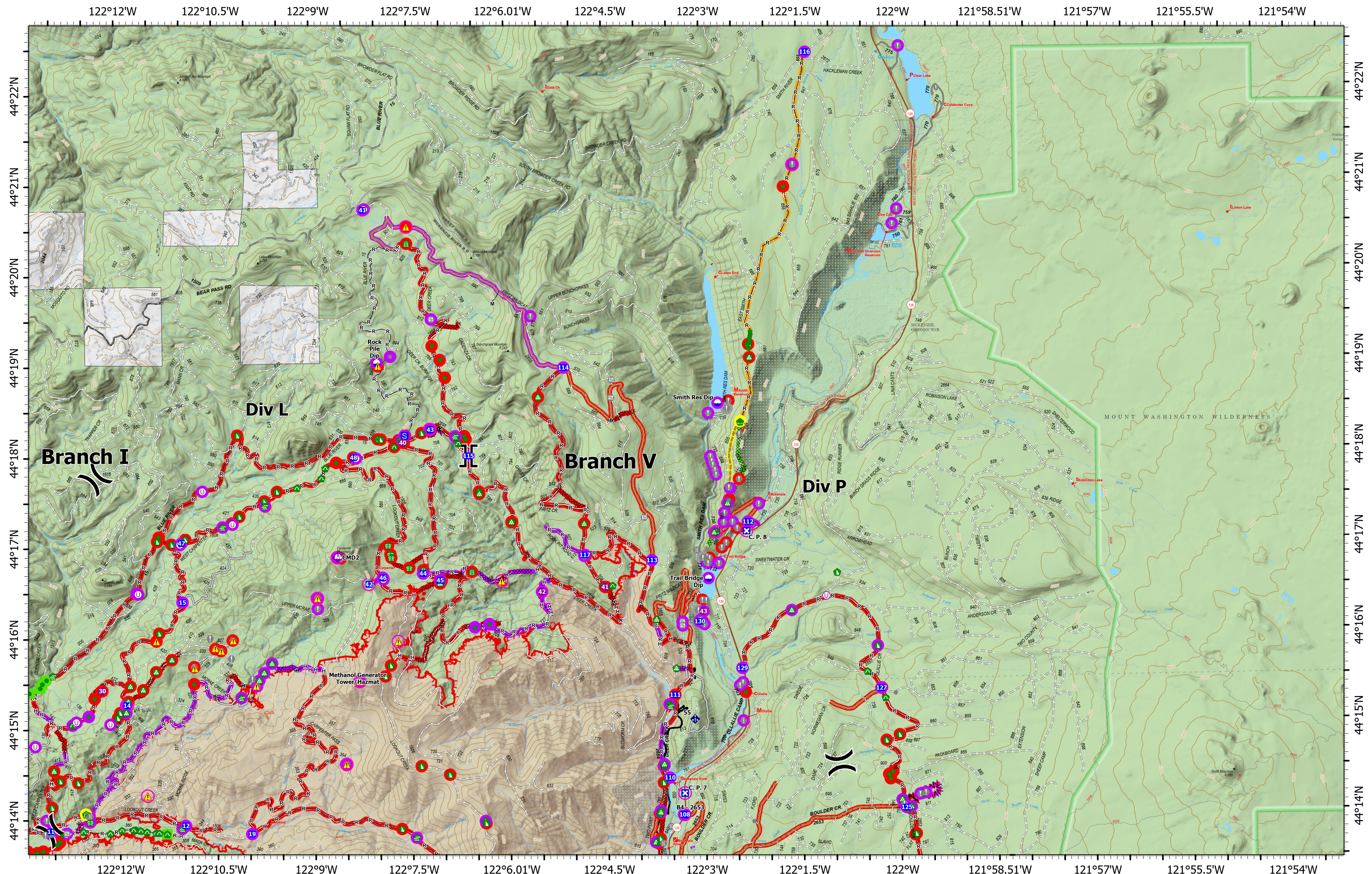
Repair
 Div A


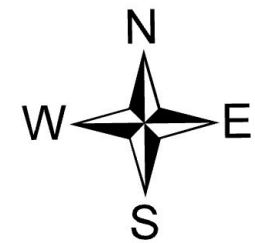

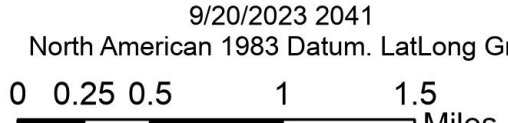


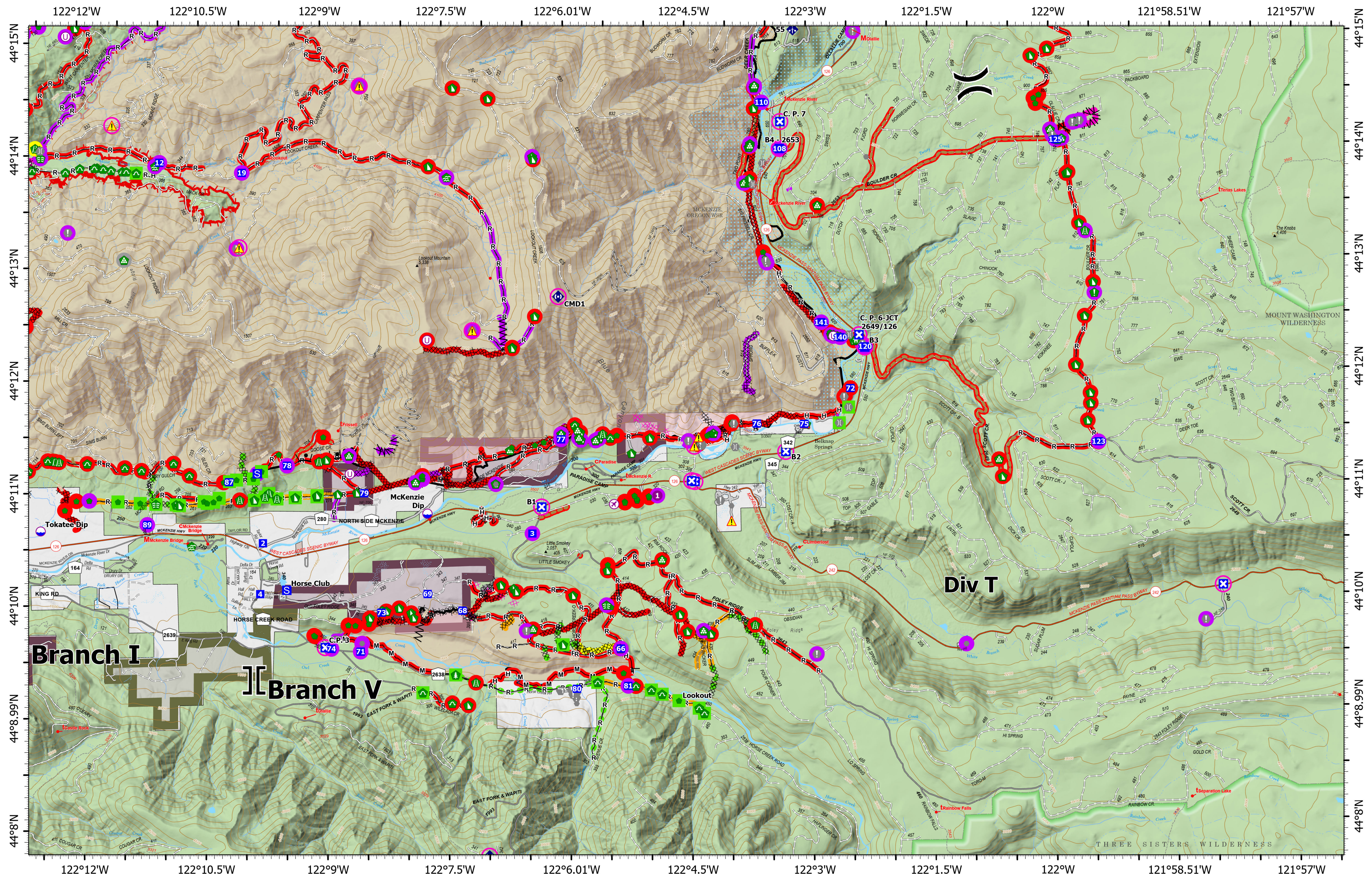
Repair Div C/Div H	<h1 style="text-align: center;">Repair</h1> <h2 style="text-align: center;">Lookout</h2> <h3 style="text-align: center;">ORWIF-230327</h3> <h4 style="text-align: center;">09/21/2023</h4> <p style="text-align: center;">Acres from IR & GPS 25640 acres at 9/20/2023 @ 0000</p>		<ul style="list-style-type: none"> ○ In Use - Fire Management ● Needs Assessment ● Repair Needed ● Completed - Ready for Inspection ● Completed - Inspected ● Other - See Comments ○ In Use - Fire Management 		<ul style="list-style-type: none"> ○ Needs Assessment ○ In Progress ○ Completed - Ready for Inspection ○ Completed - Inspected ○ No Repair Needed ○ Other - See Comments ○ Airstrip or Airport 		<ul style="list-style-type: none"> ○ Dip Site ▲ Mobile Retardant Base ● Hellsport ○ Sling Site ○ Unimproved Landing Area) Division Break Branch Break ■ Drop Point 		<ul style="list-style-type: none"> ■ Closure ■ Staging Area ● Value at Risk ○ Other ○ Gate ○ Bridge ○ Water Development or Draft Site 		<ul style="list-style-type: none"> ■ Structure Wrap ■ Stream Crossing ■ Road Repair ■ Resource Location ■ Repair Point ■ Landing or Log Deck ■ Hazard Tree ■ Dozer Push ■ Culvert 		<ul style="list-style-type: none"> ■ Clean Up Area ■ Mobile Weather Unit ■ Repeater ■ Safety Zone ■ Hazard ■ Completed Burnout ■ Completed Dozer Line ■ Completed Fuel Break ■ Completed Hand Line 		<ul style="list-style-type: none"> — Completed Mixed Construction Line — Completed Road as Line — Planned Dozer Line — Access or Improved Road — Other — Repair Line — Road Repair — Retardant Drop 		<ul style="list-style-type: none"> — UAS Launch and Recovery Zone — Contained — Uncontained Fire Edge — Wildfire Daily Fire Perimeter — Cadore Timber Co — Franklin-Clarkson Timber Co LLC — Giustina (Winberry) 		<ul style="list-style-type: none"> ■ Oregon Dept of State Lands ■ Weyerhaeuser Timber Holdings Inc 	
							<p>9/20/2023 2035</p> <p>North American 1983 Datum. LatLong Grid</p> <p>0 0.250.5 1 1.5 2 Miles</p>		<p style="writing-mode: vertical-rl; transform: rotate(180deg);">Repair</p> <p style="writing-mode: vertical-rl; transform: rotate(180deg);">Div C/Div H</p>											



Repair Div L	<h1>Repair</h1> <h2>Lookout</h2> <h3>ORWIF-230327</h3> <h4>09/21/2023</h4> <p><i>Acres from IR & GPS</i> 25640 acres at 9/20/2023 @ 0000</p>		<ul style="list-style-type: none"> ○ In Use - Fire Management ○ Needs Assessment ● Repair Needed ● Completed - Ready for Inspection ■ Completed - Inspected ● Other - See Comments 	<ul style="list-style-type: none"> ▬ In Use - Fire Management ▬ Needs Assessment ▬ Repair Needed ▬ In Progress ▬ Completed - Ready for Inspection ▬ Completed - Inspected ▬ No Repair Needed 	<ul style="list-style-type: none"> ○ Dip Site ○ Helislot ○ Sling Site ○ Unimproved Landing Area ⋈ Division Break ⋈ Branch Break ■ Drop Point ⊠ Closure 	<ul style="list-style-type: none"> ■ Staging Area ● Value at Risk ● Other ⊠ Gate ⊠ Bridge ⊠ Water Development or Draft Site ⊠ Stream Crossing ⊠ Road Repair 	<ul style="list-style-type: none"> ● Repair Point ⊠ Landing or Log Deck ⊠ Dozer Push ⊠ Culvert ⊠ Mobile Weather Unit ⊠ Repeater ⊠ Hazard ⊠ Completed Dozer Line 	<ul style="list-style-type: none"> ▬ Completed Fuel Break ▬ Completed Hand Line ▬ Completed Mixed Construction Line ▬ Completed Road as Line ▬ Access or Improved Road ▬ Other ▬ Repair Line 	<ul style="list-style-type: none"> ▬ Road Repair ▬ Contained ▬ Uncontained Fire Edge ▬ Wildfire Daily Fire Perimeter 				Repair Div L
	<p>9/20/2023 2038 North American 1983 Datum. LatLong Grid</p> <p>0 0.25 0.5 1 1.5 Miles</p>												



Repair Div P	<h1>Repair</h1> <h2>Lookout</h2> <h3>ORWIF-230327</h3> <h4>09/21/2023</h4> <p><i>Acres from IR & GPS</i> 25640 acres at 9/20/2023 @ 0000</p>	<ul style="list-style-type: none"> ○ In Use - Fire Management ○ Needs Assessment ● Repair Needed ● Completed - Ready for Inspection ■ Completed - Inspected ● Other - See Comments — In Use - Fire Management 	<ul style="list-style-type: none"> — Needs Assessment — Repair Needed — In Progress — Completed - Ready for Inspection — Completed - Inspected — No Repair Needed ○ Dip Site ● Helispot 	<ul style="list-style-type: none"> ○ Sling Site U Unimproved Landing Area X Division Break II Branch Break D Drop Point X Closure S Staging Area V Value at Risk 	<ul style="list-style-type: none"> ● Other G Gate B Bridge W Water Development or Draft Site S Stream Crossing A Road Repair R Repair Point L Landing or Log Deck 	<ul style="list-style-type: none"> F Fence - Cut/Damaged C Culvert M Mobile Weather Unit R Repeater H Hazard X Completed Dozer Line M Completed Fuel Break H Completed Hand Line 	<ul style="list-style-type: none"> M Completed Mixed Construction Line R Completed Road as Line — Access or Improved Road — Other — Repair Line — Road Repair — UAS Launch and Recovery Zone 	<ul style="list-style-type: none"> — Contained — Uncontained Fire Edge — Wildfire Daily Fire Perimeter 		<div style="text-align: center;">  <p>9/20/2023 2041 North American 1983 Datum. LatLong Grid</p> </div>		Repair Div P
	<div style="display: flex; justify-content: space-between; align-items: center;"> <div> <p>0 0.25 0.5 1 1.5 Miles</p>  </div> </div>											



Repair
Div T

Lookout
 ORWIF-230327
 09/21/2023
 Acres from IR & GPS
 25640 acres at 9/20/2023 @ 0000

In Use - Fire Management	Needs Assessment	Dip Site	Value at Risk	Resource Location	Repeater	Planned Dozer Line	Uncontained Fire Edge
Needs Assessment	Repair Needed	Helispot	Other	Repair Point	Hazard	Access or Improved Road	Wildfire Daily Fire Perimeter
Repair Needed	In Progress	Unimproved Landing Area	Gate	Landing or Log Deck	Completed Burnout	Other	Franklin-Clarkson Timber Co LLC
Completed - Ready for Inspection	Completed - Ready for Inspection	Division Break	Bridge	Hazard Tree	Completed Dozer Line	Repair Line	Giustina (Winberry)
Completed - Inspected	Completed - Inspected	Branch Break	Water Development or Draft Site	Fence - Cut/Damaged	Completed Fuel Break	Road Repair	
Other - See Comments	No Repair Needed	Drop Point	Structure Wrapping	Culvert	Completed Hand Line	Retardant Drop	
In Use - Fire Management	Other - See Comments	Closure	Stream Crossing	Clean Up Area	Completed Mixed Construction Line	UAS Launch and Recovery Zone	
	Airstrip or Airport	Staging Area	Road Repair	Mobile Weather Unit	Completed Road as Line	Contained	

9/20/2023 2043
 North American 1983 Datum. LatLong Grid

0 0.25 0.5 1 1.5 Miles

Repair
 Div T