

Operations
Div A

Operations

Lookout

ORWIF-230327

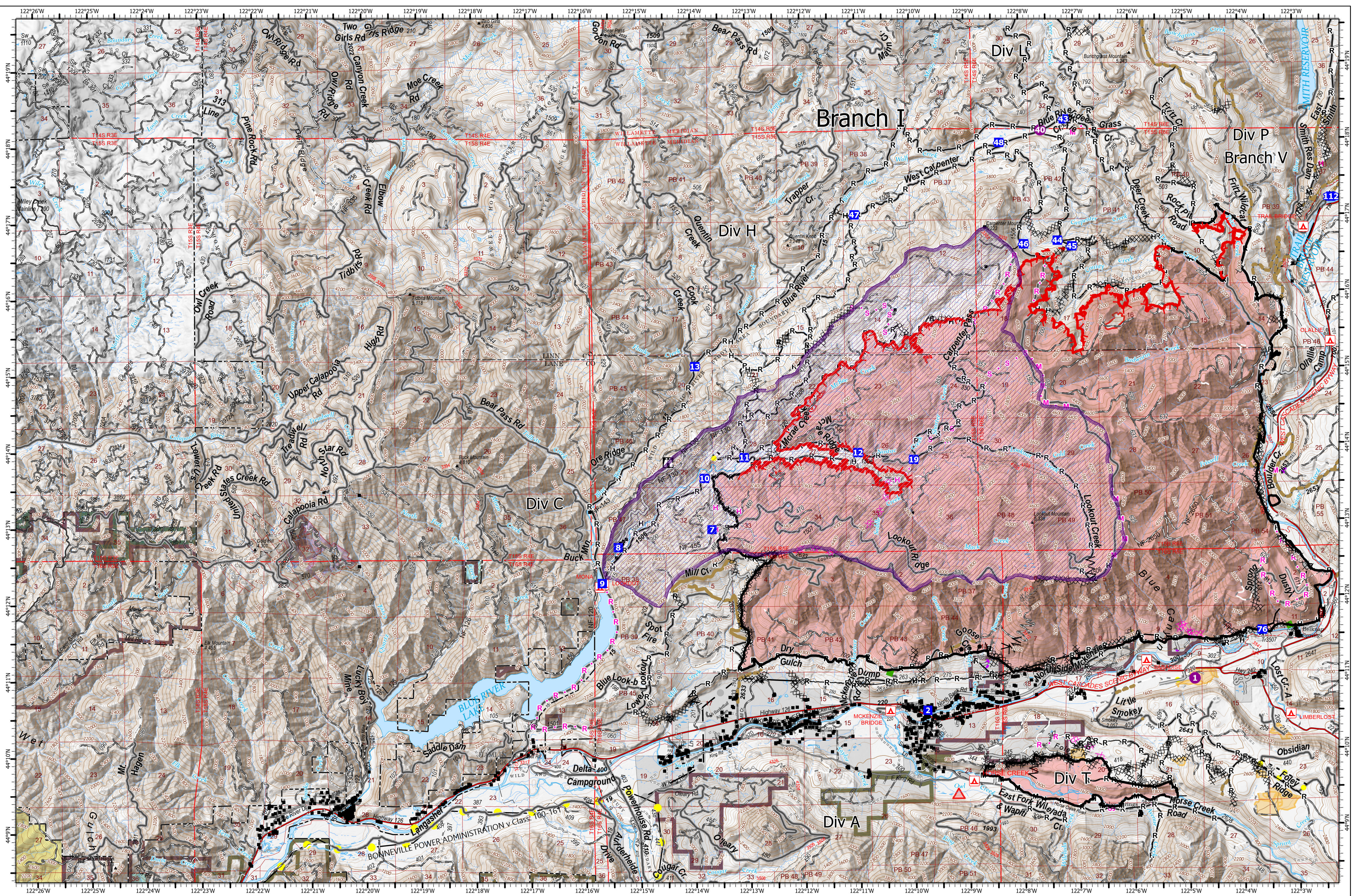
09/22/2023

25,659 acres at 9/20/2023 @ 2224
Acres from IR & GPS

- | | | | | | |
|--------------------------|-------------------------------------|---------------------------|-----------------------------------|-----------------------------------|------------------------------------|
| ● Helispot | — Completed Mixed Construction Line | — Planned Secondary Line | — UAS Launch and Recovery Zone | — Giustina (Winberry) | — Waning Family LLC |
| ■ Drop Point | — Completed Road as Line | — Access or Improved Road | — Fire Area | — Government Unspecified | — Weyerhaeuser Timber Holdings Inc |
| — Completed Burnout | — Planned Dozer Line | — Highlighted Feature | — Previous RX Burn | — Oregon Dept of State Lands | — De-Energized Transmission Line |
| ××× Completed Dozer Line | — Planned Hand Line | — Other | — Cadore Timber Co | — Pangaea Pacific Timberlands LLC | — Energized Transmission Line |
| ∧∧ Completed Fuel Break | — Planned Mixed Construction Line | — Repair Line | — Franklin-Clarkson Timber Co LLC | — US Bureau of Land Management | |
| — Completed Hand Line | — Planned Road as Line | — Road Repair | — Fruit Growers Supply Co Inc | — US Forest Service | |



Operations
Div A



Operations
Div C/Div H

Operations

Lookout

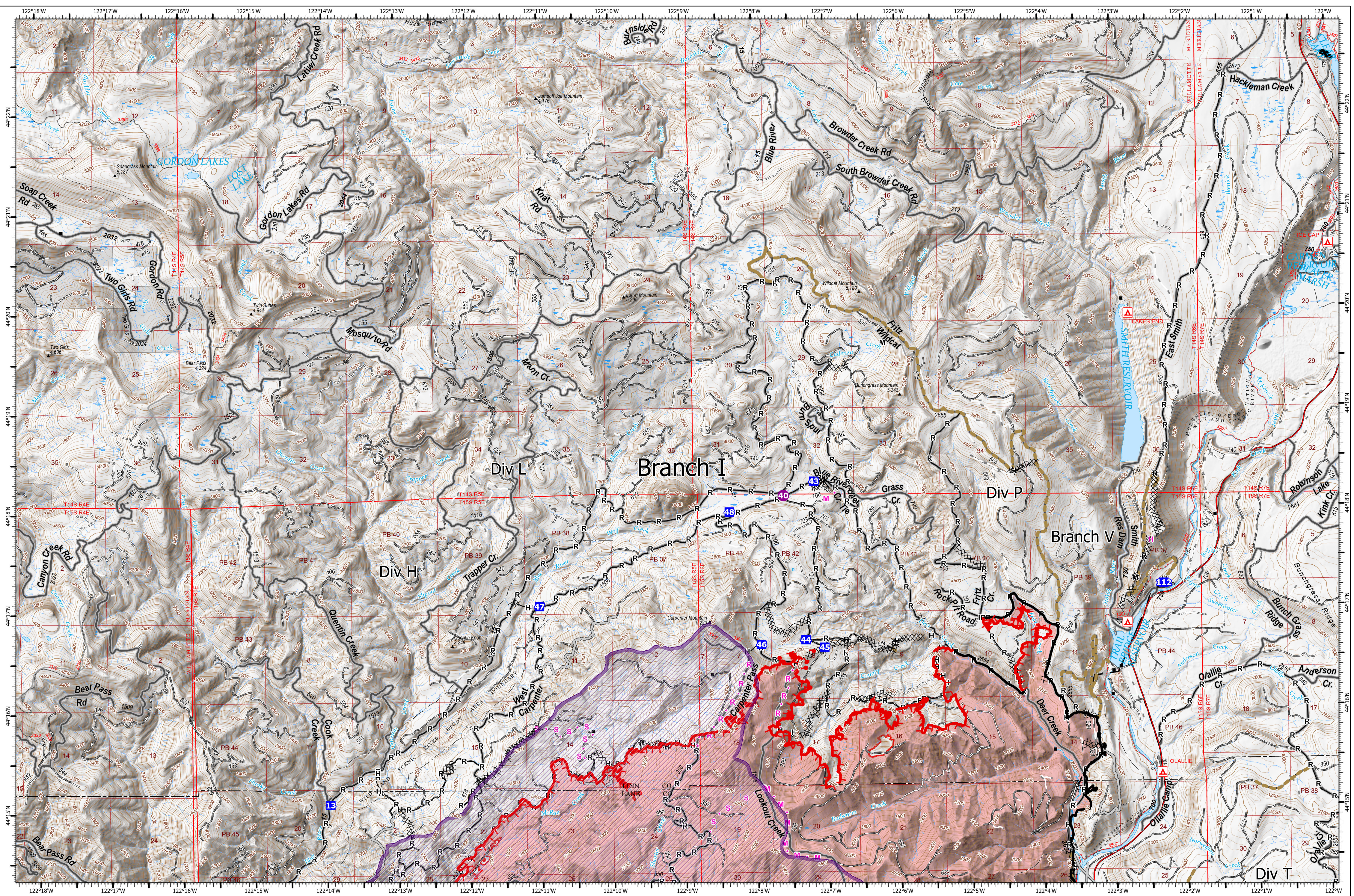
ORWIF-230327
09/22/2023
25,659 acres at 9/20/2023 @ 2224
Acres from IR & GPS

- | | | | | | |
|------------------------|-------------------------------------|---------------------------|-----------------------------------|-----------------------------------|------------------------------------|
| ● Helispot | — Completed Mixed Construction Line | — Access or Improved Road | — UAS Launch and Recovery Zone | — Giustina (Winberry) | — Waning Family LLC |
| ■ Drop Point | — Completed Road as Line | ● Highlighted Feature | — Fire Area | — Government Unspecified | — Weyerhaeuser Timber Holdings Inc |
| ⌂ Lookout | ✕ Planned Dozer Line | — Other | — Previous RX Burn | — Oregon Dept of State Lands | — De-Energized Transmission Line |
| ⌂ Completed Burnout | — Planned Hand Line | — Repair Line | — Cadore Timber Co | — Pangaea Pacific Timberlands LLC | — Energized Transmission Line |
| ⌂ Completed Dozer Line | — Planned Mixed Construction Line | — Road Repair | — Franklin-Clarkson Timber Co LLC | — US Bureau of Land Management | |
| ⌂ Completed Fuel Break | — Planned Road as Line | — Escape Route | — Fruit Growers Supply Co Inc | — US Forest Service | |
| — Completed Hand Line | | | | | |

9/21/2023 2026
North American 1983 Datum. Lat/Long Grid

0 1 2 Miles

Operations
Div C/Div H



Operations
Div L

Operations

Lookout

ORWIF-230327

09/22/2023

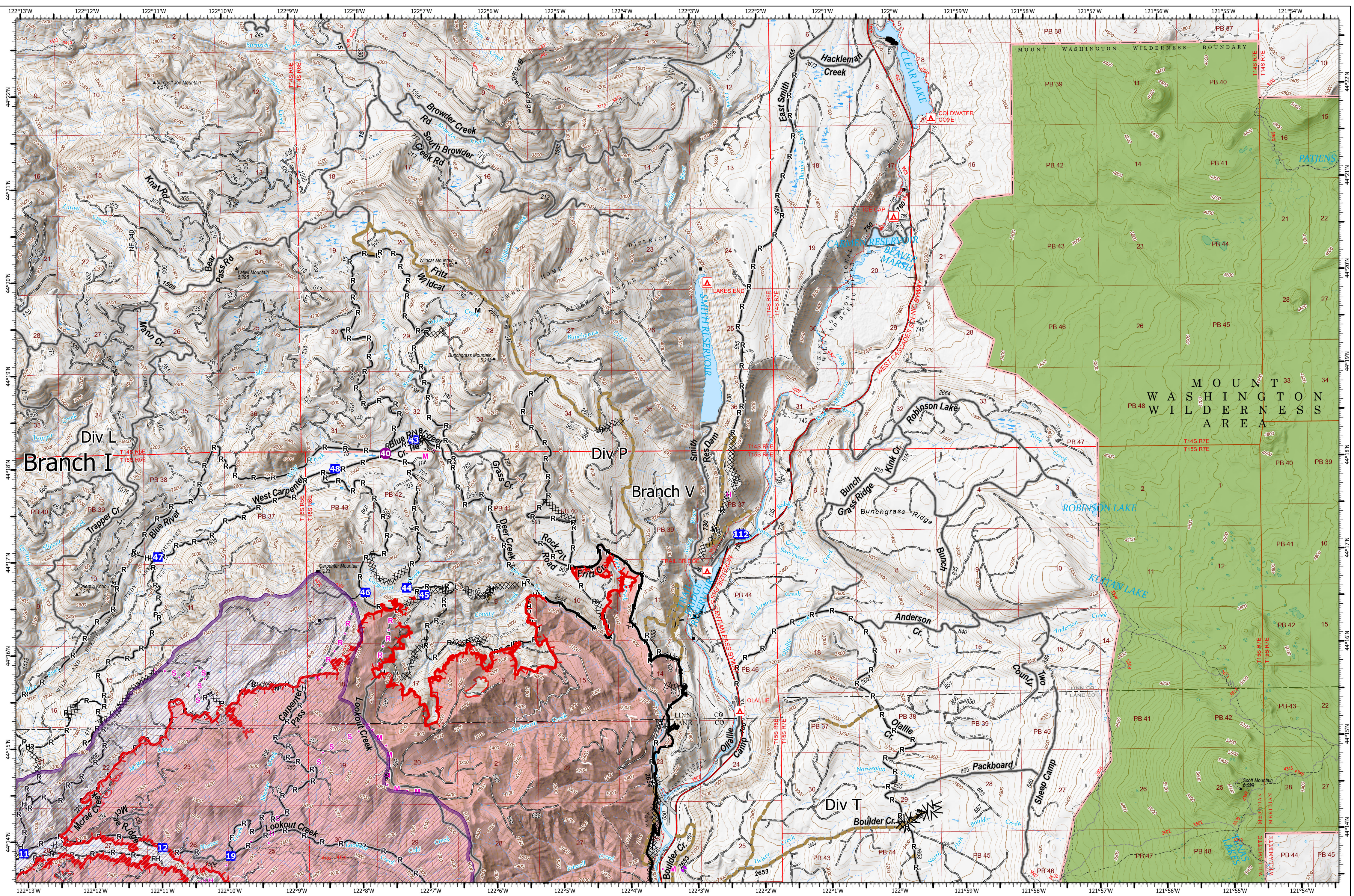
25,659 acres at 9/20/2023 @ 2224
Acres from IR & GPS

- | | | | | |
|-------------------------------------|-----------------------------------|-----------------------------------|-----------------------------------|------------------------------------|
| ● Hellspot | — Completed Road as Line | — Other | ■ Fruit Growers Supply Co Inc | ■ US Bureau of Land Management |
| ■ Drop Point | — Planned Hand Line | — Repair Line | ■ Giustina (Winberry) | ■ US Forest Service |
| ⊗ Completed Dozer Line | — Planned Mixed Construction Line | — Road Repair | ■ Government Unspecified | ■ Waning Family LLC |
| ∧ Completed Fuel Break | — Planned Road as Line | — Fire Area | ■ Oregon Dept of State Lands | ■ Weyerhaeuser Timber Holdings Inc |
| — Completed Hand Line | — Planned Secondary Line | — Cadore Timber Co | ■ Pangaea Pacific Timberlands LLC | ● De-Energized Transmission Line |
| — Completed Mixed Construction Line | — Access or Improved Road | ■ Franklin-Clarkson Timber Co LLC | | |



9/21/2023 2029
North American 1983 Datum. Lat/Long Grid

Operations
Div L



Operations
Div P

Operations

Lookout

ORWIF-230327

09/22/2023

25,659 acres at 9/20/2023 @ 2224
Acres from IR & GPS

- Helispot
- Drop Point
- ⊗ Completed Dozer Line
- ⊗⊗ Planned Dozer Line
- ⊗⊗ Completed Hand Line
- ⊗⊗ Planned Hand Line
- ⊗⊗ Completed Mixed Construction Line
- ⊗⊗ Planned Mixed Construction Line
- ⊗⊗ Completed Road as Line
- ⊗⊗ Planned Road as Line
- ⊗⊗ Planned Secondary Line

- Access or Improved Road
- Highlighted Feature
- Other
- Repair Line
- Road Repair
- UAS Launch and Recovery Zone

- Fire Area
- Cadore Timber Co
- Franklin-Clarkson Timber Co LLC
- Fruit Growers Supply Co Inc
- Giustina (Winberry)
- Government Unspecified

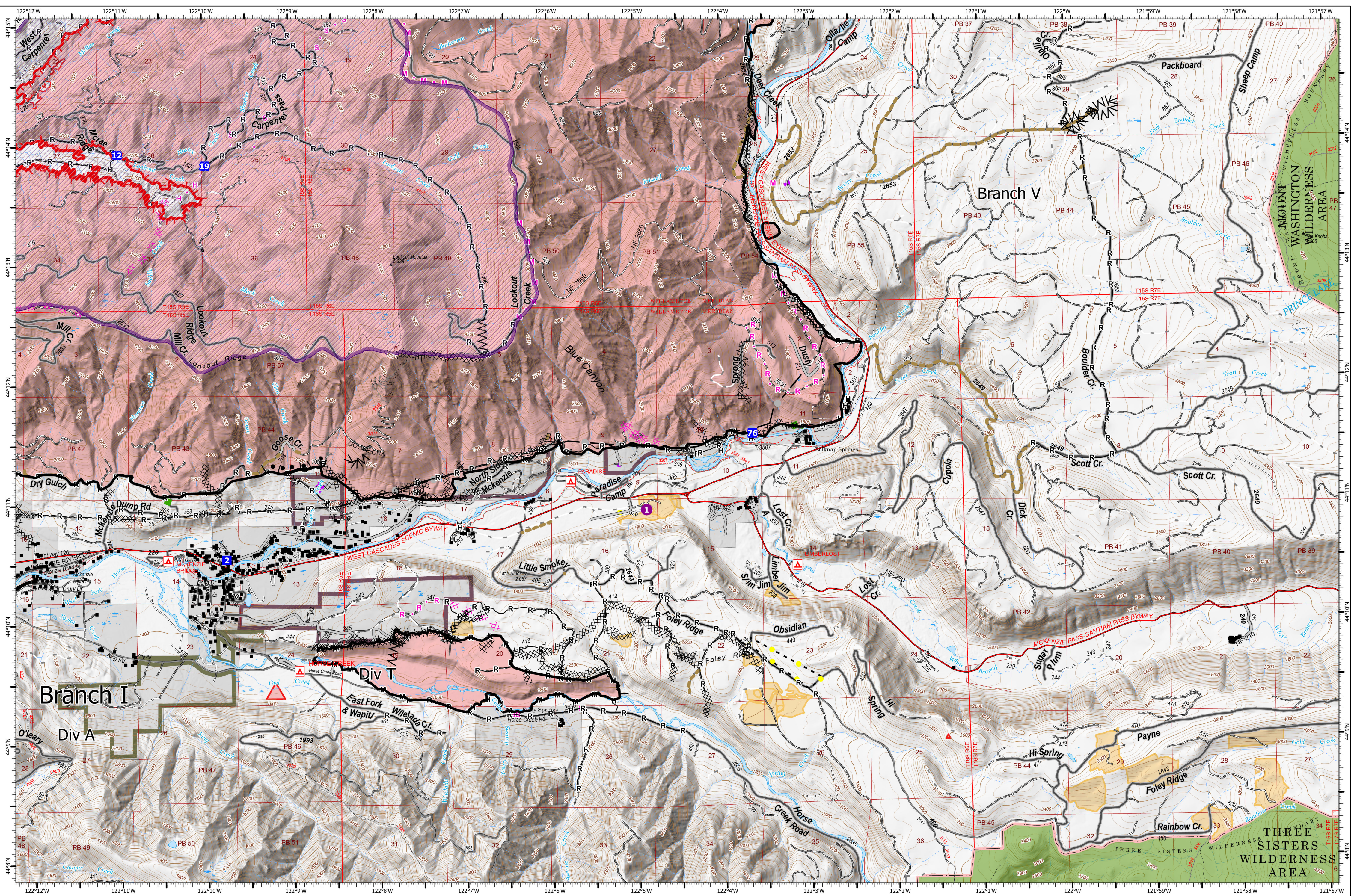
- Oregon Dept of State Lands
- Pangaea Pacific Timberlands LLC
- US Bureau of Land Management
- US Forest Service
- Waning Family LLC

- Weyerhaeuser Timber Holdings Inc
- De-Energized Transmission Line



9/21/2023 2032
North American 1983 Datum, Lat/Long Grid
0 1 2 Miles

Operations
Div P



Operations
Div T

Operations

Lookout

ORWIF-230327

09/22/2023

25,659 acres at 9/20/2023 @ 2224
Acres from IR & GPS

- | | | | | | |
|------------------------|-------------------------------------|-----------------------------------|-----------------------------------|-----------------------------------|------------------------------------|
| ● Hellsport | — Completed Mixed Construction Line | — Access or Improved Road | — UAS Launch and Recovery Zone | — Giustina (Winberry) | — Waning Family LLC |
| ■ Drop Point | — Completed Road as Line | — Planned Dozer Line | — Fire Area | — Government Unspecified | — Weyerhaeuser Timber Holdings Inc |
| — Completed Burnout | — Planned Hand Line | — Planned Mixed Construction Line | — Previous RX Burn | — Oregon Dept of State Lands | — De-Energized Transmission Line |
| — Completed Dozer Line | — Planned Mixed Construction Line | — Planned Road as Line | — Cadore Timber Co | — Pangaea Pacific Timberlands LLC | |
| — Completed Fuel Break | — Road Repair | | — Franklin-Clarkson Timber Co LLC | — US Bureau of Land Management | |
| — Completed Hand Line | — Escape Route | | — Fruit Growers Supply Co Inc | — US Forest Service | |



Operations
Div T