


Operations
Div A


Operations

Lookout


ORWIF-230327
09/27/2023
25,751 acres at 9/22/2023 @ 2109
Acres from IR & GPS

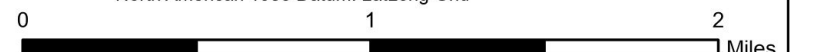
- | | | | | | |
|---|--|--|---|---|--|
| <ul style="list-style-type: none"> ● Helispot ■ Drop Point Completed Burnout Completed Dozer Line Completed Fuel Break Completed Hand Line | <ul style="list-style-type: none"> Completed Mixed Construction Line Completed Road as Line Planned Dozer Line Planned Hand Line Planned Mixed Construction Line Planned Road as Line | <ul style="list-style-type: none"> Access or Improved Road Highlighted Feature Other Repair Line Road Repair Escape Route | <ul style="list-style-type: none"> UAS Launch and Recovery Zone Fire Area Previous RX Burn Cadore Timber Co Franklin-Clarkson Timber Co LLC Fruit Growers Supply Co Inc | <ul style="list-style-type: none"> Giustina (Winberry) Government Unspecified Oregon Dept of State Lands Pangaea Pacific Timberlands LLC US Bureau of Land Management US Forest Service | <ul style="list-style-type: none"> Waning Family LLC Weyerhaeuser Timber Holdings Inc De-Energized Transmission Line Energized Transmission Line |
|---|--|--|---|---|--|





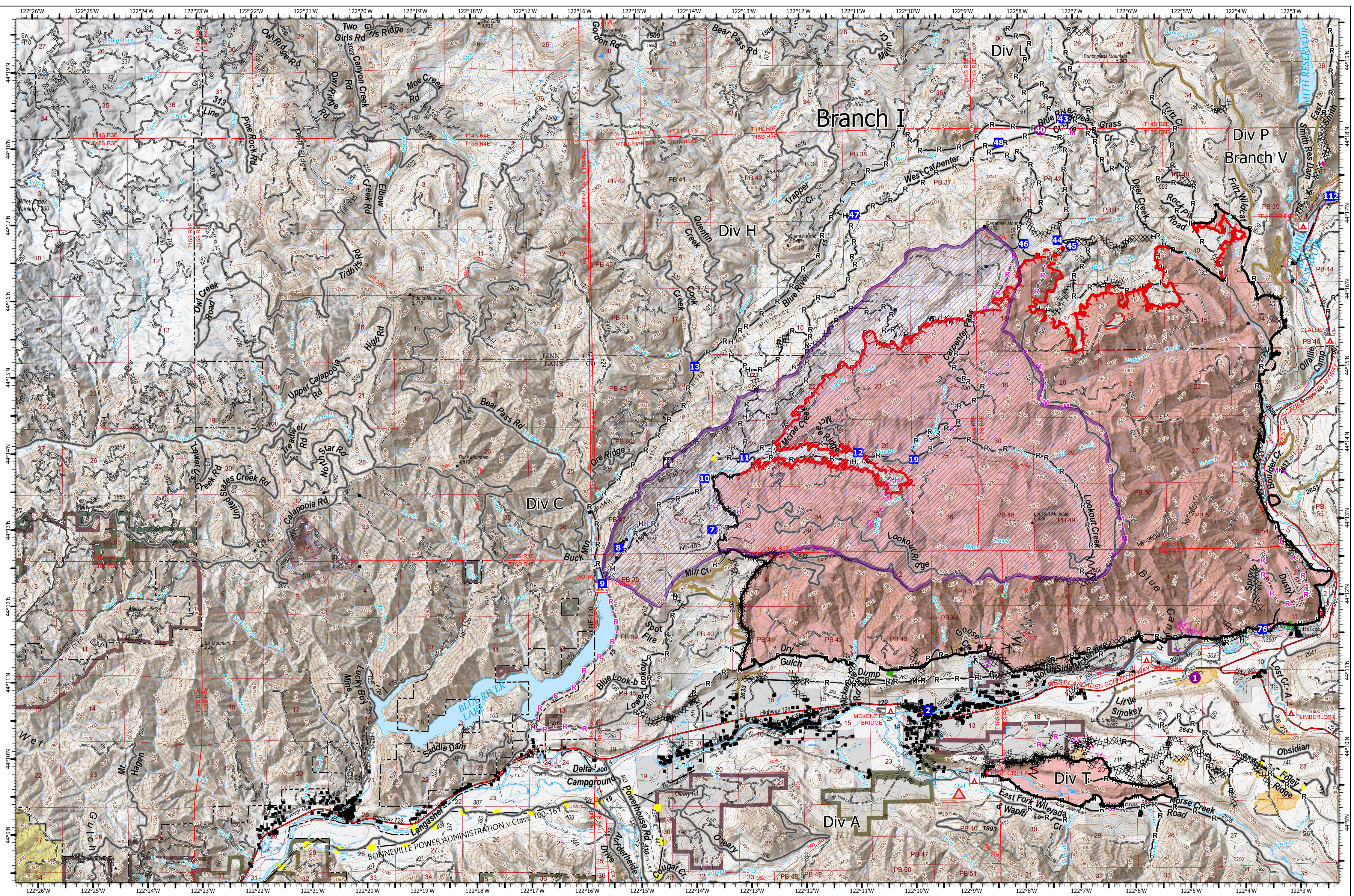
9/26/2023 2030
North American 1983 Datum. Lat/Long Grid





0 1 2 Miles

Operations
Div A



Operations
Div C/Div H

Operations

Lookout
ORWIF-230327

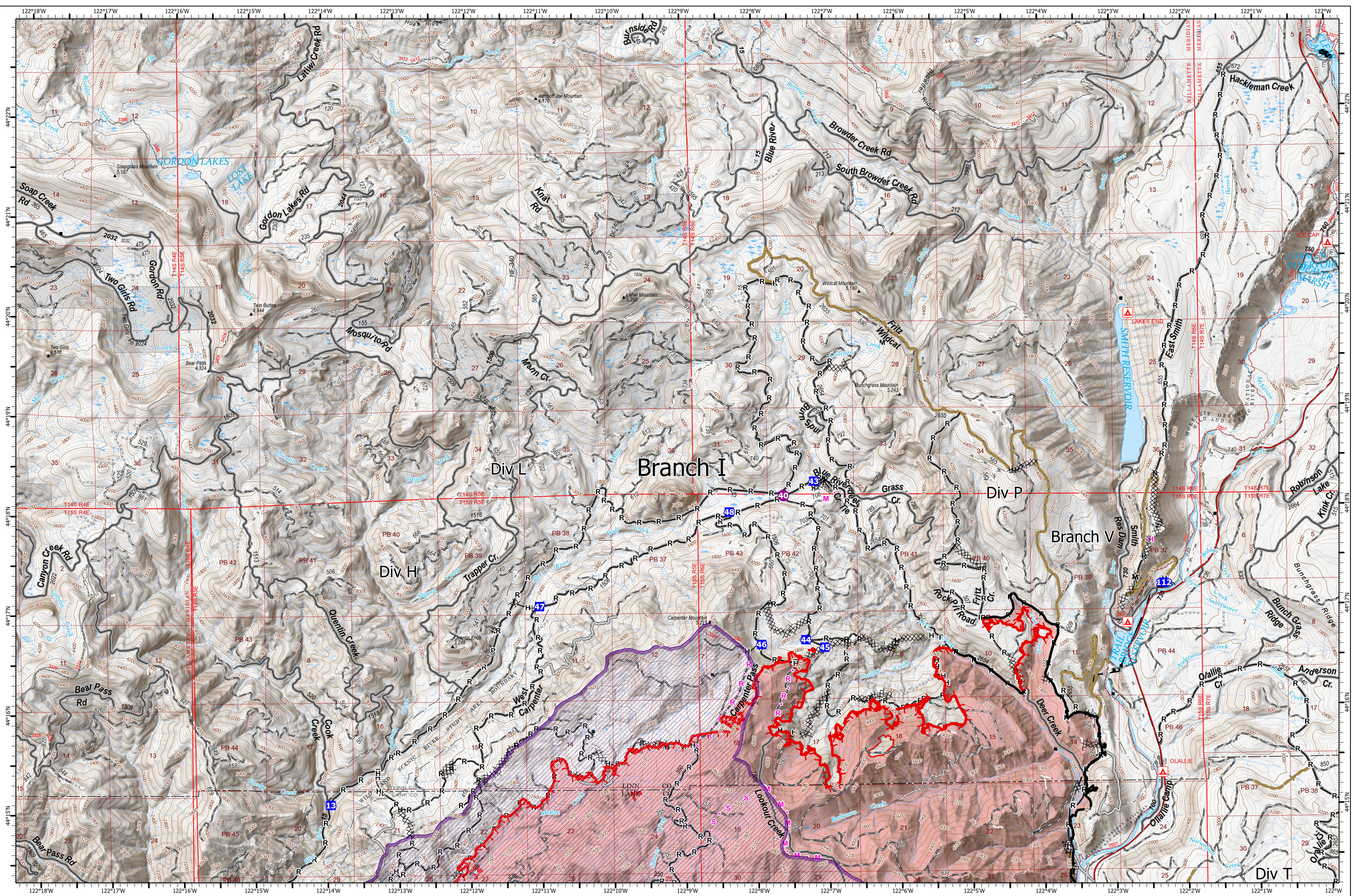
09/27/2023
25,751 acres at 9/22/2023 @ 2109
Acres from IR & GPS

- | | | | | | |
|---------------------------|---------------------------------------|----------------------------|-----------------------------------|-----------------------------------|------------------------------------|
| ● Helispot | M — Completed Mixed Construction Line | S — Planned Secondary Line | 🚀 UAS Launch and Recovery Zone | 🏠 Giustina (Winberry) | 🏠 Waning Family LLC |
| ■ Drop Point | R — Completed Road as Line | — Access or Improved Road | 🔥 Fire Area | 🏠 Government Unspecified | 🏠 Weyerhaeuser Timber Holdings Inc |
| 🏠 Lookout | ✂️ Planned Dozer Line | ● Highlighted Feature | 🔥 Previous RX Burn | 🏠 Oregon Dept of State Lands | 🏠 De-Energized Transmission Line |
| 🏠 Completed Burnout | H — Planned Hand Line | — Other | 🏠 Cadore Timber Co | 🏠 Pangaea Pacific Timberlands LLC | 🏠 Energized Transmission Line |
| ✂️✂️ Completed Dozer Line | M — Planned Mixed Construction Line | 🛠️ Repair Line | 🏠 Franklin-Clarkson Timber Co LLC | 🏠 US Bureau of Land Management | |
| 🏠 Completed Fuel Break | R — Planned Road as Line | 🛠️ Road Repair | 🏠 Fruit Growers Supply Co Inc | 🏠 US Forest Service | |
| H — Completed Hand Line | | 🛠️ Escape Route | | | |



9/26/2023 2022
North American 1983 Datum, Lat/Long Grid
0 1 2 Miles

Operations
Div C/Div H



Operations
Div L

Operations

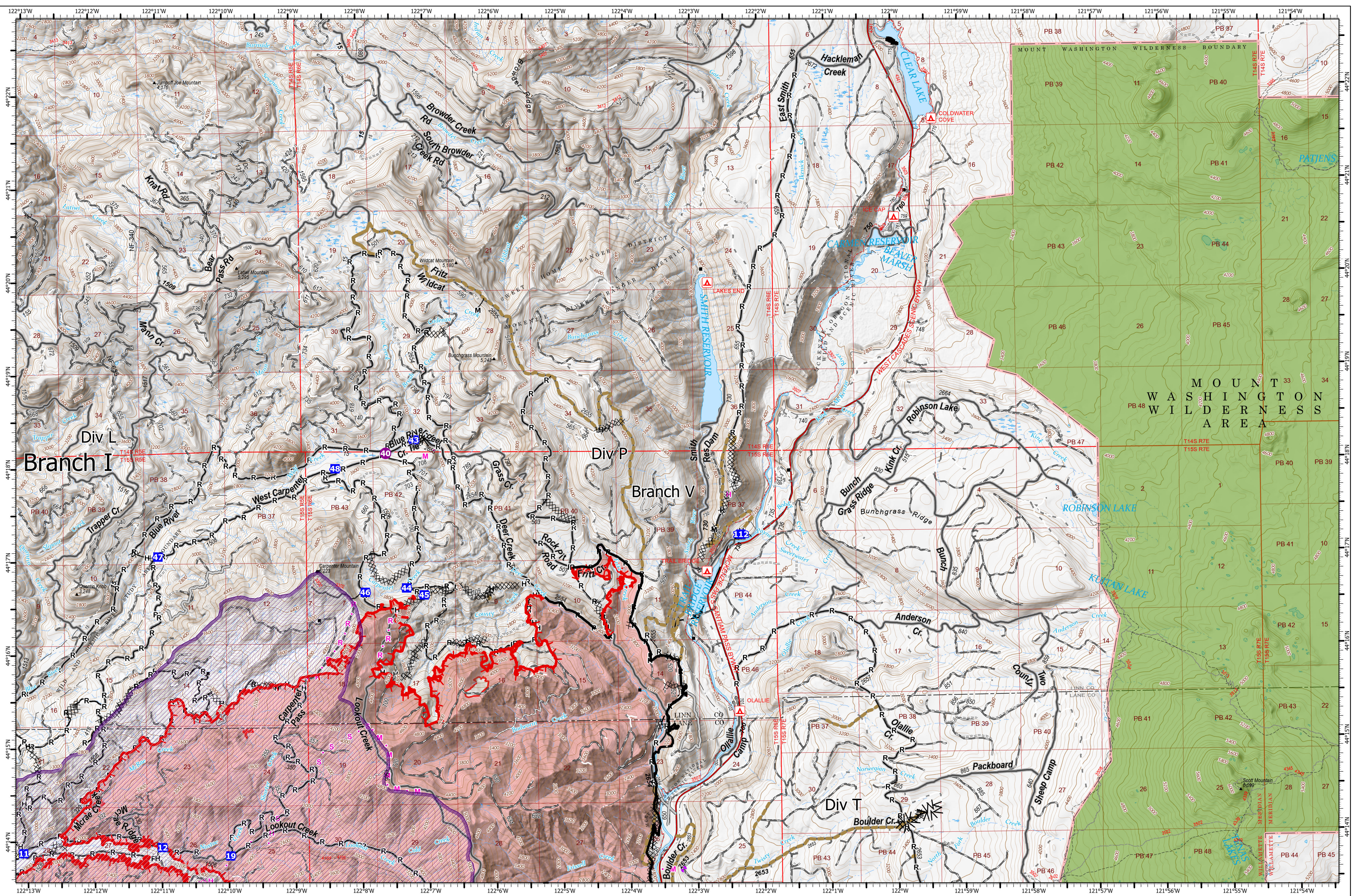
Lookout
ORWIF-230327
09/27/2023
25,751 acres at 9/22/2023 @ 2109
Acres from IR & GPS

- | | | | | |
|-------------------------------------|-----------------------------------|-----------------------------------|-----------------------------------|------------------------------------|
| ● Hellspot | — Completed Road as Line | — Other | ■ Fruit Growers Supply Co Inc | ■ US Bureau of Land Management |
| ■ Drop Point | — Planned Hand Line | — Repair Line | ■ Giustina (Winberry) | ■ US Forest Service |
| ⊗ Completed Dozer Line | — Planned Mixed Construction Line | — Road Repair | ■ Government Unspecified | ■ Waning Family LLC |
| ∧ Completed Fuel Break | — Planned Road as Line | — Fire Area | ■ Oregon Dept of State Lands | ■ Weyerhaeuser Timber Holdings Inc |
| — Completed Hand Line | — Planned Secondary Line | — Cadore Timber Co | ■ Pangaea Pacific Timberlands LLC | ■ De-Energized Transmission Line |
| — Completed Mixed Construction Line | — Access or Improved Road | ■ Franklin-Clarkson Timber Co LLC | | |



9/26/2023 2024
North American 1983 Datum, Lat/Long Grid
0 1 2 Miles

Operations
Div L



Operations
Div P

Operations

Lookout

ORWIF-230327
09/27/2023
25,751 acres at 9/22/2023 @ 2109
Acres from IR & GPS

- Helispot
- Drop Point
- ⊗ Completed Dozer Line
- ⊗ Planned Dozer Line
- ⊗ Completed Hand Line
- ⊗ Planned Hand Line
- ⊗ Completed Mixed Construction Line
- ⊗ Planned Mixed Construction Line
- ⊗ Completed Road as Line
- ⊗ Planned Road as Line
- ⊗ Planned Secondary Line

- Access or Improved Road
- Highlighted Feature
- Other
- Repair Line
- Road Repair
- UAS Launch and Recovery Zone

- Fire Area
- Cadore Timber Co
- Franklin-Clarkson Timber Co LLC
- Fruit Growers Supply Co Inc
- Giustina (Winberry)
- Government Unspecified

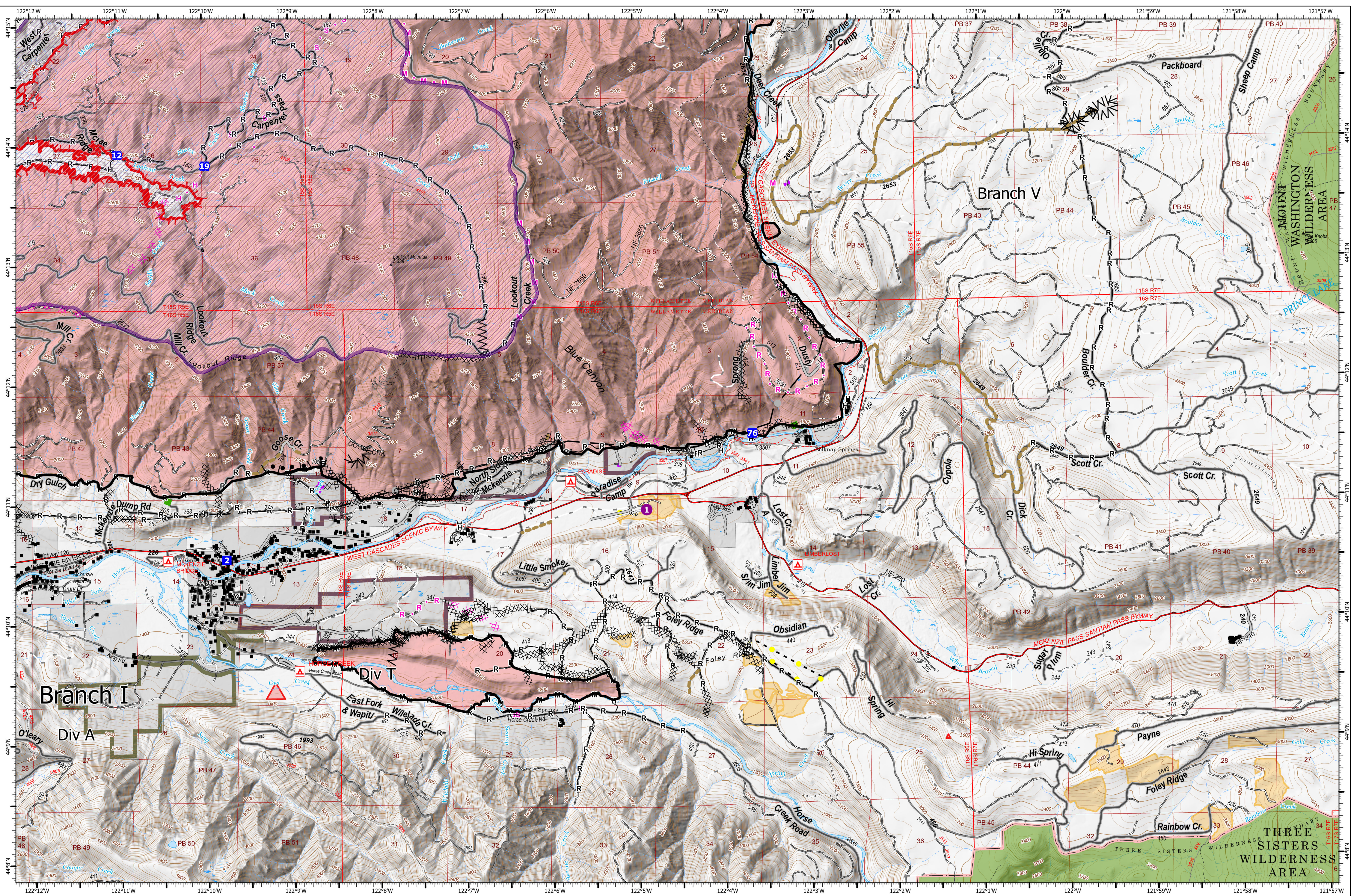
- Oregon Dept of State Lands
- Pangaea Pacific Timberlands LLC
- US Bureau of Land Management
- US Forest Service
- Waning Family LLC

- Weyerhaeuser Timber Holdings Inc
- De-Energized Transmission Line



9/26/2023 2026
North American 1983 Datum, Lat/Long Grid
0 1 2 Miles

Operations
Div P



Operations
Div T

Operations

Lookout
ORWIF-230327
09/27/2023
25,751 acres at 9/22/2023 @ 2109
Acres from IR & GPS

- | | | | | | |
|------------------------|-------------------------------------|-----------------------------------|-----------------------------------|-----------------------------------|------------------------------------|
| ● Helispot | — Completed Mixed Construction Line | — Access or Improved Road | — UAS Launch and Recovery Zone | — Giustina (Winberry) | — Waning Family LLC |
| ■ Drop Point | — Completed Road as Line | — Planned Dozer Line | — Fire Area | — Government Unspecified | — Weyerhaeuser Timber Holdings Inc |
| — Completed Burnout | — Planned Hand Line | — Planned Mixed Construction Line | — Previous RX Burn | — Oregon Dept of State Lands | — De-Energized Transmission Line |
| — Completed Dozer Line | — Planned Mixed Construction Line | — Planned Road as Line | — Cadore Timber Co | — Pangaea Pacific Timberlands LLC | |
| — Completed Fuel Break | — Road Repair | | — Franklin-Clarkson Timber Co LLC | — US Bureau of Land Management | |
| — Completed Hand Line | — Escape Route | | — Fruit Growers Supply Co Inc | — US Forest Service | |



9/26/2023 2029
North American 1983 Datum, Lat/Long Grid
0 1 2 Miles

Operations
Div T