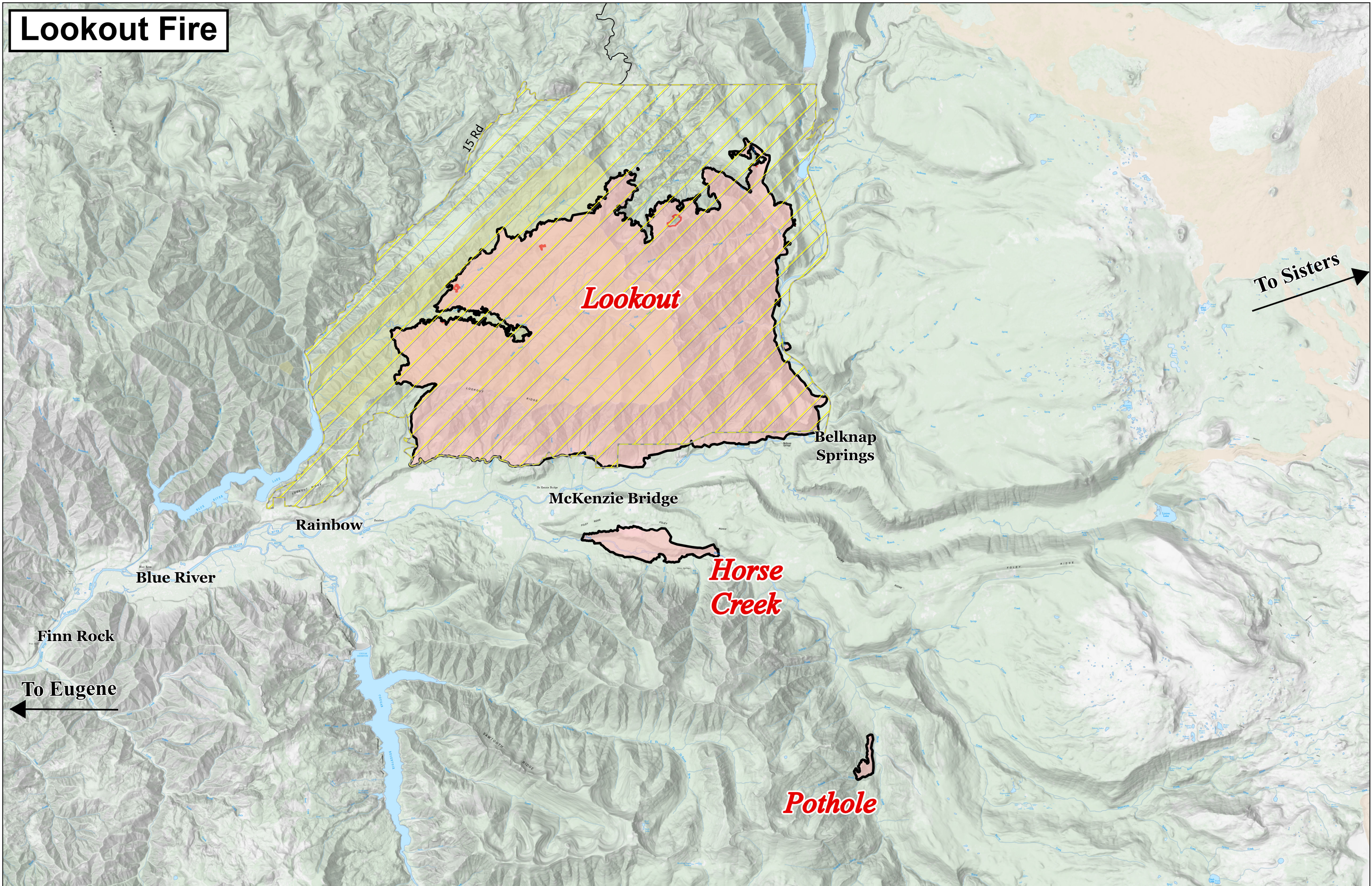

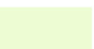

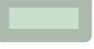





Lookout Fire



Information

Lookout
ORWIF-230327
10/15/2023
25,754 acres at 10/04/2023 @ 1940
Acres from IR & GPS

- | | |
|--|---|
|  Closure - Area |  Wild and Scenic River |
|  Contained |  Wilderness |
|  Uncontained |  H J Andrews Experimental Forest |
|  Fire Area | |

