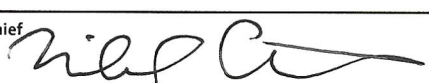
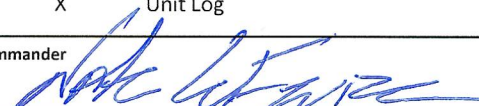


INCIDENT OBJECTIVES	1. Incident Name Morgan	2. Date Prepared 09/26/23	3. Time 1600		
4. Operational Period Day Operations: 0700-1900					
<p>Strategic Framework:</p> <p>The Morgan Fire is utilizing full suppression strategies and tactics that provide the highest likelihood of success while mitigating risks to responders. Values at risk include human safety, industrial timber lands, active timber sales of federal lands, range allotments, private property, and recreational resources.</p> <p>Management Objectives:</p> <ul style="list-style-type: none"> • Ensure the safety and well-being of emergency responders and the public by making timely risk-informed decisions that align with values at risk. • Protection of private timber lands, private property, range allotments, and recreational resources. • Foster good relationships with local cooperators, industrial timber land and range allotment stakeholders, and the public by providing coordinated, accurate and timely information. • Treat each other with dignity and respect and act in a professional manner on the fire and in the community. • Manage cost commensurate with values at risk by coordinating with the Agency Administrators and Incident Business Advisor. <p>Control Objectives:</p> <ul style="list-style-type: none"> • Defend successful direct suppression line to protect structures, private land, and active logging to the north. • Keep fire contained to the roadless area to protect industrial timber, active logging operations and private land to the south. • Implement a full suppression strategy that minimizes acres burned utilizing direct attack when feasible to do so. 					
6. Weather Forecast for Period					
7. General Safety Message					
8. Attachments (mark if attached)					
X	Organization List - ICS 203	X	Medical 206WF - 8 Line	X	Finance Message
X	Div. Assignment Lists - ICS 204	X	Safety Message	X	Dutch Creek Protocol
X	Communications Plan - ICS 205		LCES – ICS 215A	X	Phone List
X	Medical Plan - ICS 206	X	Weather Forecast	X	Incident Map(s)
X	Air Operation Summary - ICS 220		Fire Behavior	X	Unit Log
Prepared by Planning Section Chief Michael Charter, PSC2 			Approved by Incident Commander Nate LeFevre, ICT2 		

ORGANIZATION ASSIGNMENT LIST	
1. Incident Name MORGAN	
2. Date Prepared September 26, 2023	3. Time Prepared 1800
4. Operational Period September 27, 2023 0700 – 1900	
5. Incident Commander and Staff	
Position	Name
Incident Commander	Nate LeFevre
Deputy	Eric Knerr
Safety Officer	Eric Brown / Russ Long (T)
Information Officer	Jeanne Klein/Don Ferguson/Lilly Mayea (T)
Liaison	Greg Brody / Mark Suba (T)
Health Liaison	Rhonda Marchand (T)
6. Agency Representatives	
Agency	Name
USFS	Judd Lehman (AA) / Jeannette Wilson (T)
ODF	Teresa Williams (AA) / Matt Flock (DAA)
USFS READ	Lori Crumley/Willow Blanks
7. Planning Section	
Plans Section Chief	Michael Charter
Strategic Op Planner	Greg Funderburk
Resource Unit	Cari Richardson / Gary Duranceau (T)
Status Check-in	Katelyn Roeder
Situation Unit	Rob Thurston (T)
Documentation	Chris Oelschlager
GIS Specialists	Aleksandar Dozic / Olivia Hughes (T)
Incident Meteorologist	Shane Eagan
8. Logistics Section	
Logistics Section Chief	Franklin Vaughan
Deputy	Ben Goodin (T)
Facilities	Dave LeFevre
Base Camp Manager	Bill Bryant / Marlin Pose (T)
Supply Unit	Vicki Cunningham / Michael Hanson (T)
IT Specialist	Michael Gascon / Chad Funnemark
Receiving Distribution	Spencer Johnson / Phil Darby
Ordering Manager	Daniel Tanner (T)
Ground Support Unit	Joe Keady
Communication Unit	Dennis Brigante / Karson Watson (T)
Communication Tech.	Kevin Judd / Michael Merrick / Andrew Sawyer
Food Unit	Kristy Naughton
Security Manager	Ron Taylor (T)
Medical Unit	Bill Howell / Kevin Smith (T)

9. Operations Section	
OPS – Lead	Seth Merritt (T)
OPS – Field	Chris Orr
Planning Division	Scott Coulson
Division A	Linda Gibson
Division M	Travis Baker / Alex Hickey (T)
Division Z	Rob Gubser / James Fields (T)
b. Air Operations Branch	
AOB Director	Mark Hocken
Air Attack Supervisor	
Air Support Group Supervisor	
Heli base Manager	
10. Finance Section	
Finance Section Chief	Patty Westgate / Lori Bailey (T)
Time Unit	Beverly Hollars / Heather Wall
Procurement	Audrey Mainwaring
Cost Unit	Mike Lysne/Dede Domingos
Prepared by Cari Richardson	



INCIDENT Weather Forecast



Forecast No: 4
Prediction For: Wednesday
Shift Date: September 27, 2023
Forecast Issued: September 26, 2023 at 2000

Name of Incident: Morgan Fire
Unit: Fremont-Winema NF
Incident Meteorologist: Shane Eagan

Discussion: Breezy winds on exposed upper slopes and ridges to start the day. Winds will slowly taper off by late morning into the afternoon. Light, diurnal winds overnight into Thursday. Any lingering light precipitation will quickly taper off by mid-to-late morning. Colder overnight tonight with freezing temperatures increasingly likely.

Forecast for Today:

Sky/Weather: Showers diminish after 1000-1100. Becoming mostly clear by late afternoon/evening.

	<u>ICP 4,800'</u>		<u>South Flat 5,200'</u>		<u>High Elevation 6,000'</u>	
Max Temperature:	60-64		57-61		51-56 °F	
Min RH:	35-40		35-40		36-42 %	
Wind (20 FT):	Gusty winds on ridges/exposed areas; peaking 0400-1000 then diminishing through the day.					
...	W	10	WNW	10	WNW	12 mph
...	Gusts:	18	Gusts:	20	Gusts:	22 mph
Mixing Height:	5,500		5,000		5,000 ft AGL	
Haines Index:	3		3		3	
LAL:	1		1		1	
Chance of Precipitation:	15 (early)		15 (early)		15 (early) %	
Tonight's Min Temperature:	25-30		26-30		27-32 °F	
Tonight's Max RH:	94-99		92-98		92-98 %	
Tonight's Wind (20 FT):	Diurnal winds; moderate inversion develops overnight.					
...	NNE	5	Vrb	3	NNE	5 mph
...	Gusts:	10	Gusts:	7	Gusts:	12 mph
Tonight's Mixing Height:	250		200		300 ft AGL	
Tonight's LAL:	1		1		1	
Tonight's Chnc of Precip:	0		0		0 %	

Forecast for Thursday:

Sky/Weather: Mostly sunny and dry.

	<u>ICP 4,800'</u>		<u>South Flat 5,200'</u>		<u>High Elevation 6,000'</u>	
Max / Min Temperature:	64	29	61	30	56	30 °F
Min / Max RH:	25	90	26	80	28	80 %
Wind (20 FT):	WNW winds on ridges; diurnal/light & variable winds sheltered areas & valleys.					
...	W	8	W	8	WNW	7 mph
...	Gusts:	15	Gusts:	15	Gusts:	15 mph
Mixing Height:	5,500		5,500		5,500 ft AGL	
Haines Index:	3		LAL:	1	Precip Chance:	0

Extended Outlook:

Generally dry through Thursday with good to excellent overnight RH recoveries (75%+). Winds lighter and more typical, lots of terrain/diurnal influences through Friday. Increased chances for precip Friday into the weekend; cold overnight.

		<u>Max T</u>	<u>Min T</u>	<u>Min RH</u>	<u>Max RH</u>	<u>Ridge Winds @ 1500</u>	<u>Weather</u>
South Flat 5,200'	Fri:	55	25	46	100	W @ 9 G15	Mostly cloudy; precip
	Sat:	48	23	63	100	N @ 14 G25	Mostly cloudy, cold, precip
	Sun:	48	25	68	100	N @ 10 G18	Mostly cloudy; precip



Please send observations (with location and elevation) to 312-804-2926



DIVISION ASSIGNMENT LIST		1. Branch	2. Division / Group A		Page 1 of 2		
3. Incident Name Morgan		4. Operational Period Date: September 27, 2023 Time: 0700-1900					
5. Operations Personnel							
Operations Chief	Chris Orr/Seth Merritt (T)		Division / Group Supervisor	Linda Gibson			
Operations Chief (Plans)	Scott Coulson (T)		Branch Director				
Safety Officer	Eric Brown/Russ Long (T)		Air Attack Supervisor				
6. Resources Assigned this Period							
	Strike Team / Task Force / Resource Designator	Leader	Number Persons	Trans. Needed	Notes	Tentative Last Work Day	
1.	O- TFLD	Tim Troxel	1			10/02	
2.	O- TFLD (T)	Lukas Schlemme	1			10/02	
3.							
4.	O-16 HEQB	Thomas Reynolds	1			10/04	
5.	O-18 HEQB (T)	David Cavanaugh	1			10/04	
6.							
7.	C-1 CRW2I Patrick Environmental	Josh Chiles	20			10/03	
8.							
9.	O-82 FMOD 4Q Timber	Gregory Gregory	2			10/05	
10.							
11.	E-62 ENG4 OR-WIF	John Caroon	4			10/04	
12.	E-11 ENG6 Pacific Oasis	William Dietz	3			10/03	
13.	E-27 ENG6 Inbound, LLC	Brandon Haro	3			10/04	
14.	E-63 ENG6 Chemult RD	Dakota Toombs	3			10/05	
15.							
16.	E-15 WTS2 Cool Runnings	Michael Klein	1			10/02	
17.							
18.	E-2 DZR2 JB Logging	John Benson	2			10/03	
19.							
20.	E-10032 LOGL TA Lawson	Lawson	1			10/09	
21.							
22.							
23.							
7. Control Operations Mop up and secure fire line. Identify and mitigate hazard trees. Identify and begin repair.							
8. Special Instructions							
9. Division / Group Communication Summary							
Function	Frequency	System	Channel	Function	Frequency	System	Channel
Command Repeater	See Comm Plan			Command	See Comm. Plan		
TAC				Air To Ground	See Comm. Plan		
Prepared by (Resource Unit Leader): Gary Duranceau			Approved by (Planning Section Chief): Michael Charter, PSC2		Date: 09/26/23	Time: 1900	

DIVISION ASSIGNMENT LIST		1. Branch	2. Division / Group A		Page 2 of 2		
3. Incident Name Morgan		4. Operational Period Date: September 27, 2023 Time: 0700 - 1900					
5. Operations Personnel							
Operations Chief	Chris Orr/Seth Merritt (T)		Division / Group Supervisor	Linda Gibson			
Operations Chief (Plans)	Scott Coulson (T)		Branch Director				
Safety Officer	Eric Brown/Russ Long (T)		Air Attack Supervisor				
6. Resources Assigned this Period							
	Strike Team / Task Force / Resource Designator	Leader	Number Persons	Trans. Needed	Notes	Tentative Last Work Day	
24.	E-53 AMB 53 ALS - AMBO 53	Carino	2			10/07	
25.	O-24 EMTF - EMT 4	Beasley	1			10/03	
26.	O-61 EMPF - Medic 6	Dellaquila	1			10/04	
27.							
28.							
29.							
30.	TBD:						
31.	(1) SKDR						
32.							
33.							
34.							
35.							
36.							
37.							
38.							
39.							
40.							
41.							
42.							
43.							
44.							
45.							
46.							
7. Control Operations Mop up and secure fire line. Identify and mitigate hazard trees. Identify and begin repair.							
8. Special Instructions							
9. Division / Group Communication Summary							
Function	Frequency	System	Channel	Function	Frequency	System	Channel
Command Repeater	See Comm Plan			Command	See Comm. Plan		
TAC				Air To Ground	See Comm. Plan		
Prepared by (Resource Unit Leader): Gary Duranceau			Approved by (Planning Section Chief) Michael Charter, PSC2		Date 09/26/23	Time 1900	

DIVISION ASSIGNMENT LIST				1. Branch		2. Division / Group M		Page 1 of 2		
3. Incident Name Morgan				4. Operational Period Date: September 27, 2023 Time: 0700 - 1900						
5. Operations Personnel										
Operations Chief		Chris Orr/Seth Merritt (T)			Division / Group Supervisor		Travis Baker / Alex Hickey (T)			
Operations Chief (Plans)		Scott Coulson (T)			Branch Director					
Safety Officer		Eric Brown/Russ Long (T)			Air Attack Supervisor					
6. Resources Assigned this Period										
	Strike Team / Task Force / Resource Designator				Leader		Number Persons	Trans. Needed	Notes	Tentative Last Work Day
1.	O-116 TFLD				Charlie Fabris		1			10/09
2.	O-67 TFLD (T)				Adam Brooks		1			10/05
3.										
4.	O-15 HEQB				Eric Metzger		1			10/03
5.										
6.	C-2 CRW1 Prineville IHC				Brendan O'Reilly		23			09/29
7.	C-7 CRW1 Navajo IHC				Vann Smith		19			09/27
8.	C-8 CRW1 Pioneer Peak IHC				Kristofer Baumgartner		23			10/02
9.	C-4 CRW2 TJ Forestry				Antonio Rodarte Cruz		20			10/03
10.	C-5 CRW2 TJ Forestry				Oscar Lopez		20			10/03
11.	C-10001 CRW2 Alpine Services				Ivan Ramirez Arellano		20			10/06
12.	C- Mod Bly				Jacob Pittleman		6			10/04
13.										
14.	O-80 FMOD Firefallers, INC				Jim Erickson		2			09/28
15.										
16.	E-28 ENG4 OR-PRD-5420				Zach Spencer		3			10/03
17.										
18.	E-81 WTS2 EP McDonald Equipment				Evert McDonald		1			10/05
19.	E-82 WTS2 JB Logging				Mike Clarke		1			10/05
20.										
21.	E-76 SKGS Grayback Forestry, INC				Lance Wolters		3			10/07
22.	E-77 SKGS James E Woodward, INC				Joel Brown		2			10/07
23.										
7. Control Operations Mop-up, secure fire line, patrol spots, and mitigate hazard trees. Identify and begin repair.										
8. Special Instructions										
9. Division / Group Communication Summary										
Function	Frequency	System	Channel	Function	Frequency	System	Channel			
Command Repeater	See Comm Plan			Command	See Comm. Plan					
TAC				Air To Ground	See Comm. Plan					
Prepared by (Resource Unit Leader): Gary Duranceau				Approved by (Planning Section Chief): Michael Charter, PSC2			Date: 09/26/23	Time: 1900		

DIVISION ASSIGNMENT LIST			1. Branch		2. Division / Group M			Page 2 of 2	
3. Incident Name Morgan			4. Operational Period Date: September 27, 2023 Time: 0700 - 1900						
5. Operations Personnel									
Operations Chief		Chris Orr/Seth Merritt (T)			Division / Group Supervisor		Travis Baker / Alex Hickey (T)		
Operations Chief (Plans)		Scott Coulson (T)			Branch Director				
Safety Officer		Eric Brown/Russ Long (T)			Air Attack Supervisor				
6. Resources Assigned this Period									
	Strike Team / Task Force / Resource Designator			Leader		Number Persons	Trans. Needed	Notes	Tentative Last Work Day
24.	O-21 Fireline EMS REMS – REMS 1			Derek Haver		4			10/04
25.	O-25 EMTF – EMT 5			Garrett		1			10/03
26.	O-62 EMPF – Medic 7			Neel		1			10/05
27.	O-76 EMPF – Medic 9			Welander		1			10/05
28.									
29.	O-30.33 SOFR			Leo Engleson		1			10/04
30.									
31.									
32.									
33.	TBD:								
34.	(1) TFLD								
35.	(1) EXC2								
36.									
37.									
38.									
39.									
40.									
41.									
42.									
43.									
44.									
7. Control Operations Mop-up, secure fire line, patrol spots, and mitigate hazard trees. Identify and begin repair.									
8. Special Instructions									
9. Division / Group Communication Summary									
Function	Frequency	System	Channel	Function	Frequency	System	Channel		
Command Repeater	See Comm Plan			Command	See Comm. Plan				
TAC				Air To Ground	See Comm. Plan				
Prepared by (Resource Unit Leader): Gary Duranceau			Approved by (Planning Section Chief) Michael Charter, PSC2			Date 09/26/23	Time 1900		

DIVISION ASSIGNMENT LIST		1. Branch	2. Division / Group Z		Page 1		
3. Incident Name Morgan		4. Operational Period Date: September 27, 2023 Time: 0700-1900					
5. Operations Personnel							
Operations Chief	Chris Orr/Seth Merritt (T)		Division / Group Supervisor	Rob Gubser/James Fields (T)			
Operations Chief (Plans)	Scott Coulson (T)		Branch Director				
Safety Officer	Eric Brown/Russ Long (T)		Air Attack Supervisor				
6. Resources Assigned this Period							
	Strike Team / Task Force / Resource Designator	Leader	Number Persons	Trans. Needed	Notes	Tentative Last Work Day	
1.	O-10 TFLD (T)	Tyler Shipley	1			10/02	
2.							
3.	O-60 HEQB	George Karioris	1			10/05	
4.							
5.	C-3 CRW2 Willamette	Lazaro Montano	20			10/03	
6.							
7.	ENG4 OR-FWS Paisley 633				Local Loan		
8.	E-14 ENG6 ODF Klamath E8151	Roseann Rose	2			10/02	
9.							
10.	E-10 WTS2 Two Crows	Shaeli Osborn	1			10/08	
11.							
12.	E-18 DZR2 JB Logging	Steven Parish	2			10/02	
13.							
14.	E-20 AMB BLS Aegis Logistics – AMBO 20	Patrick Miller	2			10/04	
15.	O-23 EMTF – EMT 3	Damon Clarke	1			10/03	
16.	O-63 EMPF – Medic 8	Rich Dobson	1			10/04	
17.							
18.	O-30.34 SOF2	George Libercajt	1			10/05	
19.							
20.							
21.							
22.	TBD:						
23.	(1) EXC2						
24.							
7. Control Operations Mop-up, secure fire line, patrol spots, and mitigate hazard trees. Identify and begin repair.							
8. Special Instructions							
9. Division / Group Communication Summary							
Function	Frequency	System	Channel	Function	Frequency	System	Channel
Command Repeater	See Comm Plan			Command	See Comm. Plan		
TAC				Air To Ground	See Comm. Plan		
Prepared by (Resource Unit Leader): Gary Duranceau			Approved by (Planning Section Chief) Michael Charter, PSC2			Date 09/26/23	Time 1900

AIR OPERATIONS SUMMARY

Prepared By: Mark Hocken

Prepared Date:
09/26/23

Prepared Time: 1700

1. INCIDENT NAME: Morgan	2. OPS PERIOD DATE: 09/27/23	START TIME: 0800	END TIME: 1900	Sunset Klamath: 1856	Sunset Lakeview: 1850
3. REMARKS (Safety Notes, Hazards, and Air Operations Special Equipment, etc.): WATCH FOR STRONG WINDS TODAY and DUST STORMS, SMOKE AND LOW-LEVEL CLOUD COVER. COLD CONDITIONS, SMOKE, POTENTIAL HIGH WINDS, TURBULENCE. FOLLOW WIND LIMITATION PROTOCOLS WHEN CONDUCTING AIR OPERATIONS. Please Send all Aircraft costs to 2023.morgan.helibase@gmail.com Please send signed CTRs to 2023.morgan.finance@firenet.gov					
4. READY ALERT AIRCRAFT MEDEVAC: Short Haul 350HQ in Klamath Falls Contact Helibase Also available Short Hauls from neighboring incidents – contact Lakeview dispatch.			5. TFR #: Morgan TFR 3/3895 120.600 Active 24 hrs a day		

6. PERSONNEL		NAME	PHONE #	7. FREQUENCIES		AM	FM	8. FIXED-WING- Type/ Make-Model/ N#/ Base	
AOBD		Mark Hocken	541-261-1085	Morgan A/G Primary			166.6125	AIRTANKERS --- Order through LIFC	
UAO		Eric Wolf	541-912-7439	Morgan A/G Secondary			169.1500	LEAD PLANES -- Order through LIFC	
KFalls ATB		Wyatt Hefley	541-883-6853	Morgan A/A Primary	120.600			AERIAL SUPERVISION N93ME, Order through LIFC	
Lakeview SEAT		Art Griffiths	541-219-0779	Morgan A/A Secondary	118.400			SEATS- T-806, T-893 – Order through LIFC	
Fixed Wing ATGS		Chad Bergren Or POOL	541-219-2594					Water Tender E-19, Share with Camp	
HEBM		Simon Driskell	541-728-8724					Helibase com trailer E-29	
ABRO		Jon Raybourn	541-816-2453					UR 33 contact Joe Don Morton 907-388-1050	
Short Haul mgr		Mitch Dana	406-239-4661						

9. HELICOPTERS										
FAA N#	TY	MAKE/ MODEL	BASE	START	AVAIL	REMARKS	FAA N#	TY	MAKE/ MODEL	REMARKS
N47CH	1	CH-47D	LMT	0800	0830	Buckets Klamath Falls				
N679H	2	Bell 205	LKV	0800	0830	IA/RAP/Crew/ Bucket	350HQ	3	AS 350B3	LMT 0800
										Recon, bucket SHORT HAUL

10. TASK/ MISSION/ ASSIGNMENT (Type/ function includes: Air Tactical, Retardant, Recon, Personnel Transport, Bucket Operations, SAR, etc.)				
TYPE/FUNCTION	NAME OF PERSONNEL OR CARGO (if applicable) or instructions for tactical aircraft	MISSION START	FLY FROM	FLY TO
Recon	As Requested	As Requested	Any Location	Fire
Bucket Support / Supply Missions	As Requested	As Requested	Any Location	Fire
Troop Transport	As Requested	As Requested	Any Location	Fire
Aerial Supervision	Provide coverage as needed	As Requested	Klamath Falls	Fire

SHORT-HAUL OPERATIONS

CAPABILITIES

- During an operational Short-Haul the helicopter is capable of inserting Short-Haulers into an area with tight canopy cover and/or technical terrain.
- Haul line lengths range from 100 feet to 350 feet.
- Short hauler and/or medical gear can be delivered to the medical scene even if extraction by short-haul is not necessary.

ORDERING

- EMT or Medical Incident IC determines medical extraction is required.
- Follow local established procedures and/or Medical Incident Report (MIR) in the IRPG.
- Confirm aircraft type, call sign, estimated time of arrival and frequency.
- Give site selection information when ordering: hazards (i.e. ash, smoke, snags, aerial), tree height, terrain, and patient transport configuration (supine or seated position). Repeat hazards and give updated weather conditions as well as brief patient update to responding helicopter.

PROCESS: The helicopter will fly to the coordinates provided. They will make contact with ground personnel on scene with the patient using an identified air-to-ground frequency. The helicopter will complete a short-haul recon and size up, gather patient update information and then fly to a landing zone (LZ) to configure for short-haul operations. The helicopter will be monitoring the appropriate air-to-ground, air guard and victor frequencies. From this point, ground resources should only contact the helicopter in case of an emergency. During the insertion and extraction process ground personnel must be clear of the area.

ON SCENE – EXPECT THE FOLLOWING

- 1 or 2 rescuers (at least one qualified as an EMT or higher)
- Backboard (if needed and not already on scene)
- All equipment necessary for patient extraction

The Patient Extraction Bag accommodates most backboards.

- A patient on a backboard, TRS, SKED or litter will be inserted into the



The Seat Harness is used for patients not requiring the use of a backboard.



INCIDENT RADIO COMMUNICATIONS PLAN I-205				1. INCIDENT NAME		2. DATE/TIME PREPARED		3. OPERATIONAL PERIOD DATE/TIME						
				MORGAN		9/26/2023 16:00:00 PM		9/27/23 0600-2200						
4. BASIC RADIO CHANNEL UTILIZATION														
Ch #	Function	Channel Name	Assignment	RX Freq	NW	RX Tone/NAC	TX Freq	NW	TX Tone/NAC	Mode Analog (A) Digital (D) Mixed (M)	Remarks			
1	TAC	TAC 1	DIV A	168.0500	N	123.0	168.0500	N	123.0	A				
2	TAC	TAC 2	DIV M	168.6000	N	123.0	168.6000	N	123.0	A				
3	TAC	TAC 3	DIVZ	166.7250	N	123.0	166.7250	N	123.0	A				
4	TAC	TAC 4	UNASSIGNED	166.7750	N	123.0	166.7750	N	123.0	A				
5	TAC	TAC 5	UNASSIGNED	168.2500	N	123.0	168.2500	N	123.0	A				
6	COMMAND	CMD 6	ALL DIVS	170.4500	N	123.0	168.1000	N	123.0	A	Located on Cougar Peak			
7	COMMAND	CMD 7	ALL DIVS	169.5375	N	123.0	164.7125	N	123.0	A	Located on Round Mountain			
8	IA TAC	IA TAC 1	INITIAL ATTACK	167.6250	N		167.6250	N		A	FWF IA TAC			
9	IA TAC	IA TAC 2	INITIAL ATTACK	167.4500	N		167.4500	N		A	FWF IA TAC			
10	IA TAC	IA TAC 3	INITIAL ATTACK	166.2750	N		166.2750	N		A	FWF IA TAC			
11	COMMAND	GRIZZLY	FOREST CONTACT	169.9250	N	103.5	163.3750	N	151.4	A	FWF GRIZZLY RPTR			
12	COMMAND	ROND PAS	FOREST CONTACT	170.1250	N	103.5	163.0000	N	141.3	A	FWF ROUND PASS RPTR			
13	A/G	A/G PRI	ALL DIVS	166.6125	N		166.6125	N		A				
14	A/G	A/G SEC	ALL DIVS	169.1500	N		169.1500	N		A				
15	MEDEVAC A/G	VMED29	LIFE FLIGHT CONTACT	155.3475	N	156.7	155.3475	N	156.7	A	MEDEVAC			
16	AIRGUARD	AIRGUARD	ALL DIVS	168.6250	N		168.6250	N	110.9	A				
5. Special Instructions:														
6. I-205 Prepared By: Communications Unit Leader					Name: Mike Merrick COML (t)					Signature: <i>Mike Merrick</i>				

Morgan Fire Safety Message

Phases of Transition

It can be helpful to recognize that both the firefighter and the family are going through a period of change. You can expect to go through several changes while transitioning.

Reunion is the immediate meeting, including a few days after arrival home. This is a time of relearning. Things to expect in this phase are:

- Feeling excited
- Needing time and space
- Sharing pride in accomplishments
- Feeling tired and ready to relax

Disruption is the phase when problems can crop up. Things to expect in this phase are:

- Having control issues
- Having differences in decision making
- Experiencing conflicting routines
- Sharing hard-times stories
- Resurfacing of unresolved problems
- Experiencing a lack of trust

Communication is the phase of renegotiating new routines, redefining roles, and accepting changes to decision-making habits. Things to expect in this phase are:

- Acceptance
- Renegotiating
- Increased trust
- Reconnecting

Normal is the phase when the routines normalize with family and friends. Things to expect in this phase are:

- Establishing routines and roles
- Accepting change
- Personal growth

DEMOB AND TRANSITIONING HOME

Reuniting with family and friends can be challenging. You might be excited to see your friends and family while also feeling let down from leaving your team behind. Before reengaging in relationships after an assignment, consider these practices:

- Reintegrate slowly. Try to fit into the family routine that has been working in your absence.
- Expect changes in your spouse/partner, children, and loved ones.
- Avoid making important, permanent decisions upon your immediate return.
- Spend maximum time with family to allow for time to establish normal routines.
- Know children adjust in different ways. Go slowly, and let children set the pace in accepting the parent home.



Human Resources Message



Five C's of Effective Leadership

1) Credibility

You can build credibility by demonstrating the knowledge and experience required to lead successfully, as well as having a trustworthy personality. The more honest and transparent your approach, the more those around you will buy into your ideals, motivations and actions – encouraging greater team-working and morale.

2) Communication

Being a good leader requires excellent communication skills, this means possessing the ability to listen to people as well as the ability to share ideas. These skills also relate to the capacity to negotiate when necessary and manage issues of conflict.

Effective leaders work hard to build rapport and trust between the people they work with. Learn to balance your time to allow for frequent communication with colleagues and co-workers, and use all platforms at your disposal to enhance your communication skills at every stage of your career.

3) Commitment

Demonstrating commitment to the cause or organization you are working for will create goodwill and overall positive outcomes. Showing commitment to those around you also contributes to good relationships and, in turn, can inspire similar commitment at every level of the organization.

Commitment is among the most difficult “C’s” to embody as a leader. It relies on a principled, resolute approach, wherein all avenues have been explored and all ideas investigated. It also requires a good degree of self-confidence, and a belief that your approach is best for the outcome of the wider business or project.

4) Confidence

To be an effective leader, you will need to display confidence. You can demonstrate this trait through both the way you conduct yourself and your actions. It’s important to be aware that being confident does not mean being brash and pushy. Rather, you can display it through more subtle actions, like being decisive and having faith in your abilities.

Generally, building confidence comes with experience. Whether it’s communicating with others as part of a collaborative project, building your skills while studying towards a distance learning qualification or starting your first job; developing confidence is a matter of time, effort and doing.

5) Creativity

The best leaders are often those who can think in a creative, innovative way. If you find it hard to look at situations from different perspectives, you will find it more of a challenge to lead since leaders need to be able to look at the big picture. Being creative will also help when it comes to problem-solving and making decisions.

Cultivating this ‘C’ can be tricky, and some people are naturally more creative than others. But with self-confidence and experience, you can learn to open up and look at situations from new perspectives, which is essential to building creativity in and out of the workplace.

FINANCE MESSAGE

September 27, 2023

- Please Turn in your time often (daily preferred)
- We are requesting all documentation be sent to us electronically
- Please submit PDF documents (if you give us photos, we have to convert them to PDF)

- Please use this format to label your time documents.
CTR_O99_230923-24, ST_E99_230923 Thank you!

Finance Email is: 2023.morgan.finance@firenet.gov

Finance Phone Contacts:

Procurement questions: Audrey 206-949-0137

Other Finance questions, concerns: Patty 541-892-8432 or Lori 541-589-0806

Comp/Claims: Patty 541-892-8432

Thank You!

Photos and Videos Needed

Photos and short videos (30 seconds or less) are needed to tell the story of the Morgan Fire.

Please send them to PIO staff

Via email: 2023.morgan@firenet.gov

Provide your name for credit and basic info about where the photo was taken and what's happening in it.

Your photos and videos are being posted at:

Inciweb: Morgan Fire

Facebook: - <https://www.facebook.com/nwteam7>

-<https://www.facebook.com/SCOFMPFIREINFO>

-<https://www.facebook.com/R6FWNF>

LOST & FOUND

We have lost and found! Please stop by the Info shop in ICP to find your lost goods!

Thank you!

LOGISTICS NOTES

SCHEDULE

—

FOOD

0600 - 0900 1730 - 2130

SHOWER

0600 - 1000 1400 - 2200

FUEL & MECHANIC

0630 - 2100

WEED WASH

0700 - 2000

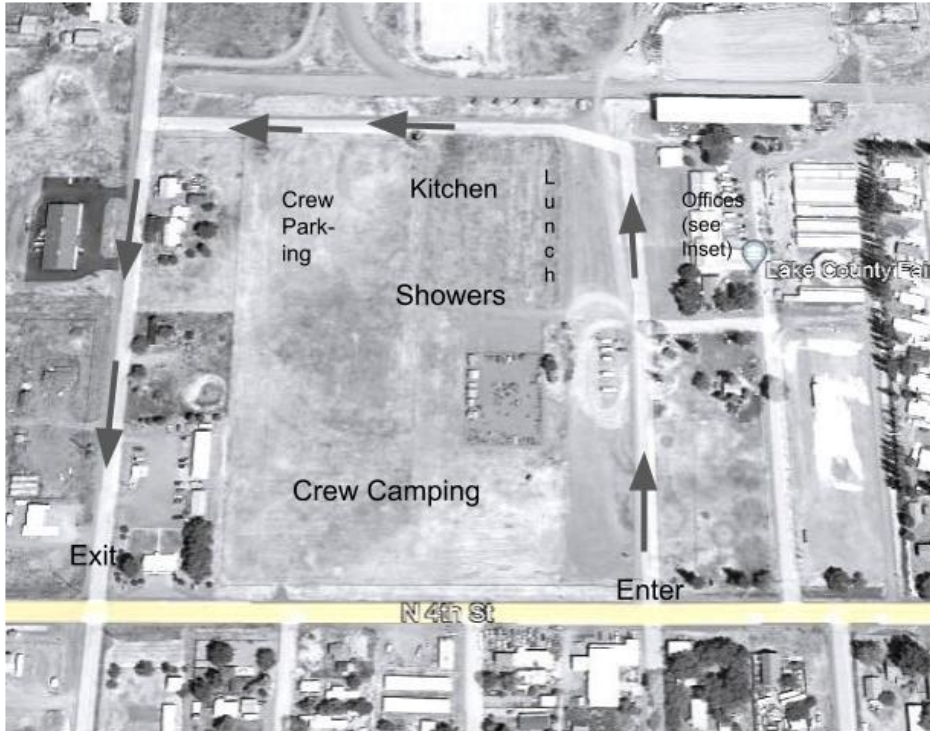
LOGISTICS UNITS

0600 - 2200

Recycling aluminum cans saves 95% of the energy needed to produce new cans from scratch. And recycling glass saves 30% of the energy needed to make new glass.



ICP Map Morgan Fire

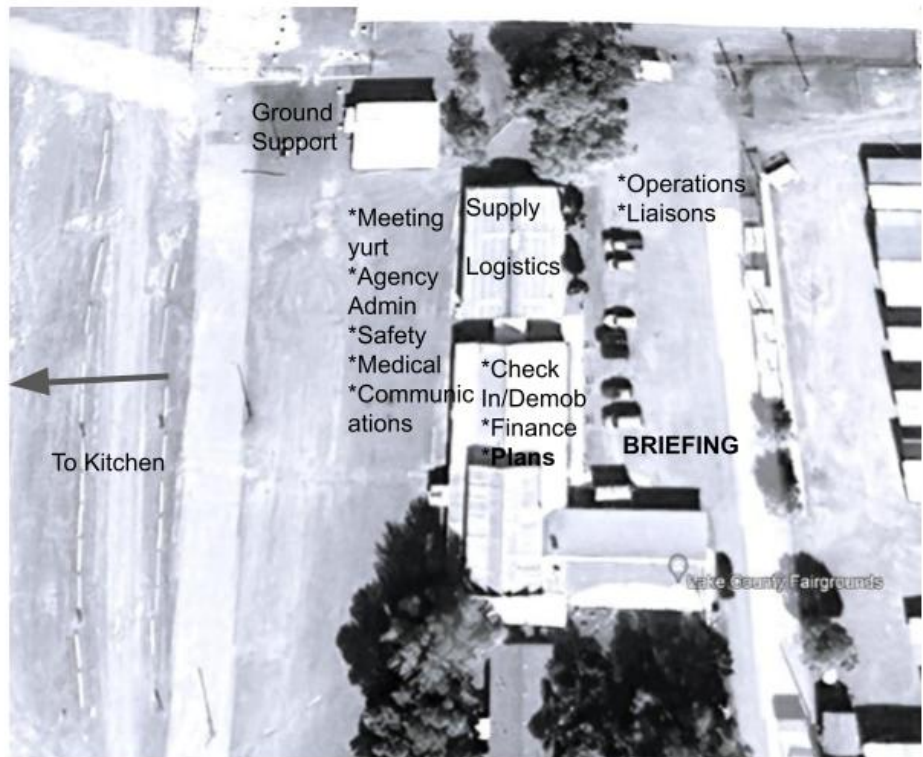


ICP Map - Main Camp

- Camping areas
- Kitchen
- Showers
- Traffic Flow

Inset - Morgan Fire ICP

Offices
Services





Team 7 Line Supply Order		Order #			
Date & Time Order Placed	Deliver To Location/time (Division, Drop Point, Heli Spot, Lat/Long)	Delivery Method (Driver, Heli, DIVS to P/U)			
Order received in Communications (name & time)		Ordered by (name and Position)			
Order received in Supply by (name & time)		Ground Contact			
Order received in Transportation by (name & time)		Contact Freq.			
Order received in Helibase by (name & time)		Special Instructions/line length/ elevation			
Order shipped to line by (name & time)					
#	Item	Amount	#	Item	Amount
1	Meals #1842 MRE 12/Cs		33	Bath in a Bag, Large # 0712	
2	Water 0048 5 gal cubies		34	Bath in a Bag, Small # 0206	
3	Gatorade 24/Cs		35	Coffee Kit #0480	
4	Batteries, AA #0030 24/pg		36	Coffee 3lb Can	
5	Batteries, AAA #7471 24/pg		37	Folda-Tank 1500 gal # 0664	
6	Gas Unleaded/5 gal		38	Pumpkin 3000 gal. # 0568	
7	2 Cycle Oil #7724 5 Gal mix		39	Backpack Pump # 0909	
8	2 Cycle Oil #3444 1 Gal. mix		40	Mark III pump + Kit # 0148	
9	Diesel (5 gal.)		41	Lightweight Pump + Kit # 8606	
10	Bar Oil #1880 Gal.		42	Volume Pump + # 1222	
11	Bar Oil # 1869, Qt		43	Hose 1 1/2" # 1239 100' lg	
12	Shovel # 0171		44	Hose 1" # 1238 100' lg	
13	Pulaski # 0146		45	Hose 3/4" # 1016 50' lg	
14	McLeod # 0296		46	Reducer 1 1/2" to 1" # 0010	
15	Combi #1180		47	Reducer 1" to 3/4" # 0733	
16	Chainsaw Kit # 0340		48	Gated "Y" 1 1/2" # 0231	
17	Drip Torch # 0241 Empty		49	Gated "Y" 1" # 0259	
18	Fusee #0105		50	Gated "Y" 3/4" # 0904	
19	Sleeping Pad # 1566		51	In-line Tee 1 1/2" to 1" # 0230	
20	Sleeping Bag # 0022		52	Nozzle KK 1 1/2" # 1082	
21	Fly Tent #0070		53	Nozzle KK 1" # 1081	
22	Plastic Sheeting # 0143		54	Nozzle 3/4" # 0136	
23	Parachute Cord # 0533		55	Nozzle, Forrester 1" # 0024	
24	Fiber Tape # 0222		56	Sprinkler kit #1048	
25	Garbage Bags # 0021		57		
26	Leadline 3000 lbs. # 0528		58		
27	Cargo Net 3000lb # 0531		59	Team 7 Hose Lay Kit	
28	Swivel 3000lb # 0526		60		
29	Slingable Bag 72 gal. Blivet # 0426		61		
30	Foam 5 gal. # 1145		62		
31	Toilet Paper # 0142		63		
32			64		

TEAM 7 HOSE LAY KIT
7/16/2014

Item	Amount
1 1/2 in. synthetic hose	1000 ft.
1 in. synthetic hose	500 ft.
3/4 in. garden hose	500 ft.
1 1/2 in. gated wye	5 ea.
1 1/2 in. - 1 in. reducers	5 ea.
1 in. combination nozzle	5 ea.
1 in. - 3/4 in. reducer	5 ea.
3/4 in. valve, shutoff, ball	5 ea.
3/4 in. Nozzle	5 ea.
3/4 in gated wyes	5 ea.

SPRINKLER KIT NFES # 1048

Item	Amount
Sprinkler head w/couplings	4 ea.
3/4 in. garden hose	250 ft.
1 1/2 x 1 1/2 x 1 in. Tee	4 ea.
1 x 3/4 reducer	4 ea.
1 1/2 in. - 1 in. reducers	1 ea.
3/4 in gated wyes	2 ea.
3/4 in. valve, shutoff, ball	4 ea.
3/4 in. Nozzle	1 ea.
3/4 pressure regulator,	4 ea.
1 in. nozzle, plastic 60 GPM	1 ea.
10 in. adjustable wrench	1 ea.

LINE ORDER PROCESS

Line orders from the field should go through the Communication Unit via radio (primary) or 24-hour phone number shown cover of the IAP. All other supply requests should be submitted, in-person, to the Supply Unit.

09/27/2023

TENTATIVE RELEASE

MORGAN US-OR-FWF-230307

CREWS

C-10000	0730	(CRW2)	CRW2 - ODF IRA - C127 ALPINE
----------------	-------------	---------------	-------------------------------------

EQUIPMENT

E-84	0730	(WTS2)	WTS2 - QUINN TRANSPORT, LLC -
E-24	0800	(ENG6)	ENG6 - OREGON WOODS INC - A45594
E-83	0800	(WTS2)	WTS2 - SHAN CREEK WILDFIRE

OVERHEAD

O-69	0800	(FMOD)	FMOD - FALLER MODULE - AXE
-------------	-------------	---------------	-----------------------------------

09/28/2023

TENTATIVE RELEASE

MORGAN US-OR-FWF-230307

CREWS

C-2	0730	(CRW1)	CRW1 - PRINEVILLE IHC
C-4	0730	(CRW2)	CRW2 - T2C261 TJ FORESTRY
C-8	0800	(CRW1)	CRW1 - PIONEER PEAK IHC
C-5	0830	(CRW2)	CRW2 - T2C432 TJ FORESTRY
C-7	0830	(CRW1)	CRW1 - NAVAJO IHC

EQUIPMENT

E-20	0830	(AMB4)	AMB4 - AEGIS LOGISTICS LLC - A42490
E-81	1900	(WTS2)	WTS2 - EVERT PAUL MCDONALD -

OVERHEAD

O-23	0800	(EMTF)	ADVENTUREMEDICSLLC,
O-24	0800	(EMTF)	FRONTLINEEMSLLC,
O-25	0800	(EMTF)	MINUTEMAN EMS - MM-EMTF-6-01
O-67	1900	(TFLD)	BROOKS, ADAM L

09/29/2023

TENTATIVE RELEASE

MORGAN US-OR-FWF-230307

CREWS

C-1	0700	(CR2I)	CR2I - PATRICK ENVIRONMENTAL, INC.
C-10001	0730	(CRW2)	CRW2 - ODF IRA - C128 ALPINE

EQUIPMENT

E-11	0700	(ENG6)	ENG6 - PACIFIC OASIS INC - A75901
E-15	0700	(WTS2)	WTS2 - COOL RUNNINGS LLC - 182403
E-27	0700	(ENG6)	ENG6 - INBOUND, LLC - A46724
E-2	0730	(DZR2)	DZR2 - J B LOGGING - 417833
E-82	0730	(WTS2)	WTS2 - J B LOGGING - 755112
E-14	0800	(ENG6)	ENG6 - ODF KLAMATH - E8151
E-77	0800	(SKGS)	SKGS - JAMES E WOODWARD INC -

OVERHEAD

O-15	0730	(HEQB)	METZGER, ERIC
O-60	0800	(HEQB)	KARIORIS, GEORGE
O-10	0800	(TFLD)	SHIPLEY, TYLER
O-80	0830	(FMOD)	FMOD - FALLER MODULE -
O-78	0900	(MEDL)	SEITZ, LORI M



Need Air Travel to get Home?

**CONTACT DMOB AT LEAST 48-HOURS BEFORE
DEMOB DAY**

Katelyn, DMOB

Phone: 661-349-1520

email: katelyn_roeder@firenet.gov

Information needed:

Name EXACTLY as it appears on your identification

Gender

Date of birth

Departure & destination airports

City for rental car return

Email and phone number

Morgan Fire C & G Contact List



Incident Commander	LeFevre	Nathan	nlefevre@blm.gov	541-255-6595
Deputy Incident Commander	Knerr	Eric	hardinknerr@gmail.com	541-219-6579
Safety Officer	Brown	Eric	ericbbrown0523@gmail.com	928-699-3477
Liaison Officer	Brody	Greg	greg_brody@firenet.gov	503-482-8071
Liaison Officer (T)	Suba	Mark	mark_suba@firenet.gov	541-219-9048
Public Information Officer	Klein	Jeanne	jklein@blm.gov	541-499-2862
Finance Section Chief	Patricia	Westgate	pattywestgate@gmail.com	541-892-8432
Finance Section Chief (T)	Bailey	Lori	lori.bailey@usda.gov	541-589-0806
Operations Section Chief	Orr	Christopher	christopher_orr@nps.gov	530-640-1464
Operations Section Chief (T)	Merritt	Seth	smerritt@esf-r.org	425-501-7384
Operations - Planning Division	Coulson	Scott	scoulson@snofire26.org	425-770-1910
Logistics Section Chief	Vaughan	Franklin	vaughan711@gmail.com	859-619-7244
Logistics Section Chief (T)	Goodin	Benjamin	benjamin.goodin@usda.gov	541-589-2941
Planning Section Chief	Charter	Michael	mcharter270@gmail.com	509-879-4910
Planning Section Chief (Deputy)	Funderburk	Greg	greg_funderburk@nps.gov	808-936-4873



MORGAN FIRE DUTCH CREEK PROTOCOL

UPDATED 09/24/2023

LEADER’S INTENT: To establish **approximate** travel times from key areas of the fire to ICP/MEDICAL UNIT and Lake District Hospital in Lakeview. See Medical Plan (ICS-206) for travel times via air. **STUDY YOUR MAP, KNOW WHERE YOU ARE WORKING, AND KNOW WHERE YOUR MEDICAL HELP IS. SITUATIONAL AWARENESS IS YOUR JOB.**

Ground Transport Only	ICP MED UNIT	Lake District Hospital (Level 4)
ICP	XXX	5 minutes
DP80	36 minutes	41 minutes
DP90	44 minutes	49 minutes
DP95	46 minutes	51 minutes
DP30	56 minutes	61 minutes
DP20	61 minutes	66 minutes
DP11	66 minutes	71 minutes
DP10	70 minutes	75 minutes
Z-M to DP90	21 min hike 12 min UTV 9 min Truck	
H7 to dozerline	30 min hike	
DP10 to DP60	20 min hike	
DP60 to H9	25 min hike	

Medical Plan ICS-206

Incident/Project Name	Operational Period
Morgan Fire	09-27-2023 0700 to 09-28-2023 0700

Ambulance Services

Name	Complete Address	Phone	Advanced Life Support	
			Yes	No
Lake Health District Emergency Medical Services	700 South J Street Lakeview, OR 97630	911	X	

Air Ambulance Services

Name	Phone	Type of Aircraft & Capability
Air Link	911	Rotor and Fixed Wing
Mercy	911	Rotor and Fixed Wing
Lifeflight	911	Rotor and Fixed Wing

Hospitals

Name/ Address	GPS Datum – WGS 84	Travel Time From ICP		Phone	Helipad		Level
		Air	Gnd		Yes	No	
Lake District Hospital 700 S J St. Lakeview, Oregon	Lat: N 42 10.88' Long: W 120 21.11'	n/a	5	541-947-2114	X		IV
Asante Rogue Regional Medical Center 2825 E Barnett Rd Medford, Oregon	Lat: N 42 19.074' Long: W 122 49.902'	45	180	541-882-6311	X		II
Saint Charles Medical Center 2500 NE Neff Rd Bend, Oregon	Lat: N 44 4.02' Long: W 121 16.14'	60	180	541-382-4321	X		II
Legacy Emanuel Medical Center 2801 N Gantenbein Ave Portland, Oregon	Lat: N 45 32.67' Long: W 122 40.29'	n/a	320	503-413-4232	X		I/Burn

Resources

Branch Division Group	Radio Designator	Name	Capability
ICP	Medical	O-30.21 Howell	BLS
	Med-trainee	O-30.62 Smith	ALS
	ICP Medical	O-78 Seitz	BLS
A	EMT 4	O-24 Beasley	BLS
	Medic 6	O-61 Dellaquila	ALS
	AMBO 53	E-53 Carino/High	ALS
M	REMS 1	O-21 Haver	ALS
	EMT 5	O-25 Garrett	BLS
	Medic 9	O-76 Welander	ALS
	Medic 7	O-62 Neel	ALS
Z	AMBO 20	E-20 Miller/Nakonechnyy	BLS
	EMT 3	O-23 Clarks	BLS
	Medic 8	O-63 Dobson	ALS

***** Ambulance Rendezvous Point at DP 80 for Hospital Transport*****
Lat: 42 24.085 Long: 120 36.579

Prepared By (MEDL)	Date	Reviewed By (Safety)	10. Date
Kevin Smith MedL-t	09-26-2023	Eric Brown	09-26-2023

Medical Incident Report

In the event of a medical emergency contact **Communications** and utilize the **Medical Incident Report** (found on page 118 in the IRPG or the last page of the IAP) to provide information to communications.

Medical Incident Report

FOR A NON-EMERGENCY INCIDENT, WORK THROUGH CHAIN OF COMMAND TO REPORT AND TRANSPORT INJURED PERSONNEL AS NECESSARY.

FOR A MEDICAL EMERGENCY: IDENTIFY ON SCENE INCIDENT COMMANDER BY NAME AND POSITION AND ANNOUNCE "MEDICAL EMERGENCY" TO INITIATE RESPONSE FROM IMT COMMUNICATIONS/DISPATCH.

Use the following items to communicate situation to communications/dispatch.

1. CONTACT COMMUNICATIONS / DISPATCH (Verify correct frequency prior to starting report)

Ex: "Communications, Div. Alpha. Stand-by for Emergency Traffic."

2. INCIDENT STATUS: Provide incident summary (including number of patients) and command structure.

Ex: "Communications, I have a Red priority patient, unconscious, struck by a falling tree. Requesting air ambulance to Forest Road 1 at (Lat./Long.) This will be the Trout Meadow Medical, IC is TFLD Jones. EMT Smith is providing medical care."

Severity of Emergency / Transport Priority	<input type="checkbox"/> RED / PRIORITY 1 Life or limb threatening injury or illness. Evacuation need is IMMEDIATE <i>Ex: Unconscious, difficulty breathing, bleeding severely, 2° – 3° burns more than 4 palm sizes, heat stroke, disoriented.</i> <input type="checkbox"/> YELLOW / PRIORITY 2 Serious Injury or illness. Evacuation may be DELAYED if necessary. <i>Ex: Significant trauma, unable to walk, 2° – 3° burns not more than 1-3 palm sizes.</i> <input type="checkbox"/> GREEN / PRIORITY 3 Minor Injury or illness. Non-Emergency transport <i>Ex: Sprains, strains, minor heat-related illness.</i>	
Nature of Injury or Illness & Mechanism of Injury		<i>Brief Summary of Injury or Illness (Ex: Unconscious, Struck by Falling Tree)</i>
Transport Request		<i>Air Ambulance / Short Haul/Hoist Ground Ambulance / Other</i>
Patient Location		<i>Descriptive Location & Lat. / Long. (WGS84)</i>
Incident Name		<i>Geographic Name + "Medical" (Ex: Trout Meadow Medical)</i>
On-Scene Incident Commander		<i>Name of on-scene IC of Incident within an Incident (Ex: TFLD Jones)</i>
Patient Care		<i>Name of Care Provider (Ex: EMT Smith)</i>

3. INITIAL PATIENT ASSESSMENT: Complete this section for each patient as applicable (start with the most severe patient)

Patient Assessment: See IRPG page 106

Treatment:

4. TRANSPORT PLAN:

Evacuation Location (if different): (Descriptive Location (drop point, intersection, etc.) or Lat. / Long.) Patient's ETA to Evacuation Location:

Helispot / Extraction Site Size and Hazards:

5. ADDITIONAL RESOURCES / EQUIPMENT NEEDS:

Example: Paramedic/EMT, Crews, Immobilization Devices, AED, Oxygen, Trauma Bag, IV/Fluid(s), Splints, Rope rescue, Wheeled litter, HAZMAT, Extrication

6. COMMUNICATIONS: Identify State Air/Ground EMS Frequencies and Hospital Contacts as applicable

Function	Channel Name/Number	Receive (RX)	Tone/NAC *	Transmit (TX)	Tone/NAC *
COMMAND					
AIR-TO-GRND					
TACTICAL					

7. CONTINGENCY: Considerations: If primary options fail, what actions can be implemented in conjunction with primary evacuation method? Be thinking ahead.

8. ADDITIONAL INFORMATION: Updates/Changes, etc.

REMEMBER: Confirm ETA's of resources ordered. Act according to your level of training. Be Alert. Keep Calm. Think Clearly. Act Decisively.