







<b>ICS Form 202 INCIDENT OBJECTIVES</b>	1. INCIDENT NAME <b>Bedrock / Lookout / Pothole / Horse Creek / Pete's Lake</b>	2. DATE <b>09/18/23</b>	3. TIME <b>1900</b>									
4. OPERATIONAL PERIOD (DATE/TIME) <b>09/19/2023 0700 – 09/20/2023 0700</b>												
5. GENERAL CONTROL OBJECTIVES FOR THE INCIDENT (INCLUDE ALTERNATIVES) <b>Strategic Framework</b> Implement a full suppression strategy on Bedrock, Lookout, Pothole, and Horse Creek fires; and confine, contain, and point protection strategy on Petes Lake fire within the delegation of authority. Values at risk include human safety, communities, private property, commercial timber land, family timber land, Eugene Water and Electric Board Dam, Hwy 46, Hwy 126, Elk Lake Resort, and other identified infrastructure. Apply tactics that offer the highest probability of success to meet intent and objectives while considering risk to personnel. <b>Leaders Intent</b> <ul style="list-style-type: none"> <li>• Human Factors: We will ensure that all personnel be treated with dignity and respect. We have zero tolerance for harassment, alcohol, or drug use. We will engage in all work assignments with a high degree of integrity, professionalism and provide excellent customer service to our responders, our agencies and our public.</li> <li>• Safety &amp; Risk Management: Firefighter, responder, aviator and public safety will be addressed through hazard identification, assessment and where practicable, mitigated.</li> <li>• Operations: Prioritize missions that consider risk benefit trade-offs, provide higher probability of success given on scene and expected resource capability. We will consistently evaluate environmental factors and timing of implementing strategies.</li> <li>• Agency Coordination: We will keep the Willamette National Forest, Bureau of Land Management and Oregon Department of Forestry informed of significant accomplishments, foreseen challenges and address concerns.</li> <li>• Communication: We are committed to and will coordinate with the local community to enhance key partnerships and relationships by effectively ensuring transparent, timely and accurate communication is shared.</li> <li>• Fiscal Accountability: As a responsibility and duty to the to the agencies and the public, we will monitor cost effective methods for accomplishing incident objectives and overall management of the incidents.</li> </ul> <b>Management Objectives</b> <ol style="list-style-type: none"> <li>1. Provide for the safety of firefighters, aviators and public through utilization of strategic and deliberate risk assessment. Use a deliberate risk process that might include Incident Strategic Alignment Process ISAP to evaluate operational hazards, probabilities of success and consequences of failure when designing operational missions.</li> <li>2. Limit fire spread and impacts to communities at risk, private land including industrial timber, family forest lands, recreational areas, Eugene Water and Electric Board Dam, H.J. Andrews experimental forest, Hwy 126 and other identified values of risk.</li> <li>3. Maintain and enhance relationships with the public we serve, the agencies we are assisting and the responders that we are responsible for supporting.</li> <li>4. Provide initial attack support to all lands in the designated TFR's and to those outside of TFR upon request.</li> <li>5. Adhere to the control objectives, task/purpose/end state in each Division Assignment (204) to include mitigating and repairing adverse effects to resources resulting from fire suppression activities. Approved suppression repair plans include specific actions needed to stabilize the adverse effects in the fire area.</li> </ol>												
6. WEATHER FORECAST FOR OPERATIONAL PERIOD See Attached.		7. GENERAL SAFETY MESSAGE See Attached.										
8. ATTACHMENTS <table border="0"> <tr> <td>Organization List (ICS 203)</td> <td>Medical Plan (ICS 206)</td> <td>Safety Message</td> </tr> <tr> <td>Weather Forecast</td> <td>Communications Plan (ICS 205)</td> <td>Assignments (ICS 204)</td> </tr> <tr> <td>Fire Behavior Forecast</td> <td>ICS 214</td> <td>Air Operations Summary (ICS 220)</td> </tr> </table>				Organization List (ICS 203)	Medical Plan (ICS 206)	Safety Message	Weather Forecast	Communications Plan (ICS 205)	Assignments (ICS 204)	Fire Behavior Forecast	ICS 214	Air Operations Summary (ICS 220)
Organization List (ICS 203)	Medical Plan (ICS 206)	Safety Message										
Weather Forecast	Communications Plan (ICS 205)	Assignments (ICS 204)										
Fire Behavior Forecast	ICS 214	Air Operations Summary (ICS 220)										
9. PREPARED BY 		10. APPROVED BY (Incident Commander) 										

ORGANIZATION ASSIGNMENT LIST	
1. Incident Name	
<b>Bedrock / Lookout / Horse Creek / Pothole / Pete's Lake</b>	
2. Date 09/18/2023	3. Time 1800
4. Operational Period 09/19/23 0700 – 09/20/23 0700	
5. Incident Commander and Staff	
Position	Name
Incident Commander	Jason Loomis / John Szulc (t) / Chris Hutsell (t)
Safety Officer	Marshall Brown / Rob Poyner
Information Officer	Chris Barth / Jacob Welsh (t)
Liaison Officer	Lisa Machnik / Don Turner / Kristen Bonanno (t)
Human Resources	Teresa Smergut / Mike Baines
Medical Unit Leader	Dave O'Brien / Magenta Widner (t) / Mari Bottoms (t)

6. Agency Representative	
Agency	Name
USFS AA	WIL - Darren Cross / Gabe Wishart / Heath Perrine / Allen Hambrick / Duane Bishop DES - Holly Jewkes / Robert Gentry
BAER Team	John Chatel / Wendy Peterman (t)
ODF AA	Chris Cline
ODF Agency Rep	John Flannigan / Craig Pettinger
BLM AA	Dennis Teitzel
Lane County Captain	JD Mann (Bedrock) / Cliff Harrold (Lookout)
Giustina Land and Timber	Kenny Rose
Fruit Growers	Jim Crawford
Campbell Group	Jim Hunt
Weyerhaeuser Group	Albert Kastle / Jeanne Olson
HJ Andrews Exper. Forest	Mark Schultz
Lead READ	Monty Kuk

7. Planning Section	
Position	Name
Chief	Scott Koehler / Trent Marty / Monica Ramirez (t)
SITL	Jeremy Hruska / Matt Provencher / Jason Thivener
RESL	Nicole LaGioia
GISS	Mike Cibicki / Lexi Holder / William Otto / Chantelle Delay / Bryant Mecklem (t) / Tiffany Manger (t)
DOCL	Paula Knapp
DEMOB	Brenda Bramwell
SCKN	Dina Peek / Annabelle Pfeffer (t)
FBAN	Drew Taylor
IMET	Makoto Moore / Brian Adams (t)
LTAN	Joe Hernandez (t)
ARA	Josh Hall / Amara Holder (t)
TNSP	Neal Cox

8. Logistic Section	
Position	Name
Chief	Nick Swagger / Kent Koeller / Benjamin Goodin (t) / Tony Mule (t)
Supply Unit	Jaime Chopp / TJ Wharton / Dave Cooper
Facilities Unit	Cliff Piper / Russel Hovey
Food Unit	Debra Foote / Kristy Naughton
COML	Keith Brown
Ground Support	Carlos Velez / Duane Chatham / Michael Howard / Jeffrey Burdine (t)
ITSS	Jim Grace / Flint Buchman

SECM	Tyler Smith
9. Operations Section	
Lead Ops	Sonny Caldwell / Reggie Bray
Strategic Ops	Kyle Cannon
Field Ops	Terry Walter / Dan Trapanese (t)
Planning Ops	Brandon Lewis / Jacob Gear (t)
a. Branch Bedrock	
Branch Director	Chris Lundgren / Ken Foss (t)
Division North Repair	Wes Wentworth / Meg Fluharty (t)
Division South Repair	Ted Piehl / Shane Orser (t) / Patrick Blair (t)
b. Branch I	
Branch Director	Sam Tacchini / Josh Verellen (t)
Division A / C	Ian Quist / Nathan Basford (t)
Division H	Eric Messenger / Mike Starr (t)
Division L	Darek Pepple / Colbey Richmond (t)
c. Branch V	
Branch Director	Thom Taylor / Brian Bates (t)
Division P	Mark Munoz
Division T	Cam Chambers / Kip Van DeWater (t)
Division Horse Creek / Pothole	Amy McClave / Cody St. Clair (t)
Division White Pine	Jeff Coburn / Matt Abell (t)
d. Branch Pete's Lake	
Branch Director	Reggie Bray
Division	James Honanie / Chris Burford (t)
e. Branch Lookout Staging	
Staging Manager	Todd Griffin
f. Roads Group	
Roads Bedrock North	Duane Chatham
Roads Bedrock South	Duane Chatham
Roads Lookout	Duane Chatham
g. Night	
Division Nights	Thad Niebel / Gary Crombie (t)
h. Air Operations Branch	
Branch Director	Cory Dolberry / Kyle Stump (t)
ASGS	Greg Scully / Kim Soule (t)
ATGS	Joe Tone

10. Finance Section	
Position	Name
Chief	Mariah Morris - Titus / Glenda Lindsay
Time Unit Leader	Linzy Scott / Eric Goddard (t)
Cost Unit Leader	Christy Graham
Equipment Time	Cynthia Sperling / Maria Trujillo / Dorothy Myers / William Devore / Miriam Hubbard (t)
Personnel Time	Shonni Nelson / Ana Bacocho (t) / JoAnne Gomez / Victoria Ramirez
Comp/Claims	Jessica McAloon / Amy Kenny (t)
Procurement	Juanita Dickson / Luis Carrillo (t)
ICPI	Doug Simler
COPA	Sonia Torres

Prepared by (Resource Unit Leader)  
Nicole LaGioia



# Fire Weather Forecast

## Tuesday September 19, 2023



**FORECAST NO:** 55  
**PREDICTION FOR:** Tuesday, Sep 19, 2023  
**ISSUED:** 2000, Sep 18, 2023  
**FIRE:** Bedrock/Lookout/Horse Creek/Pothole  
**UNIT:** Willamette N.F.  
**Incident Meteorologist:** Colin McKellar (T)

- **DISCUSSION:** A weak, dry cold front will move through the area today, producing cooler temperatures and increased humidities. An upper level low will start to drop southward into the region on Wednesday, with increasing chances for precipitation during the day.

### TUESDAY:

- **WEATHER:** Partly cloudy in the morning, then clearing around 1200.
- **WIND (20 FT):**
  - **Lookout:** Valleys/Lwr Slopes: Downslope 2-5 mph until 1200, then NW 3-7 mph. Ridges/Upr Slopes: W 3-8 mph to 1200, then NW 5-10 mph. Occasional gusts to 15 mph along W-E drainages/Ridges.
  - **Petes Lake:** NW 3-8 mph through around 1000, then NW 7-12 mph with gusts 15-20 mph through 2200.
- **MAX TEMPERATURES:** 66-71 valleys and mid-slopes/55-60 ridges and Petes Lake Fire.
- **MIN RH:**
  - **Lookout:** 35-45%                      **Petes Lake:** 34-39%
- **INVERSION:** Moderate/Mixed between 1200-1400. **MID HAINES:** 3.

### TUESDAY NIGHT:

- **WEATHER:** Partly cloudy, becoming mostly cloudy after Midnight.
- **WIND (20 FT):**
  - **Lookout:** Valleys/Lwr Slopes: Downslope 2-5 mph. Ridges/Upr Slopes: NW 3-8 mph.
  - **Petes Lake:** NW 4-9 mph.
- **MIN TEMPERATURES:** **Lookout:** 40-46. **Petes Lake:** 35-39.
- **MAX RH:**
  - **Lookout:** 85-95%                      **Petes Lake:** 75-85%

### WEDNESDAY:

- **WEATHER:** Mostly cloudy with a 50% chance of showers between 0600-1200, becoming partly cloudy with a 20% chance of showers between 1200-1800.
- **WIND (20 FT):**
  - **Lookout:** Valleys/Lwr Slopes: Downslope 3-5 mph through 1200, then NW 4-8 mph. Ridges/Upper Slopes: NW 3-7 mph through 1200 then NW 5-10 mph with gusts 13-18 mph.
  - **Petes Lake:** NW 4-8 mph through 1000, then NW 10-15 mph with gusts 20-25 mph through 2200.
- **MAX TEMPERATURES:** 54-59 valleys and mid-slopes, 45-50 ridges and Pete's Lake.
- **MIN RH:**
  - **Lookout:** 60-70%                      **Petes Lake:** 50-60%
- **INVERSION:** Moderate/Mixed between 1200-1400. **MID HAINES:** 3.

**Extended outlook:** Thursday through Sunday: There is a slight chance for showers on Thursday as the upper level low pressure continues to track southward into Nevada. This will lead to several days of below average temperatures with excellent overnight humidity recoveries. The pattern remains active into next weekend.

**Sunrise:** 06:56 PDT    **Sunset:** 19:17 PDT

# FIRE BEHAVIOR FORECAST

<b>FORECAST NUMBER: 38</b>	<b>TYPE OF FIRE:</b> Wildfire
<b>FIRE NAME:</b> Lookout/Bedrock/Horse Creek/Pothole/Petes Lake	<b>OPERATIONAL PERIOD:</b> 09/19/2023 (day/night)
<b>DATE ISSUED:</b> 09/18/2023	<b>TIME ISSUED:</b> 2000 Hours
<b>UNIT:</b> OR-WIF, Willamette National Forest	<b>SIGNED:</b> ANDREW TAYLOR <small>Digitally signed by ANDREW TAYLOR Date: 2023.09.18 20:36:42 -07'00'</small>

## INPUTS

**WEATHER SUMMARY:** *Cooling and wetting weather pattern persisting through the week.*

**FUELS:**

Today will start a more significant cooling and wetting trend. Expect temperatures decreasing and RH values increasing over the next few days. 100 hr, and 1000 hr dead fuels will be the main contributors to fire behavior. Good overnight Humidity recoveries will contribute to diminished potential during the day. There is a chance of precipitation over all of the fires starting Wednesday morning and lasting through the day.

## OUTPUTS

**FIRE BEHAVIOR GENERAL:**

Moderate fire weather conditions are expected to continue through the week and even through the weekend. Dead and down fuel loading in timber will be primary mechanism on any of the fires. The fires have been reliant on sunlight, hot temperatures and low RH values over the past couple of days and had become active in the afternoon and evening when the inversion had lifted. There was a noticeable decline in fire behavior on both Lookout and Pete's Lake Fire yesterday due to cooler temperatures and higher RH values. Pete's Lake has higher probability of wind/ slope alignment and forward growth to the East with ROS of 2 to 3 ch/hr possible but unlikely.



**Based on Peak Wx and Fuels conditions:**

- Fine Dead Fuel Moisture- 6-9% Petes Lake, 7-11% Lookout
- PIG around 40-50% (shaded/unshaded), lower under the canopy in the compact duff.
- Spotting up to ¼ mile (Pete's Lake) but mostly short range and primarily through roll out on Lookout fire.

**FIRE BEHAVIOR SPECIFIC:**

**South Aspects/Exposed Ridges** – South aspects have the highest potential for burning when they can be exposed more to sun and wind. Still expect low rates of spread due to higher fuel moisture levels in the 1- and 10-hour fuels. Most spread will be through short range roll out and backing fire. There may be some isolated single tree torching when there is a heavy enough fuel concentration and wind and slope line up.

**North Aspects** – Rates of spread on the north slopes will remain low and will be primarily through the larger fuels, aided by roll out. Fire North end of Lookout and on the Pete's Lake Fire will remain active through backing and produce occasional single tree torching as it finds heavy fuel concentrations. Could see isolated short runs upslope where fuels can align with wind and slope but will be isolated and rare.

**IA** – New starts will present low resistance to control with current weather conditions.

**Night Shift** – Fire behavior will moderate earlier and to a greater extent than previous nights with much better humidity recovery, and cooler temperatures forecasted. Heavy fuels will continue smolder through the night with little movement expected. Rollout and snag fall will continue.

**AIR OPERATIONS:**

Use the appropriate aircraft for the mission. Are Air operations necessary?

## SAFETY

As fire continues to consume fuels and move through timber, asses work locations for fire weakened trees and other hazards such as stump holes.



**Division/Group Assignment List (ICS 204 WF)**  
Controlled Unclassified Information//Basic

<b>1. Incident Name:</b>			<b>3.</b>			
BEDROCK LOOKOUT			<b>Branch:</b>		<b>Division/Group</b>	
<b>2. Operational Period:</b> DAY / NIGHT			BEDROCK		NORTH REPAIR	
Date/Time From: 09/19/2023 0700 TUE	Date/Time To: 09/20/2023 0700 WED					
<b>4. Operations Personnel</b>						
<b>FIELD OPS</b>		TERRY WALTER DAN TRAPANESE (T)		<b>BRANCH DIRECTOR</b>		CHRIS LUNDGREN KEN FOSS (T)
<b>AIR ATTACK SUPERVISOR</b>		JOE TONE		<b>DIVISION/GROUP SUPERVISOR</b>		WES WENTWORTH (LWD 9/27) MEG FLUHARTY (LWD 10/1) (T)
<b>5. Resources Assigned this Period</b>						
Strike Team / Task Force / Resource Designator		LWD	Leader	Number Persons	Drop Off PT./Time	Pick Up PT./Time
TFLD O-730		09/24	QUINLAN ANDERSON	1	LOOKOUT ICP/0700	LOOKOUT ICP/2000
TFLD (T) O-596		09/19	KELLY SENSECQUA	1	LOOKOUT ICP/0700	LOOKOUT ICP/2000
TFLD (T) O-731		09/24	SEQUOIA GJERDE	1	LOOKOUT ICP/0700	LOOKOUT ICP/2000
HEQB O-571		09/19	TOMMY PETERS	1	LOOKOUT ICP/0700	LOOKOUT ICP/2000
HEQB O-728		09/22	OLIVER BOSSERT	1	LOOKOUT ICP/0700	LOOKOUT ICP/2000
HEQB O-732		09/27	JAIME MARISCAL	1	LOOKOUT ICP/0700	LOOKOUT ICP/2000
HEQB (T) O-814		09/27	JOSH VIERRIA	1	LOOKOUT ICP/0700	LOOKOUT ICP/2000
HEQB O-812		10/01	JAYDEN CHYNOWETH	1	LOOKOUT ICP/0700	LOOKOUT ICP/2000
FELB O-738		09/27	CHRIS WENNOGLE	1	LOOKOUT ICP/0700	LOOKOUT ICP/2000
FMOD O-721 CUT RITE - DULE 7		09/21	SEAN BENNING	2	LOOKOUT ICP/0700	LOOKOUT ICP/2000
FMOD O-722 CUT RITE INC - DULE 6		09/21	JOHN MULLENIX	2	LOOKOUT ICP/0700	LOOKOUT ICP/2000
HC2 C-81 1ST CHOICE CONTRACTING (BDRK)		09/29	ENRIQUE MANZO	20	LOOKOUT ICP/0700	LOOKOUT ICP/2000
HC2 C-103 FRANCO REFORESTATION C-1		10/01	ARMANDO CASTRO	20	LOOKOUT ICP/0700	LOOKOUT ICP/2000
ENG6 E-662 FIRST STRIKE ENVIRONMENTAL		10/01	SPENCER BERLIER	3	LOOKOUT ICP/0700	LOOKOUT ICP/2000
ENG4 E-665 FIREMOG		10/01	MIKE PARENT	3	LOOKOUT ICP/0700	LOOKOUT ICP/2000
EXC1 E-545 EERA - BFC LIMITED		09/29	TODD WEST	2	LOOKOUT ICP/0700	LOOKOUT ICP/2000
EXC1 E-546 EERA - AXSUS ENTERPRISES		09/28	CHARLES MAIDWARING	2	LOOKOUT ICP/0700	LOOKOUT ICP/2000
EXC2 E-227 DEAN INNOVATIONS		10/07	SCOTT SIMMONS	2	LOOKOUT ICP/0700	LOOKOUT ICP/2000
EXC2 E-468 4-Q TIMBER		09/20	ANTHONY BALDWIN	2	LOOKOUT ICP/0700	LOOKOUT ICP/2000
EXC2 E-510 OUTBACK WILDFIRE		09/23	TODD HALEY	2	LOOKOUT ICP/0700	LOOKOUT ICP/2000
<b>8. Division/Group Communication Summary</b>						
Function	Channel	RX Frequency N/W	RX Tone/NAC	TX Frequency N/W	TX Tone/NAC	Mode
TACTICAL	SEE COM PLAN					
COMMAND	SEE COM PLAN					
<b>9. Prepared By (Resource Unit Leader)</b>			<b>Approved By (Planning Section Chief)</b>		<b>Date</b>	<b>Time</b>
NICOLE LAGIOIA			MONICA RAMIREZ		09/18/2023	2000

**Division/Group Assignment List (ICS 204 WF)**  
Controlled Unclassified Information//Basic

<b>1. Incident Name:</b>				<b>3.</b>		
BEDROCK LOOKOUT				<b>Branch:</b>  BEDROCK	<b>Division/Group</b>  NORTH REPAIR	
<b>2. Operational Period:</b> DAY / NIGHT						
Date/Time From: 09/19/2023 0700 TUE		Date/Time To: 09/20/2023 0700 WED				
<b>4. Operations Personnel</b>						
<b>FIELD OPS</b>		TERRY WALTER DAN TRAPANESE (T)		<b>BRANCH DIRECTOR</b>		CHRIS LUNDGREN KEN FOSS (T)
<b>AIR ATTACK SUPERVISOR</b>		JOE TONE		<b>DIVISION/GROUP SUPERVISOR</b>		WES WENTWORTH (LWD 9/27) MEG FLUHARTY (LWD 10/1) (T)
<b>5. Resources Assigned this Period</b>						
Strike Team / Task Force / Resource Designator		LWD	Leader	Number Persons	Drop Off PT./Time	Pick Up PT./Time
SKD1 E-299 MARK JONES		09/27	CASEY HUNTLEY	2	LOOKOUT ICP/0700	LOOKOUT ICP/2000
SKD1 E-672 T2, INC.		10/02	JAKE WILLE	2	LOOKOUT ICP/0700	LOOKOUT ICP/2000
CHP1 E-531 TOP NOTCH		10/02	KYLE ARMIJO	2	LOOKOUT ICP/0700	LOOKOUT ICP/2000
CHP1 E-543 BFC LIMITED		09/29	TODD WEST	2	LOOKOUT ICP/0700	LOOKOUT ICP/2000
CHP2 E-481 BIG BARK CHIPPER (BDRK)		09/19	JACKIE LANGE	3	LOOKOUT ICP/0700	LOOKOUT ICP/2000
CHP2 E-505 SAYLOR CONSTRUCTION (BDRK)		09/24	CALEB FINK	3	LOOKOUT ICP/0700	LOOKOUT ICP/2000
CHSL E-532 EERA - BFC LIMITED		09/25	FORTINO LARIOS	2	LOOKOUT ICP/0700	LOOKOUT ICP/2000
WTS2 E-370 LEE ROY BELLOIR & SONS (BDRK)		09/22	ROSS BELLIOR	1	LOOKOUT ICP/0700	LOOKOUT ICP/2000
FRNT E-656 EERA - ROSE LOGGING		09/30	ROB MCCOLLOUGH	2	LOOKOUT ICP/0700	LOOKOUT ICP/2000
DUMP E-652 EERA - MARK JONES TRUCKING		10/01	JERRY WOLFORD	2	LOOKOUT ICP/0700	LOOKOUT ICP/2000
DUMP E-653 EERA - MARK JONES TRUCKING		10/01	BUDDY CLEGG	1	LOOKOUT ICP/0700	LOOKOUT ICP/2000
LOGP E-333 AXSUS		10/01	SKYLER WILSON	2	LOOKOUT ICP/0700	LOOKOUT ICP/2000
LOGP E-334 AXSUS		10/01	JOSE SERANO	2	LOOKOUT ICP/0700	LOOKOUT ICP/2000
LOGL E-512 BRINK BROTHERS (BDRK)		09/25	JASON LEWIS	2	LOOKOUT ICP/0700	LOOKOUT ICP/2000
LOGT E-526 MARK JONES #1		09/30	RON ELLIOTT	1	LOOKOUT ICP/0700	LOOKOUT ICP/2000
TUBG E-542 BRINK BROTHERS		09/27	ROBERT BRINK	2	LOOKOUT ICP/0700	LOOKOUT ICP/2000
SOF2 O-777		09/21	SETH WILLIAMS	1	LOOKOUT ICP/0700	LOOKOUT ICP/2000
SOF2 (T) O-604		09/20	MATTHEW INGRAM	1	LOOKOUT ICP/0700	LOOKOUT ICP/2000
E-277 AMBO 15		09/26	LUCY CUMMINS	2	LOOKOUT ICP/0700	LOOKOUT ICP/2000
O-423 REMS 43		09/23	KAMRON GREER	4	LOOKOUT ICP/0700	LOOKOUT ICP/2000
O-424 MEDIC TEAM 38		09/22	BRANTON THOMPSON	2	LOOKOUT ICP/0700	LOOKOUT ICP/2000
<b>8. Division/Group Communication Summary</b>						
Function	Channel	RX Frequency N/W	RX Tone/NAC	TX Frequency N/W	TX Tone/NAC	Mode
TACTICAL	SEE COM PLAN					
COMMAND	SEE COM PLAN					
<b>9. Prepared By (Resource Unit Leader)</b>			<b>Approved By (Planning Section Chief)</b>		<b>Date</b>	<b>Time</b>
NICOLE LAGIOIA			MONICA RAMIREZ		09/18/2023	2000



**Division/Group Assignment List (ICS 204 WF)**  
Controlled Unclassified Information//Basic

<b>1. Incident Name:</b>			<b>3.</b>			
BEDROCK LOOKOUT			<b>Branch:</b>		<b>Division/Group</b>	
<b>2. Operational Period:</b> DAY / NIGHT			BEDROCK		NORTH REPAIR	
Date/Time From: 09/19/2023 0700 TUE	Date/Time To: 09/20/2023 0700 WED					
<b>4. Operations Personnel</b>						
<b>FIELD OPS</b>		TERRY WALTER DAN TRAPANESE (T)		<b>BRANCH DIRECTOR</b>		CHRIS LUNDGREN KEN FOSS (T)
<b>AIR ATTACK SUPERVISOR</b>		JOE TONE		<b>DIVISION/GROUP SUPERVISOR</b>		WES WENTWORTH (LWD 9/27) MEG FLUHARTY (LWD 10/1) (T)
<b>5. Resources Assigned this Period</b>						
Strike Team / Task Force / Resource Designator		LWD	Leader	Number Persons	Drop Off PT./Time	Pick Up PT./Time
REAF O-284		09/22	MIKE LARMAN	1	LOOKOUT ICP/0700	LOOKOUT ICP/2000
REAF O-696		09/24	DONALD YOUKEY	1	LOOKOUT ICP/0700	LOOKOUT ICP/2000
REAF O-805			ELLIOTT WHARTON	1	LOOKOUT ICP/0700	LOOKOUT ICP/2000
REAF O-818			BRANDYN CHILD	1	LOOKOUT ICP/0700	LOOKOUT ICP/2000
<b>6. Control Operations/Work Assignments:</b>						
<p><u>Task:</u> Continue with log hauling operations along the 18 and spur roads. Repair dozerline utilizing excavators from DP-122 to DP-208. Utilize hand crew to repair existing hand lines. Continue chipping operations throughout the Division. Utilize engines to patrol fire perimeter and address smoke and areas of heat as necessary.</p> <p><u>Purpose:</u> Aid in the completion of repair efforts to areas disturbed by wildfire suppression.</p> <p><u>End State:</u> Complete fire suppression repair activities north and west of DP123 and north and east of DP205. Follow actions outlined in the suppression repair plan.</p>						
<b>7. Special Instructions:</b>						
<p>*Denotes resources for Initial Attack (IA)</p> <p>BAER team members will be working in Divisions North Repair and South Repair. BAER team will notify DIVS when working in North or South Repair.</p> <p><b>Needs:</b> HEQB x 1; TFLD x 1</p>						
<b>8. Division/Group Communication Summary</b>						
Function	Channel	RX Frequency N/W	RX Tone/NAC	TX Frequency N/W	TX Tone/NAC	Mode
TACTICAL	SEE COM PLAN					
COMMAND	SEE COM PLAN					
<b>9. Prepared By (Resource Unit Leader)</b>			<b>Approved By (Planning Section Chief)</b>		<b>Date</b>	<b>Time</b>
NICOLE LAGIOIA			MONICA RAMIREZ		09/18/2023	2000

**Division/Group Assignment List (ICS 204 WF)**  
Controlled Unclassified Information//Basic

<b>1. Incident Name:</b>			<b>3.</b>			
BEDROCK LOOKOUT			<b>Branch:</b>		<b>Division/Group</b>	
<b>2. Operational Period:</b> DAY / NIGHT			BEDROCK		SOUTH REPAIR	
Date/Time From: 09/19/2023 0700 TUE	Date/Time To: 09/20/2023 0700 WED					
<b>4. Operations Personnel</b>						
<b>FIELD OPS</b>		TERRY WALTER DAN TRAPANESE (T)		<b>BRANCH DIRECTOR</b>		CHRIS LUNDGREN KEN FOSS (T)
<b>AIR ATTACK SUPERVISOR</b>		JOE TONE		<b>DIVISION/GROUP SUPERVISOR</b>		TED PIEHL (LWD 9/27) SHANE ORSER / PATRICK BLAIR (T)
<b>5. Resources Assigned this Period</b>						
Strike Team / Task Force / Resource Designator	LWD	Leader	Number Persons	Drop Off PT./Time	Pick Up PT./Time	
HEQB O-732	09/28	BRIAN JOHNSON	1	LOOKOUT ICP/0700	LOOKOUT ICP/2000	
HEQB O-838	09/24	BRYAN VESCE	1	LOOKOUT ICP/0700	LOOKOUT ICP/2000	
HEQB (T) O-742	09/28	DEREK DOMIS	1	LOOKOUT ICP/0700	LOOKOUT ICP/2000	
HEQB (T) O-839	09/23	DANA MASTROIANNI	1	LOOKOUT ICP/0700	LOOKOUT ICP/2000	
FMOD O-795 HANDCCUTTING	09/29	CORY KEFFER	2	LOOKOUT ICP/0700	LOOKOUT ICP/2000	
HC2IA C-91 PACIFIC OASIS 14A	09/20	NICK LOPEZ	20	LOOKOUT ICP/0700	LOOKOUT ICP/2000	
HC2 C-100 MR CONTRACTING C-2	09/30	MANUEL JIMENEZ	20	LOOKOUT ICP/0700	LOOKOUT ICP/2000	
HC2 C-101 MR CONTRACTING C-1	09/30	TOMAS GUZMAN GARCIA	20	LOOKOUT ICP/0700	LOOKOUT ICP/2000	
HC2 C-104 WILLAMETTE VALLEY REFOR. C-7	10/02	JAVIER GUZMAN	20	LOOKOUT ICP/0700	LOOKOUT ICP/2000	
ENG4 E-1 J3 CONTRACTING (BDRK)	09/21	DAN TEGART	3	LOOKOUT ICP/0700	LOOKOUT ICP/2000	
*ENG4 E-262 CHEWACK	09/19	ANDREW GRAVES	3	LOOKOUT ICP/0700	LOOKOUT ICP/2000	
*ENG4 E-268 AAA THUNDERBOLT	09/25	MONTIE REYNOLDS	3	LOOKOUT ICP/0700	LOOKOUT ICP/2000	
ENG4 E-664 FIREMOG	10/02	JACE HOFFMAN	3	LOOKOUT ICP/0700	LOOKOUT ICP/2000	
ENG4 E-666 TORRES CONTRACTING	10/02	JUAN TORRES	3	LOOKOUT ICP/0700	LOOKOUT ICP/2000	
EXC1 E-674 ZEB'S TREE SERVICE	10/02	DANNY GOODRICH	2	LOOKOUT ICP/0700	LOOKOUT ICP/2000	
EXC2 E-654 EARNEST HEATHER	10/01	MITCH GRIFFITH	2	LOOKOUT ICP/0700	LOOKOUT ICP/2000	
EXC2 E-655 ZEB'S TREE SERVICE	10/01	CAMERON HOMES	2	LOOKOUT ICP/0700	LOOKOUT ICP/2000	
SOF2 O-447.50	09/21	SETH WILLIAMS	1	LOOKOUT ICP/0700	LOOKOUT ICP/2000	
SOFC (T) O-604	09/20	MATTHEW INGRAM	1	LOOKOUT ICP/0700	LOOKOUT ICP/2000	
<b>8. Division/Group Communication Summary</b>						
Function	Channel	RX Frequency N/W	RX Tone/NAC	TX Frequency N/W	TX Tone/NAC	Mode
TACTICAL	SEE COM PLAN					
COMMAND	SEE COM PLAN					
<b>9. Prepared By (Resource Unit Leader)</b>		<b>Approved By (Planning Section Chief)</b>		<b>Date</b>	<b>Time</b>	
NICOLE LAGIOIA		MONICA RAMIREZ		09/18/2023	2000	

**Division/Group Assignment List (ICS 204 WF)**  
Controlled Unclassified Information//Basic

<b>1. Incident Name:</b>			<b>3.</b>			
BEDROCK LOOKOUT			<b>Branch:</b>		<b>Division/Group</b>	
<b>2. Operational Period: DAY / NIGHT</b>			BEDROCK		SOUTH REPAIR	
Date/Time From: 09/19/2023 0700 TUE	Date/Time To: 09/20/2023 0700 WED					
<b>4. Operations Personnel</b>						
<b>FIELD OPS</b>	TERRY WALTER DAN TRAPANESE (T)		<b>BRANCH DIRECTOR</b>		CHRIS LUNDGREN KEN FOSS (T)	
<b>AIR ATTACK SUPERVISOR</b>	JOE TONE		<b>DIVISION/GROUP SUPERVISOR</b>		TED PIEHL (LWD 9/27) SHANE ORSER / PATRICK BLAIR (T)	
<b>5. Resources Assigned this Period</b>						
Strike Team / Task Force / Resource Designator	LWD	Leader	Number Persons	Drop Off PT./Time	Pick Up PT./Time	
O-554 EMT 119	09/24	NADIA JENMAN	1	LOOKOUT ICP/0700	LOOKOUT ICP/2000	
E-14 AMBO 10 (BDRK)	09/28	ANDRE MARTONI	2	LOOKOUT ICP/0700	LOOKOUT ICP/2000	
REAF O-284	09/22	MIKE LARMAN	1	LOOKOUT ICP/0700	LOOKOUT ICP/2000	
REAF O-727	09/22	NOAH HEIDENREICH	1	LOOKOUT ICP/0700	LOOKOUT ICP/2000	
REAF O-725	09/24	OLIVIA GUTHRIE	1	LOOKOUT ICP/0700	LOOKOUT ICP/2000	
REAF O-726	09/22	SHANNON MCCOY	1	LOOKOUT ICP/0700	LOOKOUT ICP/2000	
ARCH O-807	10/01	JENNIFER HERNANDEZ	1	LOOKOUT ICP/0700	LOOKOUT ICP/2000	
REAF O-818		BRANDYN CHILD	1	LOOKOUT ICP/0700	LOOKOUT ICP/2000	
<b>6. Control Operations/Work Assignments:</b>						
<p><u>Task:</u> Utilize crews to mop up, continue dozer/handline repair and backhaul of unneeded equipment. Utilize heavy equipment to continue with dozer line and drainage repair. Utilize engines to patrol fire perimeter and address smoke and areas of heat as necessary.</p> <p><u>Purpose:</u> Restore lands impacted by wildfire and suppression tactics.</p> <p><u>End State:</u> Lands restored.</p>						
<b>7. Special Instructions:</b>						
<p>*Denotes resources for Initial Attack (IA)</p> <p>BAER team members will be working in Divisions North Repair and South Repair. BAER team will notify DIVS when working in North or South Repair.</p> <p><b>Needs:</b> EXC2 x 1; TFLD x 2</p>						
<b>8. Division/Group Communication Summary</b>						
Function	Channel	RX Frequency N/W	RX Tone/NAC	TX Frequency N/W	TX Tone/NAC	Mode
TACTICAL	SEE COM PLAN					
COMMAND	SEE COM PLAN					
<b>9. Prepared By (Resource Unit Leader)</b>		<b>Approved By (Planning Section Chief)</b>		<b>Date</b>	<b>Time</b>	
NICOLE LAGIOIA		MONICA RAMIREZ		09/18/2023	2000	

**Division/Group Assignment List (ICS 204 WF)**  
Controlled Unclassified Information//Basic

<b>1. Incident Name:</b>			<b>3.</b>			
BEDROCK LOOKOUT			<b>Branch:</b>		<b>Division/Group</b>	
<b>2. Operational Period:</b> DAY / NIGHT			I		A / C	
Date/Time From: 09/19/2023 0700 TUE	Date/Time To: 09/20/2023 0700 WED					
<b>4. Operations Personnel</b>						
<b>FIELD OPS</b>		TERRY WALTER DAN TRAPANESE (T)		<b>BRANCH DIRECTOR</b>		SAM TACCHINI JOSH VERELLEN (T)
<b>AIR ATTACK SUPERVISOR</b>		JOE TONE		<b>DIVISION/GROUP SUPERVISOR</b>		IAN QUIST (LWD 9/20) NATHAN BASFORD (LWD 9/25) (T)
<b>5. Resources Assigned this Period</b>						
Strike Team / Task Force / Resource Designator		LWD	Leader	Number Persons	Drop Off PT./Time	Pick Up PT./Time
TASK FORCE A					LOOKOUT ICP/0700	LOOKOUT ICP/2000
TFLD O-583		09/19	SHAUN MULLINS	1	LOOKOUT ICP/0700	LOOKOUT ICP/2000
FMOD O-794 FALLER MODULE		09/29	CHRIS REED	2	LOOKOUT ICP/0700	LOOKOUT ICP/2000
HC2 C-37 LAVA RIVER C2		09/19	JAMIE RAMOS	20	LOOKOUT ICP/0700	LOOKOUT ICP/2000
ENG4 E-633 NVEKD E1444		09/26	BLAKE JONES	4	LOOKOUT ICP/0700	LOOKOUT ICP/2000
TASK FORCE C					LOOKOUT ICP/0700	LOOKOUT ICP/2000
TFLD (T) O-652		09/20	GAVIN YOUNG	1	LOOKOUT ICP/0700	LOOKOUT ICP/2000
HC2 C-102 FRANCO REFORESTATION C-2		10/01	FRANCIS LEE FRANCO		LOOKOUT ICP/0700	LOOKOUT ICP/2000
ENG3 E-524 WILDLAND SUPRT TM		09/29	MIKE JARAMILLO	3	LOOKOUT ICP/0700	LOOKOUT ICP/2000
SKD1 E-671 SKD1 - MKS LOGISTICS LLC - Z01599		10/01	SHANE HUFFMAN	2	LOOKOUT ICP/0700	LOOKOUT ICP/2000
EXC2 E-541 VALLEY TIMBER		09/25	NELSON TREAVOR	2	LOOKOUT ICP/0700	LOOKOUT ICP/2000
SOFR O-715.99		09/30	RYDER JONES	1	LOOKOUT ICP/0700	LOOKOUT ICP/2000
SOFR (T) O-720		09/24	PATRICK ROMPORTL	1	LOOKOUT ICP/0700	LOOKOUT ICP/2000
E-433 AMBO 308		09/24	ALI HAMMOUDEH	2	LOOKOUT ICP/0700	LOOKOUT ICP/2000
O-676 MEDIC 222		09/23	RITVIK CHAKRABORTY	1	LOOKOUT ICP/0700	LOOKOUT ICP/2000
REAF O-638		09/20	MARK RICHARDSON	1	LOOKOUT ICP/0700	LOOKOUT ICP/2000
REAF O-693		09/23	MARK LEIS	1	LOOKOUT ICP/0700	LOOKOUT ICP/2000
<b>6. Control Operations/Work Assignments:</b>						
<u>Task:</u> Complete repair work in Division A. Extinguish all areas of concern for escape between DP78 to DP11. Monitor and secure fire above 360 road.						
<u>Purpose:</u> Repair fire impacts and minimize fire impacts to private residences and HJ Experimental Forest						
<b>8. Division/Group Communication Summary</b>						
Function	Channel	RX Frequency N/W	RX Tone/NAC	TX Frequency N/W	TX Tone/NAC	Mode
TACTICAL	SEE COM PLAN					
COMMAND	SEE COM PLAN					
<b>9. Prepared By (Resource Unit Leader)</b>			<b>Approved By (Planning Section Chief)</b>		<b>Date</b>	<b>Time</b>
NICOLE LAGIOIA			MONICA RAMIREZ		09/18/2023	2000

**Division/Group Assignment List (ICS 204 WF)**  
Controlled Unclassified Information//Basic

<b>1. Incident Name:</b>				<b>3.</b>			
BEDROCK LOOKOUT				<b>Branch:</b>		<b>Division/Group</b>	
<b>2. Operational Period: DAY / NIGHT</b>				I		A / C	
Date/Time From: 09/19/2023 0700 TUE		Date/Time To: 09/20/2023 0700 WED					
<b>4. Operations Personnel</b>							
<b>FIELD OPS</b>		TERRY WALTER DAN TRAPANESE (T)		<b>BRANCH DIRECTOR</b>		SAM TACCHINI JOSH VERELLEN (T)	
<b>AIR ATTACK SUPERVISOR</b>		JOE TONE		<b>DIVISION/GROUP SUPERVISOR</b>		IAN QUIST (LWD 9/20) NATHAN BASFORD (LWD 9/25) (T)	
<b>6. Control Operations/Work Assignments:</b>							
<p>infrastructure.</p> <p><u>End State:</u> Infrastructure and other areas to be protected between DP78 to DP11 have been secured. Fire impacts have been returned to their previous conditions to the extent possible.</p>							
<b>7. Special Instructions:</b>							
<p>Begin rehab on contingency lines in Division A.</p> <p>Continue to improve contingency lines in Division A</p> <p><b>Needs:</b> HEQB x 1; LOGL (tracked) x 1; ENG6 x1; LOGP x 1</p>							
<b>8. Division/Group Communication Summary</b>							
Function	Channel	RX Frequency N/W	RX Tone/NAC	TX Frequency N/W	TX Tone/NAC	Mode	
TACTICAL	SEE COM PLAN						
COMMAND	SEE COM PLAN						
<b>9. Prepared By (Resource Unit Leader)</b>			<b>Approved By (Planning Section Chief)</b>			<b>Date</b>	<b>Time</b>
NICOLE LAGIOIA			MONICA RAMIREZ			09/18/2023	2000

**Division/Group Assignment List (ICS 204 WF)**  
Controlled Unclassified Information//Basic

<b>1. Incident Name:</b>			<b>3.</b>			
BEDROCK LOOKOUT			<b>Branch:</b>		<b>Division/Group</b>	
<b>2. Operational Period:</b> DAY / NIGHT			I		H	
Date/Time From: 09/19/2023 0700 TUE		Date/Time To: 09/20/2023 0700 WED				
<b>4. Operations Personnel</b>						
<b>FIELD OPS</b>		TERRY WALTER DAN TRAPANESE (T)		<b>BRANCH DIRECTOR</b>		SAM TACCHINI JOSH VERELLEN (T)
<b>AIR ATTACK SUPERVISOR</b>		JOE TONE		<b>DIVISION/GROUP SUPERVISOR</b>		ERIC MESSENGER (LWD 9/21) MIKE STARR (LWD 9/21) (T)
<b>5. Resources Assigned this Period</b>						
Strike Team / Task Force / Resource Designator		LWD	Leader	Number Persons	Drop Off PT./Time	Pick Up PT./Time
TFLD O-700		09/25	KEITH CRAIN	1	LOOKOUT ICP/0700	LOOKOUT ICP/2000
TFLD (T) O-699		09/23	JOSUE GONZALEZ	1	LOOKOUT ICP/0700	LOOKOUT ICP/2000
HEQB O-744		09/26	ADAM HUMBACH	1	LOOKOUT ICP/0700	LOOKOUT ICP/2000
FMOD O-706 TIMBER TIPPER		09/23	GABE REDDEKOPP	2	LOOKOUT ICP/0700	LOOKOUT ICP/2000
FMOD O-837 TOMS TIMBER LLC - FMOD05 - FMOD		10/02	STEVEN JOSH	2	LOOKOUT ICP/0700	LOOKOUT ICP/2000
HC2 C-99 BIG BARK CHIPPERS #2		10/01	CHESTER FULBRIGHT	20	LOOKOUT ICP/0700	LOOKOUT ICP/2000
ENG6 E-507 R & R CONTRACTING		09/20	STEVEN KAUS	3	LOOKOUT ICP/0700	LOOKOUT ICP/2000
ENG6 E-508 EARTH INDUSTRIES		09/20	STEPHEN PLUMLEE	3	LOOKOUT ICP/0700	LOOKOUT ICP/2000
ENG6 E-630 OR-MAF - 43		09/25	KENNETH TRAPERO	3	LOOKOUT ICP/0700	LOOKOUT ICP/2000
ENG6 E-660 FIRST STRIKE		10/01	ZANDER HAMILTON	3	LOOKOUT ICP/0700	LOOKOUT ICP/2000
DZR2 E-27 J B LOGGING		10/01	JOEL HERBST	2	LOOKOUT ICP/0700	LOOKOUT ICP/2000
MBM2 E-494 PORTABLE ROCK PRODUCTION (BDRK)		09/30	KYLE WEIMER	2	LOOKOUT ICP/0700	LOOKOUT ICP/2000
FEL1 E-63 MARK JONES		09/29	ETHAN WILDLING	1	LOOKOUT ICP/0700	LOOKOUT ICP/2000
FEL1 E-100 BOULDER RIDGE		09/23	ROD HILLARD	2	LOOKOUT ICP/0700	LOOKOUT ICP/2000
FEL1 E-649 EERA - DEAN INNOVATIONS - TL745D0920-031522		09/30	DAN FUCHS	1	LOOKOUT ICP/0700	LOOKOUT ICP/2000
SKD1 E-25 RUSSELL		09/25	MARSHAL MECHAM	2	LOOKOUT ICP/0700	LOOKOUT ICP/2000
SKG1 E-320 BOULDER RIDGE		09/24	TOM HOUPT	2	LOOKOUT ICP/0700	LOOKOUT ICP/2000
SKG2 E-181 ZEB'S TREE SERVICE (BDRK)		09/22	DARRYL KUEHL	2	LOOKOUT ICP/0700	LOOKOUT ICP/2000
CHP1 E-335 AXSUS		09/27	MIKE FOWLER	2	LOOKOUT ICP/0700	LOOKOUT ICP/2000
<b>8. Division/Group Communication Summary</b>						
Function	Channel	RX Frequency N/W	RX Tone/NAC	TX Frequency N/W	TX Tone/NAC	Mode
TACTICAL	SEE COM PLAN					
COMMAND	SEE COM PLAN					
<b>9. Prepared By (Resource Unit Leader)</b>			<b>Approved By (Planning Section Chief)</b>		<b>Date</b>	<b>Time</b>
NICOLE LAGIOIA			MONICA RAMIREZ		09/18/2023	2000

**Division/Group Assignment List (ICS 204 WF)**  
Controlled Unclassified Information//Basic

<b>1. Incident Name:</b>			<b>3.</b>			
BEDROCK LOOKOUT			<b>Branch:</b>		<b>Division/Group</b>	
<b>2. Operational Period:</b> DAY / NIGHT			I		H	
Date/Time From: 09/19/2023 0700 TUE	Date/Time To: 09/20/2023 0700 WED					
<b>4. Operations Personnel</b>						
<b>FIELD OPS</b>		TERRY WALTER DAN TRAPANESE (T)		<b>BRANCH DIRECTOR</b>		SAM TACCHINI JOSH VERELLEN (T)
<b>AIR ATTACK SUPERVISOR</b>		JOE TONE		<b>DIVISION/GROUP SUPERVISOR</b>		ERIC MESSENGER (LWD 9/21) MIKE STARR (LWD 9/21) (T)
<b>5. Resources Assigned this Period</b>						
Strike Team / Task Force / Resource Designator		LWD	Leader	Number Persons	Drop Off PT./Time	Pick Up PT./Time
CHP1 E-536 AXSUS ENTERPRISES		10/02	DAVID BERGQUIST	2	LOOKOUT ICP/0700	LOOKOUT ICP/2000
WTS1 E-374 M AND D		09/27	DEEZ JEFF	1	LOOKOUT ICP/0700	LOOKOUT ICP/2000
WTS2 E-69 SUZANNE FINE		09/24	DANIEL ROSS	1	LOOKOUT ICP/0700	LOOKOUT ICP/2000
WTS2 E-667 WTS2 - TIMBER TIPPER ENT. INC. - 363575		10/02	CHAD ASHBAUGH	1	LOOKOUT ICP/0700	LOOKOUT ICP/2000
WTS2 E-668 WTS2 - COASTAL RANGE FIRE SUPPORT LLC - 177286		10/02	SEAN BOEHLJE	1	LOOKOUT ICP/0700	LOOKOUT ICP/2000
SOFR O-715.99		09/30	RYDER JONES	1	LOOKOUT ICP/0700	LOOKOUT ICP/2000
SOFR(T) O-720		09/24	PATRICK ROMPORTL	1	LOOKOUT ICP/0700	LOOKOUT ICP/2000
E-36 FIRELINE (AMBO 303)		09/21	KYLE MEAD	2	LOOKOUT ICP/0700	LOOKOUT ICP/2000
O-762 MEDIC 228		09/27	KYLE KEMERER	1	LOOKOUT ICP/0700	LOOKOUT ICP/2000
O-233 RAT6		09/21	MIKE PLANETA	2	LOOKOUT ICP/0700	LOOKOUT ICP/2000
REAF O-591		09/19	NATE SEIVERS	1	LOOKOUT ICP/0700	LOOKOUT ICP/2000
REAF O-693		09/23	MARK LEIS	1	LOOKOUT ICP/0700	LOOKOUT ICP/2000
<b>6. Control Operations/Work Assignments:</b>						
<u>Task:</u> Prepare primary line from the handline north along 350 Rd. Hold primary line along the 320, 325, and 350 roads.						
<u>Purpose:</u> Hold fire spread south of the 320/325 road systems and minimize spread to the north.						
<u>End State:</u> Reduce impacts to HJ Andrews Experimental Station, other infrastructure, and natural resources.						
<b>7. Special Instructions:</b>						
Limit traffic on 1506 Rd. No traffic allowed past DP12 on the 1506 Rd. Limit traffic on the 1508 Rd. Coordinate activities with HJ Andrews Staff.						
<b>Needs:</b> ENG6 x 1; FMOD x 1; FELB x 2						
<b>8. Division/Group Communication Summary</b>						
Function	Channel	RX Frequency N/W	RX Tone/NAC	TX Frequency N/W	TX Tone/NAC	Mode
TACTICAL	SEE COM PLAN					
COMMAND	SEE COM PLAN					
<b>9. Prepared By (Resource Unit Leader)</b>		<b>Approved By (Planning Section Chief)</b>		<b>Date</b>	<b>Time</b>	
NICOLE LAGIOIA		MONICA RAMIREZ		09/18/2023	2000	

**Division/Group Assignment List (ICS 204 WF)**  
Controlled Unclassified Information//Basic

<b>1. Incident Name:</b>			<b>3.</b>			
BEDROCK LOOKOUT			<b>Branch:</b>		<b>Division/Group</b>	
<b>2. Operational Period:</b> DAY / NIGHT			I		L	
Date/Time From: 09/19/2023 0700 TUE	Date/Time To: 09/20/2023 0700 WED					
<b>4. Operations Personnel</b>						
<b>FIELD OPS</b>	TERRY WALTER DAN TRAPANESE (T)		<b>BRANCH DIRECTOR</b>		SAM TACCHINI JOSH VERELLEN (T)	
<b>AIR ATTACK SUPERVISOR</b>	JOE TONE		<b>DIVISION/GROUP SUPERVISOR</b>		DAREK PEPPELE (LWD 9/27) COLBEY RICHMOND (LWD 9/25) (T)	
<b>5. Resources Assigned this Period</b>						
Strike Team / Task Force / Resource Designator	LWD	Leader	Number Persons	Drop Off PT./Time	Pick Up PT./Time	
HEQB (T) O-568	09/19	SHANE ROWE	1	HOODOO FOB/0700	HOODOO FOB/2000	
FMOD O-709	09/23	STEVEN HAYTER	2	HOODOO FOB/0700	HOODOO FOB/2000	
IHC C-97 ROOSEVELT IHC	09/27	LARRY MONEY	20	HOODOO FOB/0700	HOODOO FOB/2000	
HC2IA C-95 BIG STATE WILDFIRE NCC 14D	09/24	MEKIAH STANSEL	20	HOODOO FOB/0700	HOODOO FOB/2000	
ENG3 E-625 UTUWF E321	09/24	KARL DELANGE	8	HOODOO FOB/0700	HOODOO FOB/2000	
ENG4 E-631 - OR-MHF - 421	09/25	MICHAEL L WHITAKER	4	HOODOO FOB/0700	HOODOO FOB/2000	
ENG6 E-506 TRI-STATE FIRE (BDRK)	09/29	STANLEY SMITH	3	HOODOO FOB/0700	HOODOO FOB/2000	
DZR2 E-26 GRIFFITH	09/25	MATT JAEGER	2	HOODOO FOB/0700	HOODOO FOB/2000	
FEL1 E-273 GUMPERT	09/25	CLINT GUMPERT	2	HOODOO FOB/0700	HOODOO FOB/2000	
FEL1 E-271 S5 LAND SERVICES	09/27	JOSH BARCUS	2	HOODOO FOB/0700	HOODOO FOB/2000	
CHP1 E-189 BRINK BROTHERS	09/25	FRENTON EDWARDS	3	HOODOO FOB/0700	HOODOO FOB/2000	
CHP1 E-555 MILLER TIMBER	09/29	TIM JONES	2	HOODOO FOB/0700	HOODOO FOB/2000	
CHP2 E-512 MARTY'S TREE SERVICE	09/21	JOSEPH ONEILL	3	HOODOO FOB/0700	HOODOO FOB/2000	
CHP2 E-620 DIAMOND ROAD MAINTENANCE	09/24	LAMAR MELTIN	3	HOODOO FOB/0700	HOODOO FOB/2000	
FORW E-343 MILLER	09/25	SCOTT KELLOGG	1	HOODOO FOB/0700	HOODOO FOB/2000	
FORW E-595 MILLER TIMBER SERVICES	09/21	SCOTT MCELHANEY	2	HOODOO FOB/0700	HOODOO FOB/2000	
WTS2 E-183 STAN HARLAN	09/30	ZANE WILSON	1	HOODOO FOB/0700	HOODOO FOB/2000	
WTS2 E-184 BEAR CREEK	09/28	JAY KRIDER	1	HOODOO FOB/0700	HOODOO FOB/2000	
WTS2 E-268 PARAGON WATER TENDERS	09/22	JOSH MICHELI	1	HOODOO FOB/0700	HOODOO FOB/2000	
<b>8. Division/Group Communication Summary</b>						
Function	Channel	RX Frequency N/W	RX Tone/NAC	TX Frequency N/W	TX Tone/NAC	Mode
TACTICAL	SEE COM PLAN					
COMMAND	SEE COM PLAN					
<b>9. Prepared By (Resource Unit Leader)</b>		<b>Approved By (Planning Section Chief)</b>		<b>Date</b>	<b>Time</b>	
NICOLE LAGIOIA		MONICA RAMIREZ		09/18/2023	2000	



**Division/Group Assignment List (ICS 204 WF)**  
Controlled Unclassified Information//Basic

<b>1. Incident Name:</b>			<b>3.</b>			
BEDROCK LOOKOUT			<b>Branch:</b>		<b>Division/Group</b>	
<b>2. Operational Period:</b> DAY / NIGHT			I		L	
Date/Time From: 09/19/2023 0700 TUE		Date/Time To: 09/20/2023 0700 WED				
<b>4. Operations Personnel</b>						
<b>FIELD OPS</b>		TERRY WALTER DAN TRAPANESE (T)		<b>BRANCH DIRECTOR</b> SAM TACCHINI JOSH VERELLEN (T)		
<b>AIR ATTACK SUPERVISOR</b>		JOE TONE		<b>DIVISION/GROUP SUPERVISOR</b> DAREK PEPPLER (LWD 9/27) COLBEY RICHMOND (LWD 9/25) (T)		
<b>5. Resources Assigned this Period</b>						
Strike Team / Task Force / Resource Designator		LWD	Leader	Number Persons	Drop Off PT./Time	Pick Up PT./Time
WTS2 E-288 HUGHES, PATRICK		09/26	GARY HUGHES	1	HOODOO FOB/0700	HOODOO FOB/2000
SOF2 O-636		09/20	TODD MOTT	1	HOODOO FOB/0700	HOODOO FOB/2000
E-3 AMBO 301		09/19	ETHAN BEIDERMAN	2	HOODOO FOB/0700	HOODOO FOB/2000
O-677 MEDIC 221		09/22	JACOB SMITH	1	HOODOO FOB/0700	HOODOO FOB/2000
O-234 H.A.R.T. (RAT 7)		09/21	RAUL RUIZ	2	HOODOO FOB/0700	HOODOO FOB/2000
O-675 EMT 108		09/23	STEPHAN BLASKOVICS	1	HOODOO FOB/0700	HOODOO FOB/2000
REAF O-591		09/19	NATE SEIVERS	1	HOODOO FOB/0700	HOODOO FOB/2000
REAF O-693		09/23	MARK LEIS	1	HOODOO FOB/0700	HOODOO FOB/2000
<b>6. Control Operations/Work Assignments:</b>						
<p><u>Task:</u> Complete construction and improvement of primary, alternate, and contingency lines. Check fire spread to the north in Deer Creek drainage. Monitor and check fire spread on Carpenter Mountain.</p> <p><u>Purpose:</u> Contain fire to the west of Deer Creek and south of identified primary lines to reduce potential for further fire growth.</p> <p><u>End State:</u> Fire is contained within identified primary lines. Impacts to natural resources and infrastructure are minimized.</p>						
<b>7. Special Instructions:</b>						
Contact DIVS prior to entry to reduce congestion on 1508 Rd.						
<b>Needs:</b> HEQB x 1; TFLD x 1; CHSL x 1						
<b>8. Division/Group Communication Summary</b>						
Function	Channel	RX Frequency N/W	RX Tone/NAC	TX Frequency N/W	TX Tone/NAC	Mode
TACTICAL	SEE COM PLAN					
COMMAND	SEE COM PLAN					
<b>9. Prepared By (Resource Unit Leader)</b>			<b>Approved By (Planning Section Chief)</b>		<b>Date</b>	<b>Time</b>
NICOLE LAGIOIA			MONICA RAMIREZ		09/18/2023	2000

**Division/Group Assignment List (ICS 204 WF)**  
Controlled Unclassified Information//Basic

<b>1. Incident Name:</b>			<b>3.</b>			
BEDROCK LOOKOUT			<b>Branch:</b>		<b>Division/Group</b>	
<b>2. Operational Period:</b> DAY / NIGHT			V		P	
Date/Time From: 09/19/2023 0700 TUE	Date/Time To: 09/20/2023 0700 WED					
<b>4. Operations Personnel</b>						
<b>FIELD OPS</b>		TERRY WALTER DAN TRAPANESE (T)		<b>BRANCH DIRECTOR</b>		THOM TAYLOR BRIAN BATES (T)
<b>AIR ATTACK SUPERVISOR</b>		JOE TONE		<b>DIVISION/GROUP SUPERVISOR</b>		MARK MUNOZ (LWD 9/21)
<b>5. Resources Assigned this Period</b>						
Strike Team / Task Force / Resource Designator		LWD	Leader	Number Persons	Drop Off PT./Time	Pick Up PT./Time
HEQB O-567		09/26	BART WILSON	1	HOODOO FOB/0700	HOODOO FOB/2000
HC2 C-88 MARLETTE PEAK CREW		09/21	ERIC ROUSSEL	22	HOODOO FOB/0700	HOODOO FOB/2000
ENG4 E-615 IDPAF E411		09/23	RIAN PRICE	3	HOODOO FOB/0700	HOODOO FOB/2000
ENG6 E-632 NCF-642		09/26	KELDON MARTIN	3	HOODOO FOB/0700	HOODOO FOB/2000
FORW E-607 AXSUS		09/22	BILL KLEIN	2	HOODOO FOB/0700	HOODOO FOB/2000
EXC2 E-614 FENTER LOGGING		09/24	PAUL FENTER	2	HOODOO FOB/0700	HOODOO FOB/2000
LOGL E-62 MARK JONES		10/01	ROLAND STRUM	2	HOODOO FOB/0700	HOODOO FOB/2000
LOGT E-646 EERA - WILDKAT TRUCKING		09/27	J. LANCE	1	HOODOO FOB/0700	HOODOO FOB/2000
WTS2 E-450 CHARLES E. IRELAND		09/26	CRAIG VEY	1	HOODOO FOB/0700	HOODOO FOB/2000
SOF1 O-715.12		09/27	MARK MUNNS	1	HOODOO FOB/0700	HOODOO FOB/2000
SOF2 O-636		09/20	TODD MOTT	1	HOODOO FOB/0700	HOODOO FOB/2000
E-341 AMBO 306		09/26	STEPHEN SPIGELMAN	2	HOODOO FOB/0700	HOODOO FOB/2000
O-251 MEDIC 213		09/21	BREIANAH PURINTON	1	HOODOO FOB/0700	HOODOO FOB/2000
O-680 EMT 120		09/23	TRAYSE RIGGLE	1	HOODOO FOB/0700	HOODOO FOB/2000
O-232 RAT 5		09/21	JEFF FARRIS	2	HOODOO FOB/0700	HOODOO FOB/2000
ARCH O-590		09/19	MOLLY KIRKPATRICK	1	HOODOO FOB/0700	HOODOO FOB/2000
REAF O-591		09/19	NATE SIEVERS	1	HOODOO FOB/0700	HOODOO FOB/2000
REAF O-693		09/23	MARK LEIS	1	HOODOO FOB/0700	HOODOO FOB/2000
<b>8. Division/Group Communication Summary</b>						
Function	Channel	RX Frequency N/W	RX Tone/NAC	TX Frequency N/W	TX Tone/NAC	Mode
TACTICAL	SEE COM PLAN					
COMMAND	SEE COM PLAN					
<b>9. Prepared By (Resource Unit Leader)</b>			<b>Approved By (Planning Section Chief)</b>		<b>Date</b>	<b>Time</b>
NICOLE LAGIOIA			MONICA RAMIREZ		09/18/2023	2000

**Division/Group Assignment List (ICS 204 WF)**  
Controlled Unclassified Information//Basic

<b>1. Incident Name:</b>				<b>3.</b>			
BEDROCK LOOKOUT				<b>Branch:</b>		<b>Division/Group</b>	
<b>2. Operational Period: DAY / NIGHT</b>				V		P	
Date/Time From: 09/19/2023 0700 TUE		Date/Time To: 09/20/2023 0700 WED					
<b>4. Operations Personnel</b>							
<b>FIELD OPS</b>		TERRY WALTER DAN TRAPANESE (T)		<b>BRANCH DIRECTOR</b>		THOM TAYLOR BRIAN BATES (T)	
<b>AIR ATTACK SUPERVISOR</b>		JOE TONE		<b>DIVISION/GROUP SUPERVISOR</b>		MARK MUNOZ (LWD 9/21)	
<b>6. Control Operations/Work Assignments:</b>							
<p><u>Task:</u> Continue patrol and mop up of primary control lines. Repair suppression damage as appropriate.  <u>Purpose:</u> Contain fire to the west of HWY 126 and south of HWY 20 to minimize fire impacts to values at risk and infrastructure.  <u>End State:</u> Fire is contained and impacts to values at risk and infrastructure along HWY 126 corridor are minimized.</p>							
<b>7. Special Instructions:</b>							
<b>Needs:</b>							
<b>8. Division/Group Communication Summary</b>							
Function	Channel	RX Frequency N/W	RX Tone/NAC	TX Frequency N/W	TX Tone/NAC	Mode	
TACTICAL	SEE COM PLAN						
COMMAND	SEE COM PLAN						
<b>9. Prepared By (Resource Unit Leader)</b>			<b>Approved By (Planning Section Chief)</b>			<b>Date</b>	<b>Time</b>
NICOLE LAGIOIA			MONICA RAMIREZ			09/18/2023	2000

**Division/Group Assignment List (ICS 204 WF)**  
Controlled Unclassified Information//Basic

<b>1. Incident Name:</b>			<b>3.</b>			
BEDROCK LOOKOUT			<b>Branch:</b>		<b>Division/Group</b>	
<b>2. Operational Period:</b> DAY / NIGHT			V		T	
Date/Time From: 09/19/2023 0700 TUE	Date/Time To: 09/20/2023 0700 WED					
<b>4. Operations Personnel</b>						
<b>FIELD OPS</b>	TERRY WALTER DAN TRAPANESE (T)		<b>BRANCH DIRECTOR</b>		THOM TAYLOR BRIAN BATES (T)	
<b>AIR ATTACK SUPERVISOR</b>	JOE TONE		<b>DIVISION/GROUP SUPERVISOR</b>		CAM CHAMBERS (LWD 9/27) KIP VAN DEWATER (LWD 10/1) (T)	
<b>5. Resources Assigned this Period</b>						
Strike Team / Task Force / Resource Designator	LWD	Leader	Number Persons	Drop Off PT./Time	Pick Up PT./Time	
HEQB O-728	09/25	JOSIAH FISCHER	1	HOODOO FOB/0700	HOODOO FOB/2000	
HEQB (T) O-729	09/25	DALLAS BUCK	1	HOODOO FOB/0700	HOODOO FOB/2000	
ENG3 E-265 ICE FIRE	09/21	TOM SCHAEFER	3	HOODOO FOB/0700	HOODOO FOB/2000	
ENG4 E-256 HI COUNTRY	10/02	CASEY FOX	3	HOODOO FOB/0700	HOODOO FOB/2000	
ENG3 E-451 J3 CONTRACTING (BDRK)	10/03	SEAN BODYKE	3	HOODOO FOB/0700	HOODOO FOB/2000	
ENG4 E-479 J3 CONTRACTING (BDRK)	10/04	STEWART NICHOLS	3	HOODOO FOB/0700	HOODOO FOB/2000	
FEL2 E-442 J & D LOGGING	10/01	DAN SWAN	2	HOODOO FOB/0700	HOODOO FOB/2000	
FORW E-608 EERA - AXSUS	09/24	KEITH DOUGHARITY	2	HOODOO FOB/0700	HOODOO FOB/2000	
LOGL E-240 NORTHWEST	09/27	BAIRD DRAGO	2	HOODOO FOB/0700	HOODOO FOB/2000	
SOF1 O-715.12	09/27	MARK MUNNS	1	HOODOO FOB/0700	HOODOO FOB/2000	
SOFC O-522	09/19	RICHARD HARNDEN	1	HOODOO FOB/0700	HOODOO FOB/2000	
O-678 MEDIC 223	09/23	BENJAMIN SHOLL	1	HOODOO FOB/0700	HOODOO FOB/2000	
O-824 MEDIC 230	09/30	DAVID STANTON	1	HOODOO FOB/0700	HOODOO FOB/2000	
REAF O-630	09/19	DAVID SANDERS	1	HOODOO FOB/0700	HOODOO FOB/2000	
REAF ARCH O-475	09/21	CAYLA KENNEDY	1	HOODOO FOB/0700	HOODOO FOB/2000	
ARCH O-590	09/19	MOLLY KIRKPATRICK	1	HOODOO FOB/0700	HOODOO FOB/2000	
REAF O-694	09/24	ROB TITCOMB	1	HOODOO FOB/0700	HOODOO FOB/2000	
O-832 EMT 124	10/01	DANIEL HILBERG	1	HOODOO FOB/0700	HOODOO FOB/2000	
<b>6. Control Operations/Work Assignments:</b>						
<b>8. Division/Group Communication Summary</b>						
Function	Channel	RX Frequency N/W	RX Tone/NAC	TX Frequency N/W	TX Tone/NAC	Mode
COMMAND	SEE COM PLAN					
TACTICAL	SEE COM PLAN					
<b>9. Prepared By (Resource Unit Leader)</b>		<b>Approved By (Planning Section Chief)</b>		<b>Date</b>	<b>Time</b>	
NICOLE LAGIOIA		MONICA RAMIREZ		09/18/2023	2000	

**Division/Group Assignment List (ICS 204 WF)**  
Controlled Unclassified Information//Basic

<b>1. Incident Name:</b>				<b>3.</b>			
BEDROCK LOOKOUT				<b>Branch:</b>		<b>Division/Group</b>	
<b>2. Operational Period: DAY / NIGHT</b>				V		T	
Date/Time From: 09/19/2023 0700 TUE		Date/Time To: 09/20/2023 0700 WED					
<b>4. Operations Personnel</b>							
<b>FIELD OPS</b>		TERRY WALTER DAN TRAPANESE (T)		<b>BRANCH DIRECTOR</b>		THOM TAYLOR BRIAN BATES (T)	
<b>AIR ATTACK SUPERVISOR</b>		JOE TONE		<b>DIVISION/GROUP SUPERVISOR</b>		CAM CHAMBERS (LWD 9/27) KIP VAN DEWATER (LWD 10/1) (T)	
<b>6. Control Operations/Work Assignments:</b>							
<p><u>Task:</u> Patrol, monitor and mop up any significant heat from DP110 to DP 78.  <u>Purpose:</u> Secure southern and eastern flank of fire.  <u>End State:</u> Stop southern and eastern progression of the Lookout Fire minimizing impacts to the HWY 126 corridor.</p>							
<b>7. Special Instructions:</b>							
S-826 Top Fill is located at the DP140 campground.							
<b>Needs:</b>							
<b>8. Division/Group Communication Summary</b>							
Function	Channel	RX Frequency NW	RX Tone/NAC	TX Frequency NW	TX Tone/NAC	Mode	
COMMAND	SEE COM PLAN						
TACTICAL	SEE COM PLAN						
<b>9. Prepared By (Resource Unit Leader)</b>			<b>Approved By (Planning Section Chief)</b>			<b>Date</b>	<b>Time</b>
NICOLE LAGIOIA			MONICA RAMIREZ			09/18/2023	2000

**Division/Group Assignment List (ICS 204 WF)**  
Controlled Unclassified Information//Basic

<b>1. Incident Name:</b>				<b>3.</b>		
BEDROCK LOOKOUT				Branch:  V	Division/Group  HORSE CREEK / POTHOLE	
<b>2. Operational Period: DAY / NIGHT</b>						
Date/Time From: 09/19/2023 0700 TUE		Date/Time To: 09/20/2023 0700 WED				
<b>4. Operations Personnel</b>						
<b>FIELD OPS</b>		TERRY WALTER DAN TRAPANESE (T)		<b>BRANCH DIRECTOR</b>		THOM TAYLOR BRIAN BATES (T)
<b>AIR ATTACK SUPERVISOR</b>		JOE TONE		<b>DIVISION/GROUP SUPERVISOR</b>		AMY MCCLAVE (LWD 9/25) CODY ST. CLAIR (LWD 9/27) (T)
<b>5. Resources Assigned this Period</b>						
Strike Team / Task Force / Resource Designator	LWD	Leader	Number Persons	Drop Off PT./Time	Pick Up PT./Time	
TFLD O-781	09/28	REBECCA FRY	1	HOODOO FOB/0700	HOODOO FOB/2000	
HEQB O-723	09/26	CHRIS COLT	1	HOODOO FOB/0700	HOODOO FOB/2000	
HEQB (T) O-650	09/20	JAZZ BEYUKA	1	HOODOO FOB/0700	HOODOO FOB/2000	
FELB O-665	09/20	KEVIN W FOSTER	1	HOODOO FOB/0700	HOODOO FOB/2000	
FMOD O-707 TIMBER TIPPER	09/23	NATE ZELLER	2	HOODOO FOB/0700	HOODOO FOB/2000	
FMOD O-495 GROUND ZERO TIMBER FALLERS	09/21	DAN PIHL	2	HOODOO FOB/0700	HOODOO FOB/2000	
HC2IA C-93 GRAYBACK 16B	09/20	ARIC COLEMAN	20	HOODOO FOB/0700	HOODOO FOB/2000	
*ENG3 E-621 GRAND RONDE 131	09/22	JIM STEWART PINDER	10	HOODOO FOB/0700	HOODOO FOB/2000	
*ENG6 E-366 AMERICAN	10/05	MATT MORRELL	3	HOODOO FOB/0700	HOODOO FOB/2000	
DZR2 E-266 KISER & KISER (BDRK)	09/24	CLIFF KISER	2	HOODOO FOB/0700	HOODOO FOB/2000	
EXC2 E-511 EVERY LIVESTOCK	09/30	TOM GREEN	2	HOODOO FOB/0700	HOODOO FOB/2000	
EXC4 E-434 AXSUS ENTERPRISES	10/02	ANGELA RICE	2	HOODOO FOB/0700	HOODOO FOB/2000	
SKD2 E-274 BRINK BROTHERS	09/29	KYLE PATTERSON	1	HOODOO FOB/0700	HOODOO FOB/2000	
FEL1 E-612 EERA - AXSUS	09/25	JACK MAREK	2	HOODOO FOB/0700	HOODOO FOB/2000	
FEL1 E-647 DUSTIN CHANTRY	09/28	DUSTIN CHANTRY	1	HOODOO FOB/0700	HOODOO FOB/2000	
FORW E-344 MILLER	10/01	EDDIE ORTIZ	2	HOODOO FOB/0700	HOODOO FOB/2000	
CHP1 E-537 ANVIL BUILDERS	09/27	JILLIAN FALGE	2	HOODOO FOB/0700	HOODOO FOB/2000	
LOGL E-351 MILLER	09/27	PAUL DOLLAR	2	HOODOO FOB/0700	HOODOO FOB/2000	
LOGT E-528 MARK JONES TRUCKING #3	09/19	CHAD BROWN	1	HOODOO FOB/0700	HOODOO FOB/2000	
LOGT E-646 EERA - WILDKAT TRUCKING	09/27	JODY LANCE	1	HOODOO FOB/0700	HOODOO FOB/2000	
<b>8. Division/Group Communication Summary</b>						
Function	Channel	RX Frequency N/W	RX Tone/NAC	TX Frequency N/W	TX Tone/NAC	Mode
TACTICAL	SEE COM PLAN					
COMMAND	SEE COM PLAN					
<b>9. Prepared By (Resource Unit Leader)</b>		<b>Approved By (Planning Section Chief)</b>		<b>Date</b>	<b>Time</b>	
NICOLE LAGIOIA		MONICA RAMIREZ		09/18/2023	2000	

**Division/Group Assignment List (ICS 204 WF)**  
Controlled Unclassified Information//Basic

<b>1. Incident Name:</b>			<b>3.</b>			
BEDROCK LOOKOUT			<b>Branch:</b>		<b>Division/Group</b>	
<b>2. Operational Period: DAY / NIGHT</b>			V		HORSE CREEK / POTHOLE	
Date/Time From: 09/19/2023 0700 TUE	Date/Time To: 09/20/2023 0700 WED					
<b>4. Operations Personnel</b>						
<b>FIELD OPS</b>		TERRY WALTER DAN TRAPANESE (T)		<b>BRANCH DIRECTOR</b>		THOM TAYLOR BRIAN BATES (T)
<b>AIR ATTACK SUPERVISOR</b>		JOE TONE		<b>DIVISION/GROUP SUPERVISOR</b>		AMY MCCLAVE (LWD 9/25) CODY ST. CLAIR (LWD 9/27) (T)
<b>5. Resources Assigned this Period</b>						
Strike Team / Task Force / Resource Designator		LWD	Leader	Number Persons	Drop Off PT./Time	Pick Up PT./Time
WTS2 E-29 PARAGON (BDRK)		09/24	COLLIN ANDREWS	1	HOODOO FOB/0700	HOODOO FOB/2000
SOF1 O-715.12		09/27	MARK MUNNS	1	HOODOO FOB/0700	HOODOO FOB/2000
SOF1 O-674		09/26	GARY STRICKLAND	1	HOODOO FOB/0700	HOODOO FOB/2000
E-468 AMB2 309		09/19	CHRIS HOWARD	2	HOODOO FOB/0700	HOODOO FOB/2000
O-825 MEDIC 231		09/30	LUKE EVERSOLE	1	HOODOO FOB/0700	HOODOO FOB/2000
O-54 RAT 4		09/25	RICK BOSTIAN	2	HOODOO FOB/0700	HOODOO FOB/2000
LEAD READ O-37		09/23	MONTE KUK	1	HOODOO FOB/0700	HOODOO FOB/2000
REAF ARCH O-475		09/21	CAYLA KENNEDY	1	HOODOO FOB/0700	HOODOO FOB/2000
REAF O-694		09/24	ROB TITCOMB	1	HOODOO FOB/0700	HOODOO FOB/2000
REAF O-630		09/19	DAVID SANDERS	1	HOODOO FOB/0700	HOODOO FOB/2000
REAF O-638		09/20	MARK RICHARDSON	1	HOODOO FOB/0700	HOODOO FOB/2000
<b>6. Control Operations/Work Assignments:</b>						
<u>Task:</u> Improve existing control features to secure the fire perimeter when and where it is safe to do so.						
<u>Purpose:</u> Increase containment to reduce impacts to private and public values at risk.						
<u>End State:</u> Fire is kept within current footprint and values at risk are protected.						
<b>7. Special Instructions:</b>						
*Denotes resources for Initial Attack (IA)						
<b>NEEDS:</b>						
<b>8. Division/Group Communication Summary</b>						
Function	Channel	RX Frequency N/W	RX Tone/NAC	TX Frequency N/W	TX Tone/NAC	Mode
TACTICAL	SEE COM PLAN					
COMMAND	SEE COM PLAN					
<b>9. Prepared By (Resource Unit Leader)</b>			<b>Approved By (Planning Section Chief)</b>		<b>Date</b>	<b>Time</b>
NICOLE LAGIOIA			MONICA RAMIREZ		09/18/2023	2000

**Division/Group Assignment List (ICS 204 WF)**  
Controlled Unclassified Information//Basic

<b>1. Incident Name:</b>			<b>3.</b>			
BEDROCK LOOKOUT			<b>Branch:</b>		<b>Division/Group</b>	
<b>2. Operational Period:</b> DAY / NIGHT			V		WHITE PINE	
Date/Time From: 09/19/2023 0700 TUE	Date/Time To: 09/20/2023 0700 WED					
<b>4. Operations Personnel</b>						
<b>FIELD OPS</b>		TERRY WALTER DAN TRAPANESE (T)		<b>BRANCH DIRECTOR</b>		THOM TAYLOR BRIAN BATES (T)
<b>AIR ATTACK SUPERVISOR</b>		JOE TONE		<b>DIVISION/GROUP SUPERVISOR</b>		JEFF COBURN (LWD 9/20) MATT ABELL (LWD 9/20) (T)
<b>5. Resources Assigned this Period</b>						
Strike Team / Task Force / Resource Designator		LWD	Leader	Number Persons	Drop Off PT./Time	Pick Up PT./Time
HEQB O-764		09/20	JEREMY JENSEN	1	HOODOO FOB/0700	HOODOO FOB/2000
HEQB (T) O-765		09/23	TYLER GREENBERG	1	HOODOO FOB/0700	HOODOO FOB/2000
DZR2 E-297 COUGAR RIDGE		09/26	DAVE OAKES	2	HOODOO FOB/0700	HOODOO FOB/2000
MBM1 E-94 ENGLE		09/21	JARED ENGLE	2	HOODOO FOB/0700	HOODOO FOB/2000
MBM1 E-229 MARK JONES		09/26	JESS CALVERT	2	HOODOO FOB/0700	HOODOO FOB/2000
FORW E-594 PONSSSE RUBBER - MILLER TIMBER SERVICES		09/27	CARSON DIXON	1	HOODOO FOB/0700	HOODOO FOB/2000
CHP1 E-538 ALBACH		09/27	NICK MIGNRON	2	HOODOO FOB/0700	HOODOO FOB/2000
CHP1 E-542 MOUNTAIN VIEW TREE		09/29	KAI ELROD	2	HOODOO FOB/0700	HOODOO FOB/2000
FEL1 E-236 MARK JONES		09/23	JAKE BROWN	2	HOODOO FOB/0700	HOODOO FOB/2000
FEL1 E-238 TJS PROCESSOR		09/29	TREVOR TAYER	2	HOODOO FOB/0700	HOODOO FOB/2000
FEL1 E-272 TJS		09/24	CHAD BELL	2	HOODOO FOB/0700	HOODOO FOB/2000
FEL1 E-280 BRINK BROTHERS BEDROCK		10/02	DAKOTA WELLS	2	HOODOO FOB/0700	HOODOO FOB/2000
FEL1 E-648 BFC LIMITED		09/28	SHERI ROTH	2	HOODOO FOB/0700	HOODOO FOB/2000
FEL2 E-173 WYEAST PROCESSOR (BDRK)		09/26	SETH BIERBOWER	2	HOODOO FOB/0700	HOODOO FOB/2000
FEL2 E-331 MARK JONES PROCESSOR		09/24	JAKE BROWN	2	HOODOO FOB/0700	HOODOO FOB/2000
WTS2 E-289 HUGHES, PATRICK		09/23	PATRICK HUGHES	1	HOODOO FOB/0700	HOODOO FOB/2000
WTS2 E-290 BIGFOOT		09/24	TALON MITCHELL	1	HOODOO FOB/0700	HOODOO FOB/2000
WTS2 E-323 THOMAS H. IRELAND (BDRK)		09/24	RYAN CHANDLER	1	HOODOO FOB/0700	HOODOO FOB/2000
SOF1 O-715.12		09/27	MARK MUNNS	1	HOODOO FOB/0700	HOODOO FOB/2000
SOFC O-522		09/19	RICHARD HARNDEN	1	HOODOO FOB/0700	HOODOO FOB/2000
<b>8. Division/Group Communication Summary</b>						
Function	Channel	RX Frequency N/W	RX Tone/NAC	TX Frequency N/W	TX Tone/NAC	Mode
TACTICAL	SEE COM PLAN					
COMMAND	SEE COM PLAN					
<b>9. Prepared By (Resource Unit Leader)</b>			<b>Approved By (Planning Section Chief)</b>		<b>Date</b>	<b>Time</b>
NICOLE LAGIOIA			MONICA RAMIREZ		09/18/2023	2000



## Division/Group Assignment List (ICS 204 WF)

Controlled Unclassified Information//Basic

<b>1. Incident Name:</b>				<b>3.</b>		
BEDROCK LOOKOUT				Branch:  V	Division/Group  WHITE PINE	
<b>2. Operational Period:</b> DAY / NIGHT						
Date/Time From: 09/19/2023 0700 TUE		Date/Time To: 09/20/2023 0700 WED				
<b>4. Operations Personnel</b>						
FIELD OPS		TERRY WALTER DAN TRAPANESE (T)		BRANCH DIRECTOR		THOM TAYLOR BRIAN BATES (T)
AIR ATTACK SUPERVISOR		JOE TONE		DIVISION/GROUP SUPERVISOR		JEFF COBURN (LWD 9/20) MATT ABELL (LWD 9/20) (T)
<b>5. Resources Assigned this Period</b>						
Strike Team / Task Force / Resource Designator		LWD	Leader	Number Persons	Drop Off PT./Time	Pick Up PT./Time
O-681 EMT121		09/23	LACY SINGHOSE	1	HOODOO FOB/0700	HOODOO FOB/2000
O-789 MEDIC 229		09/28	NATHAN DAVIS	1	HOODOO FOB/0700	HOODOO FOB/2000
REAF O-694		09/24	ROB TITCOMB	1	HOODOO FOB/0700	HOODOO FOB/2000
REAF O-630		09/19	DAVE SANDERS	1	HOODOO FOB/0700	HOODOO FOB/2000
<b>6. Control Operations/Work Assignments:</b>						
<p><u>Task:</u> Prepare indirect contingency line along the 2649, 265, and 2657 roads.</p> <p><u>Purpose:</u> To establish contingency line on the east side of the Lookout Fire.</p> <p><u>End State:</u> Contingency line is completed.</p>						
<b>7. Special Instructions:</b>						
<p><b>Needs:</b> CHP1 x 1; HC2 x 1</p>						
<b>8. Division/Group Communication Summary</b>						
Function	Channel	RX Frequency N/W	RX Tone/NAC	TX Frequency N/W	TX Tone/NAC	Mode
TACTICAL	SEE COM PLAN					
COMMAND	SEE COM PLAN					
<b>9. Prepared By (Resource Unit Leader)</b>			<b>Approved By (Planning Section Chief)</b>		<b>Date</b>	<b>Time</b>
NICOLE LAGIOIA			MONICA RAMIREZ		09/18/2023	2000

**Division/Group Assignment List (ICS 204 WF)**  
Controlled Unclassified Information//Basic

<b>1. Incident Name:</b>			<b>3.</b>			
BEDROCK LOOKOUT			<b>Branch:</b>		<b>Division/Group</b>	
<b>2. Operational Period:</b> DAY / NIGHT			PETE'S LAKE		PETE'S LAKE	
Date/Time From: 09/19/2023 0700 TUE		Date/Time To: 09/20/2023 0700 WED				
<b>4. Operations Personnel</b>						
<b>FIELD OPS</b>		TERRY WALTER DAN TRAPANESE (T)		<b>BRANCH DIRECTOR</b>		REGGIE BRAY
<b>AIR ATTACK SUPERVISOR</b>		JOE TONE		<b>DIVISION/GROUP SUPERVISOR</b>		JAMES HONANIE CHRIS BURFORD (T)
<b>5. Resources Assigned this Period</b>						
Strike Team / Task Force / Resource Designator		LWD	Leader	Number Persons	Drop Off PT./Time	Pick Up PT./Time
TFLD O-93 (PETE)		09/21	FRANK GOODSON	1	WINOGA SPIKE/0700	WINOGA SPIKE/2000
TFLD (T) O-94 (PETE)		09/22	JUSTIN DAVIES	1	WINOGA SPIKE/0700	WINOGA SPIKE/2000
HEQB O-105 (PETE)		09/28	TODD BOWERS	1	WINOGA SPIKE/0700	WINOGA SPIKE/2000
IHC C-94 LA GRANDE IHC		09/21	CHUY ELGUEZABAL	24	WINOGA SPIKE/0700	WINOGA SPIKE/2000
IHC C-96 CRW1 - LOGAN IHC		09/28	ERIC LANDRETH	22	WINOGA SPIKE/0700	WINOGA SPIKE/2000
WTT2 E-104 TUB SPRINGS (PETE)		09/21	LARRY	1	WINOGA SPIKE/0700	WINOGA SPIKE/2000
*DOZ2 L/L 230 (PETE)			DAN LERMAN	1	WINOGA SPIKE/0700	WINOGA SPIKE/2000
*DOZ2 L/L 231			DAN HAUSWOLD	1	WINOGA SPIKE/0700	WINOGA SPIKE/2000
ENG6 E110 PATRICK (PETE)		10/01	PAUL RAMPININI	3	WINOGA SPIKE/0700	WINOGA SPIKE/2000
ENG6 E-111 PATRICK (PETE)		10/01	ONASIS ADAME	3	WINOGA SPIKE/0700	WINOGA SPIKE/2000
ENG6 E-112 PATRICK (PETE)		10/01	DICK SYPHERS	3	WINOGA SPIKE/0700	WINOGA SPIKE/2000
ENG6 E-113 WOODPECKER (PETE)		10/01	ALEX WOLFF	3	WINOGA SPIKE/0700	WINOGA SPIKE/2000
ENG6 E-114 STEELHEAD ENTERPRISES (PETE)		10/01	JOHN TALOR	3	WINOGA SPIKE/0700	WINOGA SPIKE/2000
ENG6 E-115 TERRENCE TITUS (PETE)		09/25	THOMAS HILTON	3	WINOGA SPIKE/0700	WINOGA SPIKE/2000
SOF2 O-826		10/02	QUINCY CHUNG	1	WINOGA SPIKE/0700	WINOGA SPIKE/2000
E-76 AMBO 311		09/21	SAM NAKASHINI	2	WINOGA SPIKE/0700	WINOGA SPIKE/2000
O-55 REMS1		09/28	JOHN MEREDITH	4	WINOGA SPIKE/0700	WINOGA SPIKE/2000
O-62 EMT 125		09/21	JENNIFER CUDNIK	1	WINOGA SPIKE/0700	WINOGA SPIKE/2000
<b>8. Division/Group Communication Summary</b>						
Function	Channel	RX Frequency NW	RX Tone/NAC	TX Frequency NW	TX Tone/NAC	Mode
TACTICAL	SEE COMM PLAN					
COMMAND	SEE COMM PLAN					
<b>9. Prepared By (Resource Unit Leader)</b>			<b>Approved By (Planning Section Chief)</b>		<b>Date</b>	<b>Time</b>
NICOLE LAGIOIA			MONICA RAMIREZ		09/18/2023	2000

## Division/Group Assignment List (ICS 204 WF)

Controlled Unclassified Information//Basic

<b>1. Incident Name:</b>				<b>3.</b>			
BEDROCK LOOKOUT				<b>Branch:</b>		<b>Division/Group</b>	
<b>2. Operational Period:</b> <b>DAY / NIGHT</b>				<b>PETE'S LAKE</b>		<b>PETE'S LAKE</b>	
Date/Time From: 09/19/2023 0700            TUE		Date/Time To: 09/20/2023 0700            WED					
<b>4. Operations Personnel</b>							
<b>FIELD OPS</b>		TERRY WALTER DAN TRAPANESE (T)		<b>BRANCH DIRECTOR</b>		REGGIE BRAY	
<b>AIR ATTACK SUPERVISOR</b>		JOE TONE		<b>DIVISION/GROUP SUPERVISOR</b>		JAMES HONANIE CHRIS BURFORD (T)	
<b>6. Control Operations/Work Assignments:</b>							
<p>Task: Continue preparation of shaded fuel break along Cascade Lakes Highway. Implement pump/hose/sprinkler systems in accordance with the Pete's Lake Structure Protection Plan.</p> <p>Purpose: To prevent the spread of fire east of the highway and to protect values at risk including infrastructure, scenic corridor, resorts, and recreation property.</p> <p>End State: A secure holding feature that provides scenic value and fire resilience to the entities along the Cascade Lakes Highway.</p>							
<b>7. Special Instructions:</b>							
<b>8. Division/Group Communication Summary</b>							
Function	Channel	RX Frequency N/W	RX Tone/NAC	TX Frequency N/W	TX Tone/NAC	Mode	
TACTICAL	SEE COMM PLAN						
COMMAND	SEE COMM PLAN						
<b>9. Prepared By (Resource Unit Leader)</b>			<b>Approved By (Planning Section Chief)</b>			<b>Date</b>	<b>Time</b>
NICOLE LAGIOIA			MONICA RAMIREZ			09/18/2023	2000

## Division/Group Assignment List (ICS 204 WF)

Controlled Unclassified Information//Basic

<b>1. Incident Name:</b>				<b>3.</b>		
BEDROCK LOOKOUT				<b>Branch:</b>	<b>Division/Group</b>	
<b>2. Operational Period: DAY / NIGHT</b>						
Date/Time From: 09/19/2023 0700 TUE		Date/Time To: 09/20/2023 0700 WED		LOOKOUT STAGING		
<b>4. Operations Personnel</b>						
<b>FIELD OPS</b>	TERRY WALTER DAN TRAPANESE (T)			<b>BRANCH DIRECTOR</b>		
<b>AIR ATTACK SUPERVISOR</b>	JOE TONE			<b>STAGING AREA MANAGER</b>		TODD GRIFFIN
<b>5. Resources Assigned this Period</b>						
Strike Team / Task Force / Resource Designator	LWD	Leader	Number Persons	Drop Off PT./Time	Pick Up PT./Time	
DZR2 E-394 DEREK CECILIANI	09/19	DEREK CECILIANI	2	LOOKOUT ICP/0700	LOOKOUT ICP/2000	
SKD2 E-232 ROBERT S MURRAY (BDRK)	10/01	ANNA TITUS	2	LOOKOUT ICP/0700	LOOKOUT ICP/2000	
FORW E-506 AXSUS ENTERPRISES (BDRK)	09/17	JUSTIN MUTCHLER	2	LOOKOUT ICP/0700	LOOKOUT ICP/2000	
MBM1 E-231 JUSTIN PITTS	09/19	JW BURNS	2	LOOKOUT ICP/0700	LOOKOUT ICP/2000	
MBM1 E-225 STATEWIDE	09/29	CEDRIC HAYDEN	2	LOOKOUT ICP/0700	LOOKOUT ICP/2000	
MBM1 E-227 STATEWIDE	09/25	NICK JUAREZ	2	LOOKOUT ICP/0700	LOOKOUT ICP/2000	
MBM2 E-454 J & D (BDRK)	09/20	EDWARD DAVIS	2	LOOKOUT ICP/0700	LOOKOUT ICP/2000	
LOGP E-507 AXSUS ENTERPRISES (BDRK)	09/24	WADE RAINBOLT	2	LOOKOUT ICP/0700	LOOKOUT ICP/2000	
LOGL E-513 BRINK BROTHERS (BDRK)	09/23	BRIAN WHITE	2	LOOKOUT ICP/0700	LOOKOUT ICP/2000	
LOGT E-509 MARK JONES TRUCKING (BDRK)	09/22	TREVOR TRIMBLE	1	LOOKOUT ICP/0700	LOOKOUT ICP/2000	
LOGT E-527 MARK JONES TRUCKING 2	09/30	TERRY LEWIS	1	LOOKOUT ICP/0700	LOOKOUT ICP/2000	
<b>6. Control Operations/Work Assignments:</b>						
Achieve efficiency with heavy equipment at Lookout Staging. Determine needs and right size for Lookout Staging area with equipment needed to achieve the best outcome for fire control objectives. Prepare Strube Flats for Willamette National Forest log decking.						
<b>7. Special Instructions:</b>						
Resources report to Lookout Staging 0800 each day. Staging resources need to monitor Command Channel.						
<b>8. Division/Group Communication Summary</b>						
Function	Channel	RX Frequency N/W	RX Tone/NAC	TX Frequency N/W	TX Tone/NAC	Mode
TACTICAL	SEE COM PLAN					
COMMAND	SEE COM PLAN					
<b>9. Prepared By (Resource Unit Leader)</b>			<b>Approved By (Planning Section Chief)</b>		<b>Date</b>	<b>Time</b>
NICOLE LAGIOIA			MONICA RAMIREZ		09/18/2023	2000

**Division/Group Assignment List (ICS 204 WF)**  
Controlled Unclassified Information//Basic

<b>1. Incident Name:</b>			<b>3.</b>			
BEDROCK LOOKOUT			<b>Branch:</b>		<b>Division/Group</b>	
<b>2. Operational Period:</b> DAY / NIGHT			<b>NIGHT</b>			
Date/Time From: 09/19/2023 0700 TUE	Date/Time To: 09/20/2023 0700 WED					
<b>4. Operations Personnel</b>						
<b>FIELD OPS</b>		TERRY WALTER DAN TRAPANESE (T)	<b>BRANCH DIRECTOR</b>			
			<b>DIVISION/GROUP SUPERVISOR</b>			
			THAD NIEBEL (LWD 9/27) GARY CROMBIE (LWD 9/26) (T)			
<b>5. Resources Assigned this Period</b>						
Strike Team / Task Force / Resource Designator	LWD	Leader	Number Persons	Drop Off PT./Time	Pick Up PT./Time	
TFLD O-576	09/20	RENE VELAZQUEZ	1	HOODOO FOB/1900	HOODOO FOB/0700	
TFLD (T) O-698	09/23	JACOB OSSOWSKI	1	HOODOO FOB/1900	HOODOO FOB/0700	
ENG3 E-164 J3 CONTRACTING (BDRK)	10/05	SHAWN MODICA	3	HOODOO FOB/1900	HOODOO FOB/0700	
ENG3 E-300 HEK JONES	09/26	GEARLD COATS	3	HOODOO FOB/1900	HOODOO FOB/0700	
ENG6 E-661 FIRST STRIKE	10/01	JOSHUA MIKACEVICH	3	HOODOO FOB/1900	HOODOO FOB/0700	
ENG6 E-663 FIRST STRIKE	10/01	GERALD COATS	3	HOODOO FOB/1900	HOODOO FOB/0700	
LOGL E-21 J & D	09/21	LJ SANOWSKI	2	HOODOO FOB/1900	HOODOO FOB/0700	
LOGL E-22 J & D	09/19	SAWYER LOGAN	2	HOODOO FOB/1900	HOODOO FOB/0700	
LOGL E-61 MARK JONES	09/20	MARK HELLENTHAL	2	HOODOO FOB/1900	HOODOO FOB/0700	
LOGL E-241 NORTHWEST	09/23	LEO MILLER	2	HOODOO FOB/1900	HOODOO FOB/0700	
LOGL E-352 BRINKS	09/21	CRAIG BRINK	2	HOODOO FOB/1900	HOODOO FOB/0700	
LOGL E-353 BRINK	09/25	JASON LARSON	2	HOODOO FOB/1900	HOODOO FOB/0700	
LOGL E-354 BRINK	10/02	ROBERT KRUMP	2	HOODOO FOB/1900	HOODOO FOB/0700	
LOGT E-355 MILLER	09/30	JACOB WEELEREYER	1	HOODOO FOB/1900	HOODOO FOB/0700	
LOGT E-356 MILLER	09/27	CARI DICHTER	1	HOODOO FOB/1900	HOODOO FOB/0700	
LOGT E-358 BRINK BROTHERS	09/20	WILLY DYSERT	1	HOODOO FOB/1900	HOODOO FOB/0700	
LOGT E-472 MARK JONES	09/28	TOM DEEDON	1	HOODOO FOB/1900	HOODOO FOB/0700	
LOGT E-508 BRINK BROTHERS (BDRK)	09/30	MARK BRINK	2	HOODOO FOB/1900	HOODOO FOB/0700	
LOGT E-522 MARK JONES TRUCKING	09/30	GREG ALFRIEDO	1	HOODOO FOB/1900	HOODOO FOB/0700	
LOGT E-523 MARK JONES TRUCKING (BDRK)	09/30	MICAH JOHNSON	1	HOODOO FOB/1900	HOODOO FOB/0700	
LOGT E-610 OMALLEY BROTHERS	09/23	NICK PEREZ	1	HOODOO FOB/1900	HOODOO FOB/0700	
LOGT E-616 EERA - DEAN INNOVATIONS	09/23	BRETT LEE	1	HOODOO FOB/1900	HOODOO FOB/0700	
<b>8. Division/Group Communication Summary</b>						
Function	Channel	RX Frequency NW	RX Tone/NAC	TX Frequency NW	TX Tone/NAC	Mode
TACTICAL	SEE COM PLAN					
COMMAND	SEE COM PLAN					
<b>9. Prepared By (Resource Unit Leader)</b>		<b>Approved By (Planning Section Chief)</b>		<b>Date</b>	<b>Time</b>	
NICOLE LAGIOIA		MONICA RAMIREZ		09/18/2023	2000	

**Division/Group Assignment List (ICS 204 WF)**  
Controlled Unclassified Information//Basic

<b>1. Incident Name:</b>				<b>3.</b>		
BEDROCK LOOKOUT				<b>Branch:</b>		<b>Division/Group</b>
<b>2. Operational Period: DAY / NIGHT</b>				<b>NIGHT</b>		
Date/Time From: 09/19/2023 0700 TUE		Date/Time To: 09/20/2023 0700 WED				
<b>4. Operations Personnel</b>						
<b>FIELD OPS</b>		TERRY WALTER DAN TRAPANESE (T)		<b>BRANCH DIRECTOR</b>		
				<b>DIVISION/GROUP SUPERVISOR</b>		
				THAD NIEBEL (LWD 9/27) GARY CROMBIE (LWD 9/26) (T)		
<b>5. Resources Assigned this Period</b>						
Strike Team / Task Force / Resource Designator		LWD	Leader	Number Persons	Drop Off PT./Time	Pick Up PT./Time
LOGT E-617 EERA - DEAN INNOVATIONS		09/24	STEPHEN ROGERS	1	HOODOO FOB/1900	HOODOO FOB/0700
LOGT E-618 EERA - DEAN INNOVATIONS		09/24	JUSTIN LUCHT	1	HOODOO FOB/1900	HOODOO FOB/0700
LOGT E-619 DEAN INNOVATIONS		09/23	DAVID LUCHT	1	HOODOO FOB/1900	HOODOO FOB/0700
LOGT E-676					HOODOO FOB/1900	HOODOO FOB/0700
LOGT E-677 MARK JONES				1	HOODOO FOB/1900	HOODOO FOB/0700
LOGT E-678 MILLER TIMBER SERVICES		10/02	EARL RAINEY	1	HOODOO FOB/1900	HOODOO FOB/0700
SOF2 O-588		09/26	DAVID HADE	1	HOODOO FOB/1900	HOODOO FOB/0700
E-173 AMBO 304		09/27	RUSSELL LONG- THOMPSON	2	HOODOO FOB/1900	HOODOO FOB/0700
O-678 MEDIC 224		09/23	ALEX PIZZONIA	1	HOODOO FOB/1900	HOODOO FOB/0700
O-682 EMT 122		09/23	ETHAN JARRETT	1	HOODOO FOB/1900	HOODOO FOB/0700
O-763 EMT 123		09/27	IAN ROY	1	HOODOO FOB/1900	HOODOO FOB/0700
O-734 MEDIC 227		09/27	JES TEWS	1	HOODOO FOB/1900	HOODOO FOB/0700
<b>6. Control Operations/Work Assignments:</b>						
<p><u>Task</u> :Assist preparing lines within McRae Creek along 320 Road. Continue to patrol and monitor Horse Creek, Pothole, Division A/C, Division H, Division L, Division P, and Division T.</p> <p><u>Purpose</u>: To establish primary and alternate containment lines. Safely mop-up areas of heat to maintain containment.</p> <p><u>End State</u>: Maintain fire within established primary containment lines.</p>						
<b>7. Special Instructions:</b>						
<b>NEEDS:</b> LOGT x 2						
<b>8. Division/Group Communication Summary</b>						
Function	Channel	RX Frequency N/W	RX Tone/NAC	TX Frequency N/W	TX Tone/NAC	Mode
TACTICAL	SEE COM PLAN					
COMMAND	SEE COM PLAN					
<b>9. Prepared By (Resource Unit Leader)</b>			<b>Approved By (Planning Section Chief)</b>		<b>Date</b>	<b>Time</b>
NICOLE LAGIOIA			MONICA RAMIREZ		09/18/2023	2000

## Division/Group Assignment List (ICS 204 WF)

Controlled Unclassified Information//Basic

<b>1. Incident Name:</b>				<b>3.</b>		
BEDROCK LOOKOUT				<b>Branch:</b>	<b>Division/Group</b>	
<b>2. Operational Period: DAY / NIGHT</b>						
Date/Time From: 09/19/2023 0700 TUE		Date/Time To: 09/20/2023 0700 WED		ROADS BEDROCK NORTH		
<b>4. Operations Personnel</b>						
<b>FIELD OPS</b>		TERRY WALTER DAN TRAPANESE (T)		<b>BRANCH DIRECTOR</b>		
<b>AIR ATTACK SUPERVISOR</b>		JOE TONE		<b>GROUP SUPERVISOR</b>		DUANE CHATHAM
<b>5. Resources Assigned this Period</b>						
Strike Team / Task Force / Resource Designator		LWD	Leader	Number Persons	Drop Off PT./Time	Pick Up PT./Time
GRD2 E-503 PORTABLE ROCK		09/23	JIMMY POWELL	2	LOOKOUT ICP/0700	LOOKOUT ICP/2000
VROL E-471 DEAN INNOVATIONS		10/01	KELLY	1	LOOKOUT ICP/0700	LOOKOUT ICP/2000
WTS2 E-129 WARREN KIRK PARTRIDGE (BDRK)		09/28	KIM	1	LOOKOUT ICP/0700	LOOKOUT ICP/2000
WTS2 E-373 SIREN		09/21	ZACH	1	LOOKOUT ICP/0700	LOOKOUT ICP/2000
<b>6. Control Operations/Work Assignments:</b>						
Working on road 1817						
<b>7. Special Instructions:</b>						
This work is to insure safe travel for personnel and to protect the road's integrity.						
Resources should utilize the Comm Plan for area working.						
<b>8. Division/Group Communication Summary</b>						
Function	Channel	RX Frequency N/W	RX Tone/NAC	TX Frequency N/W	TX Tone/NAC	Mode
TACTICAL	SEE COMM PLAN					
COMMAND	SEE COMM PLAN					
<b>9. Prepared By (Resource Unit Leader)</b>			<b>Approved By (Planning Section Chief)</b>		<b>Date</b>	<b>Time</b>
NICOLE LAGIOIA			MONICA RAMIREZ		09/18/2023	2000

**Division/Group Assignment List (ICS 204 WF)**  
Controlled Unclassified Information//Basic

<b>1. Incident Name:</b>			<b>3.</b>			
BEDROCK LOOKOUT			<b>Branch:</b>		<b>Division/Group</b>	
<b>2. Operational Period: DAY / NIGHT</b>					ROADS BEDROCK SOUTH	
Date/Time From: 09/19/2023 0700 TUE		Date/Time To: 09/20/2023 0700 WED				
<b>4. Operations Personnel</b>						
<b>FIELD OPS</b>		TERRY WALTER DAN TRAPANESE (T)		<b>BRANCH DIRECTOR</b>		
<b>AIR ATTACK SUPERVISOR</b>		JOE TONE		<b>GROUP SUPERVISOR</b>		DUANE CHATHAM
<b>5. Resources Assigned this Period</b>						
Strike Team / Task Force / Resource Designator		LWD	Leader	Number Persons	Drop Off PT./Time	Pick Up PT./Time
GRD1 E-484 TABLE MOUNTAIN FORESTRY **R&R 18/19**		10/03	JUSTIN CODY	1	LOOKOUT ICP/0700	LOOKOUT ICP/2000
VROL E-524 EERA - BFC LIMITED7 (BDRK) **R&R 18/19**		10/03	KELLEY THORNE	1	LOOKOUT ICP/0700	LOOKOUT ICP/2000
WTS2 E-472 OUTLAW WILDLAND SRV (BDRK) **R&R 18/19**		10/03	THOMAS SMALL	1	LOOKOUT ICP/0700	LOOKOUT ICP/2000
WTS2 E-473 LEE ROY BELLOIR & SONS (BDRK) **R&R 18/19**		10/03	RANDY BELLIOR	1	LOOKOUT ICP/0700	LOOKOUT ICP/2000
DUMP E-496 RUSSELLS MANAGEMENT (BDRK)		09/26	AUSTIN WILEY	1	LOOKOUT ICP/0700	LOOKOUT ICP/2000
DUMP E-497 RUSSELLS MANAGEMENT (BDRK)		09/26	KEEGAN CUNNINGHAM	1	LOOKOUT ICP/0700	LOOKOUT ICP/2000
BHOE E-498 AXSUS ENTERPRISES -		09/21	PETER MCANERIN	2	LOOKOUT ICP/0700	LOOKOUT ICP/2000
BHOE E-499 AXSUS ENTERPRISES		09/24	DAN GARLAND	2	LOOKOUT ICP/0700	LOOKOUT ICP/2000
<b>6. Control Operations/Work Assignments:</b>						
R&R Sept. 18 & 19.						
<b>7. Special Instructions:</b>						
This work is to insure safe travel and to protect the integrity of the roadway.						
Resources should utilize the Comm Plan for area working.						
<b>8. Division/Group Communication Summary</b>						
Function	Channel	RX Frequency N/W	RX Tone/NAC	TX Frequency N/W	TX Tone/NAC	Mode
TACTICAL	SEE COMM PLAN					
COMMAND	SEE COMM PLAN					
<b>9. Prepared By (Resource Unit Leader)</b>		<b>Approved By (Planning Section Chief)</b>		<b>Date</b>	<b>Time</b>	
NICOLE LAGIOIA		MONICA RAMIREZ		09/18/2023	2000	



**Division/Group Assignment List (ICS 204 WF)**  
Controlled Unclassified Information//Basic

<b>1. Incident Name:</b>			<b>3.</b>			
BEDROCK LOOKOUT			Branch:		Division/Group	
<b>2. Operational Period: DAY / NIGHT</b>					<b>ROADS LOOKOUT</b>	
Date/Time From: 09/19/2023 0700 TUE			Date/Time To: 09/20/2023 0700 WED			
<b>4. Operations Personnel</b>						
<b>FIELD OPS</b>		TERRY WALTER DAN TRAPANESE (T)		<b>BRANCH DIRECTOR</b>		
<b>AIR ATTACK SUPERVISOR</b>		JOE TONE		<b>GROUP SUPERVISOR</b>		DUANE CHATHAM
<b>5. Resources Assigned this Period</b>						
Strike Team / Task Force / Resource Designator		LWD	Leader	Number Persons	Drop Off PT./Time	Pick Up PT./Time
GRD1 E-391 GRANITE		09/26	GRANT BEMIS	2	LOOKOUT ICP/0700	LOOKOUT ICP/2000
WTS2 E-427 BLISS FD 93403		09/23	TAYLOR PTERSON	1	LOOKOUT ICP/0700	LOOKOUT ICP/2000
GWT1 E-460 EERA - WICKIZER ENTERPRISES			**SEE CHECKIN**		LOOKOUT ICP/0700	LOOKOUT ICP/2000
WTS2 E-513 RUNDELL		09/27	SAM TILFORD	1	LOOKOUT ICP/0700	LOOKOUT ICP/2000
WTS2 E-522 T DICKSON TRUCKING		09/23	TROY DICKSON	1	LOOKOUT ICP/0700	LOOKOUT ICP/2000
<b>6. Control Operations/Work Assignments:</b>						
Working on Roads 15 & 1506						
<b>7. Special Instructions:</b>						
Resources should utilize the Comm Plan for area working.						
<b>8. Division/Group Communication Summary</b>						
Function	Channel	RX Frequency N/W	RX Tone/NAC	TX Frequency N/W	TX Tone/NAC	Mode
COMMAND	SEE COMM PLAN					
TACTICAL	SEE COMM PLAN					
<b>9. Prepared By (Resource Unit Leader)</b>			<b>Approved By (Planning Section Chief)</b>		<b>Date</b>	<b>Time</b>
NICOLE LAGIOIA			MONICA RAMIREZ		09/18/2023	2000

## AIR OPERATIONS SUMMARY ICS-220

Incident Name / Number Lookout/Bedrock	Sunrise 0656	Pumpkin 1945	Sunset 1915	Time Prepared 1700	Date Prepared 9/18/23	Prepared By <i>Kyle Stump</i>
---	-----------------	-----------------	----------------	-----------------------	--------------------------	----------------------------------

**General Remarks, Safety Notes, Hazards, Air Operations Special Equipment, etc.**  
 \* Be aware of retardant avoidance areas, 300ft away from waterways and bodies of water.  
 \* Sanitize Buckets before changing water sources.  
 \* All GPS is to be collected in DD's MMM,MMM'  
 \*Be cognizant of all overhead and environmental hazards while working with Aircraft.  
 \*Clear drop area/line before initiating drop sequence.  
 \*Avoid power lines near Trail Bridge Dip site.  
 \*Order All Aircraft through ATGS or Lookout Helibase  
 \*Saniam Junction Airport (853) Is closed.  
 Lookout costs to: lookouthelibase@gmail.com / Saniam costs to: saniam\_helibase2023@gmail.com

### Incident Frequencies

Incident Name	RX	Tone	TX	Tone	AM/FM	Position	Name	Phone	EQUIPMENT/SUPPLIES
Lookout A/A (TFR)	118.0750				AM	AOBD	Cory Dolberry	509-668-2801	Lookout Helibase Trailer E-176
A/A Rotor	120.0750				AM	AOBD-T	Kyle Stump	208-816-3141	Lookout Water Tenders E-67 E-458
A/A Briefing/Handoff	135.2000				AM				Saniam Helibase Trailer E-41
Lookout A/G primary	167.0625		167.0625		FM	HEBM	(Sun River) Greg Scully	907-240-4660	Saniam Helibase Trailer E-80
Lookout A/G secondary	169.2000		169.2000		FM	HEBM	(Lookout) Jason Brooks	907-482-0738	Saniam Handwash E-133
A/G Tactical Firing	171.1125		171.1125		FM	HEBM-T	(Lookout) Ty Gilstrap	928-215-5621	Saniam Water Tenders E-316 E-449
DECK Lookout/Sun River	168.3500		168.3500		FM	HEBM	(Saniam) Ben Crittenden	775-401-1198	Saniam Water Tenders E-67 E-450
TOLC Lookout/Sun River	164.8625		164.8625		FM	HEBM-T	(Saniam) Kate Millich		Lookout Holsy E-60
Bedrock A/A TFR	123.4000				AM				Lookout Holsy Driver E-657
A/A Rotor	118.1250				AM	ATGS	Joe Tone	360-518-6266	
Bedrock A/G Primary	172.4625		172.4625		FM				Helivell E-236
DECK Saniam	163.1000		163.1000		FM	UASP(lead)	Joe Don Morton	907-388-1050	
TOLC Saniam	168.3375		168.3375		FM	UAO	Nick White	541-520-5968	
Pete's Lake A/A (TFR)	134.8500		134.8500		AM				
Pete's Lake A/G	164.7750		164.7750		FM				
IA A/G White ODF	151.3100		156.7		FM				
IA A/G 50 USFS	168.2875		168.2875		FM				
AIR GUARD	168.6250		168.6250		FM				

### HELICOPTERS Lookout Helibase

FAA #	TYPE	Make/Model	Helibase	Start	Avail	Remarks	FAA #	TYPE	Make/Model	Helibase	Start	Avail	Remarks
N947CH	1	CH-47	Lookout	0700	0800	Bucket	N170CB	1	K-MAX	Saniam	0700	0800	Bucket
N562AJ	1	CH-47	Lookout	0700	0800	Tanked	N368EV	1	AS332L1	Saniam	0700	0800	Bucket
N614HH	3	AS350B3	Lookout	0700	0800	Recon, Bucket	N27HX	3	Bell 407	Saniam	0700	0800	Recon, Bucket
N38HX	3	AS350B3E	Lookout	0700	0800	Short-haul - GACC Prepo	HELICOPTERS Sun River Helibase						
							FAA #	TYPE	Make/Model	Helibase	Start <td>Avail</td> <td>Remarks</td>	Avail	Remarks
							N944H	3	Bell 407	Sun River	0800	0830	Recon, Bucket
							N68EC	2	Bell 205++	Sun River	0800	0830	Bucket
							N16920	2	Bell 212	Sun River	0800	0830	Bucket
							N767NA	1	Kmax	Sun River	0800	0830	Bucket

### UAS

Call Sign	Type	Make/Model	Base	Start	Avail	Remarks	FAA #	Call Sign	Make/Model	Base	Start	Avail	Remarks
UR 35			BR1			IR, Firing	N844CH	Lookout A/A	AC 690B	RDM	0800	0900	Redmond Airport

### FIXED WING AA/H/ICO

FAA #	TYPE	Make/Model	Helibase	Start	Avail	Remarks
N844CH	Lookout A/A	AC 690B	RDM	0800	0900	Redmond Airport

**INCIDENT RADIO COMMUNICATIONS  
PLAN (ICS 205)**

Incident Name

**Lookout**

Date/Time Prepared

9/18/2023 1900

Operational Period Date/Time

09/19/2023 - All Shifts

Zn Ch	Function	Channel Name/Trunked Radio System Talkgroup	Assignment	RX Freq N or W	RX Tone/NAC	TX Freq N or W	Tx Tone/NAC	Dev	Pwr	Mode A, D or M	Remarks
1	COMMAND	CMD 1	ALL BRANCHES	169.5375	156.7	164.7125	156.7	N	H	A	Located East of Fire Area
2	COMMAND	CMD 2	ALL BRANCHES	168.4750	156.7	165.4000	156.7	N	H	A	Located NW of Fire Area
3	COMMAND	CMD 3	ALL BRANCHES	170.2875	156.7	163.6125	156.7	N	H	A	NOT IN USE
4	COMMAND	CMD 4	ALL BRANCHES	171.0625	156.7	163.8250	156.7	N	H	A	Covers ICP + Hwy 126
5	COMMAND	CMD 5	ALL BRANCHES	170.6875	156.7	166.5750	156.7	N	H	A	Hoodoo Butte
6	TACTICAL	TAC 1	DIV A / C	168.0500	156.7	168.0500	156.7	N	H	A	Division Alpha & Division Charley
7	TACTICAL	TAC 2	Pothole/Horse Cr	168.2000	156.7	168.2000	156.7	N	H	A	Pothole / Horse Creek
8	TACTICAL	TAC 3	DIV H / White Pine	168.6000	156.7	168.6000	156.7	N	H	A	Division Hotel / White Pine
9	TACTICAL	TAC 4	DIV L	168.2500	156.7	168.2500	156.7	N	H	A	Division Lima
10	TACTICAL	TAC 5	DIV P	166.7250	156.7	166.7250	156.7	N	H	A	Division Papa
11	TACTICAL	TAC 6	DIV T / Nights	166.7750	156.7	166.7750	156.7	N	H	A	Division Tango / Nights
12	Forest Rptr.	Frissell	ALL DIVS	172.2500	103.5	164.9125	162.2	N	H	A	To Eugene Dispatch
13	Air-to-Ground	A/G PRI	ALL DIVS	167.0625	NONE	167.0625	NONE	N	H	A	Primary AIR TO GROUND
14	Air-to-Ground	A/G SEC	ALL DIVS	169.2000	NONE	169.2000	NONE	N	H	A	SECONDARY AIR TO GROUND
15	Air-to-Ground	VMED 29	MEDEVAC	155.3475	NONE	155.3475	156.7	N	H	A	Life Flight
16	EMERGENCY	AIRGUARD	EMERGENCY	168.6250	NONE	168.6250	110.9	N	H	A	EMERGENCY USE ONLY

Prepared By (Communications Unit Leader) Keith Brown - COM1 649780832818440 649780832818440 Keith Brown 649780832818440

Lookout Communications (661) 349-1513

Incident Location: County: State: OR

Forest / Unit / Jurisdiction: Latitude: " N Longitude: W

All Lookout fire resources should use Clone 93 Lookout as of 9/3/2023. All Divisions, use Command repeater that's best in your location.

**INCIDENT RADIO COMMUNICATIONS PLAN (ICS 205)**

Incident Name: **Bedrock**

Date/Time Prepared: **9/18/2023 1900**

Operational Period Date/Time: **09/19/2023 - All Shifts**

Zn Ch	Function	Channel Name/Trunked Radio System Talkgroup	Assignment	RX Freq N or W	RX Tone/NAC	TX Freq N or W	Tx Tone/NAC	Dev	Pwr	Mode A, D or M	Remarks
1	TACTICAL	TAC 1	North Repair	168.2500	136.5	168.2500	136.5	N	H	A	North Repair
2	TACTICAL	TAC 2	South Repair	166.7750	136.5	166.7750	136.5	N	H	A	South Repair
3	TACTICAL	TAC 3		166.7250	136.5	166.7250	136.5	N	H	A	UNASSIGNED
4	TACTICAL	TAC 4		168.6000	136.5	168.6000	136.5	N	H	A	UNASSIGNED
5	TACTICAL	TAC 5		168.2000	136.5	168.2000	136.5	N	H	A	UNASSIGNED
6	COMMAND	CMD 6	ALL BRANCHES	170.2500	136.5	162.8125	136.5	N	H	A	ALL - COMMAND (WEST) BEAR MTN
7	COMMAND	CMD 7	Not In Use	170.0000	136.5	166.6750	136.5	N	H	A	Not In Use
8	COMMAND	CMD 8	ALL BRANCHES	170.4125	136.5	165.9625	136.5	N	H	A	ALL - COMMAND (EAST) INDIAN FALL CRK
9	COMMAND	CMD 9	ALL BRANCHES	173.0375	136.5	167.3250	136.5	N	H	A	ALL - COMMAND (NE) PERNOT MTN
10	COMMAND	CMD 10	ALL BRANCHES	171.0375	136.5	162.1875	136.5	N	H	A	ALL - COMMAND (SOUTH) SINKER MTN
11	COMMAND	CMD 11	ALL BRANCHES	170.3125	136.5	164.6000	136.5	N	H	A	ALL - COMMAND SALMON BRANCH
12	TACTICAL	TAC 12		166.6000	136.5	166.6000	136.5	N	H	A	UNASSIGNED
13	Air-to-Ground	A/G PRI	ALL DIVS	172.4625	NONE	172.4625	NONE	N	H	A	Primary AIR TO GROUND
14	Air-to-Ground	A/G SEC	ALL DIVS	172.6750	NONE	172.6750	NONE	N	H	A	SECONDARY AIR TO GROUND
15	Air-to-Ground	VMED 29	MEDEVAC	155.3475	NONE	155.3475	156.7	N	H	A	Life Flight
16	EMERGENCY	AIRGUARD	EMERGENCY	168.6250	NONE	168.6250	110.9	N	H	A	EMERGENCY USE ONLY

Prepared By (Communications Unit Leader): **Keith P. Brown**

Lookout Communications (661) 349-1513

Incident Location: **Forest / Unit / Jurisdiction:**

County: **State: OR** Latitude: " N Longitude: W

64378008238440

All Divisions, use Command repeater that's best in your location.

**INCIDENT RADIO COMMUNICATIONS  
PLAN (ICS 205)**

Incident Name

**FOREST IA**

Date/Time Prepared  
**9/18/2023 1900**

Operational Period Date/Time  
**09/19/2023 - All Shifts**

Zn Ch	Function	Channel Name/Trunked Radio System Talkgroup	Assignment	RX Freq N or W	RX Tone/NAC	TX Freq N or W	Tx Tone/NAC	Dev	Pwr	Mode A, D or M	Remarks
1	TACTICAL	TAC 1	TAC 1	166.6000	136.5	166.6000	136.5	N	H	A	IA TAC
2	TACTICAL	TAC 2	RED NET	151.3400	156.7	151.3400	156.7	N	H	A	ODF RED NET
3	Air-to-Ground	A/G	White NET	151.3100	156.7	151.3100	156.7	N	H	A	ODF A/G
4	TACTICAL	PROJ MDL	PROJ MDL	168.7750	103.5	168.7750	103.5	N	H	A	USFS MIDDLE FORK PROJECT
5	COMMAND	TIMBER CK	TIMBER CK	170.4625	103.5	164.8250	131.8	N	H	A	USFS TIMBER CREEK
6	COMMAND	CMD 6	ALL BRANCES	170.2500	136.5	162.8125	136.5	N	H	A	BEDROCK COMMAND (WEST) BEAR MTN
7	COMMAND	CMD 7	Not In Use	170.0000	136.5	166.6750	136.5	N	H	A	Not In Use
8	COMMAND	LOWELL	LOWELL	170.4625	103.5	164.8250	110.9	N	H	A	USFS LOWELL
9	COMMAND	CMD 9	ALL BRANCES	173.0375	136.5	167.3250	136.5	N	H	A	BEDROCK COMMAND (NO) PERNOT MTN
10	COMMAND	CMD 10	ALL BRANCES	171.0375	136.5	162.1875	136.5	N	H	A	BEDROCK COMMAND (SOUTH) SINKER MTN.
11	Air-to-Ground	A/G 50	ALL DIVS	168.2875	NONE	168.2875	NONE	N	H	A	A/G PRIMARY - LOCAL
12	Air-to-Ground	A/G 59	ALL DIVS	169.1125	NONE	169.1125	NONE	N	H	A	A/G SECONDARY - LOCAL
13	Air-to-Ground	A/G PRI	ALL DIVS	172.4625	NONE	172.4625	NONE	N	H	A	AIR TO GROUND PRIMARY - BEDROCK
14	Air-to-Ground	A/G SEC	ALL DIVS	172.6750	NONE	172.6750	NONE	N	H	A	AIR TO GROUND SECONDARY-BEDROCK
15	Air-to-Ground	VMED 29	MEDEVAC	155.3475	NONE	155.3475	156.7	N	H	A	MEDICAL EVACUATION ONLY
16	EMERGENCY	AIRGUARD	EMERGENCY	168.6250	NONE	168.6250	110.9	N	H	A	EMERGENCY USE ONLY

Prepared By (Communications Unit Leader) Keith Brown - COM1 Keith Brown 54978003289440 Lookout Communications (661) 349-1513  
 Incident Location: Forest / Unit / Jurisdiction:  
 County: State: OR Latitude: " N Longitude: W

All Lookout fire resources should use Clone 93 as of 9/3/2023. All Divisions, use Command repeater that's best in your location.


Incident Radio Communications Plan (ICS 205)

1. Incident Name: PETE'S LAKE  
 2. Date/Time Prepared: Date: 9/18/2023 Time: 2000  
 3. Operational Period: Date From: 9/19/2023 Date To: 0700 Time From: 9/19/2023 Time To: 2100

4. Basic Radio Channel Use:

Zone Grp.	Ch #	Function	Channel Name/Trunked Radio System Talkgroup	Assignment	RX Freq	RX Tone	TX Freq	TX Tone	Mode (A, D, or M)	Remarks
12	3	CMD	Deschutes Mt Bachelor	ALL	170.4750	103.5	163.1625	156.7	A	
12	11	TAC	TAC 8	AMW	153.83		153.83		A	
12	12	TAC	ODF TAC (Tac 9)	Structure	159.24	156.7	159.24	156.7	A	
12	14	A/G (S)	AG 61	Secondary	169.2875		169.2875		A	
	16	A/G (P)	A/G Primary	Primary	164.7750		164.7750		A	

5. Special Instructions:

Prepared by: Keith Brown COML 

Date: 9/18/2023 Time: 1900

**HEALTH AND SAFETY MESSAGE**  
*Pacific Northwest Incident Management Team 2*



**INCIDENT:** Lookout~Bedrock

**DATE:** 9/19/23

**“TAKE YOUR TIME TO DO IT SAFELY”**

- Use time wisely to focus on safety issues, there is NOTHING that is more important.
- Do not let a sense of urgency, or the hazardous mindsets of “impulsiveness” or “mission fixation” compromise your safety.
- Any time spent planning for safety will pay dividends in the end.

**Major Hazards**

CHIPPING	COMPLACENCY	<b>HEAVY EQUIPMENT</b>
BEES	<b>LOG HAULING</b>	HAZARD GREEN TREES
<b>SNAGS</b>	STEEP TERRAIN	ROLLING DEBRIS

**Stay Hydrated**

Drink fluids before, during, and after the shifts.

For every 2 bottles of water, drink 1 bottle of Gatorade.

At 2% dehydration, performance will fall off by 10-20% and is the #1 trigger of fatigue.

<https://www.hsph.harvard.edu/nutritionsource/energy-drinks/>

**Hazard Tree Felling**

Felling a hazard tree requires accurate risk assessment and complexity analysis, and demands the sawyer’s full situational awareness. In all cases, remember to establish and maintain a secure felling area.

Do not bypass hazard trees without taking some action such as felling or establishing a No-Work-Zone.

Degree of hazard varies with tree size, species, and type/location of defect:

- Stem defects resulting in tree failure
- Weakened sapwood resulting in loss of control when falling trees and limits solid wood for wedging.
- Overhead hazards, i.e., dead or hanging limbs falling on the faller.

<https://wildfirelessons.blog/2021/04/27/tree-felling-accidents-what-the-numbers-say/>

PNW2 Safety Officers

## LOGISTICS MESSAGE

COMMUNICATIONS	Ph. 661-349-1513 Staffed 24 Hrs. (Lookout ICP)
----------------	--

ALL LINE ORDERS ARE TO GO THROUGH COMMUNICATIONS. (See line order form)

### Lookout ICP/Base (Walterville, OR)

Location	38656 Kickbusch Lane Walterville, OR 97478
Supply	Hours: 0600 – 2200 Phone: 423-220-7055
Laundry	Hours 0600 -1000 & 1500-2200
Fuel Truck	Hours: 0600 - 2100
Communications	Hours: 24 hour service
Kitchen	Hours: 0600 - 0900 Breakfast, Lunch pick up at reefer Hours: 1800 - 2100 Dinner
Weed Wash	Hours: 0700 - 1400 & 1600 - 2000
Showers	El Dorado: Hours: 0500 - 1200 & 1400 - 2200
Facilities Message:	Please email ALL Facility orders to 2023.Lookout.Facilities@Gmail.com
Ground Support	Hours: 0600 - 2130
Saw Shop	Hours: 0600 – 1100 & 1600 – 2200 Phone: 208-481-2589

### Hoodoo Forward Operating Base

Location	27400 Big Lake Rd, Sisters OR 97759
Communications	Hours: 0600-2200
Ground Support	Hours: 0600 - 2130
Fuel Truck	Hours: 0600 – 2100
Showers	Backcountry: Hours: 0500 - 1200 & 1400 - 2200
Kitchen	Hours: 0600 - 0900 Breakfast Lunch pick up at refer Hours: 1800 – 2100 Dinner
Supply	0600 - 2200
Weed Wash	Hours: 0700 – 1400 1600 - 2000
Laundry drop off available next to refer trailer. Two day turn-around for all laundry.	

### Lookout Staging (Rock Quarry)

Location	54547 McKenzie HWY
Ground Support	Hours: 0600 - 2130
Fuel Truck	Hours: 0600 - 2100
Weed Wash	Hours: 0700 – 1400 & 1600 - 2000

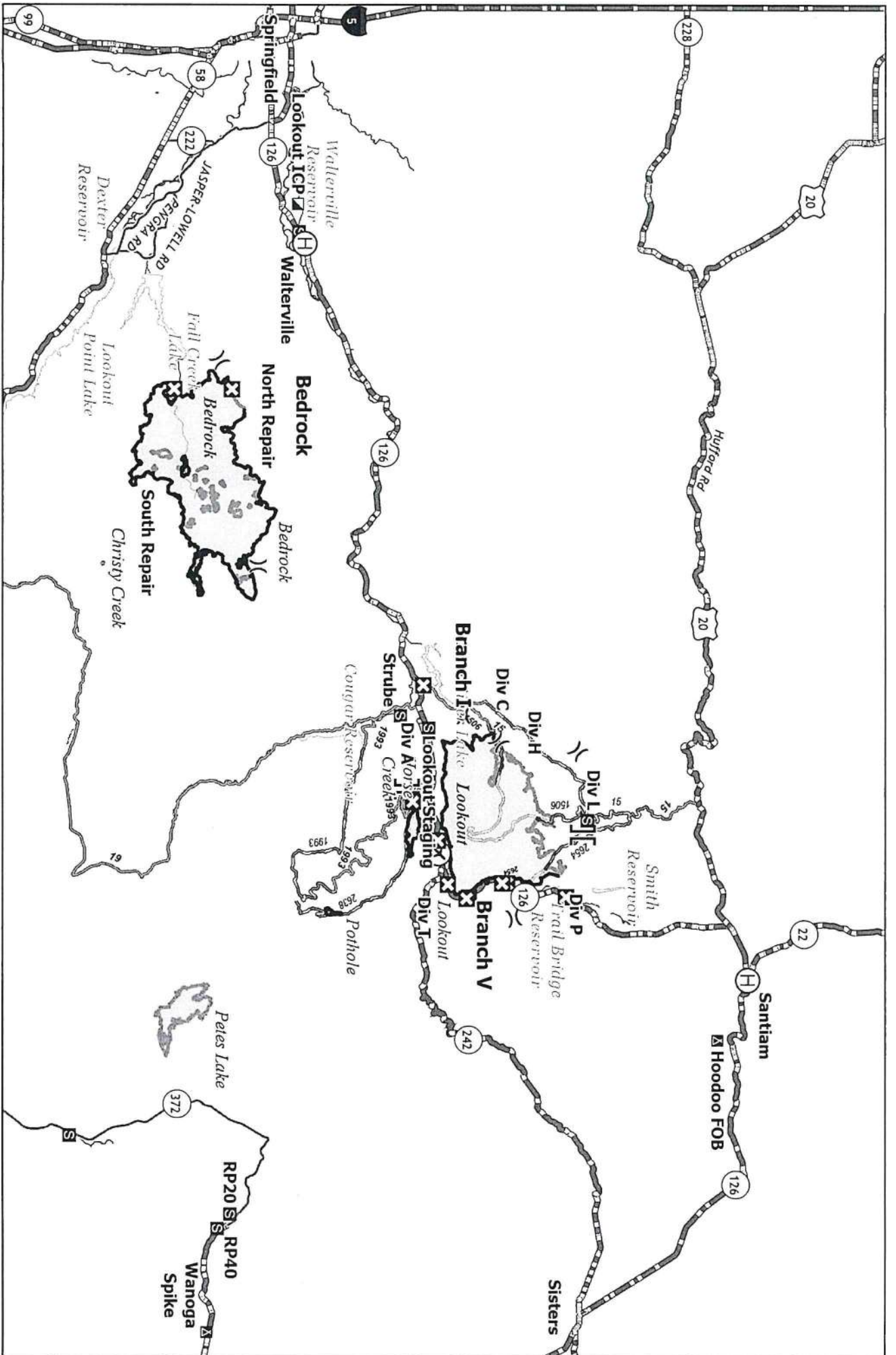
### Transportation Contacts for Ground Support

Lookout ICP	Eugene Quilter: 435-691-4130
Lookout Staging	Todd Griffin: 206-660-9644
HooDoo FOB	Mike Howard 541-602-0843

**ORDERING: Lookout: [2023.lookout.ordering@firenet.gov](mailto:2023.lookout.ordering@firenet.gov)**

**Bedrock: [2023.bedrock.ordering@firenet.gov](mailto:2023.bedrock.ordering@firenet.gov)**





### Transportation

Bedrock - ORWIF-230266  
 Lookout - ORWIF-230327  
 Petes Lake - ORWIF-230409  
 09/19/2023

- ⊕ Airstrip or Airport
- ⊕ Helibase
- ⊕ Division Break
- ⊕ Branch Break
- ⊕ Incident Command Post
- ⊕ Camp
- ⊕ Staging Area
- ⊕ Fire Area
- ⊕ Closure



**Lookout ICP:** 38601 Camp Creek Road, Waltersville, OR 97489  
 14.5 Miles from Eugene, 19 min) - Weed Wash Station  
**Lookout Staging:** 54547 McKenzie Hwy, Blue River, OR 97413 - Weed Wash Station  
**Hoodoo FOB:** 27400 Big Lake Rd., Sisters, OR 97759 - Weed Wash Station  
**Wagona Spike:** 15523 Cascade Lakes Hwy, La Pine, OR 97739



# Finance Message



Please email your CTRs & Shift Tickets to the fire listed on your resource order.

Lookout: 2023.lookout.finance@firenet.gov  
 Bedrock: 2023.bedrock.finance@firenet.gov  
 Petes Lake: 2023.peteslake.finance@firenet.gov

SUBJECT: *EQUIPMENT* for Contract Resources  
 SUBJECT: *TIME* for Fed, State, & Local Gov't Crews & Employees

Lookout ICP                    661-349-1530  
 Hoodoo Camp                971-713-0359  
 Comp Claims                 360-318-5211

Please indicate the name & number **of the fire where you are working** on all CTRs & Shift Tickets

LOOKOUT QH2A OR-WIF-230327	HORSE CREEK QLQ0 OR-WIF-230392	PETES LAKE QLV9 OR-WIF-230409	POTHOLE QLK2 OR-WIF-230393	BEDROCK QEW8 OR-WIF-230266
----------------------------------	--------------------------------------	-------------------------------------	----------------------------------	----------------------------------

PLEASE SUBMIT ALL DOCUMENTS IN PDF FORMAT

### Documents you must submit to finance

Government & Cooperator Resources	Contract Resources
<ul style="list-style-type: none"> <li>• <b>Upon Check-In:</b> Crew Manifest, Cooperative Agreement (if applies), AD Hire Letter, Resource Order</li> <li>• <b>Daily:</b> Crew Time Report (CTR), Shift Tickets</li> <li>• <b>Demob:</b> Signed OF288, Final Equipment Use Invoice (Cooperator)</li> </ul>	<ul style="list-style-type: none"> <li>• <b>Upon Check-In:</b> Resource Order, Full Contract/Agreement, Certifications (<i>if required</i>), Pre-Inspection</li> <li>• <b>Daily:</b> Shift Tickets, receipts (fuel issues, claims, hotels, etc.)</li> <li>• <b>Demob:</b> Contractor Evaluations, Final Shift Tickets and receipt(s) for Addition/Deductions, Post-Inspection, Final Signed Invoices</li> </ul>

Contract Vendors, if you have been here for 14 days or more and wish to have an interim payment processed, please see finance.

Finance is open at 0600 so please feel free to stop in before briefing! 😊

**If you are listed below – please call, email or visit finance.**

PERSONNEL LIST		BEDROCK EQUIPMENT		LOOKOUT EQUIPMENT	
O628	Bemelen, Mark	E277	Adventure Medics	E190	A&H Forestry
O592	Covey, Charlotte	E327	Allied Water Service	E114-121	AAA Mobile BaseCamp
O665	Foster, Kevin	E498	Axsus Enterprise	E123	AAA Mobile BaseCamp
O731	Gjerde, Sequoia	E507	AXSUS ENTERPRISES LLC	E176	ABLaze Communications
E621	Grand Ronde 131	E524	BFC Limited	O682	Adventure Medics
O727	Heidenreich Noah	E232	Bob Murry Logging	E16	Allied Water
O475	Kennedy, Cayla	E508	Brink Brothers	E35	American Med Response Northwest
O644	Kranendonk, Donald	E280	Brink Brothers	E24	Axsus
C88	Marlette Peak Crews	E200	Bucks Sanitary Service	E333	AXSUS ENTERPRISES LLC
O526	Michael Waugh	E450	Charles irelands	E91	Bar Seven A Companies
O583	Mullings, Shaun	E164	J3 Contracting	E184	Bear Creek Resources
O572	Munoz, Mark	E544	J3 Contracting	E172	Best Practice Medicine
O541	O'Neal, Daniel	E479	J3 Contracting	E3	Best Practice Medicine
E630	Parker, Preston	E164	J3 Contracting	O52	Beyond the Edge
O638	Richardson, Mark	E451	J3 Contracting	O53	Beyond the Edge
O498	Rinck, Moses	E67	Lee Roy belloir & Sons	E274	Brink Brothers
O568	Rowe, Shane	E523	Mark Jones	E189	Brink Brothers
O630	Sanders, David	E148	Miller Timber	E151	Central Oregon Fire
O591	Seivers, Nate	E14	Minuteman EMS	E152	Central Oregon Fire
E630	Trapero, Kenneth	E41	Outback Firefighting	E83	Clay
O814	Vierria, Joshua	E503	Portable Rock Production	E17	David Browning
		E174	Rude Logging	E339	Fire Dancers
		E497	Russells Management	O55	HART (Meredith)
		E496	Table Mountain Forestry	E1000*	HART (ODF)
		E531	Top Notch Tree Service	O419	High Priority Consultants
		E129	Warren Kirk Partridge	E22	J & D
		E431	Weyerhaeuser	E27	JB Logging
		E181	Zeb's Tree Service	E345	Miller
		E29	Paragon Water Tenders	O53 O83	Minutemen EMS
		E274	Timber Basin Contractors	O12	Pacific Ridgeline
				E414	Pacific Ridgeline
				E495	RAHNS INC
				E433	Rough Country Response
				E338	Shan Creek
				E225	Statewide
				E587	Timber Basin Contractors
				E437	Water to go
				E432	Weyerhaeuser
				E360	Whitehead

- \* PLEASE SHOW YOUR LUNCH BREAK – IF NO BREAK SHOWN IT MUST BE JUSTIFIED IN COMMENTS
- \* WHEN CLAIMING HAZARD PAY YOU MUST INCLUDE THE SUPPRESSION ACTION BEING PERFORMED. THIS INCLUDES OPERATIONS WHICH DIRECTLY SUPPORT CONTROL OF FIRE (E.G., ACTIVITIES TO EXTINGUISH THE FIRE, FIREFIGHTING, GROUND SCOUTING, SPOT FIRE PATROLLING, SEARCH AND RESCUE OPERATIONS, AND BACKFIRING). – PER PMS902 – YELLOW BOOK

# LOOKOUT and BEDROCK DEMOB LIST (09/19 TO 9/21)

If your Demob method of travel is by air, contact DMOB at (971) 762-8572 at least 72-hours in advance of your last work day.

**Day Before Your Demob:**

Contact FINANCE 24 hours prior to give them a heads-up you are departing and turn in any outstanding CTR/Shift Ticket. Make sure they are SIGNED. Confirm there is no missing financial documentation.

**Day of Demob STEP 1:**

Contact DMOB at 971-762-8572 or in person to obtain your Demob Check-Out Form (ICS 221) and to determine your specific next steps since we are pre-clearing personnel that do not have any supplies or communications equipment checked out.

**STEP 2:**

Have your vehicle "weed washed" at Lookout ICP; Hoodoo FOB or at Rock Quarry Staging Area.

**STEP 3 (if directed by DMOB):**

**SUPPLY** – see in person to return issued gear and leftover supplies

**COMMUNICATIONS** – see in person to return any communications equipment

**GROUND SUPPORT** – see in person to return incident rental vehicles, contractors to get an inspection, etc.

**STEP 4:**

Proceed to, or call, FINANCE at (661) 349-1530 at Lookout ICP or (971) 713-0359 at Hoodoo FOB to complete time closeout process and receive signed OF-288 or OF-286

**STEP 5:**

**Return to Demob for final closeout**

- Turn in any Unit Logs and Evaluations to Documentation Unit (Documentation Box).
- DMOB will verify check-out completion.
- Be prepared to address your actual departure date/time; your anticipated arrival date/time; and where you will be staying overnight if travel includes overnight stops.

## LOOKOUT

RO #	Item Code	Name	RO #	Item Code	Name
<b>September 19</b>			<b>September 20</b>		
<b>AIR</b>			<b>EQUIPMENT</b>		
A-107.5	UASP	DANIEL, LEONARD	E-3	AMB2	BEST PRACTICE
<b>CREWS</b>			E-22	LOGL	J & D
C-85	CRW1	ENTIAT IHC	E-182	GWT2	L & C
<b>EQUIPMENT</b>			E-231	MBM	JUSTIN PITTS
E-38	MBM1	HIGHTOWER	E-394	DZR2	DEREK CECILIANI
E-250	ENG3	OUTBACK	E-593	PUP1	RENTAL - O-506
E-253	ENG4	WOODPECKER	<b>OVERHEAD</b>		
E-259	ENG4	AAA THUNDERBOLT	O-447.6	SOF1	WAGNER, BRADLEY
E-262	ENG4	CHEWACK	O-642	HECM	WEAVER, ANTHOM
E-266	ENG4	GE	O-504	SEC2	SAWYER, STEVEN LEWIS
E-277	WTS2	BRONSON	O-506	ABRO	MILICH, KATE
E-289	WTS2	HUGHES, PATRICK	O-522	SOFC	HARNDEN, RICHARD
E-301	ENG3	HEK JONES	O-559	HECM	BURKHOLDER, CLINTON
E-506	ENG6	TRI-STATE FIRE LLC	O-561	COML	FORSYTH, WILLIAM
<b>OVERHEAD</b>			O-571	HEQB	PETERS, THOMAS
O-495	FMOD	GROUND ZERO	O-575	HEBM	SOULE, KIMBERLEY
O-496	FMOD	BD TIMBER	O-583	TFLD	MULLINS, SHAUN
O-515	ABRO	PADILLA, LUCY	O-591	REAF	SIEVERS, NATHANIEL
O-525	TFLD	VER, GREGORY	O-596	HEQB	SENSECQUA, KELLY
O-526	TFLD	WAUGH, MICHAEL	O-607	SECM	FORBEY, KEIRSTEN
O-534	HEQB	HELEBRANT, ERIC	O-630	REAF	SANDERS, DAVID
O-541	HEQB	O'NEAL, DANIEL	O-636	SOF2	MOTT, TODD
O-545	EQTR	WARD, LISA	O-638	REAF	RICHARDSON, MARK
O-568	HEQB	ROWE, SHANE	O-655	HECM	BRADLEY, TYLER
O-592	RADO	COVEY, OLIVIA	O-671	MEDL	HERRERA, RYAN
O-594	PTRC	CONTRERAS, GAYLE	O-715.70	SCKN	PFEFFER, ANNABELLE R
O-597	IMET	MCKELLAR, COLIN	<b>September 21</b>		
O-654	SECM	RASMUSSEN, KREIG	<b>CREWS</b>		
O-715.68	SITL	HRUSKA, JEREMY	C-91	CR2I	PACIFIC OASIS 14A
O-717	HEBM	BENTLEY, MICHAEL	C-93	CR2I	GRAYBACK 16B
			C-74	CRWC	GRIZZLY FIREFIGHTERS -

# LOOKOUT and BEDROCK DEMOB LIST (09/19 TO 9/21)

## September 21 Continuation

### EQUIPMENT

E-555	CHP1	MILLER TIMBER SERVICES
E-507	ENG6	R & R CONTRACTING
E-358	LOGT	BRINK BROTHERS INC
E-414	WEED	PACIFIC RIDGELINE
E-599	WEED	XTREME WILDLAND
E-508	ENG6	EARTH INDUSTRIES

### OVERHEAD

O-574	DIVS	QUIST, IAN
O-640	HECM	PALMER, NICKOLAS
O-764	HEQB	JENSEN, JEREMY
O-649	TFLD	ABELL, MATTHEW
O-650	TFLD	BEYUKA, JAZZ E
O-652	TFLD	YOUNG, GAVIN
O-576	TFLD	VELAZQUEZ, RENE
O-590	ARCH	KIRKPATRICK, MOLLY
O-564	DIVS	MALOLO, PILA
O-651	DIVS	COBURN, JEFFREY
O-665	FELB	FOSTER, KEVIN
O-648	SEC1	WILCOX, JOSEPH
O-628	COMT	BEMELEN, MARK
O-653	BCMG	SLAVIK, SCOTT
O-624	EQPM	GRAY, JAMES A
O-587	IMET	MOORE, MAKOTO
O-773	PIOC	DAVIS, MARILYNN
O-604	SOFC	INGRAM, MATTHEW

## **BEDROCK**

RO #	Item Code	Name
------	-----------	------

### September 19

#### EQUIPMENT

E-148	WTS2	MILLER TIMBER (BDRK)
E-322	WTS2	SS LAND SERVICES (BDRK)

### September 20

#### EQUIPMENT

E-31	STK1	TRAILS END BBQ CO
E-524	VR0L	BFC LIMITED7 BDRK
E-528	LOGT	MARK JONES TRUCKING #3

### September 21

#### EQUIPMENT

E-41	HOSU	OUTBACK FRFIHTNG
E-473	WTS2	LEE ROY BELLOIR
E-468	EXC2	4-Q TIMBER
E-454	MBM2	J & D {

# LOOKOUT/BEDROCK/HORSE CREEK/POTHOLES FIRES HUMAN RESOURCE MESSAGE

"Years ago, anthropologist Margaret Mead was asked by a student what she considered to be the first sign of civilization in a culture. The student expected Mead to talk about fishhooks or clay pots or grinding stones.

But no. Mead said that the first sign of civilization that she found in ancient culture was a femur (thigh bone) that had been broken and then healed. Mead explained that in the animal kingdom, if you break your leg, you die. You cannot run from danger, get to the river for a drink or hunt for food. You are meat for prowling beasts. No animal survives a broken leg long enough for the bone to heal.

A broken femur that has healed is evidence that someone has taken time to stay with the one who fell, has bound up the wound, has carried the person to safety, and has tended the person through recovery. Helping someone else through difficulty is where civilization starts, Mead said."

We are at our best when we serve others. Be civilized.



**If there is any way we can assist you,  
please do not hesitate to contact us.  
Your Human Resource Specialists,**

**Mike Baines, 724-678-6147  
Teresa Smergut 541-263-2283**

## *Training Message*

### ARE YOU ORDERED AS A TRAINEE?

If you are ordered as a trainee, please sign up for the incident trainee program. You will be registered with the incident training specialist by filling out the questionnaire from the QR code in the IAP, please email scans or pictures of your incident qualification card and front cover of your task book to [Team10TNSP@yahoo.com](mailto:Team10TNSP@yahoo.com). During your time on this incident ensure you work with your trainer to complete the tasks you need evaluated if possible. Ensure your trainer evaluate your position task book tasks you are able to complete, and completes your position task book evaluation page as well as a performance evaluation (ICS-225). These forms are emailed to you once you complete the Trainee form. Upon completion of your assignment (***can be a couple days early to speed up demob***), please email, scans or pictures of your position task book evaluation and performance evaluation (ICS-225) to [Team10TNSP@yahoo.com](mailto:Team10TNSP@yahoo.com). These will be checked for accuracy, logged in the system, and sent on to your home unit training contact through email. I am working remotely. Please contact me if you have any further needs [Team10TNSP@yahoo.com](mailto:Team10TNSP@yahoo.com) or phone 360-490-5355, I look forward to serving you.

Training Specialist  
Neal Cox



# Resource Advisor Message - Lookout Fire

Monte Kuk, Lead READ – Lookout & Bedrock Fire, 458-239-4080 monte.kuk@usda.gov

**Divisions doing Suppression Repair please take a look around where you are working and pick up any trash at the end of your shift. Divisions doing mop up please remember to keep down logs as intact as possible - don't buck into pieces unless necessary. Weed wash if moving between Bedrock and Lookout fires if in weed areas.**

## *Engineering and Roads*

- Do not track heavy equipment on paved roads without the proper mitigations (ie. street grousers, rubber mats, etc.).
- If any road issues or concerns are encountered, please contact a REAF.

## *Dozer Lines*

- Please work with Resource Advisors to clear proposed dozer lines.
- Please minimize the depth of the dozer line to the least extent required to meet objectives. Deep cuts are expensive, time consuming, and difficult to repair.

## *Heritage & Cultural*

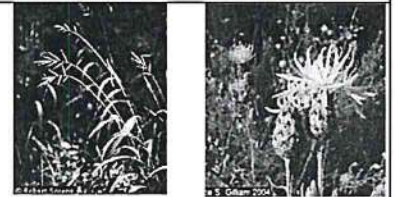
All cultural resources and human remains are protected by law. **Leave them in place- no collecting.** Call Resource Advisor if cultural resource like arrowheads, flakes/chips, or historic artifacts like cans & bottles are found and they will investigate.

## *Noxious Weeds*

### WEED WASH STATION:

- The Weed Wash stations are operational and located at Strubb Flat, Kickbrush & Hoodoo
- Please use the weed wash upon arrival at the incident, and during demob
- Avoid the following weed: Slender False Brome and Spotted Knapweed

REDUCE THE SPREAD: Brush off packs & boots (especially laces) before leaving fire camp.



## *Tree Felling Operations*

Please keep equipment on road surface to the greatest extent possible

### Log Processing:

- Utilize existing openings and landings for decking, ditch lines/roadside is acceptable
- Process trees down to a 6" top (small end diameter). Use remaining for firewood logs, rehab, or chip
- Preferred Log Lengths (maximize length whenever possible): 41 foot Max – 17 foot Min
- 2' increments below 41', keeping logs as long as possible (41', 39', 37', etc....) Process unburnt trees on the unburnt side of the fireline. Process burnt trees on the burnt side of the fireline.
- Keep processed slash and tops out of decks and off roads
- If possible, sort decks by species and log lengths

### Snags and Hazard Trees:

Old growth is a key value. Limit snagging to operational needs & limit bucking to retain long bowls of large felled trees or snags.

## *Water Quality and Fisheries*

### AERIAL DIPPING:

- Aerial dipping should only occur at approved dip sites. Blue River Res. has a use restriction to facilitate dipping. Check with your REAF for approval of dipping sites.
- Be sure to wash buckets when new aerial resources arrive at the fire, when switching dips sites, or when returning to the fire from off forest.

### WATER DRAFTING:

- Limited Drafting is available at the bridge across Lookout Creek on the 1506 road in section 28. Check with the REAF for additional drafting locations as needed.
- Utilize fish screens when in fish bearing waterbodies (REAFs have these available).
- Maintain sufficient flow as to not dewater downstream reaches
- Utilize splash pans and absorbent pads. REAFs will assist if given the location.

### GROUND BASED RETARDANT APPLICATION:

- Provide a 75 foot buffer from riparian areas with live water when applying ground based retardant.

### CHIPPING STANDARDS:

- Provide a 30- foot buffer of no chipping at water crossings or culverts.
- Do not place chips into road ditch.
- Do not chip onto a steep slope where chips will slide back into the ditch.
- Broadcast chipped material, ensuring that chips are no more than 4" deep.





## HELICOPTER EXTRACTION OPERATIONS

The intent of helicopter insertion/extraction operations is to facilitate the movement of personnel to and from inaccessible areas. These operations are not meant to be a medical transport resource; life flight and ground transportation should always be ordered in addition to the extraction aircraft and crew.

### ORDERING:

- On-scene EMT and/or Incident within Incident IC determines that an extraction helicopter is needed and places the order through the pre-established procedures:
  - Division Supervisor
  - Incident Communications
  - Dispatch Center
- When ordering extraction aircraft provide the following information:
  - Location (Lat/Long) of patient
  - Known Hazards
  - Wind Speed and Direction
  - Terrain
  - Incident Updates

### SITE SELECTION:

- The helicopter crew will confirm the extraction location when they arrive on scene. However, a general rule is any clearing that is 10'x10' with visible sight lines to the sky is a suitable extraction site.
- If the terrain is steep, excavating a platform or shelf can make it easier for patient packaging.

QR Code-Short-haul Site Selection Video



### CONSIDERATIONS:

- Short-haul and hoist are safe and efficient operations for extracting injured personnel of any severity including "Green" patients.
- Ensure area is clear of non-essential items, hazards, and personnel.
- Rotor wash may affect overhead hazards and blowing dust/debris can create brown out conditions or influence fire behavior.
- Aerial Supervision is valuable for coordinating aviation medevac/extraction missions and should be ordered if available and not currently present.
- The aircrew will make the final assessment of the mission. Always have a contingency plan in case a helicopter cannot complete the request.

### DEFINITIONS:

**Rescue Hoist:** A cable winching device mounted to the helicopter that can lower/raise persons attached to a cable.

- Common cable lengths are 250-300 feet.

**Short-haul:** To insert or extract one or more persons suspended on a fixed line beneath a helicopter.

- Common short-haul line lengths are 100, 150, and 250 feet. The lines can also be connected for a longer line if the situation requires it.

Incident/Project Name		Operational Period						
<b>LOOKOUT/BEDROCK</b>		Date/Time:	<b>09/19 - 09/20 0700-0700</b>					
Ambulance Services								
Name	Complete Address	Phone & EMS Frequency	Advanced Life Support (ALS) Yes No					
AMBO 308 (Lookout Transport)	Blue River Reservoir	Command Channel	X					
Sister-Camp Sherman R.F.P.D	301 South Elm Street Sisters, OR	541-693-6911	X					
Eugene/Springfield Fire (Lookout Transport)	1705 W. 2 <sup>nd</sup> Ave Eugene, OR	Lane County 911	X					
Oakridge Fire (Bedrock Transport)	47592 Hwy 58 Oakridge, OR	Lane County 911	X					
Air Ambulance Services								
Name	Phone	Type of Aircraft & Capability						
Life Flight – Eugene or Redmond	Order through Lookout Comms 800-232-0911	Critical Care Team of Paramedics and RN NVG, Freq: VMED 29						
Airlink - Bend	Order through Lookout Comms 800-353-0497	Critical Care Team of Paramedics and RN NVG, Freq: VMED 29						
Teton Short Haul	Ordered by Lookout Comms	ALS, Short Haul, not-dedicated to the incident – Daytime use only						
Hospitals								
Name Complete Address	GPS Datum – WGS 84 Coordinate Standard Degrees Decimal Minutes		Travel Time Air Gnd		Phone	Helipad Yes No		Level of Care Facility
	Lat:	Long:						
PeaceHealth Sacred Heart Medical Center 333 Riverbend Drive Springfield, OR 97477	44° 04.876' N	123° 01.588' W	10 min	20 min	541-222-6931	X		Level 2 Trauma
	OG64							
St Charles Bend 2500 NW Neff Rd Bend, OR 97701	44°04.1023'N	121°16.0537'W	45 mins	2 hours 20 min	541-382-4321	X		Level 2 Trauma
	54OR							
Legacy Emanuel Hospital 3001 N Gantenbein Ave Portland, OR 97227	45°32.6679'N	122°40.2933'W	45 mins	2 hours	(406) 329-5635	X		Level 1 Trauma Burn Center
	7OR5							
OHSU Hospital 3181 SW Sam Jackson Park Rd, Portland, OR 97239	45°29.9498'N	114°29.7 W	45 mins	2 hours	ER (503) 494-7550	X		Level 1 Trauma
	80ID							

# MEDICAL PLAN (ICS 206 WF)

Controlled Unclassified Information//Basic

Division   Branch   Group	Area Location Capability		
<b>ICP</b>	<b>EMS Personnel:</b>	Dave O'Brien MEDL	360-624-8023
		Magenta Widner MEDL(t)	360-410-5433
		Mari Bottoms MEDL(t)	541-403-1703
		Ryan Herrera MEDL	253-297-0537
		AMBO 310 - Ian Morse (EMPF)	423-596-1335
	<b>Equipment Available on Scene:</b>	ALS Ambulance, Medical Yurt w/ OTC Meds	
	<b>Medical Emergency Channel:</b>	Lookout Communications	
	<b>Approved Helispot:</b>	N/A	
<b>BEDROCK NORTH REPAIR</b>	<b>EMS Personnel:</b>	REMS 43 - Kamron Greer (EMPF) 832-585-6044	
		MEDIC TEAM 38 - Branton Thompson (EMPF) 479-957-8580	
		AMBO 15 - Lucy Cummins (EMPF) 567-274-8888	
	<b>Equipment Available on Scene:</b>	ALS Ambulance, UTV w/ Technical Rescue, ALS w/ UTV	
<b>Medical Emergency Channel:</b>	Bedrock Communications		
<b>Approved Helispot:</b>	H-2, H-5, Cascara Camp		
<b>BEDROCK SOUTH REPAIR</b>	<b>EMS Personnel:</b>	AMBO 10 - Andre Martoni (EMPF) 612-707-8496	
		EMT 119 - Nadia Jenman (EMTF) 816-666-0534	
	<b>Equipment Available on Scene:</b>	ALS Ambulance, ALS w/ UTV	
	<b>Medical Emergency Channel:</b>	Bedrock Communications	
<b>Approved Helispot:</b>	H-5, H-10, H-32		
<b>BRANCH I DIV A/C</b>	<b>EMS Personnel:</b>	AMBO 308 - Ali Hammoudeh (EMPF) 973-968-9455	
		MEDIC 222 - Ritvik Chakraborty (EMPF) 678-308-3264	
	<b>Equipment Available on Scene:</b>	ALS Ambulance (Transport Only)	
	<b>Medical Emergency Channel:</b>	Lookout Communications	
<b>Approved Helispot:</b>	H-1, H-2, H-20, H-30, H-40		
<b>BRANCH I DIV H</b>	<b>EMS Personnel:</b>	RAT 6 - Mike Planeta (EMTF) 623-332-4262	
		AMBO 303 - Kyle Mead (EMPF) 561-317-996	
		MEDIC 228 - Kyle Kemerer (EMPF) 650-868-2803	
	<b>Equipment Available on Scene:</b>	ALS w/ UTV, ALS Ambulance	
<b>Medical Emergency Channel:</b>	Lookout Communications		
<b>Approved Helispot:</b>	H-2, H-30, H-40		
<b>BRANCH I DIV L</b>	<b>EMS Personnel:</b>	RAT 7 - Raul Ruiz (EMPF) 915-504-8955	
		AMBO 301 - Ethan Beiderman (EMPF) 513-882-2837	
		MEDIC 221 - Jacob Smith (EMPF) 808-829-9623	
		EMT 108 - Stephan Blaskovics (AEMF) 757-615-8212	
<b>Equipment Available on Scene:</b>	ALS Ambulance, UTV w/ Technical Rescue		
<b>Medical Emergency Channel:</b>	Lookout Communications		
<b>Approved Helispot:</b>	H-40		

## MEDICAL PLAN (ICS 206 WF)

Controlled Unclassified Information//Basic

<b>BRANCH V DIV P</b>	<b>EMS Personnel:</b>	RAT 5 - Jeff Farris (EMPF) 623-826-8258 AMBO 306 - Stephen Spigelman (EMPF) 929-248-0242 MEDIC 213 - Breianah Riojas-Purinton (EMPF) 602-931-3448 EMT 120 - Trayse Riggle (EMTF) 541-805-5585
	<b>Equipment Available on Scene:</b>	ALS Ambulance, UTV w/ Technical Rescue
	<b>Medical Emergency Channel:</b>	Lookout Communications
	<b>Approved Helispot:</b>	H-1, H-41
<b>BRANCH V DIV T</b>	<b>EMS Personnel:</b>	MEDIC 230 - David Stanton (EMPF) 206-819-6053 MEDIC 223 - Benjamin Sholl (EMPF) 757-773-4688 EMT 124 - Daniel Hilberg (EMTF) 951-541-3351
	<b>Equipment Available on Scene:</b>	ALS
	<b>Medical Emergency Channel:</b>	Lookout Communications
	<b>Approved Helispot:</b>	H-1
<b>BRANCH V HORSE CREEK POTHOLE</b>	<b>EMS Personnel:</b>	RAT 4 - Rick Bostian (EMPF) 479-442-0462 AMBO 309 - Chris Howard (EMPF) 979-571-2916 MEDIC 231 - Luke Eversole (EMPF) 480-326-5676
	<b>Equipment Available on Scene:</b>	UTV w/ Technical Rescue, ALS Ambulance
	<b>Medical Emergency Channel:</b>	Lookout Communications
	<b>Approved Helispot:</b>	H-1
<b>BRANCH V WHITE PINE</b>	<b>EMS Personnel:</b>	MEDIC 229 - Nathan Davis (EMPF) 816-844-5859 EMT 121 - Lacy Singhose (EMTF) 541-589-4175
	<b>Equipment Available on Scene:</b>	ALS, UTV w/ Technical Rescue
	<b>Medical Emergency Channel:</b>	Lookout Communications
	<b>Approved Helispot:</b>	H-1
<b>NIGHTS</b>	<b>EMS Personnel:</b>	AMBO 304 - Russell Long-Thompson (EMPF) 514-965-1183 MEDIC 227 - Jes Tews (EMPF) 775-745-4012 MEDIC 224 - Alexander Pizzonia (EMPF) 413-446-8315 EMT 123 - Ian Roy (EMTF) 707-508-9620 EMT 122 - Ethan Jarrett (EMTF) 479-312-0972
	<b>Equipment Available on Scene:</b>	ALS Ambulance
	<b>Medical Emergency Channel:</b>	Lookout Communications
	<b>Approved Helispot:</b>	H-1, H-2
<b>HOODOO FOB</b>	<b>EMS Personnel:</b>	MEDL(t) - Necole Ontko (EMPF) 541-815-6365 AMBO 307 - Jeffrey Kwiecien (EMPF) 570-394-2707
	<b>Equipment Available on Scene:</b>	ALS w/ OTC Meds
	<b>Medical Emergency Channel:</b>	Lookout Communications
	<b>Approved Helispot:</b>	N/A

**MEDICAL PLAN (ICS 206 WF)**  
**Controlled Unclassified Information//Basic**

<b>SANTIAM HELIBASE</b>	EMS Personnel:	MEDIC 226 - Steve McDowell (EMPF) 208-949-7936	
	Equipment Available on Scene:	ALS w/ OTC Meds	
	Medical Emergency Channel:	Lookout Communications	
	Approved Helispot:	Santiam Helibase	
<b>SUN RIVER HELIBASE</b>	EMS Personnel:	MEDIC 225 - Josh Puskar (EMPF) 440-796-6903	
	Equipment Available on Scene:	ALS w/ OTC Meds	
	Medical Emergency Channel:	Lookout Communications	
	Approved Helispot:	Sun River Helibase	
<b>PETE'S LAKE</b>	EMS Personnel:	AMB 311- Sam Nakashini (EMPF) 440-596-2043 REMS 1 - Sage Stewart (EMTF) 479-806-0860 EMT 125 - Jennifer Cudnik (EMTF)530-957-5859	
	Equipment Available on Scene:	ALS w/ OTC Meds, ALS w/UTV, technical rope rescue	
	Medical Emergency Channel:	Lookout Communications	
	Approved Helispot:	H3	
<b>Prepared By (Med Unit Leader)</b>	<b>Date/Time</b>	<b>Reviewed By (Safety Officer)</b>	<b>Date/Time</b>
Dave O'Brien MEDL Magenta Widner MEDL(t)	09/18/2023 - 2000	<i>Marshall Brown</i> SOF1	09/18/2023 - 2000



## EMERGENCY PLAN INCIDENT WITHIN AN INCIDENT

### ON SCENE INCIDENT COMMANDER

In the event of an accident or medical incident of any size, your primary responsibility is to ENSURE that the victim(s) receive prompt and effective Triage, Treatment, Extrication and Transport.

- **ENSURE THE MEDICAL INCIDENT REPORT IN THE INCIDENT ACTION PLAN IS BEING USED AND FOLLOWED- \*IF DETERMINED TO BE A GREEN THAT REQUIRES TRANSPORT BACK TO CAMP OR TO A MEDICAL FACILITY, DO NOT DECLARE EMERGENCY TRAFFIC AND ONLY COMPLETE LINE 1-4 ON MEDICAL INCIDENT REPORT\*.**
- Conduct size-up of the incident nature of accident, number type of resources involved, latitude and longitude location (DD°MMM.MM format): notify incident communications center and supervisor, request assistance as needed.
- Order and coordinate medical and support response to the accident.
- Evaluate special needs (law enforcement, haz mat, etc.).
- Clear the command frequency if medical emergency, coordinate with incident communications and air attack for air medical transportation needs.
- Preserve and photograph the scene for accident investigation.
- Remain aware of surroundings and the status of the main incident (delegate personnel to monitor the main fire) to ensure safety of medical treatment personnel.
- Until relieved, supervise and manage all personnel involved at the incident scene.

# MEDICAL PLAN (ICS 206 WF)

Controlled Unclassified Information//Basic

## Medical Incident Report

FOR A NON-EMERGENCY INCIDENT, WORK THROUGH CHAIN OF COMMAND TO REPORT AND TRANSPORT INJURED PERSONNEL AS NECESSARY.

FOR A MEDICAL EMERGENCY: IDENTIFY ON-SCENE INCIDENT COMMANDER BY NAME AND POSITION AND ANNOUNCE "MEDICAL EMERGENCY" TO INITIATE RESPONSE FROM IMT COMMUNICATIONS/DISPATCH.

**Use the following items to communicate situation to communications/dispatch.**

**1. CONTACT COMMUNICATIONS / DISPATCH** (Verify correct frequency prior to starting report)

*Ex: "Communications, Div. Alpha. Stand-by for Emergency Traffic."*

**2. INCIDENT STATUS:** Provide incident summary (including number of patients) and command structure.

*Ex: "Communications, I have a Red priority patient, unconscious, struck by a falling tree. Requesting air ambulance to Forest Road 1 at (Lat./Long.) This will be the Trout Meadow Medical, IC is TFLD Jones. EMT Smith is providing medical care."*

Severity of Emergency / Transport Priority	<input type="checkbox"/> <b>RED / PRIORITY 1 Life or limb threatening injury or illness. Evacuation need is IMMEDIATE</b> <i>Ex: Unconscious, difficulty breathing, bleeding severely, 2° – 3° burns more than 4 palm sizes, heat stroke, disoriented.</i> <input type="checkbox"/> <b>YELLOW / PRIORITY 2 Serious Injury or illness. Evacuation may be DELAYED if necessary.</b> <i>Ex: Significant trauma, unable to walk, 2° – 3° burns not more than 1-3 palm sizes.</i> <input type="checkbox"/> <b>GREEN / PRIORITY 3 Minor Injury or illness. Non-Emergency transport</b> <i>Ex: Sprains, strains, minor heat-related illness.</i>	
Nature of Injury or Illness & Mechanism of Injury		Brief Summary of Injury or Illness <i>(Ex: Unconscious, Struck by Falling Tree)</i>
Evacuation Request		Air Ambulance / Short Haul/Hoist Ground Ambulance / Other
Patient Location		Descriptive Location & Lat. / Long. (WGS84)
Incident Name		Geographic Name + Medical <i>(Ex: Trout Meadow Medical)</i>
On-Scene Incident Commander		Name of on-scene IC of Incident within an Incident <i>(Ex: TFLD Jones)</i>
Patient Care		Name of Care Provider <i>(Ex: EMT Smith)</i>

**3. INITIAL PATIENT ASSESSMENT:** Complete this section for each patient as applicable (start with the most severe patient)

Patient Assessment: See IRPG PAGE 106

Treatment:

**4. EVACUATION PLAN:**

Evacuation Location (if different): (Descriptive Location (drop point, intersection, etc.) or Lat. / Long.) Patient's ETA to Evacuation Location:

Helispot / Extraction Site Size and Hazards:

**5. ADDITIONAL RESOURCES / EQUIPMENT NEEDS:**

*Example: Paramedic/EMT, crews, immobilization devices, AED, oxygen, trauma bag, IV/fluid(s), splints, rope rescue, wheeled litter, HAZMAT, extrication*

**6. COMMUNICATIONS: Identify State Air/Ground EMS Frequencies and Hospital Contacts as applicable**

Function	Channel Name/Number	Receive (RX)	Tone/NAC *	Transmit (TX)	Tone/NAC *
COMMAND					
AIR-TO-GRND					
TACTICAL					

**7. CONTINGENCY: Considerations:** If primary options fail, what actions can be implemented in conjunction with primary evacuation method? Be thinking ahead.

**8. ADDITIONAL INFORMATION:** Updates/Changes, etc.

**REMEMBER:** Confirm ETAs of resources ordered. Act according to your level of training. Be Alert. Keep Calm. Think Clearly. Act Decisively.