









ORGANIZATION ASSIGNMENT LIST	
1. Incident Name	
<b>Bedrock / Lookout / Horse Creek / Pothole / Pete's Lake</b>	
2. Date 09/19/2023	3. Time 1800
4. Operational Period 09/20/23 0700 – 09/21/23 0700	
<b>5. Incident Commander and Staff</b>	
Position	Name
Incident Commander	Jason Loomis / John Szulc (t) / Chris Hutsell (t)
Safety Officer	Marshall Brown / Rob Poyner / Mark Munns / Seth Williams (t)
Information Officer	Chris Barth / Mike Johnson / Jacob Welsh (t)
Liaison Officer	Lisa Machnik / Don Turner / Kristen Bonanno (t)
Human Resources	Teresa Smergut / Mike Baines
Medical Unit Leader	Dave O'Brien / Magenta Widner (t) / Mari Bottoms (t)

6. Agency Representative	
Agency	Name
USFS AA	WIL - Darren Cross / Gabe Wishart / Heath Perrine / Allen Hambrick / Sarah Clawson DES - Holly Jewkes / Robert Gentry
BAER Team	John Chatel / Wendy Peterman (t)
ODF AA	Chris Cline
ODF Agency Rep	John Flannigan / Craig Pettinger
BLM AA	Dennis Teitzel
Lane County Captain	JD Mann (Bedrock) / Cliff Harrold (Lookout)
Giustina Land and Timber	Kenny Rose
Fruit Growers	Jim Crawford
Campbell Group	Jim Hunt
Weyerhaeuser Group	Albert Kastle / Jeanne Olson
HJ Andrews Exper. Forest	Mark Schultz
Lead READ	Monty Kuk

7. Planning Section	
Position	Name
Chief	Scott Koehler / Trent Marty / Monica Ramirez (t)
SITL	Matt Provencher / Jason Thivener / Jerry Boggio (t) / Emily Bedard (t)
RESL	Nicole LaGioia
GISS	Mike Cibicki / Lexi Holder / William Otto / Chantelle Delay / Bryant Mecklem (t) / Tiffany Manger (t) / Frank Bifone (t)
DOCL	Paula Knapp
DEMOB	Brenda Bramwell
SCKN	Dina Peek
FBAN	Drew Taylor
IMET	Makoto Moore / Brian Adams (t)
LTAN	Joe Hernandez (t)
ARA	Josh Hall / Amara Holder (t)
TNSP	Neal Cox

8. Logistic Section	
Position	Name
Chief	Nick Swagger / Kent Koeller / Benjamin Goodin (t) / Tony Mule (t)
Supply Unit	Jaime Chopp / TJ Wharton / Dave Cooper
Facilities Unit	Cliff Piper / Russel Hovey
Food Unit	Debra Foote / Kristy Naughton

COML	Keith Brown
Ground Support	Carlos Velez / Duane Chatham / Michael Howard / Jeffrey Burdine (t)
ITSS	Jim Grace / Flint Buchman
SECM	Tyler Smith

9. Operations Section	
Lead Ops	Sonny Caldwell
Strategic Ops	Kyle Cannon
Field Ops	Terry Walter / Dan Trapanese (t)
Planning Ops	Brandon Lewis / Jacob Gear (t)

a. Branch Bedrock	
Branch Director	Chris Lundgren / Ken Foss (t)
Division North Repair	Wes Wentworth / Meg Fluharty (t)
Division South Repair	Ted Piehl / Shane Orser (t) / Patrick Blair (t)

b. Branch I	
Branch Director	Sam Tacchini / Josh Verellen (t)
Division A / C	Ian Quist / Eric Kiehn / Nathan Basford (t)
Division H	Eric Messenger / Zone Brown / Mike Starr (t)
Division L	Darek Pepple / Colbey Richmond (t)

c. Branch V	
Branch Director	Thom Taylor / Brian Bates (t)
Division P	Mark Munoz / Thomas Goheen
Division T	Cam Chambers / Kip Van DeWater (t)
Division Horse Creek / Pothole	Amy McClave / Cody St. Clair (t)
Division White Pine	Jeff Coburn / Matt Abell (t)

d. Pete's Lake	
Field Ops	Reggie Bray
Division	James Honanie / Chris Burford (t)

e. Lookout Staging	
Staging Manager	Todd Griffin

f. Roads Group	
Roads Bedrock North	Duane Chatham
Roads Bedrock South	Duane Chatham
Roads Lookout	Duane Chatham

g. Night	
Division Nights	Thad Niebel / Gary Crombie (t)

h. Air Operations Branch	
Branch Director	Cory Dolberry / Kyle Stump (t)
ASGS	Greg Scully / Kim Soule (t)
ATGS	Joe Tone

10. Finance Section	
Position	Name
Chief	Mariah Morris - Titus / Glenda Lindsay
Time Unit Leader	Linzy Scott / Eric Goddard (t)
Cost Unit Leader	Christy Graham
Equipment Time	Cynthia Sperling / Maria Trujillo / Dorothy Myers / William Devore / Miriam Hubbard (t)
Personnel Time	Shonni Nelson / Ana Bacoch (t) / JoAnne Gomez / Victoria Ramirez
Comp/Claims	Jessica McAloon / Amy Kenny (t)
Procurement	Juanita Dickson / Luis Carrillo (t)
ICPI	Doug Simler
COPA	Sonia Torres

Prepared by (Resource Unit Leader)  
Nicole LaGioia





# Fire Weather Forecast

## Wednesday September 20, 2023



**FORECAST NO:** 57      **FIRE:** Bedrock/Lookout/Horse Creek/  
Pothole/Pete's Lake

**PREDICTION FOR:** Wednesday, Sep 20, 2023      **UNIT:** Willamette N.F.

**ISSUED:** 2000, Sep 19, 2023      **Incident Meteorologist:** Brian Adams (T)

- **DISCUSSION:** An upper level low dropping through the area brings cooler temperatures, higher humidity, as well as chances for light rain early this morning, and again on Thursday.

### WEDNESDAY:

- **WEATHER:** Mostly cloudy with a 50% chance of showers between 0600-1200, becoming partly cloudy with a 20% chance of showers between 1200-1800, accumulations of 0.10" or less.
- **WIND (20 FT):**
  - **Lookout:** Valleys/Lwr Slopes: Downslope 3-5 mph through 1200, then NNW 4-8 mph. Ridges/Upper Slopes: NW 3-7 mph through 1200 then NNW 5-10 mph with gusts 13-18 mph.
  - **Petes Lake:** NW 4-8 mph through 1000, then NNW 10-15 mph with gusts to 20 mph through 2000.
- **MAX TEMPERATURES:** 53-58 valleys and mid-slopes, 43-49 ridges and Pete's Lake.
- **MIN RH:**
  - **Lookout:** 60-70%      **Petes Lake:** 55-65%
- **INVERSION:** Weak to none. **MID HAINES:** 3.

### WEDNESDAY NIGHT:

- **WEATHER:** Partly cloudy becoming mostly clear overnight.
- **WIND (20 FT):**
  - **Lookout:** Valleys/Lwr Slopes: Downslope 2-5 mph. Ridges/Upr Slopes: NNE 3-8 mph.
  - **Petes Lake:** NNE 4-9 mph.
- **MIN TEMPERATURES:** **Lookout:** 40-45. **Petes Lake:** 34-39.
- **MAX RH:**
  - **Lookout:** 90-100%      **Petes Lake:** 75-85%

### THURSDAY:

- **WEATHER:** Mostly clear in the morning becoming mostly cloudy in the afternoon. 30% chance of light showers between 1100-1800, accumulations of 0.10" or less.
- **WIND (20 FT):**
  - **Lookout:** Valleys/Lwr Slopes: Downslope 3-5 mph through 1200, then NNE 5-9 mph. Ridges/Upper Slopes: NNE 3-7 mph through 1200 then NNE 6-10 mph with gusts 12-17 mph.
  - **Petes Lake:** N 3-7 mph through 1100, then NNE 10-15 mph with gusts 20-25 mph through 2000.
- **MAX TEMPERATURES:** 58-63 valleys and mid-slopes, 45-52 ridges and Pete's Lake.
- **MIN RH:**
  - **Lookout:** 50-60%      **Petes Lake:** 55-65%
- **INVERSION:** Weak to none. **MID HAINES:** 3.

**Extended outlook:** Friday through Monday: Slightly warmer highs Friday and Saturday with typical diurnal winds and good to excellent morning humidity recovery. A storm system approaches late Sunday, increasing chances for widespread wetting rainfall on Monday.

**Sunrise:** 06:58 PDT      **Sunset:** 19:15 PDT

## FIRE BEHAVIOR FORECAST

<b>FORECAST NUMBER:</b> 39	<b>TYPE OF FIRE:</b> Wildfire
<b>FIRE NAME:</b> Lookout/Bedrock/Horse Creek/Pothole/Pete's Lake	<b>OPERATIONAL PERIOD:</b> 09/20/2023 (day/night)
<b>DATE ISSUED:</b> 09/19/2023	<b>TIME ISSUED:</b> 2000 Hours
<b>UNIT:</b> OR-WIF, Willamette National Forest	<b>SIGNED:</b> ANDREW TAYLOR <small>Digitally signed by ANDREW TAYLOR Date: 2023.09.19 19:09:44 -0700</small>

### INPUTS

**WEATHER SUMMARY:** *Cooling and wetting weather pattern persisting through the week.*

**FUELS:**

More significant cooling and wetting trend settles in for the next 2 days. Expect temperatures decreasing and RH values increasing over the next few days and for the near future. High daytime RH values, good overnight Humidity recoveries, and probabilities of precipitation will contribute to dampened fire behavior on all fires. There is a chance of precipitation over all the fires starting Wednesday morning and again on Thursday. After a slight break on Friday and Saturday, continued storms move into the area bringing chances of widespread precipitation on Sunday, with increasing chances of wetting rains Monday and Tuesday.

### OUTPUTS

**FIRE BEHAVIOR GENERAL:**

Moderate fire weather conditions are expected to continue through the week and even through the weekend. Dead and down fuel loading in timber will be the primary burnable fuels on any of the fires. The fires have been reliant on sunlight, hot temperatures and low RH values, which will not occur over the next several days. There will be a sharp decline in fire behavior on all fires with primary activity being smoldering and creeping in duff and heavy down and dead fuels.



**Based on Peak Wx and Fuels conditions:**

- Fine Dead Fuel Moisture- 13% Petes Lake, 12% Lookout
- Probability of Ignition 10-20.
- Short range spotting through rollout and snagfall

**FIRE BEHAVIOR SPECIFIC:**

**Pete's Lake Fire:** Expect very little fire behavior due to cold temperatures and high daytime and overnight RH values. Primary fire activity will be in duff and dead and down heavy fuels. Growth of the fire is not expected other than by roll out on steep slopes, but conditions will limit spotting potential greatly.

**Lookout Fire:** Continued consumption of dead and down heavy fuels and smoldering of duff. Little to no spread other than through roll out. Spotting potential little to none.

**Bedrock, Pothole, and Horse Creek:** Continued consumption and smoldering of interior pockets. No growth predicted.

**IA** – New starts will present low resistance to control with current weather conditions.

**AIR OPERATIONS:**

Consider the weather before ordering aircraft for any operational mission.

### SAFETY

Don't become complacent with diminished fire behavior. The weather can introduce different hazards, and any precipitation can propagate falling of fire weakened and green trees.





**Division/Group Assignment List (ICS 204 WF)**  
**Controlled Unclassified Information//Basic**

<b>1. Incident Name:</b>				<b>3.</b>			
BEDROCK LOOKOUT				<b>Branch:</b>		<b>Division/Group</b>	
<b>2. Operational Period:</b> DAY / NIGHT				BEDROCK		NORTH REPAIR	
Date/Time From: 09/20/2023 0700 WED		Date/Time To: 09/21/2023 0700 THU					
<b>4. Operations Personnel</b>							
<b>FIELD OPS</b>		TERRY WALTER DAN TRAPANESE (T)		<b>BRANCH DIRECTOR</b>		CHRIS LUNDGREN KEN FOSS (T)	
<b>AIR ATTACK SUPERVISOR</b>		JOE TONE		<b>DIVISION/GROUP SUPERVISOR</b>		WES WENTWORTH (LWD 9/27) MEG FLUHARTY (LWD 10/1) (T)	
<b>5. Resources Assigned this Period</b>							
Strike Team / Task Force / Resource Designator		LWD	Leader	Number Persons	Drop Off PT./Time	Pick Up PT./Time	
TFLD O-730		09/24	QUINLAN ANDERSON	1	LOOKOUT ICP/0700	LOOKOUT ICP/2000	
TFLD (T) O-596		09/26	KELLY SENSECQUA	1	LOOKOUT ICP/0700	LOOKOUT ICP/2000	
TFLD (T) O-731		09/24	SEQUOIA GJERDE	1	LOOKOUT ICP/0700	LOOKOUT ICP/2000	
HEQB O-721		09/25	KYLER KNAPP	1	LOOKOUT ICP/0700	LOOKOUT ICP/2000	
HEQB O-728		09/22	OLIVER BOSSERT	1	LOOKOUT ICP/0700	LOOKOUT ICP/2000	
HEQB O-732		09/27	JAIME MARISCAL	1	LOOKOUT ICP/0700	LOOKOUT ICP/2000	
HEQB (T) O-814		09/27	JOSH VIERRIA	1	LOOKOUT ICP/0700	LOOKOUT ICP/2000	
HEQB O-812		10/01	JAYDEN CHYNOWETH	1	LOOKOUT ICP/0700	LOOKOUT ICP/2000	
FELB O-738		09/27	CHRIS WENNOGLE	1	LOOKOUT ICP/0700	LOOKOUT ICP/2000	
FMOD O-722 CUT RITE INC - DULE 6		09/21	JOHN MULLENIX	2	LOOKOUT ICP/0700	LOOKOUT ICP/2000	
FMOD O-862 TOMS TIMBER LLC -		10/03	TRAVIS LOCKWOOD	2	LOOKOUT ICP/0700	LOOKOUT ICP/2000	
HC2IAI C-91 PACIFIC OASIS 14A		09/20	NICK LOPEZ	20	LOOKOUT ICP/0700	LOOKOUT ICP/2000	
HC2 C-81 1ST CHOICE CONTRACTING (BDRK)		09/29	ENRIQUE MANZO	20	LOOKOUT ICP/0700	LOOKOUT ICP/2000	
HC2 C-103 FRANCO REFORESTATION C-1		10/01	ARMANDO CASTRO	20	LOOKOUT ICP/0700	LOOKOUT ICP/2000	
ENG6 E-662 FIRST STRIKE ENVIRONMENTAL		10/01	SPENCER BERLIER	3	LOOKOUT ICP/0700	LOOKOUT ICP/2000	
ENG4 E-665 FIREMOG		10/01	MIKE PARENT	3	LOOKOUT ICP/0700	LOOKOUT ICP/2000	
EXC1 E-545 EERA - BFC LIMITED		09/29	TODD WEST	2	LOOKOUT ICP/0700	LOOKOUT ICP/2000	
EXC2 E-227 DEAN INNOVATIONS		10/07	SCOTT SIMMONS	2	LOOKOUT ICP/0700	LOOKOUT ICP/2000	
EXC2 E-468 4-Q TIMBER		10/01	ANTHONY BALDWIN	2	LOOKOUT ICP/0700	LOOKOUT ICP/2000	
EXC2 E-510 OUTBACK WILDFIRE		09/24	DAVE ELLIS	2	LOOKOUT ICP/0700	LOOKOUT ICP/2000	
<b>8. Division/Group Communication Summary</b>							
Function	Channel	RX Frequency N/W	RX Tone/NAC	TX Frequency N/W	TX Tone/NAC	Mode	
TACTICAL	SEE COM PLAN						
COMMAND	SEE COM PLAN						
<b>9. Prepared By (Resource Unit Leader)</b>			<b>Approved By (Planning Section Chief)</b>		<b>Date</b>	<b>Time</b>	
NICOLE LAGIOIA			MONICA RAMIREZ		09/19/2023	2000	



**Division/Group Assignment List (ICS 204 WF)**  
**Controlled Unclassified Information//Basic**

<b>1. Incident Name:</b>				<b>3.</b>		
BEDROCK LOOKOUT				Branch:  BEDROCK	Division/Group  NORTH REPAIR	
<b>2. Operational Period: DAY / NIGHT</b>						
Date/Time From: 09/20/2023 0700 WED		Date/Time To: 09/21/2023 0700 THU				
<b>4. Operations Personnel</b>						
<b>FIELD OPS</b>		TERRY WALTER DAN TRAPANESE (T)		<b>BRANCH DIRECTOR</b>		CHRIS LUNDGREN KEN FOSS (T)
<b>AIR ATTACK SUPERVISOR</b>		JOE TONE		<b>DIVISION/GROUP SUPERVISOR</b>		WES WENTWORTH (LWD 9/27) MEG FLUHARTY (LWD 10/1) (T)
<b>5. Resources Assigned this Period</b>						
Strike Team / Task Force / Resource Designator		LWD	Leader	Number Persons	Drop Off PT./Time	Pick Up PT./Time
SKD1 E-299 MARK JONES		09/27	CASEY HUNTLEY	2	LOOKOUT ICP/0700	LOOKOUT ICP/2000
CHP1 E-531 TOP NOTCH		10/02	KYLE ARMIJO	2	LOOKOUT ICP/0700	LOOKOUT ICP/2000
CHP1 E-543 BFC LIMITED		09/29	TODD WEST	2	LOOKOUT ICP/0700	LOOKOUT ICP/2000
CHP1 E-544 AXSUS ENTERPRISES		09/29	TODD WEST	2	LOOKOUT ICP/0700	LOOKOUT ICP/2000
CHP2 E-481 BIG BARK CHIPPER (BDRK)		09/21	JACKIE LANGE	3	LOOKOUT ICP/0700	LOOKOUT ICP/2000
CHP2 E-505 SAYLOR CONSTRUCTION (BDRK)		09/24	CALEB FINK	3	LOOKOUT ICP/0700	LOOKOUT ICP/2000
CHSL E-532 EERA - BFC LIMITED		09/25	FORTINO LARIOS	2	LOOKOUT ICP/0700	LOOKOUT ICP/2000
WTS1 E-458 SASQUATCH HI-MT WATER		09/23		1	LOOKOUT ICP/0700	LOOKOUT ICP/2000
WTS2 E-370 LEE ROY BELLOIR & SONS (BDRK)		09/24	ROGER BELLIOR	1	LOOKOUT ICP/0700	LOOKOUT ICP/2000
FRNT E-656 EERA - ROSE LOGGING		09/30	ROB MCCOLLOUGH	2	LOOKOUT ICP/0700	LOOKOUT ICP/2000
DUMP E-652 EERA - MARK JONES TRUCKING		10/01	JERRY WOLFORD	2	LOOKOUT ICP/0700	LOOKOUT ICP/2000
DUMP E-653 EERA - MARK JONES TRUCKING		10/01	BUDDY CLEGG	1	LOOKOUT ICP/0700	LOOKOUT ICP/2000
LOGP E-333 AXSUS		10/01	SKYLER WILSON	2	LOOKOUT ICP/0700	LOOKOUT ICP/2000
LOGP E-334 AXSUS		10/01	JOSE SERANO	2	LOOKOUT ICP/0700	LOOKOUT ICP/2000
LOGL E-512 BRINK BROTHERS (BDRK)		09/25	JASON LEWIS	2	LOOKOUT ICP/0700	LOOKOUT ICP/2000
LOGT E-526 MARK JONES #1		09/30	RON ELLIOTT	1	LOOKOUT ICP/0700	LOOKOUT ICP/2000
TUBG E-542 BRINK BROTHERS		09/27	ROBERT BRINK	2	LOOKOUT ICP/0700	LOOKOUT ICP/2000
SOFR O-830		10/03	LUCAS DIXON	1	LOOKOUT ICP/0700	LOOKOUT ICP/2000
SOFC (T) O-604		09/20	MATTHEW INGRAM	1	LOOKOUT ICP/0700	LOOKOUT ICP/2000
E-277 AMBO 15		09/26	LUCY CUMMINS	2	LOOKOUT ICP/0700	LOOKOUT ICP/2000
O-423 REMS 43		09/23	KAMRON GREER	4	LOOKOUT ICP/0700	LOOKOUT ICP/2000
<b>8. Division/Group Communication Summary</b>						
Function	Channel	RX Frequency N/W	RX Tone/NAC	TX Frequency N/W	TX Tone/NAC	Mode
TACTICAL	SEE COM PLAN					
COMMAND	SEE COM PLAN					
<b>9. Prepared By (Resource Unit Leader)</b>			<b>Approved By (Planning Section Chief)</b>		<b>Date</b>	<b>Time</b>
NICOLE LAGIOIA			MONICA RAMIREZ		09/19/2023	2000

**Division/Group Assignment List (ICS 204 WF)**  
**Controlled Unclassified Information//Basic**

<b>1. Incident Name:</b>				<b>3.</b>		
BEDROCK LOOKOUT				<b>Branch:</b>  BEDROCK	<b>Division/Group</b>  NORTH REPAIR	
<b>2. Operational Period:</b> DAY / NIGHT						
Date/Time From: 09/20/2023 0700 WED		Date/Time To: 09/21/2023 0700 THU				
<b>4. Operations Personnel</b>						
<b>FIELD OPS</b>		TERRY WALTER DAN TRAPANESE (T)		<b>BRANCH DIRECTOR</b>		CHRIS LUNDGREN KEN FOSS (T)
<b>AIR ATTACK SUPERVISOR</b>		JOE TONE		<b>DIVISION/GROUP SUPERVISOR</b>		WES WENTWORTH (LWD 9/27) MEG FLUHARTY (LWD 10/1) (T)
<b>5. Resources Assigned this Period</b>						
<b>Strike Team / Task Force / Resource Designator</b>		<b>LWD</b>	<b>Leader</b>	<b>Number Persons</b>	<b>Drop Off PT./Time</b>	<b>Pick Up PT./Time</b>
O-424 MEDIC TEAM 38		09/22	BRANTON THOMPSON	2	LOOKOUT ICP/0700	LOOKOUT ICP/2000
REAF O-284		09/22	MIKE LARMAN	1	LOOKOUT ICP/0700	LOOKOUT ICP/2000
REAF O-696		09/24	DONALD YOUKEY	1	LOOKOUT ICP/0700	LOOKOUT ICP/2000
REAF O-805		10/02	ELLIOTT WHARTON	1	LOOKOUT ICP/0700	LOOKOUT ICP/2000
REAF O-818			BRANDYN CHILD	1	LOOKOUT ICP/0700	LOOKOUT ICP/2000
<b>6. Control Operations/Work Assignments:</b>						
<p><u>Task:</u> Continue with log hauling operations along the 18 and spur roads. Repair dozerline utilizing excavators from DP-122 to DP-208. Utilize hand crew to repair existing hand lines. Continue chipping operations throughout the Division. Utilize engines to patrol fire perimeter and address smoke and areas of heat as necessary.</p> <p><u>Purpose:</u> Aid in the completion of repair efforts to areas disturbed by wildfire suppression.</p> <p><u>End State:</u> Complete fire suppression repair activities north and west of DP123 and north and east of DP205. Follow actions outlined in the suppression repair plan.</p>						
<b>7. Special Instructions:</b>						
<p>BAER team members will be working in Divisions North Repair and South Repair. BAER team will notify DIVS when working in North or South Repair.</p> <p><b>Needs:</b> HEQB x 2; TFLD x 2; FMOD x 1; TFLD(t) x 1</p>						
<b>8. Division/Group Communication Summary</b>						
<b>Function</b>	<b>Channel</b>	<b>RX Frequency N/W</b>	<b>RX Tone/NAC</b>	<b>TX Frequency N/W</b>	<b>TX Tone/NAC</b>	<b>Mode</b>
TACTICAL	SEE COM PLAN					
COMMAND	SEE COM PLAN					
<b>9. Prepared By (Resource Unit Leader)</b>			<b>Approved By (Planning Section Chief)</b>		<b>Date</b>	<b>Time</b>
NICOLE LAGIOIA			MONICA RAMIREZ		09/19/2023	2000



**Division/Group Assignment List (ICS 204 WF)**  
**Controlled Unclassified Information//Basic**

1. Incident Name:				3.			
BEDROCK LOOKOUT				Branch:		Division/Group	
2. Operational Period: DAY / NIGHT				BEDROCK		SOUTH REPAIR	
Date/Time From: 09/20/2023 0700 WED		Date/Time To: 09/21/2023 0700 THU					
4. Operations Personnel							
FIELD OPS		TERRY WALTER DAN TRAPANESE (T)		BRANCH DIRECTOR		CHRIS LUNDGREN KEN FOSS (T)	
AIR ATTACK SUPERVISOR		JOE TONE		DIVISION/GROUP SUPERVISOR		TED PIEHL (LWD 9/27) SHANE ORSER / PATRICK BLAIR (T)	
5. Resources Assigned this Period							
Strike Team / Task Force / Resource Designator		LWD	Leader	Number Persons	Drop Off PT./Time	Pick Up PT./Time	
HEQB O-732		09/28	BRIAN JOHNSON	1	LOOKOUT ICP/0700	LOOKOUT ICP/2000	
HEQB O-838		09/24	BRYAN VESCE	1	LOOKOUT ICP/0700	LOOKOUT ICP/2000	
HEQB (T) O-742		09/28	DEREK DOMIS	1	LOOKOUT ICP/0700	LOOKOUT ICP/2000	
HEQB (T) O-839		09/23	DANA MASTROIANNI	1	LOOKOUT ICP/0700	LOOKOUT ICP/2000	
FMOD O-795 HANDCCUTTING		09/29	CORY KEFFER	2	LOOKOUT ICP/0700	LOOKOUT ICP/2000	
HC2 C-100 MR CONTRACTING C-2		09/30	**SEE FINANCE**	20	LOOKOUT ICP/0700	LOOKOUT ICP/2000	
HC2 C-101 MR CONTRACTING C-1		09/30	TOMAS GUZMAN GARCIA	20	LOOKOUT ICP/0700	LOOKOUT ICP/2000	
HC2 C-104 WILLAMETTE VALLEY REFOR. C-7		10/02	JAVIER GUZMAN	20	LOOKOUT ICP/0700	LOOKOUT ICP/2000	
ENG4 E-1 J3 CONTRACTING (BDRK)		09/21	DAN TEGART	3	LOOKOUT ICP/0700	LOOKOUT ICP/2000	
*ENG4 E-268 AAA THUNDERBOLT		09/25	MONTIE REYNOLDS	3	LOOKOUT ICP/0700	LOOKOUT ICP/2000	
ENG4 E-664 FIREMOG		10/02	JACE HOFFMAN	3	LOOKOUT ICP/0700	LOOKOUT ICP/2000	
ENG4 E-666 TORRES CONTRACTING		10/02	JUAN TORRES	3	LOOKOUT ICP/0700	LOOKOUT ICP/2000	
EXC1 E-546 EERA - AXSUS ENTERPRISES		09/28	CHARLES MAINWARING	2	LOOKOUT ICP/0700	LOOKOUT ICP/2000	
EXC2 E-654 EARNEST HEATHER		10/01	MITCH GRIFFITH	2	LOOKOUT ICP/0700	LOOKOUT ICP/2000	
EXC2 E-655 ZEB'S TREE SERVICE		10/01	CAMERON HOMES	2	LOOKOUT ICP/0700	LOOKOUT ICP/2000	
WTS2 E-323 THOMAS H. IRELAND (BDRK)		09/24	RYAN CHANDLER	1	LOOKOUT ICP/0700	LOOKOUT ICP/2000	
SOFR O-830		10/03	LUCAS DIXON	1	LOOKOUT ICP/0700	LOOKOUT ICP/2000	
SOFC (T) O-604		09/20	MATTHEW INGRAM	1	LOOKOUT ICP/0700	LOOKOUT ICP/2000	
E-14 AMBO 10 (BDRK)		09/28	ANDRE MARTONI	2	LOOKOUT ICP/0700	LOOKOUT ICP/2000	
8. Division/Group Communication Summary							
Function	Channel	RX Frequency N/W	RX Tone/NAC	TX Frequency N/W	TX Tone/NAC	Mode	
TACTICAL	SEE COM PLAN						
COMMAND	SEE COM PLAN						
9. Prepared By (Resource Unit Leader)			Approved By (Planning Section Chief)		Date	Time	
NICOLE LAGIOIA			MONICA RAMIREZ		09/19/2023	2000	



**Division/Group Assignment List (ICS 204 WF)**  
 Controlled Unclassified Information//Basic

<b>1. Incident Name:</b>			<b>3.</b>			
BEDROCK LOOKOUT			<b>Branch:</b>		<b>Division/Group</b>	
<b>2. Operational Period: DAY / NIGHT</b>			BEDROCK		SOUTH REPAIR	
Date/Time From: 09/20/2023 0700 WED	Date/Time To: 09/21/2023 0700 THU					
<b>4. Operations Personnel</b>						
<b>FIELD OPS</b>		TERRY WALTER DAN TRAPANESE (T)	<b>BRANCH DIRECTOR</b>		CHRIS LUNDGREN KEN FOSS (T)	
<b>AIR ATTACK SUPERVISOR</b>		JOE TONE	<b>DIVISION/GROUP SUPERVISOR</b>		TED PIEHL (LWD 9/27) SHANE ORSER / PATRICK BLAIR (T)	
<b>5. Resources Assigned this Period</b>						
Strike Team / Task Force / Resource Designator	LWD	Leader	Number Persons	Drop Off PT./Time	Pick Up PT./Time	
O-554 EMT 119	09/24	NADIA JENMAN	1	LOOKOUT ICP/0700	LOOKOUT ICP/2000	
REAF O-284	09/22	MIKE LARMAN	1	LOOKOUT ICP/0700	LOOKOUT ICP/2000	
REAF O-727	09/22	NOAH HEIDENREICH	1	LOOKOUT ICP/0700	LOOKOUT ICP/2000	
REAF O-725	09/24	OLIVIA GUTHRIE	1	LOOKOUT ICP/0700	LOOKOUT ICP/2000	
REAF O-726	09/22	SHANNON MCCOY	1	LOOKOUT ICP/0700	LOOKOUT ICP/2000	
ARCH O-807	10/01	JENNIFER HERNANDEZ	1	LOOKOUT ICP/0700	LOOKOUT ICP/2000	
REAF O-818		BRANDYN CHILD	1	LOOKOUT ICP/0700	LOOKOUT ICP/2000	
<b>6. Control Operations/Work Assignments:</b>						
<p><u>Task:</u> Utilize crews to mop up, continue dozer/handline repair and backhaul of unneeded equipment. Utilize heavy equipment to continue with dozer line and drainage repair. Utilize engines to patrol fire perimeter and address smoke and areas of heat as necessary.</p> <p><u>Purpose:</u> Restore lands impacted by wildfire and suppression tactics.</p> <p><u>End State:</u> Lands restored.</p>						
<b>7. Special Instructions:</b>						
<p>*Denotes resources for Initial Attack (IA)</p> <p>BAER team members will be working in Divisions North Repair and South Repair. BAER team will notify DIVS when working in North or South Repair.</p> <p><b>Needs:</b> TFLD x 2; TFLD (t) x 1</p>						
<b>8. Division/Group Communication Summary</b>						
Function	Channel	RX Frequency N/W	RX Tone/NAC	TX Frequency N/W	TX Tone/NAC	Mode
TACTICAL	SEE COM PLAN					
COMMAND	SEE COM PLAN					
<b>9. Prepared By (Resource Unit Leader)</b>		<b>Approved By (Planning Section Chief)</b>		<b>Date</b>	<b>Time</b>	
NICOLE LAGIOIA		MONICA RAMIREZ		09/19/2023	2000	

**Division/Group Assignment List (ICS 204 WF)**  
**Controlled Unclassified Information//Basic**

<b>1. Incident Name:</b>				<b>3.</b>		
BEDROCK LOOKOUT				Branch:  I	Division/Group  A / C	
<b>2. Operational Period:</b> DAY / NIGHT						
Date/Time From: 09/20/2023 0700 WED		Date/Time To: 09/21/2023 0700 THU				
<b>4. Operations Personnel</b>						
FIELD OPS		TERRY WALTER DAN TRAPANESE (T)		BRANCH DIRECTOR		SAM TACCHINI JOSH VERELLEN (T)
AIR ATTACK SUPERVISOR		JOE TONE		DIVISION/GROUP SUPERVISOR		IAN QUIST (LWD 9/20) / ERIC KIEHN NATHAN BASFORD (LWD 9/25) (T)
<b>5. Resources Assigned this Period</b>						
Strike Team / Task Force / Resource Designator		LWD	Leader	Number Persons	Drop Off PT./Time	Pick Up PT./Time
TFLD (T) O-652		09/20	GAVIN YOUNG	1	LOOKOUT ICP/0700	LOOKOUT ICP/2000
FMOD O-794 FALLER MODULE		09/29	CHRIS REED	2	LOOKOUT ICP/0700	LOOKOUT ICP/2000
HC2 C-102 FRANCO REFORESTATION C-2		10/01	FRANCIS LEE FRANCO	20	LOOKOUT ICP/0700	LOOKOUT ICP/2000
ENG3 E-524 WILDLAND SUPRT TM		09/29	MIKE JARAMILLO	3	LOOKOUT ICP/0700	LOOKOUT ICP/2000
ENG4 E-633 NVEKD E1444		09/26	BLAKE JONES	4	LOOKOUT ICP/0700	LOOKOUT ICP/2000
ENG4 E-680 NORTH PACIFIC FORESTRY					LOOKOUT ICP/0700	LOOKOUT ICP/2000
SKD1 E-671 MKS LOGISTICS		10/01	SHANE HUFFMAN	2	LOOKOUT ICP/0700	LOOKOUT ICP/2000
EXC2 E-541 VALLEY TIMBER		09/25	NELSON TREAVOR	2	LOOKOUT ICP/0700	LOOKOUT ICP/2000
SOFR O-715.99		09/30	RYDER JONES	1	LOOKOUT ICP/0700	LOOKOUT ICP/2000
SOFR (T) O-720		09/24	PATRICK ROMPORTL	1	LOOKOUT ICP/0700	LOOKOUT ICP/2000
E-433 AMBO 308		09/24	ALI HAMMOUDEH	2	LOOKOUT ICP/0700	LOOKOUT ICP/2000
O-676 MEDIC 222		09/23	RITVIK CHAKRABORTY	1	LOOKOUT ICP/0700	LOOKOUT ICP/2000
REAF O-475		09/21	CAYLA KENNEDY	1	LOOKOUT ICP/0700	LOOKOUT ICP/2000
REAF O-693		09/23	MARK LEIS	1	LOOKOUT ICP/0700	LOOKOUT ICP/2000
<b>6. Control Operations/Work Assignments:</b>						
<p><u>Task:</u> Complete repair work in Division A. Extinguish all areas of concern for escape between DP78 to DP11. Monitor and secure fire above 360 road.</p> <p><u>Purpose:</u> Repair fire impacts and minimize fire impacts to private residences and HJ Experimental Forest infrastructure.</p> <p><u>End State:</u> Infrastructure and other areas to be protected between DP78 to DP11 have been secured. Fire impacts have been returned to their previous conditions to the extent possible.</p>						
<b>7. Special Instructions:</b>						
<b>8. Division/Group Communication Summary</b>						
Function	Channel	RX Frequency N/W	RX Tone/NAC	TX Frequency N/W	TX Tone/NAC	Mode
TACTICAL	SEE COM PLAN					
COMMAND	SEE COM PLAN					
<b>9. Prepared By (Resource Unit Leader)</b>			<b>Approved By (Planning Section Chief)</b>		<b>Date</b>	<b>Time</b>
NICOLE LAGIOIA			MONICA RAMIREZ		09/19/2023	2000



**Division/Group Assignment List (ICS 204 WF)**  
Controlled Unclassified Information//Basic

1. Incident Name:				3.			
BEDROCK LOOKOUT				Branch:		Division/Group	
2. Operational Period: DAY / NIGHT				I		A / C	
Date/Time From: 09/20/2023 0700 WED		Date/Time To: 09/21/2023 0700 THU					
4. Operations Personnel							
FIELD OPS		TERRY WALTER DAN TRAPANESE (T)		BRANCH DIRECTOR		SAM TACCHINI JOSH VERELLEN (T)	
AIR ATTACK SUPERVISOR		JOE TONE		DIVISION/GROUP SUPERVISOR		IAN QUIST (LWD 9/20) / ERIC KIEHN NATHAN BASFORD (LWD 9/25) (T)	
7. Special Instructions:							
Begin rehab on contingency lines in Division A.							
Continue to improve contingency lines in Division A							
<b>Needs:</b> HEQB x 1; LOGL (tracked) x 1; ENG6 x1; LOGP x 1; TFLD x 1; FORW x 1							
8. Division/Group Communication Summary							
Function	Channel	RX Frequency N/W	RX Tone/NAC	TX Frequency N/W	TX Tone/NAC	Mode	
TACTICAL	SEE COM PLAN						
COMMAND	SEE COM PLAN						
9. Prepared By (Resource Unit Leader)			Approved By (Planning Section Chief)			Date	Time
NICOLE LAGIOIA			MONICA RAMIREZ			09/19/2023	2000



**Division/Group Assignment List (ICS 204 WF)**  
**Controlled Unclassified Information//Basic**

<b>1. Incident Name:</b>				<b>3.</b>			
BEDROCK LOOKOUT				<b>Branch:</b>		<b>Division/Group</b>	
<b>2. Operational Period:</b> DAY / NIGHT				I		H	
Date/Time From: 09/20/2023 0700 WED		Date/Time To: 09/21/2023 0700 THU					
<b>4. Operations Personnel</b>							
<b>FIELD OPS</b>		TERRY WALTER DAN TRAPANESE (T)		<b>BRANCH DIRECTOR</b>		SAM TACCHINI JOSH VERELLEN (T)	
<b>AIR ATTACK SUPERVISOR</b>		JOE TONE		<b>DIVISION/GROUP SUPERVISOR</b>		MESSENGER (LWD 9/21) / BROWN MIKE STARR (LWD 9/21) (T)	
<b>5. Resources Assigned this Period</b>							
Strike Team / Task Force / Resource Designator		LWD	Leader	Number Persons	Drop Off PT./Time	Pick Up PT./Time	
TFLD O-700		09/25	KEITH CRAIN	1	LOOKOUT ICP/0700	LOOKOUT ICP/2000	
TFLD (T) O-699		09/23	JOSUE GONZALEZ	1	LOOKOUT ICP/0700	LOOKOUT ICP/2000	
HEQB O-744		09/26	ADAM HUMBACH	1	LOOKOUT ICP/0700	LOOKOUT ICP/2000	
FMOD O-706 TIMBER TIPPER		09/23	GABE REDDEKOPP	2	LOOKOUT ICP/0700	LOOKOUT ICP/2000	
FMOD O-837 TOMS TIMBER		10/02	STEVEN JOSH	2	LOOKOUT ICP/0700	LOOKOUT ICP/2000	
FMOD O-861 WEST COAST CUTTING		10/02	BALDO MACIEL	2	LOOKOUT ICP/0700	LOOKOUT ICP/2000	
HC2 C-99 BIG BARK CHIPPERS #2		10/01	CHESTER FULBRIGHT	20	LOOKOUT ICP/0700	LOOKOUT ICP/2000	
HC2 C-106 TOM FERY FARM C-1		10/03	SERAFIN GARCIA	20	LOOKOUT ICP/0700	LOOKOUT ICP/2000	
ENG3 E-301 HEK JONES		09/25	DANIEL SULLIVAN	3	LOOKOUT ICP/0700	LOOKOUT ICP/2000	
ENG6 E-507 R & R CONTRACTING		09/20	STEVEN KAUS	3	LOOKOUT ICP/0700	LOOKOUT ICP/2000	
ENG6 E-508 EARTH INDUSTRIES		09/20	STEPHEN PLUMLEE	3	LOOKOUT ICP/0700	LOOKOUT ICP/2000	
ENG6 E-630 OR-MAF - 43		09/25	KENNETH TRAPERO	6	LOOKOUT ICP/0700	LOOKOUT ICP/2000	
ENG6 E-660 FIRST STRIKE		10/01	ZANDER HAMILTON	3	LOOKOUT ICP/0700	LOOKOUT ICP/2000	
ENG6 E-682 OR-DEF - 652		10/03	BRANDON R BROWN	6	LOOKOUT ICP/0700	LOOKOUT ICP/2000	
DZR2 E-27 J B LOGGING		10/01	JOEL HERBST	2	LOOKOUT ICP/0700	LOOKOUT ICP/2000	
SKD1 E-25 RUSSELL		09/25	MARSHAL MECHAM	2	LOOKOUT ICP/0700	LOOKOUT ICP/2000	
SKG1 E-320 BOULDER RIDGE		09/24	TOM HOUPT	2	LOOKOUT ICP/0700	LOOKOUT ICP/2000	
SKG2 E-181 ZEB'S TREE SERVICE (BDRK)		09/22	DARRYL KUEHL	2	LOOKOUT ICP/0700	LOOKOUT ICP/2000	
FEL1 E-648 BFC LIMITED		09/28	SHERI ROTH	2	LOOKOUT ICP/0700	LOOKOUT ICP/2000	
<b>8. Division/Group Communication Summary</b>							
Function	Channel	RX Frequency N/W	RX Tone/NAC	TX Frequency N/W	TX Tone/NAC	Mode	
TACTICAL	SEE COM PLAN						
COMMAND	SEE COM PLAN						
<b>9. Prepared By (Resource Unit Leader)</b>			<b>Approved By (Planning Section Chief)</b>		<b>Date</b>	<b>Time</b>	
NICOLE LAGIOIA			MONICA RAMIREZ		09/19/2023	2000	

**Division/Group Assignment List (ICS 204 WF)**  
**Controlled Unclassified Information//Basic**

1. Incident Name:			3.			
BEDROCK LOOKOUT			Branch:		Division/Group	
2. Operational Period: DAY / NIGHT			I		H	
Date/Time From: 09/20/2023 0700 WED	Date/Time To: 09/21/2023 0700 THU					
4. Operations Personnel						
FIELD OPS	TERRY WALTER DAN TRAPANESE (T)		BRANCH DIRECTOR	SAM TACCHINI JOSH VERELLEN (T)		
AIR ATTACK SUPERVISOR	JOE TONE		DIVISION/GROUP SUPERVISOR	MESSENGER (LWD 9/21) / BROWN MIKE STARR (LWD 9/21) (T)		
5. Resources Assigned this Period						
Strike Team / Task Force / Resource Designator	LWD	Leader	Number Persons	Drop Off PT./Time	Pick Up PT./Time	
CHP1 E-335 AXSUS	09/27	MIKE FOWLER	2	LOOKOUT ICP/0700	LOOKOUT ICP/2000	
CHP1 E-536 AXSUS ENTERPRISES	10/02	DAVID BERGQUIST	2	LOOKOUT ICP/0700	LOOKOUT ICP/2000	
WTS1 E-374 M AND D	09/27	DEEZ JEFF	1	LOOKOUT ICP/0700	LOOKOUT ICP/2000	
WTS2 E-69 SUZANNE FINE	09/24	DANIEL ROSS	1	LOOKOUT ICP/0700	LOOKOUT ICP/2000	
WTS2 E-667 TIMBER TIPPER ENT	10/02	CHAD ASHBAUGH	1	LOOKOUT ICP/0700	LOOKOUT ICP/2000	
WTS2 E-668 COASTAL RANGE FIRE	10/02	SEAN BOEHLJE	1	LOOKOUT ICP/0700	LOOKOUT ICP/2000	
SOFR O-715.99	09/30	RYDER JONES	1	LOOKOUT ICP/0700	LOOKOUT ICP/2000	
SOFR(T) O-720	09/24	PATRICK ROMPORTL	1	LOOKOUT ICP/0700	LOOKOUT ICP/2000	
E-36 FIRELINE (AMBO 303)	09/21	KYLE MEAD	2	LOOKOUT ICP/0700	LOOKOUT ICP/2000	
O-762 MEDIC 228	09/27	KYLE KEMERER	1	LOOKOUT ICP/0700	LOOKOUT ICP/2000	
O-233 RAT6	09/21	MIKE PLANETA	2	LOOKOUT ICP/0700	LOOKOUT ICP/2000	
REAF O-693	09/23	MARK LEIS	1	LOOKOUT ICP/0700	LOOKOUT ICP/2000	
6. Control Operations/Work Assignments:						
<u>Task:</u> Hold primary line along the 320, 325, and 350 roads. <u>Purpose:</u> Hold fire spread south of the 320/325 road systems and minimize spread to the north. <u>End State:</u> Reduce impacts to HJ Andrews Experimental Station, other infrastructure, and natural resources.						
7. Special Instructions:						
Limit traffic on 1506 Rd. No traffic allowed past DP12 on the 1506 Rd. Limit traffic on the 1508 Rd. Coordinate activities with HJ Andrews Staff.  <b>Needs:</b> FELB x 2						
8. Division/Group Communication Summary						
Function	Channel	RX Frequency N/W	RX Tone/NAC	TX Frequency N/W	TX Tone/NAC	Mode
TACTICAL	SEE COM PLAN					
COMMAND	SEE COM PLAN					
9. Prepared By (Resource Unit Leader)		Approved By (Planning Section Chief)		Date	Time	
NICOLE LAGIOIA		MONICA RAMIREZ		09/19/2023	2000	



**Division/Group Assignment List (ICS 204 WF)**  
**Controlled Unclassified Information//Basic**

<b>1. Incident Name:</b>				<b>3.</b>			
BEDROCK LOOKOUT				<b>Branch:</b>		<b>Division/Group</b>	
<b>2. Operational Period: DAY / NIGHT</b>				I		L	
Date/Time From: 09/20/2023 0700 WED		Date/Time To: 09/21/2023 0700 THU					
<b>4. Operations Personnel</b>							
<b>FIELD OPS</b>		TERRY WALTER DAN TRAPANESE (T)		<b>BRANCH DIRECTOR</b>		SAM TACCHINI JOSH VERELLEN (T)	
<b>AIR ATTACK SUPERVISOR</b>		JOE TONE		<b>DIVISION/GROUP SUPERVISOR</b>		DAREK PEPPE (LWD 9/27) COLBEY RICHMOND (LWD 9/25) (T)	
<b>5. Resources Assigned this Period</b>							
Strike Team / Task Force / Resource Designator		LWD	Leader	Number Persons	Drop Off PT./Time	Pick Up PT./Time	
FMOD O-709		09/23	STEVEN HAYTER	2	HOODOO FOB/0700	HOODOO FOB/2000	
IHC C-97 ROOSEVELT IHC		09/27	LARRY MONEY	20	HOODOO FOB/0700	HOODOO FOB/2000	
HC2IA C-95 BIG STATE WILDFIRE NCC 14D		09/24	MEKIAH STANSEL	20	HOODOO FOB/0700	HOODOO FOB/2000	
ENG3 E-625 UTUWF E321		09/24	KARL DELANGE	8	HOODOO FOB/0700	HOODOO FOB/2000	
ENG4 E-631 - OR-MHF - 421		09/25	MICHAEL L WHITAKER	4	HOODOO FOB/0700	HOODOO FOB/2000	
ENG6 E-506 TRI-STATE FIRE (BDRK)		09/29	STANLEY SMITH	3	HOODOO FOB/0700	HOODOO FOB/2000	
ENG6 E-683 OR-DEF - 636		10/03	KREG JACKSON	6	HOODOO FOB/0700	HOODOO FOB/2000	
DZR2 E-26 GRIFFITH		09/25	MATT JAEGER	2	HOODOO FOB/0700	HOODOO FOB/2000	
CHP1 E-189 BRINK BROTHERS		09/25	FRENTON EDWARDS	3	HOODOO FOB/0700	HOODOO FOB/2000	
CHP1 E-555 MILLER TIMBER		09/29	TIM JONES	2	HOODOO FOB/0700	HOODOO FOB/2000	
CHP2 E-512 MARTY'S TREE SERVICE		09/21	JOSEPH ONEILL	3	HOODOO FOB/0700	HOODOO FOB/2000	
CHP2 E-620 DIAMOND ROAD MAINTENANCE		09/24	LAMAR MELTIN	3	HOODOO FOB/0700	HOODOO FOB/2000	
FORW E-343 MILLER		09/25	SCOTT KELLOGG	1	HOODOO FOB/0700	HOODOO FOB/2000	
FORW E-595 MILLER TIMBER SERVICES		09/21	SCOTT MCELHANEY	2	HOODOO FOB/0700	HOODOO FOB/2000	
WTS2 E-183 STAN HARLAN		09/30	ZANE WILSON	1	HOODOO FOB/0700	HOODOO FOB/2000	
WTS2 E-184 BEAR CREEK		09/28	JAY KRIDER	1	HOODOO FOB/0700	HOODOO FOB/2000	
WTS2 E-268 PARAGON WATER TENDERS		09/22	JOSH MICHELI	1	HOODOO FOB/0700	HOODOO FOB/2000	
WTS2 E-288 HUGHES, PATRICK		09/26	GARY HUGHES	1	HOODOO FOB/0700	HOODOO FOB/2000	
<b>8. Division/Group Communication Summary</b>							
Function	Channel	RX Frequency N/W	RX Tone/NAC	TX Frequency N/W	TX Tone/NAC	Mode	
TACTICAL	SEE COM PLAN						
COMMAND	SEE COM PLAN						
<b>9. Prepared By (Resource Unit Leader)</b>			<b>Approved By (Planning Section Chief)</b>		<b>Date</b>	<b>Time</b>	
NICOLE LAGIOIA			MONICA RAMIREZ		09/19/2023	2000	



**Division/Group Assignment List (ICS 204 WF)**  
**Controlled Unclassified Information//Basic**

1. Incident Name:			3.			
BEDROCK LOOKOUT			Branch:		Division/Group	
2. Operational Period: DAY / NIGHT			I		L	
Date/Time From: 09/20/2023 0700 WED	Date/Time To: 09/21/2023 0700 THU					
4. Operations Personnel						
FIELD OPS	TERRY WALTER DAN TRAPANESE (T)		BRANCH DIRECTOR		SAM TACCHINI JOSH VERELLEN (T)	
AIR ATTACK SUPERVISOR	JOE TONE		DIVISION/GROUP SUPERVISOR		DAREK PEPPE (LWD 9/27) COLBEY RICHMOND (LWD 9/25) (T)	
5. Resources Assigned this Period						
Strike Team / Task Force / Resource Designator	LWD	Leader	Number Persons	Drop Off PT./Time	Pick Up PT./Time	
SOF2 O-636	09/20	TODD MOTT	1	HOODOO FOB/0700	HOODOO FOB/2000	
E-3 AMBO 301	10/03	ALEXIS WASDEN	2	HOODOO FOB/0700	HOODOO FOB/2000	
O-677 MEDIC 221	09/22	JACOB SMITH	1	HOODOO FOB/0700	HOODOO FOB/2000	
O-234 H.A.R.T. (RAT 7)	09/21	RAUL RUIZ	2	HOODOO FOB/0700	HOODOO FOB/2000	
O-675 EMT 108	09/23	STEPHAN BLASKOVICS	1	HOODOO FOB/0700	HOODOO FOB/2000	
REAF O-693	09/23	MARK LEIS	1	HOODOO FOB/0700	HOODOO FOB/2000	
6. Control Operations/Work Assignments:						
<p><u>Task:</u> Assess fire spread to the north in Deer Creek drainage. Assess fire spread on Carpenter Mountain.</p> <p><u>Purpose:</u> Contain fire to the west of Deer Creek and south of identified primary lines to reduce potential for further fire growth.</p> <p><u>End State:</u> Fire is contained within identified primary lines. Impacts to natural resources and infrastructure are minimized.</p>						
7. Special Instructions:						
Contact DIVS prior to entry to reduce congestion on 1508 Rd.						
<b>Needs:</b> HEQB x 1; TFLD x 1; CHSL x 1						
8. Division/Group Communication Summary						
Function	Channel	RX Frequency N/W	RX Tone/NAC	TX Frequency N/W	TX Tone/NAC	Mode
TACTICAL	SEE COM PLAN					
COMMAND	SEE COM PLAN					
9. Prepared By (Resource Unit Leader)		Approved By (Planning Section Chief)		Date	Time	
NICOLE LAGIOIA		MONICA RAMIREZ		09/19/2023	2000	

**Division/Group Assignment List (ICS 204 WF)**  
**Controlled Unclassified Information//Basic**

1. Incident Name:			3.			
BEDROCK LOOKOUT			Branch:		Division/Group	
2. Operational Period: DAY / NIGHT			V		P	
Date/Time From: 09/20/2023 0700 WED	Date/Time To: 09/21/2023 0700 THU					
4. Operations Personnel						
FIELD OPS	TERRY WALTER DAN TRAPANESE (T)		BRANCH DIRECTOR	THOM TAYLOR BRIAN BATES (T)		
AIR ATTACK SUPERVISOR	JOE TONE		DIVISION/GROUP SUPERVISOR	MARK MUNOZ (LWD 9/21) THOMAS GOHEEN		
5. Resources Assigned this Period						
Strike Team / Task Force / Resource Designator	LWD	Leader	Number Persons	Drop Off PT./Time	Pick Up PT./Time	
HEQB O-567	09/26	BART WILSON	1	HOODOO FOB/0700	HOODOO FOB/2000	
HC2 C-88 MARLETTE PEAK CREW	09/21	ERIC ROUSSEL	22	HOODOO FOB/0700	HOODOO FOB/2000	
HC2 C-105 IRON MOUNTAIN FIREFIGHTING C-4	10/02	JOSE JUAN ZAVALA	20	HOODOO FOB/0700	HOODOO FOB/2000	
ENG4 E-615 IDPAF E411	09/23	RIAN PRICE	3	HOODOO FOB/0700	HOODOO FOB/2000	
ENG6 E-632 NCF-642	09/26	KELDON MARTIN	3	HOODOO FOB/0700	HOODOO FOB/2000	
FORW E-607 AXSUS	09/22	BILL KLEIN	2	HOODOO FOB/0700	HOODOO FOB/2000	
EXC2 E-614 FENTER LOGGING	10/02	PAUL FENTER	2	HOODOO FOB/0700	HOODOO FOB/2000	
LOGL E-62 MARK JONES	10/01	ROLAND STRUM	2	HOODOO FOB/0700	HOODOO FOB/2000	
WTS2 E-450 CHARLES E. IRELAND	09/26	CRAIG VEY	1	HOODOO FOB/0700	HOODOO FOB/2000	
SOF2 O-636	09/20	TODD MOTT	1	HOODOO FOB/0700	HOODOO FOB/2000	
E-341 AMBO 306	09/26	STEPHEN SPIGELMAN	2	HOODOO FOB/0700	HOODOO FOB/2000	
O-251 MEDIC 213	09/21	BREIANAH PURINTON	1	HOODOO FOB/0700	HOODOO FOB/2000	
O-680 EMT 120	09/23	TRAYSE RIGGLE	1	HOODOO FOB/0700	HOODOO FOB/2000	
O-232 RAT 5	09/21	JEFF FARRIS	2	HOODOO FOB/0700	HOODOO FOB/2000	
ARCH O-590	09/20	MOLLY KIRKPATRICK	1	HOODOO FOB/0700	HOODOO FOB/2000	
REAF O-693	09/23	MARK LEIS	1	HOODOO FOB/0700	HOODOO FOB/2000	
REAF O-889		ERIC GJONNES	1	HOODOO FOB/0700	HOODOO FOB/2000	
6. Control Operations/Work Assignments:						
<p><u>Task:</u> Continue patrol and mop up of primary control lines. Repair suppression damage as appropriate.</p> <p><u>Purpose:</u> Contain fire to the west of HWY 126 and south of HWY 20 to minimize fire impacts to values at risk and infrastructure.</p> <p><u>End State:</u> Fire is contained and impacts to values at risk and infrastructure along HWY 126 corridor are minimized.</p>						
7. Special Instructions:						
8. Division/Group Communication Summary						
Function	Channel	RX Frequency N/W	RX Tone/NAC	TX Frequency N/W	TX Tone/NAC	Mode
TACTICAL	SEE COM PLAN					
COMMAND	SEE COM PLAN					
9. Prepared By (Resource Unit Leader)		Approved By (Planning Section Chief)		Date	Time	
NICOLE LAGIOIA		MONICA RAMIREZ		09/19/2023	2000	



**Division/Group Assignment List (ICS 204 WF)**  
 Controlled Unclassified Information//Basic

<b>1. Incident Name:</b>				<b>3.</b>			
BEDROCK LOOKOUT				<b>Branch:</b>		<b>Division/Group</b>	
<b>2. Operational Period:</b> DAY / NIGHT				V		P	
Date/Time From: 09/20/2023 0700 WED		Date/Time To: 09/21/2023 0700 THU					
<b>4. Operations Personnel</b>							
<b>FIELD OPS</b>		TERRY WALTER DAN TRAPANESE (T)		<b>BRANCH DIRECTOR</b>		THOM TAYLOR BRIAN BATES (T)	
<b>AIR ATTACK SUPERVISOR</b>		JOE TONE		<b>DIVISION/GROUP SUPERVISOR</b>		MARK MUNOZ (LWD 9/21) THOMAS GOHEEN	
<b>7. Special Instructions:</b>							
Needs: EXC2 x 1 (with thumb)							
<b>8. Division/Group Communication Summary</b>							
Function	Channel	RX Frequency N/W	RX Tone/NAC	TX Frequency N/W	TX Tone/NAC	Mode	
TACTICAL	SEE COM PLAN						
COMMAND	SEE COM PLAN						
<b>9. Prepared By (Resource Unit Leader)</b>			<b>Approved By (Planning Section Chief)</b>			<b>Date</b>	<b>Time</b>
NICOLE LAGIOIA			MONICA RAMIREZ			09/19/2023	2000



**Division/Group Assignment List (ICS 204 WF)**  
Controlled Unclassified Information//Basic

<b>1. Incident Name:</b>				<b>3.</b>		
BEDROCK LOOKOUT				Branch:  V	Division/Group  T	
<b>2. Operational Period:</b> DAY / NIGHT						
Date/Time From: 09/20/2023 0700 WED		Date/Time To: 09/21/2023 0700 THU				
<b>4. Operations Personnel</b>						
<b>FIELD OPS</b>		TERRY WALTER DAN TRAPANESE (T)		<b>BRANCH DIRECTOR</b>		THOM TAYLOR BRIAN BATES (T)
<b>AIR ATTACK SUPERVISOR</b>		JOE TONE		<b>DIVISION/GROUP SUPERVISOR</b>		CAM CHAMBERS (LWD 9/27) KIP VAN DEWATER (LWD 9/30) (T)
<b>5. Resources Assigned this Period</b>						
Strike Team / Task Force / Resource Designator		LWD	Leader	Number Persons	Drop Off PT./Time	Pick Up PT./Time
HEQB O-728		09/25	JOSIAH FISCHER	1	HOODOO FOB/0700	HOODOO FOB/2000
HEQB (T) O-729		09/25	DALLAS BUCK	1	HOODOO FOB/0700	HOODOO FOB/2000
ENG3 E-265 ICE FIRE		09/21	TOM SCHAEFER	3	HOODOO FOB/0700	HOODOO FOB/2000
ENG4 E-256 HI COUNTRY		10/02	JOHN CONGER	3	HOODOO FOB/0700	HOODOO FOB/2000
ENG3 E-451 J3 CONTRACTING (BDRK)		10/03	RICK HODGES	3	HOODOO FOB/0700	HOODOO FOB/2000
ENG4 E-479 J3 CONTRACTING (BDRK)		10/04	CARL MATHENY	3	HOODOO FOB/0700	HOODOO FOB/2000
EXC1 E-674 ZEB'S TREE SERVICE		10/02	DANNY GOODRICH	2	HOODOO FOB/0700	HOODOO FOB/2000
FEL2 E-442 J & D LOGGING		10/01	DAN SWAN	2	HOODOO FOB/0700	HOODOO FOB/2000
FORW E-608 EERA - AXSUS		09/24	KEITH DOUGHARITY	2	HOODOO FOB/0700	HOODOO FOB/2000
LOGL E-240 NORTHWEST		09/27	BAIRD DRAGO	2	HOODOO FOB/0700	HOODOO FOB/2000
LOGT E-646 EERA - WILDKAT TRUCKING		09/27		1	HOODOO FOB/0700	HOODOO FOB/2000
SOFC O-674		09/26	GARY STRICKLAND	1	HOODOO FOB/0700	HOODOO FOB/2000
O-678 MEDIC 223		09/23	BENJAMIN SHOLL	1	HOODOO FOB/0700	HOODOO FOB/2000
REAF ARCH O-475		09/21	CAYLA KENNEDY	1	HOODOO FOB/0700	HOODOO FOB/2000
ARCH O-590		09/20	MOLLY KIRKPATRICK	1	HOODOO FOB/0700	HOODOO FOB/2000
REAF O-694		09/24	ROB TITCOMB	1	HOODOO FOB/0700	HOODOO FOB/2000
REAF O-889			ERIC GJONNES	1	HOODOO FOB/0700	HOODOO FOB/2000
<b>6. Control Operations/Work Assignments:</b>						
<b>8. Division/Group Communication Summary</b>						
Function	Channel	RX Frequency N/W	RX Tone/NAC	TX Frequency N/W	TX Tone/NAC	Mode
COMMAND	SEE COM PLAN					
TACTICAL	SEE COM PLAN					
<b>9. Prepared By (Resource Unit Leader)</b>			<b>Approved By (Planning Section Chief)</b>		<b>Date</b>	<b>Time</b>
NICOLE LAGIOIA			MONICA RAMIREZ		09/19/2023	2000

**Division/Group Assignment List (ICS 204 WF)**  
Controlled Unclassified Information//Basic

<b>1. Incident Name:</b>				<b>3.</b>			
BEDROCK LOOKOUT				<b>Branch:</b>		<b>Division/Group</b>	
<b>2. Operational Period:</b> DAY / NIGHT				V		T	
Date/Time From: 09/20/2023 0700 WED		Date/Time To: 09/21/2023 0700 THU					
<b>4. Operations Personnel</b>							
<b>FIELD OPS</b>		TERRY WALTER DAN TRAPANESE (T)		<b>BRANCH DIRECTOR</b>		THOM TAYLOR BRIAN BATES (T)	
<b>AIR ATTACK SUPERVISOR</b>		JOE TONE		<b>DIVISION/GROUP SUPERVISOR</b>		CAM CHAMBERS (LWD 9/27) KIP VAN DEWATER (LWD 9/30) (T)	
<b>6. Control Operations/Work Assignments:</b>							
<p><u>Task:</u> Patrol , monitor, and mop up any significant heat from DP78 to DP110. Backhaul unneeded equipment. Continue with log processing and hauling operations near DP77 and DP110. Chip slash and repair drainage along roads from DP78 to DP110. Repair dozerline using excavators from DP78 to DP110.</p> <p><u>Purpose:</u> Aid in the completion of repair efforts to areas distrubed by wildfire suppression. Secure southern and eastern flank of the fire.</p> <p><u>End State:</u> Stop southern and eastern progression of the Lookout Fire minimizing impacts to the HWY 126 corridor. Complete fire suppression repair activities east of DP78 and south of DP110. Follow actions outlined in the suppression repair plan.</p>							
<b>7. Special Instructions:</b>							
S-826 Top Fill is located at the DP140 campground.							
<b>Needs:</b> CHSL x 1							
<b>8. Division/Group Communication Summary</b>							
Function	Channel	RX Frequency N/W	RX Tone/NAC	TX Frequency N/W	TX Tone/NAC	Mode	
COMMAND	SEE COM PLAN						
TACTICAL	SEE COM PLAN						
<b>9. Prepared By (Resource Unit Leader)</b>			<b>Approved By (Planning Section Chief)</b>			<b>Date</b>	<b>Time</b>
NICOLE LAGIOIA			MONICA RAMIREZ			09/19/2023	2000



## Division/Group Assignment List (ICS 204 WF)

Controlled Unclassified Information//Basic

<b>1. Incident Name:</b>				<b>3.</b>		
BEDROCK LOOKOUT				<b>Branch:</b>  V	<b>Division/Group</b>  HORSE CREEK / POTHOLE	
<b>2. Operational Period:</b> DAY / NIGHT						
Date/Time From: 09/20/2023 0700 WED		Date/Time To: 09/21/2023 0700 THU				
<b>4. Operations Personnel</b>						
<b>FIELD OPS</b>		TERRY WALTER DAN TRAPANESE (T)		<b>BRANCH DIRECTOR</b>		THOM TAYLOR BRIAN BATES (T)
<b>AIR ATTACK SUPERVISOR</b>		JOE TONE		<b>DIVISION/GROUP SUPERVISOR</b>		AMY MCCLAVE (LWD 9/25) CODY ST. CLAIR (LWD 9/27) (T)
<b>5. Resources Assigned this Period</b>						
Strike Team / Task Force / Resource Designator		LWD	Leader	Number Persons	Drop Off PT./Time	Pick Up PT./Time
TFLD O-781		09/28	REBECCA FRY	1	HOODOO FOB/0700	HOODOO FOB/2000
HEQB O-723		09/26	CHRIS COLT	1	HOODOO FOB/0700	HOODOO FOB/2000
HEQB (T) O-650		09/20	JAZZ BEYUKA	1	HOODOO FOB/0700	HOODOO FOB/2000
FELB O-665		09/20	KEVIN W FOSTER	1	HOODOO FOB/0700	HOODOO FOB/2000
FMOD O-707 TIMBER TIPPER		09/23	NATE ZELLER	2	HOODOO FOB/0700	HOODOO FOB/2000
FMOD O-495 GROUND ZERO TIMBER FALLERS		09/21	DAN PIHL	2	HOODOO FOB/0700	HOODOO FOB/2000
HC2IA C-93 GRAYBACK 16B		09/20	ARIC COLEMAN	20	HOODOO FOB/0700	HOODOO FOB/2000
*ENG3 E-621 GRAND RONDE 131		09/22	JIM STEWART PINDER	10	HOODOO FOB/0700	HOODOO FOB/2000
*ENG6 E-366 AMERICAN		10/05	MATT MORRELL	3	HOODOO FOB/0700	HOODOO FOB/2000
WTS2 E-29 PARAGON (BDRK)		09/24	COLLIN ANDREWS	1	HOODOO FOB/0700	HOODOO FOB/2000
DZR2 E-266 KISER & KISER (BDRK)		09/24	CLIFF KISER	2	HOODOO FOB/0700	HOODOO FOB/2000
EXC2 E-511 EVERY LIVESTOCK		10/04	TOM GREEN	2	HOODOO FOB/0700	HOODOO FOB/2000
EXC4 E-434 AXSUS ENTERPRISES		10/02	ANGELA RICE	2	HOODOO FOB/0700	HOODOO FOB/2000
SKD2 E-274 BRINK BROTHERS		09/29	KYLE PATTERSON	1	HOODOO FOB/0700	HOODOO FOB/2000
FORW E-346 MILLER		09/30	JUSTIN ARMISTEAD	2	HOODOO FOB/0700	HOODOO FOB/2000
FEL1 E-647 DUSTIN CHANTRY		09/28	DUSTIN CHANTRY	1	HOODOO FOB/0700	HOODOO FOB/2000
FORW E-344 MILLER		10/01	EDDIE ORTIZ	2	HOODOO FOB/0700	HOODOO FOB/2000
CHP1 E-537 ANVIL BUILDERS		09/27	JILLIAN FALGE	2	HOODOO FOB/0700	HOODOO FOB/2000
LOGL E-351 MILLER		09/27	PAUL DOLLAR	2	HOODOO FOB/0700	HOODOO FOB/2000
LOGT E-508 BRINK BROTHERS (BDRK)		09/30	MARK BRINK	2	HOODOO FOB/0700	HOODOO FOB/2000
<b>8. Division/Group Communication Summary</b>						
Function	Channel	RX Frequency N/W	RX Tone/NAC	TX Frequency N/W	TX Tone/NAC	Mode
TACTICAL	SEE COM PLAN					
COMMAND	SEE COM PLAN					
<b>9. Prepared By (Resource Unit Leader)</b>			<b>Approved By (Planning Section Chief)</b>		<b>Date</b>	<b>Time</b>
NICOLE LAGIOIA			MONICA RAMIREZ		09/19/2023	2000

**Division/Group Assignment List (ICS 204 WF)**  
**Controlled Unclassified Information//Basic**

<b>1. Incident Name:</b>				<b>3.</b>		
BEDROCK LOOKOUT				<b>Branch:</b>  <b>V</b>	<b>Division/Group</b>  <b>HORSE CREEK / POTHOLE</b>	
<b>2. Operational Period:</b> DAY / NIGHT						
Date/Time From: 09/20/2023 0700 WED		Date/Time To: 09/21/2023 0700 THU				
<b>4. Operations Personnel</b>						
<b>FIELD OPS</b>		TERRY WALTER DAN TRAPANESE (T)		<b>BRANCH DIRECTOR</b>		THOM TAYLOR BRIAN BATES (T)
<b>AIR ATTACK SUPERVISOR</b>		JOE TONE		<b>DIVISION/GROUP SUPERVISOR</b>		AMY MCCLAVE (LWD 9/25) CODY ST. CLAIR (LWD 9/27) (T)
<b>5. Resources Assigned this Period</b>						
Strike Team / Task Force / Resource Designator		LWD	Leader	Number Persons	Drop Off PT./Time	Pick Up PT./Time
SOF1 O-674		09/26	GARY STRICKLAND	1	HOODOO FOB/0700	HOODOO FOB/2000
E-468 AMB2 309		10/03	KYLE SCHULTZ	2	HOODOO FOB/0700	HOODOO FOB/2000
O-54 RAT 4		09/23	RICK BOSTIAN	2	HOODOO FOB/0700	HOODOO FOB/2000
O-823 EMT 124		10/01	DANIEL HILBERG	1	HOODOO FOB/0700	HOODOO FOB/2000
LEAD READ O-37		09/23	MONTE KUK	1	HOODOO FOB/0700	HOODOO FOB/2000
REAF ARCH O-475		09/21	CAYLA KENNEDY	1	HOODOO FOB/0700	HOODOO FOB/2000
REAF O-694		09/24	ROB TITCOMB	1	HOODOO FOB/0700	HOODOO FOB/2000
<b>6. Control Operations/Work Assignments:</b>						
<u>Task:</u> Improve existing control features to secure the fire perimeter when and where it is safe to do so.						
<u>Purpose:</u> Increase containment to reduce impacts to private and public values at risk.						
<u>End State:</u> Fire is kept within current footprint and values at risk are protected.						
<b>7. Special Instructions:</b>						
*Denotes resources for Initial Attack (IA)						
<b>Needs:</b>						
<b>8. Division/Group Communication Summary</b>						
Function	Channel	RX Frequency N/W	RX Tone/NAC	TX Frequency N/W	TX Tone/NAC	Mode
TACTICAL	SEE COM PLAN					
COMMAND	SEE COM PLAN					
<b>9. Prepared By (Resource Unit Leader)</b>			<b>Approved By (Planning Section Chief)</b>		<b>Date</b>	<b>Time</b>
NICOLE LAGIOIA			MONICA RAMIREZ		09/19/2023	2000



**Division/Group Assignment List (ICS 204 WF)**  
**Controlled Unclassified Information//Basic**

<b>1. Incident Name:</b>			<b>3.</b>			
BEDROCK LOOKOUT			<b>Branch:</b>		<b>Division/Group</b>	
<b>2. Operational Period:</b> DAY / NIGHT			V		WHITE PINE	
Date/Time From: 09/20/2023 0700 WED	Date/Time To: 09/21/2023 0700 THU					
<b>4. Operations Personnel</b>						
<b>FIELD OPS</b>	TERRY WALTER DAN TRAPANESE (T)		<b>BRANCH DIRECTOR</b>	THOM TAYLOR BRIAN BATES (T)		
<b>AIR ATTACK SUPERVISOR</b>	JOE TONE		<b>DIVISION/GROUP SUPERVISOR</b>	JEFF COBURN (LWD 9/20) MATT ABELL (LWD 9/23) (T)		
<b>5. Resources Assigned this Period</b>						
Strike Team / Task Force / Resource Designator	LWD	Leader	Number Persons	Drop Off PT./Time	Pick Up PT./Time	
HEQB O-764	09/20	JEREMY JENSEN	1	HOODOO FOB/0700	HOODOO FOB/2000	
HEQB (T) O-765	09/23	TYLER GREENBERG	1	HOODOO FOB/0700	HOODOO FOB/2000	
DZR2 E-297 COUGAR RIDGE	09/26	DAVE OAKES	2	HOODOO FOB/0700	HOODOO FOB/2000	
FORW E-594 PONSSE RUBBER - MILLER TIMBER	09/27	CARSON DIXON	1	HOODOO FOB/0700	HOODOO FOB/2000	
CHP1 E-538 ALBACH	09/27	NICK MIGNRON	2	HOODOO FOB/0700	HOODOO FOB/2000	
CHP1 E-542 MOUNTAIN VIEW TREE	09/29	KAI ELROD	2	HOODOO FOB/0700	HOODOO FOB/2000	
CHP1 E-673 WYEAST FORESTRY				HOODOO FOB/0700	HOODOO FOB/2000	
FEL1 E-272 TJS	09/24	CHAD BELL	2	HOODOO FOB/0700	HOODOO FOB/2000	
FEL1 E-280 BRINK BROTHERS BEDROCK	10/02	DAKOTA WELLS	2	HOODOO FOB/0700	HOODOO FOB/2000	
WTS2 E-289 HUGHES, PATRICK	09/23	PATRICK HUGHES	1	HOODOO FOB/0700	HOODOO FOB/2000	
WTS2 E-290 BIGFOOT	09/24	TALON MITCHELL	1	HOODOO FOB/0700	HOODOO FOB/2000	
SOFC O-674	09/26	GARY STRICKLAND	1	HOODOO FOB/0700	HOODOO FOB/2000	
O-681 EMT121	09/23	LACY SINGHOSE	1	HOODOO FOB/0700	HOODOO FOB/2000	
O-789 MEDIC 229	09/28	NATHAN DAVIS	1	HOODOO FOB/0700	HOODOO FOB/2000	
REAF O-694	09/24	ROB TITCOMB	1	HOODOO FOB/0700	HOODOO FOB/2000	
<b>6. Control Operations/Work Assignments:</b>						
<u>Task:</u> Prepare indirect contingency line along the 2649, 265, and 2657 roads. <u>Purpose:</u> To establish contingency line on the east side of the Lookout Fire. <u>End State:</u> Contingency line is completed.						
<b>7. Special Instructions:</b>						
Needs: HC2 x 1						
<b>8. Division/Group Communication Summary</b>						
Function	Channel	RX Frequency N/W	RX Tone/NAC	TX Frequency N/W	TX Tone/NAC	Mode
TACTICAL	SEE COM PLAN					
COMMAND	SEE COM PLAN					
<b>9. Prepared By (Resource Unit Leader)</b>		<b>Approved By (Planning Section Chief)</b>		<b>Date</b>	<b>Time</b>	
NICOLE LAGIOIA		MONICA RAMIREZ		09/19/2023	2000	

**Division/Group Assignment List (ICS 204 WF)**  
**Controlled Unclassified Information//Basic**

<b>1. Incident Name:</b>			<b>3.</b>			
BEDROCK LOOKOUT			<b>Branch:</b>		<b>Division/Group</b>	
<b>2. Operational Period:</b> DAY / NIGHT			PETE'S LAKE			
Date/Time From: 09/20/2023 0700 WED	Date/Time To: 09/21/2023 0700 THU					
<b>4. Operations Personnel</b>						
<b>FIELD OPS</b> REGGIE BRAY		<b>BRANCH DIRECTOR</b>				
<b>AIR ATTACK SUPERVISOR</b> JOE TONE		<b>DIVISION/GROUP SUPERVISOR</b>		JAMES HONANIE CHRIS BURFORD (T)		
<b>5. Resources Assigned this Period</b>						
Strike Team / Task Force / Resource Designator	LWD	Leader	Number Persons	Drop Off PT./Time	Pick Up PT./Time	
TFLD O-3093	09/21	FRANK GOODSON	1	WANOGA SPIKE/0700	WANOGA SPIKE/2000	
TFLD (T) O-3094	09/22	JUSTIN DAVIES	1	WANOGA SPIKE/0700	WANOGA SPIKE/2000	
TFLD (T) O-3110	10/02	DANIEL SMITH	1	WANOGA SPIKE/0700	WANOGA SPIKE/2000	
HEQB O-3105	09/28	TODD BOWERS	1	WANOGA SPIKE/0700	WANOGA SPIKE/2000	
IHC C-94 LA GRANDE IHC	09/21	CHUY ELGUEZABAL	24	WANOGA SPIKE/0700	WANOGA SPIKE/2000	
IHC C-96 CRW1 - LOGAN IHC	09/28	ERIC LANDRETH	22	WANOGA SPIKE/0700	WANOGA SPIKE/2000	
WTT2 E-3104 TUB SPRINGS	09/21	LARRY MCNAMEE	1	WANOGA SPIKE/0700	WANOGA SPIKE/2000	
MBM2 E-3012 JUSTIN PITTS	09/21	RON LEVANG	2	WANOGA SPIKE/0700	WANOGA SPIKE/2000	
MBM2 E-3013 J3 CONTRACTING	09/21	DAN LANE	2	WANOGA SPIKE/0700	WANOGA SPIKE/2000	
*DOZ2 L/L 230 (PETE)		DAN LERMAN	1	WANOGA SPIKE/0700	WANOGA SPIKE/2000	
*DOZ2 L/L 231 (PETE)		DAN HAUSWOLD	1	WANOGA SPIKE/0700	WANOGA SPIKE/2000	
ENG6 E3110 PATRICK	10/01	PAUL RAMPININI	3	WANOGA SPIKE/0700	WANOGA SPIKE/2000	
ENG6 E-3111 PATRICK	10/01	ONASIS ADAME	3	WANOGA SPIKE/0700	WANOGA SPIKE/2000	
ENG6 E-3112 PATRICK	10/01	DICK SYPHERS	3	WANOGA SPIKE/0700	WANOGA SPIKE/2000	
ENG6 E-3113 WOODPECKER	10/01	ALEX WOLFF	3	WANOGA SPIKE/0700	WANOGA SPIKE/2000	
ENG6 E-3114 STEELHEAD ENTERPRISES	10/01	JOHN TALOR	3	WANOGA SPIKE/0700	WANOGA SPIKE/2000	
ENG6 E-3115 TERENCE TITUS	09/25	THOMAS HAMILTON	3	WANOGA SPIKE/0700	WANOGA SPIKE/2000	
<b>8. Division/Group Communication Summary</b>						
Function	Channel	RX Frequency N/W	RX Tone/NAC	TX Frequency N/W	TX Tone/NAC	Mode
TACTICAL	SEE COMM PLAN					
COMMAND	SEE COMM PLAN					
<b>9. Prepared By (Resource Unit Leader)</b>		<b>Approved By (Planning Section Chief)</b>		<b>Date</b>	<b>Time</b>	
NICOLE LAGIOIA		MONICA RAMIREZ		09/19/2023	2000	



**Division/Group Assignment List (ICS 204 WF)**  
Controlled Unclassified Information//Basic

1. Incident Name:			3.			
BEDROCK LOOKOUT			Branch:		Division/Group	
2. Operational Period: DAY / NIGHT					PETE'S LAKE	
Date/Time From: 09/20/2023 0700 WED		Date/Time To: 09/21/2023 0700 THU				
4. Operations Personnel						
FIELD OPS		REGGIE BRAY		BRANCH DIRECTOR		
AIR ATTACK SUPERVISOR		JOE TONE		DIVISION/GROUP SUPERVISOR		JAMES HONANIE CHRIS BURFORD (T)
5. Resources Assigned this Period						
Strike Team / Task Force / Resource Designator		LWD	Leader	Number Persons	Drop Off PT./Time	Pick Up PT./Time
SOF2 O-826		10/02	QUINCY CHUNG	1	WANOGA SPIKE/0700	WANOGA SPIKE/2000
E-76 AMBO 311		09/21	SAM NAKANISHI	2	WANOGA SPIKE/0700	WANOGA SPIKE/2000
O-55 REMS1		09/28	SAGE STEWART	4	WANOGA SPIKE/0700	WANOGA SPIKE/2000
6. Control Operations/Work Assignments:						
<p>Task: Continue preparation of shaded fuel break along Cascade Lakes Highway. Implement pump/hose/sprinkler systems in accordance with the Pete's Lake Structure Protection Plan.</p> <p>Purpose: To prevent the spread of fire east of the highway and to protect values at risk including infrastructure, scenic corridor, resorts, and recreation property.</p> <p>End State: A secure holding feature that provides scenic value and fire resilience to the entities along the Cascade Lakes Highway.</p>						
7. Special Instructions:						
*Available for IA response.						
<b>Needs:</b> CHP2 x 2						
8. Division/Group Communication Summary						
Function	Channel	RX Frequency N/W	RX Tone/NAC	TX Frequency N/W	TX Tone/NAC	Mode
TACTICAL	SEE COMM PLAN					
COMMAND	SEE COMM PLAN					
9. Prepared By (Resource Unit Leader)			Approved By (Planning Section Chief)		Date	Time
NICOLE LAGIOIA			MONICA RAMIREZ		09/19/2023	2000

**Division/Group Assignment List (ICS 204 WF)**  
**Controlled Unclassified Information//Basic**

<b>1. Incident Name:</b>				<b>3.</b>		
BEDROCK LOOKOUT				<b>Branch:</b>		<b>Division/Group</b>
<b>2. Operational Period:</b> DAY / NIGHT				LOOKOUT STAGING		
Date/Time From: 09/20/2023 0700 WED		Date/Time To: 09/21/2023 0700 THU				
<b>4. Operations Personnel</b>						
<b>FIELD OPS</b>		TERRY WALTER DAN TRAPANESE (T)		<b>BRANCH DIRECTOR</b>		
<b>AIR ATTACK SUPERVISOR</b>		JOE TONE		<b>STAGING AREA MANAGER</b>		TODD GRIFFIN
<b>5. Resources Assigned this Period</b>						
Strike Team / Task Force / Resource Designator		LWD	Leader	Number Persons	Drop Off PT./Time	Pick Up PT./Time
SKD1 E-672 T2, INC. - 684813		10/02	JAKE WILLE	2	LOOKOUT ICP/0700	LOOKOUT ICP/2000
SKD2 E-232 ROBERT S MURRAY (BDRK)		10/01	ANNA TITUS	2	LOOKOUT ICP/0700	LOOKOUT ICP/2000
MBM1 E-94 ENGLE		09/21	DWIGHT JOHNSON	2	LOOKOUT ICP/0700	LOOKOUT ICP/2000
MBM1 E-225 STATEWIDE		09/29	CEDRIC HAYDEN	2	LOOKOUT ICP/0700	LOOKOUT ICP/2000
MBM1 E-227 STATEWIDE		09/25	NICK JUAREZ	2	LOOKOUT ICP/0700	LOOKOUT ICP/2000
MBM1 E-229 MARK JONES		09/26	BILL DELANEY	4	LOOKOUT ICP/0700	LOOKOUT ICP/2000
MBM2 E-454 J & D (BDRK)		09/20	EDWARD DAVIS	2	LOOKOUT ICP/0700	LOOKOUT ICP/2000
MBM2 E-494 PORTABLE ROCK PRODUCTION (BDRK)		09/29	DANIEL BESSETT	2	LOOKOUT ICP/0700	LOOKOUT ICP/2000
FEL1 E-63 MARK JONES		09/29	ETHAN WILDLING	2	LOOKOUT ICP/0700	LOOKOUT ICP/2000
FEL1 E-100 BOULDER RIDGE		09/23		2	LOOKOUT ICP/0700	LOOKOUT ICP/2000
FEL1 E-235 MKS		09/24	JD WELLS	3	LOOKOUT ICP/0700	LOOKOUT ICP/2000
FEL1 E-238 TJ'S MECHANICAL CUTTING		09/29	AUSTIN SEEKERS	2	LOOKOUT ICP/0700	LOOKOUT ICP/2000
FEL1 E-271 S5 LAND SERVICES		09/27	JOSH BARCUS	2	LOOKOUT ICP/0700	LOOKOUT ICP/2000
FEL1 E-273 GUMPERT		09/25	CLINT GUMPERT	2	LOOKOUT ICP/0700	LOOKOUT ICP/2000
FEL1 E-612 EERA - AXSUS ENTERPRISE -		09/25	JACK MAREK	2	LOOKOUT ICP/0700	LOOKOUT ICP/2000
FEL1 E-649 EERA - DEAN INNOVATIONS		09/30	DAN FUCHS	1	LOOKOUT ICP/0700	LOOKOUT ICP/2000
FEL2 E-331 MARK JONES		09/24		2	LOOKOUT ICP/0700	LOOKOUT ICP/2000
LOGP E-507 AXSUS ENTERPRISES (BDRK)		09/24	WADE RAINBOLT	2	LOOKOUT ICP/0700	LOOKOUT ICP/2000
LOGL E-675 EERA - BRINK BROTHERS INC		10/02	JASON LARSON	2	LOOKOUT ICP/0700	LOOKOUT ICP/2000
LOGT E-509 MARK JONES TRUCKING (BDRK)		09/22	TREVOR TRIMBLE	1	LOOKOUT ICP/0700	LOOKOUT ICP/2000
LOGT E-527 MARK JONES TRUCKING 2		09/30	TERRY LEWIS	1	LOOKOUT ICP/0700	LOOKOUT ICP/2000
<b>6. Control Operations/Work Assignments:</b>						
<b>8. Division/Group Communication Summary</b>						
Function	Channel	RX Frequency N/W	RX Tone/NAC	TX Frequency N/W	TX Tone/NAC	Mode
TACTICAL	SEE COM PLAN					
COMMAND	SEE COM PLAN					
<b>9. Prepared By (Resource Unit Leader)</b>			<b>Approved By (Planning Section Chief)</b>		<b>Date</b>	<b>Time</b>
NICOLE LAGIOIA			MONICA RAMIREZ		09/19/2023	2000



**Division/Group Assignment List (ICS 204 WF)**  
 Controlled Unclassified Information//Basic

<b>1. Incident Name:</b>				<b>3.</b>			
BEDROCK LOOKOUT				<b>Branch:</b>		<b>Division/Group</b>	
<b>2. Operational Period:</b> DAY / NIGHT				<b>LOOKOUT STAGING</b>			
Date/Time From: 09/20/2023 0700 WED		Date/Time To: 09/21/2023 0700 THU					
<b>4. Operations Personnel</b>							
<b>FIELD OPS</b>		TERRY WALTER DAN TRAPANESE (T)		<b>BRANCH DIRECTOR</b>			
<b>AIR ATTACK SUPERVISOR</b>		JOE TONE		<b>STAGING AREA MANAGER</b>		TODD GRIFFIN	
<b>6. Control Operations/Work Assignments:</b>							
Achieve efficiency with heavy equipment at Lookout Staging. Determine needs and right size for Lookout Staging area with equipment needed to achieve the best outcome for fire control objectives. Prepare Strube Flats for Willamette National Forest log decking.							
<b>7. Special Instructions:</b>							
Resources report to Lookout Staging 0800 each day. Staging resources need to monitor Command Channel.							
<b>8. Division/Group Communication Summary</b>							
Function	Channel	RX Frequency N/W	RX Tone/NAC	TX Frequency N/W	TX Tone/NAC	Mode	
TACTICAL	SEE COM PLAN						
COMMAND	SEE COM PLAN						
<b>9. Prepared By (Resource Unit Leader)</b>			<b>Approved By (Planning Section Chief)</b>			<b>Date</b>	<b>Time</b>
NICOLE LAGIOIA			MONICA RAMIREZ			09/19/2023	2000

**Division/Group Assignment List (ICS 204 WF)**  
**Controlled Unclassified Information//Basic**

<b>1. Incident Name:</b>				<b>3.</b>		
BEDROCK LOOKOUT				<b>Branch:</b>		<b>Division/Group</b>
<b>2. Operational Period:</b> DAY / NIGHT				NIGHT		
Date/Time From: 09/20/2023 0700 WED		Date/Time To: 09/21/2023 0700 THU				
<b>4. Operations Personnel</b>						
<b>FIELD OPS</b>		TERRY WALTER DAN TRAPANESE (T)		<b>BRANCH DIRECTOR</b>		
				<b>DIVISION/GROUP SUPERVISOR</b>		THAD NIEBEL (LWD 9/27) GARY CROMBIE (LWD 9/26) (T)
<b>5. Resources Assigned this Period</b>						
<b>Strike Team / Task Force / Resource Designator</b>		<b>LWD</b>	<b>Leader</b>	<b>Number Persons</b>	<b>Drop Off PT./Time</b>	<b>Pick Up PT./Time</b>
TFLD O-576		09/20	RENE VELAZQUEZ	1	HOODOO FOB/1900	LOOKOUT ICP/2300
TFLD (T) O-698		09/23	JACOB OSSOWSKI	1	HOODOO FOB/1900	LOOKOUT ICP/2300
ENG3 E-164 J3 CONTRACTING (BDRK)		10/05	CHRIS ESCUDERO	3	HOODOO FOB/1900	LOOKOUT ICP/2300
ENG3 E-300 HEK JONES		09/26	GEARLD COATS	3	HOODOO FOB/1900	LOOKOUT ICP/2300
ENG6 E-661 FIRST STRIKE		10/01	JOSHUA MIKACEVICH	3	HOODOO FOB/1900	LOOKOUT ICP/2300
ENG6 E-663 FIRST STRIKE		10/01	GERALD COATS	3	HOODOO FOB/1900	LOOKOUT ICP/2300
LOGL E-21 J & D		09/21	LJ SANOWSKI	2	HOODOO FOB/1900	LOOKOUT ICP/2300
LOGL E-22 J & D		10/03	SAWYER LOGAN	2	HOODOO FOB/1900	LOOKOUT ICP/2300
LOGL E-61 MARK JONES		09/27	MARK HELLENTHAL	2	HOODOO FOB/1900	LOOKOUT ICP/2300
LOGL E-241 NORTHWEST		09/23	LEO MILLER	2	HOODOO FOB/1900	LOOKOUT ICP/2300
LOGL E-352 BRINKS		09/21	CRAIG BRINK	2	HOODOO FOB/1900	LOOKOUT ICP/2300
LOGL E-353 BRINK		09/25	JASON LARSON	2	HOODOO FOB/1900	LOOKOUT ICP/2300
LOGL E-354 BRINK		10/02	ROBERT KRUMP	2	HOODOO FOB/1900	LOOKOUT ICP/2300
LOGL E-513 BRINK BROTHERS (BDRK)		09/23	BRIAN WHITE	2	HOODOO FOB/1900	LOOKOUT ICP/2300
LOGT E-355 MILLER		09/30	JACOB WEELEREYER	1	HOODOO FOB/1900	LOOKOUT ICP/2300
LOGT E-356 MILLER		09/27	CARI DICHTER	1	HOODOO FOB/1900	LOOKOUT ICP/2300
LOGT E-358 BRINK BROTHERS		09/20	WILLY DYSERT	1	HOODOO FOB/1900	LOOKOUT ICP/2300
LOGT E-472 MARK JONES		09/28	TOM DEEDON	1	HOODOO FOB/1900	LOOKOUT ICP/2300
LOGT E-522 MARK JONES TRUCKING		09/30	GREG ALFRIEDO	1	HOODOO FOB/1900	LOOKOUT ICP/2300
LOGT E-523 MARK JONES TRUCKING (BDRK)		09/30	MICAH JACKSON	1	HOODOO FOB/1900	LOOKOUT ICP/2300
LOGT E-610 OMALLEY BROTHERS		09/23	NICK PEREZ	1	HOODOO FOB/1900	LOOKOUT ICP/2300
LOGT E-616 EERA - DEAN INNOVATIONS		09/23	BRETT LEE	1	HOODOO FOB/1900	LOOKOUT ICP/2300
<b>8. Division/Group Communication Summary</b>						
<b>Function</b>	<b>Channel</b>	<b>RX Frequency N/W</b>	<b>RX Tone/NAC</b>	<b>TX Frequency N/W</b>	<b>TX Tone/NAC</b>	<b>Mode</b>
TACTICAL	SEE COM PLAN					
COMMAND	SEE COM PLAN					
<b>9. Prepared By (Resource Unit Leader)</b>			<b>Approved By (Planning Section Chief)</b>		<b>Date</b>	<b>Time</b>
NICOLE LAGIOIA			MONICA RAMIREZ		09/19/2023	2000



**Division/Group Assignment List (ICS 204 WF)**  
Controlled Unclassified Information//Basic

1. Incident Name:			3.			
BEDROCK LOOKOUT			Branch:		Division/Group	
2. Operational Period: DAY / NIGHT			NIGHT			
Date/Time From: 09/20/2023 0700 WED	Date/Time To: 09/21/2023 0700 THU					
4. Operations Personnel						
FIELD OPS		TERRY WALTER DAN TRAPANESE (T)		BRANCH DIRECTOR		
		DIVISION/GROUP SUPERVISOR		THAD NIEBEL (LWD 9/27) GARY CROMBIE (LWD 9/26) (T)		
5. Resources Assigned this Period						
Strike Team / Task Force / Resource Designator	LWD	Leader	Number Persons	Drop Off PT./Time	Pick Up PT./Time	
LOGT E-617 EERA - DEAN INNOVATIONS	09/24	STEPHEN ROGERS	1	HOODOO FOB/1900	LOOKOUT ICP/2300	
LOGT E-618 EERA - DEAN INNOVATIONS	09/24	JUSTIN LUCHT	1	HOODOO FOB/1900	LOOKOUT ICP/2300	
LOGT E-619 DEAN INNOVATIONS	09/23	DAVID LUCHT	1	HOODOO FOB/1900	LOOKOUT ICP/2300	
LOGT E-676 EERA - MARK JONES	10/01	JIMMY HALL	1	HOODOO FOB/1900	LOOKOUT ICP/2300	
LOGT E-677 EERA - MARK JONES	10/01	ED TURNER	1	HOODOO FOB/1900	LOOKOUT ICP/2300	
LOGT E-678 EERA - MILLER TIMBER SERVICES	10/01	EARL RAINEY	1	HOODOO FOB/1900	LOOKOUT ICP/2300	
SOF2 O-588	09/26	DAVID HADE	1	HOODOO FOB/1900	LOOKOUT ICP/2300	
E-173 AMBO 304	09/27	RUSSELL LONG- THOMPSON	2	HOODOO FOB/1900	LOOKOUT ICP/2300	
O-679 MEDIC 224	09/23	ALEX PIZZONIA	1	HOODOO FOB/1900	LOOKOUT ICP/2300	
O-682 EMT 122	09/23	ETHAN JARRETT	1	HOODOO FOB/1900	LOOKOUT ICP/2300	
O-763 EMT 123	09/27	IAN ROY	1	HOODOO FOB/1900	LOOKOUT ICP/2300	
O-734 MEDIC 227	09/27	JES TEWS	1	HOODOO FOB/1900	LOOKOUT ICP/2300	
6. Control Operations/Work Assignments:						
<u>Task</u> : Continue to patrol and monitor Divisions A/C, H, L, and P. Prep lines for rehab by removing debris. <u>Purpose</u> : Safely mop up areas of heat to maintain containment. Begin repair process. <u>End State</u> : Maintain fire within established containment lines.						
7. Special Instructions:						
Needs:						
8. Division/Group Communication Summary						
Function	Channel	RX Frequency N/W	RX Tone/NAC	TX Frequency N/W	TX Tone/NAC	Mode
TACTICAL	SEE COM PLAN					
COMMAND	SEE COM PLAN					
9. Prepared By (Resource Unit Leader)		Approved By (Planning Section Chief)		Date	Time	
NICOLE LAGIOIA		MONICA RAMIREZ		09/19/2023	2000	

**Division/Group Assignment List (ICS 204 WF)**  
Controlled Unclassified Information//Basic

<b>1. Incident Name:</b>				<b>3.</b>		
BEDROCK LOOKOUT				<b>Branch:</b>	<b>Division/Group</b>	
<b>2. Operational Period:</b> DAY / NIGHT						
Date/Time From: 09/20/2023 0700 WED		Date/Time To: 09/21/2023 0700 THU		ROADS BEDROCK NORTH		
<b>4. Operations Personnel</b>						
<b>FIELD OPS</b>	TERRY WALTER DAN TRAPANESE (T)		<b>BRANCH DIRECTOR</b>			
<b>AIR ATTACK SUPERVISOR</b>	JOE TONE		<b>GROUP SUPERVISOR</b>		DUANE CHATHAM	
<b>5. Resources Assigned this Period</b>						
<b>Strike Team / Task Force / Resource Designator</b>	<b>LWD</b>	<b>Leader</b>	<b>Number Persons</b>	<b>Drop Off PT./Time</b>	<b>Pick Up PT./Time</b>	
GRD2 E-503 PORTABLE ROCK	09/23	JIMMY POWELL	2	LOOKOUT ICP/0700	LOOKOUT ICP/2000	
VROL E-471 DEAN INNOVATIONS	10/01	KELLY	1	LOOKOUT ICP/0700	LOOKOUT ICP/2000	
WTS2 E-129 WARREN KIRK PARTRIDGE (BDRK)	09/28	KIM	1	LOOKOUT ICP/0700	LOOKOUT ICP/2000	
WTS2 E-373 SIREN	09/21	ZACH	1	LOOKOUT ICP/0700	LOOKOUT ICP/2000	
<b>6. Control Operations/Work Assignments:</b>						
Working on road 1817						
<b>7. Special Instructions:</b>						
This work is to insure safe travel for personnel and to protect the road's integrity.						
Resources should utilize the Comm Plan for area working.						
<b>8. Division/Group Communication Summary</b>						
<b>Function</b>	<b>Channel</b>	<b>RX Frequency N/W</b>	<b>RX Tone/NAC</b>	<b>TX Frequency N/W</b>	<b>TX Tone/NAC</b>	<b>Mode</b>
TACTICAL	SEE COMM PLAN					
COMMAND	SEE COMM PLAN					
<b>9. Prepared By (Resource Unit Leader)</b>		<b>Approved By (Planning Section Chief)</b>		<b>Date</b>	<b>Time</b>	
NICOLE LAGIOIA		MONICA RAMIREZ		09/19/2023	2000	



**Division/Group Assignment List (ICS 204 WF)**  
**Controlled Unclassified Information//Basic**

<b>1. Incident Name:</b>				<b>3.</b>		
BEDROCK LOOKOUT				<b>Branch:</b>	<b>Division/Group</b>	
<b>2. Operational Period: DAY / NIGHT</b>						
Date/Time From: 09/20/2023 0700 WED		Date/Time To: 09/21/2023 0700 THU		ROADS BEDROCK SOUTH		
<b>4. Operations Personnel</b>						
<b>FIELD OPS</b>	TERRY WALTER DAN TRAPANESE (T)			<b>BRANCH DIRECTOR</b>		
<b>AIR ATTACK SUPERVISOR</b>	JOE TONE			<b>GROUP SUPERVISOR</b> DUANE CHATHAM		
<b>5. Resources Assigned this Period</b>						
<b>Strike Team / Task Force / Resource Designator</b>	<b>LWD</b>	<b>Leader</b>	<b>Number Persons</b>	<b>Drop Off PT./Time</b>	<b>Pick Up PT./Time</b>	
GRD1 E-484 TABLE MOUNTAIN FORESTRY	10/03	JUSTIN CODY	1	LOOKOUT ICP/0700	LOOKOUT ICP/2000	
VROL E-524 EERA - BFC LIMITED7 (BDRK)	10/03	KELLEY THORNE	1	LOOKOUT ICP/0700	LOOKOUT ICP/2000	
WTS2 E-472 OUTLAW WILDLAND SRV (BDRK)	10/03	THOMAS SMALL	1	LOOKOUT ICP/0700	LOOKOUT ICP/2000	
WTS2 E-473 LEE ROY BELLOIR & SONS (BDRK)	10/03	RANDY BELLIOR	1	LOOKOUT ICP/0700	LOOKOUT ICP/2000	
DUMP E-496 RUSSELLS MANAGEMENT (BDRK)	09/26	AUSTIN WILEY	1	LOOKOUT ICP/0700	LOOKOUT ICP/2000	
DUMP E-497 RUSSELLS MANAGEMENT (BDRK)	09/26	KEEGAN CUNNINGHAM	1	LOOKOUT ICP/0700	LOOKOUT ICP/2000	
BHOE E-498 AXSUS ENTERPRISES -	09/21	PETER MCANERIN	2	LOOKOUT ICP/0700	LOOKOUT ICP/2000	
BHOE E-499 AXSUS ENTERPRISES	09/24	DAN GARLAND	2	LOOKOUT ICP/0700	LOOKOUT ICP/2000	
<b>6. Control Operations/Work Assignments:</b>						
R&R Sept. 18 & 19.						
<b>7. Special Instructions:</b>						
This work is to insure safe travel and to protect the integrity of the roadway.						
Resources should utilize the Comm Plan for area working.						
<b>8. Division/Group Communication Summary</b>						
<b>Function</b>	<b>Channel</b>	<b>RX Frequency N/W</b>	<b>RX Tone/NAC</b>	<b>TX Frequency N/W</b>	<b>TX Tone/NAC</b>	<b>Mode</b>
TACTICAL	SEE COMM PLAN					
COMMAND	SEE COMM PLAN					
<b>9. Prepared By (Resource Unit Leader)</b>			<b>Approved By (Planning Section Chief)</b>		<b>Date</b>	<b>Time</b>
NICOLE LAGIOIA			MONICA RAMIREZ		09/19/2023	2000

**Division/Group Assignment List (ICS 204 WF)**  
 Controlled Unclassified Information//Basic

<b>1. Incident Name:</b>				<b>3.</b>		
BEDROCK LOOKOUT				Branch:	Division/Group	
<b>2. Operational Period: DAY / NIGHT</b>						
Date/Time From: 09/20/2023 0700 WED		Date/Time To: 09/21/2023 0700 THU		ROADS LOOKOUT		
<b>4. Operations Personnel</b>						
FIELD OPS		TERRY WALTER DAN TRAPANESE (T)		BRANCH DIRECTOR		
AIR ATTACK SUPERVISOR		JOE TONE		GROUP SUPERVISOR		DUANE CHATHAM
<b>5. Resources Assigned this Period</b>						
Strike Team / Task Force / Resource Designator		LWD	Leader	Number Persons	Drop Off PT./Time	Pick Up PT./Time
GRD1 E-391 GRANITE		09/26	GRANT BEMIS	2	LOOKOUT ICP/0700	LOOKOUT ICP/2000
WTS2 E-427 BLISS FD 93403		09/23	TAYLOR PTERSON	1	LOOKOUT ICP/0700	LOOKOUT ICP/2000
GWT1 E-460 EERA - WICKIZER ENTERPRISES			**SEE CHECKIN**		LOOKOUT ICP/0700	LOOKOUT ICP/2000
WTS2 E-513 RUNDELL		09/27	SAM TILFORD	1	LOOKOUT ICP/0700	LOOKOUT ICP/2000
WTS2 E-522 T DICKSON TRUCKING		09/23	TROY DICKSON	1	LOOKOUT ICP/0700	LOOKOUT ICP/2000
<b>6. Control Operations/Work Assignments:</b>						
Working on Roads 15 & 1506						
<b>7. Special Instructions:</b>						
Resources should utilize the Comm Plan for area working.						
<b>8. Division/Group Communication Summary</b>						
Function	Channel	RX Frequency N/W	RX Tone/NAC	TX Frequency N/W	TX Tone/NAC	Mode
COMMAND	SEE COMM PLAN					
TACTICAL	SEE COMM PLAN					
<b>9. Prepared By (Resource Unit Leader)</b>			<b>Approved By (Planning Section Chief)</b>		<b>Date</b>	<b>Time</b>
NICOLE LAGIOIA			MONICA RAMIREZ		09/19/2023	2000



**AIR OPERATIONS SUMMARY ICS-220**

Incident Name / Number	Sunrise	Pumpkin	Sunset	Time Prepared	Date Prepared	Prepared By
Lookout/Bedrock	0657	1943	1913	1700 Shutdown 1930	9/19/23 Operational Period - Date 09/20/23	<i>Kyle Stump</i> Operational Period - Time 0700-2200

**General Remarks, Safety Notes, Hazards, Air Operations Special Equipment, etc.**

- \* Be aware of retardant avoidance areas, 300ft away from waterways and bodies of water.
- \* Sanitize Buckets before changing water sources.
- \* All GPS is to be collected in DD° MM.MMM'
- \* Be cognizant of all overhead and environmental hazards while working with Aircraft.
- \* Clear drop area/line before initiating drop sequence.
- \* Avoid power lines near Trail Bridge Dip site.
- \* Order All Aircraft through ATGS or Lookout Helibase
- \* Santiam Junction Airport (8S3J) is closed.

Lookout costs to: [lookout:helibase@gmail.com](mailto:lookout:helibase@gmail.com) / Santiam costs to: [santiam:helibase2023@gmail.com](mailto:santiam:helibase2023@gmail.com)

**Incident Frequencies**

Lookout A/A (TFR)	RX	Tone	TX	Tone	AM/FM	Position	Name	Phone	EQUIPMENT/SUPPLIES
A/A Rotor	120.0750				AM	AOBD	Cory Dolberry	509-668-2801	Sun River HLB trailer E-176
A/A Briefing/Handoff	135.2000				AM	AOBD-T	Kyle Stump	208-816-3141	Santiam Helibase trailer E-41
ATGS primary	167.0625		167.0625		FM	HEBM	(Sun River) Greg Scully	907-240-4660	Santiam Hotly E-80
ATGS secondary	169.2000		169.2000		FM	HEBM	(Santiam) Ben Crittenden	916-809-0410	Santiam Handwash E-133
ATGS Tactical Firing	171.1125		171.1125		FM	ATGS	Joe Tone	360-518-6266	Santiam Water Tenders E-316, E-449
DECK Sun River	168.3500		168.3500		FM				Santiam Water Tenders E-67, E-450
TOLC Sun River	164.8625		164.8625		FM				
DECK Santiam	163.1000		163.1000		FM				
TOLC Santiam	168.3375		168.3375		FM				
Pete's Lake A/A (TFR)	134.8500		134.8500		AM				Helowell E-236
IA A/G White ODF	151.3100	156.7	151.3100	156.7	FM	UASP(lead)	Joe Don Morton	907-388-1050	
IA A/G 50 USFS	168.2875		168.2875		FM				
AIR GUARD	168.6250		168.6250	110.9	FM	UAO	Nick White	541-520-5968	

**HELICOPTERS Sun River Helibase**

FAA #	TYPE	Make/Model	Helibase	Start	Avail	Remarks	FAA #	TYPE	Make/Model	Helibase	Start	Avail	Remarks
N38HX	3	AS350B3E	Sun River	0700	0800	Short-haul - GACC Prepo	N170CB	1	Kmax	Santiam	0700	0800	Bucket
N944H	3	Bell 407	Sun River	0700	0800	Bucket	N368EV	1	AS332L1	Santiam	0700	0800	Bucket
N99WL	2	Bell 205++	Sun River	700	800	Rappel, Bucket	N27HX	3	Bell 407	Santiam	0700	0800	Recon, Bucket
N767NA	1	Kmax	Sun River	0700	0800	Bucket							

**UAS**

Call Sign	Type	Make/Model	Base	Start	Avail	Remarks	FAA #	Call Sign	Make/Model	Base	Start	Avail	Remarks
UR 35			BR1			IR, Firing	N844CH	Lookout A/A	AC 690B	RDM	0800	0900	Redmond Airport

**FIXED WING AA/HLCO**

FAA #	TYPE	Make/Model	Helibase	Start	Avail	Remarks
N844CH	1	AC 690B	Santiam	0800	0900	Redmond Airport

**INCIDENT RADIO COMMUNICATIONS PLAN (ICS 205)**

Incident Name

**Lookout**

Date/Time Prepared

Operational Period Date/Time

9/19/2023 1900

09/20/2023 - All Shifts

Zn Ch	Function	Channel Name/Trunked Radio System Talkgroup	Assignment	RX Freq	N or W	RX Tone/NAC	TX Freq	N or W	TX Tone/NAC	Dev	Pwr	Mode	Remarks
1	COMMAND	CMD 1	ALL BRANCHES	169.5375		156.7	164.7125		156.7	N	H	A	Located East of Fire Area
2	COMMAND	CMD 2	ALL BRANCHES	168.4750		156.7	165.4000		156.7	N	H	A	Located NW of Fire Area
3	COMMAND	CMD 3	ALL BRANCHES	170.2875		156.7	163.6125		156.7	N	H	A	Located on Mt. Bachelor
4	COMMAND	CMD 4	ALL BRANCHES	171.0625		156.7	163.8250		156.7	N	H	A	Covers ICP + Hwy 126
5	COMMAND	CMD 5	ALL BRANCHES	170.6875		156.7	166.5750		156.7	N	H	A	Hoodoo Butte
6	TACTICAL	TAC 1	DIV A / C	168.0500		156.7	168.0500		156.7	N	H	A	Division Alpha & Division Charley
7	TACTICAL	TAC 2	Pothole/Horse Cr	168.2000		156.7	168.2000		156.7	N	H	A	Pothole / Horse Creek
8	TACTICAL	TAC 3	DIV H / White Pine	168.6000		156.7	168.6000		156.7	N	H	A	Division Hotel / White Pine
9	TACTICAL	TAC 4	DIV L/Pete's Lake	168.2500		156.7	168.2500		156.7	N	H	A	Division Lima / Pete's Lake
10	TACTICAL	TAC 5	DIV P	166.7250		156.7	166.7250		156.7	N	H	A	Division Papa
11	TACTICAL	TAC 6	DIV T / Nights	166.7750		156.7	166.7750		156.7	N	H	A	Division Tango / Nights
12	Forest Rptr.	Frissell	ALL DIVS	172.2500		103.5	164.9125		162.2	N	H	A	To Eugene Dispatch
13	Air-to-Ground	A/G PRI	ALL DIVS	167.0625		NONE	167.0625		NONE	N	H	A	Primary AIR TO GROUND
14	Air-to-Ground	A/G SEC	ALL DIVS	169.2000		NONE	169.2000		NONE	N	H	A	SECONDARY AIR TO GROUND
15	Air-to-Ground	VMED 29	MEDEVAC	155.3475		NONE	155.3475		156.7	N	H	A	Life Flight
16	EMERGENCY	AIRGUARD	EMERGENCY	168.6250		NONE	168.6250		110.9	N	H	A	EMERGENCY USE ONLY
Prepared By (Communications Unit Leader)													
Keith Brown - COM1 <i>Keith P. Brown</i> 64870008239440													
Lookout Communications (661) 349-1513													
Incident Location: Forest / Unit / Jurisdiction:													
County: State: OR Latitude: " N Longitude: W													

All Lookout fire resources should use Clone 93 Lookout as of 9/3/2023. All Divisions, use Command repeater that's best in your location.



INCIDENT RADIO COMMUNICATIONS PLAN (ICS 205)		Incident Name	Date/Time Prepared	Operational Period	Date/Time								
		<b>Bedrock</b>	9/19/2023	1900	09/20/2023 - All Shifts								
Zn Ch	Function	Channel Name/Trunked Radio System Talkgroup	Assignment	RX Freq	N or W	RX Tone/NAC	TX Freq	N or W	Tx Tone/NAC	Dev	Pwr	Mode A, D or M	Remarks
1	TACTICAL	TAC 1	North Repair	168.2500		136.5	168.2500		136.5	N	H	A	North Repair
2	TACTICAL	TAC 2	South Repair	166.7750		136.5	166.7750		136.5	N	H	A	South Repair
3	TACTICAL	TAC 3		166.7250		136.5	166.7250		136.5	N	H	A	UNASSIGNED
4	TACTICAL	TAC 4		168.6000		136.5	168.6000		136.5	N	H	A	UNASSIGNED
5	TACTICAL	TAC 5		168.2000		136.5	168.2000		136.5	N	H	A	UNASSIGNED
6	COMMAND	CMD 6	ALL BRANCHES	170.2500		136.5	162.8125		136.5	N	H	A	ALL - COMMAND (WEST) BEAR MTN
7	COMMAND	CMD 7	Not In Use	170.0000		136.5	166.6750		136.5	N	H	A	Not In Use
8	COMMAND	CMD 8	ALL BRANCHES	170.4125		136.5	165.9625		136.5	N	H	A	ALL - COMMAND (EAST) INDIAN FALL CRK
9	COMMAND	CMD 9	ALL BRANCHES	173.0375		136.5	167.3250		136.5	N	H	A	ALL - COMMAND (NE) PERNOT MTN
10	COMMAND	CMD 10	ALL BRANCHES	171.0375		136.5	162.1875		136.5	N	H	A	ALL - COMMAND (SOUTH) SINKER MTN
11	COMMAND	CMD 11	ALL BRANCHES	170.3125		136.5	164.6000		136.5	N	H	A	ALL - COMMAND SALMON BRANCH
12	TACTICAL	TAC 12		166.6000		136.5	166.6000		136.5	N	H	A	UNASSIGNED
13	Air-to-Ground	A/G PRI	ALL DIVS	172.4625		NONE	172.4625		NONE	N	H	A	Primary AIR TO GROUND
14	Air-to-Ground	A/G SEC	ALL DIVS	172.6750		NONE	172.6750		NONE	N	H	A	SECONDARY AIR TO GROUND
15	Air-to-Ground	VMED 29	MEDEVAC	155.3475		NONE	155.3475		156.7	N	H	A	Life Flight
16	EMERGENCY	AIRGUARD	EMERGENCY	168.6250		NONE	168.6250		110.9	N	H	A	EMERGENCY USE ONLY
Prepared By (Communications Unit Leader)		Keith P Brown		6497208588440		Incident Location:		Forest / Unit / Jurisdiction:					
Lookout Communications (661) 349-1513		County:		State: OR		Latitude: " N		Longitude: W					
All Divisions, use Command repeater that's best in your location.													

INCIDENT RADIO COMMUNICATIONS PLAN (ICS 205)			Incident Name		Date/Time Prepared		Operational Period Date/Time				
			<b>FOREST IA</b>		9/19/2023 1900		09/20/2023 - All Shifts				
Zn Ch	Function	Channel Name/Trunked Radio System Talkgroup	Assignment	RX Freq N or W	RX Tone/NAC	TX Freq N or W	Tx Tone/NAC	Dev	Pwr	Mode A, D or M	Remarks
1	TACTICAL	TAC 1	TAC 1	166.6000	136.5	166.6000	136.5	N	H	A	IA TAC
2	TACTICAL	TAC 2	RED NET	151.3400	156.7	151.3400	156.7	N	H	A	ODF RED NET
3	Air-to-Ground	A/G	White NET	151.3100	156.7	151.3100	156.7	N	H	A	ODF A/G
4	TACTICAL	PROJ MDL	PROJ MDL	168.7750	103.5	168.7750	103.5	N	H	A	USFS MIDDLE FORK PROJECT
5	COMMAND	TIMBER CK	TIMBER CK	170.4625	103.5	164.8250	131.8	N	H	A	USFS TIMBER CREEK
6	COMMAND	CMD 6	ALL BRANCES	170.2500	136.5	162.8125	136.5	N	H	A	BEDROCK COMMAND (WEST) BEAR MTN
7	COMMAND	CMD 7	Not In Use	170.0000	136.5	166.6750	136.5	N	H	A	Not In Use
8	COMMAND	LOWELL	LOWELL	170.4625	103.5	164.8250	110.9	N	H	A	USFS LOWELL
9	COMMAND	CMD 9	ALL BRANCES	173.0375	136.5	167.3250	136.5	N	H	A	BEDROCK COMMAND (N0) PERNOT MTN
10	COMMAND	CMD 10	ALL BRANCES	171.0375	136.5	162.1875	136.5	N	H	A	BEDROCK COMMAND (SOUTH) SINKER MTN.
11	Air-to-Ground	A/G 50	ALL DIVS	168.2875	NONE	168.2875	NONE	N	H	A	A/G PRIMARY - LOCAL
12	Air-to-Ground	A/G 59	ALL DIVS	169.1125	NONE	169.1125	NONE	N	H	A	A/G SECONDARY - LOCAL
13	Air-to-Ground	A/G PRI	ALL DIVS	172.4625	NONE	172.4625	NONE	N	H	A	AIR TO GROUND PRIMARY - BEDROCK
14	Air-to-Ground	A/G SEC	ALL DIVS	172.6750	NONE	172.6750	NONE	N	H	A	AIR TO GROUND SECONDARY - BEDROCK
15	Air-to-Ground	VMED 29	MEDEVAC	155.3475	NONE	155.3475	156.7	N	H	A	MEDICAL EVACUATION ONLY
16	EMERGENCY	AIRGUARD	EMERGENCY	168.6250	NONE	168.6250	110.9	N	H	A	EMERGENCY USE ONLY
Prepared By (Communications Unit Leader)			Incident Location:		Forest / Unit / Jurisdiction:						
Keith Brown - COM1			Lookout Communications (661) 349-1513		County: State: OR		Latitude: " N Longitude: W				
649760828284-0											

All Lookout fire resources should use Clone 93 as of 9/3/2023. All Divisions, use Command repeater that's best in your location.



**HEALTH AND SAFETY MESSAGE**  
*Pacific Northwest Incident Management Team 2*



<b>INCIDENT:</b> Lookout~Bedrock	<b>DATE:</b> 9/20/2023
----------------------------------	------------------------

**Your Brain is the most important tool you bring to the fire.**

- Firefighting is a mental, as well as, a physical activity.
- Personnel responsible for the safety of others should spend the majority of their time on the mental side of firefighting.
- Those mental activities include; planning, ensuring effective communication, monitoring the fire environment, anticipating problems and forecasting future needs.

**Major Hazards**

<b>CHIPPING</b>	<b>COMPLACENCY</b>	<b>HEAVY EQUIPMENT</b>
<b>BEES</b>	<b>LOG HAULING</b>	<b>HEAT IN HEAVY FUEL</b>
<b>SNAGS</b>	<b>STEEP TERRAIN</b>	<b>NEW FIRE -Pete's Lake</b>

**Snag Safety**

**S**ize up snag hazards in work area.  
**N**ever become complacent.  
**A**lways look up.  
**G**et weather reports.

**S**cout out parking, sleeping, and work areas and safety zones.  
**A**dvice co-workers of known hazards.  
**F**ace your hazard and take appropriate actions.  
**E**xamine work area for other hazards.  
**T**ake extra caution around heavy equipment.  
**Y**ou are ultimately responsible for **your own safety.**

<https://wildfiretoday.com/2020/02/22/analysis-of-53-firefighter-injuries-during-tree-falling-operations/>

**Heavy Equipment**

- ✓ Stay at least 100' in front
- ✓ Stay at least 50' behind
- ✓ Eye contact before approaching
- ✓ Stay back 2 1/2 times timber height
- ✓ Only operator on the equipment
- ✓ Avoid working downhill
- ✓ Establish visual and radio commo
- ✓ Communicate hazards to operator
- ✓ Operator may not see you

Take personal responsibility for your safety and those around you.

<https://lessons.fs2c.usda.gov/incident/uno-peak-fire-boulder-near-miss-2017>

PNW2 Safety Officers

## LOGISTICS MESSAGE

COMMUNICATIONS	Ph. 661-349-1513 Staffed 24 Hrs. (Lookout ICP)
----------------	--

ALL LINE ORDERS ARE TO GO THROUGH COMMUNICATIONS. (See line order form)

### Lookout ICP/Base (Walterville, OR)

Location	38656 Kickbusch Lane Walterville, OR 97478
Supply	Hours: 0600 – 2200 Phone: 423-220-7055
Laundry	Hours 0600 -1000 & 1500-2200
Fuel Truck	Hours: 0600 - 2100
Communications	Hours: 24 hour service
Kitchen	Hours: 0600 - 0900 Breakfast, Lunch pick up at reefer Hours: 1800 - 2100 Dinner
Weed Wash	Hours: 0700 - 1400 & 1600 - 2000
Showers	El Dorado: Hours: 0500 - 1200 & 1400 - 2200
Facilities Message:	Please email ALL Facility orders to 2023.Lookout.Facilities@Gmail.com
Ground Support	Hours: 0600 - 2130
Saw Shop	Hours: 0600 – 1100 & 1600 – 2200 Phone: 208-481-2589

### Lookout Staging (Rock Quarry)

Location	54547 McKenzie HWY
Ground Support	Hours: 0600 - 2130
Fuel Truck	Hours: 0600 - 2100
Weed Wash	Hours: 0700 – 1400 & 1600 - 2000

Location	27400 Big Lake Rd, Sisters OR 97759
Communications	Hours: 0600-2200
Ground Support	Hours: 0600 - 2130
Fuel Truck	Hours: 0600 – 2100
Showers	Backcountry: Hours: 0500 - 1200 & 1400 - 2200
Kitchen	Hours: 0600 - 0900 Breakfast Lunch pick up at refer Hours: 1800 – 2100 Dinner
Supply	0600 - 2200
Weed Wash	Hours: 0700 – 1400 1600 - 2000
Laundry drop off available next to refer trailer. Two day turn-around for all laundry.	

Transportation Contacts for Ground Support	
Lookout ICP	Eugene Quilter: 435-691-4130
Lookout Staging	Todd Griffin: 206-660-9644
HooDoo FOB	Mike Howard 541-602-0843

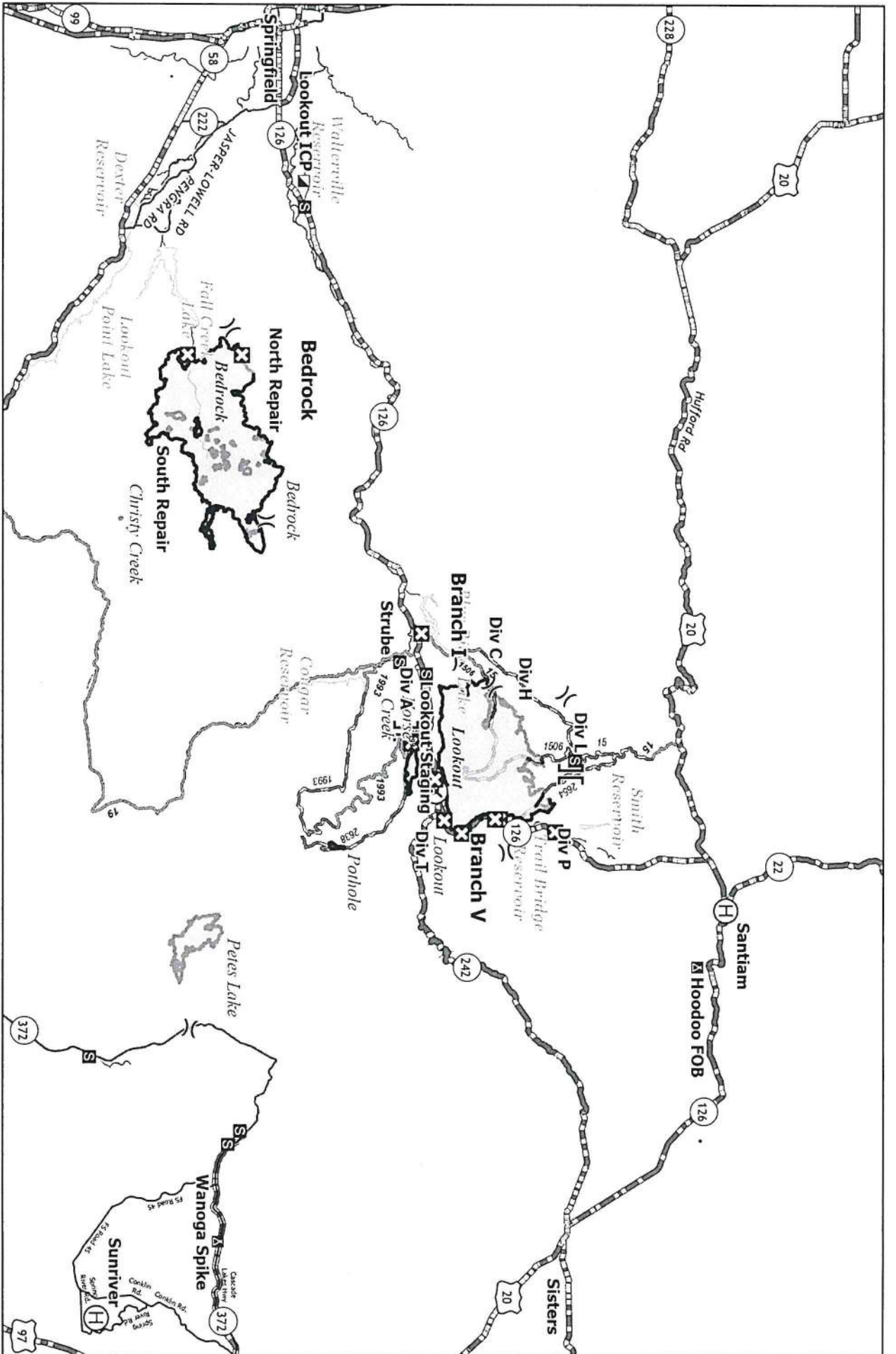
### Wanoga Spike

Location	HWY 46 – Cascade Lakes
Ground Support, Fuel, Supply, Mechanic	Hours: 0630 - 2130
Food:	Breakfast: 0600 - 0800 Dinner: 1830 - 2030

Hoodoo Forward Operating Base

**ORDERING: Lookout: [2023.lookout.ordering@firenet.gov](mailto:2023.lookout.ordering@firenet.gov)**  
**Bedrock: [2023.bedrock.ordering@firenet.gov](mailto:2023.bedrock.ordering@firenet.gov)**  
**Pete's Lake: [2023.peteslake.ordering@firenet.gov](mailto:2023.peteslake.ordering@firenet.gov)**





### Transportation

Bedrock - ORWIF-230266  
 Lookout - ORWIF-230327  
 Petes Lake - ORWIF-230409  
 09/19/2023

- ⊗ Airstrip or Airport
- ⊕ Helibase
- X Division Break
- II Branch Break
- ▣ Incident Command Post
- ⊠ Closure
- ▣ Camp
- ▣ Staging Area
- ▣ Fire Area



**Lookout ICP** : 38601 Camp Creek Road, Watterville, OR 97489  
 (14.5 Miles from Eugene, 19 min) - Weed Wash Station  
**Lookout Staging**: 54547 McKenzie Hwy, Blue River, OR 97413 - Weed Wash Station  
**Hoodoo FOB**: 27400 Big Lake Rd., Sisters, OR 97759 - Weed Wash Station  
**Wanoga Spike**: 15523 Cascade Lakes Hwy, La Pine, OR 97739



# Finance Message



Please email your CTRs & Shift Tickets to the fire listed on your resource order.

Lookout: 2023.lookout.finance@firenet.gov

Bedrock: 2023.bedrock.finance@firenet.gov

Petes Lake: 2023.peteslake.finance@firenet.gov

SUBJECT: *EQUIPMENT* for Contract Resources

SUBJECT: *TIME* for Fed, State, & Local Gov't Crews & Employees

Lookout ICP 661-349-1530

HooDoo Camp 971-713-0359

Comp Claims 360-318-5211

Please indicate the name & number **of the fire where you are working** on all CTRs & Shift Tickets

LOOKOUT QH2A OR-WIF-230327	HORSE CREEK QLQ0 OR-WIF-230392	PETES LAKE QLV9 OR-WIF-230409	POTHOLE QLK2 OR-WIF-230393	BEDROCK QEW8 OR-WIF-230266
----------------------------------	--------------------------------------	-------------------------------------	----------------------------------	----------------------------------

PLEASE SUBMIT ALL DOCUMENTS IN PDF FORMAT

### Documents you must submit to finance

Government & Cooperator Resources	Contract Resources
<ul style="list-style-type: none"> <li>• <b>Upon Check-In:</b> Crew Manifest, Cooperative Agreement (if applies), AD Hire Letter, Resource Order</li> <li>• <b>Daily:</b> Crew Time Report (CTR), Shift Tickets</li> <li>• <b>Demob:</b> Signed OF288, Final Equipment Use Invoice (Cooperator)</li> </ul>	<ul style="list-style-type: none"> <li>• <b>Upon Check-In:</b> Resource Order, Full Contract/Agreement, Certifications (<i>if required</i>), Pre-Inspection</li> <li>• <b>Daily:</b> Shift Tickets, receipts (fuel issues, claims, hotels, etc.)</li> <li>• <b>Demob:</b> Contractor Evaluations, Final Shift Tickets and receipt(s) for Addition/Deductions, Post-Inspection, Final Signed Invoices</li> </ul>

Contract Vendors, if you have been here for 14 days or more and wish to have an interim payment processed, please see finance.



If you are listed below – please call, email or visit finance. ☺

Finance is open at 0600 so please feel free to stop in before briefing!

PERSONNEL		BEDROCK EQUIPMENT		LOOKOUT EQUIPMENT	
<b>PETES LAKE</b>		E277	Adventure Medics	E190	A&H Forestry
O94	Davies, Justin	E327	Allied Water Service	O682	Adventure Medics
O75	Gritzner, Jason	E498	Axsus Enterprise	E184	Bear Creek
<b>BEDROCK</b>		E507	AXSUS ENTERPRISES LLC	E189	Brink Brothers
O727	Heidenreich, Noah	E524	BFC Limited	E616	Dean Innovations
<b>LOOKOUT</b>		E232	Bob Murry Logging	E649	Dean Innovations
O655	Bradley, Tyler	E508	Brink Brothers	O824	High Priority Consultants
O742	Domis Derek	E280	Brink Brothers	E22	J & D
E621	Grand Ronde 131	E200	Bucks Sanitary Service	E27	JB Logging
O644	Kranendonk, Donald	E450	Charles irelands	E672	T2 Inc
O587	Moore, Makoto	E164	J3 Contracting	E587	Timber Basin Contractors
O583	Mullings, Shaun	E544	J3 Contracting	E114-121	AAA Mobile BaseCamp
O572	Munoz, Mark	E479	J3 Contracting	E123	AAA Mobile BaseCamp
O684	O'Grady, Sean	E164	J3 Contracting	E35	American Med Response Northwest
E630.6	Parker, Preston	E451	J3 Contracting	E91	Bar Seven A Companies
O638	Richardson, Mark	E67	Lee Roy belloir & Sons	E17	David Browning
O712	Richmond, Colby	E523	Mark Jones	O55	HART (Meredith)
O498	Rinck, Moses	E148	Miller Timber	E1000*	HART (ODF)
O629	Sjogren, Jordan	E-41	Outback Firefighting	O419	High Priority Consultants
E630.2	Trapero, Kenneth	E503	Portable Rock Production	E345	Miller
O576	Velazquez, Rene	E174	Rude Logging		Minutemen EMS
O652	Young, Gavin	E497	Russells Management	E414	Pacific Ridgeline
		E496	Table Mountain Forestry	E433	Rough Country Response
		E129	Warren Kirk Partridge	E225	Statewide
		E431	Weyerhaeuser	E437	Water to go
		E181	Zeb's Tree Service	E360	Whitehead
		E29	Paragon Water Tenders		
		E274	Timber Basin Contractors		
		E432	Weyerhaeuser		

- \* PLEASE SHOW YOUR LUNCH BREAK – IF NO BREAK SHOWN IT MUST BE JUSTIFIED IN COMMENTS
- \* WHEN CLAIMING HAZARD PAY YOU MUST INCLUDE THE SUPPRESSION ACTION BEING PERFORMED. THIS INCLUDES OPERATIONS WHICH DIRECTLY SUPPORT CONTROL OF FIRE (E.G., ACTIVITIES TO EXTINGUISH THE FIRE, FIREFIGHTING, GROUND SCOUTING, SPOT FIRE PATROLLING, SEARCH AND RESCUE OPERATIONS, AND BACKFIRING). – PER PMS902 – YELLOW BOOK

# LOOKOUT and BEDROCK DEMOB LIST (09/19 TO 9/21)

If your Demob method of travel is by air, contact DMOB at (971) 762-8572 at least 72-hours in advance of your last work day.

**Day Before Your Demob:**

Contact FINANCE 24 hours prior to give them a heads-up you are departing and turn in any outstanding CTR/Shift Ticket. Make sure they are SIGNED. Confirm there is no missing financial documentation.

**Day of Demob STEP 1:**

Contact DMOB at 971-762-8572 or in person to obtain your Demob Check-Out Form (ICS 221) and to determine your specific next steps since we are pre-clearing personnel that do not have any supplies or communications equipment checked out.

**STEP 2:**

Have your vehicle "weed washed" at Lookout ICP; Hoodoo FOB or at Rock Quarry Staging Area.

**STEP 3 (if directed by DMOB):**

**SUPPLY** – see in person to return issued gear and leftover supplies

**COMMUNICATIONS** – see in person to return any communications equipment

**GROUND SUPPORT** – see in person to return incident rental vehicles, contractors to get an inspection, etc.

**STEP 4:**

Proceed to, or call, FINANCE at (661) 349-1530 at Lookout ICP or (971) 713-0359 at Hoodoo FOB to complete time closeout process and receive signed OF-288 or OF-286

**STEP 5:**

**Return to Demob for final closeout**

- Turn in any Unit Logs and Evaluations to Documentation Unit (Documentation Box).
- DMOB will verify check-out completion.
- Be prepared to address your actual departure date/time; your anticipated arrival date/time; and where you will be staying overnight if travel includes overnight stops.

## LOOKOUT

RO #	Item Code	Name	RO #	Item Code	Name
<b>September 19</b>			<b>September 19 Overhead Continuation</b>		
<b>AIR</b>			O-607	SECM	FORBEY, KEIRSTEN
A-107.5	UASP	DANIEL, LEONARD	O-654	SECM	RASMUSSEN, KREIG
			O-715.68	SITL	HRUSKA, JEREMY
<b>CREWS</b>			O-717	HEBM	BENTLEY, MICHAEL
C-85	CRW1	ENTIAT IHC			
<b>EQUIPMENT</b>			<b>September 20</b>		
E-38	MBM1	HIGHTOWER	<b>EQUIPMENT</b>		
E-96	FUT1	ED STAUB	E-3	AMB2	BEST PRACTICE
E-250	ENG3	OUTBACK	E-22	LOGL	J & D
E-253	ENG4	WOODPECKER	E-182	GWT2	L & C
E-255	ENG4	AAA THUNDERBOLT	E-231	MBM	JUSTIN PITTS
E-259	ENG4	AAA THUNDERBOLT	E-394	DZR2	DEREK CECILIANI
E-262	ENG4	CHEWACK	E-593	PUP1	RENTAL - O-506
E-266	ENG4	GE			
E-277	WTS2	BRONSON	<b>OVERHEAD</b>		
E-289	WTS2	HUGHES, PATRICK	O-447.6	SOF1	WAGNER, BRADLEY
E-301	ENG3	HEK JONES	O-642	HECM	WEAVER, ANTHOM
E-506	ENG6	TRI-STATE FIRE LLC	O-504	SEC2	SAWYER, STEVEN LEWIS
			O-506	ABRO	MILICH, KATE
<b>OVERHEAD</b>			O-522	SOF2	HARNDEN, RICHARD
O-495	FMOD	GROUND ZERO	O-559	HECM	BURKHOLDER, CLINTON
O-496	FMOD	BD TIMBER	O-561	COML	FORSYTH, WILLIAM
O-511	SEC1	PINO, ORLANDO	O-571	HEQB	PETERS, THOMAS
O-515	ABRO	PADILLA, LUCY	O-575	HEBM	SOULE, KIMBERLEY
O-525	TFLD	VER, GREGORY	O-583	TFLD	MULLINS, SHAUN
O-526	TFLD	WAUGH, MICHAEL	O-591	REAF	SIEVERS, NATHANIEL
O-534	HEQB	HELEBRANT, ERIC	O-596	HEQB	SENSECQUA, KELLY
O-541	HEQB	O'NEAL, DANIEL	O-607	SECM	FORBEY, KEIRSTEN
O-542	TFLD	KARN, JAMES	O-630	REAF	SANDERS, DAVID
O-545	EQTR	WARD, LISA	O-636	SOF2	MOTT, TODD
O-568	HEQB	ROWE, SHANE	O-638	REAF	RICHARDSON, MARK
O-592	RADO	COVEY, OLIVIA	O-655	HECM	BRADLEY, TYLER
O-594	PTRC	CONTRERAS, GAYLE	O-671	MEDL	HERRERA, RYAN
O-597	IMET	MCKELLAR, COLIN	O-715.70	SCKN	PFEFFER, ANNABELLE R



## LOOKOUT and BEDROCK DEMOB LIST (09/19 TO 9/21)

### September 21

#### CREWS

C-91	CR2I	PACIFIC OASIS 14A
C-93	CR2I	GRAYBACK 16B
C-74	CRWC	GRIZZLY FIREFIGHTERS -

#### EQUIPMENT

E-555	CHP1	MILLER TIMBER SERVICES
E-507	ENG6	R & R CONTRACTING
E-358	LOGT	BRINK BROTHERS INC
E-414	WEED	PACIFIC RIDGELINE
E-599	WEED	XTREME WILDLAND
E-508	ENG6	EARTH INDUSTRIES

#### OVERHEAD

O-574	DIVS	QUIST, IAN
O-640	HECM	PALMER, NICKOLAS
O-764	HEQB	JENSEN, JEREMY
O-649	TFLD	ABELL, MATTHEW
O-650	TFLD	BEYUKA, JAZZ E
O-652	TFLD	YOUNG, GAVIN
O-576	TFLD	VELAZQUEZ, RENE
O-590	ARCH	KIRKPATRICK, MOLLY
O-564	DIVS	MALOLO, PILA
O-651	DIVS	COBURN, JEFFREY
O-665	FELB	FOSTER, KEVIN
O-648	SEC1	WILCOX, JOSEPH
O-628	COMT	BEMELEN, MARK
O-653	BCMG	SLAVIK, SCOTT
O-624	EQPM	GRAY, JAMES A
O-587	IMET	MOORE, MAKOTO
O-773	PIOC	DAVIS, MARILYNN
O-604	SOFC	INGRAM, MATTHEW

## **BEDROCK**

RO #	Item Code	Name
------	-----------	------

### September 19

#### EQUIPMENT

E-148	WTS2	MILLER TIMBER (BDRK)
E-322	WTS2	S5 LAND SERVICES (BDRK)

### September 20

#### EQUIPMENT

E-31	STK1	TRAILS END BBQ CO
E-524	VROL	BFC LIMITED7 BDRK
E-528	LOGT	MARK JONES TRUCKING #3

### September 21

#### EQUIPMENT

E-41	HOSU	OUTBACK FRFIHTNG
E-473	WTS2	LEE ROY BELLOIR
E-468	EXC2	4-Q TIMBER
E-454	MBM2	J & D (

## *Training Message*

### ARE YOU ORDERED AS A TRAINEE?

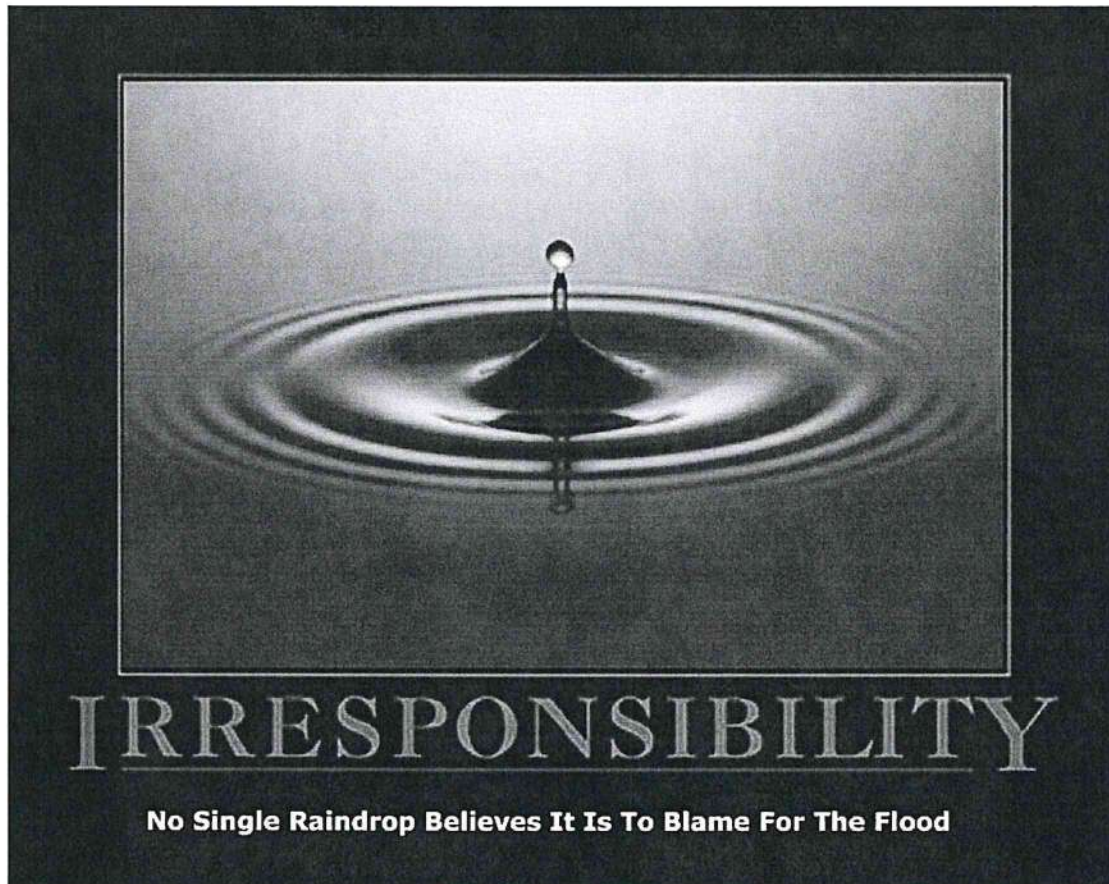
If you are ordered as a trainee, please sign up for the incident trainee program. You will be registered with the incident training specialist by filling out the questionnaire from the QR code in the IAP, please email scans or pictures of your incident qualification card and front cover of your task book to [Team10TNSP@yahoo.com](mailto:Team10TNSP@yahoo.com). During your time on this incident ensure you work with your trainer to complete the tasks you need evaluated if possible. Ensure your trainer evaluate your position task book tasks you are able to complete, and completes your position task book evaluation page as well as a performance evaluation (ICS-225). These forms are emailed to you once you complete the Trainee form. Upon completion of your assignment (***can be a couple days early to speed up demob***), please email, scans or pictures of your position task book evaluation and performance evaluation (ICS-225) to [Team10TNSP@yahoo.com](mailto:Team10TNSP@yahoo.com). These will be checked for accuracy, logged in the system, and sent on to your home unit training contact through email. I am working remotely. Please contact me if you have any further needs [Team10TNSP@yahoo.com](mailto:Team10TNSP@yahoo.com) or phone 360-490-5355, I look forward to serving you.

Training Specialist  
Neal Cox





**LOOKOUT/BEDROCK/HORSE CREEK  
/POTHOLE/PETES LAKE FIRES  
HUMAN RESOURCE MESSAGE**



**Each one of us counts. Each one of us is responsible for our own actions and attitudes.**



**If there is any way we can assist you,  
please don't hesitate to contact one of  
us.**

**Your Human Resource Specialists  
Teresa Smergut, 541-263-2283  
Mike Baines, 724-678-6147**

# Resource Advisor Message - Lookout Fire

Monte Kuk, Lead READ – Lookout & Bedrock Fire, 458-239-4080 monte.kuk@usda.gov

**With Rain coming in please make sure you pay attention to how firm the road bed you are on is and where you park. If there is anything where you are working that might limit water from flowing (plugged culvert, stuff in ditches, etc.) please try and make sure water can flow even if you can't do a full repair.**

## *Engineering and Roads*

- Do not track heavy equipment on paved roads without the proper mitigations (ie. street grousers, rubber mats, etc.).
- If any road issues or concerns are encountered, please contact a REAF.

## *Dozer Lines*

- Please work with Resource Advisors to clear proposed dozer lines.
- Please minimize the depth of the dozer line to the least extent required to meet objectives. Deep cuts are expensive, time consuming, and difficult to repair.

## *Heritage & Cultural*

All cultural resources and human remains are protected by law. **Leave them in place- no collecting.** Call Resource Advisor if cultural resource like arrowheads, flakes/chips, or historic artifacts like cans & bottles are found and they will investigate.

## *Noxious Weeds*

### WEED WASH STATION:

- The Weed Wash stations are operational and located at Strubb Flat, Kickbrush & Hoodoo
- Please use the weed wash upon arrival at the incident, and during demob
- Avoid the following weed: Slender False Brome and Spotted Knapweed

REDUCE THE SPREAD: Brush off packs & boots (especially laces) before leaving fire camp.



## *Tree Felling Operations*

Please keep equipment on road surface to the greatest extent possible

### Log Processing:

- Utilize existing openings and landings for decking, ditch lines/roadside is acceptable
- Process trees down to a 6" top (small end diameter). Use remaining for firewood logs, rehab, or chip
- Preferred Log Lengths (maximize length whenever possible): 41 foot Max – 17 foot Min
- 2' increments below 41', keeping logs as long as possible (41', 39', 37', etc....) Process unburnt trees on the unburnt side of the fireline. Process burnt trees on the burnt side of the fireline.
- Keep processed slash and tops out of decks and off roads
- If possible, sort decks by species and log lengths

### Snags and Hazard Trees:

Old growth is a key value. Limit snagging to operational needs & limit bucking to retain long bowls of large felled trees or snags.

## *Water Quality and Fisheries*

### AERIAL DIPPING:

- Aerial dipping should only occur at approved dip sites. Blue River Res. has a use restriction to facilitate dipping. Check with your REAF for approval of dipping sites.
- Be sure to wash buckets when new aerial resources arrive at the fire, when switching dips sites, or when returning to the fire from off forest.

### WATER DRAFTING:

- Limited Drafting is available at the bridge across Lookout Creek on the 1506 road in section 28. Check with the REAF for additional drafting locations as needed.
- Utilize fish screens when in fish bearing waterbodies (REAFs have these available).
- Maintain sufficient flow as to not dewater downstream reaches
- Utilize splash pans and absorbent pads. REAFs will assist if given the location.

### GROUND BASED RETARDANT APPLICATION:

- Provide a 75 foot buffer from riparian areas with live water when applying ground based retardant.

### CHIPPING STANDARDS:

- Provide a 30- foot buffer of no chipping at water crossings or culverts.
- Do not place chips into road ditch.
- Do not chip onto a steep slope where chips will slide back into the ditch.
- Broadcast chipped material, ensuring that chips are no more than 4" deep.



## Pete's Lake - -READ MESSAGE

### Shaded Fuel Break Specifications

- Treat off of road road shoulder as directed, leaving a minimum of one tree every 20 feet spacing

Preferred leave tree species (from most desired leave to least desired):

- **Whitebark pine – do not cut** **READs**
  - **Western White Pine – do not cut** Jason Gritzner 541-408-1846
  - Spruce Jason Wilcox 503-319-2408
  - Mountain Hemlock
  - Douglas-fir
  - Ponderosa Pine
  - White Fir
  - Lodgepole Pine
- Preferred log length to a minimum 5 inch top:
    - 16' 6", 25', 29', 33'
  - 8 in. minimum trees to deck
  - **Max Cut 17 in. DBH**
  - Keep slash in landings a minimum 25 feet from dripline of live standing trees.
  - Log Landings size approximately 100ft. by 100 ft.; consult with READ on locations.
  - Tracked equipment no activity within 50 feet of live water.
  - Tracked equipment no activity within 30 feet of dry stream.
  - Avoid removing trees that have signs/blazes on them as much as possible

### Fuels Treatment Specifications around Recreation Sites (specified by READs)

- Thin trees less than 4 in. DBH as directed
- Avoid removing trees that have signs/blazes on them as much as possible
- 10 foot spacing between leave trees for 20 feet off roads
- 20 foot spacing between leave trees interior to 20 feet off roads
- Cut lodgepole pine first
- Flush cut stumps within 50 feet from Highway 46
- Do not leave sharp stumps in recreation area
- Retain trees along streams (don't cut any trees within 20 feet of wet or dry stream banks, unless deemed hazard trees or otherwise directed).

### Flagging Guide

**Blue: ATP (Area to Protect)...refer to flags for written specifications**

**Orange: End Haul Site location (slash, logs, chips, etc.)**

### Chipping Specifications

- Spread chipped material to a max depth of 3 inches unless otherwise directed to pile.





## HELICOPTER EXTRACTION OPERATIONS

The intent of helicopter insertion/extraction operations is to facilitate the movement of personnel to and from inaccessible areas. These operations are not meant to be a medical transport resource; life flight and ground transportation should always be ordered in addition to the extraction aircraft and crew.

### ORDERING:

- On-scene EMT and/or Incident within Incident IC determines that an extraction helicopter is needed and places the order through the pre-established procedures:
  - Division Supervisor
  - Incident Communications
  - Dispatch Center
- When ordering extraction aircraft provide the following information:
  - Location (Lat/Long) of patient
  - Known Hazards
  - Wind Speed and Direction
  - Terrain
  - Incident Updates

### SITE SELECTION:

- The helicopter crew will confirm the extraction location when they arrive on scene. However, a general rule is any clearing that is 10'x10' with visible sight lines to the sky is a suitable extraction site.
- If the terrain is steep, excavating a platform or shelf can make it easier for patient packaging.

QR Code-Short-haul Site Selection Video



### CONSIDERATIONS:

- Short-haul and hoist are safe and efficient operations for extracting injured personnel of any severity including "Green" patients.
- Ensure area is clear of non-essential items, hazards, and personnel.
- Rotor wash may affect overhead hazards and blowing dust/debris can create brown out conditions or influence fire behavior.
- Aerial Supervision is valuable for coordinating aviation medevac/extraction missions and should be ordered if available and not currently present.
- The aircrew will make the final assessment of the mission. Always have a contingency plan in case a helicopter cannot complete the request.

### DEFINITIONS:

**Rescue Hoist:** A cable winching device mounted to the helicopter that can lower/raise persons attached to a cable.

- Common cable lengths are 250-300 feet.

**Short-haul:** To insert or extract one or more persons suspended on a fixed line beneath a helicopter.

- Common short-haul line lengths are 100, 150, and 250 feet. The lines can also be connected for a longer line if the situation requires it.

Incident/Project Name		Operational Period						
<b>LOOKOUT/BEDROCK</b>		Date/Time:	<b>09/20 - 09/21 0700-0700</b>					
Ambulance Services								
Name	Complete Address	Phone & EMS Frequency	Advanced Life Support (ALS) Yes No					
AMBO 308 (Lookout Transport)	Blue River Reservoir	Command Channel	X					
Bend Fire Department	1212 SW Simpson Ave, Bend, OR 97702	911 / 541-693-6911	X					
Sister-Camp Sherman R.F.P.D	301 South Elm Street Sisters, OR		X					
Eugene/Springfield Fire (Lookout Transport)	1705 W. 2 <sup>nd</sup> Ave Eugene, OR	Lane County 911	X					
Oakridge Fire (Bedrock Transport)	47592 Hwy 58 Oakridge, OR	Lane County 911	X					
Air Ambulance Services								
Name	Phone	Type of Aircraft & Capability						
Life Flight – Eugene or Redmond	Order through Lookout Comms 800-232-0911	Critical Care Team of Paramedics and RN NVG, Freq: VMED 29						
Airlink - Bend	Order through Lookout Comms 800-353-0497	Critical Care Team of Paramedics and RN NVG, Freq: VMED 29						
Teton Short Haul	Ordered by Lookout Comms	ALS, Short Haul, not-dedicated to the incident – Daytime use only						
Hospitals								
Name Complete Address	GPS Datum – WGS 84 Coordinate Standard Degrees Decimal Minutes		Travel Time Air Gnd		Phone	Helipad Yes No		Level of Care Facility
	Lat:	Long:	FAA					
PeaceHealth Sacred Heart Medical Center 333 Riverbend Drive Springfield, OR 97477	44° 04.876' N	123° 01.588' W	10 min	20 min	541-222-6931	X		Level 2 Trauma
	OG64							
St Charles Bend 2500 NW Neff Rd Bend, OR 97701	44°04.1023'N	121°16.0537'W	45 mins	2 hours 20 min	541-382-4321	X		Level 2 Trauma
	54OR							
Legacy Emanuel Hospital 3001 N Gantenbein Ave Portland, OR 97227	45°32.6679'N	122°40.2933'W	45 mins	2 hours	(406) 329-5635	X		Level 1 Trauma Burn Center
	7OR5							
OHSU Hospital 3181 SW Sam Jackson Park Rd, Portland, OR 97239	45°29.9498'N	114°29.7 W	45 mins	2 hours	ER (503) 494-7550	X		Level 1 Trauma
	80ID							



**MEDICAL PLAN (ICS 206 WF)**  
**Controlled Unclassified Information//Basic**

Division   Branch   Group	Area Location Capability		
<b>ICP</b>	<b>EMS Personnel:</b>	Dave O'Brien MEDL Magenta Widner MEDL(t) Mari Bottoms MEDL(t) Ryan Herrera MEDL AMBO 310 - Ian Morse (EMPF)	360-624-8023 360-410-5433 541-403-1703 253-297-0537 423-596-1335
	<b>Equipment Available on Scene:</b>	ALS Ambulance, Medical Yurt w/ OTC Meds	
	<b>Medical Emergency Channel:</b>	Lookout Communications	
	<b>Approved Helispot:</b>	N/A	
<b>BEDROCK NORTH REPAIR</b>	<b>EMS Personnel:</b>	REMS 43 - Kamron Greer (EMPF) 832-585-6044 MEDIC TEAM 38 - Branton Thompson (EMPF) 479-957-8580 AMBO 15 - Lucy Cummins (EMPF) 567-274-8888	
	<b>Equipment Available on Scene:</b>	ALS Ambulance, UTV w/ Technical Rescue, ALS w/ UTV	
	<b>Medical Emergency Channel:</b>	Bedrock Communications	
	<b>Approved Helispot:</b>	H-2, H-5, Cascara Camp	
<b>BEDROCK SOUTH REPAIR</b>	<b>EMS Personnel:</b>	AMBO 10 - Andre Martoni (EMPF) 612-707-8496 EMT 119 - Nadia Jenman (EMTF) 816-666-0534	
	<b>Equipment Available on Scene:</b>	ALS Ambulance, ALS w/ UTV	
	<b>Medical Emergency Channel:</b>	Bedrock Communications	
	<b>Approved Helispot:</b>	H-5, H-10, H-32	
<b>BRANCH I DIV A/C</b>	<b>EMS Personnel:</b>	AMBO 308 - Ali Hammoudeh (EMPF) 973-968-9455 MEDIC 222 - Ritvik Chakraborty (EMPF) 678-308-3264	
	<b>Equipment Available on Scene:</b>	ALS Ambulance (Transport Only)	
	<b>Medical Emergency Channel:</b>	Lookout Communications	
	<b>Approved Helispot:</b>	H-1, H-2, H-20, H-30, H-40	
<b>BRANCH I DIV H</b>	<b>EMS Personnel:</b>	RAT 6 - Mike Planeta (EMTF) 623-332-4262 AMBO 303 - Kyle Mead (EMPF) 561-317-996 MEDIC 228 - Kyle Kemerer (EMPF) 650-868-2803	
	<b>Equipment Available on Scene:</b>	ALS w/ UTV, ALS Ambulance	
	<b>Medical Emergency Channel:</b>	Lookout Communications	
	<b>Approved Helispot:</b>	H-2, H-30, H-40	
<b>BRANCH I DIV L</b>	<b>EMS Personnel:</b>	RAT 7 - Raul Ruiz (EMPF) 915-504-8955 AMBO 301 - Ethan Beiderman (EMPF) 513-882-2837 MEDIC 221 - Jacob Smith (EMPF) 808-829-9623 EMT 108 - Stephan Blaskovics (AEMF) 757-615-8212	
	<b>Equipment Available on Scene:</b>	ALS Ambulance, UTV w/ Technical Rescue	
	<b>Medical Emergency Channel:</b>	Lookout Communications	
	<b>Approved Helispot:</b>	H-40	

**MEDICAL PLAN (ICS 206 WF)**  
**Controlled Unclassified Information//Basic**

<b>BRANCH V DIV P</b>	<b>EMS Personnel:</b>	RAT 5 - Jeff Farris (EMPF) 623-826-8258 AMBO 306 - Stephen Spigelman (EMPF) 929-248-0242 MEDIC 213 - Breianah Riojas-Purinton (EMPF) 602-931-3448 EMT 120 - Trayse Riggle (EMTF) 541-805-5585
	<b>Equipment Available on Scene:</b>	ALS Ambulance, UTV w/ Technical Rescue
	<b>Medical Emergency Channel:</b>	Lookout Communications
	<b>Approved Helispot:</b>	H-1, H-41
<b>BRANCH V DIV T</b>	<b>EMS Personnel:</b>	MEDIC 230 - David Stanton (EMPF) 206-819-6053 MEDIC 223 - Benjamin Sholl (EMPF) 757-773-4688 EMT 124 - Daniel Hilberg (EMTF) 951-541-3351
	<b>Equipment Available on Scene:</b>	ALS
	<b>Medical Emergency Channel:</b>	Lookout Communications
	<b>Approved Helispot:</b>	H-1
<b>BRANCH V HORSE CREEK POTHOLE</b>	<b>EMS Personnel:</b>	RAT 4 - Rick Bostian (EMPF) 479-422-0462 AMBO 309 - Chris Howard (EMPF) 979-571-2916 MEDIC 231 - Luke Eversole (EMPF) 480-326-5676
	<b>Equipment Available on Scene:</b>	UTV w/ Technical Rescue, ALS Ambulance
	<b>Medical Emergency Channel:</b>	Lookout Communications
	<b>Approved Helispot:</b>	H-1
<b>BRANCH V WHITE PINE</b>	<b>EMS Personnel:</b>	MEDIC 229 - Nathan Davis (EMPF) 816-844-5859 EMT 121 - Lacy Singhose (EMTF) 541-589-4175
	<b>Equipment Available on Scene:</b>	ALS, UTV w/ Technical Rescue
	<b>Medical Emergency Channel:</b>	Lookout Communications
	<b>Approved Helispot:</b>	H-1
<b>PETE'S LAKE</b>	<b>EMS Personnel:</b>	REMS 1 - Sage Stewart (EMTF) 479-806-0860 AMB 311- Sam Nakashini (EMPF) 440-596-2043
	<b>Equipment Available on Scene:</b>	ALS w/ OTC Meds, ALS w/UTV, technical rope rescue
	<b>Medical Emergency Channel:</b>	Lookout Communications
	<b>Approved Helispot:</b>	H-3
<b>NIGHTS</b>	<b>EMS Personnel:</b>	AMBO 304 - Russell Long-Thompson (EMPF) 514-965-1183 MEDIC 227 - Jes Tews (EMPF) 775-745-4012 MEDIC 224 - Alexander Pizzonia (EMPF) 413-446-8315 EMT 123 - Ian Roy (EMTF) 707-508-9620 EMT 122 - Ethan Jarrett (EMTF) 479-312-0972
	<b>Equipment Available on Scene:</b>	ALS Ambulance
	<b>Medical Emergency Channel:</b>	Lookout Communications
	<b>Approved Helispot:</b>	H-1, H-2



## MEDICAL PLAN (ICS 206 WF)

Controlled Unclassified Information//Basic

<b>HOODOO FOB</b>	<b>EMS Personnel:</b>	MEDL(t) - Necole Ontko (EMPF) 541-815-6365 AMBO 307 - Jeffrey Kwiecien (EMPF) 570-394-2707	
	<b>Equipment Available on Scene:</b>	ALS w/ OTC Meds	
	<b>Medical Emergency Channel:</b>	Lookout Communications	
	<b>Approved Helispot:</b>	N/A	
<b>SANTIAM HELIBASE</b>	<b>EMS Personnel:</b>	MEDIC 226 - Steve McDowell (EMPF) 208-949-7936	
	<b>Equipment Available on Scene:</b>	ALS w/ OTC Meds	
	<b>Medical Emergency Channel:</b>	Lookout Communications	
	<b>Approved Helispot:</b>	Santiam Helibase	
<b>SUN RIVER HELIBASE</b>	<b>EMS Personnel:</b>	MEDIC 225 - Josh Puskar (EMPF) 440-796-6903	
	<b>Equipment Available on Scene:</b>	ALS w/ OTC Meds	
	<b>Medical Emergency Channel:</b>	Lookout Communications	
	<b>Approved Helispot:</b>	Sun River Helibase	
<b>Prepared By (Med Unit Leader)</b>	<b>Date/Time</b>	<b>Reviewed By (Safety Officer)</b>	<b>Date/Time</b>
Dave O'Brien    MEDL Magenta Widner    MEDL(t)	09/19/2023 - 2000	<i>Marshall Brown</i> SOF1	09/19/2023 - 2000



## EMERGENCY PLAN INCIDENT WITHIN AN INCIDENT

### ON SCENE INCIDENT COMMANDER

In the event of an accident or medical incident of any size, your primary responsibility is to ENSURE that the victim(s) receive prompt and effective Triage, Treatment, Extrication and Transport.

- **ENSURE THE MEDICAL INCIDENT REPORT IN THE INCIDENT ACTION PLAN IS BEING USED AND FOLLOWED- \*IF DETERMINED TO BE A GREEN THAT REQUIRES TRANSPORT BACK TO CAMP OR TO A MEDICAL FACILITY, DO NOT DECLARE EMERGENCY TRAFFIC AND ONLY COMPLETE LINE 1-4 ON MEDICAL INCIDENT REPORT\*.**
- Conduct size-up of the incident nature of accident, number type of resources involved, latitude and longitude location (DD°MMM.MM format): notify incident communications center and supervisor, request assistance as needed.
- Order and coordinate medical and support response to the accident.
- Evaluate special needs (law enforcement, haz mat, etc.).
- Clear the command frequency if medical emergency, coordinate with incident communications and air attack for air medical transportation needs.
- Preserve and photograph the scene for accident investigation.
- Remain aware of surroundings and the status of the main incident (delegate personnel to monitor the main fire) to ensure safety of medical treatment personnel.
- Until relieved, supervise and manage all personnel involved at the incident scene.



# MEDICAL PLAN (ICS 206 WF)

Controlled Unclassified Information//Basic

## Medical Incident Report

**FOR A NON-EMERGENCY INCIDENT, WORK THROUGH CHAIN OF COMMAND TO REPORT AND TRANSPORT INJURED PERSONNEL AS NECESSARY.**

**FOR A MEDICAL EMERGENCY: IDENTIFY ON-SCENE INCIDENT COMMANDER BY NAME AND POSITION AND ANNOUNCE "MEDICAL EMERGENCY" TO INITIATE RESPONSE FROM IMT COMMUNICATIONS/DISPATCH.**

**Use the following items to communicate situation to communications/dispatch.**

**1. CONTACT COMMUNICATIONS / DISPATCH** (Verify correct frequency prior to starting report)

*Ex: "Communications, Div. Alpha. Stand-by for Emergency Traffic."*

**2. INCIDENT STATUS:** Provide incident summary (including number of patients) and command structure.

*Ex: "Communications, I have a Red priority patient, unconscious, struck by a falling tree. Requesting air ambulance to Forest Road 1 at (Lat./Long.) This will be the Trout Meadow Medical, IC is TFLD Jones. EMT Smith is providing medical care."*

Severity of Emergency / Transport Priority	<input type="checkbox"/> <b>RED / PRIORITY 1 Life or limb threatening injury or illness. Evacuation need is IMMEDIATE</b> <i>Ex: Unconscious, difficulty breathing, bleeding severely, 2° – 3° burns more than 4 palm sizes, heat stroke, disoriented.</i> <input type="checkbox"/> <b>YELLOW / PRIORITY 2 Serious Injury or illness. Evacuation may be DELAYED if necessary.</b> <i>Ex: Significant trauma, unable to walk, 2° – 3° burns not more than 1-3 palm sizes.</i> <input type="checkbox"/> <b>GREEN / PRIORITY 3 Minor Injury or illness. Non-Emergency transport</b> <i>Ex: Sprains, strains, minor heat-related illness.</i>	
Nature of Injury or Illness & Mechanism of Injury		<i>Brief Summary of Injury or Illness (Ex: Unconscious, Struck by Falling Tree)</i>
Evacuation Request		<i>Air Ambulance / Short Haul/Hoist Ground Ambulance / Other</i>
Patient Location		<i>Descriptive Location &amp; Lat. / Long. (WGS84)</i>
Incident Name		<i>Geographic Name + Medical (Ex: Trout Meadow Medical)</i>
On-Scene Incident Commander		<i>Name of on-scene IC of Incident within an Incident (Ex: TFLD Jones)</i>
Patient Care		<i>Name of Care Provider (Ex: EMT Smith)</i>

**3. INITIAL PATIENT ASSESSMENT:** Complete this section for each patient as applicable (start with the most severe patient)

Patient Assessment: See IRPG PAGE 106

Treatment:

**4. EVACUATION PLAN:**

Evacuation Location (if different): (Descriptive Location (drop point, intersection, etc.) or Lat. / Long.) Patient's ETA to Evacuation Location:

Helispot / Extraction Site Size and Hazards:

**5. ADDITIONAL RESOURCES / EQUIPMENT NEEDS:**

*Example: Paramedic/EMT, crews, immobilization devices, AED, oxygen, trauma bag, IV/fluid(s), splints, rope rescue, wheeled litter, HAZMAT, extrication*

**6. COMMUNICATIONS: Identify State Air/Ground EMS Frequencies and Hospital Contacts as applicable**

Function	Channel Name/Number	Receive (RX)	Tone/NAC *	Transmit (TX)	Tone/NAC *
COMMAND					
AIR-TO-GRND					
TACTICAL					

**7. CONTINGENCY: Considerations:** If primary options fail, what actions can be implemented in conjunction with primary evacuation method? Be thinking ahead.

**8. ADDITIONAL INFORMATION:** Updates/Changes, etc.

**REMEMBER:** Confirm ETAs of resources ordered. Act according to your level of training. Be Alert. Keep Calm. Think Clearly. Act Decisively.