
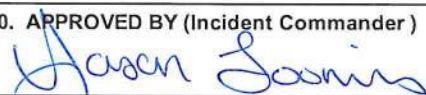


ICS Form 202 INCIDENT OBJECTIVES	1. INCIDENT NAME Bedrock / Lookout / Pothole / Horse Creek / Pete's Lake	2. DATE 09/20/23	3. TIME 1900
4. OPERATIONAL PERIOD (DATE/TIME) 09/21/2023 0700 – 2000			
5. GENERAL CONTROL OBJECTIVES FOR THE INCIDENT (INCLUDE ALTERNATIVES)			
<p>Strategic Framework Implement a full suppression strategy on Bedrock, Lookout, Pothole, and Horse Creek fires; and confine, contain, and point protection strategy on Petes Lake fire within the delegation of authority. Values at risk include human safety, communities, private property, commercial timber land, family timber land, Eugene Water and Electric Board Dam, Hwy 46, Hwy 126, Elk Lake Resort, and other identified infrastructure. Apply tactics that offer the highest probability of success to meet intent and objectives while considering risk to personnel.</p> <p>Leaders Intent</p> <ul style="list-style-type: none"> • Human Factors: We will ensure that all personnel be treated with dignity and respect. We have zero tolerance for harassment, alcohol, or drug use. We will engage in all work assignments with a high degree of integrity, professionalism and provide excellent customer service to our responders, our agencies and our public. • Safety & Risk Management: Firefighter, responder, aviator and public safety will be addressed through hazard identification, assessment and where practicable, mitigated. • Operations: Prioritize missions that consider risk benefit trade-offs, provide higher probability of success given on scene and expected resource capability. We will consistently evaluate environmental factors and timing of implementing strategies. • Agency Coordination: We will keep the Willamette National Forest, Bureau of Land Management and Oregon Department of Forestry informed of significant accomplishments, foreseen challenges and address concerns. • Communication: We are committed to and will coordinate with the local community to enhance key partnerships and relationships by effectively ensuring transparent, timely and accurate communication is shared. • Fiscal Accountability: As a responsibility and duty to the to the agencies and the public, we will monitor cost effective methods for accomplishing incident objectives and overall management of the incidents. <p>Management Objectives</p> <ol style="list-style-type: none"> 1. Provide for the safety of firefighters, aviators and public through utilization of strategic and deliberate risk assessment. Use a deliberate risk process that might include Incident Strategic Alignment Process ISAP to evaluate operational hazards, probabilities of success and consequences of failure when designing operational missions. 2. Limit fire spread and impacts to communities at risk, private land including industrial timber, family forest lands, recreational areas, Eugene Water and Electric Board Dam, H.J. Andrews experimental forest, Hwy 126 and other identified values of risk. 3. Maintain and enhance relationships with the public we serve, the agencies we are assisting and the responders that we are responsible for supporting. 4. Provide initial attack support to all lands in the designated TFR's and to those outside of TFR upon request. 5. Adhere to the control objectives, task/purpose/end state in each Division Assignment (204) to include mitigating and repairing adverse effects to resources resulting from fire suppression activities. Approved suppression repair plans include specific actions needed to stabilize the adverse effects in the fire area. 			
6. WEATHER FORECAST FOR OPERATIONAL PERIOD See Attached.		7. GENERAL SAFETY MESSAGE See Attached.	
8. ATTACHMENTS			
Organization List (ICS 203) Weather Forecast Fire Behavior Forecast	Medical Plan (ICS 206) Communications Plan (ICS 205) ICS 214	Safety Message Assignments (ICS 204) Air Operations Summary (ICS 220)	
9. PREPARED BY 		10. APPROVED BY (Incident Commander) 	

ORGANIZATION ASSIGNMENT LIST	
1. Incident Name	
Bedrock / Lookout / Horse Creek / Pothole / Pete's Lake	
2. Date 09/20/2023	3. Time 1800
4. Operational Period 09/21/23 0700 – 2000	
5. Incident Commander and Staff	
Position	Name
Incident Commander	Jason Loomis / John Szulc (t) / Chris Hutsell (t)
Safety Officer	Marshall Brown / Rob Poyner / Mark Munns / Seth Williams (t)
Information Officer	Chris Barth / Mike Johnson / Kale Casey / Jacob Welsh (t)
Liaison Officer	Don Turner / Kristen Bonanno (t)
Human Resources	Teresa Smergut / Mike Baines
Medical Unit Leader	Dave O'Brien / Magenta Widner (t) / Mari Bottoms (t)

6. Agency Representative	
Agency	Name
USFS AA	WIL - Darren Cross / Gabe Wishart / Heath Perrine / Allen Hambrick / Sarah Clawson DES - Holly Jewkes / Robert Gentry
BAER Team	John Chatel / Wendy Peterman (t)
ODF AA	Chris Cline
ODF Agency Rep	John Flannigan / Craig Pettinger
BLM AA	Dennis Teitzel
Lane County Captain	JD Mann (Bedrock) / Cliff Harrold (Lookout)
Giustina Land and Timber	Kenny Rose
Fruit Growers	Jim Crawford
Campbell Group	Jim Hunt
Weyerhaeuser Group	Albert Kastle / Jeanne Olson
HJ Andrews Exper. Forest	Mark Schultz
Lead READ	Monty Kuk

7. Planning Section	
Position	Name
Chief	Scott Koehler / Trent Marty / Brenda Hallmark / Monica Ramirez (t) / Alyssa Dawson (t)
SITL	Matt Provencher / Jason Thivener / Jerry Boggio (t) / Emilie Bedard (t)
RESL	Nicole LaGioia
GISS	Mike Cibicki / Lexi Holder / William Otto / Chantelle Delay / Bryant Mecklem (t) / Tiffany Manger (t) / Frank Bifone (t)
DOCL	Paula Knapp
DEMOB	Brenda Bramwell
SCKN	Dina Peek
FBAN	Drew Taylor
IMET	Makoto Moore / Ryan Walbrun / Brian Adams (t)
LTAN	Joe Hernandez (t)
ARA	Josh Hall / Amara Holder (t)
TNSP	Neal Cox

8. Logistic Section	
Position	Name
Chief	Nick Swagger / Kent Koeller / Benjamin Goodin (t) / Tony Mule (t)
Supply Unit	Jaime Chopp / TJ Wharton / Dave Cooper

Facilities Unit	Cliff Piper / Russel Hovey
Food Unit	Debra Foote / Kristy Naughton
COML	Keith Brown
Ground Support	Carlos Velez / Duane Chatham / Michael Howard / Jeffrey Burdine (t)
ITSS	Jim Grace / Flint Buchman / Jeff Hixon
SECM	Tyler Smith

9. Operations Section	
Lead Ops	Sonny Caldwell
Strategic Ops	Kyle Cannon
Field Ops	Terry Walter / Dan Trapanese (t)
Planning Ops	Brandon Lewis / Jacob Gear (t)

a. Branch Bedrock	
Branch Director	Chris Lundgren / Ken Foss (t)
Division North Repair	Wes Wentworth / Meg Fluharty (t)
Division South Repair	Ted Piehl / Shane Orser (t)

b. Branch I	
Branch Director	Sam Tacchini / Josh Verellen (t)
Division A / C	Eric Kiehn / Nathan Basford (t)
Division H	Eric Messenger / Zone Brown / Mike Starr (t)
Division L	Darek Pepple / Colbey Richmond (t)

c. Branch V	
Branch Director	Thom Taylor / Brian Bates (t)
Division P	Mark Munoz / Thomas Goheen
Division T	Cam Chambers / Kip Van DeWater (t)
Division Horse Creek / Pothole	Amy McClave / Cody St. Clair (t)

d. Equipment Group	
Division	Thad Niebel / Gary Crombie

e. Lookout Staging	
Staging Manager	Todd Griffin

f. Pete's Lake	
Field Ops	Reggie Bray
Division	James Honanie / Chris Burford (t)

g. Roads Group	
Roads Bedrock North	Duane Chatham
Roads Bedrock South	Duane Chatham
Roads Lookout	Duane Chatham

h. Air Operations Branch	
Branch Director	Cory Dolberry / Kyle Stump (t)
ASGS	Greg Scully
ATGS	Joe Tone

10. Finance Section	
Position	Name
Chief	Mariah Morris - Titus / Glenda Lindsay
Time Unit Leader	Linzey Scott / Eric Goddard (t)
Cost Unit Leader	Christy Graham
Equipment Time	Cynthia Sperling / Maria Trujillo / Dorothy Myers / William Devore / Miriam Hubbard (t)
Personnel Time	Shonni Nelson / Ana Bacoch (t) / JoAnne Gomez / Victoria Ramirez
Comp/Claims	Jessica McAloon / Amy Kenny (t)
Procurement	Juanita Dickson / Luis Carrillo (t)
ICPI	Doug Simler
COPA	Sonia Torres

Prepared by (Resource Unit Leader)	Nicole LaGioia
------------------------------------	----------------



Fire Weather Forecast

Thursday September 21, 2023



FORECAST NO: 58 FIRE: Bedrock/Lookout/Horse Creek/
Pothole/Pete's Lake

PREDICTION FOR: Thursday, Sep 21, 2023 UNIT: Willamette N.F.
ISSUED: 2000, Sep 20, 2023 Incident Meteorologist: Brian Adams (T)

- DISCUSSION: Skies become mostly cloudy Thursday afternoon, with slight chances (30%) for light showers mainly near Pete's Lake. Clear skies, warmer temperatures, and lower humidity expected for Friday.

THURSDAY:

- WEATHER: Mostly clear in the morning becoming mostly cloudy in the afternoon. 30% chance of light showers between 1100-1800, accumulations of 0.10" or less, focused primarily across Pete's Lake.
- WIND (20 FT):
 - Lookout: Valleys/Lwr Slopes: Downslope 3-5 mph through 1200, then NNE 5-9 mph. Ridges/Upper Slopes: NNE 3-7 mph through 1200 then NNE 6-10 mph with gusts 10-15 mph.
 - Petes Lake: N 3-7 mph through 1100, then NNE 8-12 mph with gusts 15-20 mph through 2000.
- MAX TEMPERATURES: 58-63 valleys and mid-slopes, 47-52 ridges and Pete's Lake.
- MIN RH:
 - Lookout: 40-50% Petes Lake: 50-60%
- INVERSION: Weak, mixed by 0900-1100. MID HAINES: 3.

THURSDAY NIGHT:

- WEATHER: Partly cloudy becoming mostly clear overnight.
- WIND (20 FT):
 - Lookout: Valleys/Lwr Slopes: Downslope 2-5 mph. Ridges/Upr Slopes: NNE 3-8 mph.
 - Petes Lake: NNE 4-9 mph.
- MIN TEMPERATURES: Lookout: 40-45. Petes Lake: 34-39.
- MAX RH:
 - Lookout: 90-100% Petes Lake: 80-90%

FRIDAY:

- WEATHER: Mostly sunny.
- WIND (20 FT):
 - Lookout: Valleys/Lwr Slopes: Downslope 3-5 mph through 1200, then upslope 4-8 mph. Ridges/Upper Slopes: NNE 3-7 mph through 1200 then W 5-9 mph. Occasional gusts to 14 mph along west-east oriented drainages after 1400.
 - Petes Lake: SE 3-5 mph through 1200, then W 5-10 mph with gusts to 15 mph through 2000.
- MAX TEMPERATURES: 67-72 valleys and mid-slopes, 56-62 ridges and Pete's Lake.
- MIN RH:
 - Lookout: 30-40% Petes Lake: 35-45%
- INVERSION: Weak, mixed by 0900-1100. MID HAINES: 4.

Extended outlook: Saturday through Tuesday: South to southwest winds increase Sat/Sun ahead of an incoming strong storm system. Chances for rain increase Sunday, with precipitation extremely likely Monday and Tuesday. Wetting rain looks to be a near-certainty, with increasing potential for heavy rain at times Monday and Tuesday. Cooling temperature trend expected through the extended outlook period.

Sunrise: 06:59 PDT Sunset: 19:14 PDT

FIRE BEHAVIOR FORECAST

FORECAST NUMBER: 40	TYPE OF FIRE: Wildfire
FIRE NAME: Lookout/Bedrock/Horse Creek/Pothole/Pete's Lake	OPERATIONAL PERIOD: 09/21/2023 (day/night)
DATE ISSUED: 09/20/2023	TIME ISSUED: 2000 Hours
UNIT: OR-WIF, Willamette National Forest	SIGNED: ANDREW TAYLOR <small>Digitally signed by ANDREW TAYLOR Date: 2023.09.20 18:23:12 -07'00'</small>

INPUTS

WEATHER SUMMARY: *Cooling and wetting weather pattern persisting through the week.*

FUELS:

Cool and wet weather conditions continue over the area, resulting in high daytime RH values, good overnight Humidity recoveries, and probabilities of precipitation that will contribute to dampen fire behavior on all fires. There is a chance of precipitation over all the fires again on Thursday with better chances of Pete's Lake. After a slight break on Friday and Saturday, continued storms move into the area bringing chances of widespread precipitation on Sunday, with increasing chances of wetting rains Monday and Tuesday.

OUTPUTS

FIRE BEHAVIOR GENERAL:

Moderate fire weather conditions are expected to continue through the week and even through the weekend. Dead and down fuel loading in timber will be the primary burnable fuels on any of the fires. The fires have been reliant on sunlight, hot temperatures and low RH values, which will not occur over the next several days. Primary activity will continue to be smoldering and creeping in duff and heavy down and dead fuels.



Based on Peak Wx and Fuels conditions:

- Fine Dead Fuel Moisture- 13% Petes Lake, 12% Lookout
- Probability of Ignition 10-20.
- Short range spotting through rollout and snagfall

FIRE BEHAVIOR SPECIFIC:

Pete's Lake Fire: Expect very little fire behavior due to cold temperatures and high daytime and overnight RH values. Primary fire activity will be in duff and dead and down heavy fuels. Growth of the fire is not expected other than by roll out on steep slopes, but conditions will limit spotting potential greatly.

Lookout Fire: Continued consumption of dead and down heavy fuels and smoldering of duff. Little to no spread other than through roll out. Low probability of spotting.

Bedrock, Pothole, and Horse Creek: Continued consumption and smoldering of interior pockets. No growth predicted.

IA – New starts will present low resistance to control with current weather conditions.

AIR OPERATIONS:

Consider the weather before ordering aircraft for any operational mission.

SAFETY

Be aware of where fire has burned recently and the hazards that can be present, such as stumpholes, rollers, and fire weakened trees.



Division/Group Assignment List (ICS 204 WF)
Controlled Unclassified Information//Basic

1. Incident Name:				3.			
BEDROCK LOOKOUT				Branch:		Division/Group	
2. Operational Period: DAY				BEDROCK		NORTH REPAIR	
Date/Time From: 09/21/2023 0700 THU		Date/Time To: 09/21/2023 2000 THU					
4. Operations Personnel							
FIELD OPS		TERRY WALTER DAN TRAPANESE (T)		BRANCH DIRECTOR		CHRIS LUNDGREN KEN FOSS (T)	
AIR ATTACK SUPERVISOR		JOE TONE		DIVISION/GROUP SUPERVISOR		WES WENTWORTH (LWD 9/27) MEG FLUHARTY (LWD 10/1) (T)	
5. Resources Assigned this Period							
Strike Team / Task Force / Resource Designator		LWD	Leader	Number Persons	Drop Off PT./Time	Pick Up PT./Time	
TFLD O-730		09/24	QUINLAN ANDERSON	1	LOOKOUT ICP/0700	LOOKOUT ICP/2000	
TFLD (T) O-596		09/26	KELLY SENSECQUA	1	LOOKOUT ICP/0700	LOOKOUT ICP/2000	
TFLD (T) O-731		09/24	SEQUOIA GJERDE	1	LOOKOUT ICP/0700	LOOKOUT ICP/2000	
TFLD O-910 (T)		10/01	CONNOR ALLEN	1	LOOKOUT ICP/0700	LOOKOUT ICP/2000	
HEQB O-721		09/25	KYLER KNAPP	1	LOOKOUT ICP/0700	LOOKOUT ICP/2000	
HEQB O-728		09/22	OLIVER BOSSERT	1	LOOKOUT ICP/0700	LOOKOUT ICP/2000	
HEQB O-732		09/27	JAIME MARISCAL	1	LOOKOUT ICP/0700	LOOKOUT ICP/2000	
HEQB O-812		10/01	JAYDEN CHYNOWETH	1	LOOKOUT ICP/0700	LOOKOUT ICP/2000	
HEQB (T) O-814		09/27	JOSH VIERRIA	1	LOOKOUT ICP/0700	LOOKOUT ICP/2000	
HEQB (T) O-872		10/03	BROCK HARMON	1	LOOKOUT ICP/0700	LOOKOUT ICP/2000	
HEQB (T) O-874		10/04	LOGAN PARSLEY	1	LOOKOUT ICP/0700	LOOKOUT ICP/2000	
HEQB (T) O-908		10/04	MARTHA DUDDLES	1	LOOKOUT ICP/0700	LOOKOUT ICP/2000	
HC2 C-81 1ST CHOICE CONTRACTING (BDRK)		09/29	ENRIQUE MANZO	20	LOOKOUT ICP/0700	LOOKOUT ICP/2000	
HC2 C-103 FRANCO REFORESTATION C-1		10/01	ARMANDO CASTRO	20	LOOKOUT ICP/0700	LOOKOUT ICP/2000	
ENG6 E-662 FIRST STRIKE ENVIRONMENTAL		10/01	SPENCER BERLIER	3	LOOKOUT ICP/0700	LOOKOUT ICP/2000	
ENG4 E-665 FIREMOG		10/01	MIKE PARENT	3	LOOKOUT ICP/0700	LOOKOUT ICP/2000	
EXC1 E-545 EERA - BFC LIMITED		09/29	NEIL FARTHING	2	LOOKOUT ICP/0700	LOOKOUT ICP/2000	
EXC2 E-227 DEAN INNOVATIONS		10/07	SCOTT SIMMONS	2	LOOKOUT ICP/0700	LOOKOUT ICP/2000	
EXC2 E-468 4-Q TIMBER		10/01	ANTHONY BALDWIN	2	LOOKOUT ICP/0700	LOOKOUT ICP/2000	
EXC2 E-510 OUTBACK WILDFIRE		09/24	DAVE ELLIS	2	LOOKOUT ICP/0700	LOOKOUT ICP/2000	
8. Division/Group Communication Summary							
Function	Channel	RX Frequency N/W	RX Tone/NAC	TX Frequency N/W	TX Tone/NAC	Mode	
TACTICAL	SEE COM PLAN						
COMMAND	SEE COM PLAN						
9. Prepared By (Resource Unit Leader)			Approved By (Planning Section Chief)		Date	Time	
NICOLE LAGIOIA			MONICA RAMIREZ		09/20/2023	2000	

Division/Group Assignment List (ICS 204 WF)
Controlled Unclassified Information//Basic

1. Incident Name:			3.			
BEDROCK LOOKOUT			Branch:		Division/Group	
2. Operational Period: DAY			BEDROCK		NORTH REPAIR	
Date/Time From: 09/21/2023 0700 THU	Date/Time To: 09/21/2023 2000 THU					
4. Operations Personnel						
FIELD OPS		TERRY WALTER DAN TRAPANESE (T)		BRANCH DIRECTOR		CHRIS LUNDGREN KEN FOSS (T)
AIR ATTACK SUPERVISOR		JOE TONE		DIVISION/GROUP SUPERVISOR		WES WENTWORTH (LWD 9/27) MEG FLUHARTY (LWD 10/1) (T)
5. Resources Assigned this Period						
Strike Team / Task Force / Resource Designator		LWD	Leader	Number Persons	Drop Off PT./Time	Pick Up PT./Time
CHP1 E-531 TOP NOTCH		10/02	KYLE ARMIJO	2	LOOKOUT ICP/0700	LOOKOUT ICP/2000
CHP1 E-543 BFC LIMITED		09/29	JOSE SERANO	2	LOOKOUT ICP/0700	LOOKOUT ICP/2000
CHP1 E-544 AXSUS ENTERPRISES		09/29	SKYLAR WILSON	2	LOOKOUT ICP/0700	LOOKOUT ICP/2000
CHP2 E-481 BIG BARK CHIPPER (BDRK)		09/21	JACKIE LANGE	3	LOOKOUT ICP/0700	LOOKOUT ICP/2000
CHP2 E-505 SAYLOR CONSTRUCTION (BDRK)		09/24	CALEB FINK	3	LOOKOUT ICP/0700	LOOKOUT ICP/2000
CHSL E-532 EERA - BFC LIMITED		09/25	FORTINO LARIOS	2	LOOKOUT ICP/0700	LOOKOUT ICP/2000
WTS2 E-370 LEE ROY BELLOIR & SONS (BDRK)		09/24	ROGER BELLIOR	1	LOOKOUT ICP/0700	LOOKOUT ICP/2000
FRNT E-656 EERA - ROSE LOGGING		09/30	ROB MCCOLLOUGH	2	LOOKOUT ICP/0700	LOOKOUT ICP/2000
DUMP E-652 EERA - MARK JONES TRUCKING		10/01	JERRY WOLFORD	2	LOOKOUT ICP/0700	LOOKOUT ICP/2000
DUMP E-653 EERA - MARK JONES TRUCKING		10/01	BUDDY CLEGG	1	LOOKOUT ICP/0700	LOOKOUT ICP/2000
LOGP E-333 AXSUS		10/01	SKYLER WILSON	2	LOOKOUT ICP/0700	LOOKOUT ICP/2000
LOGP E-334 AXSUS		10/01	JOSE SERANO	2	LOOKOUT ICP/0700	LOOKOUT ICP/2000
LOGL E-512 BRINK BROTHERS (BDRK)		09/25	JASON LEWIS	2	LOOKOUT ICP/0700	LOOKOUT ICP/2000
LOGT E-526 MARK JONES #1		09/30	RON ELLIOTT	1	LOOKOUT ICP/0700	LOOKOUT ICP/2000
TUBG E-542 BRINK BROTHERS		09/27	ROBERT BRINK	2	LOOKOUT ICP/0700	LOOKOUT ICP/2000
SOFR O-830		10/03	LUCAS DIXON	1	LOOKOUT ICP/0700	LOOKOUT ICP/2000
E-277 AMBO 15		09/26	LUCY CUMMINS	2	LOOKOUT ICP/0700	LOOKOUT ICP/2000
O-423 REMS 43		09/23	KAMRON GREER	4	LOOKOUT ICP/0700	LOOKOUT ICP/2000
O-424 MEDIC TEAM 38		09/22	BRANTON THOMPSON	2	LOOKOUT ICP/0700	LOOKOUT ICP/2000
REAF O-696		09/24	DONALD YOUKEY	1	LOOKOUT ICP/0700	LOOKOUT ICP/2000
REAF O-805		10/02	ELLIOTT WHARTON	1	LOOKOUT ICP/0700	LOOKOUT ICP/2000
8. Division/Group Communication Summary						
Function	Channel	RX Frequency N/W	RX Tone/NAC	TX Frequency N/W	TX Tone/NAC	Mode
TACTICAL	SEE COM PLAN					
COMMAND	SEE COM PLAN					
9. Prepared By (Resource Unit Leader)			Approved By (Planning Section Chief)		Date	Time
NICOLE LAGIOIA			MONICA RAMIREZ		09/20/2023	2000

Division/Group Assignment List (ICS 204 WF)
Controlled Unclassified Information//Basic

1. Incident Name:		3.				
BEDROCK LOOKOUT		Branch:		Division/Group		
2. Operational Period: DAY		BEDROCK		NORTH REPAIR		
Date/Time From: 09/21/2023 0700 THU	Date/Time To: 09/21/2023 2000 THU					
4. Operations Personnel						
FIELD OPS	TERRY WALTER DAN TRAPANESE (T)	BRANCH DIRECTOR		CHRIS LUNDGREN KEN FOSS (T)		
AIR ATTACK SUPERVISOR	JOE TONE	DIVISION/GROUP SUPERVISOR		WES WENTWORTH (LWD 9/27) MEG FLUHARTY (LWD 10/1) (T)		
5. Resources Assigned this Period						
Strike Team / Task Force / Resource Designator	LWD	Leader	Number Persons	Drop Off PT./Time	Pick Up PT./Time	
REAF O-818	10/04	BRANDYN CHILD	1	LOOKOUT ICP/0700	LOOKOUT ICP/2000	
6. Control Operations/Work Assignments:						
<p><u>Task:</u> Continue with log hauling operations along the 18 and spur roads. Repair dozerline utilizing excavators from DP-122 to DP-208. Utilize hand crew to repair existing hand lines. Continue chipping operations throughout the Division. Utilize engines to patrol fire perimeter and address smoke and areas of heat as necessary.</p> <p><u>Purpose:</u> Aid in the completion of repair efforts to areas disturbed by wildfire suppression.</p> <p><u>End State:</u> Complete fire suppression repair activities north and west of DP123 and north and east of DP205. Follow actions outlined in the suppression repair plan.</p>						
7. Special Instructions:						
<p>BAER team members will be working in Divisions North Repair and South Repair. BAER team will notify DIVS when working in North or South Repair.</p> <p>FOBS working in North and South Repair.</p> <p>Needs: HEQB x 2; TFLD x 2; CHP1 x 1</p>						
8. Division/Group Communication Summary						
Function	Channel	RX Frequency N/W	RX Tone/NAC	TX Frequency N/W	TX Tone/NAC	Mode
TACTICAL	SEE COM PLAN					
COMMAND	SEE COM PLAN					
9. Prepared By (Resource Unit Leader)		Approved By (Planning Section Chief)		Date	Time	
NICOLE LAGIOIA		MONICA RAMIREZ		09/20/2023	2000	

Division/Group Assignment List (ICS 204 WF)
Controlled Unclassified Information//Basic

1. Incident Name:			3.			
BEDROCK LOOKOUT			Branch:		Division/Group	
2. Operational Period: DAY			BEDROCK		SOUTH REPAIR	
Date/Time From: 09/21/2023 0700 THU	Date/Time To: 09/21/2023 2000 THU					
4. Operations Personnel						
FIELD OPS	TERRY WALTER DAN TRAPANESI (T)		BRANCH DIRECTOR		CHRIS LUNDGREN KEN FOSS (T)	
AIR ATTACK SUPERVISOR	JOE TONE		DIVISION/GROUP SUPERVISOR		TED PIEHL (LWD 9/27) SHANE ORSER (LWD 9/28) (T)	
5. Resources Assigned this Period						
Strike Team / Task Force / Resource Designator	LWD	Leader	Number Persons	Drop Off PT./Time	Pick Up PT./Time	
TFLD (T) O-911	09/26	DANIEL NORSEKOG	1	LOOKOUT ICP/0700	LOOKOUT ICP/2000	
HEQB O-732	09/28	BRIAN JOHNSON	1	LOOKOUT ICP/0700	LOOKOUT ICP/2000	
HEQB O-838	09/24	BRYAN VESCE	1	LOOKOUT ICP/0700	LOOKOUT ICP/2000	
HEQB (T) O-742	09/28	DEREK DOMIS	1	LOOKOUT ICP/0700	LOOKOUT ICP/2000	
HEQB (T) O-839	09/23	DANA MASTROIANNI	1	LOOKOUT ICP/0700	LOOKOUT ICP/2000	
FELB O-738	09/27	CHRISTOPHER WENNOGLE	1	LOOKOUT ICP/0700	LOOKOUT ICP/2000	
FMOD O-722 CUT RITE INC - DULE 6	09/21	JOHN MULLENIX	2	LOOKOUT ICP/0700	LOOKOUT ICP/2000	
FMOD O-795 HANDCCUTTING	09/29	CORY KEFFER	2	LOOKOUT ICP/0700	LOOKOUT ICP/2000	
FMOD O-862 TOMS TIMBER	10/03	TRAVIS LOCKWOOD	2	LOOKOUT ICP/0700	LOOKOUT ICP/2000	
HC2 C-100 MR CONTRACTING C-2	09/30	MANUEL JIMENEZ	20	LOOKOUT ICP/0700	LOOKOUT ICP/2000	
HC2 C-101 MR CONTRACTING C-1	09/30	TOMAS GUZMAN GARCIA	20	LOOKOUT ICP/0700	LOOKOUT ICP/2000	
HC2 C-104 WILLAMETTE VALLEY REFOR. C-7	10/02	JAVIER GUZMAN	20	LOOKOUT ICP/0700	LOOKOUT ICP/2000	
ENG4 E-1 J3 CONTRACTING (BDRK)	09/21	DAN TEGART	3	LOOKOUT ICP/0700	LOOKOUT ICP/2000	
*ENG4 E-268 AAA THUNDERBOLT	09/25	MONTIE REYNOLDS	3	LOOKOUT ICP/0700	LOOKOUT ICP/2000	
ENG4 E-664 FIREMOG	10/02	JACE HOFFMAN	3	LOOKOUT ICP/0700	LOOKOUT ICP/2000	
ENG4 E-666 TORRES CONTRACTING	10/02	JUAN TORRES	3	LOOKOUT ICP/0700	LOOKOUT ICP/2000	
EXC1 E-546 EERA - AXSUS ENTERPRISES	10/07	CARL MATHENY	2	LOOKOUT ICP/0700	LOOKOUT ICP/2000	
EXC2 E-654 EARNEST HEATHER	10/01	MITCH GRIFFITH	2	LOOKOUT ICP/0700	LOOKOUT ICP/2000	
EXC2 E-655 ZEB'S TREE SERVICE	10/01	CAMERON HOMES	2	LOOKOUT ICP/0700	LOOKOUT ICP/2000	
SKD1 E-299 MARK JONES	09/27	CASEY HUNTLEY	2	LOOKOUT ICP/0700	LOOKOUT ICP/2000	
8. Division/Group Communication Summary						
Function	Channel	RX Frequency N/W	RX Tone/NAC	TX Frequency N/W	TX Tone/NAC	Mode
TACTICAL	SEE COM PLAN					
COMMAND	SEE COM PLAN					
9. Prepared By (Resource Unit Leader)		Approved By (Planning Section Chief)		Date	Time	
NICOLE LAGIOIA		MONICA RAMIREZ		09/20/2023	2000	

Division/Group Assignment List (ICS 204 WF)
Controlled Unclassified Information//Basic

1. Incident Name:			3.			
BEDROCK LOOKOUT			Branch:		Division/Group	
2. Operational Period: DAY			BEDROCK		SOUTH REPAIR	
Date/Time From: 09/21/2023 0700 THU	Date/Time To: 09/21/2023 2000 THU					
4. Operations Personnel						
FIELD OPS		TERRY WALTER DAN TRAPANESE (T)		BRANCH DIRECTOR	CHRIS LUNDGREN KEN FOSS (T)	
AIR ATTACK SUPERVISOR		JOE TONE		DIVISION/GROUP SUPERVISOR	TED PIEHL (LWD 9/27) SHANE ORSER (LWD 9/28) (T)	
5. Resources Assigned this Period						
Strike Team / Task Force / Resource Designator		LWD	Leader	Number Persons	Drop Off PT./Time	Pick Up PT./Time
WTS2 E-323 THOMAS H. IRELAND (BDRK)		09/24	RYAN CHANDLER	1	LOOKOUT ICP/0700	LOOKOUT ICP/2000
SOFR O-830		10/03	LUCAS DIXON	1	LOOKOUT ICP/0700	LOOKOUT ICP/2000
E-14 AMBO 10 (BDRK)		09/28	ANDRE MARTONI	2	LOOKOUT ICP/0700	LOOKOUT ICP/2000
O-554 EMT 119		09/24	NADIA JENMAN	1	LOOKOUT ICP/0700	LOOKOUT ICP/2000
REAF O-727		09/22	NOAH HEIDENREICH	1	LOOKOUT ICP/0700	LOOKOUT ICP/2000
REAF O-725		09/24	OLIVIA GUTHRIE	1	LOOKOUT ICP/0700	LOOKOUT ICP/2000
REAF O-726		09/22	SHANNON MCCOY	1	LOOKOUT ICP/0700	LOOKOUT ICP/2000
ARCH O-807		10/01	JENNIFER HERNANDEZ	1	LOOKOUT ICP/0700	LOOKOUT ICP/2000
REAF O-818		10/04	BRANDYN CHILD	1	LOOKOUT ICP/0700	LOOKOUT ICP/2000
6. Control Operations/Work Assignments:						
<p><u>Task:</u> Utilize crews to mop up, continue dozer/handline repair and backhaul of unneeded equipment. Utilize heavy equipment to continue with dozer line and drainage repair. Utilize engines to patrol fire perimeter and address smoke and areas of heat as necessary.</p> <p><u>Purpose:</u> Restore lands impacted by wildfire and suppression tactics.</p> <p><u>End State:</u> Lands restored.</p>						
7. Special Instructions:						
<p>*Denotes resources for Initial Attack (IA) FOBS working in North and South Repair. BAER team members will be working in Divisions North Repair and South Repair. BAER team will notify DIVS when working in North or South Repair.</p> <p>Needs: TFLD x 2</p>						
8. Division/Group Communication Summary						
Function	Channel	RX Frequency N/W	RX Tone/NAC	TX Frequency N/W	TX Tone/NAC	Mode
TACTICAL	SEE COM PLAN					
COMMAND	SEE COM PLAN					
9. Prepared By (Resource Unit Leader)			Approved By (Planning Section Chief)		Date	Time
NICOLE LAGIOIA			MONICA RAMIREZ		09/20/2023	2000

Division/Group Assignment List (ICS 204 WF)
Controlled Unclassified Information//Basic

1. Incident Name:			3.			
BEDROCK LOOKOUT			Branch:		Division/Group	
2. Operational Period: DAY			I		A / C	
Date/Time From: 09/21/2023 0700 THU	Date/Time To: 09/21/2023 2000 THU					
4. Operations Personnel						
FIELD OPS		TERRY WALTER DAN TRAPANESE (T)		BRANCH DIRECTOR		SAM TACCHINI JOSH VERELLEN (T)
AIR ATTACK SUPERVISOR		JOE TONE		DIVISION/GROUP SUPERVISOR		ERIC KIEHN (LWD 10/2) NATHAN BASFORD (LWD 9/25) (T)
5. Resources Assigned this Period						
Strike Team / Task Force / Resource Designator		LWD	Leader	Number Persons	Drop Off PT./Time	Pick Up PT./Time
TFLD (T) O-869		10/04	MATTHEW BACA	1	LOOKOUT ICP/0700	LOOKOUT ICP/2000
HEQB (T) O-871		10/03	CHASE SMITH	1	LOOKOUT ICP/0700	LOOKOUT ICP/2000
FELB (T) O-875		10/04	ORION ADAMO	1	LOOKOUT ICP/0700	LOOKOUT ICP/2000
FMOD O-794 FALLER MODULE		09/29	CHRIS REED	2	LOOKOUT ICP/0700	LOOKOUT ICP/2000
HC2 C-102 FRANCO REFORESTATION C-2		10/01	FRANCIS LEE FRANCO	20	LOOKOUT ICP/0700	LOOKOUT ICP/2000
ENG3 E-301 HEK JONES		09/25	DANIEL SULLIVAN	3	LOOKOUT ICP/0700	LOOKOUT ICP/2000
ENG3 E-524 WILDLAND SUPRT TM		09/29	MIKE JARAMILLO	3	LOOKOUT ICP/0700	LOOKOUT ICP/2000
ENG4 E-633 NVEKD E1444		09/26	BLAKE JONES	4	LOOKOUT ICP/0700	LOOKOUT ICP/2000
ENG4 E-680 NORTH PACIFIC FORESTRY		10/03	TYLER PAYNE	3	LOOKOUT ICP/0700	LOOKOUT ICP/2000
FEL1 E-100 BOULDER RIDGE		10/11	SHANE MURPHY	2	LOOKOUT ICP/0700	LOOKOUT ICP/2000
FEL1 E-238 TJ'S MECHANICAL CUTTING		09/29	AUSTIN SEEKERS	2	LOOKOUT ICP/0700	LOOKOUT ICP/2000
FEL1 E-272 TJ'S MECHANICAL CUTTING		09/21	DALE SHOEMAKER	2	LOOKOUT ICP/0700	LOOKOUT ICP/2000
FEL2 E-173 WYEAST FORESTRY (BDRK)		09/26	SETH BIERBOWER	2	LOOKOUT ICP/0700	LOOKOUT ICP/2000
SKD1 E-671 MKS LOGISTICS		10/01	SHANE HUFFMAN	2	LOOKOUT ICP/0700	LOOKOUT ICP/2000
SKD1 E-672 T2		10/02	JAKE WILLE	2	LOOKOUT ICP/0700	LOOKOUT ICP/2000
EXC2 E-541 VALLEY TIMBER		09/25	NELSON TREAVOR	2	LOOKOUT ICP/0700	LOOKOUT ICP/2000
EXC2 E-681 PARKHURST EXCAVATION		09/24	BLAKE ROBB	2	LOOKOUT ICP/0700	LOOKOUT ICP/2000
LOGL E-675 EERA - BRINK BROTHERS		10/02	JASON LARSON	2	LOOKOUT ICP/0700	LOOKOUT ICP/2000
LOGT E-509 MARK JONES TRUCKING (BDRK)		09/22	TREVOR TRIMBLE	1	LOOKOUT ICP/0700	LOOKOUT ICP/2000
LOGT E-527 MARK JONES TRUCKING 2		09/30	TERRY LEWIS	1	LOOKOUT ICP/0700	LOOKOUT ICP/2000
8. Division/Group Communication Summary						
Function	Channel	RX Frequency N/W	RX Tone/NAC	TX Frequency N/W	TX Tone/NAC	Mode
TACTICAL	SEE COM PLAN					
COMMAND	SEE COM PLAN					
9. Prepared By (Resource Unit Leader)			Approved By (Planning Section Chief)		Date	Time
NICOLE LAGIOIA			MONICA RAMIREZ		09/20/2023	2000

Division/Group Assignment List (ICS 204 WF)
Controlled Unclassified Information//Basic

1. Incident Name:			3.			
BEDROCK LOOKOUT			Branch:		Division/Group	
2. Operational Period: DAY			I		A / C	
Date/Time From: 09/21/2023 0700 THU	Date/Time To: 09/21/2023 2000 THU					
4. Operations Personnel						
FIELD OPS	TERRY WALTER DAN TRAPANESE (T)		BRANCH DIRECTOR	SAM TACCHINI JOSH VERELLEN (T)		
AIR ATTACK SUPERVISOR	JOE TONE		DIVISION/GROUP SUPERVISOR	ERIC KIEHN (LWD 10/2) NATHAN BASFORD (LWD 9/25) (T)		
5. Resources Assigned this Period						
Strike Team / Task Force / Resource Designator	LWD	Leader	Number Persons	Drop Off PT./Time	Pick Up PT./Time	
SOFR O-715.99	09/30	RYDER JONES	1	LOOKOUT ICP/0700	LOOKOUT ICP/2000	
SOFR (T) O-720	09/24	PATRICK ROMPORTL	1	LOOKOUT ICP/0700	LOOKOUT ICP/2000	
E-433 AMBO 308	09/24	ALI HAMMOUDEH	2	LOOKOUT ICP/0700	LOOKOUT ICP/2000	
O-682 EMT 122	09/23	ETHAN JARRETT	1	LOOKOUT ICP/0700	LOOKOUT ICP/2000	
O-676 MEDIC 222	09/23	RITVIK CHAKRABORTY	1	LOOKOUT ICP/0700	LOOKOUT ICP/2000	
REAF O-475	09/21	CAYLA KENNEDY	1	LOOKOUT ICP/0700	LOOKOUT ICP/2000	
REAF O-693	09/23	MARK LEIS	1	LOOKOUT ICP/0700	LOOKOUT ICP/2000	
REAF O-947		EMMA VANCE	1	LOOKOUT ICP/0700	LOOKOUT ICP/2000	
REAF O-948		ANGELICA KNEISLY	1	LOOKOUT ICP/0700	LOOKOUT ICP/2000	
6. Control Operations/Work Assignments:						
<u>Task:</u> Continue log processing and repair work as appropriate. Backhaul unnecessary equipment and supplies. Monitor fire progression.						
<u>Purpose:</u> Continue completion of repair efforts. Keep fire east of 15 Road.						
<u>End State:</u> Minimize impacts to Hwy 126 corridor. Minimize impacts to HJ Andrews, other infrastructure, and natural resources. Complete suppression repair activities.						
7. Special Instructions:						
Needs: HEQB x 1; LOGL (tracked) x 1; ENG6 x1; TFLD x 1; FORW x 1						
8. Division/Group Communication Summary						
Function	Channel	RX Frequency N/W	RX Tone/NAC	TX Frequency N/W	TX Tone/NAC	Mode
TACTICAL	SEE COM PLAN					
COMMAND	SEE COM PLAN					
9. Prepared By (Resource Unit Leader)		Approved By (Planning Section Chief)		Date	Time	
NICOLE LAGIOIA		MONICA RAMIREZ		09/20/2023	2000	

Division/Group Assignment List (ICS 204 WF)
Controlled Unclassified Information//Basic

1. Incident Name:			3.			
BEDROCK LOOKOUT			Branch:		Division/Group	
2. Operational Period: DAY			I		H	
Date/Time From: 09/21/2023 0700 THU	Date/Time To: 09/21/2023 2000 THU					
4. Operations Personnel						
FIELD OPS		TERRY WALTER DAN TRAPANESE (T)		BRANCH DIRECTOR SAM TACCHINI JOSH VERELLEN (T)		
AIR ATTACK SUPERVISOR		JOE TONE		DIVISION/GROUP SUPERVISOR MESSENGER (LWD 9/21) / BROWN MIKE STARR (LWD 9/21) (T)		
5. Resources Assigned this Period						
Strike Team / Task Force / Resource Designator	LWD	Leader	Number Persons	Drop Off PT./Time	Pick Up PT./Time	
TFLD O-700	09/25	KEITH CRAIN	1	LOOKOUT ICP/0700	LOOKOUT ICP/2000	
TFLD (T) O-699	09/23	JOSUE GONZALEZ	1	LOOKOUT ICP/0700	LOOKOUT ICP/2000	
HEQB O-744	09/26	ADAM HUMBACH	1	LOOKOUT ICP/0700	LOOKOUT ICP/2000	
FELB (T) O-876	10/03	BRADY GLAUTHIER	1	LOOKOUT ICP/0700	LOOKOUT ICP/2000	
FELB (T) O-877	10/03	FORREST CLARK	1	LOOKOUT ICP/0700	LOOKOUT ICP/2000	
FMOD O-706 TIMBER TIPPER	09/23	GABE REDDEKOPP	2	LOOKOUT ICP/0700	LOOKOUT ICP/2000	
FMOD O-837 TOMS TIMBER	10/02	STEVEN JOSH	2	LOOKOUT ICP/0700	LOOKOUT ICP/2000	
FMOD O-861 WEST COAST CUTTING	10/02	BALDO MACIEL	2	LOOKOUT ICP/0700	LOOKOUT ICP/2000	
HC2 C-99 BIG BARK CHIPPERS #2	10/01	CHESTER FULBRIGHT	20	LOOKOUT ICP/0700	LOOKOUT ICP/2000	
HC2 C-106 TOM FERY FARM C-1	10/03	SERAFIN GARCIA	20	LOOKOUT ICP/0700	LOOKOUT ICP/2000	
ENG6 E-660 FIRST STRIKE	10/01	ZANDER HAMILTON	3	LOOKOUT ICP/0700	LOOKOUT ICP/2000	
ENG6 E-682 OR-DEF - 652	10/03	BRANDON R BROWN	6	LOOKOUT ICP/0700	LOOKOUT ICP/2000	
SKD1 E-25 RUSSELL	09/25	MARSHAL MECHAM	2	LOOKOUT ICP/0700	LOOKOUT ICP/2000	
SKG2 E-181 ZEB'S TREE SERVICE (BDRK)	09/22	DARRYL KUEHL	2	LOOKOUT ICP/0700	LOOKOUT ICP/2000	
FEL1 E-648 BFC LIMITED	09/28	SHERI ROTH	2	LOOKOUT ICP/0700	LOOKOUT ICP/2000	
CHP1 E-335 AXSUS	09/27	MIKE FOWLER	2	LOOKOUT ICP/0700	LOOKOUT ICP/2000	
CHP1 E-536 AXSUS ENTERPRISES	10/02	DAVID BERGQUIST	2	LOOKOUT ICP/0700	LOOKOUT ICP/2000	
WTS2 E-667 TIMBER TIPPER ENT	10/02	CHAD ASHBAUGH	1	LOOKOUT ICP/0700	LOOKOUT ICP/2000	
WTS2 E-668 COASTAL RANGE FIRE	10/02	SEAN BOEHLJE	1	LOOKOUT ICP/0700	LOOKOUT ICP/2000	
8. Division/Group Communication Summary						
Function	Channel	RX Frequency N/W	RX Tone/NAC	TX Frequency N/W	TX Tone/NAC	Mode
TACTICAL	SEE COM PLAN					
COMMAND	SEE COM PLAN					
9. Prepared By (Resource Unit Leader)		Approved By (Planning Section Chief)		Date	Time	
NICOLE LAGIOIA		MONICA RAMIREZ		09/20/2023	2000	

Division/Group Assignment List (ICS 204 WF)
Controlled Unclassified Information//Basic

1. Incident Name:			3.			
BEDROCK LOOKOUT			Branch:		Division/Group	
2. Operational Period: DAY			I		H	
Date/Time From: 09/21/2023 0700 THU	Date/Time To: 09/21/2023 2000 THU					
4. Operations Personnel						
FIELD OPS		TERRY WALTER DAN TRAPANESE (T)		BRANCH DIRECTOR		SAM TACCHINI JOSH VERELLEN (T)
AIR ATTACK SUPERVISOR		JOE TONE		DIVISION/GROUP SUPERVISOR		MESSENGER (LWD 9/21) / BROWN MIKE STARR (LWD 9/21) (T)
5. Resources Assigned this Period						
Strike Team / Task Force / Resource Designator		LWD	Leader	Number Persons	Drop Off PT./Time	Pick Up PT./Time
SOFR O-715.99		09/30	RYDER JONES	1	LOOKOUT ICP/0700	LOOKOUT ICP/2000
SOFR(T) O-720		09/24	PATRICK ROMPORTL	1	LOOKOUT ICP/0700	LOOKOUT ICP/2000
E-36 FIRELINE (AMBO 303)		09/21	KYLE MEAD	2	LOOKOUT ICP/0700	LOOKOUT ICP/2000
O-762 MEDIC 228		09/27	KYLE KEMERER	1	LOOKOUT ICP/0700	LOOKOUT ICP/2000
O-789 MEDIC 229		09/28	NATHAN DAVIS	1	LOOKOUT ICP/0700	LOOKOUT ICP/2000
O-233 RAT6		09/21	MIKE PLANETA	2	LOOKOUT ICP/0700	LOOKOUT ICP/2000
REAF O-693		09/23	MARK LEIS	1	LOOKOUT ICP/0700	LOOKOUT ICP/2000
REAF O-904			PATRICK CATALANO	1	LOOKOUT ICP/0700	LOOKOUT ICP/2000
REAF O-905			BENJAMIN HATHAWAY	1	LOOKOUT ICP/0700	LOOKOUT ICP/2000
6. Control Operations/Work Assignments:						
<u>Task:</u> Continue log processing and repair work as appropriate. Backhaul unnecessary equipment and supplies. Monitor fire progression.						
<u>Purpose:</u> Continue completion of repair efforts. Keep fire south of the 1508 Road.						
<u>End State:</u> Minimize impacts to HJ Andrews, other infrastructure, and natural resources. Complete suppression repair activities.						
7. Special Instructions:						
Limit traffic on 1506 Rd. No traffic allowed past DP12 on the 1506 Rd. Limit traffic on the 1508 Rd. Coordinate activities with HJ Andrews Staff.						
Needs: FELB x 2						
8. Division/Group Communication Summary						
Function	Channel	RX Frequency N/W	RX Tone/NAC	TX Frequency N/W	TX Tone/NAC	Mode
TACTICAL	SEE COM PLAN					
COMMAND	SEE COM PLAN					
9. Prepared By (Resource Unit Leader)			Approved By (Planning Section Chief)		Date	Time
NICOLE LAGIOIA			MONICA RAMIREZ		09/20/2023	2000

Division/Group Assignment List (ICS 204 WF)
Controlled Unclassified Information//Basic

1. Incident Name:			3.			
BEDROCK LOOKOUT			Branch:		Division/Group	
2. Operational Period: DAY			I		L	
Date/Time From: 09/21/2023 0700 THU		Date/Time To: 09/21/2023 2000 THU				
4. Operations Personnel						
FIELD OPS		TERRY WALTER DAN TRAPANESE (T)		BRANCH DIRECTOR		
AIR ATTACK SUPERVISOR		JOE TONE		DIVISION/GROUP SUPERVISOR		
				SAM TACCHINI JOSH VERELLEN (T)		
				DAREK PEPPE (LWD 9/27) COLBEY RICHMOND (LWD 9/25) (T)		
5. Resources Assigned this Period						
Strike Team / Task Force / Resource Designator		LWD	Leader	Number Persons	Drop Off PT./Time	Pick Up PT./Time
TFLD (T) O-873		10/04	KODI LESLIE	1	HOODOO FOB/0700	HOODOO FOB/2000
TFLD (T) O-906		10/03	CHRISTOPHER	1	HOODOO FOB/0700	HOODOO FOB/2000
HEQB (T) O-870		10/03	TRAVIS POLLARD	1	HOODOO FOB/0700	HOODOO FOB/2000
FMOD O-709		09/23	STEVEN HAYTER	2	HOODOO FOB/0700	HOODOO FOB/2000
IHC C-97 ROOSEVELT IHC		09/27	LARRY MONEY	20	HOODOO FOB/0700	HOODOO FOB/2000
HC2IA C-95 BIG STATE WILDFIRE NCC 14D		09/24	MEKIAH STANSEL	20	HOODOO FOB/0700	HOODOO FOB/2000
ENG3 E-625 UTUWF E321		09/24	KARL DELANGE	8	HOODOO FOB/0700	HOODOO FOB/2000
ENG4 E-631 - OR-MHF - 421		09/25	MICHAEL L WHITAKER	4	HOODOO FOB/0700	HOODOO FOB/2000
ENG6 E-506 TRI-STATE FIRE (BDRK)		09/29	STANLEY SMITH	3	HOODOO FOB/0700	HOODOO FOB/2000
ENG6 E-683 OR-DEF - 636		10/03	KREG JACKSON	6	HOODOO FOB/0700	HOODOO FOB/2000
DZR2 E-26 GRIFFITH		09/25	MATT JAEGER	2	HOODOO FOB/0700	HOODOO FOB/2000
CHP1 E-189 BRINK BROTHERS		09/25	FRENTON EDWARDS	3	HOODOO FOB/0700	HOODOO FOB/2000
CHP1 E-555 MILLER TIMBER		09/29	TIM JONES	2	HOODOO FOB/0700	HOODOO FOB/2000
CHP2 E-512 MARTY'S TREE SERVICE		09/21	JOSEPH ONEILL	3	HOODOO FOB/0700	HOODOO FOB/2000
CHP2 E-620 DIAMOND ROAD MAINTENANCE		09/24	LAMAR MELTIN	3	HOODOO FOB/0700	HOODOO FOB/2000
FORW E-343 MILLER		09/25	SCOTT KELLOGG	1	HOODOO FOB/0700	HOODOO FOB/2000
FORW E-595 MILLER TIMBER SERVICES		09/21	SCOTT MCELHANEY	2	HOODOO FOB/0700	HOODOO FOB/2000
WTS2 E-183 STAN HARLAN		09/30	ZANE WILSON	1	HOODOO FOB/0700	HOODOO FOB/2000
WTS2 E-184 BEAR CREEK		09/28	JAY KRIDER	1	HOODOO FOB/0700	HOODOO FOB/2000
8. Division/Group Communication Summary						
Function	Channel	RX Frequency N/W	RX Tone/NAC	TX Frequency N/W	TX Tone/NAC	Mode
TACTICAL	SEE COM PLAN					
COMMAND	SEE COM PLAN					
9. Prepared By (Resource Unit Leader)			Approved By (Planning Section Chief)		Date	Time
NICOLE LAGIOIA			MONICA RAMIREZ		09/20/2023	2000

Division/Group Assignment List (ICS 204 WF)
Controlled Unclassified Information//Basic

1. Incident Name:			3.			
BEDROCK LOOKOUT			Branch:		Division/Group	
2. Operational Period: DAY			I		L	
Date/Time From: 09/21/2023 0700 THU	Date/Time To: 09/21/2023 2000 THU					
4. Operations Personnel						
FIELD OPS		TERRY WALTER DAN TRAPANESE (T)		BRANCH DIRECTOR		SAM TACCHINI JOSH VERELLEN (T)
AIR ATTACK SUPERVISOR		JOE TONE		DIVISION/GROUP SUPERVISOR		DAREK PEPPE (LWD 9/27) COLBEY RICHMOND (LWD 9/25) (T)
5. Resources Assigned this Period						
Strike Team / Task Force / Resource Designator		LWD	Leader	Number Persons	Drop Off PT./Time	Pick Up PT./Time
WTS2 E-268 PARAGON WATER TENDERS		09/22	JOSH MICHELI	1	HOODOO FOB/0700	HOODOO FOB/2000
WTS2 E-288 HUGHES, PATRICK		09/26	GARY HUGHES	1	HOODOO FOB/0700	HOODOO FOB/2000
SOFR O-715.99		09/30	RYDER JONES	1	HOODOO FOB/0700	HOODOO FOB/2000
E-3 AMBO 301		10/03	ALEXIS WASDEN	2	HOODOO FOB/0700	HOODOO FOB/2000
O-677 MEDIC 221		09/22	JACOB SMITH	1	HOODOO FOB/0700	HOODOO FOB/2000
O-727 MEDIC 226		09/26	STEVE MCDOWELL	1	HOODOO FOB/0700	HOODOO FOB/2000
O-234 H.A.R.T. (RAT 7)		09/21	RAUL RUIZ	2	HOODOO FOB/0700	HOODOO FOB/2000
O-675 EMT 108		09/23	STEPHAN BLASKOVICS	1	HOODOO FOB/0700	HOODOO FOB/2000
REAF O-693		09/23	MARK LEIS	1	HOODOO FOB/0700	HOODOO FOB/2000
REAF O-896		10/04	ASHLEY DI LEONARDI	1	HOODOO FOB/0700	HOODOO FOB/2000
6. Control Operations/Work Assignments:						
<u>Task:</u> Continue backhaul, chipping, and other repair work as appropriate.						
<u>Purpose:</u> Continue completion of repair efforts. Keep fire south of 1508 Road.						
<u>End State:</u> Impacts to natural resources and infrastructure are minimized. Fire contained within primary lines. Completion of suppression repair activities.						
7. Special Instructions:						
Contact DIVS prior to entry to reduce congestion on 1508 Rd.						
Needs: HEQB x 1; TFLD x 1; CHSL x 1						
8. Division/Group Communication Summary						
Function	Channel	RX Frequency N/W	RX Tone/NAC	TX Frequency N/W	TX Tone/NAC	Mode
TACTICAL	SEE COM PLAN					
COMMAND	SEE COM PLAN					
9. Prepared By (Resource Unit Leader)			Approved By (Planning Section Chief)		Date	Time
NICOLE LAGIOIA			MONICA RAMIREZ		09/20/2023	2000

Division/Group Assignment List (ICS 204 WF)
Controlled Unclassified Information//Basic

1. Incident Name:			3.			
BEDROCK LOOKOUT			Branch:		Division/Group	
2. Operational Period: DAY			V		P	
Date/Time From: 09/21/2023 0700 THU	Date/Time To: 09/21/2023 2000 THU					
4. Operations Personnel						
FIELD OPS	TERRY WALTER DAN TRAPANESE (T)		BRANCH DIRECTOR		THOM TAYLOR BRIAN BATES (T)	
AIR ATTACK SUPERVISOR	JOE TONE		DIVISION/GROUP SUPERVISOR		MARK MUNOZ (LWD 9/21) THOMAS GOHEEN	
5. Resources Assigned this Period						
Strike Team / Task Force / Resource Designator	LWD	Leader	Number Persons	Drop Off PT./Time	Pick Up PT./Time	
HEQB O-567	09/26	BART WILSON	1	HOODOO FOB/0700	HOODOO FOB/2000	
HC2 C-88 MARLETTE PEAK CREW	09/21	ERIC ROUSSEL	22	HOODOO FOB/0700	HOODOO FOB/2000	
HC2 C-105 IRON MOUNTAIN FIREFIGHTING C-4	10/02	JOSE JUAN ZAVALA	20	HOODOO FOB/0700	HOODOO FOB/2000	
ENG4 E-615 IDPAF E411	09/23	RIAN PRICE	3	HOODOO FOB/0700	HOODOO FOB/2000	
ENG6 E-632 NCF-642	09/26	KELDON MARTIN	3	HOODOO FOB/0700	HOODOO FOB/2000	
FORW E-607 AXSUS	09/22	BILL KLEIN	2	HOODOO FOB/0700	HOODOO FOB/2000	
EXC2 E-614 FENTER LOGGING	10/02	PAUL FENTER	2	HOODOO FOB/0700	HOODOO FOB/2000	
LOGL E-62 MARK JONES	10/01	ROLAND STRUM	2	HOODOO FOB/0700	HOODOO FOB/2000	
WTS2 E-450 CHARLES E. IRELAND	09/26	CRAIG VEY	1	HOODOO FOB/0700	HOODOO FOB/2000	
SOFC O-674	09/26	GARY STRICKLAND	1	HOODOO FOB/0700	HOODOO FOB/2000	
E-341 AMBO 306	09/26	STEPHEN SPIGELMAN	2	HOODOO FOB/0700	HOODOO FOB/2000	
O-251 MEDIC 213	09/21	BREIANA PURINTON	1	HOODOO FOB/0700	HOODOO FOB/2000	
O-679 MEDIC 224	09/23	ALEX PIZZONIA	1	HOODOO FOB/0700	HOODOO FOB/2000	
O-680 EMT 120	09/23	TRAYSE RIGGLE	1	HOODOO FOB/0700	HOODOO FOB/2000	
O-763 EMT 123	09/27	IAN ROY	1	HOODOO FOB/0700	HOODOO FOB/2000	
O-232 RAT 5	09/21	JEFF FARRIS	2	HOODOO FOB/0700	HOODOO FOB/2000	
REAF O-693	09/23	MARK LEIS	1	HOODOO FOB/0700	HOODOO FOB/2000	
REAF O-889		ERIC GJONNES	1	HOODOO FOB/0700	HOODOO FOB/2000	
REAF O-896	10/04	ASHLEY DI LEONARDI	1	HOODOO FOB/0700	HOODOO FOB/2000	
6. Control Operations/Work Assignments:						
<u>Task:</u> Continue patrol and mop up of primary control lines. Repair suppression damage as appropriate.						
<u>Purpose:</u> Contain fire to the west of HWY 126 and south of HWY 20 to minimize fire impacts to values at risk and infrastructure.						
8. Division/Group Communication Summary						
Function	Channel	RX Frequency N/W	RX Tone/NAC	TX Frequency N/W	TX Tone/NAC	Mode
TACTICAL	SEE COM PLAN					
COMMAND	SEE COM PLAN					
9. Prepared By (Resource Unit Leader)		Approved By (Planning Section Chief)		Date	Time	
NICOLE LAGIOIA		MONICA RAMIREZ		09/20/2023	2000	

Division/Group Assignment List (ICS 204 WF)
Controlled Unclassified Information//Basic

1. Incident Name:				3.			
BEDROCK LOOKOUT				Branch:		Division/Group	
2. Operational Period: DAY				V		P	
Date/Time From: 09/21/2023 0700 THU		Date/Time To: 09/21/2023 2000 THU					
4. Operations Personnel							
FIELD OPS		TERRY WALTER DAN TRAPANESE (T)		BRANCH DIRECTOR		THOM TAYLOR BRIAN BATES (T)	
AIR ATTACK SUPERVISOR		JOE TONE		DIVISION/GROUP SUPERVISOR		MARK MUNOZ (LWD 9/21) THOMAS GOHEEN	
6. Control Operations/Work Assignments:							
End State: Fire is contained and impacts to values at risk and infrastructure along HWY 126 corridor are minimized.							
7. Special Instructions:							
Needs: CHP2 x 1							
8. Division/Group Communication Summary							
Function	Channel	RX Frequency N/W	RX Tone/NAC	TX Frequency N/W	TX Tone/NAC	Mode	
TACTICAL	SEE COM PLAN						
COMMAND	SEE COM PLAN						
9. Prepared By (Resource Unit Leader)			Approved By (Planning Section Chief)			Date	Time
NICOLE LAGIOIA			MONICA RAMIREZ			09/20/2023	2000

Division/Group Assignment List (ICS 204 WF)
Controlled Unclassified Information//Basic

1. Incident Name:				3.		
BEDROCK LOOKOUT				Branch: V	Division/Group T	
2. Operational Period: DAY						
Date/Time From: 09/21/2023 0700 THU		Date/Time To: 09/21/2023 2000 THU				
4. Operations Personnel						
FIELD OPS		TERRY WALTER DAN TRAPANESE (T)		BRANCH DIRECTOR		THOM TAYLOR BRIAN BATES (T)
AIR ATTACK SUPERVISOR		JOE TONE		DIVISION/GROUP SUPERVISOR		CAM CHAMBERS (LWD 9/27) KIP VAN DEWATER (LWD 9/30) (T)
5. Resources Assigned this Period						
Strike Team / Task Force / Resource Designator		LWD	Leader	Number Persons	Drop Off PT./Time	Pick Up PT./Time
TFLD O-649		09/23	MATTHEW ABELL	1	HOODOO FOB/0700	HOODOO FOB/2000
HEQB O-728		09/25	JOSIAH FISCHER	1	HOODOO FOB/0700	HOODOO FOB/2000
HEQB (T) O-729		09/25	DALLAS BUCK	1	HOODOO FOB/0700	HOODOO FOB/2000
HEQB (T) O-765		09/23	TYLER GREENBERG	1	HOODOO FOB/0700	HOODOO FOB/2000
ENG3 E-265 ICE FIRE		09/21	TOM SCHAEFER	3	HOODOO FOB/0700	HOODOO FOB/2000
ENG4 E-256 HI COUNTRY		10/02	JOHN CONGER	3	HOODOO FOB/0700	HOODOO FOB/2000
ENG3 E-451 J3 CONTRACTING (BDRK)		10/03	ANTHONY TENAJILLA	3	HOODOO FOB/0700	HOODOO FOB/2000
ENG4 E-479 J3 CONTRACTING (BDRK)		10/04	CARL MATHENY	3	HOODOO FOB/0700	HOODOO FOB/2000
FEL1 E-280 BRINK BROTHERS (BDRK)		10/02	DAKOTA WELLS	2	HOODOO FOB/0700	HOODOO FOB/2000
EXC1 E-674 ZEB'S TREE SERVICE		10/02	DANNY GOODRICH	2	HOODOO FOB/0700	HOODOO FOB/2000
FEL2 E-442 J & D LOGGING		10/01	DAN SWAN	2	HOODOO FOB/0700	HOODOO FOB/2000
FORW E-594 MILLER TIMBER SERVICES		09/27	CARSON DIXON	1	HOODOO FOB/0700	HOODOO FOB/2000
FORW E-608 EERA - AXSUS		09/24	KEITH DOUGHARITY	2	HOODOO FOB/0700	HOODOO FOB/2000
CHP1 E-538 ANVIL BUILDERS		09/27	NICK MIGNRON	2	HOODOO FOB/0700	HOODOO FOB/2000
CHP1 E-542 MOUNTAIN VIEW TREE		09/29	KAI ELROD	2	HOODOO FOB/0700	HOODOO FOB/2000
CHP1 E-673 WYEAST FORESTRY			**SEE CHECK IN**		HOODOO FOB/0700	HOODOO FOB/2000
LOGL E-240 NORTHWEST		09/27	BAIRD DRAGO	2	HOODOO FOB/0700	HOODOO FOB/2000
LOGT E-646 EERA - WILDKAT TRUCKING		09/27	JODY LANCE	1	HOODOO FOB/0700	HOODOO FOB/2000
WTS2 E-289 HUGHES, PATRICK		09/18	TYLER PATRICK	1	HOODOO FOB/0700	HOODOO FOB/2000
WTS2 E-290 BIGFOOT		09/24	TALON MITCHELL	1	HOODOO FOB/0700	HOODOO FOB/2000
8. Division/Group Communication Summary						
Function	Channel	RX Frequency N/W	RX Tone/NAC	TX Frequency N/W	TX Tone/NAC	Mode
COMMAND	SEE COM PLAN					
TACTICAL	SEE COM PLAN					
9. Prepared By (Resource Unit Leader)			Approved By (Planning Section Chief)		Date	Time
NICOLE LAGIOIA			MONICA RAMIREZ		09/20/2023	2000

Division/Group Assignment List (ICS 204 WF)
Controlled Unclassified Information//Basic

1. Incident Name:			3.			
BEDROCK LOOKOUT			Branch:		Division/Group	
2. Operational Period: DAY			V		T	
Date/Time From: 09/21/2023 0700 THU	Date/Time To: 09/21/2023 2000 THU					
4. Operations Personnel						
FIELD OPS		TERRY WALTER DAN TRAPANESE (T)		BRANCH DIRECTOR THOM TAYLOR BRIAN BATES (T)		
AIR ATTACK SUPERVISOR		JOE TONE		DIVISION/GROUP SUPERVISOR CAM CHAMBERS (LWD 9/27) KIP VAN DEWATER (LWD 9/30) (T)		
5. Resources Assigned this Period						
Strike Team / Task Force / Resource Designator		LWD	Leader	Number Persons	Drop Off PT./Time	Pick Up PT./Time
SOFC O-674		09/26	GARY STRICKLAND	1	HOODOO FOB/0700	HOODOO FOB/2000
O-678 MEDIC 223		09/23	BENJAMIN SHOLL	1	HOODOO FOB/0700	HOODOO FOB/2000
O-681 EMT 121		09/23	LACY SINGHOSE	1	HOODOO FOB/0700	HOODOO FOB/2000
REAF ARCH O-475		09/21	CAYLA KENNEDY	1	HOODOO FOB/0700	HOODOO FOB/2000
REAF O-694		09/24	ROB TITCOMB	1	HOODOO FOB/0700	HOODOO FOB/2000
REAF O-889			ERIC GJONNES	1	HOODOO FOB/0700	HOODOO FOB/2000
REAF O-896		10/04	ASHLEY DI LEONARDI	1	HOODOO FOB/0700	HOODOO FOB/2000
6. Control Operations/Work Assignments:						
<p><u>Task:</u> Patrol, monitor, and mop up any significant heat from DP78 to DP110. Backhaul unneeded equipment. Continue with log processing and hauling operations near DP77 and DP110. Chip slash and repair drainage along roads from DP78 to DP110. Repair dozerline using excavators from DP78 to DP110.</p> <p><u>Purpose:</u> Aid in the completion of repair efforts to areas disturbed by wildfire suppression. Secure southern and eastern flank of the fire.</p> <p><u>End State:</u> Stop southern and eastern progression of the Lookout Fire minimizing impacts to the HWY 126 corridor. Complete fire suppression repair activities east of DP78 and south of DP110. Follow actions outlined in the suppression repair plan.</p>						
7. Special Instructions:						
S-826 Top Fill is located at the DP140 campground.						
Needs: CHSL x 1; EXC3 x 1; EXC2 x 1; CHP2 x 1; HC2 x 1						
8. Division/Group Communication Summary						
Function	Channel	RX Frequency N/W	RX Tone/NAC	TX Frequency N/W	TX Tone/NAC	Mode
COMMAND	SEE COM PLAN					
TACTICAL	SEE COM PLAN					
9. Prepared By (Resource Unit Leader)			Approved By (Planning Section Chief)		Date	Time
NICOLE LAGIOIA			MONICA RAMIREZ		09/20/2023	2000

Division/Group Assignment List (ICS 204 WF)
Controlled Unclassified Information//Basic

1. Incident Name:			3.			
BEDROCK LOOKOUT			Branch:		Division/Group	
2. Operational Period: DAY			V		HORSE CREEK / POTHOLE	
Date/Time From: 09/21/2023 0700 THU	Date/Time To: 09/21/2023 2000 THU					
4. Operations Personnel						
FIELD OPS		TERRY WALTER DAN TRAPANESE (T)		BRANCH DIRECTOR		THOM TAYLOR BRIAN BATES (T)
AIR ATTACK SUPERVISOR		JOE TONE		DIVISION/GROUP SUPERVISOR		AMY MCCLAVE (LWD 9/25) CODY ST. CLAIR (LWD 9/27) (T)
5. Resources Assigned this Period						
Strike Team / Task Force / Resource Designator		LWD	Leader	Number Persons	Drop Off PT./Time	Pick Up PT./Time
TFLD O-781		09/28	REBECCA FRY	1	HOODOO FOB/0700	HOODOO FOB/2000
HEQB O-723		09/26	CHRIS COLT	1	HOODOO FOB/0700	HOODOO FOB/2000
FMOD O-707 TIMBER TIPPER		09/23	NATE ZELLER	2	HOODOO FOB/0700	HOODOO FOB/2000
*ENG3 E-621 GRAND RONDE 131		09/22	JIM STEWART PINDER	10	HOODOO FOB/0700	HOODOO FOB/2000
*ENG6 E-366 AMERICAN		10/05	KATE WEBBER	3	HOODOO FOB/0700	HOODOO FOB/2000
WTS2 E-29 PARAGON (BDRK)		09/24	COLLIN ANDREWS	1	HOODOO FOB/0700	HOODOO FOB/2000
DZR2 E-266 KISER & KISER (BDRK)		09/24	CLIFF KISER	2	HOODOO FOB/0700	HOODOO FOB/2000
EXC2 E-511 EVERY LIVESTOCK		10/04	TOM GREEN	2	HOODOO FOB/0700	HOODOO FOB/2000
EXC4 E-434 AXSUS ENTERPRISES		10/02	ANGELA RICE	2	HOODOO FOB/0700	HOODOO FOB/2000
SKD2 E-274 BRINK BROTHERS		09/29	KYLE PATTERSON	2	HOODOO FOB/0700	HOODOO FOB/2000
FORW E-346 MILLER		09/30	JUSTIN ARMISTEAD	2	HOODOO FOB/0700	HOODOO FOB/2000
FEL1 E-647 DUSTIN CHANTRY		09/28	DUSTIN CHANTRY	2	HOODOO FOB/0700	HOODOO FOB/2000
FORW E-344 MILLER		10/01	EDDIE ORTIZ	2	HOODOO FOB/0700	HOODOO FOB/2000
LOGL E-351 MILLER		09/27	PAUL DOLLAR	2	HOODOO FOB/0700	HOODOO FOB/2000
LOGT E-508 BRINK BROTHERS (BDRK)		09/30	MARK BRINK	2	HOODOO FOB/0700	HOODOO FOB/2000
LOGT E-528 MARK JONES TRUCKING #3		09/21	DAN BROWN	1	HOODOO FOB/0700	HOODOO FOB/2000
SOF1 O-674		09/26	GARY STRICKLAND	1	HOODOO FOB/0700	HOODOO FOB/2000
E-468 AMB2 309		10/03	KYLE SCHULTZ	2	HOODOO FOB/0700	HOODOO FOB/2000
O-54 RAT 4		09/23	RICK BOSTIAN	2	HOODOO FOB/0700	HOODOO FOB/2000
8. Division/Group Communication Summary						
Function	Channel	RX Frequency N/W	RX Tone/NAC	TX Frequency N/W	TX Tone/NAC	Mode
TACTICAL	SEE COM PLAN					
COMMAND	SEE COM PLAN					
9. Prepared By (Resource Unit Leader)			Approved By (Planning Section Chief)		Date	Time
NICOLE LAGIOIA			MONICA RAMIREZ		09/20/2023	2000

Division/Group Assignment List (ICS 204 WF)
Controlled Unclassified Information//Basic

1. Incident Name:			3.			
BEDROCK LOOKOUT			Branch: V	Division/Group HORSE CREEK / POTHOLE		
2. Operational Period: DAY						
Date/Time From: 09/21/2023 0700	THU	Date/Time To: 09/21/2023 2000	THU			
4. Operations Personnel						
FIELD OPS	TERRY WALTER DAN TRAPANESE (T)		BRANCH DIRECTOR	THOM TAYLOR BRIAN BATES (T)		
AIR ATTACK SUPERVISOR	JOE TONE		DIVISION/GROUP SUPERVISOR	AMY MCCLAVE (LWD 9/25) CODY ST. CLAIR (LWD 9/27) (T)		
5. Resources Assigned this Period						
Strike Team / Task Force / Resource Designator	LWD	Leader	Number Persons	Drop Off PT./Time	Pick Up PT./Time	
O-825 MEDIC 231	09/30	LUKE EVERSOLE	1	HOODOO FOB/0700	HOODOO FOB/2000	
O-823 EMT 124	10/01	DANIEL HILBERG	1	HOODOO FOB/0700	HOODOO FOB/2000	
LEAD READ O-37	09/23	MONTE KUK	1	HOODOO FOB/0700	HOODOO FOB/2000	
REAF ARCH O-475	09/21	CAYLA KENNEDY	1	HOODOO FOB/0700	HOODOO FOB/2000	
REAF O-694	09/24	ROB TITCOMB	1	HOODOO FOB/0700	HOODOO FOB/2000	
6. Control Operations/Work Assignments:						
<p><u>Task:</u> Utilize equipment and crews to repair dozer/handlines and backhaul of unnecessary equipment. Utilize equipment to process and haul logs to designated locations. Utilize engines to patrol and maintain existing control lines.</p> <p><u>Purpose:</u> Repair and restore land affected by wildfire and suppression tactics and protecting any values at risk.</p> <p><u>End State:</u> Restore lands affected in accordance to approved repair plans.</p>						
7. Special Instructions:						
*Denotes resources for Initial Attack (IA)						
Needs: CHP1 x 1						
8. Division/Group Communication Summary						
Function	Channel	RX Frequency N/W	RX Tone/NAC	TX Frequency N/W	TX Tone/NAC	Mode
TACTICAL	SEE COM PLAN					
COMMAND	SEE COM PLAN					
9. Prepared By (Resource Unit Leader)		Approved By (Planning Section Chief)		Date	Time	
NICOLE LAGIOIA		MONICA RAMIREZ		09/20/2023	2000	

Division/Group Assignment List (ICS 204 WF)
Controlled Unclassified Information//Basic

1. Incident Name:			3.			
BEDROCK LOOKOUT			Branch:		Division/Group	
2. Operational Period: DAY			EQUIPMENT GROUP			
Date/Time From: 09/21/2023 0700 THU	Date/Time To: 09/21/2023 2000 THU					
4. Operations Personnel						
FIELD OPS	TERRY WALTER DAN TRAPANESE (T)		BRANCH DIRECTOR			
			DIVISION/GROUP SUPERVISOR		THAD NIEBEL (LWD 9/27) GARY CROMBIE (LWD 9/26) (T)	
5. Resources Assigned this Period						
Strike Team / Task Force / Resource Designator	LWD	Leader	Number Persons	Drop Off PT./Time	Pick Up PT./Time	
TFLD (T) O-698	09/23	JACOB OSSOWSKI	1	HOODOO FOB/1900	LOOKOUT ICP/2300	
HEQB (T) O-907	10/03	ERIC FRANTA	1	HOODOO FOB/1900	LOOKOUT ICP/2300	
LOGL E-21 J & D	09/21	LJ SANOWSKI	2	HOODOO FOB/1900	LOOKOUT ICP/2300	
LOGL E-22 J & D	10/03	SAWYER LOGAN	2	HOODOO FOB/1900	LOOKOUT ICP/2300	
LOGL E-61 MARK JONES	09/27	MARK HELLENTHAL	2	HOODOO FOB/1900	LOOKOUT ICP/2300	
LOGL E-241 NORTHWEST	09/23	LEO MILLER	2	HOODOO FOB/1900	LOOKOUT ICP/2300	
LOGL E-352 BRINKS	09/21	CRAIG BRINK	2	HOODOO FOB/1900	LOOKOUT ICP/2300	
LOGL E-353 BRINK	09/25	JASON LARSON	2	HOODOO FOB/1900	LOOKOUT ICP/2300	
LOGL E-354 BRINK	10/02	ROBERT KRUMP	2	HOODOO FOB/1900	LOOKOUT ICP/2300	
LOGL E-513 BRINK BROTHERS (BDRK)	09/23	BRIAN WHITE	2	HOODOO FOB/1900	LOOKOUT ICP/2300	
LOGT E-355 MILLER	09/30	JACOB WEELEREYER	1	HOODOO FOB/1900	LOOKOUT ICP/2300	
LOGT E-356 MILLER	09/27	CARI DICHTER	1	HOODOO FOB/1900	LOOKOUT ICP/2300	
LOGT E-472 MARK JONES	09/28	TOM DEEDON	1	HOODOO FOB/1900	LOOKOUT ICP/2300	
LOGT E-522 MARK JONES TRUCKING	09/30	GREG ALFRIEDO	1	HOODOO FOB/1900	LOOKOUT ICP/2300	
LOGT E-523 MARK JONES TRUCKING (BDRK)	09/30	MICAH JACKSON	1	HOODOO FOB/1900	LOOKOUT ICP/2300	
LOGT E-610 OMALLEY BROTHERS	09/23	NICK PEREZ	1	HOODOO FOB/1900	LOOKOUT ICP/2300	
LOGT E-616 EERA - DEAN INNOVATIONS	09/23	BRETT LEE	1	HOODOO FOB/1900	LOOKOUT ICP/2300	
LOGT E-617 EERA - DEAN INNOVATIONS	09/24	STEPHEN ROGERS	1	HOODOO FOB/1900	LOOKOUT ICP/2300	
LOGT E-618 EERA - DEAN INNOVATIONS	09/24	JUSTIN LUCHT	1	HOODOO FOB/1900	LOOKOUT ICP/2300	
LOGT E-619 DEAN INNOVATIONS	09/23	DAVID LUCHT	1	HOODOO FOB/1900	LOOKOUT ICP/2300	
LOGT E-676 EERA - MARK JONES	10/01	JIMMY HALL	1	HOODOO FOB/1900	LOOKOUT ICP/2300	
LOGT E-677 EERA - MARK JONES	10/01	ED TURNER	1	HOODOO FOB/1900	LOOKOUT ICP/2300	
8. Division/Group Communication Summary						
Function	Channel	RX Frequency N/W	RX Tone/NAC	TX Frequency N/W	TX Tone/NAC	Mode
TACTICAL	SEE COM PLAN					
COMMAND	SEE COM PLAN					
9. Prepared By (Resource Unit Leader)		Approved By (Planning Section Chief)		Date	Time	
NICOLE LAGIOIA		MONICA RAMIREZ		09/20/2023	2000	

Division/Group Assignment List (ICS 204 WF)
Controlled Unclassified Information//Basic

1. Incident Name: BEDROCK LOOKOUT				3. Branch: Division/Group EQUIPMENT GROUP			
2. Operational Period: DAY							
Date/Time From: 09/21/2023 0700 THU		Date/Time To: 09/21/2023 2000 THU					
4. Operations Personnel							
FIELD OPS		TERRY WALTER DAN TRAPANESI (T)			BRANCH DIRECTOR		
				DIVISION/GROUP SUPERVISOR		THAD NIEBEL (LWD 9/27) GARY CROMBIE (LWD 9/26) (T)	
5. Resources Assigned this Period							
Strike Team / Task Force / Resource Designator		LWD	Leader	Number Persons	Drop Off PT./Time	Pick Up PT./Time	
LOGT E-678 EERA - MILLER TIMBER SERVICES		10/01	EARL RAINEY	1	HOODOO FOB/1900	LOOKOUT ICP/2300	
SOF2 O-588		09/26	DAVID HADE	1	HOODOO FOB/1900	LOOKOUT ICP/2300	
E-173 AMBO 304		09/27	RUSSELL LONG- THOMPSON	2	HOODOO FOB/1900	LOOKOUT ICP/2300	
O-679 MEDIC 224		09/23	ALEX PIZZONIA	1	HOODOO FOB/1900	LOOKOUT ICP/2300	
O-682 EMT 122		09/23	ETHAN JARRETT	1	HOODOO FOB/1900	LOOKOUT ICP/2300	
O-763 EMT 123		09/27	IAN ROY	1	HOODOO FOB/1900	LOOKOUT ICP/2300	
O-734 MEDIC 227		09/27	JES TEWS	1	HOODOO FOB/1900	LOOKOUT ICP/2300	
6. Control Operations/Work Assignments:							
<u>Task :</u> Remove deck material to prepare lines for rehab.							
<u>Purpose:</u> Prepare lines for rehab.							
<u>End State:</u> Lines clear of deck materials.							
7. Special Instructions:							
Needs:							
8. Division/Group Communication Summary							
Function	Channel	RX Frequency N/W	RX Tone/NAC	TX Frequency N/W	TX Tone/NAC	Mode	
TACTICAL	SEE COM PLAN						
COMMAND	SEE COM PLAN						
9. Prepared By (Resource Unit Leader) NICOLE LAGIOIA			Approved By (Planning Section Chief) MONICA RAMIREZ			Date 09/20/2023	Time 2000

Division/Group Assignment List (ICS 204 WF)
Controlled Unclassified Information//Basic

1. Incident Name:				3.		
BEDROCK LOOKOUT				Branch:	Division/Group	
2. Operational Period: DAY						
Date/Time From: 09/21/2023 0700 THU		Date/Time To: 09/21/2023 2000 THU		LOOKOUT STAGING		
4. Operations Personnel						
FIELD OPS		TERRY WALTER DAN TRAPANESE (T)		BRANCH DIRECTOR		
AIR ATTACK SUPERVISOR		JOE TONE		STAGING AREA MANAGER TODD GRIFFIN		
5. Resources Assigned this Period						
Strike Team / Task Force / Resource Designator		LWD	Leader	Number Persons	Drop Off PT./Time	Pick Up PT./Time
ENG3 E-164 J3 CONTRACTING (BDRK)		10/05	CHRIS ESCUDERO	3	LOOKOUT ICP/0700	LOOKOUT ICP/2000
ENG3 E-300 HEK JONES		09/26	BRINN JONES	3	LOOKOUT ICP/0700	LOOKOUT ICP/2000
ENG6 E-630 ENG6 - OR-MAF - 43		09/25	KENNETH ANDREW TRAPERO		LOOKOUT ICP/0700	LOOKOUT ICP/2000
ENG6 E-661 FIRST STRIKE		10/01	JOSHUA MIKACEVICH	3	LOOKOUT ICP/0700	LOOKOUT ICP/2000
ENG6 E-663 FIRST STRIKE		10/01	GERALD COATS	3	LOOKOUT ICP/0700	LOOKOUT ICP/2000
DZR2 E-297 COUGAR RIDGE		09/26	DAVE OAKES	2	LOOKOUT ICP/0700	LOOKOUT ICP/2000
SKD2 E-232 ROBERT S MURRAY (BDRK)		10/01	ANNA TITUS	2	LOOKOUT ICP/0700	LOOKOUT ICP/2000
SKG2 E-320 SUTCH, MICHAEL J (BDRK)		09/10	BYRON MILLER	2	LOOKOUT ICP/0700	LOOKOUT ICP/2000
FEL1 E-273 GUMPERT		09/25	CLINT GUMPERT	2	LOOKOUT ICP/0700	LOOKOUT ICP/2000
FEL1 E-612 EERA - AXSUS ENTERPRISE -		09/25	JACK MAREK	2	LOOKOUT ICP/0700	LOOKOUT ICP/2000
FEL1 E-649 EERA - DEAN INNOVATIONS		09/30	DAN FUCHS	1	LOOKOUT ICP/0700	LOOKOUT ICP/2000
FEL2 E-331 MARK JONES		09/24	JAKE BROWN	2	LOOKOUT ICP/0700	LOOKOUT ICP/2000
LOGP E-507 AXSUS ENTERPRISES (BDRK)		09/24	WADE RAINBOLT	2	LOOKOUT ICP/0700	LOOKOUT ICP/2000
6. Control Operations/Work Assignments:						
Achieve efficiency with heavy equipment at Lookout Staging. Determine needs and right size for Lookout Staging area with equipment needed to achieve the best outcome for fire control objectives. Prepare Strube Flats for Willamette National Forest log decking.						
7. Special Instructions:						
Resources report to Lookout Staging 0800 each day. Staging resources need to monitor Command Channel.						
8. Division/Group Communication Summary						
Function	Channel	RX Frequency N/W	RX Tone/NAC	TX Frequency N/W	TX Tone/NAC	Mode
TACTICAL	SEE COM PLAN					
COMMAND	SEE COM PLAN					
9. Prepared By (Resource Unit Leader)		Approved By (Planning Section Chief)		Date	Time	
NICOLE LAGIOIA		MONICA RAMIREZ		09/20/2023	2000	

Division/Group Assignment List (ICS 204 WF)
Controlled Unclassified Information//Basic

1. Incident Name:				3.		
BEDROCK LOOKOUT				Branch:	Division/Group PETE'S LAKE	
2. Operational Period: DAY						
Date/Time From: 09/21/2023 0700 THU		Date/Time To: 09/21/2023 2000 THU				
4. Operations Personnel						
FIELD OPS		REGGIE BRAY		BRANCH DIRECTOR		
AIR ATTACK SUPERVISOR		JOE TONE		DIVISION/GROUP SUPERVISOR		JAMES HONANIE CHRIS BURFORD (T)
5. Resources Assigned this Period						
Strike Team / Task Force / Resource Designator		LWD	Leader	Number Persons	Drop Off PT./Time	Pick Up PT./Time
TFLD O-912		10/01	DAVID MIRANDA	1	WANOGA SPIKE/0700	WANOGA SPIKE/2000
TFLD O-3093		09/21	FRANK GOODSON	1	WANOGA SPIKE/0700	WANOGA SPIKE/2000
TFLD (T) O-3094		09/22	JUSTIN DAVIES	1	WANOGA SPIKE/0700	WANOGA SPIKE/2000
TFLD (T) O-3110		10/02	DANIEL SMITH	1	WANOGA SPIKE/0700	WANOGA SPIKE/2000
HEQB O-3105		09/28	TODD BOWERS	1	WANOGA SPIKE/0700	WANOGA SPIKE/2000
IHC C-94 LA GRANDE IHC		09/21	CHUY ELGUEZABAL	24	WANOGA SPIKE/0700	WANOGA SPIKE/2000
IHC C-96 CRW1 - LOGAN IHC		09/28	ERIC LANDRETH	22	WANOGA SPIKE/0700	WANOGA SPIKE/2000
WTT2 E-3104 TUB SPRINGS		09/28	LARRY MCNAMEE	1	WANOGA SPIKE/0700	WANOGA SPIKE/2000
MBM1 E-225 STATEWIDE		09/29	CEDRIC HAYDEN	2	WANOGA SPIKE/0700	WANOGA SPIKE/2000
MBM2 E-494 PORTABLE ROCK PRODUCTION (BDRK)		09/29	DANIEL BESSETT	2	WANOGA SPIKE/0700	WANOGA SPIKE/2000
MBM2 E-3012 JUSTIN PITTS		09/21	RON LEVANG	2	WANOGA SPIKE/0700	WANOGA SPIKE/2000
MBM2 E-3013 J3 CONTRACTING		09/21	DAN LANE	2	WANOGA SPIKE/0700	WANOGA SPIKE/2000
CHP2 E-3119 BIG BARK CHIPPER		10/04	BRODY BURRIGHT	3	WANOGA SPIKE/0700	WANOGA SPIKE/2000
CHP2 E-3120 A&H FORESTRY		10/03	DREW STONZBERG	3	WANOGA SPIKE/0700	WANOGA SPIKE/2000
DOZ2 L/L 230 (PETE)			DAN LERMAN	1	WANOGA SPIKE/0700	WANOGA SPIKE/2000
DOZ2 L/L 231 (PETE)			DAN HAUSWOLD	1	WANOGA SPIKE/0700	WANOGA SPIKE/2000
ENG6 E3110 PATRICK		10/01	PAUL RAMPININI	3	WANOGA SPIKE/0700	WANOGA SPIKE/2000
ENG6 E-3111 PATRICK		10/01	ONASIS ADAME	3	WANOGA SPIKE/0700	WANOGA SPIKE/2000
8. Division/Group Communication Summary						
Function	Channel	RX Frequency N/W	RX Tone/NAC	TX Frequency N/W	TX Tone/NAC	Mode
TACTICAL	SEE COMM PLAN					
COMMAND	SEE COMM PLAN					
9. Prepared By (Resource Unit Leader)			Approved By (Planning Section Chief)		Date	Time
NICOLE LAGIOIA			MONICA RAMIREZ		09/20/2023	2000

Division/Group Assignment List (ICS 204 WF)
Controlled Unclassified Information//Basic

1. Incident Name:			3.			
BEDROCK LOOKOUT			Branch:		Division/Group	
2. Operational Period: DAY					PETE'S LAKE	
Date/Time From: 09/21/2023 0700 THU		Date/Time To: 09/21/2023 2000 THU				
4. Operations Personnel						
FIELD OPS		REGGIE BRAY		BRANCH DIRECTOR		
AIR ATTACK SUPERVISOR		JOE TONE		DIVISION/GROUP SUPERVISOR		JAMES HONANIE CHRIS BURFORD (T)
5. Resources Assigned this Period						
Strike Team / Task Force / Resource Designator		LWD	Leader	Number Persons	Drop Off PT./Time	Pick Up PT./Time
ENG6 E-3112 PATRICK		10/01	DICK SYPHERS	3	WANOGA SPIKE/0700	WANOGA SPIKE/2000
ENG6 E-3113 WOODPECKER		10/01	ALEX WOLFF	3	WANOGA SPIKE/0700	WANOGA SPIKE/2000
ENG6 E-3114 STEELHEAD ENTERPRISES		10/01	JOHN TALOR	3	WANOGA SPIKE/0700	WANOGA SPIKE/2000
ENG6 E-3115 TERRENCE TITUS		09/25	THOMAS HAMILTON	3	WANOGA SPIKE/0700	WANOGA SPIKE/2000
SOF2 O-826		10/02	QUINCY CHUNG	1	WANOGA SPIKE/0700	WANOGA SPIKE/2000
E-76 AMBO 311		09/21	SAM NAKANISHI	2	WANOGA SPIKE/0700	WANOGA SPIKE/2000
O-55 REMS1		09/28	SAGE STEWART	4	WANOGA SPIKE/0700	WANOGA SPIKE/2000
O-734 MEDIC 227		09/27	JES TEWS	1	WANOGA SPIKE/0700	WANOGA SPIKE/2000
6. Control Operations/Work Assignments:						
<p>Task: Continue preparation of shaded fuel break along Cascade Lakes Highway. Implement pump/hose/sprinkler systems in accordance with the Pete's Lake Structure Protection Plan.</p> <p>Purpose: To prevent the spread of fire east of the highway and to protect values at risk including infrastructure, scenic corridor, resorts, and recreation property.</p> <p>End State: A secure holding feature that provides scenic value and fire resilience to the entities along the Cascade Lakes Highway.</p>						
7. Special Instructions:						
All resources available for local IA.						
Needs:						
8. Division/Group Communication Summary						
Function	Channel	RX Frequency N/W	RX Tone/NAC	TX Frequency N/W	TX Tone/NAC	Mode
TACTICAL	SEE COMM PLAN					
COMMAND	SEE COMM PLAN					
9. Prepared By (Resource Unit Leader)			Approved By (Planning Section Chief)		Date	Time
NICOLE LAGIOIA			MONICA RAMIREZ		09/20/2023	2000

Division/Group Assignment List (ICS 204 WF)

Controlled Unclassified Information//Basic

1. Incident Name:			3.			
BEDROCK LOOKOUT			Branch:		Division/Group	
2. Operational Period: DAY						
Date/Time From: 09/21/2023 0700 THU		Date/Time To: 09/21/2023 2000 THU		ROADS BEDROCK NORTH		
4. Operations Personnel						
FIELD OPS		TERRY WALTER DAN TRAPANESE (T)		BRANCH DIRECTOR		
AIR ATTACK SUPERVISOR		JOE TONE		GROUP SUPERVISOR DUANE CHATHAM		
5. Resources Assigned this Period						
Strike Team / Task Force / Resource Designator		LWD	Leader	Number Persons	Drop Off PT./Time	Pick Up PT./Time
GRD2 E-503 PORTABLE ROCK		09/23	JIMMY POWELL	2	LOOKOUT ICP/0700	LOOKOUT ICP/2000
VROL E-471 DEAN INNOVATIONS		10/01	KELLY	1	LOOKOUT ICP/0700	LOOKOUT ICP/2000
WTS2 E-129 WARREN KIRK PARTRIDGE (BDRK)		09/28	KIM REIDA	1	LOOKOUT ICP/0700	LOOKOUT ICP/2000
WTS2 E-373 SIREN		09/21	ZACH	1	LOOKOUT ICP/0700	LOOKOUT ICP/2000
6. Control Operations/Work Assignments:						
Working on Road 1817 moving to Road 1830						
7. Special Instructions:						
This work is to insure safe travel for personnel and to protect the road's integrity.						
Resources should utilize the Comm Plan for area working.						
8. Division/Group Communication Summary						
Function	Channel	RX Frequency N/W	RX Tone/NAC	TX Frequency N/W	TX Tone/NAC	Mode
TACTICAL	SEE COMM PLAN					
COMMAND	SEE COMM PLAN					
9. Prepared By (Resource Unit Leader)			Approved By (Planning Section Chief)		Date	Time
NICOLE LAGIOIA			MONICA RAMIREZ		09/20/2023	2000

Division/Group Assignment List (ICS 204 WF)
Controlled Unclassified Information//Basic

1. Incident Name:			3.			
BEDROCK LOOKOUT			Branch:		Division/Group	
2. Operational Period: DAY					ROADS BEDROCK SOUTH	
Date/Time From: 09/21/2023 0700 THU	Date/Time To: 09/21/2023 2000 THU					
4. Operations Personnel						
FIELD OPS	TERRY WALTER DAN TRAPANESE (T)		BRANCH DIRECTOR			
AIR ATTACK SUPERVISOR	JOE TONE		GROUP SUPERVISOR		DUANE CHATHAM	
5. Resources Assigned this Period						
Strike Team / Task Force / Resource Designator	LWD	Leader	Number Persons	Drop Off PT./Time	Pick Up PT./Time	
GRD1 E-484 TABLE MOUNTAIN FORESTRY	10/03	JUSTIN CODY	1	LOOKOUT ICP/0700	LOOKOUT ICP/2000	
VROL E-524 EERA - BFC LIMITED7 (BDRK)	10/03	KELLEY THORNE	1	LOOKOUT ICP/0700	LOOKOUT ICP/2000	
WTS2 E-472 OUTLAW WILDLAND SRV (BDRK)	10/03	THOMAS SMALL	1	LOOKOUT ICP/0700	LOOKOUT ICP/2000	
WTS2 E-473 LEE ROY BELLOIR & SONS (BDRK)	10/03	RANDY BELLIOR	1	LOOKOUT ICP/0700	LOOKOUT ICP/2000	
DUMP E-496 RUSSELLS MANAGEMENT (BDRK)	09/26	AUSTIN WILEY	1	LOOKOUT ICP/0700	LOOKOUT ICP/2000	
DUMP E-497 RUSSELLS MANAGEMENT (BDRK)	09/26	KEEGAN CUNNINGHAM	1	LOOKOUT ICP/0700	LOOKOUT ICP/2000	
BHOE E-498 AXSUS ENTERPRISES -	09/21	PETER MCANERIN	2	LOOKOUT ICP/0700	LOOKOUT ICP/2000	
BHOE E-499 AXSUS ENTERPRISES	09/24	DAN GARLAND	2	LOOKOUT ICP/0700	LOOKOUT ICP/2000	
6. Control Operations/Work Assignments:						
Working spur roads on south zone of Bedrock						
7. Special Instructions:						
This work is to insure safe travel and to protect the integrity of the roadway.						
Resources should utilize the Comm Plan for area working.						
8. Division/Group Communication Summary						
Function	Channel	RX Frequency N/W	RX Tone/NAC	TX Frequency N/W	TX Tone/NAC	Mode
TACTICAL	SEE COMM PLAN					
COMMAND	SEE COMM PLAN					
9. Prepared By (Resource Unit Leader)		Approved By (Planning Section Chief)		Date	Time	
NICOLE LAGIOIA		MONICA RAMIREZ		09/20/2023	2000	

Division/Group Assignment List (ICS 204 WF)
Controlled Unclassified Information//Basic

1. Incident Name:				3.		
BEDROCK LOOKOUT				Branch:	Division/Group	
2. Operational Period: DAY						
Date/Time From: 09/21/2023 0700 THU		Date/Time To: 09/21/2023 2000 THU				
ROADS LOOKOUT						
4. Operations Personnel						
FIELD OPS	TERRY WALTER DAN TRAPANESE (T)			BRANCH DIRECTOR		
AIR ATTACK SUPERVISOR	JOE TONE			GROUP SUPERVISOR		DUANE CHATHAM
5. Resources Assigned this Period						
Strike Team / Task Force / Resource Designator	LWD	Leader	Number Persons	Drop Off PT./Time	Pick Up PT./Time	
DZR2 E-27 J B LOGGING	10/01	JOEL HERBST	2	LOOKOUT ICP/0700	LOOKOUT ICP/2000	
GRD1 E-391 GRANITE	09/26	GRANT BEMIS	2	LOOKOUT ICP/0700	LOOKOUT ICP/2000	
WTS2 E-427 BLISS FD 93403	09/23	TAYLOR PTERSON	1	LOOKOUT ICP/0700	LOOKOUT ICP/2000	
GWT1 E-460 EERA - WICKIZER ENTERPRISES	09/30	DAVID WICKIZER	1	LOOKOUT ICP/0700	LOOKOUT ICP/2000	
WTS2 E-513 RUNDELL	09/27	SAM TILFORD	1	LOOKOUT ICP/0700	LOOKOUT ICP/2000	
WTS2 E-522 T DICKSON TRUCKING	09/23	TROY DICKSON	1	LOOKOUT ICP/0700	LOOKOUT ICP/2000	
6. Control Operations/Work Assignments:						
Working on Roads 15 & 1506						
7. Special Instructions:						
Resources should utilize the Comm Plan for area working.						
8. Division/Group Communication Summary						
Function	Channel	RX Frequency N/W	RX Tone/NAC	TX Frequency N/W	TX Tone/NAC	Mode
COMMAND	SEE COMM PLAN					
TACTICAL	SEE COMM PLAN					
9. Prepared By (Resource Unit Leader)			Approved By (Planning Section Chief)		Date	Time
NICOLE LAGIOIA			MONICA RAMIREZ		09/20/2023	2000

AIR OPERATIONS SUMMARY ICS-220

Incident Name / Number Lookout/Bedrock	Sunrise 0652	Pumpkin 1935	Sunset 1905	Time Prepared 1700 Shutdown 1900	Date Prepared 9/20/23 Operational Period - Date 09/21/23	Prepared By <i>Kyle Stamp</i> Operational Period - Time 0700-2200
General Remarks, Safety Notes, Hazards, Air Operations Special Equipment, etc. * Be aware of retardant avoidance areas, 300ft away from waterways and bodies of water. * Sanitize Buckets before changing water sources. * All GPS is to be collected in DD° MM'.MM" * Be cognizant of all overhead and environmental hazards while working with Aircraft. * Clear drop arealine before initiating drop sequence. * Avoid power lines near Trail Bridge Dip site. * Order All Aircraft through ATGS or Sun River Helibase * Santiam Junction Airport (8S3) is closed. * Sun River Helibase costs to: lookout.helibase@gmail.com						

Incident F frequencies	RX	Tone	TX	Tone	AM/FM	Position	Name	Phone	EQUIPMENT/SUPPLIES
Lookout A/A (TFR)	118.0750				AM	AODB	Cory Dolberry	509-668-2801	Sun River HLB trailer
A/A Rotor	120.0750				AM	AODB-T	Kyle Stump	208-816-3141	Heliwell
A/A Briefing/Handoff	135.2000				AM	ASGS	Greg Scully	907-240-4660	
A/G primary	167.0625		167.0625		FM	ASGS-T	Ben Critenden	916-809-0410	
A/G secondary	169.2000		169.2000		FM	HEBM	(Sun River) Jeremy McIntosh	775-843-6976	
A/G Tactical Firing	171.1125		171.1125		FM	HEBM-T	(Sun River) Rob Jennings	909-499-3082	
DECK Sun River	168.3500		168.3500		FM				
TOLC Sun River	164.8625		164.8625		FM	ATGS	Joe Tone	360-518-6266	
DECK Santiam	163.1000		163.1000		FM	OR-WIF UAO	Nick White	541-620-5968	
TOLC Santiam	168.3375		168.3375		FM				
Pete's Lake A/A (TFR)	134.8500		134.8500		AM				
IA A/G White ODF	151.3100	156.7	151.3100	156.7	FM				
IA A/G 50 USFS	168.2875		168.2875		FM				
AIR GUARD	168.6250		168.6250	110.9	FM				

HELICOPTERS Sun River Helibase													
FAA #	TYPE	Make/Model	Helibase	Start	Avail	Remarks	FAA #	TYPE	Make/Model	Helibase	Start	Avail	Remarks
N38HX	3	AS350B3E	Sun River	0700	0800	Short-haul - GACC Prepo							
N27HX	3	Bell 407	Sun River	0700	0800	Recon, Bucket							
N99WL	2	Bell 205++	Sun River	0700	0800	Rappel, Bucket							
N767NA	1	Kmax	Sun River	0700	0800	Bucket							
N170CB	1	Kmax	Sun River	0700	0800	Bucket							
N368EV	1	AS332L1	Sun River	0700	0800	Bucket							

UAS FIXED WING AA/HLCO													
Call Sign	Type	Make/Model	Base	Start	Avail	Remarks	FAA #	Call Sign	Make/Model	Base	Start	Avail	Remarks
							N844CH	Lookout A/A	AC 690B	S21	0800	0900	Sun River Airport

INCIDENT RADIO COMMUNICATIONS PLAN (ICS 205)		Incident Name		Date/Time Prepared		Operational Period Date/Time					
		Lookout		9/20/2023	1900	09/21/2023 - All Shifts					
Zn Ch	Function	Channel Name/Trunked Radio System Talkgroup	Assignment	RX Freq N or W	RX Tone/NAC	TX Freq N or W	Tx Tone/NAC	Dev	Pwr	Mode	Remarks
1	COMMAND	CMD 1	ALL BRANCHES	169.5375	156.7	164.7125	156.7	N	H	A	Located East of Fire Area
2	COMMAND	CMD 2	ALL BRANCHES	168.4750	156.7	165.4000	156.7	N	H	A	Located NW of Fire Area
3	COMMAND	CMD 3	ALL BRANCHES	170.2875	156.7	163.6125	156.7	N	H	A	Located on Mt. Bachelor/ Pete's Lake
4	COMMAND	CMD 4	ALL BRANCHES	171.0625	156.7	163.8250	156.7	N	H	A	Covers ICP + Hwy 126
5	COMMAND	CMD 5	ALL BRANCHES	170.6875	156.7	166.5750	156.7	N	H	A	Hoodoo Butte
6	TACTICAL	TAC 1	DIV A / C	168.0500	156.7	168.0500	156.7	N	H	A	Division Alpha & Division Charley
7	TACTICAL	TAC 2	Pothole/Horse Cr	168.2000	156.7	168.2000	156.7	N	H	A	Pothole / Horse Creek
8	TACTICAL	TAC 3	DIV H	168.6000	156.7	168.6000	156.7	N	H	A	Division Hotel / White Pine
9	TACTICAL	TAC 4	DIV L/Pete's Lake	168.2500	156.7	168.2500	156.7	N	H	A	Division Lima / Pete's Lake
10	TACTICAL	TAC 5	DIV P	166.7250	156.7	166.7250	156.7	N	H	A	Division Papa
11	TACTICAL	TAC 6	DIV T / Equip Grp	166.7750	156.7	166.7750	156.7	N	H	A	Division Tango / Equipment Grp
12	Forest Rptr.	Frissell	ALL DIVS	172.2500	103.5	164.9125	162.2	N	H	A	To Eugene Dispatch
13	Air-to-Ground	A/G PRI	ALL DIVS	167.0625	NONE	167.0625	NONE	N	H	A	Primary AIR TO GROUND
14	Air-to-Ground	A/G SEC	ALL DIVS	169.2000	NONE	169.2000	NONE	N	H	A	SECONDARY AIR TO GROUND
15	Air-to-Ground	VMED 29	MEDEVAC	155.3475	NONE	155.3475	156.7	N	H	A	Life Flight
16	EMERGENCY	AIRGUARD	EMERGENCY	168.6250	NONE	168.6250	110.9	N	H	A	EMERGENCY USE ONLY
Prepared By (Communications Unit Leader)				Incident Location:		Forest / Unit / Jurisdiction:					
Keith Brown - COML <i>Keith P. Bazama</i>				Lookout Communications (661) 349-1513		County: OR State: OR		Latitude: " N Longitude: W			

All Lookout fire resources should use Clone 93 Lookout as of 9/3/2023. All Divisions, use Command repeater that's best in your location.

INCIDENT RADIO COMMUNICATIONS PLAN (ICS 205)		Incident Name		Date/Time Prepared		Operational Period Date/Time					
		Bedrock		9/20/2023 1900		09/21/2023 - All Shifts					
Zn Ch	Function	Channel Name/Trunked Radio System Talkgroup	Assignment	RX Freq N or W	RX Tone/NAC	TX Freq N or W	Tx Tone/NAC	Dev	Pwr	Mode A, D or M	Remarks
1	TACTICAL	TAC 1	North Repair	168.2500	136.5	168.2500	136.5	N	H	A	North Repair
2	TACTICAL	TAC 2	South Repair	166.7750	136.5	166.7750	136.5	N	H	A	South Repair
3	TACTICAL	TAC 3		166.7250	136.5	166.7250	136.5	N	H	A	UNASSIGNED
4	TACTICAL	TAC 4		168.6000	136.5	168.6000	136.5	N	H	A	UNASSIGNED
5	TACTICAL	TAC 5		168.2000	136.5	168.2000	136.5	N	H	A	UNASSIGNED
6	COMMAND	CMD 6	ALL BRANCHES	170.2500	136.5	162.8125	136.5	N	H	A	ALL - COMMAND (WEST) BEAR.MTN
7	COMMAND	CMD 7	Not In Use	170.0000	136.5	166.6750	136.5	N	H	A	Not In Use
8	COMMAND	CMD 8	ALL BRANCHES	170.4125	136.5	165.9625	136.5	N	H	A	ALL - COMMAND (EAST) INDIAN FALL CRK
9	COMMAND	CMD 9	ALL BRANCHES	173.0375	136.5	167.3250	136.5	N	H	A	ALL - COMMAND (NE) PERNOT.MTN
10	COMMAND	CMD 10	ALL BRANCHES	171.0375	136.5	162.1875	136.5	N	H	A	ALL - COMMAND (SOUTH) SINKER.MTN
11	COMMAND	CMD 11	ALL BRANCHES	170.3125	136.5	164.6000	136.5	N	H	A	ALL - COMMAND SALMON BRANCH
12	TACTICAL	TAC 12		166.6000	136.5	166.6000	136.5	N	H	A	UNASSIGNED
13	Air-to-Ground	A/G PRI	ALL DIVS	172.4625	NONE	172.4625	NONE	N	H	A	Primary AIR TO GROUND
14	Air-to-Ground	A/G SEC	ALL DIVS	172.6750	NONE	172.6750	NONE	N	H	A	SECONDARY AIR TO GROUND
15	Air-to-Ground	V MED 29	MEDEVAC	155.3475	NONE	155.3475	156.7	N	H	A	Life Flight
16	EMERGENCY	AIRGUARD	EMERGENCY	168.6250	NONE	168.6250	110.9	N	H	A	EMERGENCY USE ONLY
Prepared By (Communications Unit Leader)				Incident Location:		Forest / Unit / Jurisdiction:		Latitude: " N		Longitude: W	
Keith Brown - COML				County: OR		State: OR		State: OR		Longitude: W	
Keith P. Pyram				Lookout Communications (661) 349-1513							
				64978008628840...							

All Divisions, use Command repeater that's best in your location.

INCIDENT RADIO COMMUNICATIONS PLAN (ICS 205)		Incident Name		Date/Time Prepared		Operational Period Date/Time					
		FOREST IA		9/20/2023 1900		09/21/2023 - All Shifts					
Zn Ch	Function	Channel Name/Trunked Radio System Talkgroup	Assignment	RX Freq N or W	RX Tone/NAC	TX Freq N or W	Tx Tone/NAC	Dev	Pwr	Mode A, D or M	Remarks
1	TACTICAL	TAC 1	TAC 1	166.6000	136.5	166.6000	136.5	N	H	A	IA TAC
2	TACTICAL	TAC 2	RED NET	151.3400	156.7	151.3400	156.7	N	H	A	ODF RED NET
3	Air-to-Ground	A/G	White NET	151.3100	156.7	151.3100	156.7	N	H	A	ODF A/G
4	TACTICAL	PROJ MDL	PROJ MDL	168.7750	103.5	168.7750	103.5	N	H	A	USFS MIDDLE FORK PROJECT
5	COMMAND	TIMBER CK	TIMBER CK	170.4625	103.5	164.8250	131.8	N	H	A	USFS TIMBER CREEK
6	COMMAND	CMD 6	ALL BRANCES	170.2500	136.5	162.8125	136.5	N	H	A	BEDROCK COMMAND (WEST) BEAR MTN
7	COMMAND	CMD 7	Not In Use	170.0000	136.5	166.6750	136.5	N	H	A	Not In Use
8	COMMAND	LOWELL	LOWELL	170.4625	103.5	164.8250	110.9	N	H	A	USFS LOWELL
9	COMMAND	CMD 9	ALL BRANCES	173.0375	136.5	167.3250	136.5	N	H	A	BEDROCK COMMAND (NO) PERNOT MTN
10	COMMAND	CMD 10	ALL BRANCES	171.0375	136.5	162.1875	136.5	N	H	A	BEDROCK COMMAND (SOUTH) SINKER MTN.
11	Air-to-Ground	A/G 50	ALL DIVS	168.2875	NONE	168.2875	NONE	N	H	A	A/G PRIMARY - LOCAL
12	Air-to-Ground	A/G 59	ALL DIVS	169.1125	NONE	169.1125	NONE	N	H	A	A/G SECONDARY - LOCAL
13	Air-to-Ground	A/G PRI	ALL DIVS	172.4625	NONE	172.4625	NONE	N	H	A	AIR TO GROUND PRIMARY - BEDROCK
14	Air-to-Ground	A/G SEC	ALL DIVS	172.6750	NONE	172.6750	NONE	N	H	A	AIR TO GROUND SECONDARY-BEDROCK
15	Air-to-Ground	VMED 29	MEDEVAC	155.3475	NONE	155.3475	156.7	N	H	A	MEDICAL EVACUATION ONLY
16	EMERGENCY	AIRGUARD	EMERGENCY	168.6250	NONE	168.6250	110.9	N	H	A	EMERGENCY USE ONLY
Prepared By (Communications Unit Leader)				Incident Location:		Forest / Unit / Jurisdiction:		Latitude: " N		Longitude: W	
Keith Brown - COM1				Lookout Communications (661) 349-1513		County: OR		State: OR			
Signature: <i>Keith P. Brown</i>				649/809828440							

All Lookout fire resources should use Clone 93 as of 9/3/2023. All Divisions, use Command repeater that's best in your location.

HEALTH AND SAFETY MESSAGE
Pacific Northwest Incident Management Team 2



INCIDENT: Lookout~Bedrock~Pete's Lake

DATE: 9/21/2023

CHOOSE SAFETY

Safety is about taking action, seeing the big picture and noticing the small things. If you see something, say something, we're all in it together.

Safety is not:

- compromising but mitigating
- following but leading
- forced but a choice
- rhetoric it is action
- telling but showing

Ask yourself why you should practice safety? I look at my family and it is easy to tell you why I do.

Major Hazards

CHIPPING	COMPLACENCY	HEAVY EQUIPMENT
UNSETTLED WEATHER	LOG HAULING	HEAT IN HEAVY FUEL
SNAGS	STEEP TERRAIN	ROLLING MATERIAL

10 Tips for Mental Fitness

- Prioritize sleep
- Practice mindfulness
- Stay physically active
- Connect with others
- Take breaks
- Practice self-compassion
- Set boundaries
- Seek support
- Engage in activities you enjoy
- Take care of your physical health

<https://wffoundation.org/mentalhealth/mentalhealth-10-self-care-tips>

Contagious disease spread can be decreased by these measures:

- Good hand washing and hygiene
- Eating, sleeping, and congregating in smaller groups
- Good rest, nutrition, and hydration
- Wearing clean clothes, taking showers if available, and cleaning vehicles with bleach wipes
- Isolating yourself if you become ill and getting medically evaluated/tested
- Keeping food & water sources away from waste and sewer systems
- Regularly sanitizing high-touch surfaces in buildings and vehicles

<https://www.nwcg.gov/committee/6mfs/contagious-diseases>

PNW2 Safety Officers

LOGISTICS MESSAGE

COMMUNICATIONS	Ph. 661-349-1513 Staffed 24 Hrs. (Lookout ICP)
-----------------------	---

ALL LINE ORDERS ARE TO GO THROUGH COMMUNICATIONS. (See line order form)

Lookout ICP/Base (Walterville, OR)

Location	38656 Kickbusch Lane Walterville, OR 97478
Supply	Hours: 0600 – 2200 Phone: 423-220-7055
Laundry	Hours 0600 -1000 & 1500-2200
Fuel Truck	Hours: 0600 - 2100
Communications	Hours: 24 hour service
Kitchen	Hours: 0600 - 0900 Breakfast, Lunch pick up at reefer Hours: 1800 - 2100 Dinner
Weed Wash	Hours: 0700 - 1400 & 1600 - 2000
Showers	El Dorado: Hours: 0500 - 1200 & 1400 - 2200
Facilities Message:	Please email ALL Facility orders to 2023.Lookout.Facilities@Gmail.com
Ground Support	Hours: 0600 - 2130
Saw Shop	Hours: 0600 – 1100 & 1600 – 2200 Phone: 208-481-2589

Lookout Staging (Rock Quarry)

Location	54547 McKenzie HWY
Ground Support	Hours: 0600 - 2130
Fuel Truck	Hours: 0600 - 2100
Weed Wash	Hours: 0700 – 1400 & 1600 - 2000

Hoodoo Forward Operating Base

Location	27400 Big Lake Rd, Sisters OR 97759
Communications	Hours: 0600-2200
Ground Support	Hours: 0600 - 2130
Fuel Truck	Hours: 0600 – 2100
Showers	Backcountry: Hours: 0500 - 1200 & 1400 - 2200
Kitchen	Hours: 0600 - 0900 Breakfast Lunch pick up at refer Hours: 1800 – 2100 Dinner
Supply	0600 - 2200
Weed Wash	Hours: 0700 – 1400 1600 - 2000
Laundry drop off available next to refer trailer. Two day turn-around for all laundry.	

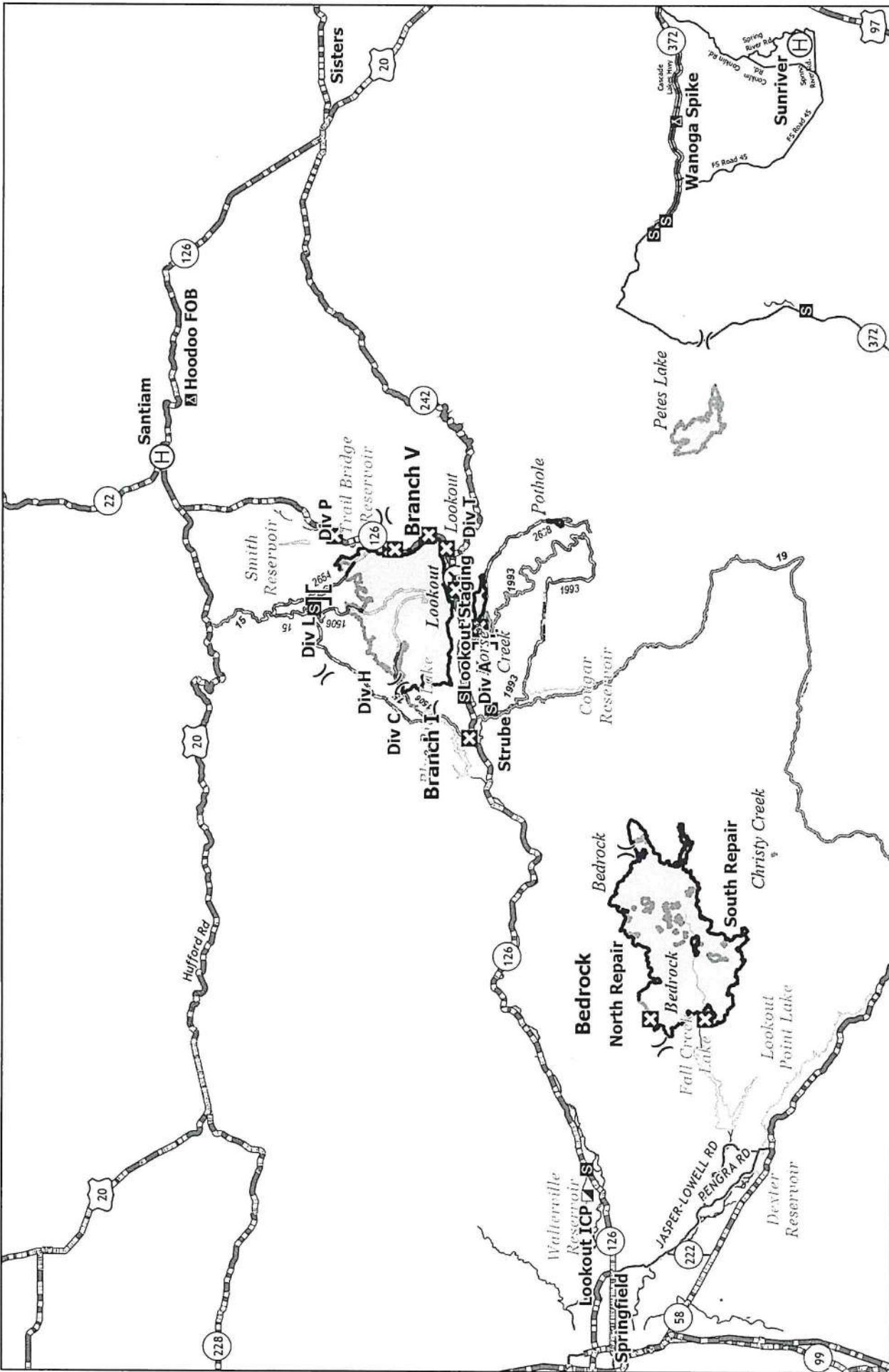
Transportation Contacts for Ground Support

Lookout ICP	Eugene Quilter: 435-691-4130
Lookout Staging	Todd Griffin: 206-660-9644
HooDoo FOB	Mike Howard 541-602-0843

Wanoga Spike

Location	HWY 46 – Cascade Lakes
Lunches and IAP/Maps	Delivered 0630

**ORDERING: Lookout: 2023.lookout.ordering@firenet.gov
 Bedrock: 2023.bedrock.ordering@firenet.gov
 Pete's Lake: 2023.peteslake.ordering@firenet.gov**



Lookout ICP : 38601 Camp Creek Road, Waltherville, OR 97489
 (14.5 Miles from Eugene, 19 min) - Weed Wash Station
Lookout Staging: 54547 McKenzie Hwy, Blue River, OR 97413 - Weed Wash Station
Hoodoo FOB: 27400 Big Lake Rd., Sisters, OR 97759 - Weed Wash Station
Wanoga Spike: 15523 Cascade Lakes Hwy, La Pine, OR 97739

- ⊗ Airstrip or Airport
- ⊕ Helibase
- ⊗ Division Break
- ⊏ Branch Break
- ⊠ Incident Command Post
- ⊠ Closure
- ⊠ Camp
- ⊠ Staging Area
- ⊠ Fire Area

Transportation
 Bedrock - ORWIF-230266
 Lookout - ORWIF-230327
 Petes Lake - ORWIF-230409
 09/2 1/2023



Finance Message



Please email your CTRs & Shift Tickets to the fire listed on your resource order.

Lookout: 2023.lookout.finance@firenet.gov
 Bedrock: 2023.bedrock.finance@firenet.gov
 Petes Lake: 2023.peteslake.finance@firenet.gov

SUBJECT: *EQUIPMENT* for Contract Resources
 SUBJECT: *TIME* for Fed, State, & Local Gov't Crews & Employees

Lookout ICP 661-349-1530
 Hoodoo Camp 971-713-0359
 Comp Claims 360-318-5211

Please indicate the name & number **of the fire where you are working** on all CTRs & Shift Tickets

LOOKOUT QH2A OR-WIF-230327	HORSE CREEK QLQ0 OR-WIF-230392	PETES LAKE QLV9 OR-WIF-230409	POTHOLE QLK2 OR-WIF-230393	BEDROCK QEW8 OR-WIF-230266
----------------------------------	--------------------------------------	-------------------------------------	----------------------------------	----------------------------------

PLEASE SUBMIT ALL DOCUMENTS IN PDF FORMAT

Documents you must submit to finance

Government & Cooperator Resources	Contract Resources
<ul style="list-style-type: none"> • Upon Check-In: Crew Manifest, Cooperative Agreement (if applies), AD Hire Letter, Resource Order • Daily: Crew Time Report (CTR), Shift Tickets • Demob: Signed OF288, Final Equipment Use Invoice (Cooperator) 	<ul style="list-style-type: none"> • Upon Check-In: Resource Order, Full Contract/Agreement, Certifications (<i>if required</i>), Pre-Inspection • Daily: Shift Tickets, receipts (fuel issues, claims, hotels, etc.) • Demob: Contractor Evaluations, Final Shift Tickets and receipt(s) for Addition/Deductions, Post-Inspection, Final Signed Invoices

Contract Vendors, if you have been here for 14 days or more and wish to have an interim payment processed, please see finance.

If you are listed below – please call, email or visit finance. 😊

Finance is open at 0600 so please feel free to stop in before briefing!

PERSONNEL LIST		CONTRACTED RESOURCES			
PETES LAKE		BEDROCK		LOOKOUT	
O105	Bowers, Todd	E524	BFC Limited	E114-121	AAA Mobile BaseCamp
O99	Clement, Beverly	E508	Brink Brothers	E123	AAA Mobile BaseCamp
O94	Davies, Justin	E200	Bucks Sanitary Service	E184	Bear Creek
O94	Davies, Justin	E450	Charles irelands	E189	Brink Brothers
O93	Goodson, Frank	E164	J3 Contracting	E616	Dean Innovations
O76	Long, Emily	E164	J3 Contracting	E649	Dean Innovations
O96-8	LOWE, AMY	E451	J3 Contracting	E649	Dean Innovations
O96-6	PYKE, LEE	E544	J3 Contracting / AXSUS	E327	Heli-Fire Support Int'l.
O85	SCHNABEL, SAMUEL	E67	Lee Roy belloir & Sons	O824	High Priority Consultants
A41-3	Wallace, Robert	E523	Mark Jones	E299	Mark Jones Trucking
LOOKOUT		E-41	Outback Firefighting	E524	Michael D Martines Wildland Support
O655	Bradley, Tyler	E503	Portable Rock Production	E355	Miller Timber
O-729	Buck, Dallas	E496	Russell Management	E414	Pacific Ridgeline
O645	Curley, Elliot	E497	Russells Management	E225	Statewide
O742	Domis Derek	E431	Weyerhaeuser	E672	T2 Inc
E621	Grand Ronde 131	E29	Paragon Water Tenders	O709	Top Notch
O588	Hade, David				
O-730	Holder, Amara				
O644	Kranendonk, Donald				
O587	Moore, Makoto				
E630.6	Parker, Preston				
O574	Quist, Ian				
O498	Rinck, Moses				
O801	Sample, Scott				
E630.2	Trapero, Kenneth				
O576	Velazquez, Rene				

- * PLEASE SHOW YOUR LUNCH BREAK – IF NO BREAK SHOWN IT MUST BE JUSTIFIED IN COMMENTS
- * WHEN CLAIMING HAZARD PAY YOU MUST INCLUDE THE SUPPRESSION ACTION BEING PERFORMED. THIS INCLUDES OPERATIONS WHICH DIRECTLY SUPPORT CONTROL OF FIRE (E.G., ACTIVITIES TO EXTINGUISH THE FIRE, FIREFIGHTING, GROUND SCOUTING, SPOT FIRE PATROLLING, SEARCH AND RESCUE OPERATIONS, AND BACKFIRING). – PER PMS902 – YELLOW BOOK

LOOKOUT and BEDROCK DEMOB LIST (09/21 TO 9/23)

If your Demob method of travel is by air, contact DMOB at (971) 762-8572 at least 72-hours in advance of your last work day.

Day Before Your Demob:

Contact FINANCE 24 hours prior to give them a heads-up you are departing and turn in any outstanding CTR/Shift Ticket. Make sure they are SIGNED. Confirm there is no missing financial documentation.

Day of Demob STEP 1:

Contact DMOB at 971-762-8572 or in person to obtain your Demob Check-Out Form (ICS 221) and to determine your specific next steps since we are pre-clearing personnel that do not have any supplies or communications equipment checked out.

STEP 2:

Have your vehicle "weed washed" at Lookout ICP; Hoodoo FOB or at Rock Quarry Staging Area.

STEP 3 (if directed by DMOB):

SUPPLY – see in person to return issued gear and leftover supplies

COMMUNICATIONS – see in person to return any communications equipment

GROUND SUPPORT – see in person to return incident rental vehicles, contractors to get an inspection, etc.

STEP 4:

Proceed to, or call, FINANCE at (661) 349-1530 at Lookout ICP or (971) 713-0359 at Hoodoo FOB to complete time closeout process and receive signed OF-288 or OF-286

STEP 5:

Return to Demob for final closeout

- Turn in any Unit Logs and Evaluations to Documentation Unit (Documentation Box).
- DMOB will verify check-out completion.
- Be prepared to address your actual departure date/time; your anticipated arrival date/time; and where you will be staying overnight if travel includes overnight stops.

LOOKOUT

RO #	Item Code	Name	RO #	Item Code	Name	
September 21			September 22			
DEMOBED BY OPS FOR 9/21			CREWS			
E-63	FEL1	MARK JONES	0900	C-76	CRWC	BLUE MOUNTAIN
E-69	WTS2	SUZANNE FINE	0930	C-88	CRW2	MARLETTE PEAK CREW
E-94	MBM1	ENGL	1000	C-94	CRW1	LA GRANDE IHC
E-227	MBM1	STATESIDE	1030	EQUIPMENT		
E-229	MBM1	MARK JONES	1100	O-232	MESU	HART RAT 5
E-235	FEL1	MKS	1130	O-233	MESU	H.A.R.T. (RAT 6)
E-271	FEL 1	SS LAND SERVICES	1200	O-234	RES	H.A.R.T. (RAT)
E-374	WTS1	M & D	1230	E-36	AMB2	FIRELINE (AMB 303)
E-454	MBM2	J & D	1300	E-265	ENG3	ICE FIRE
CREWS			E-272	FEL1	TJ'S MECHANICAL CUTTING	
C-93	CR2I	GRAYBACK 16B	E-336	HND2	TRAILS END	
C-74	CRWC	GRIZZLY FIREFIGHTERS -	E-352	LOGL	BRINKS BROTHERS	
EQUIPMENT			E-373	WTS2	SIREN	
E-358	LOGT	BRINK BROTHERS INC	E-512	CHP2	MARTY'S TREE SERVICE	
E-555	CHP1	MILLER TIMBER SERVICES	E-580	GWT3	ALLIED WATER SERVICE	
E-414	WEED	PACIFIC RIDGELINE	E-583	STK1	TRAILS END BBQ CO	
E-507	ENG6	R & R CONTRACTING	E-586	STK1	HIGH RIM CONTRACTING	
E-508	ENG6	EARTH INDUSTRIES	E-590	STK2	ALVERNAZ CLAY	
E-599	WEED	XTREME WILDLAND	E-634	PUP1	RENTAL - C-89	
OVERHEAD			E-3012	MBM2	JUSTIN PITTS TRUCKING	
O-564	DIVS	MALOLO, PILA	E-3013	MBM2	J3 CONTRACTING, INC	
O-574	DIVS	QUIST, IAN	OVERHEAD			
O-587	IMET	MOORE, MAKOTO	O-251	EMPF	WILDERNESS MEDIC 213	
O-590	ARCH	KIRKPATRICK, MOLLY	O-475	FFT2	KENNEDY, CAYLA	
O-604	SOFC	INGRAM, MATTHEW	O-572	DIVS	MUNOZ, MARK	
O-640	HECM	PALMER, NICKOLAS	O-625	EQPM	GRIFFIN, TODD	
O-642	HECM	WEAVER, ANTHOM	O-639	TFLD	STARR, MIKE	
O-648	SEC1	WILCOX, JOSEPH	O-659	FOBS	RUBIO, RICARDO	
O-650	TFLD	BEYUKA, JAZZ E	O-752	INCM	BATES, DENISE	
O-651	DIVS	COBURN, JEFFREY	O-769	DIVS	MESSENGER, ERIC	
O-655	HECM	BRADLEY, TYLER	O-777	SOF2	WILLIAMS, SETH	
O-764	HEQB	JENSEN, JEREMY	O-772	PIOT	ARRANT, WILLIAM	
			O-793	RCDM	POWERS, FRANKLIN	
			O-3094	TFLD	DAVIES, JUSTIN	

LOOKOUT and BEDROCK DEMOB LIST (09/21 TO 9/23)

RO #	Item Code	Name
September 23		
EQUIPMENT		
E-449	WTS2	JAMES KETCHUM
E-607	FORW	AXSUS
E-621	ENG3	GRAND RONDE 131

OVERHEAD		
O-647	SEC1	GROVER, OLIVER
O-566	SEC1	KOMAHCHEET, SHAWN
O-691	SEC2	ROLSING, DOUGLAS
O-658	FOBS	HARRISON, KATE
O-774	COMT	BRINKERHOFF, MARCUS
O-664	BCMG	WALLIS, RYAN A
O-667	EQPM	WALLACE, SETH P
O-677	EMPF	MINUTE MAN EMS
O-555	RADO	EDWARDS, LISA

BEDROCK

September 21		
EQUIPMENT		
E-41	HOSU	OUTBACK FRFIHTNG
E-473	WTS2	LEE ROY BELLOIR
E-468	EXC2	4-Q TIMBER

September 22		
EQUIPMENT		
E-481	CHP2	BIG BARK CHIPPER (BDRK)
E-528	LOGT	MARK JONES TRUCKING 3
OVERHEAD		
O-722	FMOD	FALLER MODULE - CUT RITE

September 23		
EQUIPMENT		
E-181	SKG2	ZEB'S TREE SERVICE (BDRK)
E-509	LOGT	MARK JONES TRUCKING (BDRK)
OVERHEAD		
O-726	REAF	MCCOY, SHANNON
O-727	REAF	HEIDENREICH, NOAH
O-728	HEQB	BOSSERT, OLIVER

Training Message

ARE YOU ORDERED AS A TRAINEE?

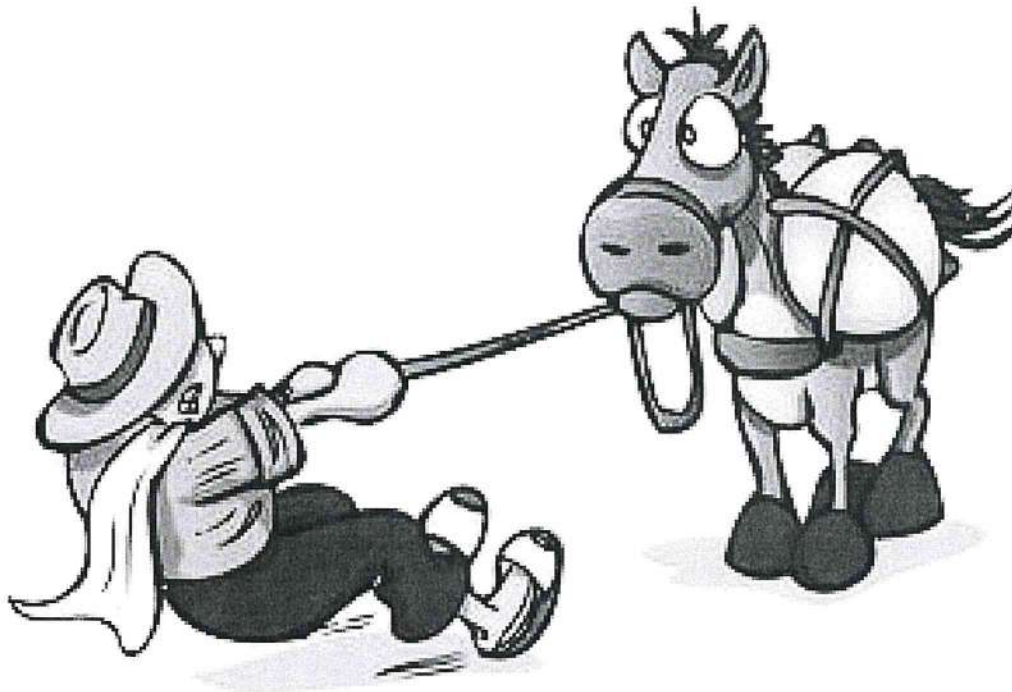
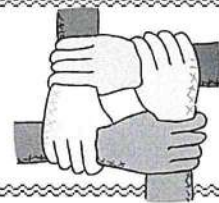
If you are ordered as a trainee, please sign up for the incident trainee program. You will be registered with the incident training specialist by filling out the questionnaire from the QR code in the IAP, please email scans or pictures of your incident qualification card and front cover of your task book to Team10TNSP@yahoo.com. During your time on this incident ensure you work with your trainer to complete the tasks you need evaluated if possible. Ensure your trainer evaluate your position task book tasks you are able to complete, and completes your position task book evaluation page as well as a performance evaluation (ICS-225). These forms are emailed to you once you complete the Trainee form. Upon completion of your assignment (***can be a couple days early to speed up demob***), please email, scans or pictures of your position task book evaluation and performance evaluation (ICS-225) to Team10TNSP@yahoo.com. These will be checked for accuracy, logged in the system, and sent on to your home unit training contact through email. I am working remotely. Please contact me if you have any further needs Team10TNSP@yahoo.com or phone 360-490-5355, I look forward to serving you.

Training Specialist
Neal Cox





Human Resource Message



HOW HEAVY IS YOUR LOAD ??

HOW BALANCED IS YOUR LOAD ??

Teresa Smergut HRSP 541-263-2283

Mike Baines HRSP 724-678-6147

Resource Advisor Message - Lookout Fire

Monte Kuk, Lead READ – Lookout & Bedrock Fire, 458-239-4080 monte.kuk@usda.gov

Divisions doing Suppression Repair please take a look around where you are working and pick up any trash at the end of your shift. Divisions doing mop up please remember to keep down logs as intact as possible - don't buck into pieces unless necessary. Weed wash if moving between Bedrock and Lookout fires if in weed areas.

Engineering and Roads

- Do not track heavy equipment on paved roads without the proper mitigations (ie. street grousers, rubber mats, etc.).
- If any road issues or concerns are encountered, please contact a REAF.

Dozer Lines

- Please work with Resource Advisors to clear proposed dozer lines.
- Please minimize the depth of the dozer line to the least extent required to meet objectives. Deep cuts are expensive, time consuming, and difficult to repair.

Heritage & Cultural

All cultural resources and human remains are protected by law. **Leave them in place- no collecting.** Call Resource Advisor if cultural resource like arrowheads, flakes/chips, or historic artifacts like cans & bottles are found and they will investigate.

Noxious Weeds

WEED WASH STATION:

- The Weed Wash stations are operational and located at Strubb Flat, Kickbrush & Hoodoo
- Please use the weed wash upon arrival at the incident, and during demob
- Avoid the following weed: Slender False Brome and Spotted Knapweed

REDUCE THE SPREAD: Brush off packs & boots (especially laces) before leaving fire camp.



Tree Felling Operations

Please keep equipment on road surface to the greatest extent possible

Log Processing:

- Utilize existing openings and landings for decking, ditch lines/roadside is acceptable
- Process trees down to a 6" top (small end diameter). Use remaining for firewood logs, rehab, or chip
- Preferred Log Lengths (maximize length whenever possible): 41 foot Max – 17 foot Min
- 2' increments below 41', keeping logs as long as possible (41', 39', 37', etc....) Process unburnt trees on the unburnt side of the fireline. Process burnt trees on the burnt side of the fireline.
- Keep processed slash and tops out of decks and off roads
- If possible, sort decks by species and log lengths

Snags and Hazard Trees:

Old growth is a key value. Limit snagging to operational needs & limit bucking to retain long bowls of large felled trees or snags.

Water Quality and Fisheries

AERIAL DIPPING:

- Aerial dipping should only occur at approved dip sites. Blue River Res. has a use restriction to facilitate dipping. Check with your REAF for approval of dipping sites.
- Be sure to wash buckets when new aerial resources arrive at the fire, when switching dips sites, or when returning to the fire from off forest.

WATER DRAFTING:

- Limited Drafting is available at the bridge across Lookout Creek on the 1506 road in section 28. Check with the REAF for additional drafting locations as needed.
- Utilize fish screens when in fish bearing waterbodies (REAFs have these available).
- Maintain sufficient flow as to not dewater downstream reaches
- Utilize splash pans and absorbent pads. REAFs will assist if given the location.

GROUND BASED RETARDANT APPLICATION:

- Provide a 75 foot buffer from riparian areas with live water when applying ground based retardant.

CHIPPING STANDARDS:

- Provide a 30- foot buffer of no chipping at water crossings or culverts.
- Do not place chips into road ditch.
- Do not chip onto a steep slope where chips will slide back into the ditch.
- Broadcast chipped material, ensuring that chips are no more than 4" deep.

Pete's Lake - -READ MESSAGE

Shaded Fuel Break Specifications

- Treat off of road road shoulder as directed, leaving a minimum of one tree every 20 feet spacing

Preferred leave tree species (from most desired leave to least desired):

- **Whitebark pine – do not cut**
 - **Western White Pine – do not cut**
 - Spruce
 - Mountain Hemlock
 - Douglas-fir
 - Ponderosa Pine
 - White Fir
 - Lodgepole Pine
- READs**
Jason Gritzner 541-408-1846
Jason Wilcox 503-319-2408
- Preferred log length to a minimum 5 inch top:
 - 16' 6", 25', 29', 33'
 - 8 in. minimum trees to deck
 - **Max Cut 17 in. DBH**
 - Keep slash in landings a minimum 25 feet from dripline of live standing trees.
 - Log Landings size approximately 100ft. by 100 ft.; consult with READ on locations.
 - Tracked equipment no activity within 50 feet of live water.
 - Tracked equipment no activity within 30 feet of dry stream.
 - Avoid removing trees that have signs/blazes on them as much as possible

Fuels Treatment Specifications around Recreation Sites (specified by READs)

- Thin trees less than 4 in. DBH as directed
- Avoid removing trees that have signs/blazes on them as much as possible
- 10 foot spacing between leave trees for 20 feet off roads
- 20 foot spacing between leave trees interior to 20 feet off roads
- Cut lodgepole pine first
- Flush cut stumps within 50 feet from Highway 46
- Do not leave sharp stumps in recreation area
- Retain trees along streams (don't cut any trees within 20 feet of wet or dry stream banks, unless deemed hazard trees or otherwise directed).

Flagging Guide

Blue: ATP (Area to Protect)...refer to flags for written specifications

Orange: End Haul Site location (slash, logs, chips, etc.)

Chipping Specifications

- Spread chipped material to a max depth of 3 inches unless otherwise directed to pile.

HELICOPTER EXTRACTION OPERATIONS

The intent of helicopter insertion/extraction operations is to facilitate the movement of personnel to and from inaccessible areas. These operations are not meant to be a medical transport resource; life flight and ground transportation should always be ordered in addition to the extraction aircraft and crew.

ORDERING:

- On-scene EMT and/or Incident within Incident IC determines that an extraction helicopter is needed and places the order through the pre-established procedures:
 - Division Supervisor
 - Incident Communications
 - Dispatch Center
- When ordering extraction aircraft provide the following information:
 - Location (Lat/Long) of patient
 - Known Hazards
 - Wind Speed and Direction
 - Terrain
 - Incident Updates

SITE SELECTION:

- The helicopter crew will confirm the extraction location when they arrive on scene. However, a general rule is any clearing that is 10'x10' with visible sight lines to the sky is a suitable extraction site.
- If the terrain is steep, excavating a platform or shelf can make it easier for patient packaging.

QR Code-Short-haul Site Selection Video



CONSIDERATIONS:

- Short-haul and hoist are safe and efficient operations for extracting injured personnel of any severity including "Green" patients.
- Ensure area is clear of non-essential items, hazards, and personnel.
- Rotor wash may affect overhead hazards and blowing dust/debris can create brown out conditions or influence fire behavior.
- Aerial Supervision is valuable for coordinating aviation medevac/extraction missions and should be ordered if available and not currently present.
- The aircrew will make the final assessment of the mission. Always have a contingency plan in case a helicopter cannot complete the request.

DEFINITIONS:

Rescue Hoist: A cable winching device mounted to the helicopter that can lower/raise persons attached to a cable.

- Common cable lengths are 250-300 feet.

Short-haul: To insert or extract one or more persons suspended on a fixed line beneath a helicopter.

- Common short-haul line lengths are 100, 150, and 250 feet. The lines can also be connected for a longer line if the situation requires it.

Incident/Project Name		Operational Period						
LOOKOUT/BEDROCK		Date/Time:	09/21 - 09/22 0700-0700					
Ambulance Services								
Name	Complete Address	Phone & EMS Frequency	Advanced Life Support (ALS) Yes No					
AMBO 308 (Lookout Transport)	Blue River Reservoir	Command Channel	X					
Bend Fire Department	1212 SW Simpson Ave, Bend, OR 97702	911 / 541-693-6911	X					
Sister-Camp Sherman R.F.P.D	301 South Elm Street Sisters, OR		X					
Eugene/Springfield Fire (Lookout Transport)	1705 W. 2 nd Ave Eugene, OR	Lane County 911	X					
Oakridge Fire (Bedrock Transport)	47592 Hwy 58 Oakridge, OR	Lane County 911	X					
Air Ambulance Services								
Name	Phone	Type of Aircraft & Capability						
Life Flight – Eugene or Redmond	Order through Lookout Comms 800-232-0911	Critical Care Team of Paramedics and RN NVG, Freq: VMED 29						
Airlink - Bend	Order through Lookout Comms 800-353-0497	Critical Care Team of Paramedics and RN NVG, Freq: VMED 29						
Teton Short Haul	Ordered by Lookout Comms	ALS, Short Haul, not-dedicated to the incident – Daytime use only						
Hospitals								
Name Complete Address	GPS Datum – WGS 84 Coordinate Standard Degrees Decimal Minutes		Travel Time Air Gnd		Phone	Helipad Yes No		Level of Care Facility
	Lat:	Long:	FAA					
PeaceHealth Sacred Heart Medical Center 333 Riverbend Drive Springfield, OR 97477	44° 04.876' N	123° 01.588' W	10 min	20 min	541-222-6931	X		Level 2 Trauma
	OG64							
St Charles Bend 2500 NW Neff Rd Bend, OR 97701	44°04.1023'N	121°16.0537'W	45 mins	2 hours 20 min	541-382-4321	X		Level 2 Trauma
	54OR							
Legacy Emanuel Hospital 3001 N Gantenbein Ave Portland, OR 97227	45°32.6679'N	122°40.2933'W	45 mins	2 hours	(406) 329-5635	X		Level 1 Trauma Burn Center
	7OR5							
OHSU Hospital 3181 SW Sam Jackson Park Rd, Portland, OR 97239	45°29.9498'N	114°29.7 W	45 mins	2 hours	ER (503) 494-7550	X		Level 1 Trauma
	80ID							

MEDICAL PLAN (ICS 206 WF)
Controlled Unclassified Information//Basic

Division Branch Group	Area Location Capability		
ICP	EMS Personnel:	Dave O'Brien MEDL 360-624-8023 Magenta Widner MEDL(t) 360-410-5433 Mari Bottoms MEDL(t) 541-403-1703 Ryan Herrera MEDL 253-297-0537 AMBO 310 - Ian Morse (EMPF) 423-596-1335 AMBO 304 - Russell Long-Thompson (EMPF) 514-965-1183	
	Equipment Available on Scene:	ALS Ambulance, Medical Yurt w/ OTC Meds	
	Medical Emergency Channel:	Lookout Communications	
	Approved Helispot:	N/A	
BEDROCK NORTH REPAIR	EMS Personnel:	REMS 43 - Kamron Greer (EMPF) 832-585-6044 AMBO 15 - Lucy Cummins (EMPF) 567-274-8888 MEDIC TEAM 38 - Branton Thompson (EMPF) 479-957-8580	
	Equipment Available on Scene:	ALS Ambulance, UTV w/ Technical Rescue, ALS w/ UTV	
	Medical Emergency Channel:	Bedrock Communications	
	Approved Helispot:	H-2, H-5, Cascara Camp	
BEDROCK SOUTH REPAIR	EMS Personnel:	AMBO 10 - Andre Martoni (EMPF) 612-707-8496 EMT 119 - Nadia Jenman (EMTF) 816-666-0534	
	Equipment Available on Scene:	ALS Ambulance, ALS w/ UTV	
	Medical Emergency Channel:	Bedrock Communications	
	Approved Helispot:	H-5, H-10, H-32	
BRANCH I DIV A/C	EMS Personnel:	AMBO 308 - Ali Hammoudeh (EMPF) 973-968-9455 MEDIC 222 - Ritvik Chakraborty (EMPF) 678-308-3264 EMT 122 - Ethan Jarrett (EMTF) 479-312-0972	
	Equipment Available on Scene:	ALS Ambulance (Transport Only)	
	Medical Emergency Channel:	Lookout Communications	
	Approved Helispot:	H-1, H-2, H-20, H-30, H-40	
BRANCH I DIV H	EMS Personnel:	RAT 6 - Mike Planeta (EMTF) 623-332-4262 AMBO 303 - Kyle Mead (EMPF) 561-317-996 MEDIC 228 - Kyle Kemerer (EMPF) 650-868-2803 MEDIC 229 - Nathan Davis (EMPF) 816-844-5859	
	Equipment Available on Scene:	ALS w/ UTV, ALS Ambulance	
	Medical Emergency Channel:	Lookout Communications	
	Approved Helispot:	H-2, H-30, H-40	
BRANCH I DIV L	EMS Personnel:	RAT 7 - Raul Ruiz (EMPF) 915-504-8955 AMBO 301 - Alexis Wasden (EMPF) 385-895-7738 MEDIC 226 - Steve McDowell (EMPF) 208-949-7936 MEDIC 221 - Jacob Smith (EMPF) 808-829-9623 EMT 108 - Stephan Blaskovics (AEMF) 757-615-8212	
	Equipment Available on Scene:	ALS Ambulance, UTV w/ Technical Rescue	
	Medical Emergency Channel:	Lookout Communications	
	Approved Helispot:	H-40	

MEDICAL PLAN (ICS 206 WF)
Controlled Unclassified Information//Basic

BRANCH V DIV P	EMS Personnel:	RAT 5 - Jeff Farris (EMPF) 623-826-8258 AMBO 306 - Stephen Spigelman (EMPF) 929-248-0242 MEDIC 224 - Alexander Pizzonia (EMPF) 413-446-8315 MEDIC 213 - Breianah Riojas-Purinton (EMPF) 602-931-3448 EMT 123 - Ian Roy (EMTF) 707-508-9620 EMT 120 - Trayse Riggle (EMTF) 541-805-5585	
	Equipment Available on Scene:	ALS Ambulance, UTV w/ Technical Rescue	
	Medical Emergency Channel:	Lookout Communications	
	Approved Helispot:	H-1, H-41	
BRANCH V DIV T	EMS Personnel:	MEDIC 223 - Benjamin Sholl (EMPF) 757-773-4688 EMT 121 - Lacy Singhose (EMTF) 541-589-4175	
	Equipment Available on Scene:	ALS	
	Medical Emergency Channel:	Lookout Communications	
	Approved Helispot:	H-1	
BRANCH V HORSE CREEK POTHOLE	EMS Personnel:	RAT 4 - Rick Bostian (EMPF) 479-422-0462 AMBO 309 - Kyle Schulz (EMPF) 720-810-1776 MEDIC 231 - Luke Eversole (EMPF) 480-326-5676 EMT 124 - Daniel Hilberg (EMTF) 951-541-3351	
	Equipment Available on Scene:	UTV w/ Technical Rescue, ALS Ambulance	
	Medical Emergency Channel:	Lookout Communications	
	Approved Helispot:	H-1	
PETE'S LAKE	EMS Personnel:	REMS 1 - Sage Stewart (EMTF) 479-806-0860 AMB 311- Sam Nakanishi (EMPF) 440-596-2043 MEDIC 227 - Jes Tews (EMPF) 775-745-4012	
	Equipment Available on Scene:	ALS w/ OTC Meds, ALS w/UTV, technical rope rescue	
	Medical Emergency Channel:	Lookout Communications	
	Approved Helispot:	H-3	
HOODOO FOB	EMS Personnel:	MEDL(t) - Necole Ontko (EMPF) 541-815-6365 AMBO 307 - Jeffrey Kwiecien (EMPF) 570-394-2707	
	Equipment Available on Scene:	ALS w/ OTC Meds	
	Medical Emergency Channel:	Lookout Communications	
	Approved Helispot:	N/A	
SUN RIVER HELIBASE	EMS Personnel:	MEDIC 225 - Josh Puskar (EMPF) 440-796-6903	
	Equipment Available on Scene:	ALS w/ OTC Meds	
	Medical Emergency Channel:	Lookout Communications	
	Approved Helispot:	Sun River Helibase	
Prepared By (Med Unit Leader)	Date/Time	Reviewed By (Safety Officer)	Date/Time
Dave O'Brien MEDL Magenta Widner MEDL(t)	09/20/2023 - 2000	<i>Marshall Brown</i> SOF1	09/20/2023 - 2000



EMERGENCY PLAN INCIDENT WITHIN AN INCIDENT

ON SCENE INCIDENT COMMANDER

In the event of an accident or medical incident of any size, your primary responsibility is to ENSURE that the victim(s) receive prompt and effective Triage, Treatment, Extrication and Transport.

- **ENSURE THE MEDICAL INCIDENT REPORT IN THE INCIDENT ACTION PLAN IS BEING USED AND FOLLOWED- *IF DETERMINED TO BE A GREEN THAT REQUIRES TRANSPORT BACK TO CAMP OR TO A MEDICAL FACILITY, DO NOT DECLARE EMERGENCY TRAFFIC AND ONLY COMPLETE LINE 1-4 ON MEDICAL INCIDENT REPORT*.**
- Conduct size-up of the incident nature of accident, number type of resources involved, latitude and longitude location (DD°MMM.MM format): notify incident communications center and supervisor, request assistance as needed.
- Order and coordinate medical and support response to the accident.
- Evaluate special needs (law enforcement, haz mat, etc.).
- Clear the command frequency if medical emergency, coordinate with incident communications and air attack for air medical transportation needs.
- Preserve and photograph the scene for accident investigation.
- Remain aware of surroundings and the status of the main incident (delegate personnel to monitor the main fire) to ensure safety of medical treatment personnel.
- Until relieved, supervise and manage all personnel involved at the incident scene.

MEDICAL PLAN (ICS 206 WF)

Controlled Unclassified Information//Basic

Medical Incident Report					
<p>FOR A NON-EMERGENCY INCIDENT, WORK THROUGH CHAIN OF COMMAND TO REPORT AND TRANSPORT INJURED PERSONNEL AS NECESSARY.</p> <p>FOR A MEDICAL EMERGENCY: IDENTIFY ON-SCENE INCIDENT COMMANDER BY NAME AND POSITION AND ANNOUNCE "MEDICAL EMERGENCY" TO INITIATE RESPONSE FROM IMT COMMUNICATIONS/DISPATCH.</p>					
<p>Use the following items to communicate situation to communications/dispatch.</p>					
<p>1. CONTACT COMMUNICATIONS / DISPATCH (Verify correct frequency prior to starting report) <i>Ex: "Communications, Div. Alpha. Stand-by for Emergency Traffic."</i></p> <p>2. INCIDENT STATUS: Provide incident summary (including number of patients) and command structure. <i>Ex: "Communications, I have a Red priority patient, unconscious, struck by a falling tree. Requesting air ambulance to Forest Road 1 at (Lat./Long.) This will be the Trout Meadow Medical, IC is TFLD Jones. EMT Smith is providing medical care."</i></p>					
Severity of Emergency / Transport Priority	<input type="checkbox"/> RED / PRIORITY 1 Life or limb threatening injury or illness. Evacuation need is IMMEDIATE <i>Ex: Unconscious, difficulty breathing, bleeding severely, 2° – 3° burns more than 4 palm sizes, heat stroke, disoriented.</i> <input type="checkbox"/> YELLOW / PRIORITY 2 Serious Injury or illness. Evacuation may be DELAYED if necessary. <i>Ex: Significant trauma, unable to walk, 2° – 3° burns not more than 1-3 palm sizes.</i> <input type="checkbox"/> GREEN / PRIORITY 3 Minor Injury or illness. Non-Emergency transport <i>Ex: Sprains, strains, minor heat-related illness.</i>				
Nature of Injury or Illness & Mechanism of Injury			<i>Brief Summary of Injury or Illness (Ex: Unconscious, Struck by Falling Tree)</i>		
Evacuation Request			<i>Air Ambulance / Short Haul/Hoist Ground Ambulance / Other</i>		
Patient Location			<i>Descriptive Location & Lat. / Long. (WGS84)</i>		
Incident Name			<i>Geographic Name + Medical (Ex: Trout Meadow Medical)</i>		
On-Scene Incident Commander			<i>Name of on-scene IC of Incident within an Incident (Ex: TFLD Jones)</i>		
Patient Care			<i>Name of Care Provider (Ex: EMT Smith)</i>		
<p>3. INITIAL PATIENT ASSESSMENT: Complete this section for each patient as applicable (start with the most severe patient)</p>					
Patient Assessment: See IRPG PAGE 106					
Treatment:					
<p>4. EVACUATION PLAN:</p>					
Evacuation Location (if different): (Descriptive Location (drop point, intersection, etc.) or Lat. / Long.) Patient's ETA to Evacuation Location:					
Helispot / Extraction Site Size and Hazards:					
<p>5. ADDITIONAL RESOURCES / EQUIPMENT NEEDS:</p>					
<i>Example: Paramedic/EMT, crews, immobilization devices, AED, oxygen, trauma bag, IV/fluid(s), splints, rope rescue, wheeled litter, HAZMAT, extrication</i>					
<p>6. COMMUNICATIONS: Identify State Air/Ground EMS Frequencies and Hospital Contacts as applicable</p>					
Function	Channel Name/Number	Receive (RX)	Tone/NAC *	Transmit (TX)	Tone/NAC *
COMMAND					
AIR-TO-GRND					
TACTICAL					
<p>7. CONTINGENCY: <u>Considerations:</u> If primary options fail, what actions can be implemented in conjunction with primary evacuation method? Be thinking ahead..</p>					
<p>8. ADDITIONAL INFORMATION: Updates/Changes, etc.</p>					
<p>REMEMBER: Confirm ETAs of resources ordered. Act according to your level of training. Be Alert. Keep Calm. Think Clearly. Act Decisively.</p>					