





<b>ICS Form 202 INCIDENT OBJECTIVES</b>	<b>1. INCIDENT NAME</b> Bedrock / Lookout / Pothole / Horse Creek / Pete's Lake	<b>2. DATE</b> 09/24/23	<b>3. TIME</b> 1900
<b>4. OPERATIONAL PERIOD (DATE/TIME)</b> 09/25/2023 0700 – 2000			
<b>5. GENERAL CONTROL OBJECTIVES FOR THE INCIDENT (INCLUDE ALTERNATIVES)</b> <b>Strategic Framework</b> Implement the full spectrum of suppression strategies that include: direct perimeter control on Pothole and Horse Creek Fires; the Lookout Fire will use a combination of direct, indirect, and monitor strategies; the Bedrock Fire will use monitor and control; and the Pete's Lake will be confinement, monitor, and point protection. Values of concern include human safety, communities, private property, commercial timber land, family timber land, Eugene Water and Electric Board Dam, Hwy 46, Hwy 126, Elk Lake Resort, and other identified infrastructure. Apply tactics that offer the highest probability of success to meet intent and objectives while considering risk to personnel. <b>Leaders Intent</b> <ul style="list-style-type: none"> <li>Human Factors: We will ensure that all personnel be treated with dignity and respect. We have zero tolerance for harassment, alcohol, or drug use. We will engage in all work assignments with a high degree of integrity, professionalism and provide excellent customer service to our responders, our agencies and our public.</li> <li>Safety &amp; Risk Management: Firefighter, responder, aviator and public safety will be addressed through hazard identification, assessment and where practicable, mitigated.</li> <li>Operations: Prioritize missions that consider risk benefit trade-offs, provide higher probability of success given on scene and expected resource capability. We will consistently evaluate environmental factors and timing of implementing strategies.</li> <li>Agency Coordination: We will keep the Willamette National Forest, Bureau of Land Management and Oregon Department of Forestry informed of significant accomplishments, foreseen challenges and address concerns.</li> <li>Communication: We are committed to and will coordinate with the local community to enhance key partnerships and relationships by effectively ensuring transparent, timely and accurate communication is shared.</li> <li>Fiscal Accountability: As a responsibility and duty to the agencies and the public, we will monitor cost effective methods for accomplishing incident objectives and overall management of the incidents.</li> </ul> <b>Management Objectives</b> <ol style="list-style-type: none"> <li>Provide for the safety of firefighters, aviators and public through utilization of strategic and deliberate risk assessment. Use a deliberate risk process that might include Incident Strategic Alignment Process ISAP to evaluate operational hazards, probabilities of success and consequences of failure when designing operational missions.</li> <li>Limit impacts to communities at risk, Elk Lake Resort, private land including industrial timber, family forest lands, recreational areas, Eugene Water and Electric Board Dam, H.J. Andrews experimental forest, Hwys 46 &amp; 126, and other identified values of risk.</li> <li>Maintain and enhance relationships with the public we serve, the agencies we are assisting and the responders that we are responsible for supporting.</li> <li>Provide initial attack support to all lands in the designated TFR's and to those outside of TFR upon request.</li> <li>Adhere to the control objectives, task/purpose/end state in each Division Assignment (204) to include mitigating and repairing adverse effects to resources resulting from fire suppression activities. Approved suppression repair plans include specific actions needed to stabilize the adverse effects in the fire areas.</li> </ol>			
<b>6. WEATHER FORECAST FOR OPERATIONAL PERIOD</b> See Attached.		<b>7. GENERAL SAFETY MESSAGE</b> See Attached.	
<b>8. ATTACHMENTS</b> Organization List (ICS 203)                      Medical Plan (ICS 206)                      Safety Message Weather Forecast                                  Communications Plan (ICS 205)                      Assignments (ICS 204) Fire Behavior Forecast                          ICS 214                                                          Air Operations Summary (ICS 220)			
<b>9. PREPARED BY</b> 		<b>10. APPROVED BY (Incident Commander )</b> 	



ORGANIZATION ASSIGNMENT LIST	
1. Incident Name	
<b>Bedrock / Lookout / Horse Creek / Pothole / Pete's Lake</b>	
2. Date 09/24/2023	3. Time 1800
4. Operational Period 09/25/23 0700 – 2000	
<b>5. Incident Commander and Staff</b>	
Position	Name
Incident Commander	Jason Loomis / John Szulc (t) / Chris Hutsell (t)
Safety Officer	Marshall Brown / Rob Poyner / Mark Munns
Information Officer	Chris Barth / Mike Johnson / Kale Casey / Jacob Welsh (t)
Liaison Officer	Don Turner / Paul Strong / Kristen Bonanno (t)
Human Resources	Teresa Smergut / Mike Baines
Medical Unit Leader	Dave O'Brien / Magenta Widner (t) / Mari Bottoms (t)

6. Agency Representative	
Agency	Name
USFS AA	WIL - Darren Cross / Heath Perrine / Allen Hambrick / Sarah Clawson / Rebecca Brooke (t) DES – Kevin Larkin / Robert Gentry
BAER Team	John Chatel / Wendy Peterman (t)
ODF AA	Chris Cline
ODF Agency Rep	John Flannigan / Craig Pettinger
BLM AA	Dennis Teitzel
Lane County Captain	JD Mann (Bedrock) / Cliff Harrold (Lookout)
Giustina Land and Timber	Kenny Rose
Fruit Growers	Jim Crawford
Campbell Group	Jim Hunt
Weyerhaeuser Group	Albert Kastle / Jeanne Olson
HJ Andrews Exper. Forest	Mark Schultz
Lead READ	James Rudisill

7. Planning Section	
Position	Name
Chief	Brenda Hallmark / Monica Ramirez (t) / Alyssa Dawson (t)
SITL	Matt Provencher / Jason Thivener / Emilie Bedard (t)
RESL	Nicole LaGioia
GISS	Mike Cibicki / Lexi Holder / William Otto / Chantelle Delay / Bryant Mecklem (t) / Tiffany Manger (t)
DOCL	Paula Knapp
DEMOB	Brenda Bramwell
SCKN	Dina Peek
FBAN	Drew Taylor
IMET	Ryan Walbrun / Brian Adams (t)
LTAN	Joe Hernandez (t)
TNSP	Neal Cox

8. Logistic Section	
Position	Name
Chief	Nick Swagger / Kent Koeller / Tony Mule (t)
Supply Unit	Jaime Chopp / Dave Cooper
Facilities Unit	Cliff Piper / Russel Hovey
Food Unit	Debra Foote / Jenny Martin
COML	Keith Brown

Ground Support	Carlos Velez / Duane Chatham / Michael Howard / Jeffrey Burdine (t)
ITSS	Jim Grace / Flint Buchman / Jeff Hixon
SECM	Tyler Smith
<b>9. Operations Section</b>	
Lead Ops	Sonny Caldwell
Field Ops	Terry Walter / Dan Trapanese (t)
Planning Ops	Brandon Lewis / Jacob Gear (t)
<b>a. Branch Bedrock</b>	
Branch Director	Chris Lundgren / Ken Foss (t)
Division North Repair	Wes Wentworth / Meg Fluharty (t)
Division South Repair	Ted Piehl / Shane Orser (t)
<b>b. Branch I</b>	
Branch Director	Sam Tacchini / Josh Verellen (t)
Division A / C	Eric Kiehn / Nathan Basford (t)
Division H	Zane Brown / Brian Bradbury (t)
Division L	Darek Pepple / Colbey Richmond (t)
<b>c. Branch V</b>	
Branch Director	Thom Taylor / Brian Bates (t)
Division P	Thomas Goheen
Division T	Cam Chambers / Kip Van DeWater (t)
Division Horse Creek / Pothole	Amy McClave / Cody St. Clair (t)
<b>d. Equipment Group</b>	
Division	Thad Niebel / Gary Crombie (t)
<b>e. Lookout Staging</b>	
Staging Manager	Paul Ryan
<b>f. Pete's Lake</b>	
Field Ops	Reggie Bray
Division	James Honanie / Chris Burford (t)
<b>g. Air Operations Branch</b>	
Branch Director	Cory Dolberry / Kyle Stump (t)
ASGS	Scully / Jason Books / Ben Crittenden

10. Finance Section	
Position	Name
Chief	Mariah Morris - Titus / Glenda Lindsay
Time Unit Leader	Linzy Scott / Eric Goddard (t)
Cost Unit Leader	Christy Graham
Equipment Time	Cynthia Sperling / Maria Trujillo / Dorothy Myers / William Devore / Miriam Hubbard (t)
Personnel Time	Shonni Nelson / Ana Bacoch (t) / JoAnne Gomez / Victoria Ramirez
Comp/Claims	Jessica McAloon / Amy Kenny (t)
Procurement	Juanita Dickson / Luis Carrillo (t)
ICPI	Doug Simler
COPA	Sonia Torres

Prepared by (Resource Unit Leader)  
Nicole LaGioia



# Fire Weather Forecast

## Monday September 25, 2023



**FORECAST NO:** 62      **FIRE:** Bedrock/Lookout/Horse Creek/  
Pothole/Pete's Lake

**PREDICTION FOR:** Monday, Sep 25, 2023      **UNIT:** Willamette N.F.

**ISSUED:** 2000, Sep 24, 2023      **Incident Meteorologist:** Brian Adams (T)

- **DISCUSSION:** A cold front brings more moderate rainfall to the region with slight (20%) chances for thunderstorms this morning and afternoon. Maximum rainfall rates of 0.25-0.50"/hr in any heavy downpours. Gusty south winds will remain relatively strong through this evening, especially along the mountain ridgelines. Additional rain chances and cool temperatures also expected to continue through Tuesday.

### MONDAY:

- **WEATHER:** Cloudy, 90% chance of rain after 0600, 20% chance of thunderstorms in the morning and afternoon. Total rainfall through 2000 on Monday of 0.25-0.75", localized amounts up to 1.25" where any thunderstorms and heavier downpours occur.
- **WIND (20 FT):**
  - o **Lookout:** Valleys/Lwr Slopes: South 3-7 mph through 1000, then south 7-11 mph with gusts to 20 mph. Ridges/Upper Slopes: S 10-15 mph through 1000 then S 13-18 mph with gusts 25 to 30 mph.
  - o **Petes Lake:** SE 8-13 mph through 1200, then S 15-20 mph with gusts 25-30 mph through 2000.
- **MAX TEMPERATURES:** 54-60 valleys and mid-slopes, 49-55 ridges and Pete's Lake.
- **MIN RH:**
  - o **Lookout:** 65-75%      **Petes Lake:** 65-75%
- **INVERSION:** Weak, but persisting through the day. **MID HAINES:** 2.

### MONDAY NIGHT:

- **WEATHER:** Cloudy. 60% chance of scattered showers overnight, most likely amounts 0.10-0.20".
- **WIND (20 FT):**
  - o **Lookout:** Valleys/Lwr Slopes: South 5-9 mph. Ridges/Upr Slopes: S 9-14 mph with gusts to 20 mph.
  - o **Petes Lake:** South-southwest 10-15 mph with gusts to 25 mph.
- **MIN TEMPERATURES:** **Lookout:** 42-48. **Petes Lake:** 40-45
- **MAX RH:**
  - o **Lookout:** 90-100%      **Petes Lake:** 90-100%

### TUESDAY:

- **WEATHER:** Cloudy. 80-90% chance of scattered rain during the day, totals of 0.25-0.50" expected.
- **WIND (20 FT):**
  - o **Lookout:** Valleys/Lwr Slopes: Downslope 2-5, then southwest 5-10 mph with gusts to 15 mph. Ridges/Upper Slopes: SW 10-15 with gusts 20-25 mph.
  - o **Petes Lake:** SW 10-15 with gusts 20-25 mph.
- **MAX TEMPERATURES:** 54-60 valleys and mid-slopes, 47-53 ridges and Pete's Lake.
- **MIN RH:**
  - o **Lookout:** 70-80%      **Petes Lake:** 70-80%
- **INVERSION:** Weak, but persisting through the day. **MID HAINES:** 2.

**Extended outlook:** Wednesday through Saturday: A Pacific storm system maintains chances for rain through much of this week. Winds will be onshore through much of the week along with cooler temperatures and high humidity. Rain chances begin to diminish this coming weekend with upper level high pressure expected to start setting in.

**Sunrise:** 07:03 PDT      **Sunset:** 19:06 PDT



## FIRE BEHAVIOR FORECAST

<b>FORECAST NUMBER:</b> 44	<b>TYPE OF FIRE:</b> Wildfire
<b>FIRE NAME:</b> Lookout/Bedrock/Horse Creek/Pothole/Pete's Lake	<b>OPERATIONAL PERIOD:</b> 09/25/2023
<b>DATE ISSUED:</b> 09/24/2023	<b>TIME ISSUED:</b> 2000 Hours
<b>UNIT:</b> OR-WIF, Willamette National Forest	<b>SIGNED:</b> ANDREW TAYLOR <small>Digitally signed by ANDREW TAYLOR Date: 2023.09.24 18:19:08 -0700</small>

### INPUTS

**WEATHER SUMMARY:** *Cooling and wetting weather returns bringing good chances of measurable precipitation to all of the fires over the next several days.*

**FUELS:**

Continued Cooler and wetter weather remains over the fire area resulting in higher daytime RH values, cooler temperatures and chances of rain throughout the day will continue to moderate fire behavior on all fires. Continued storms move into the area bringing chances of more substantial precipitation Monday and Tuesday.

### OUTPUTS

**FIRE BEHAVIOR GENERAL:**

Dead and down fuel loading in timber will be the primary burnable fuels on any of the fires. Primary activity will continue to be smoldering in duff and heavy down and dead fuels, with some areas of heat receiving enough weather to be extinguished this coming week.



**Based on Peak Wx and Fuels conditions:**

- Fine Dead Fuel Moisture- Saturated beyond moisture of extinction.
- Probability of Ignition 0-10.
- **Moisture of extinction:** The moisture content of a specific fuel type above which a fire will not propagate itself.

**FIRE BEHAVIOR SPECIFIC:**

**Pete's Lake and Lookout Fire:** Continued creeping under thicker canopies until fuels receive precipitation at ground level. Smoldering of dead and down fuels and duff. Heat will start to be extinguished. No fire growth expected.

**Bedrock, Pothole, and Horse Creek:** Continued consumption and smoldering of interior pockets with heat becoming extinguished throughout the next few days. Heat will start to be extinguished. No growth predicted.

**IA** – With potential thunderstorms in the morning hours, new starts are possible, but they will present low resistance to control with current weather conditions.

**AIR OPERATIONS:**

Weather will limit the needs for air operations over the next several days.

### SAFETY

Winds will increase drastically, over the next couple of days increasing the chances of trees to fall in and outside of the fire. Stay aware of other rolling hazards as the ground becomes saturated and roots and other fuels have burnt out.



**Division/Group Assignment List (ICS 204 WF)**  
**Controlled Unclassified Information//Basic**

<b>1. Incident Name:</b>			<b>3.</b>			
BEDROCK LOOKOUT			<b>Branch:</b>		<b>Division/Group</b>	
<b>2. Operational Period:</b> DAY			BEDROCK		NORTH REPAIR	
Date/Time From: 09/25/2023 0700 MON		Date/Time To: 09/25/2023 2000 MON				
<b>4. Operations Personnel</b>						
<b>FIELD OPS</b>		TERRY WALTER DAN TRAPANESE (T)		<b>BRANCH DIRECTOR</b> CHRIS LUNDGREN KEN FOSS (T)		
<b>AIR ATTACK SUPERVISOR</b>				<b>DIVISION/GROUP SUPERVISOR</b> WES WENTWORTH (LWD 9/27) MEG FLUHARTY (LWD 10/1) (T)		
<b>5. Resources Assigned this Period</b>						
Strike Team / Task Force / Resource Designator		LWD	Leader	Number Persons	Drop Off PT./Time	Pick Up PT./Time
TFLD O-730		09/25	QUINLAN ANDERSON	1	LOOKOUT ICP/0700	LOOKOUT ICP/2000
TFLD (T) O-596		09/26	KELLY SENSEQUA	1	LOOKOUT ICP/0700	LOOKOUT ICP/2000
TFLD (T) O-910		10/02	CONNOR ALLEN	1	LOOKOUT ICP/0700	LOOKOUT ICP/2000
HEQB O-732		09/27	JAIME MARISCAL	1	LOOKOUT ICP/0700	LOOKOUT ICP/2000
HEQB (T) O-812		10/01	JAYDEN CHYNOWETH	1	LOOKOUT ICP/0700	LOOKOUT ICP/2000
HEQB (T) O-814		09/27	JOSH VIERRIA	1	LOOKOUT ICP/0700	LOOKOUT ICP/2000
HC2 C-81 1ST CHOICE CONTRACTING (BDRK)		09/29	ENRIQUE MANZO	20	LOOKOUT ICP/0700	LOOKOUT ICP/2000
ENG6 E-662 FIRST STRIKE ENVIRONMENTAL		10/01	SPENCER BERLIER	3	LOOKOUT ICP/0700	LOOKOUT ICP/2000
EXC1 E-545 EERA - BFC LIMITED		09/29	NEIL FARTHING	2	LOOKOUT ICP/0700	LOOKOUT ICP/2000
EXC2 E-468 4-Q TIMBER		10/01	ANTHONY BALDWIN	2	LOOKOUT ICP/0700	LOOKOUT ICP/2000
EXC2 E-510 OUTBACK WILDFIRE		10/06	DAVE ELLIS	2	LOOKOUT ICP/0700	LOOKOUT ICP/2000
SKD1 E-299 MARK JONES		09/27	CASEY HUNTLEY	2	LOOKOUT ICP/0700	LOOKOUT ICP/2000
CHP1 E-550			** SEE CHECK IN**		LOOKOUT ICP/0700	LOOKOUT ICP/2000
CHP1 E-695 EARTH INDUSTRIES		10/05	CRISTIAN SALAZAR	3	LOOKOUT ICP/0700	LOOKOUT ICP/2000
CHP2 E-481 BIG BARK CHIPPER (BDRK)		10/06	ETHAN PALMER	3	LOOKOUT ICP/0700	LOOKOUT ICP/2000
CHSL E-532 EERA - BFC LIMITED		10/08	FORTINO LARIOS	2	LOOKOUT ICP/0700	LOOKOUT ICP/2000
FRNT E-656 EERA - ROSE LOGGING		09/30	ROB MCCOLLOUGH	2	LOOKOUT ICP/0700	LOOKOUT ICP/2000
DUMP E-652 EERA - MARK JONES TRUCKING		10/01	JERRY WOLFORD	2	LOOKOUT ICP/0700	LOOKOUT ICP/2000
DUMP E-653 EERA - MARK JONES TRUCKING		10/01	BUDDY CLEGG	1	LOOKOUT ICP/0700	LOOKOUT ICP/2000
<b>8. Division/Group Communication Summary</b>						
Function	Channel	RX Frequency N/W	RX Tone/NAC	TX Frequency N/W	TX Tone/NAC	Mode
TACTICAL	SEE COM PLAN					
COMMAND	SEE COM PLAN					
<b>9. Prepared By (Resource Unit Leader)</b>		<b>Approved By (Planning Section Chief)</b>		<b>Date</b>	<b>Time</b>	
NICOLE LAGIOIA		MONICA RAMIREZ		09/24/2023	2000	



## Division/Group Assignment List (ICS 204 WF)

Controlled Unclassified Information//Basic

<b>1. Incident Name:</b>			<b>3.</b>			
BEDROCK LOOKOUT			<b>Branch:</b>		<b>Division/Group</b>	
<b>2. Operational Period: DAY</b>			<b>BEDROCK</b>		<b>NORTH REPAIR</b>	
Date/Time From: 09/25/2023 0700      MON	Date/Time To: 09/25/2023 2000      MON					
<b>4. Operations Personnel</b>						
<b>FIELD OPS</b>		TERRY WALTER DAN TRAPANESE (T)		<b>BRANCH DIRECTOR</b>		CHRIS LUNDGREN KEN FOSS (T)
<b>AIR ATTACK SUPERVISOR</b>				<b>DIVISION/GROUP SUPERVISOR</b>		WES WENTWORTH (LWD 9/27) MEG FLUHARTY (LWD 10/1) (T)
<b>5. Resources Assigned this Period</b>						
Strike Team / Task Force / Resource Designator		LWD	Leader	Number Persons	Drop Off PT./Time	Pick Up PT./Time
DUMP E-696 BRINKS LAND IMPROVEMENT		10/06	PHIL TELFORD	1	LOOKOUT ICP/0700	LOOKOUT ICP/2000
DUMP E-697 BRINKS LAND IMPROVEMENT		10/07	BRET SCHMID	1	LOOKOUT ICP/0700	LOOKOUT ICP/2000
LOGP E-333 AXSUS		10/01	JESUS GUSMAN	2	LOOKOUT ICP/0700	LOOKOUT ICP/2000
LOGP E-334 AXSUS		10/01	JOSE SERANO	2	LOOKOUT ICP/0700	LOOKOUT ICP/2000
LOGL E-512 BRINK BROTHERS (BDRK)		09/25	JASON LEWIS	2	LOOKOUT ICP/0700	LOOKOUT ICP/2000
SOFR O-830		10/03	LUCAS DIXON	1	LOOKOUT ICP/0700	LOOKOUT ICP/2000
E-277 AMBO 15		09/26	LUCY CUMMINS	2	LOOKOUT ICP/0700	LOOKOUT ICP/2000
O-55 REMS 1		09/28	SAGE STEWART	4	LOOKOUT ICP/0700	LOOKOUT ICP/2000
REAF O-805		10/02	ELLIOTT WHARTON	1	LOOKOUT ICP/0700	LOOKOUT ICP/2000
REAF O-818		10/04	BRANDYN CHILD	1	LOOKOUT ICP/0700	LOOKOUT ICP/2000
REAF O-896		10/04	ASHLEY DI LEONARDI	1	LOOKOUT ICP/0700	LOOKOUT ICP/2000
REAF O-965		10/06	ROB MICKEY	1	LOOKOUT ICP/0700	LOOKOUT ICP/2000
<b>6. Control Operations/Work Assignments:</b>						
<p><u>Task:</u> Continue chipping operations throughout the Division. Utilize engines to patrol fire perimeter and address smoke and areas of heat, as necessary.</p> <p><u>Purpose:</u> Aid in the completion of repair efforts to areas disturbed by wildfire suppression.</p> <p><u>End State:</u> Complete fire suppression repair activities north and west of DP123 and north and east of DP205. Follow actions outlined in the suppression repair plan.</p>						
<b>7. Special Instructions:</b>						
<p><b>Needs:</b> HEQB x 2; TFLD x 1; FRNT x 1</p>						
<b>8. Division/Group Communication Summary</b>						
Function	Channel	RX Frequency N/W	RX Tone/NAC	TX Frequency N/W	TX Tone/NAC	Mode
TACTICAL	SEE COM PLAN					
COMMAND	SEE COM PLAN					
<b>9. Prepared By (Resource Unit Leader)</b>			<b>Approved By (Planning Section Chief)</b>		<b>Date</b>	<b>Time</b>
NICOLE LAGIOIA			MONICA RAMIREZ		09/24/2023	2000

**Division/Group Assignment List (ICS 204 WF)**  
 Controlled Unclassified Information//Basic

<b>1. Incident Name:</b>			<b>3.</b>			
BEDROCK LOOKOUT			<b>Branch:</b>		<b>Division/Group</b>	
<b>2. Operational Period: DAY</b>			BEDROCK		SOUTH REPAIR	
Date/Time From: 09/25/2023 0700	MON	Date/Time To: 09/25/2023 2000				
<b>4. Operations Personnel</b>						
<b>FIELD OPS</b>		TERRY WALTER DAN TRAPANESE (T)		<b>BRANCH DIRECTOR</b>		CHRIS LUNDGREN KEN FOSS (T)
<b>AIR ATTACK SUPERVISOR</b>				<b>DIVISION/GROUP SUPERVISOR</b>		TED PIEHL (LWD 9/27) SHANE ORSER (LWD 9/28) (T)
<b>5. Resources Assigned this Period</b>						
Strike Team / Task Force / Resource Designator		LWD	Leader	Number Persons	Drop Off PT./Time	Pick Up PT./Time
TFLD (T) O-911		09/26	DANIEL NORSKOG	1	LOOKOUT ICP/0700	LOOKOUT ICP/2000
TFLD (T) O-927		10/05	ARTURO LOZANO	1	LOOKOUT ICP/0700	LOOKOUT ICP/2000
HEQB O-732		09/28	BRIAN JOHNSON	1	LOOKOUT ICP/0700	LOOKOUT ICP/2000
HEQB O-838		10/01	BRYAN VESCE	1	LOOKOUT ICP/0700	LOOKOUT ICP/2000
HEQB (T) O-742		09/28	DEREK DOMIS	1	LOOKOUT ICP/0700	LOOKOUT ICP/2000
HEQB (T) O-874		10/04	LOGAN PARSLEY	1	LOOKOUT ICP/0700	LOOKOUT ICP/2000
FELB O-738		09/27	CHRISTOPHER WENNOGLE	1	LOOKOUT ICP/0700	LOOKOUT ICP/2000
FMOD O-795 HANDCCUTTING		09/29	CORY KEFFER	2	LOOKOUT ICP/0700	LOOKOUT ICP/2000
FMOD O-862 TOMS TIMBER		10/03	TRAVIS LOCKWOOD	2	LOOKOUT ICP/0700	LOOKOUT ICP/2000
FMOD O-918 PACIFIC RIDGELINE FORESTRY		10/04	JACOB MILLER	2	LOOKOUT ICP/0700	LOOKOUT ICP/2000
HC2 C-100 MR CONTRACTING C-2		09/30	MANUEL JIMENEZ	20	LOOKOUT ICP/0700	LOOKOUT ICP/2000
HC2 C-101 MR CONTRACTING C-1		09/30	TOMAS GUZMAN GARCIA	20	LOOKOUT ICP/0700	LOOKOUT ICP/2000
HC2 C-104 WILLAMETTE VALLEY REFOR. C-7		10/02	JAVIER GUZMAN	20	LOOKOUT ICP/0700	LOOKOUT ICP/2000
ENG4 E-1 J3 CONTRACTING (BDRK)		10/06	DAN TEGART	3	LOOKOUT ICP/0700	LOOKOUT ICP/2000
*ENG4 E-268 AAA THUNDERBOLT		09/25	MONTIE REYNOLDS	3	LOOKOUT ICP/0700	LOOKOUT ICP/2000
ENG4 E-664 FIREMOG		10/02	JACE HOFFMAN	3	LOOKOUT ICP/0700	LOOKOUT ICP/2000
ENG4 E-665 FIREMOG		10/01	MIKE PARENT	3	LOOKOUT ICP/0700	LOOKOUT ICP/2000
ENG4 E-666 TORRES CONTRACTING		10/02	JUAN TORRES	3	LOOKOUT ICP/0700	LOOKOUT ICP/2000
EXC1 E-546 EERA - AXSUS ENTERPRISES		10/07	CHARLES MAINWARING	2	LOOKOUT ICP/0700	LOOKOUT ICP/2000
<b>8. Division/Group Communication Summary</b>						
Function	Channel	RX Frequency N/W	RX Tone/NAC	TX Frequency N/W	TX Tone/NAC	Mode
TACTICAL	SEE COM PLAN					
COMMAND	SEE COM PLAN					
<b>9. Prepared By (Resource Unit Leader)</b>			<b>Approved By (Planning Section Chief)</b>		<b>Date</b>	<b>Time</b>
NICOLE LAGIOIA			MONICA RAMIREZ		09/24/2023	2000



**Division/Group Assignment List (ICS 204 WF)**  
Controlled Unclassified Information//Basic

<b>1. Incident Name:</b>			<b>3.</b>			
BEDROCK LOOKOUT			<b>Branch:</b>		<b>Division/Group</b>	
<b>2. Operational Period: DAY</b>			BEDROCK		SOUTH REPAIR	
Date/Time From: 09/25/2023 0700	MON	Date/Time To: 09/25/2023 2000				
<b>4. Operations Personnel</b>						
<b>FIELD OPS</b>		TERRY WALTER DAN TRAPANESE (T)		<b>BRANCH DIRECTOR</b>		CHRIS LUNDGREN KEN FOSS (T)
<b>AIR ATTACK SUPERVISOR</b>				<b>DIVISION/GROUP SUPERVISOR</b>		TED PIEHL (LWD 9/27) SHANE ORSER (LWD 9/28) (T)
<b>5. Resources Assigned this Period</b>						
Strike Team / Task Force / Resource Designator		LWD	Leader	Number Persons	Drop Off PT./Time	Pick Up PT./Time
EXC2 E-654 EARNEST HEATHER		10/01	MITCH GRIFFITH	2	LOOKOUT ICP/0700	LOOKOUT ICP/2000
EXC2 E-655 ZEB'S TREE SERVICE		10/01	CAMERON HOMES	2	LOOKOUT ICP/0700	LOOKOUT ICP/2000
SKD2 E-232 ROBERT S MURRAY (BDRK)		10/01	ARON GREGORY	2	LOOKOUT ICP/0700	LOOKOUT ICP/2000
CHP1 E-531 TOP NOTCH TREE		10/02	DAMIEN STATEN	2	LOOKOUT ICP/0700	LOOKOUT ICP/2000
CHP2 E-505 SAYLOR CONSTRUCTION (BDRK)		10/01	ETHAN PHILLIPS	3	LOOKOUT ICP/0700	LOOKOUT ICP/2000
SOFR O-830		10/03	LUCAS DIXON	1	LOOKOUT ICP/0700	LOOKOUT ICP/2000
E-14 AMBO 10 (BDRK)		10/14	ANDRE MARTONI	2	LOOKOUT ICP/0700	LOOKOUT ICP/2000
O-667 MEDIC 221		10/06	DEREK JORDAN	1	LOOKOUT ICP/0700	LOOKOUT ICP/2000
ARCH O-807		10/01	JENNIFER HERNANDEZ	1	LOOKOUT ICP/0700	LOOKOUT ICP/2000
REAF O-818		10/04	BRANDYN CHILD	1	LOOKOUT ICP/0700	LOOKOUT ICP/2000
REAF O-896		10/04	ASHLEY DI LEONARDI	1	LOOKOUT ICP/0700	LOOKOUT ICP/2000
REAF O-965		10/06	ROB MICKEY	1	LOOKOUT ICP/0700	LOOKOUT ICP/2000
<b>6. Control Operations/Work Assignments:</b>						
<u>Task:</u> Utilize crews to mop up, continue dozer/handline repair and backhaul of unneeded equipment. Utilize heavy equipment to continue with dozer line and drainage repair. Utilize engines to patrol fire perimeter and address smoke and areas of heat, as necessary.						
<u>Purpose:</u> Restore lands impacted by wildfire and suppression tactics.						
<u>End State:</u> Lands restored.						
<b>7. Special Instructions:</b>						
*Denotes resources for Initial Attack (IA)						
<b>Needs:</b> TFLD x1						
<b>8. Division/Group Communication Summary</b>						
Function	Channel	RX Frequency N/W	RX Tone/NAC	TX Frequency N/W	TX Tone/NAC	Mode
TACTICAL	SEE COM PLAN					
COMMAND	SEE COM PLAN					
<b>9. Prepared By (Resource Unit Leader)</b>		<b>Approved By (Planning Section Chief)</b>			<b>Date</b>	<b>Time</b>
NICOLE LAGIOIA		MONICA RAMIREZ			09/24/2023	2000

**Division/Group Assignment List (ICS 204 WF)**  
Controlled Unclassified Information//Basic

<b>1. Incident Name:</b>			<b>3.</b>			
BEDROCK LOOKOUT			<b>Branch:</b>		<b>Division/Group</b>	
<b>2. Operational Period:</b> DAY			I		A / C	
Date/Time From: 09/25/2023 0700 MON	Date/Time To: 09/25/2023 2000 MON					
<b>4. Operations Personnel</b>						
<b>FIELD OPS</b>		TERRY WALTER DAN TRAPANESE (T)		<b>BRANCH DIRECTOR</b>		SAM TACCHINI JOSH VERELLEN (T)
<b>AIR ATTACK SUPERVISOR</b>				<b>DIVISION/GROUP SUPERVISOR</b>		ERIC KIEHN (LWD 10/2) NATHAN BASFORD (LWD 9/25) (T)
<b>5. Resources Assigned this Period</b>						
Strike Team / Task Force / Resource Designator	LWD	Leader	Number Persons	Drop Off PT./Time	Pick Up PT./Time	
TFLD (T) O-869	10/04	MATTHEW BACA	1	LOOKOUT ICP/0700	LOOKOUT ICP/2000	
HEQB O-926	10/07	SETH GREENE	1	LOOKOUT ICP/0700	LOOKOUT ICP/2000	
HEQB (T) O-871	10/03	CHASE SMITH	1	LOOKOUT ICP/0700	LOOKOUT ICP/2000	
HEQB (T) O-872	10/03	BROCK HARMON	1	LOOKOUT ICP/0700	LOOKOUT ICP/2000	
STEN O-951	10/07	ERNEST PRAX	1	LOOKOUT ICP/0700	LOOKOUT ICP/2000	
HC2 C-102 FRANCO REFORESTATION C-2	10/01	FRANCIS LEE FRANCO	20	LOOKOUT ICP/0700	LOOKOUT ICP/2000	
ENG3 E-301 HEK JONES	09/25	DANIEL SULLIVAN	3	LOOKOUT ICP/0700	LOOKOUT ICP/2000	
ENG3 E-524 WILDLAND SUPRT TM	09/29	MIKE JARAMILLO	3	LOOKOUT ICP/0700	LOOKOUT ICP/2000	
ENG4 E-633 NVEKD E1444	09/26	BLAKE JONES	4	LOOKOUT ICP/0700	LOOKOUT ICP/2000	
ENG4 E-680 NORTH PACIFIC FORESTRY	10/03	TYLER PAYNE	3	LOOKOUT ICP/0700	LOOKOUT ICP/2000	
FEL1 E-100 BOULDER RIDGE	10/11	SHANE MURPHY	2	LOOKOUT ICP/0700	LOOKOUT ICP/2000	
SKD1 E-671 MKS LOGISTICS	10/01	SHANE HUFFMAN	2	LOOKOUT ICP/0700	LOOKOUT ICP/2000	
EXC2 E-541 VALLEY TIMBER	10/02	NELSON TREAVOR	2	LOOKOUT ICP/0700	LOOKOUT ICP/2000	
SOFR O-715.99	09/30	RYDER JONES	1	LOOKOUT ICP/0700	LOOKOUT ICP/2000	
E-433 AMBO 308	10/01	ALI HAMMOUDEH	2	LOOKOUT ICP/0700	LOOKOUT ICP/2000	
O-676 MEDIC 222	09/30	RITVIK CHAKRABORTY	1	LOOKOUT ICP/0700	LOOKOUT ICP/2000	
REAF O-818	10/03	BRANDYN CHILD	1	LOOKOUT ICP/0700	LOOKOUT ICP/2000	
REAF O-904	10/04	PATRICK CATALANO	1	LOOKOUT ICP/0700	LOOKOUT ICP/2000	
REAF O-905	10/04	BENJAMIN HATHAWAY	1	LOOKOUT ICP/0700	LOOKOUT ICP/2000	
REAF O-947	09/27	EMMA VANCE	1	LOOKOUT ICP/0700	LOOKOUT ICP/2000	
<b>8. Division/Group Communication Summary</b>						
Function	Channel	RX Frequency N/W	RX Tone/NAC	TX Frequency N/W	TX Tone/NAC	Mode
TACTICAL	SEE COM PLAN					
COMMAND	SEE COM PLAN					
<b>9. Prepared By (Resource Unit Leader)</b>		<b>Approved By (Planning Section Chief)</b>		<b>Date</b>		<b>Time</b>
NICOLE LAGIOIA		MONICA RAMIREZ		09/24/2023		2000



**Division/Group Assignment List (ICS 204 WF)**  
Controlled Unclassified Information//Basic

1. Incident Name:		3.				
BEDROCK LOOKOUT		Branch:		Division/Group		
2. Operational Period: DAY		I		A / C		
Date/Time From: 09/25/2023 0700	MON	Date/Time To: 09/25/2023 2000	MON			
4. Operations Personnel						
FIELD OPS	TERRY WALTER DAN TRAPANESE (T)		BRANCH DIRECTOR	SAM TACCHINI JOSH VERELLEN (T)		
AIR ATTACK SUPERVISOR			DIVISION/GROUP SUPERVISOR	ERIC KIEHN (LWD 10/2) NATHAN BASFORD (LWD 9/25) (T)		
5. Resources Assigned this Period						
Strike Team / Task Force / Resource Designator	LWD	Leader	Number Persons	Drop Off PT./Time	Pick Up PT./Time	
REAF O-948	09/27	ANGELICA KNEISLY	1	LOOKOUT ICP/0700	LOOKOUT ICP/2000	
6. Control Operations/Work Assignments:						
<p><u>Task:</u> Continue log processing and repair work, as appropriate. Backhaul unnecessary equipment and supplies. Monitor fire progression.</p> <p><u>Purpose:</u> Continue completion of repair efforts. Keep fire east of 15 Road.</p> <p><u>End State:</u> Minimize impacts to Hwy 126 corridor. Minimize impacts to HJ Andrews, other infrastructure, and natural resources. Complete suppression repair activities.</p>						
7. Special Instructions:						
Needs: TFLD x 1						
8. Division/Group Communication Summary						
Function	Channel	RX Frequency N/W	RX Tone/NAC	TX Frequency N/W	TX Tone/NAC	Mode
TACTICAL	SEE COM PLAN					
COMMAND	SEE COM PLAN					
9. Prepared By (Resource Unit Leader)		Approved By (Planning Section Chief)		Date	Time	
NICOLE LAGIOIA		MONICA RAMIREZ		09/24/2023	2000	

**Division/Group Assignment List (ICS 204 WF)**  
**Controlled Unclassified Information//Basic**

<b>1. Incident Name:</b>				<b>3.</b>		
BEDROCK LOOKOUT				Branch:  I	Division/Group  H	
<b>2. Operational Period: DAY</b>						
Date/Time From: 09/25/2023 0700 MON		Date/Time To: 09/25/2023 2000 MON				
<b>4. Operations Personnel</b>						
FIELD OPS		TERRY WALTER DAN TRAPANESE (T)		BRANCH DIRECTOR		SAM TACCHINI JOSH VERELLEN (T)
AIR ATTACK SUPERVISOR				DIVISION/GROUP SUPERVISOR		ZANE BROWN (LWD 10/3) BRIAN BRADBURY (LWD 10/7) (T)
<b>5. Resources Assigned this Period</b>						
Strike Team / Task Force / Resource Designator	LWD	Leader	Number Persons	Drop Off PT./Time	Pick Up PT./Time	
TFLD O-700	09/25	KEITH CRAIN	1	LOOKOUT ICP/0700	LOOKOUT ICP/2000	
TFLD (T) O-873	10/04	KODI LESLIE	1	LOOKOUT ICP/0700	LOOKOUT ICP/2000	
HEQB O-744	09/26	ADAM HUMBACH	1	LOOKOUT ICP/0700	LOOKOUT ICP/2000	
FELB (T) O-875	10/04	ORION ADAMO	1	LOOKOUT ICP/0700	LOOKOUT ICP/2000	
FELB (T) O-876	10/03	BRADY GLAUTHIER	1	LOOKOUT ICP/0700	LOOKOUT ICP/2000	
FELB (T) O-877	10/03	FORREST CLARK	1	LOOKOUT ICP/0700	LOOKOUT ICP/2000	
FMOD O-794 FALLER MODULE	09/29	CHRIS REED	2	LOOKOUT ICP/0700	LOOKOUT ICP/2000	
FMOD O-837 TOMS TIMBER	10/02	STEVEN JOSH	2	LOOKOUT ICP/0700	LOOKOUT ICP/2000	
FMOD O-861 WEST COAST CUTTING	10/02	BALDO MACIEL	2	LOOKOUT ICP/0700	LOOKOUT ICP/2000	
HC2 C-99 BIG BARK CHIPPERS #2	10/01	CHESTER FULBRIGHT	20	LOOKOUT ICP/0700	LOOKOUT ICP/2000	
HC2 C-106 TOM FERY FARM C-1	10/03	SERAFÍN GARCÍA	20	LOOKOUT ICP/0700	LOOKOUT ICP/2000	
HC2 C-107 J.C.OROZCO REFORESTATION C-5	10/06	JUAN OCHOA MORA	20	LOOKOUT ICP/0700	LOOKOUT ICP/2000	
ENG6 E-660 FIRST STRIKE	10/01	ZANDER HAMILTON	3	LOOKOUT ICP/0700	LOOKOUT ICP/2000	
ENG6 E-682 OR-DEF - 652	10/03	BRANDON R BROWN	6	LOOKOUT ICP/0700	LOOKOUT ICP/2000	
SKD1 E-25 RUSSELL	09/25	MARSHAL MECHAM	2	LOOKOUT ICP/0700	LOOKOUT ICP/2000	
SKD1 E-672 T2, INC	10/02	JAKE WILLE	2	LOOKOUT ICP/0700	LOOKOUT ICP/2000	
FORW E-343 MILLER	09/28	SCOTT KELLOGG	2	LOOKOUT ICP/0700	LOOKOUT ICP/2000	
FEL1 E-238 TJ'S MECHANICAL CUTTING	09/29	AUSTIN SEEKERS	2	LOOKOUT ICP/0700	LOOKOUT ICP/2000	
FEL1 E-648 BFC LIMITED	09/28	SHERI ROTH	2	LOOKOUT ICP/0700	LOOKOUT ICP/2000	
<b>8. Division/Group Communication Summary</b>						
Function	Channel	RX Frequency N/W	RX Tone/NAC	TX Frequency N/W	TX Tone/NAC	Mode
TACTICAL	SEE COM PLAN					
COMMAND	SEE COM PLAN					
<b>9. Prepared By (Resource Unit Leader)</b>		<b>Approved By (Planning Section Chief)</b>		<b>Date</b>	<b>Time</b>	
NICOLE LAGIOIA		MONICA RAMIREZ		09/24/2023	2000	



## Division/Group Assignment List (ICS 204 WF)

Controlled Unclassified Information//Basic

<b>1. Incident Name:</b>			<b>3.</b>			
BEDROCK LOOKOUT			<b>Branch:</b>  I		<b>Division/Group</b>  H	
<b>2. Operational Period: DAY</b>						
Date/Time From: 09/25/2023 0700 MON		Date/Time To: 09/25/2023 2000 MON				
<b>4. Operations Personnel</b>						
<b>FIELD OPS</b>		TERRY WALTER DAN TRAPANESE (T)		<b>BRANCH DIRECTOR</b>		SAM TACCHINI JOSH VERELLEN (T)
<b>AIR ATTACK SUPERVISOR</b>				<b>DIVISION/GROUP SUPERVISOR</b>		ZANE BROWN (LWD 10/3) BRIAN BRADBURY (LWD 10/7) (T)
<b>5. Resources Assigned this Period</b>						
Strike Team / Task Force / Resource Designator		LWD	Leader	Number Persons	Drop Off PT./Time	Pick Up PT./Time
CHP1 E-335 AXSUS		09/27	MIKE FOWLER	2	LOOKOUT ICP/0700	LOOKOUT ICP/2000
CHP1 E-536 AXSUS ENTERPRISES		10/02	DAVID BERGQUIST	2	LOOKOUT ICP/0700	LOOKOUT ICP/2000
CHP1 E-689 PATRICK ENVIRONMENTAL			** SEE CHECK IN **		LOOKOUT ICP/0700	LOOKOUT ICP/2000
CHP2 E-3508 BIG BARK		10/05	MATT DERUSHA	2	LOOKOUT ICP/0700	LOOKOUT ICP/2000
SOFR O-715.99		09/30	RYDER JONES	1	LOOKOUT ICP/0700	LOOKOUT ICP/2000
E-173 AMBO 304		09/27	RUSSELL LONG THOMPSON	1	LOOKOUT ICP/0700	LOOKOUT ICP/2000
O-789 MEDIC 229		09/28	NATHAN DAVIS	1	LOOKOUT ICP/0700	LOOKOUT ICP/2000
REAF O-818		10/03	BRANDYN CHILD	1	LOOKOUT ICP/0700	LOOKOUT ICP/2000
REAF O-904		10/04	PATRICK CATALANO	1	LOOKOUT ICP/0700	LOOKOUT ICP/2000
REAF O-905		10/04	BENJAMIN HATHAWAY	1	LOOKOUT ICP/0700	LOOKOUT ICP/2000
<b>6. Control Operations/Work Assignments:</b>						
<p><u>Task:</u> Continue log processing and repair work, as appropriate. Backhaul unnecessary equipment and supplies. Monitor fire progression.</p> <p><u>Purpose:</u> Continue completion of repair efforts. Keep fire south of the 1508 Road.</p> <p><u>End State:</u> Minimize impacts to HJ Andrews, other infrastructure, and natural resources. Complete suppression repair activities.</p>						
<b>7. Special Instructions:</b>						
<p>Limit traffic on 1506 Rd. No traffic allowed past DP12 on the 1506 Rd. Limit traffic on the 1508 Rd. Coordinate activities with HJ Andrews Staff.</p> <p><b>Needs:</b> DIVS(t) x 1 EXC2 x 1; TFLD x 1</p>						
<b>8. Division/Group Communication Summary</b>						
Function	Channel	RX Frequency N/W	RX Tone/NAC	TX Frequency N/W	TX Tone/NAC	Mode
TACTICAL	SEE COM PLAN					
COMMAND	SEE COM PLAN					
<b>9. Prepared By (Resource Unit Leader)</b>			<b>Approved By (Planning Section Chief)</b>		<b>Date</b>	<b>Time</b>
NICOLE LAGIOIA			MONICA RAMIREZ		09/24/2023	2000

## Division/Group Assignment List (ICS 204 WF)

Controlled Unclassified Information//Basic

<b>1. Incident Name:</b>			<b>3.</b>			
BEDROCK LOOKOUT			<b>Branch:</b>		<b>Division/Group</b>	
<b>2. Operational Period:</b> DAY			I		L	
Date/Time From: 09/25/2023 0700 MON		Date/Time To: 09/25/2023 2000 MON				
<b>4. Operations Personnel</b>						
<b>FIELD OPS</b>		TERRY WALTER DAN TRAPANESE (T)		<b>BRANCH DIRECTOR</b>		
				SAM TACCHINI JOSH VERELLEN (T)		
<b>AIR ATTACK SUPERVISOR</b>				<b>DIVISION/GROUP SUPERVISOR</b>		
				DAREK PEPPE (LWD 9/27) COLBEY RICHMOND (LWD 9/25) (T)		
<b>5. Resources Assigned this Period</b>						
Strike Team / Task Force / Resource Designator		LWD	Leader	Number Persons	Drop Off PT./Time	Pick Up PT./Time
TFLD O-864		10/04	CLINTON WADE	1	LOOKOUT ICP/0700	LOOKOUT ICP/2000
TFLD (T) O-906		10/03	C. YZQUIERDO	1	LOOKOUT ICP/0700	LOOKOUT ICP/2000
HEQB (T) O-870		10/03	TRAVIS POLLARD	1	LOOKOUT ICP/0700	LOOKOUT ICP/2000
FMOD O-917 THE ART OF FELLING TIMBER		10/04	MAIAH REINSMA	2	LOOKOUT ICP/0700	LOOKOUT ICP/2000
IHC C-97 ROOSEVELT IHC		09/27	LARRY MONEY	20	LOOKOUT ICP/0700	LOOKOUT ICP/2000
*ENG4 E-631 - OR-MHF - 421		09/25	MICHAEL L WHITAKER	4	LOOKOUT ICP/0700	LOOKOUT ICP/2000
ENG6 E-506 TRI-STATE FIRE (BDRK)		09/29	STANLEY SMITH	3	LOOKOUT ICP/0700	LOOKOUT ICP/2000
*ENG6 E-683 OR-DEF - 636		10/03	KREG JACKSON	6	LOOKOUT ICP/0700	LOOKOUT ICP/2000
DZR2 E-26 GRIFFITH		09/25	MATT JAEGER	2	LOOKOUT ICP/0700	LOOKOUT ICP/2000
EXC2 E-690 J & D LOGGING & CONTRACTING			**SEE CHECK IN**		LOOKOUT ICP/0700	LOOKOUT ICP/2000
CHP1 E-189 BRINK BROTHERS		09/25	FRENTON EDWARDS	3	LOOKOUT ICP/0700	LOOKOUT ICP/2000
CHP1 E-555 MILLER TIMBER		09/27	TIM JONES	2	LOOKOUT ICP/0700	LOOKOUT ICP/2000
CHP2 E-620 DIAMOND ROAD MAINTENANCE		09/26	ROBERT PRATTE	3	LOOKOUT ICP/0700	LOOKOUT ICP/2000
CHSL E-686 AXSUS ENTERPRISES		10/07	SKYLAR WILSON	1	LOOKOUT ICP/0700	LOOKOUT ICP/2000
FORW E-595 MILLER TIMBER SERVICES		10/05	MIKE HONEYWELL	2	LOOKOUT ICP/0700	LOOKOUT ICP/2000
SOFR O-715.99		09/30	RYDER JONES	1	LOOKOUT ICP/0700	LOOKOUT ICP/2000
E-3 AMBO 301		10/03	ALEXIS WASDEN	2	LOOKOUT ICP/0700	LOOKOUT ICP/2000
O-727 MEDIC 226		10/03	STEVE MCDOWELL	1	LOOKOUT ICP/0700	LOOKOUT ICP/2000
<b>8. Division/Group Communication Summary</b>						
Function	Channel	RX Frequency N/W	RX Tone/NAC	TX Frequency N/W	TX Tone/NAC	Mode
TACTICAL	SEE COM PLAN					
COMMAND	SEE COM PLAN					
<b>9. Prepared By (Resource Unit Leader)</b>			<b>Approved By (Planning Section Chief)</b>		<b>Date</b>	<b>Time</b>
NICOLE LAGIOIA			MONICA RAMIREZ		09/24/2023	2000



**Division/Group Assignment List (ICS 204 WF)**  
Controlled Unclassified Information//Basic

<b>1. Incident Name:</b>			<b>3.</b>			
BEDROCK LOOKOUT			<b>Branch:</b>		<b>Division/Group</b>	
<b>2. Operational Period:</b> DAY			I		L	
Date/Time From: 09/25/2023 0700 MON	Date/Time To: 09/25/2023 2000 MON					
<b>4. Operations Personnel</b>						
<b>FIELD OPS</b>		TERRY WALTER DAN TRAPANESE (T)		<b>BRANCH DIRECTOR</b>		SAM TACCHINI JOSH VERELLEN (T)
<b>AIR ATTACK SUPERVISOR</b>				<b>DIVISION/GROUP SUPERVISOR</b>		DAREK PEPPLER (LWD 9/27) COLBEY RICHMOND (LWD 9/25) (T)
<b>5. Resources Assigned this Period</b>						
Strike Team / Task Force / Resource Designator		LWD	Leader	Number Persons	Drop Off PT./Time	Pick Up PT./Time
REAF O-818		10/03	BRANDYN CHILD	1	LOOKOUT ICP/0700	LOOKOUT ICP/2000
REAF O-889		10/03	ERIC GJONNES	1	LOOKOUT ICP/0700	LOOKOUT ICP/2000
REAF O-904		10/04	PATRICK CATALANO	1	LOOKOUT ICP/0700	LOOKOUT ICP/2000
REAF O-905		10/04	BENJAMIN HATHAWAY	1	LOOKOUT ICP/0700	LOOKOUT ICP/2000
<b>6. Control Operations/Work Assignments:</b>						
<p><u>Task:</u> Continue backhaul, chipping, and other repair work, as appropriate.</p> <p><u>Purpose:</u> Continue completion of repair efforts. Keep fire south of 1508 Road.</p> <p><u>End State:</u> Impacts to natural resources and infrastructure are minimized. Fire contained within primary lines. Completion of suppression repair activities.</p>						
<b>7. Special Instructions:</b>						
<p>Contact DIVS prior to entry to reduce congestion on 1508 Rd.</p> <p>*Denotes resources for Initial Attack (IA)</p> <p><b>Needs:</b></p>						
<b>8. Division/Group Communication Summary</b>						
Function	Channel	RX Frequency N/W	RX Tone/NAC	TX Frequency N/W	TX Tone/NAC	Mode
TACTICAL	SEE COM PLAN					
COMMAND	SEE COM PLAN					
<b>9. Prepared By (Resource Unit Leader)</b>			<b>Approved By (Planning Section Chief)</b>		<b>Date</b>	<b>Time</b>
NICOLE LAGIOIA			MONICA RAMIREZ		09/24/2023	2000

**Division/Group Assignment List (ICS 204 WF)**  
**Controlled Unclassified Information//Basic**

<b>1. Incident Name:</b>				<b>3.</b>		
BEDROCK LOOKOUT				<b>Branch:</b>		<b>Division/Group</b>
<b>2. Operational Period:</b> DAY				V		P
Date/Time From: 09/25/2023 0700 MON		Date/Time To: 09/25/2023 2000 MON				
<b>4. Operations Personnel</b>						
<b>FIELD OPS</b>		TERRY WALTER DAN TRAPANESE (T)		<b>BRANCH DIRECTOR</b>		THOM TAYLOR BRIAN BATES (T)
<b>AIR ATTACK SUPERVISOR</b>				<b>DIVISION/GROUP SUPERVISOR</b>		THOMAS GOHEEN (LWD 10/2)
<b>5. Resources Assigned this Period</b>						
Strike Team / Task Force / Resource Designator		LWD	Leader	Number Persons	Drop Off PT./Time	Pick Up PT./Time
TFLD (T) O-868		10/06	BRYAN MARKS	1	LOOKOUT ICP/0700	LOOKOUT ICP/2000
HEQB O-567		09/26	BART WILSON	1	LOOKOUT ICP/0700	LOOKOUT ICP/2000
HC2IA C-108 WIF MIDDLE FORK		10/07	ADAM DANIEL VROON	20	LOOKOUT ICP/0700	LOOKOUT ICP/2000
HC2 C-105 IRON MOUNTAIN FIREFIGHTING C-4		10/02	JOSE JUAN ZAVALA	20	LOOKOUT ICP/0700	LOOKOUT ICP/2000
ENG6 E-632 NCF-642		09/26	KELDON MARTIN	3	LOOKOUT ICP/0700	LOOKOUT ICP/2000
FORW E-607 AXSUS		09/29	BILL KLEIN	2	LOOKOUT ICP/0700	LOOKOUT ICP/2000
EXC2 E-614 FENTER LOGGING		10/02	PAUL FENTER	2	LOOKOUT ICP/0700	LOOKOUT ICP/2000
BHOE E-498 AXSUS ENTERPRISES -		09/28	PETER MCANERIN	2	LOOKOUT ICP/0700	LOOKOUT ICP/2000
CHP1 E-688 WILD FIRE SERVICES		10/06	TIM LOGOZZO SR	3	LOOKOUT ICP/0700	LOOKOUT ICP/2000
CHP2 E-691 GRAYBACK FORESTRY		10/05	JARED COURNOYER	3	LOOKOUT ICP/0700	LOOKOUT ICP/2000
DUMP E-496 RUSSELLS MANAGEMENT (BDRK)		10/01	AUSTIN WILEY	1	LOOKOUT ICP/0700	LOOKOUT ICP/2000
LOGL E-62 MARK JONES		10/01	ROLAND STRUM	2	LOOKOUT ICP/0700	LOOKOUT ICP/2000
WTS2 E-450 CHARLES E. IRELAND		09/26	CRAIG VEY	1	LOOKOUT ICP/0700	LOOKOUT ICP/2000
SOFC O-674		09/26	GARY STRICKLAND	1	LOOKOUT ICP/0700	LOOKOUT ICP/2000
E-341 AMBO 306		10/03	STEPHEN SPIGELMAN	2	LOOKOUT ICP/0700	LOOKOUT ICP/2000
O-679 MEDIC 224		10/07	NOAH METZLER	1	LOOKOUT ICP/0700	LOOKOUT ICP/2000
O-763 EMT 123		10/04	IAN ROY	1	LOOKOUT ICP/0700	LOOKOUT ICP/2000
O-54 RAT 4		10/07	RICK BOSTAIN	1	LOOKOUT ICP/0700	LOOKOUT ICP/2000
REAF O-818		10/03	BRANDYN CHILD	1	LOOKOUT ICP/0700	LOOKOUT ICP/2000
<b>8. Division/Group Communication Summary</b>						
Function	Channel	RX Frequency N/W	RX Tone/NAC	TX Frequency N/W	TX Tone/NAC	Mode
TACTICAL	SEE COM PLAN					
COMMAND	SEE COM PLAN					
<b>9. Prepared By (Resource Unit Leader)</b>			<b>Approved By (Planning Section Chief)</b>		<b>Date</b>	<b>Time</b>
NICOLE LAGIOIA			MONICA RAMIREZ		09/24/2023	2000



## Division/Group Assignment List (ICS 204 WF)

Controlled Unclassified Information//Basic

<b>1. Incident Name:</b>			<b>3.</b>			
BEDROCK LOOKOUT			<b>Branch:</b>		<b>Division/Group</b>	
<b>2. Operational Period: DAY</b>			V		P	
Date/Time From: 09/25/2023 0700      MON		Date/Time To: 09/25/2023 2000      MON				
<b>4. Operations Personnel</b>						
<b>FIELD OPS</b>		TERRY WALTER DAN TRAPANESE (T)		<b>BRANCH DIRECTOR</b>		
<b>AIR ATTACK SUPERVISOR</b>				<b>DIVISION/GROUP SUPERVISOR</b>		
				THOM TAYLOR BRIAN BATES (T)		
				THOMAS GOHEEN (LWD 10/2)		
<b>5. Resources Assigned this Period</b>						
Strike Team / Task Force / Resource Designator		LWD	Leader	Number Persons	Drop Off PT./Time	Pick Up PT./Time
REAF O-889		10/03	ERIC GJONNES	1	LOOKOUT ICP/0700	LOOKOUT ICP/2000
REAF O-904		10/04	PATRICK CATALANO	1	LOOKOUT ICP/0700	LOOKOUT ICP/2000
REAF O-905		10/04	BENJAMIN HATHAWAY	1	LOOKOUT ICP/0700	LOOKOUT ICP/2000
<b>6. Control Operations/Work Assignments:</b>						
<p><u>Task:</u> Secure southern and eastern flank of fire. Repair areas disturbed by fire suppression activities in order to meet ecological goals.</p> <p><u>Purpose:</u> Contain fire to the west of HWY 126 and south of HWY 20 to minimize fire impacts to values at risk and infrastructure.</p> <p><u>End State:</u> Fire is contained and impacts to values at risk and infrastructure along HWY 126 corridor are minimized.</p>						
<b>7. Special Instructions:</b>						
<b>Needs:</b> DIVS (t) x 1						
<b>8. Division/Group Communication Summary</b>						
Function	Channel	RX Frequency N/W	RX Tone/NAC	TX Frequency N/W	TX Tone/NAC	Mode
TACTICAL	SEE COM PLAN					
COMMAND	SEE COM PLAN					
<b>9. Prepared By (Resource Unit Leader)</b>			<b>Approved By (Planning Section Chief)</b>		<b>Date</b>	<b>Time</b>
NICOLE LAGIOIA			MONICA RAMIREZ		09/24/2023	2000

## Division/Group Assignment List (ICS 204 WF)

Controlled Unclassified Information//Basic

<b>1. Incident Name:</b>			<b>3.</b>			
BEDROCK LOOKOUT			<b>Branch:</b>		<b>Division/Group</b>	
<b>2. Operational Period: DAY</b>			V		T	
Date/Time From: 09/25/2023 0700 MON		Date/Time To: 09/25/2023 2000 MON				
<b>4. Operations Personnel</b>						
<b>FIELD OPS</b>		TERRY WALTER DAN TRAPANESE (T)		<b>BRANCH DIRECTOR</b>		
<b>AIR ATTACK SUPERVISOR</b>				<b>DIVISION/GROUP SUPERVISOR</b>		
				THOM TAYLOR BRIAN BATES (T)  CAM CHAMBERS (LWD 9/27) KIP VAN DEWATER (LWD 9/30) (T)		
<b>5. Resources Assigned this Period</b>						
Strike Team / Task Force / Resource Designator		LWD	Leader	Number Persons	Drop Off PT./Time	Pick Up PT./Time
TFLD O-865		10/04	JONATHAN MCCONNELL	1	LOOKOUT ICP/0700	LOOKOUT ICP/2000
TFLD (T) O-867		09/27	COLIN VICKERS	1	LOOKOUT ICP/0700	LOOKOUT ICP/2000
HEQB O-728		09/25	JOSIAH FISCHER	1	LOOKOUT ICP/0700	LOOKOUT ICP/2000
HEQB (T) O-729		09/25	DALLAS BUCK	1	LOOKOUT ICP/0700	LOOKOUT ICP/2000
HC2 C-103 FRANCO REFORESTATION C-1		10/01	ARMANDO CASTRO	20	LOOKOUT ICP/0700	LOOKOUT ICP/2000
ENG3 E-451 J3 CONTRACTING (BDRK)		10/03	ANTHONY TENAJILLA	3	LOOKOUT ICP/0700	LOOKOUT ICP/2000
ENG4 E-256 HI COUNTRY		10/02	SILAS PEREA	3	LOOKOUT ICP/0700	LOOKOUT ICP/2000
ENG4 E-479 J3 CONTRACTING (BDRK)		10/04	STEWART NICHOLS	3	LOOKOUT ICP/0700	LOOKOUT ICP/2000
FEL1 E-280 BRINK BROTHERS (BDRK)		10/02	MATT SALES	2	LOOKOUT ICP/0700	LOOKOUT ICP/2000
FEL2 E-442 J & D LOGGING		10/01	DAN SWAN	2	LOOKOUT ICP/0700	LOOKOUT ICP/2000
EXC1 E-674 ZEB'S TREE SERVICE		10/02	DANNY GOODRICH	2	LOOKOUT ICP/0700	LOOKOUT ICP/2000
FORW E-594 MILLER TIMBER SERVICES		09/27	CARSON DIXON	1	LOOKOUT ICP/0700	LOOKOUT ICP/2000
CHP1 E-538 ANVIL BUILDERS		09/27	JUSTIN BOYLE	2	LOOKOUT ICP/0700	LOOKOUT ICP/2000
CHP1 E-542 MOUNTAIN VIEW TREE		09/29	KAI ELROD	2	LOOKOUT ICP/0700	LOOKOUT ICP/2000
CHP1 E-673 WYEAST FORESTRY		10/02	ERIK NELSON	2	LOOKOUT ICP/0700	LOOKOUT ICP/2000
CHP2 E-692 EARTH INDUSTRIES		10/06	TONY WRIGHT	3	LOOKOUT ICP/0700	LOOKOUT ICP/2000
CHP2 E-693 MP FORESTRY		10/06	RAUL MORENO	3	LOOKOUT ICP/0700	LOOKOUT ICP/2000
CHSL E-684 AXSUS ENTERPRISES - 65410		10/07	TODD WEST	1	LOOKOUT ICP/0700	LOOKOUT ICP/2000
LOGL E-240 NORTHWEST		09/28	BAIRD DRAGO	2	LOOKOUT ICP/0700	LOOKOUT ICP/2000
LOGT E-646 EERA - WILDKAT TRUCKING		09/27	JODY LANCE	1	LOOKOUT ICP/0700	LOOKOUT ICP/2000
<b>8. Division/Group Communication Summary</b>						
Function	Channel	RX Frequency N/W	RX Tone/NAC	TX Frequency N/W	TX Tone/NAC	Mode
COMMAND	SEE COM PLAN					
TACTICAL	SEE COM PLAN					
<b>9. Prepared By (Resource Unit Leader)</b>			<b>Approved By (Planning Section Chief)</b>		<b>Date</b>	<b>Time</b>
NICOLE LAGIOIA			MONICA RAMIREZ		09/24/2023	2000



## Division/Group Assignment List (ICS 204 WF)

Controlled Unclassified Information//Basic

<b>1. Incident Name:</b>			<b>3.</b>			
BEDROCK LOOKOUT			<b>Branch:</b>		<b>Division/Group</b>	
<b>2. Operational Period: DAY</b>			V		T	
Date/Time From: 09/25/2023 0700	MON	Date/Time To: 09/25/2023 2000	MON			
<b>4. Operations Personnel</b>						
<b>FIELD OPS</b>		TERRY WALTER DAN TRAPANESE (T)		<b>BRANCH DIRECTOR</b>		
				THOM TAYLOR BRIAN BATES (T)		
<b>AIR ATTACK SUPERVISOR</b>				<b>DIVISION/GROUP SUPERVISOR</b>		
				CAM CHAMBERS (LWD 9/27) KIP VAN DEWATER (LWD 9/30) (T)		
<b>5. Resources Assigned this Period</b>						
Strike Team / Task Force / Resource Designator		LWD	Leader	Number Persons	Drop Off PT./Time	Pick Up PT./Time
WTS2 E-289 HUGHES, PATRICK		10/02	TYLER PATRICK	1	LOOKOUT ICP/0700	LOOKOUT ICP/2000
SOFC O-674		09/26	GARY STRICKLAND	1	LOOKOUT ICP/0700	LOOKOUT ICP/2000
O-678 MEDIC 223		09/30	BENJAMIN SHOLL	1	LOOKOUT ICP/0700	LOOKOUT ICP/2000
O-962 EMT 126		10/02	SAGE LYFORD	1	LOOKOUT ICP/0700	LOOKOUT ICP/2000
REAF O-818		10/03	BRANDYN CHILD	1	LOOKOUT ICP/0700	LOOKOUT ICP/2000
REAF O-889		10/03	ERIC GJONNES	1	LOOKOUT ICP/0700	LOOKOUT ICP/2000
REAF O-965		10/06	ROB MICKEY	1	LOOKOUT ICP/0700	LOOKOUT ICP/2000
<b>6. Control Operations/Work Assignments:</b>						
<p><u>Task:</u> Patrol, monitor, and mop up any significant heat from DP78 to DP110. Backhaul unneeded equipment. Continue with log processing and hauling operations near DP77 and DP110. Chip slash and repair drainage along roads from DP78 to DP110. Repair dozerline using excavators from DP78 to DP110. Repair indirect contingency line along the 2649, 265, and 2657 roads.</p> <p><u>Purpose:</u> Aid in the completion of repair efforts to areas disturbed by wildfire suppression. Secure southern and eastern flank of the fire. To establish contingency line on the east side of the Lookout Fire.</p> <p><u>End State:</u> Stop southern and eastern progression of the Lookout Fire minimizing impacts to the HWY 126 corridor. Complete fire suppression repair activities east of DP78 and south of DP110. Follow actions outlined in the suppression repair plan. Contingency line is completed.</p>						
<b>7. Special Instructions:</b>						
S-826 Top Fill is located at the DP140 campground.						
<b>Needs:</b> EXC2 x 1; CHP2 x 1; EXC3 (w/blade) x 1						
<b>8. Division/Group Communication Summary</b>						
Function	Channel	RX Frequency N/W	RX Tone/NAC	TX Frequency N/W	TX Tone/NAC	Mode
COMMAND	SEE COM PLAN					
TACTICAL	SEE COM PLAN					
<b>9. Prepared By (Resource Unit Leader)</b>			<b>Approved By (Planning Section Chief)</b>		<b>Date</b>	<b>Time</b>
NICOLE LAGIOIA			MONICA RAMIREZ		09/24/2023	2000

**Division/Group Assignment List (ICS 204 WF)**  
Controlled Unclassified Information//Basic

<b>1. Incident Name:</b>			<b>3.</b>			
BEDROCK LOOKOUT			<b>Branch:</b>		<b>Division/Group</b>	
<b>2. Operational Period: DAY</b>			V		HORSE CREEK / POTHOLE	
Date/Time From: 09/25/2023 0700	MON	Date/Time To: 09/25/2023 2000				
<b>4. Operations Personnel</b>						
<b>FIELD OPS</b>		TERRY WALTER DAN TRAPANESE (T)		<b>BRANCH DIRECTOR</b>		THOM TAYLOR BRIAN BATES (T)
<b>AIR ATTACK SUPERVISOR</b>				<b>DIVISION/GROUP SUPERVISOR</b>		AMY MCCLAVE (LWD 9/25) CODY ST. CLAIR (LWD 9/27) (T)
<b>5. Resources Assigned this Period</b>						
Strike Team / Task Force / Resource Designator		LWD	Leader	Number Persons	Drop Off PT./Time	Pick Up PT./Time
TFLD O-781		09/28	REBECCA FRY	1	LOOKOUT ICP/0700	LOOKOUT ICP/2000
HEQB O-723		09/26	CHRIS COLT	1	LOOKOUT ICP/0700	LOOKOUT ICP/2000
*ENG6 E-366 AMERICAN		10/05	MATT MORRELL	3	LOOKOUT ICP/0700	LOOKOUT ICP/2000
WTS2 E-29 PARAGON (BDRK)		10/05	COLLIN ANDREW	1	LOOKOUT ICP/0700	LOOKOUT ICP/2000
DZR2 E-266 KISER & KISER (BDRK)		09/28	CLIFF KISER	2	LOOKOUT ICP/0700	LOOKOUT ICP/2000
EXC2 E-511 EVERY LIVESTOCK		10/04	PAT HANSEN	2	LOOKOUT ICP/0700	LOOKOUT ICP/2000
EXC4 E-434 AXSUS ENTERPRISES		10/02	ANGELA RICE	2	LOOKOUT ICP/0700	LOOKOUT ICP/2000
SKD2 E-274 BRINK BROTHERS		09/29	KYLE PATTERSON	2	LOOKOUT ICP/0700	LOOKOUT ICP/2000
FORW E-346 MILLER		09/30	JUSTIN ARMISTEAD	2	LOOKOUT ICP/0700	LOOKOUT ICP/2000
FEL1 E-647 DUSTIN CHANTRY		09/28	DUSTIN CHANTRY	2	LOOKOUT ICP/0700	LOOKOUT ICP/2000
FORW E-344 MILLER		10/01	EDDIE ORTIZ	2	LOOKOUT ICP/0700	LOOKOUT ICP/2000
CHSL E-700 ANVIL BUILDERS		10/07	JILLIAN FALGE	2	LOOKOUT ICP/0700	LOOKOUT ICP/2000
LOGL E-351 MILLER		09/27	PAUL DOLLAR	2	LOOKOUT ICP/0700	LOOKOUT ICP/2000
LOGT E-508 BRINK BROTHERS (BDRK)		09/30	MARK BRINK	2	LOOKOUT ICP/0700	LOOKOUT ICP/2000
LOGT E-528 MARK JONES TRUCKING #3		10/05	DAN COOPER	1	LOOKOUT ICP/0700	LOOKOUT ICP/2000
SOF1 O-674		09/26	GARY STRICKLAND	1	LOOKOUT ICP/0700	LOOKOUT ICP/2000
E-468 AMB2 309		10/03	KYLE SCHULTZ	2	LOOKOUT ICP/0700	LOOKOUT ICP/2000
O-825 MEDIC 231		09/30	LUKE EVERSOLE	1	LOOKOUT ICP/0700	LOOKOUT ICP/2000
O-823 EMT 124		10/01	DANIEL HILBERG	1	LOOKOUT ICP/0700	LOOKOUT ICP/2000
<b>8. Division/Group Communication Summary</b>						
Function	Channel	RX Frequency N/W	RX Tone/NAC	TX Frequency N/W	TX Tone/NAC	Mode
TACTICAL	SEE COM PLAN					
COMMAND	SEE COM PLAN					
<b>9. Prepared By (Resource Unit Leader)</b>			<b>Approved By (Planning Section Chief)</b>		<b>Date</b>	<b>Time</b>
NICOLE LAGIOIA			MONICA RAMIREZ		09/24/2023	2000



## Division/Group Assignment List (ICS 204 WF)

Controlled Unclassified Information//Basic

<b>1. Incident Name:</b>			<b>3.</b>			
BEDROCK LOOKOUT			<b>Branch:</b>		<b>Division/Group</b>	
<b>2. Operational Period: DAY</b>			V		HORSE CREEK / POTHOLE	
Date/Time From: 09/25/2023 0700      MON		Date/Time To: 09/25/2023 2000      MON				
<b>4. Operations Personnel</b>						
<b>FIELD OPS</b>		TERRY WALTER DAN TRAPANESE (T)		<b>BRANCH DIRECTOR</b>		THOM TAYLOR BRIAN BATES (T)
<b>AIR ATTACK SUPERVISOR</b>				<b>DIVISION/GROUP SUPERVISOR</b>		AMY MCCLAVE (LWD 9/25) CODY ST. CLAIR (LWD 9/27) (T)
<b>5. Resources Assigned this Period</b>						
Strike Team / Task Force / Resource Designator		LWD	Leader	Number Persons	Drop Off PT./Time	Pick Up PT./Time
REAF O-947		09/27	EMMA VANCE	1	LOOKOUT ICP/0700	LOOKOUT ICP/2000
REAF (T) O-948		09/27	ANGELICA BRIONES KNEISLY	1	LOOKOUT ICP/0700	LOOKOUT ICP/2000
<b>6. Control Operations/Work Assignments:</b>						
<p><u>Task:</u> Utilize equipment and crews to repair dozer/handlines and backhaul of unnecessary equipment. Utilize equipment to process and haul logs to designated locations. Utilize engines to patrol and maintain existing control lines.</p> <p><u>Purpose:</u> Repair and restore land affected by wildfire and suppression tactics and protecting any values at risk.</p> <p><u>End State:</u> Restore lands affected in accordance to approved repair plans.</p>						
<b>7. Special Instructions:</b>						
*Denotes resources for Initial Attack (IA)						
<b>Needs:</b>						
<b>8. Division/Group Communication Summary</b>						
Function	Channel	RX Frequency N/W	RX Tone/NAC	TX Frequency N/W	TX Tone/NAC	Mode
TACTICAL	SEE COM PLAN					
COMMAND	SEE COM PLAN					
<b>9. Prepared By (Resource Unit Leader)</b>			<b>Approved By (Planning Section Chief)</b>		<b>Date</b>	<b>Time</b>
NICOLE LAGIOIA			MONICA RAMIREZ		09/24/2023	2000

## Division/Group Assignment List (ICS 204 WF)

Controlled Unclassified Information//Basic

<b>1. Incident Name:</b>			<b>3.</b>			
BEDROCK LOOKOUT			<b>Branch:</b>		<b>Division/Group</b>	
<b>2. Operational Period:</b> <b>DAY</b>					<b>EQUIPMENT GROUP</b>	
Date/Time From: 09/25/2023 0700                      MON	Date/Time To: 09/25/2023 2000                      MON					
<b>4. Operations Personnel</b>						
<b>FIELD OPS</b>		TERRY WALTER DAN TRAPANESE (T)		<b>BRANCH DIRECTOR</b>		
				<b>DIVISION/GROUP SUPERVISOR</b>		
				THAD NIEBEL (LWD 9/27) GARY CROMBIE (LWD 9/26) (T)		
<b>5. Resources Assigned this Period</b>						
Strike Team / Task Force / Resource Designator	LWD	Leader	Number Persons	Drop Off PT./Time	Pick Up PT./Time	
TFLD O-912	10/01	DAVID MIRANDA	1	LOOKOUT ICP/0700	LOOKOUT ICP/2000	
TFLD (T) O-866	10/04	BRIAN SCHROEDER	1	LOOKOUT ICP/0700	LOOKOUT ICP/2000	
TFLD (T) O-968	10/02	DANIEL R SMITH	1	LOOKOUT ICP/0700	LOOKOUT ICP/2000	
HEQB (T) O-907	10/03	ERIC FRANTA	1	LOOKOUT ICP/0700	LOOKOUT ICP/2000	
HEQB (T) O-908	10/04	MARTHA DUDDLES	1	LOOKOUT ICP/0700	LOOKOUT ICP/2000	
DZR2 E-297 COUGAR RIDGE	10/10	RICK SOUL	2	LOOKOUT ICP/0700	LOOKOUT ICP/2000	
LOGL E-21 J & D	10/06	LJ SANOWSKI	2	LOOKOUT ICP/0700	LOOKOUT ICP/2000	
LOGL E-22 J & D	10/03	SAWYER LOGAN	2	LOOKOUT ICP/0700	LOOKOUT ICP/2000	
LOGL E-61 MARK JONES	09/27	MARK HELLENTHAL	2	LOOKOUT ICP/0700	LOOKOUT ICP/2000	
LOGL E-241 NORTHWEST	10/08	LEO MILLER	2	LOOKOUT ICP/0700	LOOKOUT ICP/2000	
LOGL E-352 BRINKS	10/07	CRAIG BRINK	2	LOOKOUT ICP/0700	LOOKOUT ICP/2000	
LOGL E-353 BRINK	09/25	JASON LARSON	2	LOOKOUT ICP/0700	LOOKOUT ICP/2000	
LOGL E-354 BRINK	10/02	ROBERT KRUMP	2	LOOKOUT ICP/0700	LOOKOUT ICP/2000	
LOGL E-513 BRINK BROTHERS (BDRK)	09/25	BRIAN WHITE	2	LOOKOUT ICP/0700	LOOKOUT ICP/2000	
LOGL E-675 EERA - BRINK BROTHERS	10/02	JASON LARSON	2	LOOKOUT ICP/0700	LOOKOUT ICP/2000	
LOGT E-355 MILLER	09/30	JACOB WEELEREYER	1	LOOKOUT ICP/0700	LOOKOUT ICP/2000	
LOGT E-356 MILLER	09/27	CARL WAKESFIELD	1	LOOKOUT ICP/0700	LOOKOUT ICP/2000	
LOGT E-358 BRINK BROTHERS INC	10/04	DYLON HILLSMAN	1	LOOKOUT ICP/0700	LOOKOUT ICP/2000	
LOGT E-472 MARK JONES	09/28	TOM DEEDON	1	LOOKOUT ICP/0700	LOOKOUT ICP/2000	
LOGT E-509 MARK JONES TRUCKING (BDRK)	09/29	TREVOR TRIMBLE	1	LOOKOUT ICP/0700	LOOKOUT ICP/2000	
LOGT E-522 MARK JONES TRUCKING	09/30	GREG ALFRIEDO	1	LOOKOUT ICP/0700	LOOKOUT ICP/2000	
LOGT E-523 MARK JONES TRUCKING (BDRK)	09/30	MICAH JACKSON	1	LOOKOUT ICP/0700	LOOKOUT ICP/2000	
<b>8. Division/Group Communication Summary</b>						
Function	Channel	RX Frequency N/W	RX Tone/NAC	TX Frequency N/W	TX Tone/NAC	Mode
TACTICAL	SEE COM PLAN					
COMMAND	SEE COM PLAN					
<b>9. Prepared By (Resource Unit Leader)</b>		<b>Approved By (Planning Section Chief)</b>		<b>Date</b>	<b>Time</b>	
NICOLE LAGIOIA		MONICA RAMIREZ		09/24/2023	2000	



## Division/Group Assignment List (ICS 204 WF)

Controlled Unclassified Information//Basic

<b>1. Incident Name:</b>			<b>3.</b>			
BEDROCK LOOKOUT			<b>Branch:</b>		<b>Division/Group</b>	
<b>2. Operational Period: DAY</b>						
Date/Time From: 09/25/2023 0700 MON		Date/Time To: 09/25/2023 2000 MON		<b>EQUIPMENT GROUP</b>		
<b>4. Operations Personnel</b>						
<b>FIELD OPS</b>		TERRY WALTER DAN TRAPANESE (T)		<b>BRANCH DIRECTOR</b>		
				<b>DIVISION/GROUP SUPERVISOR</b>		THAD NIEBEL (LWD 9/27) GARY CROMBIE (LWD 9/26) (T)
<b>5. Resources Assigned this Period</b>						
Strike Team / Task Force / Resource Designator		LWD	Leader	Number Persons	Drop Off PT./Time	Pick Up PT./Time
LOGT E-526 MARK JONES TRUCKING,1		09/30	RON ELLIOTT	1	LOOKOUT ICP/0700	LOOKOUT ICP/2000
LOGT E-527 MARK JONES TRUCKING 2		09/30	TERRY LEWIS	1	LOOKOUT ICP/0700	LOOKOUT ICP/2000
LOGT E-610 OMALLEY BROTHERS		09/30	NICK PEREZ	1	LOOKOUT ICP/0700	LOOKOUT ICP/2000
LOGT E-616 EERA - DEAN INNOVATIONS		09/30	BRETT LEE	1	LOOKOUT ICP/0700	LOOKOUT ICP/2000
LOGT E-617 EERA - DEAN INNOVATIONS		10/10	TOM FELDHAKE	1	LOOKOUT ICP/0700	LOOKOUT ICP/2000
LOGT E-618 EERA - DEAN INNOVATIONS		10/09	CHRIS JOSSER	1	LOOKOUT ICP/0700	LOOKOUT ICP/2000
LOGT E-676 EERA - MARK JONES		10/01	JIMMY HALL	1	LOOKOUT ICP/0700	LOOKOUT ICP/2000
LOGT E-677 EERA - MARK JONES		10/01	ED TURNER	1	LOOKOUT ICP/0700	LOOKOUT ICP/2000
TUBG E-542 BRINK BROTHERS		09/27	ROBERT BRINK	2	LOOKOUT ICP/0700	LOOKOUT ICP/2000
SOF2 O-588		09/26	DAVID HADE	1	LOOKOUT ICP/0700	LOOKOUT ICP/2000
O-682 EMT 122		09/30	ETHAN JARRETT	1	LOOKOUT ICP/0700	LOOKOUT ICP/2000
O-726 MEDIC 225		09/26	JOSH PUSKAR	1	LOOKOUT ICP/0700	LOOKOUT ICP/2000
<b>6. Control Operations/Work Assignments:</b>						
<u>Task</u> : Remove deck material to prepare lines for rehab. <u>Purpose</u> : Prepare lines for rehab. <u>End State</u> : Lines clear of deck materials.						
<b>7. Special Instructions:</b>						
<b>Needs:</b>          						
<b>8. Division/Group Communication Summary</b>						
Function	Channel	RX Frequency N/W	RX Tone/NAC	TX Frequency N/W	TX Tone/NAC	Mode
TACTICAL	SEE COM PLAN					
COMMAND	SEE COM PLAN					
<b>9. Prepared By (Resource Unit Leader)</b>			<b>Approved By (Planning Section Chief)</b>		<b>Date</b>	<b>Time</b>
NICOLE LAGIOIA			MONICA RAMIREZ		09/24/2023	2000

**Division/Group Assignment List (ICS 204 WF)**  
Controlled Unclassified Information//Basic

1. Incident Name:			3.			
BEDROCK LOOKOUT			Branch:		Division/Group	
2. Operational Period: DAY					LOOKOUT STAGING	
Date/Time From: 09/25/2023 0700 MON		Date/Time To: 09/25/2023 2000 MON				
4. Operations Personnel						
FIELD OPS		TERRY WALTER DAN TRAPANESI (T)		BRANCH DIRECTOR		
AIR ATTACK SUPERVISOR				STAGING AREA MANAGER		PAUL RYAN
5. Resources Assigned this Period						
Strike Team / Task Force / Resource Designator		LWD	Leader	Number Persons	Drop Off PT./Time	Pick Up PT./Time
EXC2 E-227 DEAN INNOVATIONS (BDRK)		10/07	MARK TYDEMAN	2	LOOKOUT ICP/0700	LOOKOUT ICP/2000
GRD1 E-484 TABLE MOUNTAIN FORESTRY		10/03	JUSTIN CODY	1	LOOKOUT ICP/0700	LOOKOUT ICP/2000
VROL E-471 DEAN INNOVATIONS		10/01	MICHAEL RHODEHAMEL	1	LOOKOUT ICP/0700	LOOKOUT ICP/2000
6. Control Operations/Work Assignments:						
Achieve efficiency with heavy equipment at Lookout Staging. Determine needs and right size for Lookout Staging area with equipment needed to achieve the best outcome for fire control objectives. Prepare Strube Flats for Willamette National Forest log decking.						
7. Special Instructions:						
Resources report to Lookout Staging 0800 each day. Staging resources need to monitor Command Channel.						
8. Division/Group Communication Summary						
Function	Channel	RX Frequency N/W	RX Tone/NAC	TX Frequency N/W	TX Tone/NAC	Mode
TACTICAL	SEE COM PLAN					
COMMAND	SEE COM PLAN					
9. Prepared By (Resource Unit Leader)			Approved By (Planning Section Chief)		Date	Time
NICOLE LAGIOIA			MONICA RAMIREZ		09/24/2023	2000



**Division/Group Assignment List (ICS 204 WF)**  
Controlled Unclassified Information//Basic

<b>1. Incident Name:</b>			<b>3.</b>			
BEDROCK LOOKOUT			<b>Branch:</b>		<b>Division/Group</b>	
<b>2. Operational Period:</b> DAY			PETE'S LAKE			
Date/Time From: 09/25/2023 0700 MON	Date/Time To: 09/25/2023 2000 MON					
<b>4. Operations Personnel</b>						
<b>FIELD OPS</b>		REGGIE BRAY		<b>BRANCH DIRECTOR</b>		
<b>AIR ATTACK SUPERVISOR</b>				<b>DIVISION/GROUP SUPERVISOR</b> JAMES HONANIE CHRIS BURFORD (T)		
<b>5. Resources Assigned this Period</b>						
Strike Team / Task Force / Resource Designator		LWD	Leader	Number Persons	Drop Off PT./Time	Pick Up PT./Time
HEQB O-3105		09/26	TODD BOWERS	1	WANOGA SPIKE/0700	WANOGA SPIKE/2000
ENG6 E-3113 WOODPECKER		10/01	ALEX WOLFF	3	WANOGA SPIKE/0700	WANOGA SPIKE/2000
ENG6 E-3114 STEELHEAD ENTERPRISES		10/01	JOHN TALOR	3	WANOGA SPIKE/0700	WANOGA SPIKE/2000
ENG6 E-3115 TERRENCE TITUS		09/25	THOMAS HAMILTON	3	WANOGA SPIKE/0700	WANOGA SPIKE/2000
WTT2 E-3104 TUB SPRINGS		09/28	LARRY MCNAMEE	1	WANOGA SPIKE/0700	WANOGA SPIKE/2000
MBM1 E-225 STATEWIDE		09/29	CEDRIC HAYDEN	2	WANOGA SPIKE/0700	WANOGA SPIKE/2000
MBM2 E-3013 J3 CONTRACTING		10/03	BILL GRANT	2	WANOGA SPIKE/0700	WANOGA SPIKE/2000
DO22 L/L 230 (PETE)			DAN LERMAN	1	WANOGA SPIKE/0700	WANOGA SPIKE/2000
DO22 L/L 231 (PETE)			DAN HAUSWOLD	1	WANOGA SPIKE/0700	WANOGA SPIKE/2000
SOF2 O-826		10/02	QUINCY CHUNG	1	WANOGA SPIKE/0700	WANOGA SPIKE/2000
E-3076 AMBO 311		09/28	SAM NAKANISHI	2	WANOGA SPIKE/0700	WANOGA SPIKE/2000
O-734 MEDIC 227		09/27	JES TEWS	1	WANOGA SPIKE/0700	WANOGA SPIKE/2000
<b>6. Control Operations/Work Assignments:</b>						
<p>Task: 1.) Continue to patrol/monitor Pete's Lake Fire. 2.) Remove fire infrastructure from Cascade Lakes Highway work areas.                  Purpose: 1.) To maintain situational awareness about fire activity and manage operational resources commensurate with fire potential. 2.) To prepare drop points and work areas for turn-over to local unit.                  End State: A secure holding feature that provides scenic value and fire resilience to the entities along the Cascade Lakes Highway.</p>						
<b>7. Special Instructions:</b>						
All resources available for local IA.						
<b>Needs:</b>						
<b>8. Division/Group Communication Summary</b>						
Function	Channel	RX Frequency N/W	RX Tone/NAC	TX Frequency N/W	TX Tone/NAC	Mode
TACTICAL	SEE COMM PLAN					
COMMAND	SEE COMM PLAN					
<b>9. Prepared By (Resource Unit Leader)</b>			<b>Approved By (Planning Section Chief)</b>		<b>Date</b>	<b>Time</b>
NICOLE LAGIOIA			MONICA RAMIREZ		09/24/2023	2000

# AIR OPERATIONS SUMMARY ICS-220

Incident Name / Number Lookout/Bedrock/Pete's Lake	Sunrise 0656	Pumpkin 1928	Sunset 1858	Time Prepared 1700	Date Prepared 9/24/23	Prepared By <i>Kyle Stamm</i>
General Remarks, Safety Notes, Hazards, Air Operations Special Equipment, etc.	* Be aware of retardant avoidance areas, 300ft away from waterways and bodies of water. * Sanitize Buckets before changing water sources. * All GPS is to be collected in DP - MM,MM * Be cognizant of all overhead and environmental hazards while working with Aircraft. * Clear drop arealine before initiating drop sequence. * Avoid power lines near Trail Bridge Dip site. * Order All Aircraft through Sun River Helibase. * Sun River Helibase costs for: lookout.helibase@gmail.com			Shutdown 1900	Operational Period - Date 9/25/23	Operational Period - Time 0700-2000
	Helibase Information Sun River Location 43 52.483 121 27.318 Phone 425-324-1368			TFR: Lookout 3/2925 Surface up to 9000 MSL 0800-2100  TFR: Pete's Lake 3/2926 Surface up to 10000 MSL 0800-2100	Name: N38HX Phone: 435-691-1637 Make/Model: AS350 B3 Location: Sun River HLB Request Procedure for These Aircraft: Communications on Command	

Incident Frequencies	RX	Tone	TX	Tone	AM/FM	Position	Name	Phone	EQUIPMENT/SUPPLIES
Lookout A/A (TFR)	118.0750		118.0750		AM	AOBD	Cory Dalberry	509-668-2801	Sun River HLB trailer
Pete's Lake A/A (TFR)	134.8500		134.8500		AM	AOBD-T	Kyle Slump	208-816-3141	E-176
A/G primary	167.0625		167.0625		FM	ASGS	Greg Scully	907-240-4660	
A/G secondary	169.2000		169.2000		FM	ASGS	Jason Brooks	907-482-0738	
DECK Sun River	168.3500		168.3500		FM	ASGS-T	Ben Crittenden	916-809-0410	
TOLC Sun River	164.8625		164.8625		FM	HEBM	(Sun River) Jeremy McIntosh	775-843-6976	
IA A/G White ODF	151.3100		151.3100		FM	HEBM-T	(Sun River) Rob Jennings	909-499-3082	
IA A/G 50 USFS	168.2875		168.2875		FM				
AIR GUARD	168.6250		168.6250		FM				

HELICOPTERS Sun River Helibase						HELICOPTERS Sun River Helibase							
FAA #	TYPE	Make/Model	Helibase	Start	Avail	Remarks	FAA #	TYPE	Make/Model	Helibase	Start	Avail	Remarks
N38HX	3	AS350B3E	Sun River	0700	0800	Short-haul - GACC Prepo							
N27HX	3	Bell 407	Sun River	0700	0800	Recon, Bucket							
N99WL	2	Bell 205++	Sun River	0700	0800	Rappel, Bucket							

UAS						FIXED WING AA/HLCO							
Call Sign	Type	Make/Model	Base	Start	Avail	Remarks	FAA #	Call Sign	Make/Model	Base	Start	Avail	Remarks

Call Sign	Type	Make/Model	Base	Start	Avail	Remarks



**INCIDENT RADIO COMMUNICATIONS PLAN (ICS 205)**

Incident Name  
**Lookout**

Date/Time Prepared  
**9/24/2023 1900**

Operational Period Date/Time  
**09/25/2023 - All Shifts**

Zn Ch	Function	Channel Name/Trunked Radio System Talkgroup	Assignment	RX Freq N or W	RX Tone/NAC	TX Freq N or W	TX Tone/NAC	Dev	Pwr	Mode	Remarks
1	COMMAND	CMD 1	ALL BRANCHES	169.5375	156.7	164.7125	156.7	N	H	A	Located East of Fire Area
2	COMMAND	CMD 2	ALL BRANCHES	168.4750	156.7	165.4000	156.7	N	H	A	Located NW of Fire Area
3	COMMAND	CMD 3	ALL BRANCHES	170.2875	156.7	163.6125	156.7	N	H	A	Located on Mt Bachelor/ Pete's Lake
4	COMMAND	CMD 4	ALL BRANCHES	171.0625	156.7	163.8250	156.7	N	H	A	Covers ICP + Hwy 126
5	COMMAND	CMD 5	ALL BRANCHES	170.6875	156.7	166.5750	156.7	N	H	A	Hoodoo Butte
6	TACTICAL	TAC 1	DIV A / C	168.0500	156.7	168.0500	156.7	N	H	A	Division Alpha & Division Charley
7	TACTICAL	TAC 2	Pothole/Horse Cr	168.2000	156.7	168.2000	156.7	N	H	A	Pothole / Horse Creek
8	TACTICAL	TAC 3	DIV H	168.6000	156.7	168.6000	156.7	N	H	A	Division Hotel / White Pine
9	TACTICAL	TAC 4	DIV L/Pete's Lake	168.2500	156.7	168.2500	156.7	N	H	A	Division Lima / Pete's Lake
10	TACTICAL	TAC 5	DIV P	166.7250	156.7	166.7250	156.7	N	H	A	Division Papa
11	TACTICAL	TAC 6	DIV T / Equip Grp	166.7750	156.7	166.7750	156.7	N	H	A	Division Tango / Equipment Grp
12	Forest Rptr.	Frissell	ALL DIVS	172.2500	103.5	164.9125	162.2	N	H	A	To Eugene Dispatch
13	Air-to-Ground	A/G PRI	ALL DIVS	167.0625	NONE	167.0625	NONE	N	H	A	Primary AIR TO GROUND
14	Air-to-Ground	A/G SEC	ALL DIVS	169.2000	NONE	169.2000	NONE	N	H	A	SECONDARY AIR TO GROUND
15	Air-to-Ground	VMED 29	MEDEVAC	155.3475	NONE	155.3475	156.7	N	H	A	Life Flight
16	EMERGENCY	AIRGUARD	EMERGENCY	168.6250	NONE	168.6250	110.9	N	H	A	EMERGENCY USE ONLY

Prepared By (Communications Unit Leader) Keith P. Brown      Incident Location: Forest / Unit / Jurisdiction:

County: Clatsop      State: OR      Latitude: " N      Longitude: W

All Lookout fire resources should use Clone 93 Lookout as of 9/3/2023. All Divisions, use Command repeater that's best in your location.

INCIDENT RADIO COMMUNICATIONS PLAN (ICS 205) Incident Name: **Bedrock** Date/Time Prepared: **9/24/2023 1900** Operational Period Date/Time: **09/25/2023 - All Shifts**

Zn Ch	Function	Channel Name/Trunked Radio System/ Talkgroup	Assignment	RX Freq N or W	RX Tone/NA/C	TX Freq N or W	Tx Tone/NA/C	Dev	Pwr	Mode A, D or M	Remarks
1	TACTICAL	TAC 1	North Repair	168.2500	136.5	168.2500	136.5	N	H	A	North Repair
2	TACTICAL	TAC 2	South Repair	166.7750	136.5	166.7750	136.5	N	H	A	South Repair
3	TACTICAL	TAC 3		166.7250	136.5	166.7250	136.5	N	H	A	UNASSIGNED
4	TACTICAL	TAC 4		168.6000	136.5	168.6000	136.5	N	H	A	UNASSIGNED
5	TACTICAL	TAC 5		168.2000	136.5	168.2000	136.5	N	H	A	UNASSIGNED
6	COMMAND	CMD 6	ALL BRANCHES	170.2500	136.5	162.8125	136.5	N	H	A	ALL - COMMAND (WEST) BEAR MTN
7	COMMAND	CMD 7	NOT IN USE	170.0000	136.5	166.6750	136.5	N	H	A	Not in Use
8	COMMAND	CMD 8	ALL BRANCHES	170.4125	136.5	165.9625	136.5	N	H	A	ALL - COMMAND (EAST) INDIAN FALL CRK
9	COMMAND	CMD 9	ALL BRANCHES	173.0375	136.5	167.3250	136.5	N	H	A	ALL - COMMAND (NE) PERNOT MTN
10	COMMAND	CMD 10	ALL BRANCHES	171.0375	136.5	162.1875	136.5	N	H	A	ALL - COMMAND (SOUTH) SINKER MTN.
11	COMMAND	CMD 11	NOT IN USE	170.3125	136.5	164.6000	136.5	N	H	A	Not in Use
12	TACTICAL	TAC 12	NOT IN USE	166.6000	136.5	166.6000	136.5	N	H	A	Not in Use
13	Air-to-Ground	A/G PRI	ALL DIVS	172.4625	NONE	172.4625	NONE	N	H	A	Do Not Use/Use Lookout A/G Pri
14	Air-to-Ground	A/G SEC	ALL DIVS	172.6750	NONE	172.6750	NONE	N	H	A	Do Not Use/Use Lookout A/G Sec
15	Air-to-Ground	VMED 29	MEDEVAC	155.3475	NONE	155.3475	156.7	N	H	A	Life Flight
16	EMERGENCY	AIRGUARD	EMERGENCY	168.6250	NONE	168.6250	110.9	N	H	A	EMERGENCY USE ONLY

Prepared By: (Communications Unit Leader) **Keith Brown - COM1** Lookout Communications (661) 349-1513

County: **Forest / Unit / Jurisdiction:** **Forest / Unit / Jurisdiction:** Latitude: " N Longitude: W  
 State: OR  
 6497600823840

All Divisions, use Command repeater that's best in your location.



INCIDENT RADIO COMMUNICATIONS PLAN (ICS 205)		Incident Name		Date/Time Prepared		Operational Period Date/Time					
		<b>FOREST IA</b>		9/24/2023 1900		09/25/2023 - All Shifts					
Zn Ch	Function	Channel Name/Trunked Radio System Talkgroup	Assignment	RX Freq N or W	RX Tone/NAC	TX Freq N or W	TX Tone/NAC	Dev	Pwr	Mode A, D or M	Remarks
1	TACTICAL	TAC 1	TAC 1	166.6000	136.5	166.6000	136.5	N	H	A	IA TAC
2	TACTICAL	TAC 2	RED NET	151.3400	156.7	151.3400	156.7	N	H	A	ODF RED NET
3	Air-to-Ground	A/G	White NET	151.3100	156.7	151.3100	156.7	N	H	A	ODF A/G
4	TACTICAL	PROJ MDL	PROJ MDL	168.7750	103.5	168.7750	103.5	N	H	A	USFS MIDDLE FORK PROJECT
5	COMMAND	TIMBER CK	TIMBER CK	170.4625	103.5	164.8250	131.8	N	H	A	USFS TIMBER CREEK
6	COMMAND	CMD 6	ALL BRANCES	170.2500	136.5	162.8125	136.5	N	H	A	BEDROCK COMMAND (WEST) BEAR MTN
7	COMMAND	CMD 7	Not In Use	170.0000	136.5	166.6750	136.5	N	H	A	Not In Use
8	COMMAND	LOWELL	LOWELL	170.4625	103.5	164.8250	110.9	N	H	A	USFS LOWELL
9	COMMAND	CMD 9	ALL BRANCES	173.0375	136.5	167.3250	136.5	N	H	A	BEDROCK COMMAND (NO) PERNOT MTN
10	COMMAND	CMD 10	ALL BRANCES	171.0375	136.5	162.1875	136.5	N	H	A	BEDROCK COMMAND (SOUTH) SINKER MTN.
11	Air-to-Ground	A/G 50	ALL DIVS	168.2875	NONE	168.2875	NONE	N	H	A	A/G PRIMARY - LOCAL
12	Air-to-Ground	A/G 59	ALL DIVS	169.1125	NONE	169.1125	NONE	N	H	A	A/G SECONDARY - LOCAL
13	Air-to-Ground	A/G PRI	ALL DIVS	172.4625	NONE	172.4625	NONE	N	H	A	AIR TO GROUND PRIMARY - BEDROCK
14	Air-to-Ground	A/G SEC	ALL DIVS	172.6750	NONE	172.6750	NONE	N	H	A	AIR TO GROUND SECONDARY - BEDROCK
15	Air-to-Ground	VMED 29	MEDEVAC	155.3475	NONE	155.3475	156.7	N	H	A	MEDICAL EVACUATION ONLY
16	EMERGENCY	AIRGUARD	EMERGENCY	168.6250	NONE	168.6250	110.9	N	H	A	EMERGENCY USE ONLY
Prepared By (Communications Unit Leader)											
Keith Brown - COML		Lookout Communications (661) 349-1513		Incident Location: Forest / Unit / Jurisdiction:		County: State: OR		Latitude: " N		Longitude: W	
		Keith P. Brown									
		64978038388440									

All Lookout fire resources should use Clone 93 as of 9/3/2023. All Divisions, use Command repeater that's best in your location.

**HEALTH AND SAFETY MESSAGE**  
*Pacific Northwest Incident Management Team 2*



**INCIDENT:** Lookout, Bedrock, Pete's Lake

**DATE:** 9/25/23

Psychological Safety

As a community we have invested a lot of energy into developing tools to protect us physically. What do you think was invented first, chainsaws or chaps? Let's not give MTDC a reason to develop a new style of chaps today.

Physical protection is not just about PPE compliance. We have a literal mountain of guides and checklists we abide by to protect us in the fire environment.

These policies, guides and checklists require professional judgement in application. This requires a healthy, acute, and focused mind to make good time critical decisions.

There has been a ground swell of support in recent years to increase our ability to support and care for those struggling psychologically. How do we create mental resiliency in our workforce?

Psychological safety refers to the ability to be safe with oneself, to rely on one's own ability to self-protect against any destructive impulses coming from within oneself or deriving from other people and to keep oneself out of harm's way. Hallmarks of a person with high psychological safety include self-efficacy, self-esteem, self-empowerment and the ability to relate to the world in healthy ways as traumas occur.

Plainly put, the emerging journey around psychological safety is not now, nor will ever be absent of burn-overs, broken trust, shaming, harassment, long-assignments, roll-overs, exclusion, exhausting travel, discrimination, training accidents, indifference, humiliation, flaming fronts, blow-ups, distain and the like. As Gandhi said, "peace is not the absence of conflict, but the ability to cope with it".

Recognize that we have a lot more work to do in this arena. Especially in comparison to the amount of energy we have invested in ensuring our physical protection. Perhaps we need to think of it as developing chaps for the brain?

Please read the "The Big Quiet" <https://www.fs.usda.gov/inside-fs/leadership/delving-big-quiet-video>.

Resources:

Casualty Assistance Program (503) 808-2063

National Suicide Prevention Lifeline 1-800-273-TALK (8255)

USFS Employee Assistance Program (833) 621-2989



## LOGISTICS MESSAGE

<b>COMMUNICATIONS</b>	Ph. 661-349-1513 Staffed 24 Hrs. (Lookout ICP)
-----------------------	------------------------------------------------

ALL LINE ORDERS ARE TO GO THROUGH COMMUNICATIONS. (See line order form)

### Lookout ICP/Base (Walterville, OR)

Location	38656 Kickbusch Lane Walterville, OR 97478
Supply	Hours: 0600 – 2200
Laundry	Hours 0600 -1000 & 1500-2200
Fuel Truck	Hours: 0600 - 2100
Communications	Hours: 24 hour service
Kitchen	Hours: 0600 - 0900 Breakfast, Lunch pick up at reefer Hours: 1800 - 2100 Dinner
Weed Wash	Hours: 0700 - 1400 & 1600 - 2000
Showers	El Dorado; Hours: 0500 - 1200 & 1400 - 2200
Facilities Message:	Please email ALL Facility orders to 2023.Lookout.Facilities@Gmail.com
Ground Support	Hours: 0600 - 2130
Saw Shop	Hours: 0600 – 1100 & 1600 – 2200 Phone: 208-481-2589

### Lookout Staging (Rock Quarry)

Location	54547 McKenzie HWY
Ground Support	Hours: 0600 - 2130
Fuel Truck	Hours: 0600 - 2100
Weed Wash	Hours: 0700 – 1400 & 1600 - 2000

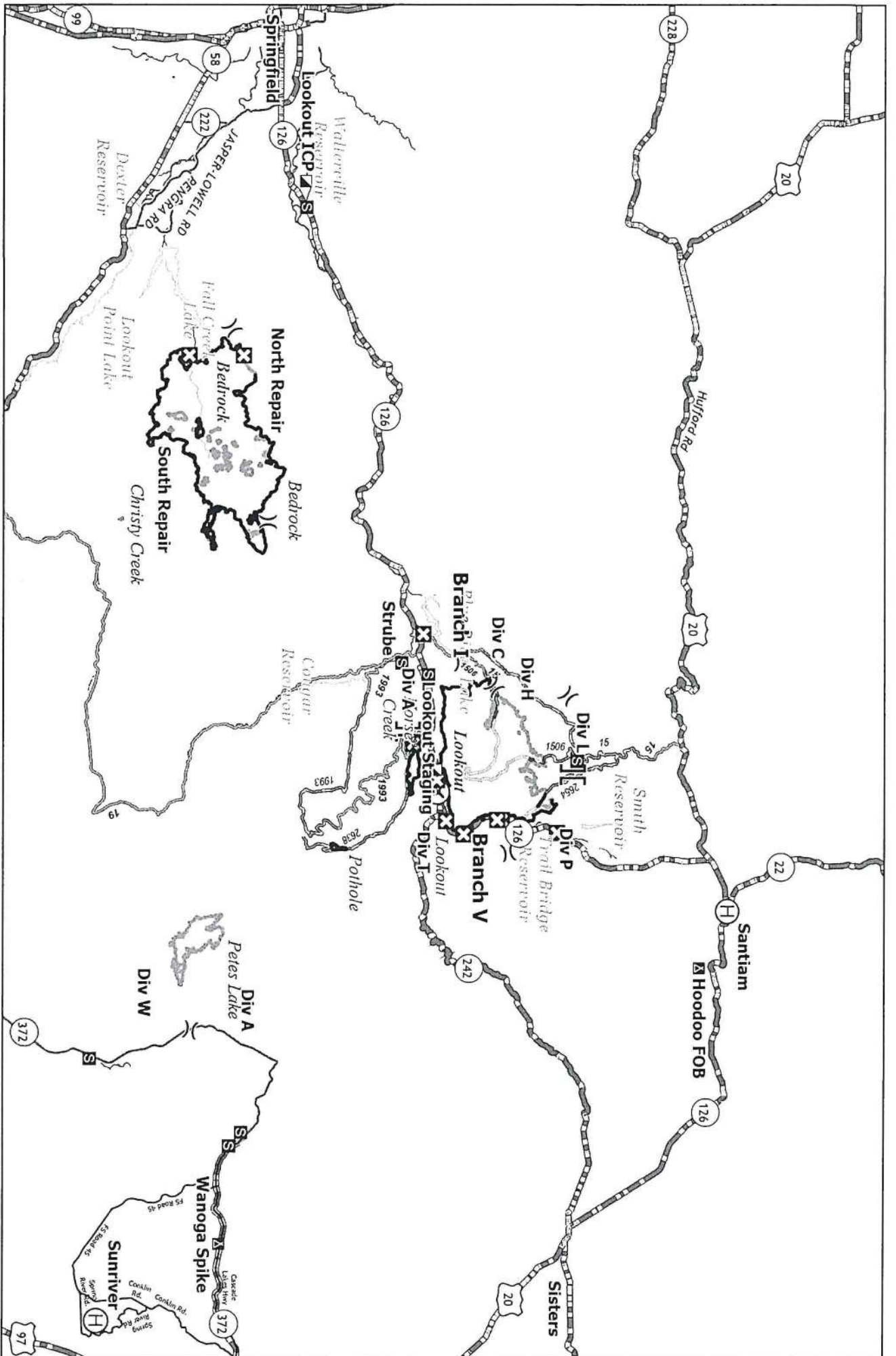
### Transportation Contacts for Ground Support

Lookout ICP	Eugene Quilter: 435-691-4130
Lookout Staging	Todd Griffin: 206-660-9644
HooDoo FOB	Mike Howard 541-602-0843

### Wanoga Spike

Location	HWY 46 – Cascade Lakes
Supplies & Como trailer	0700 – 1900 as needed

**ORDERING: Lookout: [2023.lookout.ordering@firenet.gov](mailto:2023.lookout.ordering@firenet.gov)**  
**Bedrock: [2023.bedrock.ordering@firenet.gov](mailto:2023.bedrock.ordering@firenet.gov)**  
**Pete's Lake: [2023.peteslake.ordering@firenet.gov](mailto:2023.peteslake.ordering@firenet.gov)**



### Transportation

Bedrock - ORWIF-230266  
 Lookout - ORWIF-230327  
 Petes Lake - ORWIF-230409

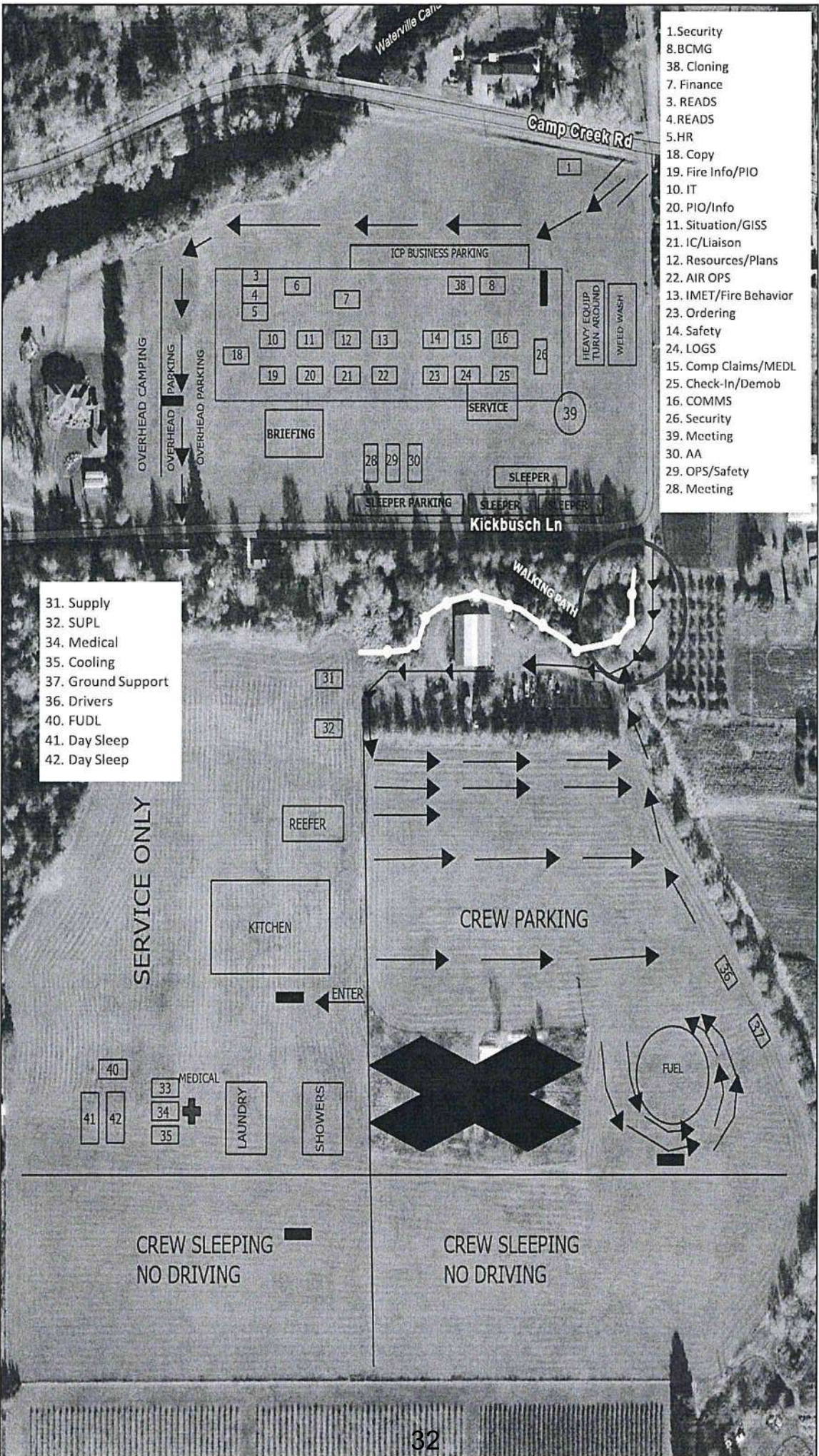
- ⊗ Airstrip or Airport
- ⊕ Helibase
- X Division Break
- II Branch Break
- ▣ Incident Command Post
- ▣ Closure
- ▣ Camp
- ▣ Staging Area
- ▣ Fire Area



**Lookout ICP :** 38601 Camp Creek Road, Waltherville, OR 97489  
 (14.5 Miles from Eugene, 19 min) - Weed Wash Station  
**Lookout Staging:** 54547 McKenzie Hwy, Blue River, OR 97413 - Weed Wash Station  
**Hoodoo FOB:** 27400 Big Lake Rd., Sisters, OR 97759 - Weed Wash Station  
**Wanoga Spike:** 15523 Cascade Lakes Hwy, La Pine, OR 97739







- 1. Security
- 8. BCMG
- 38. Cloning
- 7. Finance
- 3. READS
- 4. READS
- 5. HR
- 18. Copy
- 19. Fire Info/PIO
- 10. IT
- 20. PIO/Info
- 11. Situation/GISS
- 21. IC/Liaison
- 12. Resources/Plans
- 22. AIR OPS
- 13. IMET/Fire Behavior
- 23. Ordering
- 14. Safety
- 24. LOGS
- 15. Comp Claims/MEDL
- 25. Check-In/Demob
- 16. COMMS
- 26. Security
- 39. Meeting
- 30. AA
- 29. OPS/Safety
- 28. Meeting

- 31. Supply
- 32. SUPL
- 34. Medical
- 35. Cooling
- 37. Ground Support
- 36. Drivers
- 40. FUDL
- 41. Day Sleep
- 42. Day Sleep

SERVICE ONLY

CREW SLEEPING  
NO DRIVING



# Finance Message



Please email your CTRs & Shift Tickets to the fire listed on your resource order.

Lookout: 2023.lookout.finance@firenet.gov  
 Bedrock: 2023.bedrock.finance@firenet.gov  
 Petes Lake: 2023.peteslake.finance@firenet.gov

SUBJECT: *EQUIPMENT* for Contract Resources  
 SUBJECT: *TIME* for Fed, State, & Local Gov't Crews & Employees

Equipment 971-713-0359  
 Personnel 661-349-1530  
 Comp Claims 360-318-5211

Please indicate the name & number **of the fire where you are working** on all CTRs & Shift Tickets

LOOKOUT QH2A OR-WIF-230327	HORSE CREEK QLQ0 OR-WIF-230392	PETES LAKE QLV9 OR-WIF-230409	POTHOLE QLK2 OR-WIF-230393	BEDROCK QEW8 OR-WIF-230266
----------------------------------	--------------------------------------	-------------------------------------	----------------------------------	----------------------------------

PLEASE SUBMIT ALL DOCUMENTS IN PDF FORMAT

### Documents you must submit to finance

Government & Cooperator Resources	Contract Resources
<ul style="list-style-type: none"> <li>• <b>Upon Check-In:</b> Crew Manifest, Cooperative Agreement (if applies), AD Hire Letter, Resource Order</li> <li>• <b>Daily:</b> Crew Time Report (CTR), Shift Tickets</li> <li>• <b>Demob:</b> Signed OF288, Final Equipment Use Invoice (Cooperator)</li> </ul>	<ul style="list-style-type: none"> <li>• <b>Upon Check-In:</b> Resource Order, Full Contract/Agreement, Certifications (<i>if required</i>), Pre-Inspection</li> <li>• <b>Daily:</b> Shift Tickets, receipts (fuel issues, claims, hotels, etc.)</li> <li>• <b>Demob:</b> Contractor Evaluations, Final Shift Tickets and receipt(s) for Addition/Deductions, Post-Inspection, Final Signed Invoices</li> </ul>

Contract Vendors, if you have been here for 14 days or more and wish to have an interim payment processed, please see finance.



End of pay period - If you need a draft OF288, please email [2023.lookout.finance@firenet.gov](mailto:2023.lookout.finance@firenet.gov) with the subject "DRAFT FOR PAYROLL"

If you are listed below – please call, email or visit finance. 😊

Finance is open at 0600 so please feel free to stop in before briefing!

PERSONNEL		CONTRACTED RESOURCES			
BEDROCK		PETES LAKE		LOOKOUT	
O730	Anderson, Quinlan	E48	Conversion LLC	E366	Amercn Fire Company
O790	Leggins, Clyce	<b>BEDROCK</b>		E333	Axsus Enterprises
<b>LOOKOUT</b>		E14	10-Minuteman EMS	E-536	Axsus Enterprises
O875	Adamo, Orion	E468	4-Q Timber	E-335	Axsus Enterprises
O869	Baca, Matthew	E524	BFC Limited	C95	Big State Wildfire
O804	Baines, Mike	E532	BFC Limited LLC	E189	Brink Brothers
E427	Bliss Fire District	E450	Charles ireland	E152	Central Oregon Fire (COF SS)
O834	Boeder, Joshua	E450	Charles ireland	E152	Central Oregon Fire (COF SS)
E682	Brown, Brandon E652	E442	J & D Logging	C102	Franco Ref C-2
O937	Chitwood, CiCi	E544	J3 Contracting / AXSUS	C-103	Franco Reforestation C-1
O588	Hade, David	E370	LeeRoy Belloir & Sons LLC	E327	Heli-Fire Support Int'l.
O554	Jenman, Nadia	E523	Mark Jones	E299	Mark Jones Trucking
E633	Jones, Blake	E522	Mark Jones Trucking	E472	Mark Jones Trucking
E632	Martin, Keldon NCF E642	E509	Mark Jones Trucking	E652	Mark Jones Trucking
E615	Price, Brian IDPAF411	E509	Mark Jones Trucking	E524	Michael D Martines DBA Wildland Support Team
O964	Rocks, Dustin	E-41	Outback Firefighting	E355	Miller Timber
O763	Roy, Ian	E29	Paragon Water Tenders	E356	Miller Timber
O674	Strickland, Gary	E423	REMS 43 HART	E351	Miller Timber
O942	Strong, Paul	E-505	Saylor Construction	E14	No Drought
		E510	Todd Haley	E414	Pacific Ridgeline
		E431	Weyerhaeuser	E689	PatRick Environmental
		E666	Zeb's Tree Service LLC	E338	Shan Creek
		E225	Statewide		
		E-225	Statewide		
		C10003	TJ Forestry Contracting		

\* PLEASE SHOW YOUR LUNCH BREAK – IF NO BREAK SHOWN IT MUST BE JUSTIFIED IN COMMENTS

\* WHEN CLAIMING HAZARD PAY YOU MUST INCLUDE THE SUPPRESSION ACTION BEING PERFORMED. THIS INCLUDES OPERATIONS WHICH DIRECTLY SUPPORT CONTROL OF FIRE (E.G., ACTIVITIES TO EXTINGUISH THE FIRE, FIREFIGHTING, GROUND SCOUTING, SPOT FIRE PATROLLING, SEARCH AND RESCUE OPERATIONS, AND BACKFIRING). – PER PMS902 – YELLOW BOOK

## LOOKOUT and BEDROCK DEMOB LIST (09/25 TO 9/27)

If your Demob method of travel is by air, contact DMOB at (971) 762-8572 at least 72-hours in advance of your last work day.

### Day Before Your Demob:

Contact FINANCE 24 hours prior to give them a heads-up you are departing and turn in any outstanding CTR/Shift Ticket. Make sure they are SIGNED. Confirm there is no missing financial documentation.

### Day of Demob STEP 1:

Contact DMOB at 971-762-8572 or in person to obtain your Demob Check-Out Form (ICS 221) and to determine your specific next steps since we are pre-clearing personnel that do not have any supplies or communications equipment checked out.

### STEP 2:

Have your vehicle "weed washed" at Lookout ICP; Hoodoo FOB or at Rock Quarry Staging Area.

### STEP 3 (if directed by DMOB):

**SUPPLY** – see in person to return issued gear and leftover supplies

**COMMUNICATIONS** – see in person to return any communications equipment

**GROUND SUPPORT** – see in person to return incident rental vehicles, contractors to get an inspection, etc.

### STEP 4:

Proceed to, or call, FINANCE at (661) 349-1530 at Lookout ICP or (971) 713-0359 at Hoodoo FOB to complete time closeout process and receive signed OF-288 or OF-286

### STEP 5:

**Return to Demob for final closeout**

- Turn in any Unit Logs and Evaluations to Documentation Unit (Documentation Box).
- DMOB will verify check-out completion.
- Be prepared to address your actual departure date/time; your anticipated arrival date/time; and where you will be staying overnight if travel includes overnight stops.

## LOOKOUT

RO #	Item Code	Name	RO #	Item Code	Name
<b>September 25</b>			<b>September 26 Lookout Continuation</b>		
<b>EQUIPMENT</b>			<b>OVERHEAD</b>		
E-183	WTS2	STAN HARLAN	O-389	SCKN	PEEK, DINA
E-272	FEL1	TJ'S MECHANICAL	O-519	SEC1	THOMPSON, DEREK
E-290	WTS2	BIGFOOT	O-684	COMT	O'GRADY, SEAN
E-391	GRD1	GRANITE	O-692	SECG	TANNER, ALISA
E-460	GWT1	WICKIZER	O-695	SECM	PAINE, RICHARD
E-513	WTS2	RUNDELL	O-712	TFLD	RICHMOND, COLBEY
E-522	WTS2T	DICKSON TRUCKING	O-716	EQPM	QUILTER, EUGENE
E-583	STK1	TRAILS END BBQ CO	O-728	HEQB	FISCHER, JOSIAH
E-617	LOGT	DEAN INNOVATIONS -	O-729	HEQB	BUCK, DALLAS
E-620	CHP2	DIAMOND ROAD	O-734	EMPF	BESTPRACTICEMEDICINE
E-625	ENG3	UTUWF	O-808	EQTR	PRICE, DANA
E-667	WTS2	TIMBER TIPPER	O-826	SOF2	CHUNG, QUINCY
E-668	WTS2	COASTAL RANGE	O-899	TIME	JOHNSON, DARBY
E-681	EXC2	TJS MECHANICAL			
<b>OVERHEAD</b>			<b>September 27</b>		
O-545	EQTR	WARD, TIFFANY	<b>EQUIPMENT</b>		
O-554	EMTF	JENMAN, NADIA	E-620	CHP2	DIAMOND ROAD
O-700	TFLD	CRAIN, KEITH	E-633	ENG4	NVEKD
O-721	HEQB	KNAPP, KYLER	E-632	ENG6	NCF - ENG 642
O-722	DRIV	WADDELL, DEAN	E-590	STK2	ALVERNAZ CLAY
			E-342	AMB2	EMERGENCY RESPONSE
			E-240	LOGL	NORTHWEST
<b>September 26</b>			<b>OVERHEAD</b>		
<b>EQUIPMENT</b>			O-726	EMPF	WILDERNESSMEDICSINC
E-25	SKD1	RUSSELL	O-727	EMPF	MINUTEMANEMS
E-268	ENG4	AAA THUNDERBOLT	O-631	EQPM	ENOS, JONATHAN
E-631	ENG4	OR-MHF - 421	O-669	COMT	TURNER, JULIE
E-301	ENG3	HEK JONES	O-733	MEDL	ONTKO, NECOLE
E-585	PUP1	RUNNING H. RANCH	O-710	SEC1	CATOE, WILLIAM
E-189	CHP1	BRINK BROTHERS	O-725	ABRO	MCEWEN, CURT
			O-713	DIVS	CROMBIE, GARY
			O-915	HECM	MYERS, MARY PAIGE
			O-744	HEQB	HUMBACH, ADAM
			O-596	HEQB	SENSECCUA,



## LOOKOUT and BEDROCK DEMOB LIST (09/25 TO 9/27)

RO #	Item Code	Name
------	-----------	------

### September 27 Lookout Continuation

O-723	HEQB	COLT, CHRIS J
O-567	HEQB	WILSON, BARTHOLOMEW
O-911	TFLD	NORSKOG, DANIEL
O-730	TFLD	BASFORD, NATHAN
O-902	HEBM	JENNINGS, ROBERT
O-674	SOF2	STRICKLAND, GARY
O-750	PIOT	HAMILTON, ELIZABETH
O-588	SOF2	HADE, DAVID

## **BEDROCK**

### September 25

#### EQUIPMENT

E-370	WTS2	LEE ROY BELLOIR
E-405	STK2	M&M RESOURCES
E-544	CHP1	AXSUS ENTERPRISES
E-532	CHSL	BFC LIMITED
E-468	EXC2	4-Q TIMBER (BDRK)
E-323	WTS2	THOMAS H. IRELAND (BDRK)

#### OVERHEAD

O-731	TFLD	GJERDE, SEQUOIA JARED
-------	------	-----------------------

### September 26

#### EQUIPMENT

E-217	PUP1	RUNNING H RANCH
E-513	LOGL	BRINK BROTHERS (BDRK)
E-450	WTS2	CHARLES IRELAND
E-512	LOGL	BRINK BROTHERS (BDRK)
E-277	AMB2	ADVENTURE MEDICS 15 (BDRK)

#### OVERHEAD

O-730	TFLD	ANDERSON, QUINLAN
-------	------	-------------------

### September 27

#### EQUIPMENT

E-277	AMB2	ADVENTURE MEDICS 15 (BDRK)
E-217	PUP1	RUNNING H RANCH
E-450	WTS2	CHARLES IRELAND
E-512	LOGL	BRINK BROTHERS (BDRK)

#### OVERHEAD

O-730	TFLD	ANDERSON, QUINLAN
-------	------	-------------------

# FIRE INFORMATION

Phone: 541-215-6735

Email: 2023.Lookout@ firenet.gov

Inciweb: [inciweb.wildfire.gov/incident-information/orwif-lookout-fire](https://inciweb.wildfire.gov/incident-information/orwif-lookout-fire)  
[inciweb.wildfire.gov/incident-information/orwif-bedrock-fire](https://inciweb.wildfire.gov/incident-information/orwif-bedrock-fire)  
[inciweb.wildfire.gov/incident-information/orwif-petes-lake-fire](https://inciweb.wildfire.gov/incident-information/orwif-petes-lake-fire)

Facebook: [facebook.com/LookoutFire2023](https://facebook.com/LookoutFire2023)  
[facebook.com/BedrockFire2023](https://facebook.com/BedrockFire2023)  
[facebook.com/PetesLakeFireInfo](https://facebook.com/PetesLakeFireInfo)

## **Social Media – PAUSE Before Posting**

**PERCEPTION** – You are representing the jurisdictional agency and your home unit.

**AUTHORITY** – Be aware of federal and host agency social media policies.

**UNDERSTANDING** – Know the incident objectives. Never post negative, controversial, or unsafe messages to personal accounts. Ask a PIO/PAO or supervisor for clarification.

**SAFETY** – Do not compromise your safety while taking photos and always wear proper PPE. Never post photos of children, inmates, investigations, or cultural sites; be sensitive to burned structures and private information.

**EXPECTATION** – Share relevant content or photos with PIOs/PAOs to help tell the incident story

## **SHARE YOUR PHOTOS OR VIDEO**

Please share your photos and videos with the Information Officers by email: 2023.Lookout@ firenet.gov. Include your name for photo credit and include basic info about where the photo was taken.

## **LOST AND FOUND**

Located in the Information trailers at the Lookout ICP.



## *Training Message*

### ARE YOU ORDERED AS A TRAINEE?

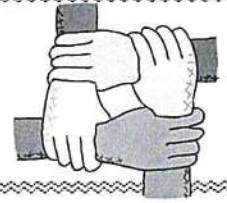
If you are ordered as a trainee, please sign up for the incident trainee program. You will be registered with the incident training specialist by filling out the questionnaire from the QR code in the IAP, please email scans or pictures of your incident qualification card and front cover of your task book to [Team10TNSP@yahoo.com](mailto:Team10TNSP@yahoo.com). During your time on this incident ensure you work with your trainer to complete the tasks you need evaluated if possible. Ensure your trainer evaluate your position task book tasks you are able to complete, and completes your position task book evaluation page as well as a performance evaluation (ICS-225). These forms are emailed to you once you complete the Trainee form. Upon completion of your assignment (***can be a couple days early to speed up demob***), please email, scans or pictures of your position task book evaluation and performance evaluation (ICS-225) to [Team10TNSP@yahoo.com](mailto:Team10TNSP@yahoo.com). These will be checked for accuracy, logged in the system, and sent on to your home unit training contact through email. I am working remotely. Please contact me if you have any further needs [Team10TNSP@yahoo.com](mailto:Team10TNSP@yahoo.com) or phone 360-490-5355, I look forward to serving you.

Training Specialist  
Neal Cox





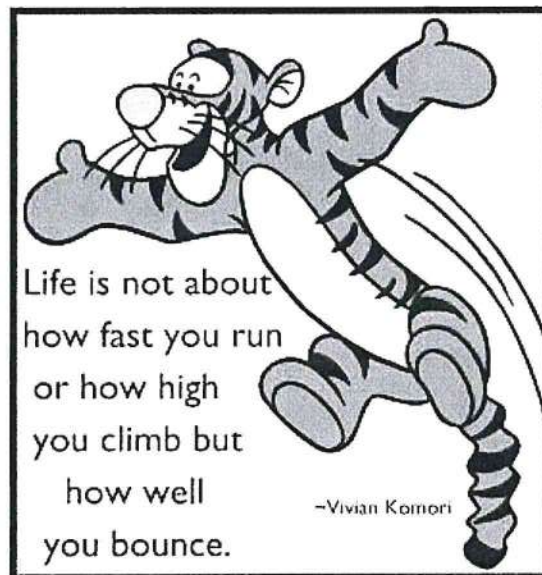
## Human Resource Message



### **RESILIENCE**

#### **APPLIED OPTIMISM**

**THE ABILITY TO RECOVER QUICKLY FROM  
DIFFICULTY**



**Teresa Smergut HRSP 541-263-2283**

**Mike Baines HRSP 724-678-6147**



# Resource Advisor Message - Lookout Fire

James Rudisill, Lead READ – Lookout & Bedrock Fire, 541-505-4773 thomas.rudisill@usda.gov

**With rain coming take a look at the pumps and any fuel storage. Please ensure containment trays are empty, with fresh pads. Use visqueen and p-cord to make a tent over the pump and fuel where possible. Driving around please look for plugged culverts and ditches, and make sure water can flow even if you can't do a full repair.**

## *Engineering and Roads*

- Do not track heavy equipment on paved roads without the proper mitigations (ie. street grousers, rubber mats, etc.).
- If any road issues or concerns are encountered, please contact a REAF.

## *Dozer Lines*

- Please work with Resource Advisors to clear proposed dozer lines.
- Please minimize the depth of the dozer line to the least extent required to meet objectives. Deep cuts are expensive, time consuming, and difficult to repair.

## *Heritage & Cultural*

All cultural resources and human remains are protected by law. **Leave them in place- no collecting.** Call Resource Advisor if cultural resource like arrowheads, flakes/chips, or historic artifacts like cans & bottles are found and they will investigate.

## *Noxious Weeds*

### WEED WASH STATION:

- The Weed Wash stations are operational and located at Strubb Flat, Kickbrush & Hoodoo
- Please use the weed wash upon arrival at the incident, and during demob
- Avoid the following weed: Slender False Brome and Spotted Knapweed

REDUCE THE SPREAD: Brush off packs & boots (especially laces) before leaving fire camp.



## *Tree Felling Operations*

Please keep equipment on road surface to the greatest extent possible

### Log Processing:

- Utilize existing openings and landings for decking, ditch lines/roadside is acceptable
- Process trees down to a 6" top (small end diameter). Use remaining for firewood logs, rehab, or chip
- Preferred Log Lengths (maximize length whenever possible): 41 foot Max – 17 foot Min
- 2' increments below 41', keeping logs as long as possible (41', 39', 37', etc....) Process unburnt trees on the unburnt side of the fireline. Process burnt trees on the burnt side of the fireline.
- Keep processed slash and tops out of decks and off roads
- If possible, sort decks by species and log lengths

### Snags and Hazard Trees:

Old growth is a key value. Limit snagging to operational needs & limit bucking to retain long bowls of large felled trees or snags.

## *Water Quality and Fisheries*

### AERIAL DIPPING:

- Aerial dipping should only occur at approved dip sites. Blue River Res. has a use restriction to facilitate dipping. Check with your REAF for approval of dipping sites.
- Be sure to wash buckets when new aerial resources arrive at the fire, when switching dips sites, or when returning to the fire from off forest.

### WATER DRAFTING:

- Limited Drafting is available at the bridge across Lookout Creek on the 1506 road in section 28. Check with the REAF for additional drafting locations as needed.
- Utilize fish screens when in fish bearing waterbodies (REAFs have these available).
- Maintain sufficient flow as to not dewater downstream reaches
- Utilize splash pans and absorbent pads. REAFs will assist if given the location.

### GROUND BASED RETARDANT APPLICATION:

- Provide a 75 foot buffer from riparian areas with live water when applying ground based retardant.

### CHIPPING STANDARDS:

- Provide a 30- foot buffer of no chipping at water crossings or culverts.
- Do not place chips into road ditch.
- Do not chip onto a steep slope where chips will slide back into the ditch.
- Broadcast chipped material, ensuring that chips are no more than 4" deep.

## Pete's Lake - -READ MESSAGE

### Shaded Fuel Break Specifications

- Treat off of road road shoulder as directed, leaving a minimum of one tree every 20 feet spacing

Preferred leave tree species (from most desired leave to least desired):

- **Whitebark pine – do not cut**
  - **Western White Pine – do not cut**
  - Spruce
  - Mountain Hemlock
  - Douglas-fir
  - Ponderosa Pine
  - White Fir
  - Lodgepole Pine
- READs**  
Jason Gritzner 541-408-1846  
Jason Wilcox 503-319-2408
- Preferred log length to a minimum 5 inch top:
    - 16' 6", 25', 29', 33'
  - 8 in. minimum trees to deck
  - **Max Cut 17 in. DBH**
  - Keep slash in landings a minimum 25 feet from dripline of live standing trees.
  - Log Landings size approximately 100ft. by 100 ft.; consult with READ on locations.
  - Tracked equipment no activity within 50 feet of live water.
  - Tracked equipment no activity within 30 feet of dry stream.
  - Avoid removing trees that have signs/blazes on them as much as possible

### Fuels Treatment Specifications around Recreation Sites (specified by READs)

- Thin trees less than 4 in. DBH as directed
- Avoid removing trees that have signs/blazes on them as much as possible
- 10 foot spacing between leave trees for 20 feet off roads
- 20 foot spacing between leave trees interior to 20 feet off roads
- Cut lodgepole pine first
- Flush cut stumps within 50 feet from Highway 46
- Do not leave sharp stumps in recreation area
- Retain trees along streams (don't cut any trees within 20 feet of wet or dry stream banks, unless deemed hazard trees or otherwise directed).

### Flagging Guide

**Blue: ATP (Area to Protect)...refer to flags for written specifications**

**Orange: End Haul Site location (slash, logs, chips, etc.)**

### Chipping Specifications

- Spread chipped material to a max depth of 3 inches unless otherwise directed to pile.



## HELICOPTER EXTRACTION OPERATIONS

The intent of helicopter insertion/extraction operations is to facilitate the movement of personnel to and from inaccessible areas. These operations are not meant to be a medical transport resource; life flight and ground transportation should always be ordered in addition to the extraction aircraft and crew.

### ORDERING:

- On-scene EMT and/or Incident within Incident IC determines that an extraction helicopter is needed and places the order through the pre-established procedures:
  - Division Supervisor
  - Incident Communications
  - Dispatch Center
- When ordering extraction aircraft provide the following information:
  - Location (Lat/Long) of patient
  - Known Hazards
  - Wind Speed and Direction
  - Terrain
  - Incident Updates

### SITE SELECTION:

- The helicopter crew will confirm the extraction location when they arrive on scene. However, a general rule is any clearing that is 10'x10' with visible sight lines to the sky is a suitable extraction site.
- If the terrain is steep, excavating a platform or shelf can make it easier for patient packaging.

QR Code-Short-haul Site Selection Video



### CONSIDERATIONS:

- Short-haul and hoist are safe and efficient operations for extracting injured personnel of any severity including "Green" patients.
- Ensure area is clear of non-essential items, hazards, and personnel.
- Rotor wash may affect overhead hazards and blowing dust/debris can create brown out conditions or influence fire behavior.
- Aerial Supervision is valuable for coordinating aviation medevac/extraction missions and should be ordered if available and not currently present.
- The aircrew will make the final assessment of the mission. Always have a contingency plan in case a helicopter cannot complete the request.

### DEFINITIONS:

**Rescue Hoist:** A cable winching device mounted to the helicopter that can lower/raise persons attached to a cable.

- Common cable lengths are 250-300 feet.

**Short-haul:** To insert or extract one or more persons suspended on a fixed line beneath a helicopter.

- Common short-haul line lengths are 100, 150, and 250 feet. The lines can also be connected for a longer line if the situation requires it.

Incident/Project Name		Operational Period						
<b>LOOKOUT/BEDROCK</b>		Date/Time:	<b>09/24 - 09/25 0700-0700</b>					
<b>Ambulance Services</b>								
Name	Complete Address	Phone & EMS Frequency	Advanced Life Support (ALS) Yes No					
AMBO 308 (Lookout Transport)	Blue River Reservoir	Command Channel	X					
Bend Fire Department	1212 SW Simpson Ave, Bend, OR 97702	911 / 541-693-6911	X					
Sister-Camp Sherman R.F.P.D	301 South Elm Street Sisters, OR		X					
Eugene/Springfield Fire (Lookout Transport)	1705 W. 2 <sup>nd</sup> Ave Eugene, OR	Lane County 911	X					
<b>Air Ambulance Services</b>								
Name	Phone	Type of Aircraft & Capability						
Life Flight – Eugene or Redmond	Order through Lookout Comms 800-232-0911	Critical Care Team of Paramedics and RN NVG, Freq: VMED 29						
Airlink - Bend	Order through Lookout Comms 800-353-0497	Critical Care Team of Paramedics and RN NVG, Freq: VMED 29						
Teton Short Haul	Ordered by Lookout Comms	ALS, Short Haul, not-dedicated to the incident – Daytime use only						
<b>Hospitals</b>								
Name Complete Address	GPS Datum – WGS 84 Coordinate Standard Degrees Decimal Minutes		Travel Time Air Gnd		Phone	Helipad Yes No		Level of Care Facility
	Lat:	Long:						
PeaceHealth Sacred Heart Medical Center 333 Riverbend Drive Springfield, OR 97477	44° 04.876' N	123° 01.588' W	10 min	20 min	541-222-6931	X		Level 2 Trauma
	OG64							
St Charles Bend 2500 NW Neff Rd Bend, OR 97701	44°04.1023'N	121°16.0537'W	45 mins	2 hours 20 min	541-382-4321	X		Level 2 Trauma
	54OR							
Legacy Emanuel Hospital 3001 N Gantenbein Ave Portland, OR 97227	45°32.6679'N	122°40.2933'W	45 mins	2 hours	(406) 329-5635	X		Level 1 Trauma Burn Center
	7OR5							
OHSU Hospital 3181 SW Sam Jackson Park Rd, Portland, OR 97239	45°29.9498'N	114°29.7 W	45 mins	2 hours	ER (503) 494-7550	X		Level 1 Trauma
	80ID							



## MEDICAL PLAN (ICS 206 WF)

Controlled Unclassified Information//Basic

Division   Branch   Group	Area Location Capability		
<b>ICP</b>	<b>EMS Personnel:</b>	Dave O'Brien MEDL 360-624-8023 Magenta Widner MEDL(t) 360-410-5433 Mari Bottoms MEDL(t) 541-403-1703 Ryan Herrera MEDL 253-297-0537 AMBO 310 - Ian Morse (EMPF) 423-596-1335	
	<b>Equipment Available on Scene:</b>	ALS Ambulance, Medical Yurt w/ OTC Meds	
	<b>Medical Emergency Channel:</b>	Lookout Communications	
	<b>Approved Helispot:</b>	N/A	
<b>BEDROCK NORTH REPAIR</b>	<b>EMS Personnel:</b>	REMS 1 - Sage Stewart (EMTF) 479-806-0860 AMBO 15 - Lucy Cummins (EMPF) 567-274-8888	
	<b>Equipment Available on Scene:</b>	ALS Ambulance, ALS UTV w/ Technical Rescue	
	<b>Medical Emergency Channel:</b>	Bedrock Communications	
	<b>Approved Helispot:</b>	H-2, H-5, Cascara Camp	
<b>BEDROCK SOUTH REPAIR</b>	<b>EMS Personnel:</b>	AMBO 10 - Andre Martoni (EMPF) 612-707-8496 EMT 119 - Nadia Jenman (EMTF) 816-666-0534	
	<b>Equipment Available on Scene:</b>	BLS, ALS Ambulance	
	<b>Medical Emergency Channel:</b>	Bedrock Communications	
	<b>Approved Helispot:</b>	H-5, H-10, H-32	
<b>BRANCH I DIV A/C</b>	<b>EMS Personnel:</b>	AMBO 308 - Ali Hammoudeh (EMPF) 973-968-9455 MEDIC 222 - Ritvik Chakraborty (EMPF) 678-308-3264	
	<b>Equipment Available on Scene:</b>	ALS, ALS Ambulance (Transport Only)	
	<b>Medical Emergency Channel:</b>	Lookout Communications	
	<b>Approved Helispot:</b>	H-1, H-2, H-20, H-30, H-40	
<b>BRANCH I DIV H</b>	<b>EMS Personnel:</b>	AMBO 304 - Russell Long-Thompson (EMPF) 514-965-1183 MEDIC 229 - Nathan Davis (EMPF) 816-844-5859 MEDIC 228 - Kyle Kemerer (EMPF) 650-868-2803	
	<b>Equipment Available on Scene:</b>	ALS, ALS Ambulance	
	<b>Medical Emergency Channel:</b>	Lookout Communications	
	<b>Approved Helispot:</b>	H-2, H-30, H-40	
<b>BRANCH I DIV L</b>	<b>EMS Personnel:</b>	AMBO 301 - Alexis Wasden (EMPF) 385-895-7738 MEDIC 226 - Steve McDowell (EMPF) 208-949-7936 MEDIC 221 - Derek Jordan (EMPF) 803-727-7096	
	<b>Equipment Available on Scene:</b>	ALS, ALS Ambulance	
	<b>Medical Emergency Channel:</b>	Lookout Communications	
	<b>Approved Helispot:</b>	H-40	

## MEDICAL PLAN (ICS 206 WF)

Controlled Unclassified Information//Basic

<b>BRANCH V DIV P</b>	<b>EMS Personnel:</b>	RAT 4 - Rick Bostian (EMPF) 479-422-0462 AMBO 306 - Stephen Spigelman (EMPF) 929-248-0242 MEDIC 224 - Noah Metzler (EMPF) 614-843-2836 EMT 123 - Ian Roy (EMTF) 707-508-9620	
	<b>Equipment Available on Scene:</b>	ALS, ALS Ambulance	
	<b>Medical Emergency Channel:</b>	Lookout Communications	
	<b>Approved Helispot:</b>	H-1, H-41	
<b>BRANCH V DIV T</b>	<b>EMS Personnel:</b>	MEDIC 223 - Benjamin Sholl (EMPF) 757-773-4688 EMT 126 - Sage Lyford (EMTF) 716-220-3755	
	<b>Equipment Available on Scene:</b>	ALS	
	<b>Medical Emergency Channel:</b>	Lookout Communications	
	<b>Approved Helispot:</b>	H-1	
<b>BRANCH V HORSE CREEK POTHOLE</b>	<b>EMS Personnel:</b>	AMBO 309 - Kyle Schulz (EMPF) 720-810-1776 MEDIC 231 - Luke Eversole (EMPF) 480-326-5676 EMT 124 - Daniel Hilberg (EMTF) 951-541-3351	
	<b>Equipment Available on Scene:</b>	ALS UTV w/ Technical Rescue, ALS Ambulance	
	<b>Medical Emergency Channel:</b>	Lookout Communications	
	<b>Approved Helispot:</b>	H-1	
<b>PETE'S LAKE</b>	<b>EMS Personnel:</b>	AMB 311- Sam Nakanishi (EMPF) 440-596-2043 MEDIC 227 - Jes Tews (EMPF) 775-745-4012	
	<b>Equipment Available on Scene:</b>	ALS, ALS Ambulance	
	<b>Medical Emergency Channel:</b>	Lookout Communications	
	<b>Approved Helispot:</b>	H-3	
<b>EQUIPMENT GROUP</b>	<b>EMS Personnel:</b>	EMT 122 - Ethan Jarrett (EMTF) 479-312-0972	
	<b>Equipment Available on Scene:</b>	BLS	
	<b>Medical Emergency Channel:</b>	Lookout Communications	
	<b>Approved Helispot:</b>	H-1	
<b>HOODOO</b>	<b>EMS Personnel:</b>	Necole Ontko MEDL(t) 541-815-6365 AMB 307 - Jeffrey Kwiecien (EMPF) 570-394-2707	
	<b>Equipment Available on Scene:</b>	ALS w/ OTC Meds, ALS Ambulance	
	<b>Medical Emergency Channel:</b>	Lookout Communications	
	<b>Approved Helispot:</b>	N/A	
<b>SUN RIVER HELIBASE</b>	<b>EMS Personnel:</b>	MEDIC 225 - Josh Puskar (EMPF) 440-796-6903	
	<b>Equipment Available on Scene:</b>	ALS w/ OTC Meds	
	<b>Medical Emergency Channel:</b>	Lookout Communications	
	<b>Approved Helispot:</b>	Sun River Helibase	
<b>Prepared By (Med Unit Leader)</b>	<b>Date/Time</b>	<b>Reviewed By (Safety Officer)</b>	<b>Date/Time</b>
Dave O'Brien MEDL Magenta Widner MEDL(t)	09/23/2023 - 2000	<i>Marshall Brown</i> SOF1	09/23/2023 - 2000





## EMERGENCY PLAN INCIDENT WITHIN AN INCIDENT

### ON SCENE INCIDENT COMMANDER

In the event of an accident or medical incident of any size, your primary responsibility is to ENSURE that the victim(s) receive prompt and effective Triage, Treatment, Extrication and Transport.

- **ENSURE THE MEDICAL INCIDENT REPORT IN THE INCIDENT ACTION PLAN IS BEING USED AND FOLLOWED- \*IF DETERMINED TO BE A GREEN THAT REQUIRES TRANSPORT BACK TO CAMP OR TO A MEDICAL FACILITY, DO NOT DECLARE EMERGENCY TRAFFIC AND ONLY COMPLETE LINE 1-4 ON MEDICAL INCIDENT REPORT\*.**
- Conduct size-up of the incident nature of accident, number type of resources involved, latitude and longitude location (DD°MMM.MM format): notify incident communications center and supervisor, request assistance as needed.
- Order and coordinate medical and support response to the accident.
- Evaluate special needs (law enforcement, haz mat, etc.).
- Clear the command frequency if medical emergency, coordinate with incident communications and air attack for air medical transportation needs.
- Preserve and photograph the scene for accident investigation.
- Remain aware of surroundings and the status of the main incident (delegate personnel to monitor the main fire) to ensure safety of medical treatment personnel.
- Until relieved, supervise and manage all personnel involved at the incident scene.

# MEDICAL PLAN (ICS 206 WF)

Controlled Unclassified Information//Basic

## Medical Incident Report

**FOR A NON-EMERGENCY INCIDENT, WORK THROUGH CHAIN OF COMMAND TO REPORT AND TRANSPORT INJURED PERSONNEL AS NECESSARY.**

**FOR A MEDICAL EMERGENCY: IDENTIFY ON-SCENE INCIDENT COMMANDER BY NAME AND POSITION AND ANNOUNCE "MEDICAL EMERGENCY" TO INITIATE RESPONSE FROM IMT COMMUNICATIONS/DISPATCH.**

**Use the following items to communicate situation to communications/dispatch.**

**1. CONTACT COMMUNICATIONS / DISPATCH** (Verify correct frequency prior to starting report)

*Ex: "Communications, Div. Alpha. Stand-by for Emergency Traffic."*

**2. INCIDENT STATUS:** Provide incident summary (including number of patients) and command structure.

*Ex: "Communications, I have a Red priority patient, unconscious, struck by a falling tree. Requesting air ambulance to Forest Road 1 at (Lat./Long.) This will be the Trout Meadow Medical, IC is TFLD Jones. EMT Smith is providing medical care."*

Severity of Emergency / Transport Priority	<input type="checkbox"/> <b>RED / PRIORITY 1 Life or limb threatening injury or illness. Evacuation need is IMMEDIATE</b> <i>Ex: Unconscious, difficulty breathing, bleeding severely, 2<sup>o</sup> – 3<sup>o</sup> burns more than 4 palm sizes, heat stroke, disoriented.</i> <input type="checkbox"/> <b>YELLOW / PRIORITY 2 Serious Injury or illness. Evacuation may be DELAYED if necessary.</b> <i>Ex: Significant trauma, unable to walk, 2<sup>o</sup> – 3<sup>o</sup> burns not more than 1-3 palm sizes.</i> <input type="checkbox"/> <b>GREEN / PRIORITY 3 Minor Injury or illness. Non-Emergency transport</b> <i>Ex: Sprains, strains, minor heat-related illness.</i>	
Nature of Injury or Illness & Mechanism of Injury		<i>Brief Summary of Injury or Illness (Ex: Unconscious, Struck by Falling Tree)</i>
Evacuation Request		<i>Air Ambulance / Short Haul/Hoist Ground Ambulance / Other</i>
Patient Location		<i>Descriptive Location &amp; Lat. / Long. (WGS84)</i>
Incident Name		<i>Geographic Name + Medical (Ex: Trout Meadow Medical)</i>
On-Scene Incident Commander		<i>Name of on-scene IC of Incident within an Incident (Ex: TFLD Jones)</i>
Patient Care		<i>Name of Care Provider (Ex: EMT Smith)</i>

**3. INITIAL PATIENT ASSESSMENT:** Complete this section for each patient as applicable (start with the most severe patient)

Patient Assessment: See IRPG PAGE 106

Treatment:

**4. EVACUATION PLAN:**

Evacuation Location (if different): (Descriptive Location (drop point, intersection, etc.) or Lat. / Long.) Patient's ETA to Evacuation Location:

Helispot / Extraction Site Size and Hazards:

**5. ADDITIONAL RESOURCES / EQUIPMENT NEEDS:**

*Example: Paramedic/EMT, crews, immobilization devices, AED, oxygen, trauma bag, IV/fluid(s), splints, rope rescue, wheeled litter, HAZMAT, extrication*

**6. COMMUNICATIONS: Identify State Air/Ground EMS Frequencies and Hospital Contacts as applicable**

Function	Channel Name/Number	Receive (RX)	Tone/NAC *	Transmit (TX)	Tone/NAC *
COMMAND					
AIR-TO-GRND					
TACTICAL					

**7. CONTINGENCY: Considerations:** If primary options fail, what actions can be implemented in conjunction with primary evacuation method? Be thinking ahead..

**8. ADDITIONAL INFORMATION:** Updates/Changes, etc.

**REMEMBER:** Confirm ETAs of resources ordered. Act according to your level of training. Be Alert. Keep Calm. Think Clearly. Act Decisively.