

ORGANIZATION ASSIGNMENT LIST	
1. Incident Name	
Bedrock / Lookout / Horse Creek / Pothole / Pete's Lake	
2. Date 09/25/2023	3. Time 1800
4. Operational Period 09/26/23 0700 -- 2000	
5. Incident Commander and Staff	
Position	Name
Incident Commander	Jason Loomis / John Szulc (t) / Chris Hutsell (t)
Safety Officer	Marshall Brown / Rob Poyner / Mark Munns
Information Officer	Chris Barth / Mike Johnson / Kale Casey / Jacob Welsh (t)
Liaison Officer	Don Turner / Paul Strong / Kristen Bonanno (t)
Human Resources	Teresa Smergut / Mike Baines
Medical Unit Leader	Ryan Herrera / Magenta Widner (t) / Mari Bottoms (t)

6. Agency Representative	
Agency	Name
USFS AA	WIL - Darren Cross / Heath Perrine / Allen Hambrick / Sarah Clawson / Rebecca Brooke (t) DES - Kevin Larkin / Robert Gentry
BAER Team	John Chatel / Wendy Peterman (t)
ODF AA	Chris Cline
ODF Agency Rep	John Flannigan / Craig Pettinger
BLM AA	Dennis Teitzel
Lane County Captain	JD Mann (Bedrock) / Cliff Harrold (Lookout)
Giustina Land and Timber	Kenny Rose
Fruit Growers	Jim Crawford
Campbell Group	Jim Hunt
Weyerhaeuser Group	Albert Kastle / Jeanne Olson
HJ Andrews Exper. Forest	Mark Schultz
Lead READ	Joe Doerr

7. Planning Section	
Position	Name
Chief	Brenda Hallmark / Monica Ramirez (t) / Alyssa Dawson (t)
SITL	Matt Provencher / Jason Thivener / Emilie Bedard (t)
RESL	Nicole LaGioia
GISS	Mike Cibicki / Lexi Holder / William Olto / Chantelle Delay / Bryant Mecklem (t) / Tiffany Manger (t)
DOCL	Paula Knapp
DEMOB	Brenda Bramwell
SCKN	Dina Peek
FBAN	Drew Taylor
IMET	Ryan Walbrun / Brian Adams (t)
LTAN	Joe Hernandez (t)
TNSP	Neal Cox

8. Logistic Section	
Position	Name
Chief	Nick Swagger / Kent Koeller / Tony Mule (t)
Supply Unit	Jaime Chopp / Dave Cooper
Facilities Unit	Cliff Piper / Russel Hovey
Food Unit	Debra Foote / Jenny Martin
COML	Keith Brown

Ground Support	Carlos Velez / Duane Chatham / Michael Howard / Jeffrey Burdine (t)
ITSS	Jim Grace / Flint Buchman / Jeff Hixon
SECM	Tyler Smith
9. Operations Section	
Lead Ops	Sonny Caldwell
Field Ops	Terry Walter / Dan Trapanese (t)
Planning Ops	Brandon Lewis / Jacob Gear (t)
a. Branch Bedrock	
Branch Director	Chris Lundgren / Ken Foss (t)
Division North Repair	Wes Wentworth / Meg Fluharty (t)
Division South Repair	Ted Piehl / Shane Orser (t)
b. Branch I	
Branch Director	Sam Tacchini / Josh Verellen (t)
Division A / C	Eric Kiehn
Division H	Zane Brown / Brian Bradbury (t)
Division L	Darek Pepple
c. Branch V	
Branch Director	Thom Taylor / Brian Bates (t)
Division P	Thomas Goheen
Division T	Cam Chambers / Kip Van DeWater (t)
d. Equipment Group	
Division	Thad Niebel / Gary Crombie (t)
e. Lookout Staging	
Staging Manager	Paul Ryan
f. Pete's Lake	
Field Ops	Reggie Bray
Division	James Honanie / Chris Burford (t)
g. Air Operations Branch	
Branch Director	Cory Dolberry / Kyle Stump (t)
ASGS	Scully / Jason Books / Ben Crittenden

10. Finance Section	
Position	Name
Chief	Mariah Morris - Titus / Glenda Lindsay
Time Unit Leader	Linzy Scott / Eric Goddard (t)
Cost Unit Leader	Christy Graham
Equipment Time	Cynthia Sperling / Maria Trujillo / Dorothy Myers / William Devore / Miriam Hubbard (t)
Personnel Time	Shonni Nelson / Ana Bacoch (t) / JoAnne Gomez / Victoria Ramirez
Comp/Claims	Jessica McAloon / Amy Kenny (t)
Procurement	Juanita Dickson / Luis Carrillo (t)
ICPI	Doug Simler
COPA	Sonia Torres

Prepared by (Resource Unit Leader)
Nicole LaGioia



Fire Weather Forecast

Tuesday September 26, 2023



FORECAST NO: 63 **FIRE:** Bedrock/Lookout/Horse Creek/
Pothole/Pete's Lake

PREDICTION FOR: Tuesday, Sep 26, 2023 **UNIT:** Willamette N.F.

ISSUED: 2000, Sep 25, 2023 **Incident Meteorologist:** Brian Adams (T)

- **DISCUSSION:** Tuesday will be mostly dry with a few widely scattered to isolated showers occurring across the region. More substantial rainfall arrives Tuesday evening into Wednesday morning, along with additional thunderstorm chances. Strong and gusty south to southwest winds also continue, along with cool temperatures.

TUESDAY:

- **WEATHER:** Partly to mostly cloudy. Very slight (20-30%) chance of widely scattered rain during the day, totals of 0.05-0.10" expected for any areas that do see showers.
- **WIND (20 FT):**
 - **Lookout:** Valleys/Lwr Slopes: S 5-10 mph through 1200, then SSW 7-11 mph with gusts to 15 mph. Ridges/Upper Slopes: SW 10-15 with gusts 20-25 mph.
 - **Petes Lake:** SW 10-15 with gusts 20-25 mph.
- **MAX TEMPERATURES:** 58-64 valleys and mid-slopes, 44-50 ridges and Pete's Lake.
- **MIN RH:**
 - **Lookout:** 55-65% **Petes Lake:** 60-70%
- **INVERSION:** Weak, mixed by 0900-1100. **MID HAINES:** 2.

TUESDAY NIGHT:

- **WEATHER:** Cloudy. 90% chance of rain overnight into Wednesday morning, starting between 2200-0200. 10-20% chance of thunderstorms. Rainfall totals of 0.25-0.50".
- **WIND (20 FT):**
 - **Lookout:** Valleys/Lwr Slopes: SW 9-14 mph with gusts to 20 mph. Ridges/Upr Slopes: SW 15-20 with gusts 25-30 mph.
 - **Petes Lake:** SW 15-20 mph with gusts to 30 mph.
- **MIN TEMPERATURES:** **Lookout:** 41-47. **Petes Lake:** 38-43
- **MAX RH:**
 - **Lookout:** 90-100% **Petes Lake:** 90-100%

WEDNESDAY:

- **WEATHER:** Mostly cloudy. 70% chance of rain in the morning, dropping to 30-40% after 1200. Rainfall amounts of 0.10-0.25" expected.
- **WIND (20 FT):**
 - **Lookout:** Valleys/Lwr Slopes: SW 10-15 mph with gusts to 20 mph through 1200, then W 6-10 mph. Ridges/Upr Slopes: SW 15-20 mph with gusts 25-30 mph through 1200, then W 8-12 mph with gusts to 20 mph.
 - **Petes Lake:** SW 10-15 with gusts to 30 mph through 1200, then W 9-14 with gusts to 20 mph..
- **MAX TEMPERATURES:** 54-60 valleys and mid-slopes, 43-49 ridges and Pete's Lake.
- **MIN RH:**
 - **Lookout:** 70-80% **Petes Lake:** 70-80%
- **INVERSION:** Weak to none. **MID HAINES:** 2.

Extended outlook: Thursday through Sunday: Additional chances for light rain in addition to cooler temperatures occur again on both Thursday and Friday. High pressure then begins to build in on Saturday and Sunday, leading to a warming and drying trend.

Sunrise: 07:04 PDT **Sunset:** 19:04 PDT

FIRE BEHAVIOR FORECAST

FORECAST NUMBER: 45	TYPE OF FIRE: Wildfire
FIRE NAME: Lookout/Bedrock/Horse Creek/Pothole/Pete's Lake	OPERATIONAL PERIOD: 09/26/2023
DATE ISSUED: 09/25/2023	TIME ISSUED: 2000 Hours
UNIT: OR-WIF, Willamette National Forest	SIGNED: ANDREW TAYLOR <small>Digitally signed by ANDREW TAYLOR Date: 2023.09.25 18:36:08 -07'00'</small>

INPUTS

WEATHER SUMMARY: *Cool and wet weather remains bringing good chances of precipitation to all of the fires over the next several days.*

FUELS:

Slight break in precipitation and clouds through most of the day with overall cooler and wetter weather remaining over the fire area. With moderately high RH values and cool temperatures, mixed with chances of rain, primarily overnight, fire behavior will remain minimal. Continued storms move into the area bringing continued chances of precipitation over the next couple of days.

OUTPUTS

FIRE BEHAVIOR GENERAL:

Primary fire activity will continue to be smoldering in duff and heavy down and dead fuels, with some areas of heat receiving enough weather to be extinguished this coming week. There may be some isolated creeping if there is a break in the cloud cover.



Based on Peak Wx and Fuels conditions:

- Fine Dead Fuel Moisture: 11-13%
- Probability of Ignition 10-20.
- Any kind of spotting will be through roll out of burning fuels

FIRE BEHAVIOR SPECIFIC:

Pete's Lake and Lookout Fire: Continued creeping under thicker canopies until fuels receive precipitation at ground level. Smoldering of dead and down fuels and duff. Heat will start to be extinguished. No fire growth expected.

Bedrock, Pothole, and Horse Creek: Continued consumption and smoldering of interior pockets with heat becoming extinguished throughout the next few days. No growth predicted.

IA – Any new starts will present low resistance to control with current weather conditions.

AIR OPERATIONS:

Winds are forecasted to increase, especially along ridges. There should be little to no air operations, but keep winds in mind.

SAFETY

Stay engaged and focused on safety in everything that you are doing with the decline in fire behavior. Incoming weather on burned areas introduces several hazards, and wet weather leads to poor driving conditions.



Division/Group Assignment List (ICS 204 WF)
Controlled Unclassified Information//Basic

1. Incident Name:				3.		
BEDROCK LOOKOUT				Branch: BEDROCK	Division/Group NORTH REPAIR	
2. Operational Period: DAY						
Date/Time From: 09/26/2023 0700 TUE		Date/Time To: 09/26/2023 2000 TUE				
4. Operations Personnel						
FIELD OPS		TERRY WALTER DAN TRAPANESE (T)		BRANCH DIRECTOR		CHRIS LUNDGREN KEN FOSS (T)
AIR ATTACK SUPERVISOR				DIVISION/GROUP SUPERVISOR		WES WENTWORTH (LWD 9/27) MEG FLUHARTY (LWD 10/1) (T)
5. Resources Assigned this Period						
Strike Team / Task Force / Resource Designator		LWD	Leader	Number Persons	Drop Off PT./Time	Pick Up PT./Time
TFLD O-738		09/27	CHRISTOPHER WENNOGLE	1	LOOKOUT ICP/0700	LOOKOUT ICP/2000
TFLD (T) O-596		09/26	KELLY SENSECQUA	1	LOOKOUT ICP/0700	LOOKOUT ICP/2000
HEQB O-732		09/27	JAIME MARISCAL	1	LOOKOUT ICP/0700	LOOKOUT ICP/2000
HEQB (T) O-812		10/01	JAYDEN CHYNOWETH	1	LOOKOUT ICP/0700	LOOKOUT ICP/2000
HEQB (T) O-814		09/27	JOSH VIERRIA	1	LOOKOUT ICP/0700	LOOKOUT ICP/2000
HC2 C-81 1ST CHOICE CONTRACTING (BDRK)		09/29	ENRIQUE MANZO	20	LOOKOUT ICP/0700	LOOKOUT ICP/2000
ENG6 E-662 FIRST STRIKE ENVIRONMENTAL		10/01	SPENCER BERLIER	3	LOOKOUT ICP/0700	LOOKOUT ICP/2000
EXC1 E-545 EERA - BFC LIMITED		09/29	NEIL FARTHING	2	LOOKOUT ICP/0700	LOOKOUT ICP/2000
EXC2 E-468 4-Q TIMBER		10/01	ANTHONY BALDWIN	2	LOOKOUT ICP/0700	LOOKOUT ICP/2000
EXC2 E-510 OUTBACK WILDFIRE		10/06	DAVE ELLIS	2	LOOKOUT ICP/0700	LOOKOUT ICP/2000
SKD1 E-299 MARK JONES		09/27	CASEY HUNTLEY	2	LOOKOUT ICP/0700	LOOKOUT ICP/2000
CHP1 E-550		10/05	DIANE DODGE	2	LOOKOUT ICP/0700	LOOKOUT ICP/2000
CHP2 E-481 BIG BARK CHIPPER (BDRK)		10/06	ETHAN PALMER	3	LOOKOUT ICP/0700	LOOKOUT ICP/2000
CHSL E-532 EERA - BFC LIMITED		10/08	FORTINO LARIOS	2	LOOKOUT ICP/0700	LOOKOUT ICP/2000
FRNT E-656 EERA - ROSE LOGGING		09/30	ROB MCCOLLOUGH	2	LOOKOUT ICP/0700	LOOKOUT ICP/2000
BHOE E-498 AXSUS ENTERPRISES		09/28	CORY ROBERTS	2	LOOKOUT ICP/0700	LOOKOUT ICP/2000
DUMP E-652 EERA - MARK JONES TRUCKING		10/01	JERRY WOLFORD	2	LOOKOUT ICP/0700	LOOKOUT ICP/2000
DUMP E-653 EERA - MARK JONES TRUCKING		10/01	BUDDY CLEGG	1	LOOKOUT ICP/0700	LOOKOUT ICP/2000
DUMP E-696 BRINKS LAND IMPROVEMENT		10/06	PHIL TELFORD	1	LOOKOUT ICP/0700	LOOKOUT ICP/2000
8. Division/Group Communication Summary						
Function	Channel	RX Frequency N/W	RX Tone/NAC	TX Frequency N/W	TX Tone/NAC	Mode
TACTICAL	SEE COM PLAN					
COMMAND	SEE COM PLAN					
9. Prepared By (Resource Unit Leader)			Approved By (Planning Section Chief)		Date	Time
NICOLE LAGIOIA			MONICA RAMIREZ		09/25/2023	2000

Division/Group Assignment List (ICS 204 WF)
Controlled Unclassified Information//Basic

1. Incident Name:				3.		
BEDROCK LOOKOUT				Branch: BEDROCK	Division/Group NORTH REPAIR	
2. Operational Period: DAY						
Date/Time From: 09/26/2023 0700 TUE		Date/Time To: 09/26/2023 2000 TUE				
4. Operations Personnel						
FIELD OPS		TERRY WALTER DAN TRAPANESE (T)		BRANCH DIRECTOR		CHRIS LUNDGREN KEN FOSS (T)
AIR ATTACK SUPERVISOR				DIVISION/GROUP SUPERVISOR		WES WENTWORTH (LWD 9/27) MEG FLUHARTY (LWD 10/1) (T)
5. Resources Assigned this Period						
Strike Team / Task Force / Resource Designator		LWD	Leader	Number Persons	Drop Off PT./Time	Pick Up PT./Time
DUMP E-697 BRINKS LAND IMPROVEMENT		10/07	BRET SCHMID	1	LOOKOUT ICP/0700	LOOKOUT ICP/2000
LOGP E-333 AXSUS		10/01	JESUS GUSMAN	2	LOOKOUT ICP/0700	LOOKOUT ICP/2000
LOGP E-334 AXSUS		10/01	JOSE SERANO	2	LOOKOUT ICP/0700	LOOKOUT ICP/2000
SOFR O-830		10/03	LUCAS DIXON	1	LOOKOUT ICP/0700	LOOKOUT ICP/2000
E-277 AMBO 15		10/13	LUCY CUMMINS	2	LOOKOUT ICP/0700	LOOKOUT ICP/2000
O-55 REMS 1		10/05	SAGE STEWART	4	LOOKOUT ICP/0700	LOOKOUT ICP/2000
REAF O-284		10/08	MIKE LARMAN	1	LOOKOUT ICP/0700	LOOKOUT ICP/2000
REAF O-805		10/02	ELLIOTT WHARTON	1	LOOKOUT ICP/0700	LOOKOUT ICP/2000
REAF O-818		10/04	BRANDYN CHILD	1	LOOKOUT ICP/0700	LOOKOUT ICP/2000
REAF O-896		10/04	ASHLEY DI LEONARDI	1	LOOKOUT ICP/0700	LOOKOUT ICP/2000
REAF O-965		10/06	ROB MICKEY	1	LOOKOUT ICP/0700	LOOKOUT ICP/2000
6. Control Operations/Work Assignments:						
<u>Task:</u> Continue chipping operations throughout the Division. Utilize engines to patrol fire perimeter and address smoke and areas of heat, as necessary.						
<u>Purpose:</u> Aid in the completion of repair efforts to areas disturbed by wildfire suppression.						
<u>End State:</u> Restore lands affected in accordance to approved repair plans.						
7. Special Instructions:						
Needs: HEQB x 2; TFLD x 1; FRNT x 1						
8. Division/Group Communication Summary						
Function	Channel	RX Frequency N/W	RX Tone/NAC	TX Frequency N/W	TX Tone/NAC	Mode
TACTICAL	SEE COM PLAN					
COMMAND	SEE COM PLAN					
9. Prepared By (Resource Unit Leader)			Approved By (Planning Section Chief)		Date	Time
NICOLE LAGIOIA			MONICA RAMIREZ		09/25/2023	2000

Division/Group Assignment List (ICS 204 WF)
Controlled Unclassified Information//Basic

1. Incident Name:				3.		
BEDROCK LOOKOUT				Branch: BEDROCK	Division/Group SOUTH REPAIR	
2. Operational Period: DAY						
Date/Time From: 09/26/2023 0700 TUE		Date/Time To: 09/26/2023 2000 TUE				
4. Operations Personnel						
FIELD OPS		TERRY WALTER DAN TRAPANESE (T)		BRANCH DIRECTOR		CHRIS LUNDGREN KEN FOSS (T)
AIR ATTACK SUPERVISOR				DIVISION/GROUP SUPERVISOR		TED PIEHL (LWD 9/27) SHANE ORSER (LWD 9/28) (T)
5. Resources Assigned this Period						
Strike Team / Task Force / Resource Designator		LWD	Leader	Number Persons	Drop Off PT./Time	Pick Up PT./Time
TFLD (T) O-911		09/26	DANIEL NORSKOG	1	LOOKOUT ICP/0700	LOOKOUT ICP/2000
TFLD (T) O-927		10/05	ARTURO LOZANO	1	LOOKOUT ICP/0700	LOOKOUT ICP/2000
HEQB O-732		09/28	BRIAN JOHNSON	1	LOOKOUT ICP/0700	LOOKOUT ICP/2000
HEQB O-838		10/01	BRYAN VESCE	1	LOOKOUT ICP/0700	LOOKOUT ICP/2000
HEQB (T) O-742		09/28	DEREK DOMIS	1	LOOKOUT ICP/0700	LOOKOUT ICP/2000
HEQB (T) O-874		10/04	LOGAN PARSLEY	1	LOOKOUT ICP/0700	LOOKOUT ICP/2000
FMOD O-795 HANDCCUTTING		09/29	CORY KEFFER	2	LOOKOUT ICP/0700	LOOKOUT ICP/2000
FMOD O-862 TOMS TIMBER		10/03	TRAVIS LOCKWOOD	2	LOOKOUT ICP/0700	LOOKOUT ICP/2000
FMOD O-918 PACIFIC RIDGELINE FORESTRY		10/04	JACOB MILLER	2	LOOKOUT ICP/0700	LOOKOUT ICP/2000
HC2 C-100 MR CONTRACTING C-2		09/30	MANUEL JIMENEZ	20	LOOKOUT ICP/0700	LOOKOUT ICP/2000
HC2 C-101 MR CONTRACTING C-1		09/30	TOMAS GUZMAN GARCIA	20	LOOKOUT ICP/0700	LOOKOUT ICP/2000
HC2 C-104 WILLAMETTE VALLEY REFOR. C-7		10/02	JAVIER GUZMAN	20	LOOKOUT ICP/0700	LOOKOUT ICP/2000
ENG4 E-1 J3 CONTRACTING (BDRK)		10/06	DAN TEGART	3	LOOKOUT ICP/0700	LOOKOUT ICP/2000
ENG4 E-664 FIREMOG		10/02	JACE HOFFMAN	3	LOOKOUT ICP/0700	LOOKOUT ICP/2000
ENG4 E-665 FIREMOG		10/01	MIKE PARENT	3	LOOKOUT ICP/0700	LOOKOUT ICP/2000
ENG4 E-666 TORRES CONTRACTING		10/02	JUAN TORRES	3	LOOKOUT ICP/0700	LOOKOUT ICP/2000
BHOE E-499 AXSUS ENTERPRISES		09/27	DAN GARLAND	2	LOOKOUT ICP/0700	LOOKOUT ICP/2000
EXC1 E-546 EERA - AXSUS ENTERPRISES		10/07	CHARLES MAINWARING	2	LOOKOUT ICP/0700	LOOKOUT ICP/2000
EXC2 E-227 DEAN INNOVATIONS (BDRK)		10/07	MARK TYDEMAN	2	LOOKOUT ICP/0700	LOOKOUT ICP/2000
8. Division/Group Communication Summary						
Function	Channel	RX Frequency N/W	RX Tone/NAC	TX Frequency N/W	TX Tone/NAC	Mode
TACTICAL	SEE COM PLAN					
COMMAND	SEE COM PLAN					
9. Prepared By (Resource Unit Leader)			Approved By (Planning Section Chief)		Date	Time
NICOLE LAGIOIA			MONICA RAMIREZ		09/25/2023	2000

Division/Group Assignment List (ICS 204 WF)
Controlled Unclassified Information//Basic

1. Incident Name:				3.		
BEDROCK LOOKOUT				Branch: BEDROCK	Division/Group SOUTH REPAIR	
2. Operational Period: DAY						
Date/Time From: 09/26/2023 0700 TUE		Date/Time To: 09/26/2023 2000 TUE				
4. Operations Personnel						
FIELD OPS		TERRY WALTER DAN TRAPANESE (T)		BRANCH DIRECTOR		CHRIS LUNDGREN KEN FOSS (T)
AIR ATTACK SUPERVISOR				DIVISION/GROUP SUPERVISOR		TED PIEHL (LWD 9/27) SHANE ORSER (LWD 9/28) (T)
5. Resources Assigned this Period						
Strike Team / Task Force / Resource Designator		LWD	Leader	Number Persons	Drop Off PT./Time	Pick Up PT./Time
EXC2 E-654 EARNEST HEATHER		10/01	MITCH GRIFFITH	2	LOOKOUT ICP/0700	LOOKOUT ICP/2000
EXC2 E-655 ZEB'S TREE SERVICE		10/01	CAMERON HOMES	2	LOOKOUT ICP/0700	LOOKOUT ICP/2000
CHP1 E-531 TOP NOTCH TREE		10/02	DAMIEN STATEN	2	LOOKOUT ICP/0700	LOOKOUT ICP/2000
CHP2 E-505 SAYLOR CONSTRUCTION (BDRK)		10/01	ETHAN PHILLIPS	3	LOOKOUT ICP/0700	LOOKOUT ICP/2000
CHSL E-700 ANVIL BUILDERS - 65349		10/07	JUSTIN BOYLE		LOOKOUT ICP/0700	LOOKOUT ICP/2000
SOFR O-830		10/03	LUCAS DIXON	1	LOOKOUT ICP/0700	LOOKOUT ICP/2000
E-14 AMBO 10 (BDRK)		10/14	ANDRE MARTONI	2	LOOKOUT ICP/0700	LOOKOUT ICP/2000
O-667 MEDIC 221		10/06	DEREK JORDAN	1	LOOKOUT ICP/0700	LOOKOUT ICP/2000
REAF O-284		10/08	MIKE LARMAN	1	LOOKOUT ICP/0700	LOOKOUT ICP/2000
ARCH O-807		10/01	JENNIFER HERNANDEZ	1	LOOKOUT ICP/0700	LOOKOUT ICP/2000
REAF O-818		10/04	BRANDYN CHILD	1	LOOKOUT ICP/0700	LOOKOUT ICP/2000
REAF O-896		10/04	ASHLEY DI LEONARDI	1	LOOKOUT ICP/0700	LOOKOUT ICP/2000
REAF O-965		10/06	ROB MICKEY	1	LOOKOUT ICP/0700	LOOKOUT ICP/2000
6. Control Operations/Work Assignments:						
<u>Task:</u> Utilize crews to mop up, continue dozer/handline repair and backhaul of unneeded equipment. Utilize heavy equipment to continue with dozer line and drainage repair. Utilize engines to patrol fire perimeter and address smoke and areas of heat, as necessary.						
<u>Purpose:</u> Restore lands impacted by wildfire and suppression tactics.						
<u>End State:</u> Lands restored.						
7. Special Instructions:						
*Denotes resources for Initial Attack (IA)						
Needs: TFLD x1						
8. Division/Group Communication Summary						
Function	Channel	RX Frequency N/W	RX Tone/NAC	TX Frequency N/W	TX Tone/NAC	Mode
TACTICAL	SEE COM PLAN					
COMMAND	SEE COM PLAN					
9. Prepared By (Resource Unit Leader)			Approved By (Planning Section Chief)		Date	Time
NICOLE LAGIOIA			MONICA RAMIREZ		09/25/2023	2000

Division/Group Assignment List (ICS 204 WF)
Controlled Unclassified Information//Basic

1. Incident Name:				3.		
BEDROCK LOOKOUT				Branch:		Division/Group
2. Operational Period: DAY				I		A / C
Date/Time From: 09/26/2023 0700 TUE		Date/Time To: 09/26/2023 2000 TUE				
4. Operations Personnel						
FIELD OPS		TERRY WALTER DAN TRAPANESE (T)		BRANCH DIRECTOR		SAM TACCHINI JOSH VERELLEN (T)
AIR ATTACK SUPERVISOR				DIVISION/GROUP SUPERVISOR		ERIC KIEHN (LWD 10/2)
5. Resources Assigned this Period						
Strike Team / Task Force / Resource Designator		LWD	Leader	Number Persons	Drop Off PT./Time	Pick Up PT./Time
TFLD (T) O-869		10/04	MATTHEW BACA	1	LOOKOUT ICP/0700	LOOKOUT ICP/2000
HEQB O-926		10/07	SETH GREENE	1	LOOKOUT ICP/0700	LOOKOUT ICP/2000
HEQB (T) O-871		10/03	CHASE SMITH	1	LOOKOUT ICP/0700	LOOKOUT ICP/2000
HEQB (T) O-872		10/03	BROCK HARMON	1	LOOKOUT ICP/0700	LOOKOUT ICP/2000
HC2 C-102 FRANCO REFORESTATION C-2		10/01	FRANCIS LEE FRANCO	20	LOOKOUT ICP/0700	LOOKOUT ICP/2000
ENG3 E-524 WILDLAND SUPRT TM		09/29	MIKE JARAMILLO	3	LOOKOUT ICP/0700	LOOKOUT ICP/2000
ENG4 E-633 NVEKD E1444		09/26	BLAKE JONES	4	LOOKOUT ICP/0700	LOOKOUT ICP/2000
ENG4 E-680 NORTH PACIFIC FORESTRY		10/03	TYLER PAYNE	3	LOOKOUT ICP/0700	LOOKOUT ICP/2000
FEL1 E-100 BOULDER RIDGE		10/11	SHANE MURPHY	2	LOOKOUT ICP/0700	LOOKOUT ICP/2000
EXC2 E-541 VALLEY TIMBER		10/02	NELSON TREAVOR	2	LOOKOUT ICP/0700	LOOKOUT ICP/2000
SOFR O-715.99		09/30	RYDER JONES	1	LOOKOUT ICP/0700	LOOKOUT ICP/2000
E-433 AMBO 308		10/01	ALI HAMMOUDEH	2	LOOKOUT ICP/0700	LOOKOUT ICP/2000
O-676 MEDIC 222		09/30	RITVIK CHAKRABORTY	1	LOOKOUT ICP/0700	LOOKOUT ICP/2000
REAF O-818		10/03	BRANDYN CHILD	1	LOOKOUT ICP/0700	LOOKOUT ICP/2000
REAF O-904		10/04	PATRICK CATALANO	1	LOOKOUT ICP/0700	LOOKOUT ICP/2000
REAF O-905		10/04	BENJAMIN HATHAWAY	1	LOOKOUT ICP/0700	LOOKOUT ICP/2000
REAF O-947		09/27	EMMA VANCE	1	LOOKOUT ICP/0700	LOOKOUT ICP/2000
REAF O-948		09/27	ANGELICA KNEISLY	1	LOOKOUT ICP/0700	LOOKOUT ICP/2000
6. Control Operations/Work Assignments:						
8. Division/Group Communication Summary						
Function	Channel	RX Frequency N/W	RX Tone/NAC	TX Frequency N/W	TX Tone/NAC	Mode
TACTICAL	SEE COM PLAN					
COMMAND	SEE COM PLAN					
9. Prepared By (Resource Unit Leader)			Approved By (Planning Section Chief)		Date	Time
NICOLE LAGIOIA			MONICA RAMIREZ		09/25/2023	2000

Division/Group Assignment List (ICS 204 WF)
Controlled Unclassified Information//Basic

1. Incident Name:				3.			
BEDROCK LOOKOUT				Branch:		Division/Group	
2. Operational Period: DAY				I		A / C	
Date/Time From: 09/26/2023 0700 TUE		Date/Time To: 09/26/2023 2000 TUE					
4. Operations Personnel							
FIELD OPS		TERRY WALTER DAN TRAPANESE (T)		BRANCH DIRECTOR		SAM TACCHINI JOSH VERELLEN (T)	
AIR ATTACK SUPERVISOR				DIVISION/GROUP SUPERVISOR		ERIC KIEHN (LWD 10/2)	
6. Control Operations/Work Assignments:							
<p><u>Task:</u> Continue log processing and repair work, as appropriate. Backhaul unnecessary equipment and supplies.</p> <p><u>Purpose:</u> Continue completion of repair efforts.</p> <p><u>End State:</u> Minimize impacts to Hwy 126 corridor. Minimize impacts to HJ Andrews, other infrastructure, and natural resources. Complete suppression repair activities.</p>							
7. Special Instructions:							
Needs: TFLD x 1							
8. Division/Group Communication Summary							
Function	Channel	RX Frequency N/W	RX Tone/NAC	TX Frequency N/W	TX Tone/NAC	Mode	
TACTICAL	SEE COM PLAN						
COMMAND	SEE COM PLAN						
9. Prepared By (Resource Unit Leader)			Approved By (Planning Section Chief)			Date	Time
NICOLE LAGIOIA			MONICA RAMIREZ			09/25/2023	2000

Division/Group Assignment List (ICS 204 WF)
Controlled Unclassified Information//Basic

1. Incident Name:				3.		
BEDROCK LOOKOUT				Branch:		Division/Group
2. Operational Period: DAY				I		H
Date/Time From: 09/26/2023 0700 TUE		Date/Time To: 09/26/2023 2000 TUE				
4. Operations Personnel						
FIELD OPS		TERRY WALTER DAN TRAPANESE (T)		BRANCH DIRECTOR		SAM TACCHINI JOSH VERELLEN (T)
AIR ATTACK SUPERVISOR				DIVISION/GROUP SUPERVISOR		ZANE BROWN (LWD 10/3) BRIAN BRADBURY (LWD 10/7) (T)
5. Resources Assigned this Period						
Strike Team / Task Force / Resource Designator		LWD	Leader	Number Persons	Drop Off PT./Time	Pick Up PT./Time
TFLD (T) O-873		10/04	KODI LESLIE	1	LOOKOUT ICP/0700	LOOKOUT ICP/2000
HEQB O-744		09/26	ADAM HUMBACH	1	LOOKOUT ICP/0700	LOOKOUT ICP/2000
FELB (T) O-875		10/04	ORION ADAMO	1	LOOKOUT ICP/0700	LOOKOUT ICP/2000
FELB (T) O-876		10/03	BRADY GLAUTHIER	1	LOOKOUT ICP/0700	LOOKOUT ICP/2000
FELB (T) O-877		10/03	FORREST CLARK	1	LOOKOUT ICP/0700	LOOKOUT ICP/2000
STEN O-951		10/08	ERNEST PRAX	1	LOOKOUT ICP/0700	LOOKOUT ICP/2000
FMOD O-794 FALLER MODULE		09/29	CHRIS REED	2	LOOKOUT ICP/0700	LOOKOUT ICP/2000
FMOD O-837 TOMS TIMBER		10/02	STEVEN JOSH	2	LOOKOUT ICP/0700	LOOKOUT ICP/2000
FMOD O-861 WEST COAST CUTTING		10/02	BALDO MACIEL	2	LOOKOUT ICP/0700	LOOKOUT ICP/2000
HC2 C-99 BIG BARK CHIPPERS #2		10/01	CHESTER FULBRIGHT	20	LOOKOUT ICP/0700	LOOKOUT ICP/2000
HC2 C-106 TOM FERY FARM C-1		10/03	SERAFIN GARCIA	20	LOOKOUT ICP/0700	LOOKOUT ICP/2000
HC2 C-107 J.C.OROZCO REFORESTATION C-5		10/06	JUAN OCHOA MORA	20	LOOKOUT ICP/0700	LOOKOUT ICP/2000
ENG6 E-660 FIRST STRIKE		10/01	ZANDER HAMILTON	3	LOOKOUT ICP/0700	LOOKOUT ICP/2000
ENG6 E-682 OR-DEF - 652		10/03	BRANDON R BROWN	6	LOOKOUT ICP/0700	LOOKOUT ICP/2000
SKD1 E-671 MKS LOGISTICS		10/01	SHANE HUFFMAN	2	LOOKOUT ICP/0700	LOOKOUT ICP/2000
SKD1 E-672 T2, INC		10/02	JAKE WILLE	2	LOOKOUT ICP/0700	LOOKOUT ICP/2000
FORW E-343 MILLER		09/28	SCOTT KELLOGG	2	LOOKOUT ICP/0700	LOOKOUT ICP/2000
FEL1 E-648 BFC LIMITED		09/28	SHERI ROTH	2	LOOKOUT ICP/0700	LOOKOUT ICP/2000
CHP1 E-335 AXSUS		09/27	MIKE FOWLER	2	LOOKOUT ICP/0700	LOOKOUT ICP/2000
8. Division/Group Communication Summary						
Function	Channel	RX Frequency N/W	RX Tone/NAC	TX Frequency N/W	TX Tone/NAC	Mode
TACTICAL	SEE COM PLAN					
COMMAND	SEE COM PLAN					
9. Prepared By (Resource Unit Leader)			Approved By (Planning Section Chief)		Date	Time
NICOLE LAGIOIA			MONICA RAMIREZ		09/25/2023	2000

Division/Group Assignment List (ICS 204 WF)
Controlled Unclassified Information//Basic

1. Incident Name:				3.		
BEDROCK LOOKOUT				Branch:		Division/Group
2. Operational Period: DAY				I		H
Date/Time From: 09/26/2023 0700 TUE		Date/Time To: 09/26/2023 2000 TUE				
4. Operations Personnel						
FIELD OPS		TERRY WALTER DAN TRAPANESE (T)		BRANCH DIRECTOR		SAM TACCHINI JOSH VERELLEN (T)
AIR ATTACK SUPERVISOR				DIVISION/GROUP SUPERVISOR		ZANE BROWN (LWD 10/3) BRIAN BRADBURY (LWD 10/7) (T)
5. Resources Assigned this Period						
Strike Team / Task Force / Resource Designator		LWD	Leader	Number Persons	Drop Off PT./Time	Pick Up PT./Time
CHP1 E-536 AXSUS ENTERPRISES		10/02	DAVID BERGQUIST	2	LOOKOUT ICP/0700	LOOKOUT ICP/2000
CHP1 E-689 PATRICK ENVIRONMENTAL		10/06	QUENTIN JOHNSON	2	LOOKOUT ICP/0700	LOOKOUT ICP/2000
CHP2 E-3508 BIG BARK		10/05	MATT DERUSHA	2	LOOKOUT ICP/0700	LOOKOUT ICP/2000
SOFR O-715.99		09/30	RYDER JONES	1	LOOKOUT ICP/0700	LOOKOUT ICP/2000
E-173 AMBO 304		10/04	RUSSELL LONG THOMPSON	1	LOOKOUT ICP/0700	LOOKOUT ICP/2000
O-762 MEDIC 228		09/27	KYLE KEMERER	1	LOOKOUT ICP/0700	LOOKOUT ICP/2000
O-789 MEDIC 229		10/05	NATHAN DAVIS	1	LOOKOUT ICP/0700	LOOKOUT ICP/2000
REAF O-818		10/03	BRANDYN CHILD	1	LOOKOUT ICP/0700	LOOKOUT ICP/2000
REAF O-904		10/04	PATRICK CATALANO	1	LOOKOUT ICP/0700	LOOKOUT ICP/2000
REAF O-905		10/04	BENJAMIN HATHAWAY	1	LOOKOUT ICP/0700	LOOKOUT ICP/2000
6. Control Operations/Work Assignments:						
<u>Task:</u> Continue log processing and repair work, as appropriate. Backhaul unnecessary equipment and supplies. Monitor fire progression.						
<u>Purpose:</u> Continue completion of repair efforts. Keep fire south of the 1508 Road.						
<u>End State:</u> Minimize impacts to HJ Andrews, other infrastructure, and natural resources. Complete suppression repair activities.						
7. Special Instructions:						
Limit traffic on 1506 Rd. No traffic allowed past DP12 on the 1506 Rd. Limit traffic on the 1508 Rd. Coordinate activities with HJ Andrews Staff.						
Needs: TFLD x 1						
8. Division/Group Communication Summary						
Function	Channel	RX Frequency N/W	RX Tone/NAC	TX Frequency N/W	TX Tone/NAC	Mode
TACTICAL	SEE COM PLAN					
COMMAND	SEE COM PLAN					
9. Prepared By (Resource Unit Leader)			Approved By (Planning Section Chief)		Date	Time
NICOLE LAGIOIA			MONICA RAMIREZ		09/25/2023	2000

Division/Group Assignment List (ICS 204 WF)
Controlled Unclassified Information//Basic

1. Incident Name:				3.		
BEDROCK LOOKOUT				Branch:		Division/Group
2. Operational Period: DAY				I		L
Date/Time From: 09/26/2023 0700 TUE		Date/Time To: 09/26/2023 2000 TUE				
4. Operations Personnel						
FIELD OPS		TERRY WALTER DAN TRAPANESE (T)		BRANCH DIRECTOR		SAM TACCHINI JOSH VERELLEN (T)
AIR ATTACK SUPERVISOR				DIVISION/GROUP SUPERVISOR		DAREK PEPPE (LWD 10/2)
5. Resources Assigned this Period						
Strike Team / Task Force / Resource Designator		LWD	Leader	Number Persons	Drop Off PT./Time	Pick Up PT./Time
TFLD O-864		10/04	CLINTON WADE	1	LOOKOUT ICP/0700	LOOKOUT ICP/2000
TFLD (T) O-906		10/03	C. YZQUIERDO	1	LOOKOUT ICP/0700	LOOKOUT ICP/2000
HEQB (T) O-870		10/03	TRAVIS POLLARD	1	LOOKOUT ICP/0700	LOOKOUT ICP/2000
FMOD O-917 THE ART OF FELLING TIMBER		10/04	MAIAH REINSMA	2	LOOKOUT ICP/0700	LOOKOUT ICP/2000
IHC C-97 ROOSEVELT IHC		09/27	LARRY MONEY	20	LOOKOUT ICP/0700	LOOKOUT ICP/2000
ENG6 E-506 TRI-STATE FIRE (BDRK)		09/29	STANLEY SMITH	3	LOOKOUT ICP/0700	LOOKOUT ICP/2000
*ENG6 E-683 OR-DEF - 636		10/03	KREG JACKSON	6	LOOKOUT ICP/0700	LOOKOUT ICP/2000
EXC2 E-690 J & D LOGGING & CONTRACTING			**SEE CHECK IN**		LOOKOUT ICP/0700	LOOKOUT ICP/2000
CHP1 E-189 BRINK BROTHERS		09/26	FRENTON EDWARDS	3	LOOKOUT ICP/0700	LOOKOUT ICP/2000
CHP1 E-555 MILLER TIMBER		09/27	TIM JONES	2	LOOKOUT ICP/0700	LOOKOUT ICP/2000
CHP2 E-620 DIAMOND ROAD MAINTENANCE		09/26	ROBERT PRATTE	3	LOOKOUT ICP/0700	LOOKOUT ICP/2000
CHSL E-686 AXSUS ENTERPRISES		10/07	SKYLAR WILSON	1	LOOKOUT ICP/0700	LOOKOUT ICP/2000
FORW E-595 MILLER TIMBER SERVICES		10/05	MIKE HONEYWELL	2	LOOKOUT ICP/0700	LOOKOUT ICP/2000
SOFR O-715.99		09/30	RYDER JONES	1	LOOKOUT ICP/0700	LOOKOUT ICP/2000
E-3 AMBO 301		10/03	ALEXIS WASDEN	2	LOOKOUT ICP/0700	LOOKOUT ICP/2000
O-727 MEDIC 226		10/03	STEVE MCDOWELL	1	LOOKOUT ICP/0700	LOOKOUT ICP/2000
REAF O-818		10/03	BRANDYN CHILD	1	LOOKOUT ICP/0700	LOOKOUT ICP/2000
REAF O-889		10/03	ERIC GJONNES	1	LOOKOUT ICP/0700	LOOKOUT ICP/2000
8. Division/Group Communication Summary						
Function	Channel	RX Frequency N/W	RX Tone/NAC	TX Frequency N/W	TX Tone/NAC	Mode
TACTICAL	SEE COM PLAN					
COMMAND	SEE COM PLAN					
9. Prepared By (Resource Unit Leader)			Approved By (Planning Section Chief)		Date	Time
NICOLE LAGIOIA			MONICA RAMIREZ		09/25/2023	2000

Division/Group Assignment List (ICS 204 WF)
Controlled Unclassified Information//Basic

1. Incident Name:				3.		
BEDROCK LOOKOUT				Branch: I	Division/Group L	
2. Operational Period: DAY						
Date/Time From: 09/26/2023 0700 TUE		Date/Time To: 09/26/2023 2000 TUE				
4. Operations Personnel						
FIELD OPS		TERRY WALTER DAN TRAPANESE (T)		BRANCH DIRECTOR		SAM TACCHINI JOSH VERELLEN (T)
AIR ATTACK SUPERVISOR				DIVISION/GROUP SUPERVISOR		DAREK PEPPE (LWD 10/2)
5. Resources Assigned this Period						
Strike Team / Task Force / Resource Designator		LWD	Leader	Number Persons	Drop Off PT./Time	Pick Up PT./Time
REAF O-904		10/04	PATRICK CATALANO	1	LOOKOUT ICP/0700	LOOKOUT ICP/2000
REAF O-905		10/04	BENJAMIN HATHAWAY	1	LOOKOUT ICP/0700	LOOKOUT ICP/2000
6. Control Operations/Work Assignments:						
<p><u>Task:</u> Continue backhaul, chipping, and other repair work, as appropriate.</p> <p><u>Purpose:</u> Continue completion of repair efforts. Keep fire south of 1508 Road.</p> <p><u>End State:</u> Impacts to natural resources and infrastructure are minimized. Fire contained within primary lines. Completion of suppression repair activities.</p>						
7. Special Instructions:						
<p>Contact DIVS prior to entry to reduce congestion on 1508 Rd.</p> <p>*Denotes resources for Initial Attack (IA)</p> <p>Needs:</p>						
8. Division/Group Communication Summary						
Function	Channel	RX Frequency N/W	RX Tone/NAC	TX Frequency N/W	TX Tone/NAC	Mode
TACTICAL	SEE COM PLAN					
COMMAND	SEE COM PLAN					
9. Prepared By (Resource Unit Leader)			Approved By (Planning Section Chief)		Date	Time
NICOLE LAGIOIA			MONICA RAMIREZ		09/25/2023	2000

Division/Group Assignment List (ICS 204 WF)
Controlled Unclassified Information//Basic

1. Incident Name:				3.		
BEDROCK LOOKOUT				Branch:		Division/Group
2. Operational Period: DAY				V		P
Date/Time From: 09/26/2023 0700 TUE		Date/Time To: 09/26/2023 2000 TUE				
4. Operations Personnel						
FIELD OPS		TERRY WALTER DAN TRAPANESE (T)		BRANCH DIRECTOR		THOM TAYLOR BRIAN BATES (T)
AIR ATTACK SUPERVISOR				DIVISION/GROUP SUPERVISOR		THOMAS GOHEEN (LWD 10/2)
5. Resources Assigned this Period						
Strike Team / Task Force / Resource Designator		LWD	Leader	Number Persons	Drop Off PT./Time	Pick Up PT./Time
TFLD (T) O-868		10/06	BRYAN MARKS	1	LOOKOUT ICP/0700	LOOKOUT ICP/2000
HEQB O-567		09/26	BART WILSON	1	LOOKOUT ICP/0700	LOOKOUT ICP/2000
HC2IA C-108 WIF MIDDLE FORK		10/07	ADAM DANIEL VROON	20	LOOKOUT ICP/0700	LOOKOUT ICP/2000
HC2 C-105 IRON MOUNTAIN FIREFIGHTING C-4		10/02	JOSE JUAN ZAVALA	20	LOOKOUT ICP/0700	LOOKOUT ICP/2000
ENG6 E-632 NCF-642		09/26	KELDON MARTIN	3	LOOKOUT ICP/0700	LOOKOUT ICP/2000
FORW E-607 AXSUS		09/29	BILL KLEIN	2	LOOKOUT ICP/0700	LOOKOUT ICP/2000
EXC2 E-614 FENTER LOGGING		10/02	PAUL FENTER	2	LOOKOUT ICP/0700	LOOKOUT ICP/2000
CHP1 E-688 WILD FIRE SERVICES		10/06	TIM LOGOZZO SR	3	LOOKOUT ICP/0700	LOOKOUT ICP/2000
CHP2 E-691 GRAYBACK FORESTRY		10/05	JARED COURNOYER	3	LOOKOUT ICP/0700	LOOKOUT ICP/2000
DUMP E-496 RUSSELLS MANAGEMENT (BDRK)		10/01	AUSTIN WILEY	1	LOOKOUT ICP/0700	LOOKOUT ICP/2000
LOGL E-62 MARK JONES		10/01	ROLAND STRUM	2	LOOKOUT ICP/0700	LOOKOUT ICP/2000
WTS2 E-450 CHARLES E. IRELAND		09/26	CRAIG VEY	1	LOOKOUT ICP/0700	LOOKOUT ICP/2000
SOFC O-674		09/26	GARY STRICKLAND	1	LOOKOUT ICP/0700	LOOKOUT ICP/2000
SOF2 O-826		09/25	QUINCY CHUNG	1	LOOKOUT ICP/0700	LOOKOUT ICP/2000
E-341 AMBO 306		10/03	STEPHEN SPIGELMAN	2	LOOKOUT ICP/0700	LOOKOUT ICP/2000
O-679 MEDIC 224		10/07	NOAH METZLER	1	LOOKOUT ICP/0700	LOOKOUT ICP/2000
O-763 EMT 123		10/04	IAN ROY	1	LOOKOUT ICP/0700	LOOKOUT ICP/2000
O-54 RAT 4		10/07	NEIL GUS MCCLELLAND	1	LOOKOUT ICP/0700	LOOKOUT ICP/2000
REAF O-818		10/03	BRANDYN CHILD	1	LOOKOUT ICP/0700	LOOKOUT ICP/2000
8. Division/Group Communication Summary						
Function	Channel	RX Frequency N/W	RX Tone/NAC	TX Frequency N/W	TX Tone/NAC	Mode
TACTICAL	SEE COM PLAN					
COMMAND	SEE COM PLAN					
9. Prepared By (Resource Unit Leader)			Approved By (Planning Section Chief)		Date	Time
NICOLE LAGIOIA			MONICA RAMIREZ		09/25/2023	2000

Division/Group Assignment List (ICS 204 WF)
Controlled Unclassified Information//Basic

1. Incident Name:				3.		
BEDROCK LOOKOUT				Branch:	Division/Group	
2. Operational Period: DAY						
Date/Time From: 09/26/2023 0700 TUE		Date/Time To: 09/26/2023 2000 TUE		V	P	
4. Operations Personnel						
FIELD OPS		TERRY WALTER DAN TRAPANESE (T)		BRANCH DIRECTOR THOM TAYLOR BRIAN BATES (T)		
AIR ATTACK SUPERVISOR				DIVISION/GROUP SUPERVISOR THOMAS GOHEEN (LWD 10/2)		
5. Resources Assigned this Period						
Strike Team / Task Force / Resource Designator		LWD	Leader	Number Persons	Drop Off PT./Time	Pick Up PT./Time
REAF O-889		10/03	ERIC GJONNES	1	LOOKOUT ICP/0700	LOOKOUT ICP/2000
REAF O-904		10/04	PATRICK CATALANO	1	LOOKOUT ICP/0700	LOOKOUT ICP/2000
REAF O-905		10/04	BENJAMIN HATHAWAY	1	LOOKOUT ICP/0700	LOOKOUT ICP/2000
6. Control Operations/Work Assignments:						
<p><u>Task:</u> Repair areas disturbed by fire suppression activities in order to meet ecological goals.</p> <p><u>Purpose:</u> Repair and restore land affected by wildfire and suppression tactics and protecting any values at risk.</p> <p><u>End State:</u> Fire is contained and impacts to values at risk and infrastructure along HWY 126 corridor are minimized.</p>						
7. Special Instructions:						
Needs: DIVS (t) x 1						
8. Division/Group Communication Summary						
Function	Channel	RX Frequency N/W	RX Tone/NAC	TX Frequency N/W	TX Tone/NAC	Mode
TACTICAL	SEE COM PLAN					
COMMAND	SEE COM PLAN					
9. Prepared By (Resource Unit Leader)			Approved By (Planning Section Chief)		Date	Time
NICOLE LAGIOIA			MONICA RAMIREZ		09/25/2023	2000

Division/Group Assignment List (ICS 204 WF)
Controlled Unclassified Information//Basic

1. Incident Name:				3.		
BEDROCK LOOKOUT				Branch:		Division/Group
2. Operational Period: DAY				V		T
Date/Time From: 09/26/2023 0700 TUE		Date/Time To: 09/26/2023 2000 TUE				
4. Operations Personnel						
FIELD OPS		TERRY WALTER DAN TRAPANESE (T)		BRANCH DIRECTOR		THOM TAYLOR BRIAN BATES (T)
AIR ATTACK SUPERVISOR				DIVISION/GROUP SUPERVISOR		CAM CHAMBERS (LWD 9/27) KIP VAN DEWATER (LWD 9/30) (T)
5. Resources Assigned this Period						
Strike Team / Task Force / Resource Designator		LWD	Leader	Number Persons	Drop Off PT./Time	Pick Up PT./Time
TFLD O-715.57		09/27	CODY L ST CLAIR	1	LOOKOUT ICP/0700	LOOKOUT ICP/2000
TFLD O-781		09/28	REBECCA FRY	1	LOOKOUT ICP/0700	LOOKOUT ICP/2000
TFLD O-865		10/04	JONATHAN MCCONNELL	1	LOOKOUT ICP/0700	LOOKOUT ICP/2000
TFLD (T) O-867		09/27	COLIN VICKERS	1	LOOKOUT ICP/0700	LOOKOUT ICP/2000
HEQB O-723		09/26	CHRIS COLT	1	LOOKOUT ICP/0700	LOOKOUT ICP/2000
HC2 C-103 FRANCO REFORESTATION C-1		10/01	ARMANDO CASTRO	20	LOOKOUT ICP/0700	LOOKOUT ICP/2000
ENG3 E-451 J3 CONTRACTING (BDRK)		10/03	ANTHONY TENAJILLA	3	LOOKOUT ICP/0700	LOOKOUT ICP/2000
ENG4 E-256 HI COUNTRY		10/02	SILAS PEREA	3	LOOKOUT ICP/0700	LOOKOUT ICP/2000
ENG4 E-479 J3 CONTRACTING (BDRK)		10/04	STEWART NICHOLS	3	LOOKOUT ICP/0700	LOOKOUT ICP/2000
ENG6 E-366 AMERICAN		10/05	MATT MORRELL	3	LOOKOUT ICP/0700	LOOKOUT ICP/2000
FEL1 E-280 BRINK BROTHERS (BDRK)		10/02	MATT SALES	2	LOOKOUT ICP/0700	LOOKOUT ICP/2000
EXC2 E-511 EVERY LIVESTOCK		10/02	PAT HANSEN	2	LOOKOUT ICP/0700	LOOKOUT ICP/2000
EXC2 E-681 TJS MECHANICAL CUTTING LLC		09/24	BLAKE ROBB	1	LOOKOUT ICP/0700	LOOKOUT ICP/2000
EXC4 E-434 AXSUS ENTERPRISES		10/02	ANGELA RICE	1	LOOKOUT ICP/0700	LOOKOUT ICP/2000
CHP1 E-538 ANVIL BUILDERS		09/27	JUSTIN BOYLE	2	LOOKOUT ICP/0700	LOOKOUT ICP/2000
CHP1 E-542 MOUNTAIN VIEW TREE		09/29	KAI ELROD	2	LOOKOUT ICP/0700	LOOKOUT ICP/2000
CHP1 E-673 WYEAST FORESTRY		10/02	ERIK NELSON	2	LOOKOUT ICP/0700	LOOKOUT ICP/2000
CHP2 E-692 EARTH INDUSTRIES		10/06	TONY WRIGHT	3	LOOKOUT ICP/0700	LOOKOUT ICP/2000
CHP2 E-693 MP FORESTRY		10/06	RAUL MORENO	3	LOOKOUT ICP/0700	LOOKOUT ICP/2000
CHSL E-684 AXSUS ENTERPRISES		10/07	RYAN JACKSON	1	LOOKOUT ICP/0700	LOOKOUT ICP/2000
8. Division/Group Communication Summary						
Function	Channel	RX Frequency N/W	RX Tone/NAC	TX Frequency N/W	TX Tone/NAC	Mode
COMMAND	SEE COM PLAN					
TACTICAL	SEE COM PLAN					
9. Prepared By (Resource Unit Leader)			Approved By (Planning Section Chief)		Date	Time
NICOLE LAGIOIA			MONICA RAMIREZ		09/25/2023	2000

Division/Group Assignment List (ICS 204 WF)
Controlled Unclassified Information//Basic

1. Incident Name:				3.		
BEDROCK LOOKOUT				Branch:		Division/Group
2. Operational Period: DAY				V		T
Date/Time From: 09/26/2023 0700 TUE		Date/Time To: 09/26/2023 2000 TUE				
4. Operations Personnel						
FIELD OPS		TERRY WALTER DAN TRAPANESE (T)		BRANCH DIRECTOR		THOM TAYLOR BRIAN BATES (T)
AIR ATTACK SUPERVISOR				DIVISION/GROUP SUPERVISOR		CAM CHAMBERS (LWD 9/27) KIP VAN DEWATER (LWD 9/30) (T)
5. Resources Assigned this Period						
Strike Team / Task Force / Resource Designator		LWD	Leader	Number Persons	Drop Off PT./Time	Pick Up PT./Time
LOGL E-240 NORTHWEST		09/28	BAIRD DRAGO	2	LOOKOUT ICP/0700	LOOKOUT ICP/2000
LOGL E-351 MILLER		09/27	PAUL DOLLAR	2	LOOKOUT ICP/0700	LOOKOUT ICP/2000
SOFC O-674		09/26	GARY STRICKLAND	1	LOOKOUT ICP/0700	LOOKOUT ICP/2000
SOF2 O-826		09/25	QUINCY CHUNG	1	LOOKOUT ICP/0700	LOOKOUT ICP/2000
E-468 AMB2 309		10/03	KYLE SHULTZ	2	LOOKOUT ICP/0700	LOOKOUT ICP/2000
O-678 MEDIC 223		09/30	BENJAMIN SHOLL	1	LOOKOUT ICP/0700	LOOKOUT ICP/2000
O-825 MEDIC 231		09/30	LUKE EVERSOLE	1	LOOKOUT ICP/0700	LOOKOUT ICP/2000
O-823 EMT124		10/01	DANIEL HILBERG	1	LOOKOUT ICP/0700	LOOKOUT ICP/2000
O-962 EMT 126		10/02	SAGE LYFORD	1	LOOKOUT ICP/0700	LOOKOUT ICP/2000
REAF O-818		10/03	BRANDYN CHILD	1	LOOKOUT ICP/0700	LOOKOUT ICP/2000
REAF O-889		10/03	ERIC GJONNES	1	LOOKOUT ICP/0700	LOOKOUT ICP/2000
REAF O-965		10/06	ROB MICKEY	1	LOOKOUT ICP/0700	LOOKOUT ICP/2000
REAF O-947		09/27	EMMA VANCE	1	LOOKOUT ICP/0700	LOOKOUT ICP/2000
REAF (T) O-948		09/27	ANGELICA KNEISLY	1	LOOKOUT ICP/0700	LOOKOUT ICP/2000
6. Control Operations/Work Assignments:						
<p><u>Task:</u> Utilize equipment and crews to repair dozer/handlines and backhaul of unnecessary equipment. Utilize equipment to process and haul logs to designated locations. Utilize engines to patrol and maintain existing control lines.</p> <p><u>Purpose:</u> Repair and restore land affected by wildfire and suppression tactics and protecting any values at risk.</p> <p><u>End State:</u> Restore lands affected in accordance to approved repair plans.</p>						
7. Special Instructions:						
S-826 Top Fill is located at the DP140 campground.						
Needs: EXC3 (w/blade) x 1						
8. Division/Group Communication Summary						
Function	Channel	RX Frequency N/W	RX Tone/NAC	TX Frequency N/W	TX Tone/NAC	Mode
COMMAND	SEE COM PLAN					
TACTICAL	SEE COM PLAN					
9. Prepared By (Resource Unit Leader)		Approved By (Planning Section Chief)		Date	Time	
NICOLE LAGIOIA		MONICA RAMIREZ		09/25/2023	2000	

Division/Group Assignment List (ICS 204 WF)
Controlled Unclassified Information//Basic

1. Incident Name:				3.		
BEDROCK LOOKOUT				Branch:		Division/Group
2. Operational Period: DAY				EQUIPMENT GROUP		
Date/Time From: 09/26/2023 0700 TUE		Date/Time To: 09/26/2023 2000 TUE				
4. Operations Personnel						
FIELD OPS		TERRY WALTER DAN TRAPANESE (T)		BRANCH DIRECTOR		
				DIVISION/GROUP SUPERVISOR		THAD NIEBEL (LWD 9/27) GARY CROMBIE (LWD 9/26) (T)
5. Resources Assigned this Period						
Strike Team / Task Force / Resource Designator		LWD	Leader	Number Persons	Drop Off PT./Time	Pick Up PT./Time
TFLD O-912		10/01	DAVID MIRANDA	1	LOOKOUT ICP/0700	LOOKOUT ICP/2000
TFLD (T) O-866		10/04	BRIAN SCHROEDER	1	LOOKOUT ICP/0700	LOOKOUT ICP/2000
TFLD (T) O-968		10/02	DANIEL R SMITH	1	LOOKOUT ICP/0700	LOOKOUT ICP/2000
HEQB (T) O-907		10/03	ERIC FRANTA	1	LOOKOUT ICP/0700	LOOKOUT ICP/2000
HEQB (T) O-908		10/04	MARTHA DUDDLES	1	LOOKOUT ICP/0700	LOOKOUT ICP/2000
DZR2 E-297 COUGAR RIDGE		10/10	RICK SOUL	2	LOOKOUT ICP/0700	LOOKOUT ICP/2000
FORW E-594 MILLER TIMBER SERVICES		09/27	CARSON DIXON	1	LOOKOUT ICP/0700	LOOKOUT ICP/2000
LOGL E-21 J & D		10/06	LJ SANOWSKI	2	LOOKOUT ICP/0700	LOOKOUT ICP/2000
LOGL E-22 J & D		10/03	SAWYER LOGAN	2	LOOKOUT ICP/0700	LOOKOUT ICP/2000
LOGL E-61 MARK JONES		09/27	MARK HELLENTHAL	2	LOOKOUT ICP/0700	LOOKOUT ICP/2000
LOGL E-241 NORTHWEST		10/08	LEO MILLER	2	LOOKOUT ICP/0700	LOOKOUT ICP/2000
LOGL E-352 BRINKS		10/07	CRAIG BRINK	2	LOOKOUT ICP/0700	LOOKOUT ICP/2000
LOGL E-354 BRINK		10/02	ROBERT KRUMP	2	LOOKOUT ICP/0700	LOOKOUT ICP/2000
LOGL E-675 EERA - BRINK BROTHERS		10/02	JASON LARSON	2	LOOKOUT ICP/0700	LOOKOUT ICP/2000
LOGT E-355 MILLER		09/30	JACOB WEELEREYER	1	LOOKOUT ICP/0700	LOOKOUT ICP/2000
LOGT E-356 MILLER		09/27	CARL WAKESFIELD	1	LOOKOUT ICP/0700	LOOKOUT ICP/2000
LOGT E-358 BRINK BROTHERS INC		10/04	DYLON HILLSMAN	1	LOOKOUT ICP/0700	LOOKOUT ICP/2000
LOGT E-472 MARK JONES		09/28	TOM DEEDON	1	LOOKOUT ICP/0700	LOOKOUT ICP/2000
LOGT E-509 MARK JONES TRUCKING (BDRK)		09/29	TREVOR TRIMBLE	1	LOOKOUT ICP/0700	LOOKOUT ICP/2000
LOGT E-522 MARK JONES TRUCKING		09/30	GREG ALFRIEDO	1	LOOKOUT ICP/0700	LOOKOUT ICP/2000
LOGT E-523 MARK JONES TRUCKING (BDRK)		09/30	MICAH JACKSON	1	LOOKOUT ICP/0700	LOOKOUT ICP/2000
LOGT E-526 MARK JONES TRUCKING,1		09/30	RON ELLIOTT	1	LOOKOUT ICP/0700	LOOKOUT ICP/2000
8. Division/Group Communication Summary						
Function	Channel	RX Frequency N/W	RX Tone/NAC	TX Frequency N/W	TX Tone/NAC	Mode
TACTICAL	SEE COM PLAN					
COMMAND	SEE COM PLAN					
9. Prepared By (Resource Unit Leader)			Approved By (Planning Section Chief)		Date	Time
NICOLE LAGIOIA			MONICA RAMIREZ		09/25/2023	2000

Division/Group Assignment List (ICS 204 WF)
Controlled Unclassified Information//Basic

1. Incident Name:				3.		
BEDROCK LOOKOUT				Branch:		Division/Group
2. Operational Period: DAY				EQUIPMENT GROUP		
Date/Time From: 09/26/2023 0700 TUE		Date/Time To: 09/26/2023 2000 TUE				
4. Operations Personnel						
FIELD OPS		TERRY WALTER DAN TRAPANESE (T)		BRANCH DIRECTOR		
				DIVISION/GROUP SUPERVISOR		THAD NIEBEL (LWD 9/27) GARY CROMBIE (LWD 9/26) (T)
5. Resources Assigned this Period						
Strike Team / Task Force / Resource Designator		LWD	Leader	Number Persons	Drop Off PT./Time	Pick Up PT./Time
LOGT E-527 MARK JONES TRUCKING 2		09/30	TERRY LEWIS	1	LOOKOUT ICP/0700	LOOKOUT ICP/2000
LOGT E-610 OMALLEY BROTHERS		09/30	NICK PEREZ	1	LOOKOUT ICP/0700	LOOKOUT ICP/2000
LOGT E-616 EERA - DEAN INNOVATIONS		09/30	BRETT LEE	1	LOOKOUT ICP/0700	LOOKOUT ICP/2000
LOGT E-617 EERA - DEAN INNOVATIONS		10/10	TOM FELDHAKE	1	LOOKOUT ICP/0700	LOOKOUT ICP/2000
LOGT E-646 EERA - WILDKAT TRUCKING		09/27	JODY LANCE	1	LOOKOUT ICP/0700	LOOKOUT ICP/2000
LOGT E-676 EERA - MARK JONES		10/01	JIMMY HALL	1	LOOKOUT ICP/0700	LOOKOUT ICP/2000
LOGT E-677 EERA - MARK JONES		10/01	ED TURNER	1	LOOKOUT ICP/0700	LOOKOUT ICP/2000
TUBG E-542 BRINK BROTHERS		09/27	ROBERT BRINK	2	LOOKOUT ICP/0700	LOOKOUT ICP/2000
SOF2 O-980			ERIC MESSENGER	1	LOOKOUT ICP/0700	LOOKOUT ICP/2000
O-682 EMT 122		09/30	ETHAN JARRETT	1	LOOKOUT ICP/0700	LOOKOUT ICP/2000
O-726 MEDIC 225		09/26	JOSH PUSKAR	1	LOOKOUT ICP/0700	LOOKOUT ICP/2000
6. Control Operations/Work Assignments:						
<u>Task:</u> Remove deck material to prepare lines for rehab.						
<u>Purpose:</u> Prepare lines for rehab.						
<u>End State:</u> Lines clear of deck materials.						
7. Special Instructions:						
Needs: LOGT (long) x 4						
8. Division/Group Communication Summary						
Function	Channel	RX Frequency N/W	RX Tone/NAC	TX Frequency N/W	TX Tone/NAC	Mode
TACTICAL	SEE COM PLAN					
COMMAND	SEE COM PLAN					
9. Prepared By (Resource Unit Leader)			Approved By (Planning Section Chief)		Date	Time
NICOLE LAGIOIA			MONICA RAMIREZ		09/25/2023	2000

Division/Group Assignment List (ICS 204 WF)
Controlled Unclassified Information//Basic

1. Incident Name:				3.		
BEDROCK LOOKOUT				Branch:		Division/Group
2. Operational Period: DAY				LOOKOUT STAGING		
Date/Time From: 09/26/2023 0700 TUE		Date/Time To: 09/26/2023 2000 TUE				
4. Operations Personnel						
FIELD OPS		TERRY WALTER DAN TRAPANESE (T)		BRANCH DIRECTOR		
AIR ATTACK SUPERVISOR				STAGING AREA MANAGER		PAUL RYAN
5. Resources Assigned this Period						
Strike Team / Task Force / Resource Designator		LWD	Leader	Number Persons	Drop Off PT./Time	Pick Up PT./Time
GRD1 E-484 TABLE MOUNTAIN FORESTRY		10/03	JUSTIN CODY	1	LOOKOUT ICP/0700	LOOKOUT ICP/2000
VROL E-471 DEAN INNOVATIONS		10/01	MICHAEL RHODEHAMEL	1	LOOKOUT ICP/0700	LOOKOUT ICP/2000
EXC1 E-674 ZEB'S TREE SERVICE\		10/02	DANNY GOODRICH	2	LOOKOUT ICP/0700	LOOKOUT ICP/2000
SKD2 E-232 ROBERT S MURRAY (BDRK)		10/01	ARON GREGORY	2	LOOKOUT ICP/0700	LOOKOUT ICP/2000
LOGT E-508 BRINK BROTHERS (BDRK)		09/30	MARK BRINK	2	LOOKOUT ICP/0700	LOOKOUT ICP/2000
LOGT E-528 MARK JONES TRUCKING 3		10/05	DAN BROWN	1	LOOKOUT ICP/0700	LOOKOUT ICP/2000
6. Control Operations/Work Assignments:						
Achieve efficiency with heavy equipment at Lookout Staging. Determine needs and right size for Lookout Staging area with equipment needed to achieve the best outcome for fire control objectives. Prepare Strube Flats for Willamette National Forest log decking.						
7. Special Instructions:						
Resources report to Lookout Staging 0800 each day. Staging resources need to monitor Command Channel.						
8. Division/Group Communication Summary						
Function	Channel	RX Frequency N/W	RX Tone/NAC	TX Frequency N/W	TX Tone/NAC	Mode
TACTICAL	SEE COM PLAN					
COMMAND	SEE COM PLAN					
9. Prepared By (Resource Unit Leader)			Approved By (Planning Section Chief)		Date	Time
NICOLE LAGIOIA			MONICA RAMIREZ		09/25/2023	2000

Division/Group Assignment List (ICS 204 WF)
Controlled Unclassified Information//Basic

1. Incident Name:			3.			
BEDROCK LOOKOUT			Branch:		Division/Group	
2. Operational Period: DAY					PETE'S LAKE	
Date/Time From: 09/26/2023 0700 TUE		Date/Time To: 09/26/2023 2000 TUE				
4. Operations Personnel						
FIELD OPS		REGGIE BRAY		BRANCH DIRECTOR		
AIR ATTACK SUPERVISOR				DIVISION/GROUP SUPERVISOR		JAMES HONANIE CHRIS BURFORD (T)
5. Resources Assigned this Period						
Strike Team / Task Force / Resource Designator		LWD	Leader	Number Persons	Drop Off PT./Time	Pick Up PT./Time
HEQB O-3105		09/26	TODD BOWERS	1	WANOGA SPIKE/0700	WANOGA SPIKE/2000
ENG6 E-3113 WOODPECKER		10/01	ALEX WOLFF	3	WANOGA SPIKE/0700	WANOGA SPIKE/2000
ENG6 E-3114 STEELHEAD ENTERPRISES		10/01	JOHN TALOR	3	WANOGA SPIKE/0700	WANOGA SPIKE/2000
DOZ2 L/L 230 (PETE)			DAN LERMAN	1	WANOGA SPIKE/0700	WANOGA SPIKE/2000
DOZ2 L/L 231 (PETE)			DAN HAUSWOLD	1	WANOGA SPIKE/0700	WANOGA SPIKE/2000
E-3076 AMBO 311		09/26	SAM NAKANISHI	2	WANOGA SPIKE/0700	WANOGA SPIKE/2000
O-734 MEDIC 227		09/26	JES TEWS	1	WANOGA SPIKE/0700	WANOGA SPIKE/2000
6. Control Operations/Work Assignments:						
<p>Task: 1.) Continue to patrol/monitor Pete's Lake Fire. 2.) Remove fire infrastructure from Cascade Lakes Highway work areas. Purpose: 1.) To maintain situational awareness about fire activity and manage operational resources commensurate with fire potential. 2.) To prepare drop points and work areas for turn-over to local unit. End State: A secure holding feature that provides scenic value and fire resilience to the entities along the Cascade Lakes Highway.</p>						
7. Special Instructions:						
All resources available for local IA.						
Needs:						
8. Division/Group Communication Summary						
Function	Channel	RX Frequency N/W	RX Tone/NAC	TX Frequency N/W	TX Tone/NAC	Mode
TACTICAL	SEE COMM PLAN					
COMMAND	SEE COMM PLAN					
9. Prepared By (Resource Unit Leader)			Approved By (Planning Section Chief)		Date	Time
NICOLE LAGIOIA			MONICA RAMIREZ		09/25/2023	2000

AIR OPERATIONS SUMMARY ICS-220

Incident Name / Number Lookout/Bedrock/Pete's Lake	Sunrise 0658	Pumpkin 1926	Sunset 1856
Time Prepared 1700 Shutdown 1900 Date Prepared 9/25/23 Operational Period - Date 09/26/23			
Prepared By Kyle Stump Operational Period - Time 0700-2000			
Helibase Information Sun River Location 43 52.483 121 27.318 Phone 425-324-1368 Helibase Information TFR: Lookout 3/2925 Surface up to 9000 MSL 0800-2100 TFR: Pete's Lake 3/2926 Surface up to 10000 MSL 0800-2100 Name: N38HX Phone: 435-691-1637 Make/Model: AS350 B3 Location: Sun River HLB Request Procedure for These Aircraft: Communications on Command			

General Remarks, Safety Notes, Hazards, Air Operations Special Equipment, etc.
 *Be aware of retardant avoidance areas, 300ft away from waterways and bodies of water.
 *Sanitize Buckets before changing water sources.
 *All GPS is to be collected in DD° MM.MMM'
 *Be cognizant of all overhead and environmental hazards while working with Aircraft.
 *Clear drop arealine before initiating drop sequence.
 *Avoid power lines near Trail Bridge Dip site.
 *Order All Aircraft through Sun River Helibase
 *Sun River Helibase costs to: lookout.helibase@gmail.com

Incident Frequencies	RX	Tone	TX	Tone	AM/FM
Lookout A/A (TFR)	118.0750				AM
Pete's Lake A/A (TFR)	134.8500	134.8500			AM
A/G primary	167.0625	167.0625			FM
A/G secondary	169.2000	169.2000			FM
DECK Sun River	168.3500	168.3500			FM
TOLC Sun River	164.8625	164.8625			FM
IA A/G White ODF	151.3100	156.7	151.3100	156.7	FM
IA A/G 50 USFS	168.2875		168.2875		FM
AIR GUARD	168.6250		168.6250	110.9	FM

HELICOPTERS Sun River Helibase

FAA #	TYPE	Make/Model	Helibase	Start	Avail	Remarks
N38HX	3	AS350B3E	Sun River	0700	0800	Short-haul - GACC Prepo
N27HX	3	Bell 407	Sun River	0700	0800	Recon, Bucket
N99WL	2	Bell 205++	Sun River	0700	0800	Rappel, Bucket

UAS

Call Sign	Type	Make/Model	Base	Start	Avail	Remarks
FIXED WING AA/HLCO						

INCIDENT RADIO COMMUNICATIONS PLAN (ICS 205)		Incident Name		Date/Time Prepared		Operational Period Date/Time				
		Lookout		9/25/2023 1900		09/26/2023 - All Shifts				
Zn Ch	Function	Channel Name/Trunked Radio System Talkgroup	Assignment	RX Freq N or W	RX Tone/NAC	TX Freq N or W	Tx Tone/NAC	Dev Pwr	Mode A, D or M	Remarks
1	COMMAND	CMD 1	ALL BRANCHES	169.5375	156.7	164.7125	156.7	N H	A	Located East of Fire Area
2	COMMAND	CMD 2	ALL BRANCHES	168.4750	156.7	165.4000	156.7	N H	A	Located NW of Fire Area
3	COMMAND	CMD 3	ALL BRANCHES	170.2875	156.7	163.6125	156.7	N H	A	Located on Mt. Bachelor/ Pete's Lake
4	COMMAND	CMD 4	ALL BRANCHES	171.0625	156.7	163.8250	156.7	N H	A	Covers ICP + Hwy 126
5	COMMAND	CMD 5	ALL BRANCHES	170.6875	156.7	166.5750	156.7	N H	A	Hoodoo Butte
6	TACTICAL	TAC 1	DIV A / C	168.0500	156.7	168.0500	156.7	N H	A	Division Alpha & Division Charley
7	TACTICAL	TAC 2	DIV T	168.2000	156.7	168.2000	156.7	N H	A	Division Tango
8	TACTICAL	TAC 3	DIV H	168.6000	156.7	168.6000	156.7	N H	A	Division Hotel / White Pine
9	TACTICAL	TAC 4	DIV L/Pete's Lake	168.2500	156.7	168.2500	156.7	N H	A	Division Lima / Pete's Lake
10	TACTICAL	TAC 5	DIV P	166.7250	156.7	166.7250	156.7	N H	A	Division Papa
11	TACTICAL	TAC 6	Equip Grp	166.7750	156.7	166.7750	156.7	N H	A	Equipment Grp
12	Forest Rptr.	Frissell	ALL DIVS	172.2500	103.5	164.9125	162.2	N H	A	To Eugene Dispatch
13	Air-to-Ground	A/G PRI	ALL DIVS	167.0625	NONE	167.0625	NONE	N H	A	Primary AIR TO GROUND
14	Air-to-Ground	A/G SEC	ALL DIVS	169.2000	NONE	169.2000	NONE	N H	A	SECONDARY AIR TO GROUND
15	Air-to-Ground	VMED 29	MEDEVAC	155.3475	NONE	155.3475	156.7	N H	A	Life Flight
16	EMERGENCY	AIRGUARD	EMERGENCY	168.6250	NONE	168.6250	110.9	N H	A	EMERGENCY USE ONLY
Prepared By (Communications Unit Leader)				Incident Location:		Forest / Unit / Jurisdiction:				
Keith Brown - COML				Lookout Communications (661) 349-1513		State: OR		Latitude: " N Longitude: W		
with p Exzulu				County:		State: OR		Latitude: " N Longitude: W		
64780082RB40										

All Lookout fire resources should use Clone 93 Lookout as of 9/3/2023. All Divisions, use Command repeater that's best in your location.

INCIDENT RADIO COMMUNICATIONS PLAN (ICS 205)		Incident Name Bedrock		Date/Time Prepared 9/25/2023 1900	Operational Period Date/Time 09/26/2023 - All Shifts
---	--	---------------------------------	--	---	--

Zh Ch	Function	Channel Name/Trunked Radio System/ Talkgroup	Assignment	RX Freq N or W	RX Tone/NAC	TX Freq N or W	Tx Tone/NAC	Dev	Pwr	Mode A, D or M	Remarks
1	TACTICAL	TAC 1	North Repair	168.2500	136.5	168.2500	136.5	N	H	A	North Repair
2	TACTICAL	TAC 2	South Repair	166.7750	136.5	166.7750	136.5	N	H	A	South Repair
3	TACTICAL	TAC 3		166.7250	136.5	166.7250	136.5	N	H	A	UNASSIGNED
4	TACTICAL	TAC 4		168.6000	136.5	168.6000	136.5	N	H	A	UNASSIGNED
5	TACTICAL	TAC 5		168.2000	136.5	168.2000	136.5	N	H	A	UNASSIGNED
6	COMMAND	CMD 6	ALL BRANCHES	170.2500	136.5	162.8125	136.5	N	H	A	ALL - COMMAND (WEST) BEAR MTN
7	COMMAND	CMD 7	NOT IN USE	170.0000	136.5	166.6750	136.5	N	H	A	Not In Use
8	COMMAND	CMD 8	ALL BRANCHES	170.4125	136.5	165.9625	136.5	N	H	A	ALL - COMMAND (EAST) INDIAN FALL CRK
9	COMMAND	CMD 9	ALL BRANCHES	173.0375	136.5	167.3250	136.5	N	H	A	ALL - COMMAND (NE) PERNOT MTN
10	COMMAND	CMD 10	ALL BRANCHES	171.0375	136.5	162.1875	136.5	N	H	A	ALL - COMMAND (SOUTH) SINKER MTN.
11	COMMAND	CMD 11	NOT IN USE	170.3125	136.5	164.6000	136.5	N	H	A	Not In Use
12	TACTICAL	TAC 12	NOT IN USE	166.6000	136.5	166.6000	136.5	N	H	A	Not In Use
13	Air-to-Ground	A/G PRI	ALL DIVS	172.4625	NONE	172.4625	NONE	N	H	A	Do Not Use/Use Lookout A/G Pri
14	Air-to-Ground	A/G SEC	ALL DIVS	172.6750	NONE	172.6750	NONE	N	H	A	Do Not Use/Use Lookout A/G Sec
15	Air-to-Ground	VMED 29	MEDEVAC	155.3475	NONE	155.3475	156.7	N	H	A	Life Flight
16	EMERGENCY	AIRGUARD	EMERGENCY	168.6250	NONE	168.6250	110.9	N	H	A	EMERGENCY USE ONLY

Prepared By: (Communications Unit Leader)
 Keith Brown - COM1
 Incident Location: Forest / Unit / Jurisdiction:
 County: State: OR
 Latitude: " N Longitude: W

All Divisions, use Command repeater that's best in your location.

INCIDENT RADIO COMMUNICATIONS PLAN (ICS 205)		Incident Name		Date/Time Prepared		Operational Period Date/Time					
		FOREST IA		9/25/2023 1900		09/26/2023 - All Shifts					
Zh Ch	Function	Channel Name/Trunked Radio System Talkgroup	Assignment	RX Freq N or W	RX Tone/NAC	TX Freq N or W	Tx Tone/NAC	Dev	Pwr	Mode A, D or M	Remarks
1	TACTICAL	TAC 1	TAC 1	166.6000	136.5	166.6000	136.5	N	H	A	IA TAC
2	TACTICAL	TAC 2	RED NET	151.3400	156.7	151.3400	156.7	N	H	A	ODF RED NET
3	Air-to-Ground	A/G	White NET	151.3100	156.7	151.3100	156.7	N	H	A	ODF A/G
4	TACTICAL	PROJ MDL	PROJ MDL	168.7750	103.5	168.7750	103.5	N	H	A	USFS MIDDLE FORK PROJECT
5	COMMAND	TIMBER CK	TIMBER CK	170.4625	103.5	164.8250	131.8	N	H	A	USFS TIMBER CREEK
6	COMMAND	CMD 6	ALL BRANCES	170.2500	136.5	162.8125	136.5	N	H	A	BEDROCK COMMAND (WEST) BEAR MTN
7	COMMAND	CMD 7	Not In Use	170.0000	136.5	166.6750	136.5	N	H	A	Not In Use
8	COMMAND	LOWELL	LOWELL	170.4625	103.5	164.8250	110.9	N	H	A	USFS LOWELL
9	COMMAND	CMD 9	ALL BRANCES	173.0375	136.5	167.3250	136.5	N	H	A	BEDROCK COMMAND (NO) PERNOT MTN
10	COMMAND	CMD 10	ALL BRANCES	171.0375	136.5	162.1875	136.5	N	H	A	BEDROCK COMMAND (SOUTH) SINKER MTN.
11	Air-to-Ground	A/G 50	ALL DIVS	168.2875	NONE	168.2875	NONE	N	H	A	A/G PRIMARY - LOCAL
12	Air-to-Ground	A/G 59	ALL DIVS	169.1125	NONE	169.1125	NONE	N	H	A	A/G SECONDARY - LOCAL
13	Air-to-Ground	A/G PRI	ALL DIVS	172.4625	NONE	172.4625	NONE	N	H	A	AIR TO GROUND PRIMARY - BEDROCK
14	Air-to-Ground	A/G SEC	ALL DIVS	172.6750	NONE	172.6750	NONE	N	H	A	AIR TO GROUND SECONDARY-BEDROCK
15	Air-to-Ground	VMED 29	MEDEVAC	155.3475	NONE	155.3475	156.7	N	H	A	MEDICAL EVACUATION ONLY
16	EMERGENCY	AIRGUARD	EMERGENCY	168.6250	NONE	168.6250	110.9	N	H	A	EMERGENCY USE ONLY
Prepared By (Communications Unit Leader)				Incident Location:				Forest / Unit / Jurisdiction:			
Keith Brown - COML				Lookout Communications (661) 349-1513				Latitude: " N Longitude: W			
6497804528640				County: OR				State: OR			

All Lookout fire resources should use Clone 93 as of 9/3/2023. All Divisions, use Command repeater that's best in your location.

HEALTH AND SAFETY MESSAGE
Pacific Northwest Incident Management Team 2



INCIDENT: Lookout, Bedrock, Pete's Lake

DATE: 9/26/23

Indigenous Training and Our Current Gaps

“What happens to experts when the rate of change exceeds the rate of learning? They cease being experts.”

The term “indigenously trained” or “indigenous training” was coined by Dr. Preston Cline from the Mission Critical Teams Institute. It is a concept that seeks to describe professions where new members are selected by, and learn from, current practitioners. In other words, you don't go to college or a trade school to learn how to be a hotshot, rappeller, or smokejumper. You are selected and trained from people who do the job daily. These same people learned from their predecessors.

There are operational and cultural norms passed down from generations of leadership beginning with the unit's original inception. Organizational and operational adaptation occurs as the unit collectively tackles new complexity in the fire environment.

A potential shortcoming of this model is that none of us (or mostly none) are professional educators. It is important to realize that this likely means there are large gaps in how we currently train and teach and how we could more effectively train and teach.

An especially difficult thing to convey is tacit knowledge. *Tacit knowledge* can be defined as skills, ideas and experiences that are possessed by people but are not codified and may not necessarily be easily expressed. In other words, how do we quickly get to a place where we can communicate and understand, “what right looks and feels like” in a constantly changing environment. How long on average does it take to teach someone to be a competent tree faller or dependable lighter? What ways can we accelerate this competency?

The second potential pitfall in indigenous training, is that we know the fire environment is getting more complex every year. More structures in the wildland, larger fires, more days with severe resource shortages, etc. We need to prepare to fight tomorrow's fire, not the fires of a decade or more ago. How do we develop new ways to teach and organize to solve this dynamic problem.

MCTI podcast <https://teamcast.missioncti.com/episode/1-the-mission-critical-team-institute-w-dr-preston-cline>

LOGISTICS MESSAGE

COMMUNICATIONS	Ph. 661-349-1513 Staffed 24 Hrs. (Lookout ICP)
----------------	--

ALL LINE ORDERS ARE TO GO THROUGH COMMUNICATIONS. (See line order form)

Lookout ICP/Base (Walterville, OR)

Location	38656 Kickbusch Lane Walterville, OR 97478
Supply	Hours: 0600 – 2200
Laundry	Hours 0600 -1000 & 1500-2200
Fuel Truck	Hours: 0600 - 2100
Communications	Hours: 24 hour service
Kitchen	Hours: 0600 - 0900 Breakfast, Lunch pick up at reefer Hours: 1800 - 2100 Dinner
Weed Wash	Hours: 0700 - 1400 & 1600 - 2000
Showers	El Dorado: Hours: 0500 - 1200 & 1400 - 2200
Facilities Message:	Please email ALL Facility orders to 2023.Lookout.Facilities@Gmail.com

Ground Support	Hours: 0600 - 2130
Transportation	Eugene Quilter: 435-691-4130

Lookout Staging (Rock Quarry)

Location	54547 McKenzie HWY
Ground Support	Hours: 0600 - 2130
Fuel Truck	Hours: 0600 - 2100
Weed Wash	Hours: 0700 – 1400 & 1600 - 2000
Transportation	Todd Griffin: 206-660-9644

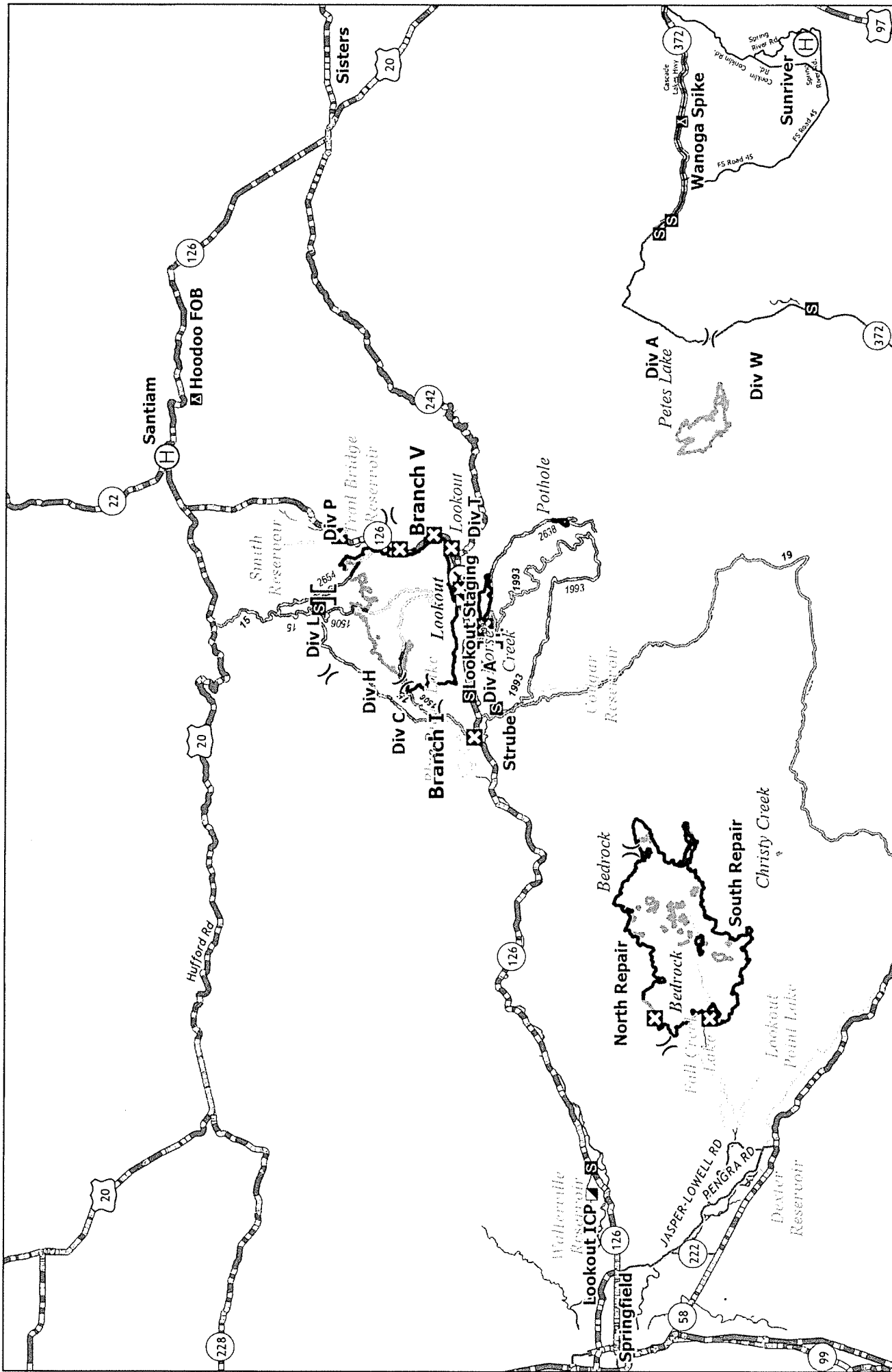
Wanoga Spike


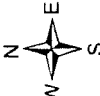
Location	HWY 46 – Cascade Lakes
Supplies & Como trailer	0700 – 1900 as needed

ORDERING: Lookout: 2023.lookout.ordering@firenet.gov

Bedrock: 2023.bedrock.ordering@firenet.gov

Pete’s Lake: 2023.peteslake.ordering@firenet.gov







Transportation
 Bedrock - ORWIF-230266
 Lookout - ORWIF-230327
 Petes Lake - ORWIF-230409
 09/26 /2023

Airstrip or Airport
 Branch Break
 Camp
 Helibase
 Incident Command Post
 Staging Area
 Division Break
 Closure
 Fire Area

Lookout ICP : 38601 Camp Creek Road, Walterville, OR 97489
 (14.5 Miles from Eugene, 19 min) - Weed Wash Station
Lookout Staging: 54547 McKenzie Hwy, Blue River, OR 97413 - Weed Wash Station
Hoodoo FOB: 27400 Big Lake Rd., Sisters, OR 97759 - Weed Wash Station
Wanoga Spike: 15523 Cascade Lakes Hwy, La Pine, OR 97739

0 4 8 Miles



Finance Message



Please email your CTRs & Shift Tickets to the fire listed on your resource order.

Lookout: 2023.lookout.finance@firenet.gov

Bedrock: 2023.bedrock.finance@firenet.gov

Petes Lake: 2023.peteslake.finance@firenet.gov

SUBJECT: *EQUIPMENT* for Contract Resources

SUBJECT: *TIME* for Fed, State, & Local Gov't Crews & Employees

Equipment 971-713-0359

Personnel 661-349-1530

Comp Claims 360-318-5211

Please indicate the name & number **of the fire where you are working** on all CTRs & Shift Tickets

LOOKOUT QH2A OR-WIF-230327	HORSE CREEK QLQO OR-WIF-230392	PETES LAKE QLV9 OR-WIF-230409	POTHOLE QLK2 OR-WIF-230393	BEDROCK QEW8 OR-WIF-230266
----------------------------------	--------------------------------------	-------------------------------------	----------------------------------	----------------------------------

PLEASE SUBMIT ALL DOCUMENTS IN PDF FORMAT

Documents you must submit to finance

Government & Cooperator Resources	Contract Resources
<ul style="list-style-type: none"> • Upon Check-In: Crew Manifest, Cooperative Agreement (if applies), AD Hire Letter, Resource Order • Daily: Crew Time Report (CTR), Shift Tickets • Demob: Signed OF288, Final Equipment Use Invoice (Cooperator) 	<ul style="list-style-type: none"> • Upon Check-In: Resource Order, Full Contract/Agreement, Certifications (<i>if required</i>), Pre-Inspection • Daily: Shift Tickets, receipts (fuel issues, claims, hotels, etc.) • Demob: Contractor Evaluations, Final Shift Tickets and receipt(s) for Addition/Deductions, Post-Inspection, Final Signed Invoices

Contract Vendors, if you have been here for 14 days or more and wish to have an interim payment processed, please see finance.

If you are listed below – please call, email or visit finance. 😊
Finance is open at 0600 so please feel free to stop in before briefing!

PERSONNEL		CONTRACTED RESOURCES			
BEDROCK		PETES LAKE		LOOKOUT	
O730	Anderson, Quinlan	E48	Conversion LLC	E333	American Fire Company
LOOKOUT		BEDROCK		E-536	Axsus Enterprises
O875	Adamo, Orion	E14	10-Minuteman EMS	E-335	Axsus Enterprises
O869	Baca, Matthew	E524	BFC Limited	C95	Axsus Enterprises
E427	Bliss Fire District	E532	BFC Limited LLC	E189	Big State Wildfire
E682	Brown, Brandon E652	E450	Charles Ireland	E152	Brink Brothers
O937	Chitwood, CiCi	E442	J & D Logging	E152	Central Oregon Fire (COF SS)
O735	Goheen, Thomas	E544	J3 Contracting / AXSUS	E472	Central Oregon Fire (COF SS)
O588	Hade, David	E370	LeeRoy Belloir and Sons LLC	E652	Franco Ref C-2
O554	Jenman, Nadia	E523	Mark Jones	E524	Franco Reforestation C-1
E633	Jones, Blake	E509	Mark Jones Trucking	E355	Heli-Fire Support Int'l.
O847	Jones, Elliott	E41	Outback Firefighting	E356	Mark Jones Trucking
O736	Kiehn, Eric	E29	Paragon Water Tenders	E351	Mark Jones Trucking
E615	Price, Brian IDPAF411	E423	REMS 43 HART	E14	Mark Jones Trucking
O964	Rooks Dustin	E497	Russell Mgmt	E414	Michael D Martines – Wildland Support
O763	Roy, Ian	E505	Saylor Construction	E689	Miller Timber
O674	Strickland, Gary	E431	Weyerhaeuser	E338	Miller Timber
O942	Strong, Paul	E666	Zeb's Tree Service LLC	C10003	Pacific Ridgeline

- * PLEASE SHOW YOUR LUNCH BREAK – IF NO BREAK SHOWN IT MUST BE JUSTIFIED IN COMMENTS
- * WHEN CLAIMING HAZARD PAY YOU MUST INCLUDE THE SUPPRESSION ACTION BEING PERFORMED. THIS INCLUDES OPERATIONS WHICH DIRECTLY SUPPORT CONTROL OF FIRE (E.G., ACTIVITIES TO EXTINGUISH THE FIRE, FIREFIGHTING, GROUND SCOUTING, SPOT FIRE PATROLLING, SEARCH AND RESCUE OPERATIONS, AND BACKFIRING). – PER PMS902 – YELLOW BOOK

LOOKOUT and BEDROCK DEMOB LIST (09/26 TO 9/28)

If your Demob method of travel is by air, contact DMOB at (971) 762-8572 at least 72-hours in advance of your last work day.

Day Before Your Demob:

Contact FINANCE 24 hours prior to give them a heads-up you are departing and turn in any outstanding CTR/Shift Ticket. Make sure they are SIGNED. Confirm there is no missing financial documentation.

Day of Demob STEP 1:

Contact DMOB at 971-762-8572 or in person to obtain your Demob Check-Out Form (ICS 221) and to determine your specific next steps since we are pre-clearing personnel that do not have any supplies or communications equipment checked out.

STEP 2:

Have your vehicle "weed washed" at Lookout ICP; Hoodoo FOB or at Rock Quarry Staging Area.

STEP 3 (if directed by DMOB):

SUPPLY – see in person to return issued gear and leftover supplies

COMMUNICATIONS – see in person to return any communications equipment

GROUND SUPPORT – see in person to return incident rental vehicles, contractors to get an inspection, etc.

STEP 4:

Proceed to, or call, FINANCE at (661) 349-1530 at Lookout ICP or (971) 713-0359 at Hoodoo FOB to complete time closeout process and receive signed OF-288 or OF-286

STEP 5:

Return to Demob for final closeout

- Turn in any Unit Logs and Evaluations to Documentation Unit (Documentation Box).
- DMOB will verify check-out completion.
- Be prepared to address your actual departure date/time; your anticipated arrival date/time; and where you will be staying overnight if travel includes overnight stops.

LOOKOUT

RO #	Item Code	Name	RO #	Item Code	Name
September 26			September 27 Lookout Continuation		
EQUIPMENT			OVERHEAD		
E-25	SKD1	RUSSELL	O-567	HEQB	WILSON, BARTHOLOMEW
E-225 (P)	MBM1	STATEWIDE	O-631	EQPM	ENOS, JONATHAN
E-238	FEL1T	TJ'S MECHANICAL CUTTING	O-588	SOF2	HADE, DAVID
E-268	ENG4	AAA THUNDERBOLT	O-669	COMT	TURNER, JULIE
E-274	SKD2	BRINK BROTHERS	O-674	SOFC	STRICKLAND, GARY
E-301	ENG3	HEK JONES	O-710	SEC1	CATOE, WILLIAM
E-346	FORW	MILLER	O-713	DIVS	CROMBIE, GARY
E-344	FORW	MILLER	O-723	HEQB	COLT, CHRIS
E-585	PUP1	RUNNING H. RANCH	O-725	ABRO	MCEWEN, CURT
E-631	ENG4	OR-MHF - 421	O-730	TFLD	BASFORD, NATHAN
E-647	FEL1	DUSTIN CHANTRY	O-733	MEDL	ONTKO, NECOLE
E-695	CHP1	EARTH INDUSTRIES	O-915	HECM	MYERS, MARY PAIGE
E-3076 (P)	AMB2	ADVENTURE MEDICS	O-744	HEQB	HUMBACH, ADAM
			O-596	HEQB	SENSECUA, KELLY
			O-902	HEBM	JENNINGS, ROBERT
			O-911	TFLD	NORSKOG, DANIEL
OVERHEAD			September 28		
O-519	SEC1	THOMPSON, DEREK	CREWS		
O-567	HEQB	WILSON, BARTHOLOMEW	C-97	CRW1	ROOSEVELT IHC
O-684	COMT	O'GRADY, SEAN	EQUIPMENT		
O-692	SECG	TANNER, ALISA	E-646	LOGT	WILDKAT TRUCKING
O-695	SECM	PAINE, RICHARD	E-351	LOGI	MILLER
O-716	EQPM	QUILTER, EUGENE	E-84	PUP1	CLAY (ETHAN LEE)
O-734	EMPF	BESTPRACTICEMEDICINE,	E-594	FORW	MILLER
O-808	EQTR	PRICE, DANA	E-311	FUT2	ED STAUB
O-826	SOF2	CHUNG, QUINCY	E-463	AMB2	FIRELINE MEDICS
September 27			E-538	CHP1	ANVIL BUILDERS
EQUIPMENT			E-555	CHP1	MILLER
E-590	STK2	ALVERNAZ CLAY	E-499	PUP1	ALVERNAZ CLAY
E-240	LOGI	NORTHWEST	OVERHEAD		
E-189	CHP1	BRINK BROTHERS	O-762	EMPF	FRONTLINEEMS
E-633	ENG4	NVEKD	O-738	FELB	WENNOGLE, CHRISTOPHER
E-632	ENG6	NCF - ENG 642	O-867	TFLD	VICKERS, COLIN
OVERHEAD			O-947	REAF	VANCE, EMMA
O-726	EMPF	WILDERNESSMEDICSINC	O-948	REAF	KNEISLY, ANGELICA
O-727	EMPF	MINUTEMANEMS			

LOOKOUT and BEDROCK DEMOB LIST (09/26 TO 9/28)

BEDROCK

September 26

EQUIPMENT

E-217	PUP1	RUNNING H RANCH
E-513	LOGL	BRINK BROTHERS (BDRK)
E-450	WTS2	CHARLES IRELAND
E-512	LOGL	BRINK BROTHERS (BDRK)
E-277	AMB2	ADVENTURE MEDICS 15 (BDRK)

OVERHEAD

O-679	HMGB	KOSIN, NICKOLAS
-------	------	-----------------

September 27

EQUIPMENT

E-499	BHOE	AXSUS ENTERPRISES
E-542	TUBG	BRINK BROTHERS (BDRK)

FIRE INFORMATION

Phone: 541-215-6735

Email: 2023.Lookout@ firenet.gov

Inciweb: inciweb.wildfire.gov/incident-information/orwif-lookout-fire
inciweb.wildfire.gov/incident-information/orwif-bedrock-fire
inciweb.wildfire.gov/incident-information/orwif-petes-lake-fire

Facebook: facebook.com/LookoutFire2023
facebook.com/BedrockFire2023
facebook.com/PetesLakeFireInfo

Social Media – PAUSE Before Posting

PERCEPTION – You are representing the jurisdictional agency and your home unit.

AUTHORITY – Be aware of federal and host agency social media policies.

UNDERSTANDING – Know the incident objectives. Never post negative, controversial, or unsafe messages to personal accounts. Ask a PIO/PAO or supervisor for clarification.

SAFETY – Do not compromise your safety while taking photos and always wear proper PPE. Never post photos of children, inmates, investigations, or cultural sites; be sensitive to burned structures and private information.

EXPECTATION – Share relevant content or photos with PIOs/PAOs to help tell the incident story

SHARE YOUR PHOTOS OR VIDEO

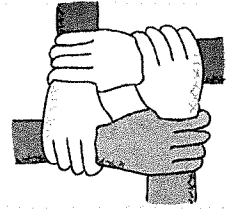
Please share your photos and videos with the Information Officers by email: 2023.Lookout@ firenet.gov. Include your name for photo credit and include basic info about where the photo was taken.

LOST AND FOUND

Located in the Information trailers at the Lookout ICP.



Human Resource Message



"I was once young and poor. Now, after decades of hard work, I'm no longer young."

One day, you will look back on your life. Here's hoping you will have many great memories to recall. It is likely that there will be a few bad memories mixed in there too. Memories that stem from offenses you were involved in or times when you were offended.

You can minimize having negative memories when you are in the rocking chair by practicing good mutual respect habits now.

"...there will be a time when we must choose between what is easy and what is right. -Albus Dumbledore" — J.K. Rowling,

That time, my friend, is now, today and every day after!

Your Human Resource Specialists

Teresa Smergut

Mike Baines

541-263-2283

724-678-6147

Resource Advisor Message - Lookout and Bedrock Fires

Joe Doerr, Lead READ – Lookout & Bedrock Fire, 541-912-4750 joseph.doerr@usda.gov

With rain coming take a look at the pumps and any fuel storage. Please ensure containment trays are empty, with fresh pads. Use visqueen, p-cord to make a tent over the pump and fuel where possible. Driving around please look for plugged culvert and ditches, and make sure water can flow even if you can't do a full repair.

Engineering and Roads

- Do not track heavy equipment on paved roads without the proper mitigations (ie. street grousers, rubber mats, etc.).
- If any road issues or concerns are encountered, please contact a REAF.

Dozer Lines

- Please work with Resource Advisors to clear proposed dozer lines.
- Please minimize the depth of the dozer line to the least extent required to meet objectives. Deep cuts are expensive, time consuming, and difficult to repair.

Heritage & Cultural

All cultural resources and human remains are protected by law. **Leave them in place- no collecting.** Call Resource Advisor if cultural resource like arrowheads, flakes/chips, or historic artifacts like cans & bottles are found and they will investigate.

Noxious Weeds

WEED WASH STATION:

- The Weed Wash stations are operational and located at Strubb Flat, Kickbrush & Hoodoo
- Please use the weed wash upon arrival at the incident, and during demob
- Avoid the following weed: Slender False Brome and Spotted Knapweed



REDUCE THE SPREAD: Brush off packs & boots (especially laces) before leaving fire camp.

Tree Felling Operations

Please keep equipment on road surface to the greatest extent possible

Log Processing:

- Utilize existing openings and landings for decking, ditch lines/roadside is acceptable
- Process trees down to a 6" top (small end diameter). Use remaining for firewood logs, rehab, or chip
- Preferred Log Lengths (maximize length whenever possible): 41 foot Max – 17 foot Min
- 2' increments below 41', keeping logs as long as possible (41', 39', 37', etc....) Process unburnt trees on the unburnt side of the fireline. Process burnt trees on the burnt side of the fireline.
- Keep processed slash and tops out of decks and off roads
- If possible, sort decks by species and log lengths

Snags and Hazard Trees:

Old growth is a key value. Limit snagging to operational needs & limit bucking to retain long bowls of large felled trees or snags.

Water Quality and Fisheries

AERIAL DIPPING:

- Aerial dipping should only occur at approved dip sites. Blue River Res. has a use restriction to facilitate dipping. Check with your REAF for approval of dipping sites.
- Be sure to wash buckets when new aerial resources arrive at the fire, when switching dips sites, or when returning to the fire from off forest.

WATER DRAFTING:

- Limited Drafting is available at the bridge across Lookout Creek on the 1506 road in section 28. Check with the REAF for additional drafting locations as needed.
- Utilize fish screens when in fish bearing waterbodies (REAFs have these available).
- Maintain sufficient flow as to not dewater downstream reaches
- Utilize splash pans and absorbent pads. REAFs will assist if given the location.

GROUND BASED RETARDANT APPLICATION:

- Provide a 75 foot buffer from riparian areas with live water when applying ground based retardant.

CHIPPING STANDARDS:

- Provide a 30- foot buffer of no chipping at water crossings or culverts.
- Do not place chips into road ditch.
- Do not chip onto a steep slope where chips will slide back into the ditch.
- Broadcast chipped material, ensuring that chips are no more than 4" deep.

Pete's Lake - -READ MESSAGE

Shaded Fuel Break Specifications

- Treat off of road road shoulder as directed, leaving a minimum of one tree every 20 feet spacing

Preferred leave tree species (from most desired leave to least desired):

- **Whitebark pine – do not cut**
 - **Western White Pine – do not cut**
 - Spruce
 - Mountain Hemlock
 - Douglas-fir
 - Ponderosa Pine
 - White Fir
 - Lodgepole Pine
- | | READs |
|--|-----------------------------|
| | Jason Gritzner 541-408-1846 |
| | Jason Wilcox 503-319-2408 |
- Preferred log length to a minimum 5 inch top:
 - 16' 6", 25', 29', 33'
 - 8 in. minimum trees to deck
 - **Max Cut 17 in. DBH**
 - Keep slash in landings a minimum 25 feet from dripline of live standing trees.
 - Log Landings size approximately 100ft. by 100 ft.; consult with READ on locations.
 - Tracked equipment no activity within 50 feet of live water.
 - Tracked equipment no activity within 30 feet of dry stream.
 - Avoid removing trees that have signs/blazes on them as much as possible

Fuels Treatment Specifications around Recreation Sites (specified by READs)

- Thin trees less than 4 in. DBH as directed
- Avoid removing trees that have signs/blazes on them as much as possible
- 10 foot spacing between leave trees for 20 feet off roads
- 20 foot spacing between leave trees interior to 20 feet off roads
- Cut lodgepole pine first
- Flush cut stumps within 50 feet from Highway 46
- Do not leave sharp stumps in recreation area
- Retain trees along streams (don't cut any trees within 20 feet of wet or dry stream banks, unless deemed hazard trees or otherwise directed).

Flagging Guide

Blue: ATP (Area to Protect)...refer to flags for written specifications

Orange: End Haul Site location (slash, logs, chips, etc.)

Chipping Specifications

- Spread chipped material to a max depth of 3 inches unless otherwise directed to pile.

HELICOPTER EXTRACTION OPERATIONS

The intent of helicopter insertion/extraction operations is to facilitate the movement of personnel to and from inaccessible areas. These operations are not meant to be a medical transport resource; life flight and ground transportation should always be ordered in addition to the extraction aircraft and crew.

ORDERING:

- On-scene EMT and/or Incident within Incident IC determines that an extraction helicopter is needed and places the order through the pre-established procedures:
 - Division Supervisor
 - Incident Communications
 - Dispatch Center
- When ordering extraction aircraft provide the following information:
 - Location (Lat/Long) of patient
 - Known Hazards
 - Wind Speed and Direction
 - Terrain
 - Incident Updates

SITE SELECTION:

- The helicopter crew will confirm the extraction location when they arrive on scene. However, a general rule is any clearing that is 10'x10' with visible sight lines to the sky is a suitable extraction site.
- If the terrain is steep, excavating a platform or shelf can make it easier for patient packaging.

QR Code-Short-haul Site Selection Video



CONSIDERATIONS:

- Short-haul and hoist are safe and efficient operations for extracting injured personnel of any severity including "Green" patients.
- Ensure area is clear of non-essential items, hazards, and personnel.
- Rotor wash may affect overhead hazards and blowing dust/debris can create brown out conditions or influence fire behavior.
- Aerial Supervision is valuable for coordinating aviation medevac/extraction missions and should be ordered if available and not currently present.
- The aircrew will make the final assessment of the mission. Always have a contingency plan in case a helicopter cannot complete the request.

DEFINITIONS:

Rescue Hoist: A cable winching device mounted to the helicopter that can lower/raise persons attached to a cable.

- Common cable lengths are 250-300 feet.

Short-haul: To insert or extract one or more persons suspended on a fixed line beneath a helicopter.

- Common short-haul line lengths are 100, 150, and 250 feet. The lines can also be connected for a longer line if the situation requires it.

Incident/Project Name		Operational Period						
LOOKOUT/BEDROCK		Date/Time:	09/26 - 09/27 0700-0700					
Ambulance Services								
Name	Complete Address	Phone & EMS Frequency		Advanced Life Support (ALS)		Yes	No	
AMBO 308 (Lookout Transport)	Blue River Reservoir	Command Channel		X				
Bend Fire Department	1212 SW Simpson Ave, Bend, OR 97702	911 / 541-693-6911		X				
Sister-Camp Sherman R.F.P.D	301 South Elm Street Sisters, OR			X				
Eugene/Springfield Fire (Lookout Transport)	1705 W. 2 nd Ave Eugene, OR	Lane County 911		X				
Air Ambulance Services								
Name	Phone	Type of Aircraft & Capability						
Life Flight – Eugene or Redmond	Order through Lookout Comms 800-232-0911	Critical Care Team of Paramedics and RN NVG, Freq: VMED 29						
Airlink - Bend	Order through Lookout Comms 800-353-0497	Critical Care Team of Paramedics and RN NVG, Freq: VMED 29						
Teton Short Haul	Ordered by Lookout Comms	ALS, Short Haul, not-dedicated to the incident – Daytime use only						
Hospitals								
Name Complete Address	GPS Datum – WGS 84 Coordinate Standard Degrees Decimal Minutes		Travel Time		Phone	Helipad		Level of Care Facility
	Lat:	Long:	Air	Gnd		Yes	No	
PeaceHealth Sacred Heart Medical Center 333 Riverbend Drive Springfield, OR 97477	Lat:	44° 04.876' N	10 min	20 min	541-222-6931	X		Level 2 Trauma
	Long:	123° 01.588' W						
	FAA	OG64						
St Charles Bend 2500 NW Neff Rd Bend, OR 97701	Lat:	44°04.1023'N	45 mins	2 hours 20 min	541-382-4321	X		Level 2 Trauma
	Long:	121°16.0537'W						
	FAA	54OR						
Legacy Emanuel Hospital 3001 N Gantenbein Ave Portland, OR 97227	Lat:	45°32.6679'N	45 mins	2 hours	(406) 329-5635	X		Level 1 Trauma Burn Center
	Long:	122°40.2933'W						
	FAA	7OR5						
OHSU Hospital 3181 SW Sam Jackson Park Rd, Portland, OR 97239	Lat:	45°29.9498'N	45 mins	2 hours	ER (503) 494-7550	X		Level 1 Trauma
	Long:	114°29.7 W						
	FAA	80ID						

MEDICAL PLAN (ICS 206 WF)
Controlled Unclassified Information//Basic

Division Branch Group	Area Location Capability	
ICP	EMS Personnel:	Ryan Herrera MEDL 253-297-0537 Magenta Widner MEDL(t) 360-410-5433 Mari Bottoms MEDL(t) 541-403-1703 Necole Ontko MEDL(t) 541-815-6365 AMBO 310 - Ian Morse (EMPF) 423-596-1335
	Equipment Available on Scene:	ALS Ambulance, Medical Yurt w/ OTC Meds
	Medical Emergency Channel:	Lookout Communications
	Approved Helispot:	N/A
BEDROCK NORTH REPAIR	EMS Personnel:	REMS 1 - Sage Stewart (EMTF) 479-806-0860 AMBO 15 - Lucy Cummins (EMPF) 567-274-8888
	Equipment Available on Scene:	ALS Ambulance, ALS UTV w/ Technical Rescue
	Medical Emergency Channel:	Bedrock Communications
	Approved Helispot:	H-2, H-5, Cascara Camp
BEDROCK SOUTH REPAIR	EMS Personnel:	AMBO 10 - Andre Martoni (EMPF) 612-707-8496 MEDIC 221- Derek Jordan (EMPF) 803-727-7096
	Equipment Available on Scene:	BLS, ALS Ambulance
	Medical Emergency Channel:	Bedrock Communications
	Approved Helispot:	H-5, H-10, H-32
BRANCH I DIV A/C	EMS Personnel:	AMBO 308 - Ali Hammoudeh (EMPF) 973-968-9455 MEDIC 222 - Ritvik Chakraborty (EMPF) 678-308-3264
	Equipment Available on Scene:	ALS, ALS Ambulance (Transport Only)
	Medical Emergency Channel:	Lookout Communications
	Approved Helispot:	H-1, H-2, H-20, H-30, H-40
BRANCH I DIV H	EMS Personnel:	AMBO 304 - Russell Long-Thompson (EMPF) 514-965-1183 MEDIC 229 - Nathan Davis (EMPF) 816-844-5859 MEDIC 228 - Kyle Kemerer (EMPF) 650-868-2803
	Equipment Available on Scene:	ALS, ALS Ambulance
	Medical Emergency Channel:	Lookout Communications
	Approved Helispot:	H-2, H-30, H-40
BRANCH I DIV L	EMS Personnel:	AMBO 301 - Alexis Wasden (EMPF) 385-895-7738 MEDIC 226 - Steve McDowell (EMPF) 208-949-7936
	Equipment Available on Scene:	ALS, ALS Ambulance
	Medical Emergency Channel:	Lookout Communications
	Approved Helispot:	H-40

MEDICAL PLAN (ICS 206 WF)
Controlled Unclassified Information//Basic

BRANCH V DIV P	EMS Personnel:	RAT 4 - Neil "Gus" McClelland (EMTF) 608-780-7243 AMBO 306 - Stephen Spigelman (EMPF) 929-248-0242 MEDIC 224 - Noah Metzler (EMPF) 614-843-2836 EMT 123 - Ian Roy (EMTF) 707-508-9620	
	Equipment Available on Scene:	ALS, ALS Ambulance	
	Medical Emergency Channel:	Lookout Communications	
	Approved Helispot:	H-1, H-41	
BRANCH V DIV T	EMS Personnel:	AMBO 309 - Kyle Schulz (EMPF) 720-810-1776 MEDIC 223 - Benjamin Sholl (EMPF) 757-773-4688 MEDIC 231 - Luke Eversole (EMPF) 480-326-5676 EMT 126 - Sage Lyford (EMTF) 716-220-3755 EMT 124 - Daniel Hilberg (EMTF) 951-541-3351	
	Equipment Available on Scene:	BLS, ALS, ALS Ambulance	
	Medical Emergency Channel:	Lookout Communications	
	Approved Helispot:	H-1	
PETE'S LAKE	EMS Personnel:	AMB 311- Sam Nakanishi (EMPF) 440-596-2043 MEDIC 227 - Jes Tews (EMPF) 775-745-4012	
	Equipment Available on Scene:	ALS, ALS Ambulance	
	Medical Emergency Channel:	Lookout Communications	
	Approved Helispot:	H-3	
EQUIPMENT GROUP	EMS Personnel:	MEDIC 225 - Josh Puskar (EMPF) 440-796-6903 EMT 122 - Ethan Jarrett (EMTF) 479-312-0972	
	Equipment Available on Scene:	ALS, BLS	
	Medical Emergency Channel:	Lookout Communications	
	Approved Helispot:	H-1	
Prepared By (Med Unit Leader)	Date/Time	Reviewed By (Safety Officer)	Date/Time
Ryan Herrera MEDL Magenta Widner MEDL(t)	09/25/2023 - 2000	<i>Marshall Brown</i> SOF1	09/25/2023 - 2000



EMERGENCY PLAN INCIDENT WITHIN AN INCIDENT

ON SCENE INCIDENT COMMANDER

In the event of an accident or medical incident of any size, your primary responsibility is to ENSURE that the victim(s) receive prompt and effective Triage, Treatment, Extrication and Transport.

- **ENSURE THE MEDICAL INCIDENT REPORT IN THE INCIDENT ACTION PLAN IS BEING USED AND FOLLOWED- *IF DETERMINED TO BE A GREEN THAT REQUIRES TRANSPORT BACK TO CAMP OR TO A MEDICAL FACILITY, DO NOT DECLARE EMERGENCY TRAFFIC AND ONLY COMPLETE LINE 1-4 ON MEDICAL INCIDENT REPORT*.**
- Conduct size-up of the incident nature of accident, number type of resources involved, latitude and longitude location (DD°MMM.MM format): notify incident communications center and supervisor, request assistance as needed.
- Order and coordinate medical and support response to the accident.
- Evaluate special needs (law enforcement, haz mat, etc.).
- Clear the command frequency if medical emergency, coordinate with incident communications and air attack for air medical transportation needs.
- Preserve and photograph the scene for accident investigation.
- Remain aware of surroundings and the status of the main incident (delegate personnel to monitor the main fire) to ensure safety of medical treatment personnel.
- Until relieved, supervise and manage all personnel involved at the incident scene.

MEDICAL PLAN (ICS 206 WF)

Controlled Unclassified Information//Basic

Medical Incident Report

FOR A NON-EMERGENCY INCIDENT, WORK THROUGH CHAIN OF COMMAND TO REPORT AND TRANSPORT INJURED PERSONNEL AS NECESSARY.

FOR A MEDICAL EMERGENCY: IDENTIFY ON-SCENE INCIDENT COMMANDER BY NAME AND POSITION AND ANNOUNCE "MEDICAL EMERGENCY" TO INITIATE RESPONSE FROM IMT COMMUNICATIONS/DISPATCH.

Use the following items to communicate situation to communications/dispatch.

- 1. CONTACT COMMUNICATIONS / DISPATCH** (Verify correct frequency prior to starting report)
Ex: "Communications, Div. Alpha. Stand-by for Emergency Traffic."
- 2. INCIDENT STATUS:** Provide incident summary (including number of patients) and command structure.
Ex: "Communications, I have a Red priority patient, unconscious, struck by a falling tree. Requesting air ambulance to Forest Road 1 at (Lat./Long.) This will be the Trout Meadow Medical, IC is TFLD Jones. EMT Smith is providing medical care."

Severity of Emergency / Transport Priority	<input type="checkbox"/> RED / PRIORITY 1 Life or limb threatening injury or illness. Evacuation need is IMMEDIATE <i>Ex: Unconscious, difficulty breathing, bleeding severely, 2° – 3° burns more than 4 palm sizes, heat stroke, disoriented.</i> <input type="checkbox"/> YELLOW / PRIORITY 2 Serious Injury or illness. Evacuation may be DELAYED if necessary. <i>Ex: Significant trauma, unable to walk, 2° – 3° burns not more than 1-3 palm sizes.</i> <input type="checkbox"/> GREEN / PRIORITY 3 Minor Injury or illness. Non-Emergency transport <i>Ex: Sprains, strains, minor heat-related illness.</i>	
Nature of Injury or Illness & Mechanism of Injury		Brief Summary of Injury or Illness <i>(Ex: Unconscious, Struck by Falling Tree)</i>
Evacuation Request		Air Ambulance / Short Haul/Hoist Ground Ambulance / Other
Patient Location		Descriptive Location & Lat. / Long. (WGS84)
Incident Name		Geographic Name + Medical <i>(Ex: Trout Meadow Medical)</i>
On-Scene Incident Commander		Name of on-scene IC of Incident within an Incident <i>(Ex: TFLD Jones)</i>
Patient Care		Name of Care Provider <i>(Ex: EMT Smith)</i>

3. INITIAL PATIENT ASSESSMENT: Complete this section for each patient as applicable (start with the most severe patient)

Patient Assessment: See IRPG PAGE 106

Treatment:

4. EVACUATION PLAN:

Evacuation Location (if different): (Descriptive Location (drop point, intersection, etc.) or Lat. / Long.) Patient's ETA to Evacuation Location:

Helispot / Extraction Site Size and Hazards:

5. ADDITIONAL RESOURCES / EQUIPMENT NEEDS:

Example: Paramedic/EMT, crews, immobilization devices, AED, oxygen, trauma bag, IV/fluid(s), splints, rope rescue, wheeled litter, HAZMAT, extrication

6. COMMUNICATIONS: Identify State Air/Ground EMS Frequencies and Hospital Contacts as applicable

Function	Channel Name/Number	Receive (RX)	Tone/NAC *	Transmit (TX)	Tone/NAC *
COMMAND					
AIR-TO-GRND					
TACTICAL					

7. CONTINGENCY: Considerations: If primary options fail, what actions can be implemented in conjunction with primary evacuation method? Be thinking ahead.

8. ADDITIONAL INFORMATION: Updates/Changes, etc.

REMEMBER: Confirm ETAs of resources ordered. Act according to your level of training. Be Alert. Keep Calm. Think Clearly. Act Decisively.