



INCIDENT ACTION PLAN

Bedrock Fire	Lookout Fire	Horse Creek Fire	Pothole Fire	Petes Lake Fire
OR-WIF-230266	OR-WIF-230327	OR-WIF-230392	OR-WIF-230393	OR-WIF-230409
P6QEW8 (0618)	P6QH2A (0618)	P6QLQ0 (0618)	P6QLK2(0618)	P6QLV9 (0618)
DNR 221-IBQ	DNR 221-ICC			

September 29, 2023

Day Shift 0700-2000



Briefing Link, Maps,
IAP, Training forms,
CTR & IRPG

Notes


Incident Commander Alan Lawson
Deputy Incident Commander Nathan Rabe

Finance email
2023.lookout.finance@firenet.gov
Communications 24 Hour Emergency Number
661-349-1513

Intentionally blank

ICS Form 202 INCIDENT OBJECTIVES	1. INCIDENT NAME Bedrock / Lookout / Pothole / Horse Creek / Pete's Lake	2. DATE 09/28/23	3. TIME 1900
4. OPERATIONAL PERIOD (DATE/TIME) 09/29/2023 0700 – 2000			
5. GENERAL CONTROL OBJECTIVES FOR THE INCIDENT (INCLUDE ALTERNATIVES) Leaders Intent <ol style="list-style-type: none"> Human Life is the most important value to be protected. There is no higher value than that of our responders and the public. Utilize deliberate risk assessment and Incident Strategic Alignment Process to ensure hazards are identified and response is commensurate with values at risk. Limit impacts to communities at risk. Monitor fire behavior, smoke impacts and fire growth; respond as needed to protect life, property, infrastructure, improvements, recreation, cultural, natural resources, and other identified values at risk. Apply methods and implement suppression and repair strategies appropriate to the values at risk, and where they will have the highest probability of success. Suppression and repair activities will be coordinated with resource advisor and in accordance with approved suppression repair plan. Ensure the timely and accurate dissemination of information and maintain positive relationships with cooperating agencies and local landowners; along with identified elected state and local officials, business leaders and media contacts. Manage incident and assigned resources cost effectively, commensurate with the direction of the Agency Administrators and values to be protected. Manage human resources assigned to the incident in a manner that promotes a positive harassment free work environment, ensure all are treated with dignity and respect. There will be zero tolerance for drug and alcohol use or possession for those assigned to this incident. Management Objectives <ul style="list-style-type: none"> Consider, communicate and plan for the safety and wellbeing of assigned personnel, resources and the public, prior to engaging in any and all incident related activities. Emphasize safety in all that we do. Engage and limit the negative effects of fire suppression activities to natural resources. Suppression repair plan identifies specific actions needed to stabilize the adverse effects in these fire areas. Work with BAER Team to support access and completion of burned area assessment. Work with Willamette National Forest Timber READ to facilitate danger tree removal to reduce roadside hazards. Protect communities at risk, private properties, industrial timber, family forests, recreational areas, wildlife, cultural and natural resources, Eugene Water and Electric Board Dam, H.J. Andrews Experimental Forest, Hwy 126 and other identified values at risk. Continue to monitor fire behavior, activity and growth and react accordingly. Respond to new starts as requested by host agencies within TFRs and outside as requested. Utilize Turn-back Standards document to provide clear direction as to the desired conditions and the requirements for transfer of command for the Bedrock, Lookout, Horse Creek, Pothole, and Pete's Lake Fires back to host unit or to another Incident Management Team. 			
6. WEATHER FORECAST FOR OPERATIONAL PERIOD See Attached.		7. GENERAL SAFETY MESSAGE See Attached.	
8. ATTACHMENTS Organization List (ICS 203) Medical Plan (ICS 206) Safety Message Weather Forecast Communications Plan (ICS 205) Assignments (ICS 204) Fire Behavior Forecast ICS 214 Air Operations Summary (ICS 220)			
9. PREPARED BY Laurie Cox – PSC2 		10. APPROVED BY (Incident Commander) Alan Lawson 	

ORGANIZATION ASSIGNMENT LIST (ICS 203)

1. Incident Name:		2. Operational Period: DAY	
BEDROCK LOOKOUT		Date/Time From: 09/29/2023 0700 FRI	Date/Time To: 09/29/2023 2000 FRI
3. Incident Commander(s) and Command Staff:		6. Logistics Section:	
IC/UC	ALAN LAWSON	CHIEF	EVERETT ROBBINS III JAMES PAGE (T)
DEPUTY IC	NATHAN RABE	DEPUTY	
SAFETY OFFICER	DUANE VAN WOERT, GARY MCBRIDE KURT KRECH, BRIAN WESEMANN	SUPPLY UNIT	DAVID RICHARDS LOIS ANDERSON (T)
INFORMATION OFFICER	DAN OMDAL, MICHELE LABODA, JOSIE WILLIAMS JOHN FITZROY (T)	FACILITIES UNIT	JASON BAUER
LIAISON OFFICER	PATTI QUIRK; TIMOTHY MCKERN PAUL STRONG	GROUND SUPPORT UNIT	KYLE ROBBLEE
HUMAN RESOURCES	DEBBIE ROBINSON MIKE BAINES	COMMUNICATIONS UNIT	THOMAS HERMAN BRYAN MASSEY (T)
4. Agency/Organization Representative(s):		MEDICAL UNIT	RYAN HERRERA, MARIANN TURLEY TRINA MCCANDLESS
Agency/Organization	Name	SECURITY UNIT	
USFS AA	DARREN CROSS - MCKENZIE RIVER RANGER DISTRICT KEVIN LARKIN - DESCHUTES NATIONAL FOREST	FOOD UNIT	GEOFFREY CROSBY
USFS AA	STEPHANEY KERLEY - LAGRANDE RANGER DISTRICT	7. Operations Section:	
ODF AA	CHRIS CLINE	LEAD OPS	DEAN LANGE
ODF AGENCY REP	JOHN FLANNIGAN; CRAIG PETTINGER	PLANNING OPS	STEVE NORTH
BLM AA	DENNIS C. TEITZEL NORTHWEST OREGON BLM	FIELD OPS	BRUCE MEYER JOSH RIEPE (T)
LEAD READ	JOE DOERR		
LEAD DANGER TREE READ	JAMES RUDISILL	DIVISION/GROUP	NORTH REPAIR RICHARD WALLMOW MEGHAN FLUHARTY
5. Planning Section:		DIVISION/GROUP	SOUTH REPAIR AARON MERRITT SHANE ORSER
CHIEF	LAURIE COX	DIVISION/GROUP	A / C RONALD ADAMS ERIC KIEHN
RESOURCES UNIT	DONNA BERUBE DARLA SMITH	DIVISION/GROUP	H ZANE BROWN BRIAN BRADBURY
SITUATION UNIT	ROGER HART	DIVISION/GROUP	L JEREMEY CZAPINSKI
DOCUMENTATION UNIT	SABRINA MCCOMB	DIVISION/GROUP	P ANDREW SCHAFFRAN
DEMOBILIZATION UNIT	ELIZABETH O'NEAL	DIVISION/GROUP	T TIM LOVE KIP VAN DEWATER
FIRE BEHAVIOR ANALYST	FORREST OWNBEY	DIVISION/GROUP	LOOKOUT STAGING PAUL RYAN
TRAINING SPECIALIST	ADAM MICONE (T)	DIVISION/GROUP	EQUIPMENT GROUP SCOTT CLEAVE
GIS SPECIALIST	TED COUILLARD; MICHAEL CIBICKI GREG DEYOE (T)	7b. Air Operations Branch:	
TECHNOLOGY SUPPORT SPECIALIST	DAVE BISHOP; BILL MILLS DAVID FLORES JR (T)	AIR SUPPORT SUPERVISOR	JASON BROOKS BEN CRITTENDEN (T)
INCIDENT METEOROLOGIST	TERRENCE LEO BRIAN ADAMS (T)	8. Finance/Administration Section:	
		CHIEF	ANNETTE PAINOVICH, LINDA ONEAL
		DEPUTY	
		TIME UNIT	CARI PROVENCHER
		PROCUREMENT UNIT	SHELLEY KLUZ
		COST UNIT	JEANNE CHRISTENSEN
9. Prepared By:		Signature:	
Name:	DONNA BERUBE	Position/Title:	RESL
ICS 203	IAP Page	Date/Time:	09/28/2023 1800
			

Division/Group Assignment List (ICS 204 WF)
 Controlled Unclassified Information//Basic

1. Incident Name:				3.		
BEDROCK LOOKOUT				Branch:	Division/Group NORTH REPAIR	
2. Operational Period: DAY						
Date/Time From: 09/29/2023 0700 FRI		Date/Time To: 09/29/2023 2000 FRI				
4. Operations Personnel						
FIELD OPS	BRUCE MEYER JOSH RIEPE (T)					
DIVISION/GROUP SUPERVISOR	RICHARD WALLMOW MEG FLUHARTY (T)					
5. Resources Assigned this Period						
Strike Team / Task Force / Resource Designator	LWD	Leader	Number Persons	Drop Off PT./Time	Pick Up PT./Time	
TFLD O-738	10/04	CHRISTOPHER WENNOGLE	1	LOOKOUT ICP/0700	LOOKOUT ICP/2000	
TFLD (T) O-1018	10/11	LLOYD EVANS	1	LOOKOUT ICP/0700	LOOKOUT ICP/2000	
HEQB O-1007		DARIN COLLINS	1	LOOKOUT ICP/0700	LOOKOUT ICP/2000	
HEQB (T) O-812	10/01	JAYDEN CHYNOWETH	1	LOOKOUT ICP/0700	LOOKOUT ICP/2000	
HEQB (T) O-872	10/03	BROCK HARMON	1	LOOKOUT ICP/0700	LOOKOUT ICP/2000	
HEQB (T) O-1011	10/11	JESSE TSCHETTER	1	LOOKOUT ICP/0700	LOOKOUT ICP/2000	
FMOD O-795 A&C CUTTING	09/29	CORY KEFFER	2	LOOKOUT ICP/0700	LOOKOUT ICP/2000	
FMOD O-862 TOMS TIMBER	10/03	TRAVIS LOCKWOOD	2	LOOKOUT ICP/0700	LOOKOUT ICP/2000	
FMOD O-918 PACIFIC RIDGELINE FORESTRY	10/04	JACOB MILLER	2	LOOKOUT ICP/0700	LOOKOUT ICP/2000	
HC2 C-81 1ST CHOICE CONTRACTING (BDRK)	09/29	ENRIQUE MANZO	20	LOOKOUT ICP/0700	LOOKOUT ICP/2000	
ENG6 E-662 FIRST STRIKE ENVIRONMENTAL	10/01	SPENCER BERLIER	3	LOOKOUT ICP/0700	LOOKOUT ICP/2000	
EXC1 E-545 EERA - BFC LIMITED	09/29	NEIL FARTHING	2	LOOKOUT ICP/0700	LOOKOUT ICP/2000	
EXC2 E-468 4-Q TIMBER	10/01	ANTHONY BALDWIN	2	LOOKOUT ICP/0700	LOOKOUT ICP/2000	
EXC2 E-510 OUTBACK WILDFIRE	10/09	TODD HALEY	2	LOOKOUT ICP/0700	LOOKOUT ICP/2000	
SKD1 E-299 MARK JONES	10/12	ZAKK DEWBRE	2	LOOKOUT ICP/0700	LOOKOUT ICP/2000	
CHP1 E-550	10/05	DIANE DODGE	2	LOOKOUT ICP/0700	LOOKOUT ICP/2000	
CHP2 E-481 BIG BARK CHIPPER (BDRK)	10/06	ETHAN PALMER	3	LOOKOUT ICP/0700	LOOKOUT ICP/2000	
CHSL E-532 EERA - BFC LIMITED	10/08	FORTINO LARIOS	2	LOOKOUT ICP/0700	LOOKOUT ICP/2000	
8. Division/Group Communication Summary						
Function	Channel	RX Frequency N/W	RX Tone/NAC	TX Frequency N/W	TX Tone/NAC	Mode
TACTICAL	SEE COM PLAN					
COMMAND	SEE COM PLAN					
9. Prepared By (Resource Unit Leader)			Approved By (Planning Section Chief)		Date	Time
DARLA SMITH			LAURIE COX		09/28/2023	2000

Division/Group Assignment List (ICS 204 WF)
Controlled Unclassified Information//Basic

1. Incident Name:			3.			
BEDROCK LOOKOUT			Branch:		Division/Group	
2. Operational Period: DAY					NORTH REPAIR	
Date/Time From: 09/29/2023 0700 FRI		Date/Time To: 09/29/2023 2000 FRI				
4. Operations Personnel						
FIELD OPS		BRUCE MEYER JOSH RIEPE (T)				
DIVISION/GROUP SUPERVISOR		RICHARD WALLMOW MEG FLUHARTY (T)				
5. Resources Assigned this Period						
Strike Team / Task Force / Resource Designator		LWD	Leader	Number Persons	Drop Off PT./Time	Pick Up PT./Time
FRNT E-656 EERA - ROSE LOGGING		09/30	ROB MCCOLLOUGH	2	LOOKOUT ICP/0700	LOOKOUT ICP/2000
FRNT E-702 AXSUS ENTERPRISES		10/10	KELLEY THORNE	2	LOOKOUT ICP/0700	LOOKOUT ICP/2000
DUMP E-497 RUSSELLS MANAGEMENT (BDRK)		09/26	JEREMY GROESZA	1	LOOKOUT ICP/0700	LOOKOUT ICP/2000
DUMP E-652 EERA - MARK JONES TRUCKING		10/01	JERRY WOLFORD	2	LOOKOUT ICP/0700	LOOKOUT ICP/2000
DUMP E-653 EERA - MARK JONES TRUCKING		10/01	BUDDY CLEGG	1	LOOKOUT ICP/0700	LOOKOUT ICP/2000
DUMP E-696 BRINKS LAND IMPROVEMENT		10/06	PHIL TELFORD	1	LOOKOUT ICP/0700	LOOKOUT ICP/2000
DUMP E-697 BRINKS LAND IMPROVEMENT		10/07	FRANCIS KUPER	1	LOOKOUT ICP/0700	LOOKOUT ICP/2000
LOGP E-333 AXSUS		10/01	JESUS GUSMAN	2	LOOKOUT ICP/0700	LOOKOUT ICP/2000
LOGP E-334 AXSUS		10/01	JOSE SERANO	2	LOOKOUT ICP/0700	LOOKOUT ICP/2000
SOFR O-830		10/03	LUCAS DIXON	1	LOOKOUT ICP/0700	LOOKOUT ICP/2000
AMBO 15 E-277		10/13	CHRIS OLGUIN	2	LOOKOUT ICP/0700	LOOKOUT ICP/2000
REMS 1 O-55		10/05	SAGE STEWART	4	LOOKOUT ICP/0700	LOOKOUT ICP/2000
REAF O-284		09/21	MIKE LARMAN	1	LOOKOUT ICP/0700	LOOKOUT ICP/2000
REAF O-805		10/02	ELLIOTT WHARTON	1	LOOKOUT ICP/0700	LOOKOUT ICP/2000
REAF O-818 (DT)		10/04	BRANDYN CHILD	1	LOOKOUT ICP/0700	LOOKOUT ICP/2000
REAF O-965 (DT)		10/06	ROB MICKEY	1	LOOKOUT ICP/0700	LOOKOUT ICP/2000
REAF O-997 (DT)		10/10	MARC DASHER	1	LOOKOUT ICP/0700	LOOKOUT ICP/2000
REAF O-1025		10/11	SHANNON MCCOY	1	LOOKOUT ICP/0700	LOOKOUT ICP/2000
6. Control Operations/Work Assignments:						
8. Division/Group Communication Summary						
Function	Channel	RX Frequency N/W	RX Tone/NAC	TX Frequency N/W	TX Tone/NAC	Mode
TACTICAL	SEE COM PLAN					
COMMAND	SEE COM PLAN					
9. Prepared By (Resource Unit Leader)			Approved By (Planning Section Chief)		Date	Time
DARLA SMITH			LAURIE COX		09/28/2023	2000

Division/Group Assignment List (ICS 204 WF)
Controlled Unclassified Information//Basic

1. Incident Name:			3.			
BEDROCK LOOKOUT			Branch:	Division/Group NORTH REPAIR		
2. Operational Period: DAY						
Date/Time From: 09/29/2023 0700 FRI		Date/Time To: 09/29/2023 2000 FRI				
4. Operations Personnel						
FIELD OPS	BRUCE MEYER JOSH RIEPE (T)					
DIVISION/GROUP SUPERVISOR	RICHARD WALLMOW MEG FLUHARTY (T)					
6. Control Operations/Work Assignments:						
<p><u>Task:</u> Continue chipping operations throughout the Division. Utilize engines to patrol fire perimeter and address smoke and areas of heat, as necessary.</p> <p><u>Purpose:</u> Aid in the completion of repair efforts to areas disturbed by wildfire suppression.</p> <p><u>End State:</u> Restore lands affected in accordance to approved repair plans.</p>						
7. Special Instructions:						
DT: Denotes Danger Tree REAFs						
Needs: HEQB x 2; TFLD x 1; FRNT x 1; TFLD (t) x 1						
8. Division/Group Communication Summary						
Function	Channel	RX Frequency N/W	RX Tone/NAC	TX Frequency N/W	TX Tone/NAC	Mode
TACTICAL	SEE COM PLAN					
COMMAND	SEE COM PLAN					
9. Prepared By (Resource Unit Leader)			Approved By (Planning Section Chief)		Date	Time
DARLA SMITH			LAURIE COX		09/28/2023	2000

Division/Group Assignment List (ICS 204 WF)
 Controlled Unclassified Information//Basic

1. Incident Name:				3.		
BEDROCK LOOKOUT				Branch:	Division/Group SOUTH REPAIR	
2. Operational Period: DAY						
Date/Time From: 09/29/2023 0700 FRI		Date/Time To: 09/29/2023 2000 FRI				
4. Operations Personnel						
FIELD OPS	BRUCE MEYER JOSH RIEPE (T)					
DIVISION/GROUP SUPERVISOR	AARON MERRITT SHANE ORSER (T)					
5. Resources Assigned this Period						
Strike Team / Task Force / Resource Designator	LWD	Leader	Number Persons	Drop Off PT./Time	Pick Up PT./Time	
TFLD O-749	10/05	TED PIEHL	1	LOOKOUT ICP/0700	LOOKOUT ICP/2000	
TFLD (T) O-927	10/05	ARTURO LOZANO	1	LOOKOUT ICP/0700	LOOKOUT ICP/2000	
HEQB O-838	10/01	BRYAN VESCE	1	LOOKOUT ICP/0700	LOOKOUT ICP/2000	
HEQB (T) O-874	10/04	LOGAN PARSLEY	1	LOOKOUT ICP/0700	LOOKOUT ICP/2000	
HC2 C-100 MR CONTRACTING C-2	09/30	MANUEL JIMENEZ	20	LOOKOUT ICP/0700	LOOKOUT ICP/2000	
HC2 C-101 MR CONTRACTING C-1	09/30	TOMAS GUZMAN GARCIA	20	LOOKOUT ICP/0700	LOOKOUT ICP/2000	
HC2 C-104 WILLAMETTE VALLEY REFOR. C-7	10/02	JAVIER GUZMAN	20	LOOKOUT ICP/0700	LOOKOUT ICP/2000	
ENG4 E-1 J3 CONTRACTING (BDRK)	10/06	DAN TEGART	3	LOOKOUT ICP/0700	LOOKOUT ICP/2000	
ENG4 E-664 FIREMOG	10/02	JACE HOFFMAN	3	LOOKOUT ICP/0700	LOOKOUT ICP/2000	
ENG4 E-665 FIREMOG	10/01	MIKE PARENT	3	LOOKOUT ICP/0700	LOOKOUT ICP/2000	
ENG4 E-666 TORRES CONTRACTING	10/02	JUAN TORRES	3	LOOKOUT ICP/0700	LOOKOUT ICP/2000	
BHOE E-498 AXSUS ENTERPRISES	10/08	CORY ROBERTS	2	LOOKOUT ICP/0700	LOOKOUT ICP/2000	
BHOE E-499 AXSUS ENTERPRISES	10/04	BRIAN MARSHALL	2	LOOKOUT ICP/0700	LOOKOUT ICP/2000	
EXC1 E-546 EERA - AXSUS ENTERPRISES	10/07	CHARLES MAINWARING	2	LOOKOUT ICP/0700	LOOKOUT ICP/2000	
EXC2 E-227 DEAN INNOVATIONS (BDRK)	10/07	MARK TYDEMAN	2	LOOKOUT ICP/0700	LOOKOUT ICP/2000	
EXC2 E-654 EARNEST HEATHER	10/01	MITCH GRIFFITH	2	LOOKOUT ICP/0700	LOOKOUT ICP/2000	
EXC2 E-655 ZEB'S TREE SERVICE	10/01	CAMERON HOMES	2	LOOKOUT ICP/0700	LOOKOUT ICP/2000	
CHP1 E-531 TOP NOTCH TREE	10/02	DAMIEN STATEN	2	LOOKOUT ICP/0700	LOOKOUT ICP/2000	
CHP2 E-505 SAYLOR CONSTRUCTION (BDRK)	10/01	ETHAN PHILLIPS	3	LOOKOUT ICP/0700	LOOKOUT ICP/2000	
8. Division/Group Communication Summary						
Function	Channel	RX Frequency N/W	RX Tone/NAC	TX Frequency N/W	TX Tone/NAC	Mode
TACTICAL	SEE COM PLAN					
COMMAND	SEE COM PLAN					
9. Prepared By (Resource Unit Leader)			Approved By (Planning Section Chief)		Date	Time
DARLA SMITH			LAURIE COX		09/28/2023	2000

Division/Group Assignment List (ICS 204 WF)
Controlled Unclassified Information//Basic

1. Incident Name:				3.		
BEDROCK LOOKOUT				Branch:	Division/Group SOUTH REPAIR	
2. Operational Period: DAY						
Date/Time From: 09/29/2023 0700 FRI		Date/Time To: 09/29/2023 2000 FRI				
4. Operations Personnel						
FIELD OPS	BRUCE MEYER JOSH RIEPE (T)					
DIVISION/GROUP SUPERVISOR	AARON MERRITT SHANE ORSER (T)					
5. Resources Assigned this Period						
Strike Team / Task Force / Resource Designator	LWD	Leader	Number Persons	Drop Off PT./Time	Pick Up PT./Time	
SOFR O-830	10/03	LUCAS DIXON	1	LOOKOUT ICP/0700	LOOKOUT ICP/2000	
E-14 AMBO 10 (BDRK)	10/14	NICK KEMMERER	2	LOOKOUT ICP/0700	LOOKOUT ICP/2000	
O-667 MEDIC 221	10/06	DEREK JORDAN	1	LOOKOUT ICP/0700	LOOKOUT ICP/2000	
ARCH O-807	10/01	JENNIFER HERNANDEZ	1	LOOKOUT ICP/0700	LOOKOUT ICP/2000	
ARCH (T) O-981 (DT)	10/10	JUSTIN MEYER	1	LOOKOUT ICP/0700	LOOKOUT ICP/2000	
REAF O-284	09/21	MIKE LARMAN	1	LOOKOUT ICP/0700	LOOKOUT ICP/2000	
REAF O-818 (DT)	10/04	BRANDYN CHILD	1	LOOKOUT ICP/0700	LOOKOUT ICP/2000	
REAF O-965 (DT)	10/06	ROB MICKEY	1	LOOKOUT ICP/0700	LOOKOUT ICP/2000	
REAF O-997 (DT)	10/10	MARC DASHER	1	LOOKOUT ICP/0700	LOOKOUT ICP/2000	
REAF O-1025	10/11	SHANNON MCCOY	1	LOOKOUT ICP/0700	LOOKOUT ICP/2000	
REAF (T) O-805	10/02	ELLIOTT WHARTON	1	LOOKOUT ICP/0700	LOOKOUT ICP/2000	
6. Control Operations/Work Assignments:						
<p><u>Task:</u> Utilize crews to mop up, continue dozer/handline repair and backhaul of unneeded equipment. Utilize heavy equipment to continue with dozer line and drainage repair. Utilize engines to patrol fire perimeter and address smoke and areas of heat, as necessary.</p> <p><u>Purpose:</u> Restore lands impacted by wildfire and suppression tactics.</p> <p><u>End State:</u> Lands restored.</p>						
7. Special Instructions:						
DT: Denotes Danger Tree REAF						
8. Division/Group Communication Summary						
Function	Channel	RX Frequency N/W	RX Tone/NAC	TX Frequency N/W	TX Tone/NAC	Mode
TACTICAL	SEE COM PLAN					
COMMAND	SEE COM PLAN					
9. Prepared By (Resource Unit Leader)			Approved By (Planning Section Chief)		Date	Time
DARLA SMITH			LAURIE COX		09/28/2023	2000

Division/Group Assignment List (ICS 204 WF)

Controlled Unclassified Information//Basic

1. Incident Name:				3.		
BEDROCK LOOKOUT				Branch:	Division/Group	
2. Operational Period: DAY						
Date/Time From: 09/29/2023 0700 FRI		Date/Time To: 09/29/2023 2000 FRI		A / C		
4. Operations Personnel						
FIELD OPS		BRUCE MEYER JOSH RIEPE (T)		AIR ATTACK SUPERVISOR		JASON BROOKS BEN CRITTENDEN (T)
DIVISION/GROUP SUPERVISOR		RON ADAMS ERIC KIEHN				
5. Resources Assigned this Period						
Strike Team / Task Force / Resource Designator	LWD	Leader	Number Persons	Drop Off PT./Time	Pick Up PT./Time	
TFLD (T) O-869	10/04	MATTHEW BACA	1	LOOKOUT ICP/0700	LOOKOUT ICP/2000	
HC2 C-102 FRANCO REFORESTATION C-2	10/01	SANTOS FRANCO	20	LOOKOUT ICP/0700	LOOKOUT ICP/2000	
ENG3 E-524 WILDLAND SUPRT TM	09/29	MIKE JARAMILLO	3	LOOKOUT ICP/0700	LOOKOUT ICP/2000	
ENG4 E-680 NORTH PACIFIC FORESTRY	10/03	TYLER PAYNE	3	LOOKOUT ICP/0700	LOOKOUT ICP/2000	
CHP2 E-692 EARTH INDUSTRIES	10/06		3	LOOKOUT ICP/0700	LOOKOUT ICP/2000	
CHP2 E-693 MP FORESTRY	10/06	RAUL MORENO	3	LOOKOUT ICP/0700	LOOKOUT ICP/2000	
SOFR O-715.99	09/30	RYDER JONES	1	LOOKOUT ICP/0700	LOOKOUT ICP/2000	
SOFR O-967.72	10/10	JEFF KERR	1	LOOKOUT ICP/0700	LOOKOUT ICP/2000	
AMBO 308 E-433	10/01	ALI HAMMOUDEH	2	LOOKOUT ICP/0700	LOOKOUT ICP/2000	
MEDIC 222 O-676	09/30	RITVIK CHAKRABORTY	1	LOOKOUT ICP/0700	LOOKOUT ICP/2000	
REAF O-818	10/03	BRANDYN CHILD	1	LOOKOUT ICP/0700	LOOKOUT ICP/2000	
REAF O-905	10/04	BENJAMIN HATHAWAY	1	LOOKOUT ICP/0700	LOOKOUT ICP/2000	
6. Control Operations/Work Assignments:						
<p><u>Task:</u> Continue log processing and repair work, as appropriate. Backhaul unnecessary equipment and supplies.</p> <p><u>Purpose:</u> Continue completion of repair efforts.</p> <p><u>End State:</u> Minimize impacts to Hwy 126 corridor. Minimize impacts to HJ Andrews, other infrastructure, and natural resources. Complete suppression repair activities.</p>						
7. Special Instructions:						
<p>Needs:</p> 						
8. Division/Group Communication Summary						
Function	Channel	RX Frequency N/W	RX Tone/NAC	TX Frequency N/W	TX Tone/NAC	Mode
TACTICAL	SEE COM PLAN					
COMMAND	SEE COM PLAN					
9. Prepared By (Resource Unit Leader)			Approved By (Planning Section Chief)		Date	Time
DARLA SMITH			LAURIE COX		09/28/2023	2000

Division/Group Assignment List (ICS 204 WF)
Controlled Unclassified Information//Basic

1. Incident Name:			3.			
BEDROCK LOOKOUT			Branch:		Division/Group	
2. Operational Period: DAY					H	
Date/Time From: 09/29/2023 0700 FRI		Date/Time To: 09/29/2023 2000 FRI				
4. Operations Personnel						
FIELD OPS		BRUCE MEYER JOSH RIEPE (T)		AIR ATTACK SUPERVISOR		JASON BROOKS BEN CRITTENDEN (T)
DIVISION/GROUP SUPERVISOR		ZANE BROWN BRIAN BRADBURY (T)				
5. Resources Assigned this Period						
Strike Team / Task Force / Resource Designator		LWD	Leader	Number Persons	Drop Off PT./Time	Pick Up PT./Time
TFLD O-998		10/09	DAREK PEPPL	1	LOOKOUT ICP/0700	LOOKOUT ICP/2000
TFLD O-1017			BRIAN BORNONG	1	LOOKOUT ICP/0700	LOOKOUT ICP/2000
TFLD (T) O-873		10/04	KODI LESLIE	1	LOOKOUT ICP/0700	LOOKOUT ICP/2000
FELB (T) O-875		10/04	ORION ADAMO	1	LOOKOUT ICP/0700	LOOKOUT ICP/2000
FELB (T) O-876		10/03	BRADY GLAUTHIER	1	LOOKOUT ICP/0700	LOOKOUT ICP/2000
FELB (T) O-877		10/10	FORREST CLARK	1	LOOKOUT ICP/0700	LOOKOUT ICP/2000
STEN O-951		10/08	ERNEST PRAX	1	LOOKOUT ICP/0700	LOOKOUT ICP/2000
FMOD O-794 FALLER MODULE		10/06	CHRIS REED	2	LOOKOUT ICP/0700	LOOKOUT ICP/2000
FMOD O-837 TOMS TIMBER		10/09	STEVEN JOSH	2	LOOKOUT ICP/0700	LOOKOUT ICP/2000
FMOD O-861 WEST COAST CUTTING		10/09	BALDO MACIEL	2	LOOKOUT ICP/0700	LOOKOUT ICP/2000
HC2 C-106 TOM FERY FARM C-1		10/03	SERAFIN GARCÍA	20	LOOKOUT ICP/0700	LOOKOUT ICP/2000
HC2 C-107 J.C.OROZCO REFORESTATION C-5		10/06	JUAN OCHOA MORA	20	LOOKOUT ICP/0700	LOOKOUT ICP/2000
ENG6 E-660 FIRST STRIKE		10/01	ZANDER HAMILTON	3	LOOKOUT ICP/0700	LOOKOUT ICP/2000
ENG6 E-682 OR-DEF - 652		10/02	BRANDON R BROWN	6	LOOKOUT ICP/0700	LOOKOUT ICP/2000
SKD1 E-671 MKS LOGISTICS		10/01	SHANE HUFFMAN	2	LOOKOUT ICP/0700	LOOKOUT ICP/2000
SKD1 E-672 T2, INC		10/02	JAKE WILLE	2	LOOKOUT ICP/0700	LOOKOUT ICP/2000
FORW E-343 MILLER		10/11	LOREN KELLOGG	2	LOOKOUT ICP/0700	LOOKOUT ICP/2000
FEL1 E-648 BFC LIMITED		10/05	SHERI ROTH	2	LOOKOUT ICP/0700	LOOKOUT ICP/2000
CHP1 E-536 AXSUS ENTERPRISES		10/02	DAVID BERGQUIST	2	LOOKOUT ICP/0700	LOOKOUT ICP/2000
8. Division/Group Communication Summary						
Function	Channel	RX Frequency N/W	RX Tone/NAC	TX Frequency N/W	TX Tone/NAC	Mode
TACTICAL	SEE COM PLAN					
COMMAND	SEE COM PLAN					
9. Prepared By (Resource Unit Leader)			Approved By (Planning Section Chief)		Date	Time
DARLA SMITH			LAURIE COX		09/28/2023	2000

Division/Group Assignment List (ICS 204 WF)
Controlled Unclassified Information//Basic

1. Incident Name:			3.			
BEDROCK LOOKOUT			Branch:		Division/Group	
2. Operational Period: DAY					H	
Date/Time From: 09/29/2023 0700 FRI		Date/Time To: 09/29/2023 2000 FRI				
4. Operations Personnel						
FIELD OPS		BRUCE MEYER JOSH RIEPE (T)		AIR ATTACK SUPERVISOR		JASON BROOKS BEN CRITTENDEN (T)
DIVISION/GROUP SUPERVISOR		ZANE BROWN BRIAN BRADBURY (T)				
5. Resources Assigned this Period						
Strike Team / Task Force / Resource Designator		LWD	Leader	Number Persons	Drop Off PT./Time	Pick Up PT./Time
CHP1 E-689 PATRICK ENVIRONMENTAL		10/06	QUENTIN JOHNSON	3	LOOKOUT ICP/0700	LOOKOUT ICP/2000
CHP2 E-3508 BIG BARK		10/05	MATT DERUSHA	2	LOOKOUT ICP/0700	LOOKOUT ICP/2000
SOFR O-715.99		09/30	RYDER JONES	1	LOOKOUT ICP/0700	LOOKOUT ICP/2000
SOFR O-967.72		10/10	JEFF KERR	1	LOOKOUT ICP/0700	LOOKOUT ICP/2000
E-173 AMBO 304		10/04	RUSSELL LONG THOMPSON	1	LOOKOUT ICP/0700	LOOKOUT ICP/2000
O-762 MEDIC 228		10/13	FRANCISCO PACHECO	1	LOOKOUT ICP/0700	LOOKOUT ICP/2000
O-789 MEDIC 229		10/05	NATHAN DAVIS	1	LOOKOUT ICP/0700	LOOKOUT ICP/2000
REAF O-818		10/03	BRANDYN CHILD	1	LOOKOUT ICP/0700	LOOKOUT ICP/2000
REAF O-904		10/04	PATRICK CATALANO	1	LOOKOUT ICP/0700	LOOKOUT ICP/2000
REAF O-905		10/04	BENJAMIN HATHAWAY	1	LOOKOUT ICP/0700	LOOKOUT ICP/2000
6. Control Operations/Work Assignments:						
<u>Task:</u> Continue log processing and repair work, as appropriate. Backhaul unnecessary equipment and supplies. Monitor fire progression.						
<u>Purpose:</u> Continue completion of repair efforts. Keep fire south of the 1508 Road.						
<u>End State:</u> Minimize impacts to HJ Andrews, other infrastructure, and natural resources. Complete suppression repair activities.						
7. Special Instructions:						
Limit traffic on 1506 Rd. No traffic allowed past DP12 on the 1506 Rd. Limit traffic on the 1508 Rd. Coordinate activities with HJ Andrews Staff.						
Needs:						
8. Division/Group Communication Summary						
Function	Channel	RX Frequency N/W	RX Tone/NAC	TX Frequency N/W	TX Tone/NAC	Mode
TACTICAL	SEE COM PLAN					
COMMAND	SEE COM PLAN					
9. Prepared By (Resource Unit Leader)			Approved By (Planning Section Chief)		Date	Time
DARLA SMITH			LAURIE COX		09/28/2023	2000

Division/Group Assignment List (ICS 204 WF)
 Controlled Unclassified Information//Basic

1. Incident Name:				3.		
BEDROCK LOOKOUT				Branch:		Division/Group
2. Operational Period: DAY						
Date/Time From: 09/29/2023 0700 FRI		Date/Time To: 09/29/2023 2000 FRI		L		
4. Operations Personnel						
FIELD OPS		BRUCE MEYER JOSH RIEPE (T)		AIR ATTACK SUPERVISOR		JASON BROOKS BEN CRITTENDEN (T)
DIVISION/GROUP SUPERVISOR		JEREMY CZAPINSKI				
5. Resources Assigned this Period						
Strike Team / Task Force / Resource Designator		LWD	Leader	Number Persons	Drop Off PT./Time	Pick Up PT./Time
TFLD O-735		10/02	THOMAS GOHEEN	1	LOOKOUT ICP/0700	LOOKOUT ICP/2000
TFLD O-864		10/04	CLINTON WADE	1	LOOKOUT ICP/0700	LOOKOUT ICP/2000
TFLD (T) O-906		10/03	C. YZQUIERDO	1	LOOKOUT ICP/0700	LOOKOUT ICP/2000
HEQB O-926 SETH GREENE		10/07	IAP_ORIGINAL_20230926_2 30327	1	LOOKOUT ICP/0700	LOOKOUT ICP/2000
HEQB (T) O-870		10/03	TRAVIS POLLARD	1	LOOKOUT ICP/0700	LOOKOUT ICP/2000
HEQB (T) O-871		10/03	CHASE SMITH	1	LOOKOUT ICP/0700	LOOKOUT ICP/2000
HC2 C-99 BIG BARK CHIPPERS #2		10/01	CHESTER FULBRIGHT	20	LOOKOUT ICP/0700	LOOKOUT ICP/2000
ENG6 E-506 TRI-STATE FIRE (BDRK)		09/29	STANLEY SMITH	3	LOOKOUT ICP/0700	LOOKOUT ICP/2000
*ENG6 E-683 OR-DEF - 636		10/03	KREG JACKSON	6	LOOKOUT ICP/0700	LOOKOUT ICP/2000
EXC1 E-674 ZEB'S TREE SERVICE\		10/02	DANNY GOODRICH	2	LOOKOUT ICP/0700	LOOKOUT ICP/2000
EXC2 E-541 VALLEY TIMBER		10/02	NELSON TREAVOR	2	LOOKOUT ICP/0700	LOOKOUT ICP/2000
EXC2 E-690 J & D LOGGING & CONTRACTING			**SEE CHECK IN**		LOOKOUT ICP/0700	LOOKOUT ICP/2000
FEL1 E-100 BOULDER RIDGE		10/11	SHANE MURPHY	2	LOOKOUT ICP/0700	LOOKOUT ICP/2000
CHP1 E-555 MILLER TIMBER		10/05	TIM JONES	2	LOOKOUT ICP/0700	LOOKOUT ICP/2000
CHSL E-686 AXSUS ENTERPRISES		10/09	MANUAL NARANJO	1	LOOKOUT ICP/0700	LOOKOUT ICP/2000
SOFR O-715.99		09/30	RYDER JONES	1	LOOKOUT ICP/0700	LOOKOUT ICP/2000
SOFR O-967.72		10/10	JEFF KERR	1	LOOKOUT ICP/0700	LOOKOUT ICP/2000
E-3 AMBO 301		10/03	ALEXIS WASDEN	2	LOOKOUT ICP/0700	LOOKOUT ICP/2000
O-727 MEDIC 226		10/03	STEVE MCDOWELL	1	LOOKOUT ICP/0700	LOOKOUT ICP/2000
8. Division/Group Communication Summary						
Function	Channel	RX Frequency N/W	RX Tone/NAC	TX Frequency N/W	TX Tone/NAC	Mode
TACTICAL	SEE COM PLAN					
COMMAND	SEE COM PLAN					
9. Prepared By (Resource Unit Leader)			Approved By (Planning Section Chief)		Date	Time
DARLA SMITH			LAURIE COX		09/28/2023	2000

Division/Group Assignment List (ICS 204 WF)
Controlled Unclassified Information//Basic

1. Incident Name:			3.			
BEDROCK LOOKOUT			Branch:		Division/Group	
2. Operational Period: DAY			L			
Date/Time From: 09/29/2023 0700 FRI		Date/Time To: 09/29/2023 2000 FRI				
4. Operations Personnel						
FIELD OPS		BRUCE MEYER JOSH RIEPE (T)		AIR ATTACK SUPERVISOR		JASON BROOKS BEN CRITTENDEN (T)
DIVISION/GROUP SUPERVISOR		JEREMY CZAPINSKI				
5. Resources Assigned this Period						
Strike Team / Task Force / Resource Designator		LWD	Leader	Number Persons	Drop Off PT./Time	Pick Up PT./Time
REAF O-904		10/04	PATRICK CATALANO	1	LOOKOUT ICP/0700	LOOKOUT ICP/2000
6. Control Operations/Work Assignments:						
<p><u>Task:</u> Continue backhaul, chipping, and other repair work, as appropriate. <u>Purpose:</u> Continue completion of repair efforts. Keep fire south of 1508 Road. <u>End State:</u> Impacts to natural resources and infrastructure are minimized. Fire contained within primary lines. Completion of suppression repair activities.</p>						
7. Special Instructions:						
<p>Contact DIVS prior to entry to reduce congestion on 1508 Rd.</p> <p>*Denotes resources for Initial Attack (IA)</p> <p>Needs:</p>						
8. Division/Group Communication Summary						
Function	Channel	RX Frequency N/W	RX Tone/NAC	TX Frequency N/W	TX Tone/NAC	Mode
TACTICAL	SEE COM PLAN					
COMMAND	SEE COM PLAN					
9. Prepared By (Resource Unit Leader)			Approved By (Planning Section Chief)		Date	Time
DARLA SMITH			LAURIE COX		09/28/2023	2000

Division/Group Assignment List (ICS 204 WF)
Controlled Unclassified Information//Basic

1. Incident Name:			3.			
BEDROCK LOOKOUT			Branch:		Division/Group	
2. Operational Period: DAY					P	
Date/Time From: 09/29/2023 0700 FRI		Date/Time To: 09/29/2023 2000 FRI				
4. Operations Personnel						
FIELD OPS		BRUCE MEYER JOSH RIEPE (T)		AIR ATTACK SUPERVISOR		JASON BROOKS BEN CRITTENDEN (T)
DIVISION/GROUP SUPERVISOR		ANDREW SCHAFFRAN				
5. Resources Assigned this Period						
Strike Team / Task Force / Resource Designator		LWD	Leader	Number Persons	Drop Off PT./Time	Pick Up PT./Time
TFLD (T) O-868		10/06	BRYAN MARKS	1	LOOKOUT ICP/0700	LOOKOUT ICP/2000
HC2IA C-108 WIF MIDDLE FORK		10/07	ADAM DANIEL VROON	20	LOOKOUT ICP/0700	LOOKOUT ICP/2000
HC2 C-105 IRON MOUNTAIN FIREFIGHTING C-4		10/02	JOSE JUAN ZAVALA	20	LOOKOUT ICP/0700	LOOKOUT ICP/2000
FORW E-607 AXSUS		09/29	BILL KLEIN	2	LOOKOUT ICP/0700	LOOKOUT ICP/2000
EXC2 E-614 FENTER LOGGING		10/02	PAUL FENTER	2	LOOKOUT ICP/0700	LOOKOUT ICP/2000
CHP1 E-688 WILD FIRE SERVICES		10/06	TIM LOGOZZO SR	3	LOOKOUT ICP/0700	LOOKOUT ICP/2000
CHP2 E-620 DIAMOND ROAD MAINTENANCE		10/08	ROBERT PRATTE	3	LOOKOUT ICP/0700	LOOKOUT ICP/2000
CHP2 E-691 GRAYBACK FORESTRY		10/05	JARED COURNOYER	3	LOOKOUT ICP/0700	LOOKOUT ICP/2000
DUMP E-496 RUSSELLS MANAGEMENT (BDRK)		10/01	AUSTIN WILEY	1	LOOKOUT ICP/0700	LOOKOUT ICP/2000
LOGL E-62 MARK JONES		10/01	ROLAND STRUM	2	LOOKOUT ICP/0700	LOOKOUT ICP/2000
SOF2 O-826		10/02	QUINCY CHUNG	1	LOOKOUT ICP/0700	LOOKOUT ICP/2000
E-341 AMBO 306		10/03	STEPHEN SPIGELMAN	2	LOOKOUT ICP/0700	LOOKOUT ICP/2000
O-679 MEDIC 224		10/07	NOAH METZLER	1	LOOKOUT ICP/0700	LOOKOUT ICP/2000
O-763 EMT 123		10/04	IAN ROY	1	LOOKOUT ICP/0700	LOOKOUT ICP/2000
O-54 RAT 4		10/07	NEIL GUS MCCLELLAND	1	LOOKOUT ICP/0700	LOOKOUT ICP/2000
REAF O-889		10/03	ERIC GJONNES	1	LOOKOUT ICP/0700	LOOKOUT ICP/2000
6. Control Operations/Work Assignments:						
<p><u>Task:</u> Repair areas disturbed by fire suppression activities in order to meet ecological goals. <u>Purpose:</u> Repair and restore land affected by wildfire and suppression tactics and protecting any values at risk. <u>End State:</u> Fire is contained and impacts to values at risk and infrastructure along HWY 126 corridor are minimized.</p>						
7. Special Instructions:						
Needs: DIVS (t) x 1						
8. Division/Group Communication Summary						
Function	Channel	RX Frequency N/W	RX Tone/NAC	TX Frequency N/W	TX Tone/NAC	Mode
TACTICAL	SEE COM PLAN					
COMMAND	SEE COM PLAN					
9. Prepared By (Resource Unit Leader)			Approved By (Planning Section Chief)		Date	Time
DARLA SMITH			LAURIE COX		09/28/2023	2000

Division/Group Assignment List (ICS 204 WF)
Controlled Unclassified Information//Basic

1. Incident Name:				3.		
BEDROCK LOOKOUT				Branch:	Division/Group T	
2. Operational Period: DAY						
Date/Time From: 09/29/2023 0700 FRI		Date/Time To: 09/29/2023 2000 FRI				
4. Operations Personnel						
FIELD OPS	BRUCE MEYER JOSH RIEPE (T)			AIR ATTACK SUPERVISOR	JASON BROOKS BEN CRITTENDEN (T)	
DIVISION/GROUP SUPERVISOR	TIM LOVE KIP VAN DEWATER (T)					
5. Resources Assigned this Period						
Strike Team / Task Force / Resource Designator	LWD	Leader	Number Persons	Drop Off PT./Time	Pick Up PT./Time	
TFLD O-865	10/04	JONATHAN MCCONNELL	1	LOOKOUT ICP/0700	LOOKOUT ICP/2000	
HC2 C-103 FRANCO REFORESTATION C-1	10/01	ARMANDO CASTRO	20	LOOKOUT ICP/0700	LOOKOUT ICP/2000	
ENG3 E-451 J3 CONTRACTING (BDRK)	10/03	ANTHONY TENAJILLA	3	LOOKOUT ICP/0700	LOOKOUT ICP/2000	
ENG4 E-256 HI COUNTRY	10/04	SILAS PEREA	3	LOOKOUT ICP/0700	LOOKOUT ICP/2000	
ENG4 E-479 J3 CONTRACTING (BDRK)	10/04	STEWART NICHOLS	3	LOOKOUT ICP/0700	LOOKOUT ICP/2000	
ENG6 E-366 AMERICAN	10/05	MATT MORRELL	3	LOOKOUT ICP/0700	LOOKOUT ICP/2000	
FEL1 E-280 BRINK BROTHERS (BDRK)	10/02	MATT SAYLES	2	LOOKOUT ICP/0700	LOOKOUT ICP/2000	
EXC2 E-511 EVERY LIVESTOCK	10/02	PAT HANSEN	2	LOOKOUT ICP/0700	LOOKOUT ICP/2000	
EXC2 E-681 TJS MECHANICAL CUTTING LLC	10/06	BLAKE ROBB	1	LOOKOUT ICP/0700	LOOKOUT ICP/2000	
EXC3 E-701 MADERA NORTHWEST	10/10	CHAD LINVILLE	2	LOOKOUT ICP/0700	LOOKOUT ICP/2000	
EXC4 E-434 AXSUS ENTERPRISES	10/03	ANGELA RICE	1	LOOKOUT ICP/0700	LOOKOUT ICP/2000	
CHP1 E-538 ANVIL BUILDERS	10/01	JUSTIN BOYLE	2	LOOKOUT ICP/0700	LOOKOUT ICP/2000	
CHP1 E-542 MOUNTAIN VIEW TREE	09/29	KAI ELROD	2	LOOKOUT ICP/0700	LOOKOUT ICP/2000	
CHP1 E-673 WYEAST FORESTRY	10/02	ERIK NELSON	2	LOOKOUT ICP/0700	LOOKOUT ICP/2000	
CHSL E-684 AXSUS ENTERPRISES	10/07	RYAN JACKSON	1	LOOKOUT ICP/0700	LOOKOUT ICP/2000	
CHSL E-700 ANVIL BUILDERS	10/07	JUSTIN BOYLE	1	LOOKOUT ICP/0700	LOOKOUT ICP/2000	
SOF2 O-826	10/02	QUINCY CHUNG	1	LOOKOUT ICP/0700	LOOKOUT ICP/2000	
E-468 AMB2 309	10/03	KYLE SHULTZ	2	LOOKOUT ICP/0700	LOOKOUT ICP/2000	
O-678 MEDIC 223	09/30	BENJAMIN SHOLL	1	LOOKOUT ICP/0700	LOOKOUT ICP/2000	
8. Division/Group Communication Summary						
Function	Channel	RX Frequency N/W	RX Tone/NAC	TX Frequency N/W	TX Tone/NAC	Mode
COMMAND	SEE COM PLAN					
TACTICAL	SEE COM PLAN					
9. Prepared By (Resource Unit Leader)		Approved By (Planning Section Chief)		Date	Time	
DARLA SMITH		LAURIE COX		09/28/2023	2000	

Division/Group Assignment List (ICS 204 WF)
Controlled Unclassified Information//Basic

1. Incident Name:				3.		
BEDROCK LOOKOUT				Branch:	Division/Group T	
2. Operational Period: DAY						
Date/Time From: 09/29/2023 0700 FRI		Date/Time To: 09/29/2023 2000 FRI				
4. Operations Personnel						
FIELD OPS	BRUCE MEYER JOSH RIEPE (T)			AIR ATTACK SUPERVISOR	JASON BROOKS BEN CRITTENDEN (T)	
DIVISION/GROUP SUPERVISOR	TIM LOVE KIP VAN DEWATER (T)					
5. Resources Assigned this Period						
Strike Team / Task Force / Resource Designator	LWD	Leader	Number Persons	Drop Off PT./Time	Pick Up PT./Time	
O-825 MEDIC 231	10/07	LUKE EVERSOLE	1	LOOKOUT ICP/0700	LOOKOUT ICP/2000	
O-823 EMT124	10/01	DANIEL HILBERG	1	LOOKOUT ICP/0700	LOOKOUT ICP/2000	
O-962 EMT 126	10/09	SAGE LYFORD	1	LOOKOUT ICP/0700	LOOKOUT ICP/2000	
REAF O-818	10/03	BRANDYN CHILD	1	LOOKOUT ICP/0700	LOOKOUT ICP/2000	
REAF O-889	10/03	ERIC GJONNES	1	LOOKOUT ICP/0700	LOOKOUT ICP/2000	
REAF O-896	10/04	ASHLEY DI LEONARDI	1			
6. Control Operations/Work Assignments:						
<u>Task:</u> Utilize equipment and crews to repair dozer/handlines and roads. Utilize engines to patrol and maintain existing control lines.						
<u>Purpose:</u> Repair and restore land affected by wildfire suppression tactics and protecting any values at risk.						
<u>End State:</u> Lands affected by suppression actions are restored in accordance with approved repair plans.						
7. Special Instructions:						
S-826 Top Fill is located at the DP140 campground.						
Needs: CHSL x 1 TFLD x 1 HEQB x 1 TUBG x 1						
8. Division/Group Communication Summary						
Function	Channel	RX Frequency N/W	RX Tone/NAC	TX Frequency N/W	TX Tone/NAC	Mode
COMMAND	SEE COM PLAN					
TACTICAL	SEE COM PLAN					
9. Prepared By (Resource Unit Leader)			Approved By (Planning Section Chief)		Date	Time
DARLA SMITH			LAURIE COX		09/28/2023	2000

Division/Group Assignment List (ICS 204 WF)
Controlled Unclassified Information//Basic

1. Incident Name:			3.			
BEDROCK LOOKOUT			Branch:		Division/Group	
2. Operational Period: DAY			LOOKOUT STAGING			
Date/Time From: 09/29/2023 0700 FRI		Date/Time To: 09/29/2023 2000 FRI				
4. Operations Personnel						
FIELD OPS		BRUCE MEYER JOSH RIEPE (T)		AIR ATTACK SUPERVISOR		
STAGING AREA MANAGER		PAUL RYAN				
5. Resources Assigned this Period						
Strike Team / Task Force / Resource Designator		LWD	Leader	Number Persons	Drop Off PT./Time	Pick Up PT./Time
HEQB O-1006		10/11	IAN INGOGLIA	1	LOOKOUT ICP/0700	LOOKOUT ICP /2000
SKD2 E-232 ROBERT S MURRAY (BDRK)		10/01	ARON GREGORY	2	LOOKOUT ICP/0700	LOOKOUT ICP /2000
LOGL E-351 MILLER		10/11	EVAN PETERSON	2	LOOKOUT ICP/0700	LOOKOUT ICP /2000
FORW E-595 MILLER TIMBER SERVICES		09/28	MICHAEL HONEYWELL	2	LOOKOUT ICP/0700	LOOKOUT ICP /2000
LOGT E-703 EERA - MARK JONES TRUCKING		10/12		1	LOOKOUT ICP/0700	LOOKOUT ICP /2000
LOGT E-704 EERA - MARK JONES TRUCKING		10/12		1	LOOKOUT ICP/0700	LOOKOUT ICP /2000
LOGT E-705 EERA - MARK JONES TRUCKING		10/12		1	LOOKOUT ICP/0700	LOOKOUT ICP /2000
LOGT E-706 EERA - MARK JONES TRUCKING		10/12		1	LOOKOUT ICP/0700	LOOKOUT ICP /2000
GRD1 E-484 TABLE MOUNTAIN FORESTRY		10/03	JUSTIN CODY	1	LOOKOUT ICP/0700	LOOKOUT ICP /2000
VROL E-471 DEAN INNOVATIONS		10/01	MICHAEL RHODEHAMEL	1	LOOKOUT ICP/0700	LOOKOUT ICP /2000
6. Control Operations/Work Assignments:						
Achieve efficiency with heavy equipment at Lookout Staging. Determine needs and right size for Lookout Staging area with equipment needed to achieve the best outcome for fire control objectives. Prepare Strube Flats for Willamette National Forest log decking.						
7. Special Instructions:						
Resources report to Lookout Staging 0800 each day. Staging resources need to monitor Command Channel.						
8. Division/Group Communication Summary						
Function	Channel	RX Frequency N/W	RX Tone/NAC	TX Frequency N/W	TX Tone/NAC	Mode
TACTICAL	SEE COM PLAN					
COMMAND	SEE COM PLAN					
9. Prepared By (Resource Unit Leader)			Approved By (Planning Section Chief)		Date	Time
DARLA SMITH			LAURIE COX		09/28/2023	2000

Division/Group Assignment List (ICS 204 WF)
 Controlled Unclassified Information//Basic

1. Incident Name:				3.		
BEDROCK LOOKOUT				Branch:	Division/Group	
2. Operational Period: DAY						
Date/Time From: 09/29/2023 0700 FRI		Date/Time To: 09/29/2023 2000 FRI				
4. Operations Personnel						
FIELD OPS	BRUCE MEYER JOSH RIEPE (T)					
DIVISION/GROUP SUPERVISOR	SCOTT CLEAVE DAVID MIRANDA (T)					
5. Resources Assigned this Period						
Strike Team / Task Force / Resource Designator	LWD	Leader	Number Persons	Drop Off PT./Time	Pick Up PT./Time	
TFLD (T) O-866	10/04	BRIAN SCHROEDER	1	LOOKOUT ICP/0700	LOOKOUT ICP/2000	
TFLD (T) O-968	10/02	DANIEL R SMITH	1	LOOKOUT ICP/0700	LOOKOUT ICP/2000	
HEQB (T) O-907	10/03	ERIC FRANTA	1	LOOKOUT ICP/0700	LOOKOUT ICP/2000	
HEQB (T) O-908	10/04	MARTHA DUDDLES	1	LOOKOUT ICP/0700	LOOKOUT ICP/2000	
DZR2 E-297 COUGAR RIDGE	10/10	RICK SOUL	2	LOOKOUT ICP/0700	LOOKOUT ICP/2000	
LOGL E-21 J & D	10/09	JUSTIN COMBS	2	LOOKOUT ICP/0700	LOOKOUT ICP/2000	
LOGL E-22 J & D	10/03	SAWYER LOGAN	2	LOOKOUT ICP/0700	LOOKOUT ICP/2000	
LOGL E-61 MARK JONES	10/10	JIM HILL	2	LOOKOUT ICP/0700	LOOKOUT ICP/2000	
LOGL E-241 NORTHWEST	10/08	LEO MILLER	2	LOOKOUT ICP/0700	LOOKOUT ICP/2000	
LOGL E-352 BRINKS	10/07	JEREMY MARTIN	2	LOOKOUT ICP/0700	LOOKOUT ICP/2000	
LOGL E-353 BRINK	10/09	ROBERT CRUMP	2	LOOKOUT ICP/0700	LOOKOUT ICP/2000	
LOGL E-354 BRINK	10/07	JAMIE SUMNER	2	LOOKOUT ICP/0700	LOOKOUT ICP/2000	
LOGL E-512 BRINK BROTHERS (BDRK)	09/13	ROBERT BRINK	2	LOOKOUT ICP/0700	LOOKOUT ICP/2000	
LOGL E-675 EERA - BRINK BROTHERS	10/02	JASON LARSON	2	LOOKOUT ICP/0700	LOOKOUT ICP/2000	
LOGT E-355 MILLER	10/10	BRAD HALL	1	LOOKOUT ICP/0700	LOOKOUT ICP/2000	
LOGT E-356 MILLER	10/01	CARL WAKESFIELD	1	LOOKOUT ICP/0700	LOOKOUT ICP/2000	
LOGT E-358 BRINK BROTHERS INC	10/04	DYLON HILLSMAN	1	LOOKOUT ICP/0700	LOOKOUT ICP/2000	
LOGT E-472 MARK JONES	10/13	STEVE HARTER	1	LOOKOUT ICP/0700	LOOKOUT ICP/2000	
LOGT E-508 BRINK BROTHERS (BDRK)	10/13	CASEY HULL	1	LOOKOUT ICP/0700	LOOKOUT ICP/2000	
LOGT E-509 MARK JONES TRUCKING (BDRK)	10/09	ANTHONY TERRA	1	LOOKOUT ICP/0700	LOOKOUT ICP/2000	
LOGT E-522 MARK JONES TRUCKING	09/30	GREG ALFRIEDO	1	LOOKOUT ICP/0700	LOOKOUT ICP/2000	
LOGT E-523 MARK JONES TRUCKING (BDRK)	09/30	MICAH JACKSON	1	LOOKOUT ICP/0700	LOOKOUT ICP/2000	
8. Division/Group Communication Summary						
Function	Channel	RX Frequency N/W	RX Tone/NAC	TX Frequency N/W	TX Tone/NAC	Mode
TACTICAL	SEE COM PLAN					
COMMAND	SEE COM PLAN					
9. Prepared By (Resource Unit Leader)			Approved By (Planning Section Chief)		Date	Time
DARLA SMITH			LAURIE COX		09/28/2023	2000

Division/Group Assignment List (ICS 204 WF)
Controlled Unclassified Information//Basic

1. Incident Name:				3.		
BEDROCK LOOKOUT				Branch:	Division/Group	
2. Operational Period: DAY						
Date/Time From: 09/29/2023 0700 FRI		Date/Time To: 09/29/2023 2000 FRI		EQUIPMENT GROUP		
4. Operations Personnel						
FIELD OPS	BRUCE MEYER JOSH RIEPE (T)					
DIVISION/GROUP SUPERVISOR	SCOTT CLEAVE DAVID MIRANDA (T)					
5. Resources Assigned this Period						
Strike Team / Task Force / Resource Designator	LWD	Leader	Number Persons	Drop Off PT./Time	Pick Up PT./Time	
LOGT E-526 MARK JONES TRUCKING,1	09/30	RON ELLIOTT	1	LOOKOUT ICP/0700	LOOKOUT ICP/2000	
LOGT E-527 MARK JONES TRUCKING 2	09/30	TERRY LEWIS	1	LOOKOUT ICP/0700	LOOKOUT ICP/2000	
LOGT E-528 MARK JONES TRUCKING 3	10/05	DAN BROWN	1	LOOKOUT ICP/0700	LOOKOUT ICP/2000	
LOGT E-610 OMALLEY BROTHERS	09/30	NICK PEREZ	1	LOOKOUT ICP/0700	LOOKOUT ICP/2000	
LOGT E-616 EERA - DEAN INNOVATIONS	09/30	BRETT LEE	1	LOOKOUT ICP/0700	LOOKOUT ICP/2000	
LOGT E-617 EERA - DEAN INNOVATIONS	10/10	TOM FELDHAKE	1	LOOKOUT ICP/0700	LOOKOUT ICP/2000	
LOGT E-676 EERA - MARK JONES	10/01	JIMMY HALL	1	LOOKOUT ICP/0700	LOOKOUT ICP/2000	
LOGT E-677 EERA - MARK JONES	10/01	ED TURNER	1	LOOKOUT ICP/0700	LOOKOUT ICP/2000	
TUBG E-542 BRINK BROTHERS	10/13	ROBERT BRINK	2	LOOKOUT ICP/0700	LOOKOUT ICP/2000	
SOF2 O-980	10/08	ERIC MESSENGER	1	LOOKOUT ICP/0700	LOOKOUT ICP/2000	
O-682 EMT 122	09/30	ETHAN JARRETT	1	LOOKOUT ICP/0700	LOOKOUT ICP/2000	
6. Control Operations/Work Assignments:						
<u>Task:</u> Remove deck material to prepare lines for rehab.						
<u>Purpose:</u> Prepare lines for rehab.						
<u>End State:</u> Lines clear of deck materials.						
7. Special Instructions:						
Needs: LOGT (long) x 4; TFLD X 1						
8. Division/Group Communication Summary						
Function	Channel	RX Frequency N/W	RX Tone/NAC	TX Frequency N/W	TX Tone/NAC	Mode
TACTICAL	SEE COM PLAN					
COMMAND	SEE COM PLAN					
9. Prepared By (Resource Unit Leader)			Approved By (Planning Section Chief)		Date	Time
DARLA SMITH			LAURIE COX		09/28/2023	2000

AIR OPERATIONS SUMMARY ICS-220

Incident Name / Number Lookout/Bedrock/Pete's Lake	Sunrise 0701	Sunset 1850	Pumpkin 1920	Time Prepared 1700	Date Prepared 9/28/23	Prepared By <i>Jason Brooks - AOB</i>
General Remarks, Safety Notes, Hazards, Air Operations Special Equipment, etc. *Order All Aircraft through Sunriver Helibase. *Be aware of retardant avoidance areas, 300ft away from waterways and bodies of water. *Sanitize Buckets before changing water sources. *Clear drop area/line before initiating drop sequence. *Be cognizant of all overhead and environmental hazards while working with Aircraft. *All GPS is to be collected in DD* MM.MM' *Avoid power lines near Trail Bridge Dip site. *Sunriver Helibase costs to: lookout.helibase@gmail.com				Shutdown 1900 Helibase Information Sun River Location 43 52.483 121 27.318 Phone 425-324-1368		Operational Period - Time 0700-2000 Medivac Ship Information Short Haul Name: N35HX Phone: 406-212-4515 Make/Model: AS350 B3 Location: Sunriver HLB Request Procedure for These Aircraft: Communications on Command

Incident Frequencies	RX	Tone	TX	Tone	AM/FM	Position	Name	Phone	EQUIPMENT/SUPPLIES
Lookout A/A (TFR)	118.0750				AM	AOBD		http://tfr.faa.gov/tfr2/list.html	Sunriver HLB trailer E-176
A/G primary	167.0625		167.0625		FM	AOBD-T			
A/G secondary	169.2000		169.2000		FM	ASGS	Jason Brooks	907-482-0738	
DECK Sun River	168.3500		168.3500		FM	ASGS			
TOLC Sun River	164.8625		164.8625		FM	ASGS-T	Ben Crittenden	916-809-0410	
IA A/G White ODF	151.3100	156.7	151.3100	156.7	FM	HEBM	(Sunriver) Jeremy McIntosh	775-843-6976	
IA A/G 50 USFS	168.2875		168.2875		FM				
AIR GUARD	168.6250		168.6250	110.9	FM				
						OR-WIF UAO	Nick White	541-520-5968	

HELICOPTERS Sunriver Helibase													
FAA #	TYPE	Make/Model	Helibase	Start	Avail	Remarks	FAA #	TYPE	Make/Model	Helibase	Start	Avail	Remarks
N27HX	3	Bell 407	Sunriver	0700	0800	Recon, Bucket							
N99WL	2	Bell 205++	Sunriver	0700	0800	Rappel, Bucket							
N35HX*	3	AS350B3E	Sunriver	0700	0800	Short-haul - *GACC Prepo							

UAS													
Call Sign	Type	Make/Model	Base	Start	Avail	Remarks	FAA #	Call Sign	Make/Model	Base	Start	Avail	Remarks

INCIDENT RADIO COMMUNICATIONS PLAN (ICS 205)		Incident Name		Date/Time Prepared		Operational Period Date/Time					
		Lookout		9/28/2023 1900		09/29/2023 - All Shifts					
Zh Ch	Function	Channel Name/Trunked Radio System Talkgroup	Assignment	RX Freq N or W	RX Tone/NAC	IX Freq N or W	Tx Tone/NAC	Dev	Pwr	Mode A, D or M	Remarks
1	COMMAND	CMD 1	ALL BRANCHES	169.5375	156.7	164.7125	156.7	N	H	A	Located East of Fire Area
2	COMMAND	CMD 2	ALL BRANCHES	168.4750	156.7	165.4000	156.7	N	H	A	Located NW of Fire Area
3	COMMAND	CMD 3	ALL BRANCHES	170.2875	156.7	163.6125	156.7	N	H	A	Located on Mt. Bachelor/ Pete's Lake
4	COMMAND	CMD 4	ALL BRANCHES	171.0625	156.7	163.8250	156.7	N	H	A	Covers ICP + Hwy 126
5	COMMAND	CMD 5	NOT IN USE	170.6875	156.7	166.5750	156.7	N	H	A	Not In Use
6	TACTICAL	TAC 1	DIV A / C	168.0500	156.7	168.0500	156.7	N	H	A	Division Alpha & Division Charlie
7	TACTICAL	TAC 2	DIV T	168.2000	156.7	168.2000	156.7	N	H	A	Division Tango
8	TACTICAL	TAC 3	DIV H	168.6000	156.7	168.6000	156.7	N	H	A	Division Hotel
9	TACTICAL	TAC 4	DIV L	168.2500	156.7	168.2500	156.7	N	H	A	Division Lima
10	TACTICAL	TAC 5	DIV P	166.7250	156.7	166.7250	156.7	N	H	A	Division Papa
11	TACTICAL	TAC 6	Equip Grp	166.7750	156.7	166.7750	156.7	N	H	A	Equipment Grp
12	Forest Rptr.	Frissell	ALL DIVS	172.2500	103.5	164.9125	162.2	N	H	A	To Eugene Dispatch
13	Air-to-Ground	A/G PRI	ALL DIVS	167.0625	NONE	167.0625	NONE	N	H	A	Primary AIR TO GROUND
14	Air-to-Ground	A/G SEC	ALL DIVS	169.2000	NONE	169.2000	NONE	N	H	A	SECONDARY AIR TO GROUND
15	Air-to-Ground	VMED 29	MEDEVAC	155.3475	NONE	155.3475	156.7	N	H	A	Life Flight
16	EMERGENCY	AIRGUARD	EMERGENCY	168.6250	NONE	168.6250	110.9	N	H	A	EMERGENCY USE ONLY
Prepared By (Communications Unit Leader)				Incident Location:		Forest / Unit / Jurisdiction:		Latitude: " N		Longitude: W	
				County: OR		State: OR		Latitude: " N		Longitude: W	
Lookout Communications (661) 349-1513											

All Lookout fire resources should use Clone 93 Lookout as of 9/3/2023. All Divisions, use Command repeater that's best in your location.

INCIDENT RADIO COMMUNICATIONS PLAN (ICS 205)		Incident Name		Date/Time Prepared		Operational Period Date/Time					
		Bedrock		9/28/2023 1900		09/29/2023 - All Shifts					
Zn Ch	Function	Channel Name/Trunked Radio System Talkgroup	Assignment	RX Freq N or W	RX Tone/NAC	TX Freq N or W	TX Tone/NAC	Dev Pwr	Mode A, D or M	Remarks	
1	TACTICAL	TAC 1	North Repair	168.2500	136.5	168.2500	136.5	N H	A	North Repair	
2	TACTICAL	TAC 2	South Repair	166.7750	136.5	166.7750	136.5	N H	A	South Repair	
3	TACTICAL	TAC 3		166.7250	136.5	166.7250	136.5	N H	A	UNASSIGNED	
4	TACTICAL	TAC 4		168.6000	136.5	168.6000	136.5	N H	A	UNASSIGNED	
5	TACTICAL	TAC 5		168.2000	136.5	168.2000	136.5	N H	A	UNASSIGNED	
6	COMMAND	CMD 6	ALL BRANCHES	170.2500	136.5	162.8125	136.5	N H	A	ALL - COMMAND (WEST) BEAR MTN	
7	COMMAND	CMD 7	NOT IN USE	170.0000	136.5	166.6750	136.5	N H	A	Not In Use	
8	COMMAND	CMD 8	ALL BRANCHES	170.4125	136.5	165.9625	136.5	N H	A	ALL - COMMAND (EAST) INDIAN FALL CRK	
9	COMMAND	CMD 9	ALL BRANCHES	173.0375	136.5	167.3250	136.5	N H	A	ALL - COMMAND (NE) PERNOT MTN	
10	COMMAND	CMD 10	ALL BRANCHES	171.0375	136.5	162.1875	136.5	N H	A	ALL - COMMAND (SOUTH) SINKER MTN.	
11	COMMAND	CMD 11	NOT IN USE	170.3125	136.5	164.6000	136.5	N H	A	Not In Use	
12	TACTICAL	TAC 12	NOT IN USE	166.6000	136.5	166.6000	136.5	N H	A	Not In Use	
13	Air-to-Ground	A/G PRI	ALL DIVS	172.4625	NONE	172.4625	NONE	N H	A	Do Not Use/Use Lookout A/G Pri	
14	Air-to-Ground	A/G SEC	ALL DIVS	172.6750	NONE	172.6750	NONE	N H	A	Do Not Use/Use Lookout A/G Sec	
15	Air-to-Ground	VMED 29	MEDEVAC	155.3475	NONE	155.3475	156.7	N H	A	Life Flight	
16	EMERGENCY	AIRGUARD	EMERGENCY	168.6250	NONE	168.6250	110.9	N H	A	EMERGENCY USE ONLY	
Prepared By (Communications Unit Leader)				Incident Location:				Forest / Unit / Jurisdiction:			
				<i>Byron M. Mosby</i>				Latitude: " N Longitude: W			
				Lookout Communications (661) 349-1513				State: OR County: Latitude: " N Longitude: W			

All Divisions, use Command repeater that's best in your location.

INCIDENT RADIO COMMUNICATIONS PLAN (ICS 205)			Incident Name FOREST IA			Date/Time Prepared 9/28/2023 1900			Operational Period Date/Time 09/29/2023 - All Shifts		
Zh Ch	Function	Channel Name/Trunked Radio System Talkgroup	Assignment	RX Freq N or W	RX Tone/NAC	TX Freq N or W	TX Tone/NAC	Dev	Pwr	Mode A, D or M	Remarks
1	TACTICAL	TAC 1	TAC 1	166.6000	136.5	166.6000	136.5	N	H	A	IA TAC
2	TACTICAL	TAC 2	RED NET	151.3400	156.7	151.3400	156.7	N	H	A	ODF RED NET
3	Air-to-Ground	A/G	White NET	151.3100	156.7	151.3100	156.7	N	H	A	ODF A/G
4	TACTICAL	PROJ MDL	PROJ MDL	168.7750	103.5	168.7750	103.5	N	H	A	USFS MIDDLE FORK PROJECT
5	COMMAND	TIMBER CK	TIMBER CK	170.4625	103.5	164.8250	131.8	N	H	A	USFS TIMBER CREEK
6	COMMAND	CMD 6	ALL BRANCES	170.2500	136.5	162.8125	136.5	N	H	A	BEDROCK COMMAND (WEST) BEAR MTN
7	COMMAND	CMD 7	Not In Use	170.0000	136.5	166.6750	136.5	N	H	A	Not In Use
8	COMMAND	LOWELL	LOWELL	170.4625	103.5	164.8250	110.9	N	H	A	USFS LOWELL
9	COMMAND	CMD 9	ALL BRANCES	173.0375	136.5	167.3250	136.5	N	H	A	BEDROCK COMMAND (N0) PERNOT MTN
10	COMMAND	CMD 10	ALL BRANCES	171.0375	136.5	162.1875	136.5	N	H	A	BEDROCK COMMAND (SOUTH) SINKER MTN.
11	Air-to-Ground	A/G 50	ALL DIVS	168.2875	NONE	168.2875	NONE	N	H	A	A/G PRIMARY - LOCAL
12	Air-to-Ground	A/G 59	ALL DIVS	169.1125	NONE	169.1125	NONE	N	H	A	A/G SECONDARY - LOCAL
13	Air-to-Ground	A/G PRI	ALL DIVS	172.4625	NONE	172.4625	NONE	N	H	A	AIR TO GROUND PRIMARY - BEDROCK
14	Air-to-Ground	A/G SEC	ALL DIVS	172.6750	NONE	172.6750	NONE	N	H	A	AIR TO GROUND SECONDARY-BEDROCK
15	Air-to-Ground	VMED 29	MEDEVAC	155.3475	NONE	155.3475	156.7	N	H	A	MEDICAL EVACUATION ONLY
16	EMERGENCY	AIRGUARD	EMERGENCY	168.6250	NONE	168.6250	110.9	N	H	A	EMERGENCY USE ONLY
Prepared By (Communications Unit Leader)				Incident Location:		Forest / Unit / Jurisdiction:		Latitude: " N Longitude: " W			
<i>David Mosby</i>				County: OR		State: OR		Longitude: " W			
Lookout Communications (661) 349-1513											

All Lookout fire resources should use Clone 93 as of 9/3/2023. All Divisions, use Command repeater that's best in your location.



Fire Weather Forecast

Friday September 29, 2023



FORECAST NO: 66 **FIRE:** Bedrock/Lookout/Horse Creek/Pothole
PREDICTION FOR: Friday, Sep 29, 2023 **UNIT:** Willamette N.F.
ISSUED: 2000, Sep 28, 2023 **Incident Meteorologist:** Brian Adams (T)

- **DISCUSSION:** On and off shower activity is expected through much of the daytime and evening hours. Cool temperatures and high humidity persist with light winds at lower elevations and light north-northwest flow along ridgetops. Drier and warmer conditions then arrive for Saturday.

FRIDAY:

- **WEATHER:** Cloudy with a 70% chance of showers throughout the day, rainfall of 0.10-0.25" expected.
- **WIND (20 FT):**
 - **Valleys/Lwr Slopes:** Downslope 3-5 mph through 1200, then NNW 3-7 mph.
 - **Ridges/Upr Slopes:** Downslope 3-7 mph through 1200, then NNW 4-8 mph with gusts to 14 mph.
- **MAX TEMPERATURES:** 50-55 valleys and mid-slopes, 48-53 ridges.
- **MIN RH:** 75-85%
- **INVERSION:** Weak to none. **MID HAINES:** 2.

FRIDAY NIGHT:

- **WEATHER:** Cloudy, 70% chances for intermittent light rain overnight, additional rainfall of up to 0.10" expected.
- **WIND (20 FT):**
 - **Valleys/Lwr Slopes:** NNW 4-8 mph becoming downslope 3-5 mph.
 - **Ridges/Upr Slopes:** NNW 5-10 mph.
- **MIN TEMPERATURES:** 38-44.
- **MAX RH:** 90-100%

SATURDAY:

- **WEATHER:** Isolated showers possible through 0900, followed by clearing skies.
- **WIND (20 FT):**
 - **Valleys/Lwr Slopes:** Downslope 3-5 mph through 1200, then upslope 3-7 mph.
 - **Ridges/Upr Slopes:** N 4-8 mph through 1200, then NNW 5-9 with gusts to 15 mph.
- **MAX TEMPERATURES:** 58-62 valleys and mid-slopes, ridges 50-55.
- **MIN RH:** 45-55%
- **INVERSION:** Weak, mixed by 0900-1100. **MID HAINES:** 2.

Extended outlook: Sunday through Wednesday: Aside from some slight chances for precipitation late Monday night into Tuesday, dry conditions are largely expected for next week. Highs will warm up into the 70s by midweek with slightly lower daytime humidities, though morning humidity recoveries are expected to be good to excellent through the week. After some light northerly to north-northeasterly flow on Sunday, light westerly to northwesterly flow will remain in place through Tuesday.

Sunrise: 07:08 PDT **Sunset:** 18:59 PDT

FIRE BEHAVIOR FORECAST



FORECAST NUMBER: 48	TYPE OF FIRE: Wildfire
FIRE NAME: Lookout/Bedrock/Horse Creek/Pothole/Pete's Lake	OPERATIONAL PERIOD: Friday, 29 September 2023
DATE ISSUED: 28 September 2023	TIME ISSUED: 2000 Hours
UNIT: Willamette NF, OR-WIF	SIGNED: Forrest Ownbey /s/ Forrest Ownbey – FBAN

INPUTS

WEATHER SUMMARY: See Fire Weather Forecast for Details

Persistent moist and cool weather conditions with lighter winds today. Excellent humidity recovery.

FUELS:

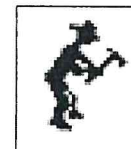
Fuels in the fire area consist of Timber Litter (TL5) and Timber Understory (TU5) and lichen in the canopy. The Willamette National Forest and area has received approximately one inch of precipitation at the end of September. Live fuel moisture levels are good and resistant to contributing to fire spread. ERC's are well below the 90th percentile.

OUTPUTS

FIRE BEHAVIOR GENERAL:

Gravity and steep terrain creates potential for rolling material, fuel moisture content is high and do not create a receptive fuel. Primary fire activity will be smoldering in duff, stumpholes and under dense canopy cover.

- Grass – FM 2 (Timber grass / understory)
 - Rate of Spread – 1 to 3 chains per hour possible with flame lengths up to 1 foot.
- Brush – FM 5 (Shrub fuel type)
 - Rate of Spread – 2 to 4 chains per hour possible with flame lengths up to 2 feet.
- Timber – TU5 & TL5 (Timber Understory, Timber Litter)
 - Rate of Spread – 2 to 4 chains per hour possible with flame lengths up to 4 feet.



PIG 5-15% Spotting Distance .0 miles Torching Not Likely Uphill Crown Not Likely

Fire behavior predictions are for the hottest and driest period of the day, gusts could increase fire behavior rates.

FIRE BEHAVIOR SPECIFIC:

Petes Lake & Lookout Fire: Precipitation should eliminate potential for creeping fire today. Expect to see smoldering of stumpholes, duff and heavy fuels.

Bedrock, Pothole and Horse Creek Fire: Fire growth is not likely. Smoldering of protected fuels will be the excitement for fire activity.

IA: Conditions exist for slow moving fire spread with flame lengths that direct attack should be effective.

AIR OPERATIONS:

Cloudy, fog and precipitation should limit visibility in over the fire area.

SAFETY

Maintain good situational awareness, as the finish is approaching keep alert and monitor your surroundings. Gusty winds, slick ash, stumpholes, rolling material and weakened trees are some hazards you might have a close encounter with.



Resource Advisor Message - Lookout and Bedrock Fires

Joe Doerr, Lead READ, 541-912-4750 joseph.doerr@usda.gov; James Rudisill, Danger Tree Lead READ, 541-505-4773 Thomas.Rudisill@usda.gov

With rain coming take a look at the pumps and any fuel storage. Please ensure containment trays are empty, with fresh pads. Use visqueen, p-cord to make a tent over the pump and fuel where possible. Driving around please look for plugged culvert and ditches, and make sure water can flow even if you can't do a full repair.

Engineering and Roads

- Do not track heavy equipment on paved roads without the proper mitigations (ie. street grousers, rubber mats, etc.).
- If any road issues or concerns are encountered, please contact a REAF.

Dozer Lines

- Please work with Resource Advisors to clear proposed dozer lines.
- Please minimize the depth of the dozer line to the least extent required to meet objectives. Deep cuts are expensive, time consuming, and difficult to repair.

Heritage & Cultural

All cultural resources and human remains are protected by law. **Leave them in place- no collecting.** Call Resource Advisor if cultural resource like arrowheads, flakes/chips, or historic artifacts like cans & bottles are found and they will investigate.

Noxious Weeds

WEED WASH STATION:

- The Weed Wash stations are operational and located at Lookout Staging (Rock Quarry) and Lookout ICP
- Please use the weed wash upon arrival at the incident, and during demob
- Avoid the following weed: Slender False Brome and Spotted Knapweed

REDUCE THE SPREAD: Brush off packs & boots (especially laces) before leaving fire camp.



Tree Felling Operations

Please keep equipment on road surface to the greatest extent possible

Log Processing:

- Utilize existing openings and landings for decking, ditch lines/roadside is acceptable
- Process trees down to a 6" top (small end diameter). Use remaining for firewood logs, rehab, or chip
- Preferred Log Lengths (maximize length whenever possible): 41 foot Max – 17 foot Min
- 2' increments below 41', keeping logs as long as possible (41', 39', 37', etc....) Process unburnt trees on the unburnt side of the fireline. Process burnt trees on the burnt side of the fireline.
- Keep processed slash and tops out of decks and off roads
- If possible, sort decks by species and log lengths

Snags and Hazard Trees:

Old growth is a key value. Limit snagging to operational needs & limit bucking to retain long bowls of large felled trees or snags.

Water Quality and Fisheries

AERIAL DIPPING:

- Aerial dipping should only occur at approved dip sites. Blue River Res. has a use restriction to facilitate dipping. Check with your REAF for approval of dipping sites.
- Be sure to wash buckets when new aerial resources arrive at the fire, when switching dips sites, or when returning to the fire from off forest.

WATER DRAFTING:

- Limited Drafting is available at the bridge across Lookout Creek on the 1506 road in section 28. Check with the REAF for additional drafting locations as needed.
- Utilize fish screens when in fish bearing waterbodies (REAFs have these available).
- Maintain sufficient flow as to not dewater downstream reaches
- Utilize splash pans and absorbent pads. REAFs will assist if given the location.

CHIPPING STANDARDS:

- Provide a 30- foot buffer of no chipping at water crossings or culverts.
- Do not place chips into road ditch.
- Do not chip onto a steep slope where chips will slide back into the ditch.
- Broadcast chipped material, ensuring that chips are no more than 4" deep.



SAFETY MESSAGE

September 29, 2023

Situational Awareness: Driving Tips

- Drive at a reasonable and safe speed, which will allow you enough time to react to hazards.
- Use pullouts to let oncoming traffic go by.
- Yield to uphill traffic and trucks.
- Avoid soft shoulders.
- Expect the unexpected.
- Remove hazards (leaning trees, rocks, and limbs) from the driving area.
- Get out and walk the road when it becomes questionable.
- Use your mirrors and a spotter when backing.
- Use your seatbelts.
- Look ahead and visualize the path you want the tires to follow.
- Know when to turn around, turn around in a good spot before you have too.
- All occupants shall be restrained while riding in a moving vehicle.

<u>Four Critical Errors that are made while driving</u>	<u>Four States of Being that Help us to Error</u>
<ol style="list-style-type: none">1. Eyes not on the task – Texting while you drive or looking at the scenery.2. Mind not on task – Talking on the phone or radio while driving.3. Being in the line of fire – A falling snag hits the truck.4. Losing our balance or traction – We are driving too fast for the road conditions.	<ol style="list-style-type: none">1. Rushing – Driving too fast for the road conditions to meet time deadlines.2. Frustration – Dealing with a long, rough road that makes travel slow.3. Fatigue – Lack of sleep, long hours of work or being on a fire for a week.4. Complacency – We lose focus because of past successes. We continue to use bad driving habits because they have not caused an accident yet.

Safety Officers: Duane Van Woert, Gary McBride, Brian Wesemann, Kurt Krech, Jeff Kerr

IAP Component Deliberate Risk Assessment Hazard Summary September 29, 2023	
Hazard	Mitigation
Driving/road conditions	<ul style="list-style-type: none"> • Reduce windshield time (2:1 work ratio). • Signing of all incident roads that provide access to divisions. • Daily updated travel plan maps. • Practice defensive driving. In local communities obey the posted speed limits.
Overhead hazards Aviation Powerlines	<ul style="list-style-type: none"> • Select tactics that minimize firefighter exposure. • Review IRPG pgs. 61-79, when working near air operations. • Identify hazardous trees and snags, fell as appropriate. • Review IRPG pgs. 22-23, when working near powerlines.
Personal Health/Wellness	<ul style="list-style-type: none"> • Wash hands. • Remove dirty Nomex shirts prior to entering chow lines. • Use hand sanitizer. • Mask will be available if needed (camp crud, covid, air quality in camp)
Repair/ backhaul	<ul style="list-style-type: none"> • Identify and communicate hazards and manage appropriately, including hazard trees. • Drive carefully on forest roads and when transiting Hwy. 126. • Know the location of the nearest medical resources. • Use 4X4 or UTV's to shuttle supplies to areas where stake side and van trucks can stay on hardened roads
Public Interaction	<ul style="list-style-type: none"> • Be considerate of the public! We want to interact with the public, answer questions.
Communications	<ul style="list-style-type: none"> • Human repeaters. • Change batteries often.
Mental Health	<ul style="list-style-type: none"> • Critical Incident Stress Management. • Human Resource contacts available for all resources.
Gravity Hazards	<ul style="list-style-type: none"> • Post lookouts. • Situational awareness of rolling materials. (Rocks, tree's) • Situational awareness of falling green/ snag tree's
Heavy Equipment	<ul style="list-style-type: none"> • Blind zone (Operator) • Rolling material (rocks, tree's, stumps) • Flying debris • Tree strikes
IA	<ul style="list-style-type: none"> • Follow protocols and communications links established with NW10 • IA resources designated in IAP, use closest forces and leadership assigned to supervise IA forces during a response. • IA resources must be familiar with IA comms channel group.

Team 10 Line Supply Order

Date & Time: Deliver To Location/Time
 Order Placed: (Division, Drop Point, Heli Spot, Lat/Long)

Order received in Communications (name & time)
 Order received in Supply by (name & time)
 Order received in Transportation by (name & time)
 Order received in Helibase by (name & time)

Order shipped to line by (name & time)

Special Instructions/line length/ elevation

Ground Contact

Contact Freq.

Delivery Method (Driver, Heli, DVS to P/U)

Order

TEAM 10

HOSE LAY KIT One Mile Kit

Item	Amount
1 1/2 in. synthetic hose	5300 ft
1 in. synthetic hose	2700 ft
1 1/2 in. gated wye	27
1 1/2 in. - 1 in. reducers	27
Twin Tip Forester Nozzles	27

Toy Hose Compliment Kit	
3/4 in. garden hose	2700 ft
3/4 in. gated wyes	27
3/4 in. Nozzle	27
3/4 in. valve, shutoff, ball	27
1 in. - 3/4 in. reducer	27

Sprinkler Kit NFES # 1048	
Item	Amount
Sprinkler head w/couplings	4
3/4 in. garden hose	250 ft
1 1/2 x 1 1/2 x 1 in. Tee	4
1 x 3/4 reducer	4
1 1/2 in. - 1 in. reducers	1
3/4 in. gated wyes	2
3/4 in. valve, shutoff, ball	4
3/4 in. Nozzle	1
1 in. nozzle, pastic 60 gpm	1
10 in. adjustable wrench	1

NOTE: 3 kits to 1 mark III pump, depending on slope

LINE ORDER PROCESS

All line orders will go through the Comm. Unit, preferably via radio

***Thank you for joining NW Team 10 in our efforts to manage the
Lookout/Bedrock Fires.***

A few things to know.....

Check in....

Check-in is done virtually. The check-in form can be found by using the QR Code on the front of the IAP. Call 509-856-5545.

Be prepared to provide the listed documents by email, scan or copy to
2023.Lookout.checkin@firenet.gov

Overhead - Red Card/Training doc, Resource Order and hire papers if needed.

Equipment - Red Cards, Resource Order, Inspection doc. and contract.

Crew - Red Cards, Resource Order, Hire papers, Contract and manifest.

First Day of Work....

If you are coming from another fire, your first day of work on this fire is your first day on the other fire.

If you traveled fresh and are arriving at fire camp today, tomorrow is your first work day (even if you are sent right out to work)

If you had R&R days since working a previous fire, you are starting fresh. If you are arriving today, your first work day is tomorrow.

Finance

Make sure you turn your hire papers and/or contract in.

All time can be turned in to Finance, virtually using your camera and emailing it as a pdf, or scanning it in as a pdf to 2023.Lookout.finance@firenet.gov

Crew Swaps....

Crew Swaps are done through Check-in/Demob.

Fill out the crew swap form and communicate with Check-in/Demob. Be prepared to show Red Card for incoming person(s).

Swapping crew members does not mean equipment will be kept for a longer duration. Length of time on the fire for equipment is based on the need.

Personnel time on the fire is based on need and 30-day total. to include time taken off during that 30 days.

Extension....

Extension Requests form (State or Federal) for Agency Personnel must be submitted 4-days prior to the scheduled demob date and must include DIVS/Group Supervisors signature.

Because extension requests for Contract Resources are based on need, they should be submitted on an ICS 213 form, 4-days prior to scheduled demob and be signed by the DIVS/Group Supervisor before going to Check-in/Demob.

All extensions are turned into Check-in/Demob for home supervisor/company owner verification.

Having an approved extension does not mean resource will be kept for the extension duration as it is based on need.

BEFORE YOU GO TO Finance & DEMOB Check and Follow the schedule



Go through Weed Wash and Inspection



Return Supplies



Return Radios



**At Scheduled time.....
Finish your Finances**

Go to DEMOB Desk to Finalize your Demob process.

**Questions Regarding your DEMOB Call
360-259-9120**



DEMOB

LOOKOUT US-OR-WIF-230327

09/29/2023

EQUIPMENT

E-14	0700	(POT2)	NO DROUGHT
E-580	0700	(GWT3)	GWT3 - ALLIED WATER SERVICE INC -
E-524	0720	(ENG3)	WILDLAND SUPRT - MICHAEL
E-506	0740	(ENG6)	ENG6 - TRI-STATE FIRE LLC - A24507
E-607	0740	(FORW)	AXSUS
E-472	0800	(LOGT)	MARK JONES
E-406	1200	(SLP2)	EERA - STORM SERVICES -
E-335	1700	(CHP1)	AXSUS

OVERHEAD

O-625	0715	(EQPM)	GRIFFIN, TODD
O-789	0700	(EMPF)	MINUTEMANEMS,
O-745	0700	(ASGS)	SCULLY, GREGORY
O-760	0715	(READ)	BUTZ, RAMONA
O-759	0730	(THSP)	VOSSMER, MARISSA A
O-790	1600	(FDUL)	LEGGINS, CLYDE BARRY
O-668	1700	(RADO)	PITRONE, RUSSELL PETER

BEDROCK US-OR-WIF-230266

EQUIPMENT

E-509	0720	(LOGT)	MARK JONES TRUCKING (BDRK)
E-545	1700	(EXC1)	BFC LIMITED

TENTATIVE RELEASE

LOOKOUT US-OR-WIF-230327

09/30/2023

EQUIPMENT

E-542	0700	(STMH)	MOUNTAIN VIEW TREE
E-650	0700	(CHP1)	STMH - SS WELDING & CATTLE LLC - IC
E-338	0720	(WTS2)	SHAN CREEK

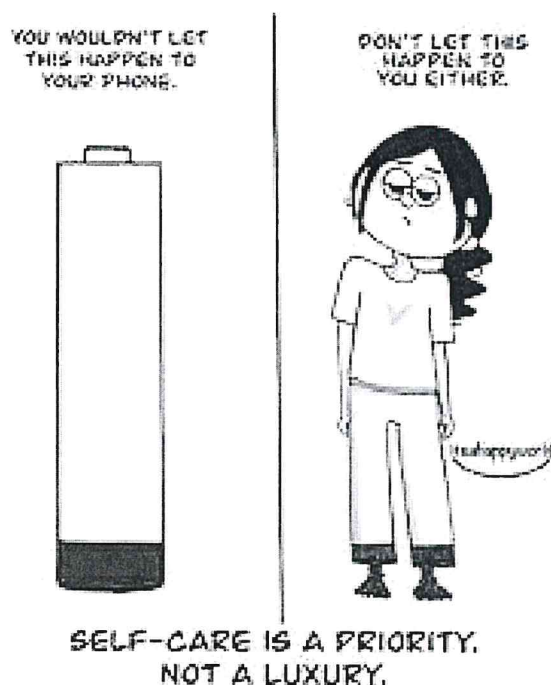
OVERHEAD

O-751	0700	(AOBD)	STUMP, KYLE
O-794	0720	(FMOD)	FALLER MODULE
O-795	0740	(FMOD)	AANDCCUTTING LIMITED LIABILITY -

Human Resource Message Bedrock, Lookout, Petes Lake August 18, 2023

We are late in the season and we are seeing those 1000-mile stares at morning briefings. This can be a sign that we are becoming fatigued and need to do some self-care.

You all are elite athletes and valuable members of the wildland community. We need to pace ourselves as we are only part way through this marathon. Sometimes the words don't make an impact but a picture speaks 1000 words and maybe this will help courtesy of the Clairvoyant Coach.



Thought for the day: Spilling coffee is the adult equivalent to losing a balloon.

**HRSP's – Debbie Robinson
509-899-5010**

**Mike Baines
724-678-6147**

Thought for the Day – The mirror never smiles first.

Training Message

ARE YOU ORDERED AS A TRAINEE?

If you are ordered as a trainee, please sign up for the incident trainee program. Please register with the incident training specialist by filling out the questionnaire from the QR code in the IAP, please email scans or pictures of your incident qualification card and front cover of your task book to adam.micone1@outlook.com.

During your time on this incident ensure you work with your trainer to complete the tasks you need evaluated if possible. Ensure your trainer evaluates your position task book tasks that you can complete, and they complete your position task book evaluation page as well as a performance evaluation (ICS-225). I have a training folder within the QR Code with both a position task book evaluation record and a performance evaluation for your trainer to use if needed. Upon completion of your assignment (***please complete a couple days early to speed up demob***), please email, scans or pictures of your position task book evaluation and performance evaluation (ICS-225) to adam.micone1@outlook.com . These will be checked for accuracy, logged in the system, and sent on to your home unit training contact through email. Adam is working remotely. Please contact me if you have any further questions, please reach out to adam.micone1@outlook.com or 509-589-1387, we look forward to serving you.

Have a great Day!

Adam Micone

NW Team 10 Incident Training Specialist (t)

FIRE INFORMATION

Phone: 541-215-6735

Email: 2023.lookout@firenet.gov



EMAIL

Inciweb (Lookout): inciweb.wildfire.gov/
incident-information/orwif-lookout-fire

Inciweb (Bedrock): inciweb.wildfire.gov/
incident-information/orwif-bedrock-fire

Inciweb (Petes Lake): inciweb.wildfire.gov/
incident-information/orwif-petes-lake-fire

Facebook (Lookout): facebook.com/LookoutFire2023

Facebook (Bedrock): facebook.com/BedrockFire2023

Facebook (Petes Lake): facebook.com/Petes Lake Fire Info

Facebook (NW Team 10): facebook.com/NorthwestTeam10

Help us tell the story of this fire with pictures
and short videos (30 seconds or less)

SHARE YOUR PHOTOS OR VIDEO

Catch us during the morning briefing or
send to the PIO team via email to

2023.peteslake@firenet.gov

Please provide your name for photo credit and
include basic info about where the photo was
taken and what's happening in it.

LOST AND FOUND

Information Trailer at the ICP

(38656 Kickbush Lane, Springfield, OR 97478)

PACKAGES

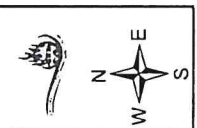
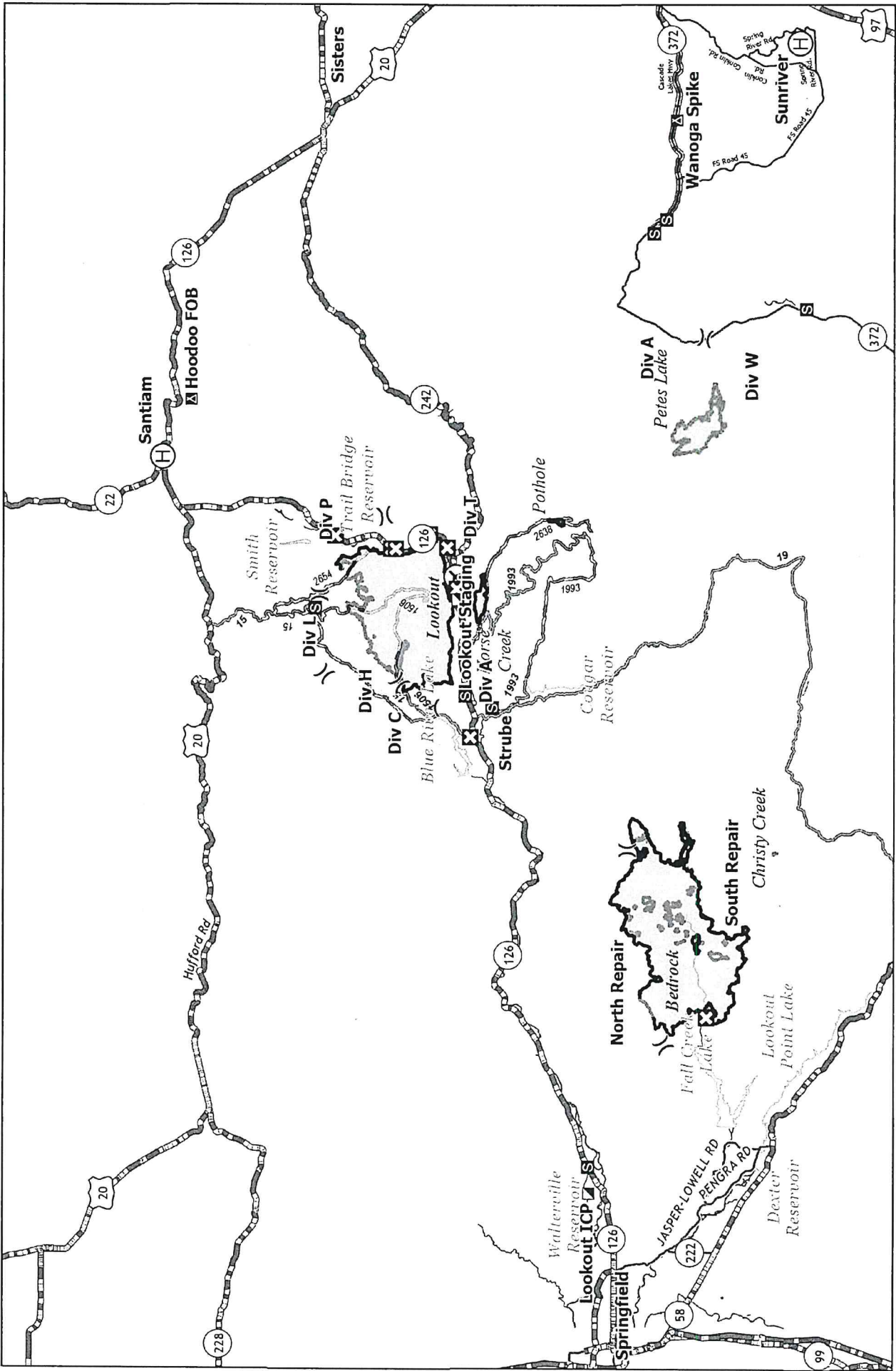
Your Name, Your Position, Contact Phone Number
Lookout Fire

Walterville Post Office - General Delivery

39333 McKenzie Hwy

Walterville, OR 97489

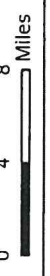




Lookout ICP : 38601 Camp Creek Road, Watterville, OR 97489
 (14.5 Miles from Eugene, 19 min) - Weed Wash Station
Lookout Staging: 54547 McKenzie Hwy, Blue River, OR 97413 - Weed Wash Station
Hoodoo FOB: 27400 Big Lake Rd., Sisters, OR 97759 - Weed Wash Station
Wanoga Spike: 15523 Cascade Lakes Hwy, La Pine, OR 97739

- Airstrip or Airport
- Helibase
- Division Break
- Incident Command Post
- Closure
- Camp
- Staging Area
- Fire Area

Transportation
 Bedrock - ORWIF-230266
 Lookout - ORWIF-230327
 Petes Lake - ORWIF-230409
 09/29/23



Incident/Project Name			Operational Period				
LOOKOUT/BEDROCK			Date/Time:	09/29 - 09/30 0700-0700			
Ambulance Services							
Name	Complete Address	Phone & EMS Frequency	Advanced Life Support (ALS) Yes No				
AMBO 308 (Lookout Transport)	Blue River Reservoir	Command Channel	X				
Bend Fire Department	1212 SW Simpson Ave, Bend, OR 97702	911 / 541-693-6911	X				
Sister-Camp Sherman R.F.P.D	301 South Elm Street Sisters, OR		X				
Eugene/Springfield Fire (Lookout Transport)	1705 W. 2 nd Ave Eugene, OR	Lane County 911	X				
Air Ambulance Services							
Name	Phone	Type of Aircraft & Capability					
Life Flight – Eugene or Redmond	Order through Lookout Comms 800-232-0911	Critical Care Team of Paramedics and RN NVG, Freq: VMED 29					
Airlink - Bend	Order through Lookout Comms 800-353-0497	Critical Care Team of Paramedics and RN NVG, Freq: VMED 29					
Wenatchee Helitack Short Haul	Ordered by Lookout Comms	ALS, Short Haul, not-dedicated to the incident – Daytime use only					
Hospitals							
Name Complete Address	GPS Datum – WGS 84 Coordinate Standard Degrees Decimal Minutes		Travel Time Air Gnd		Phone	Helipad Yes No	Level of Care Facility
PeaceHealth Sacred Heart Medical Center 333 Riverbend Drive Springfield, OR 97477	Lat:	44° 04.876'N	10 min	20 min	541-222-6931	X	Level 2 Trauma
	Long:	123° 01.588' W					
	FAA	OG64					
St Charles Bend 2500 NW Neff Rd Bend, OR 97701	Lat:	44°04.102'N	45 mins	2 hours 20 min	541-382-4321	X	Level 2 Trauma
	Long:	121°16.054'W					
	FAA	54OR					
Legacy Emanuel Hospital 3001 N Gantenbein Ave Portland, OR 97227	Lat:	45°32.668'N	45 mins	2 hours	(406) 329-5635	X	Level 1 Trauma Burn Center
	Long:	122°40.293'W					
	FAA	7OR5					
OHSU Hospital 3181 SW Sam Jackson Park Rd, Portland, OR 97239	Lat:	45°29.950'N	45 mins	2 hours	ER (503) 494-7550	X	Level 1 Trauma
	Long:	112°41.110'W					
	FAA	9OR6					

MEDICAL PLAN (ICS 206 WF)

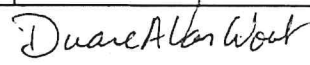
Controlled Unclassified Information//Basic

Division Branch Group	Area Location Capability		
ICP	EMS Personnel:	Ryan Herrera	MEDL 253-297-0537
		Mariann Turley	MEDL 509-496-9370
		Trina McCandless	MEDL 907-305-0979
		AMBO 310 - Ian Morse (EMPF)	423-596-1335
	Equipment Available on Scene:	ALS Ambulance, Medical Yurt w/ OTC Meds	
	Medical Emergency Channel:	Lookout Communications	
	Approved Helispot:	N/A	
NORTH REPAIR	EMS Personnel:	REMS 1 - Sage Stewart (EMTF) 479-806-0860	
		AMBO 15 - Chris Olguin (EMPF) 505-382-5352	
	Equipment Available on Scene:	ALS Ambulance, ALS UTV w/ Technical Rescue	
	Medical Emergency Channel:	Bedrock Communications	
	Approved Helispot:	H-2, H-5, Cascara Camp	
SOUTH REPAIR	EMS Personnel:	AMBO 10 - Nick Kemmerer (EMPF) 321-750-1197	
		MEDIC 221- Derek Jordan (EMPF) 803-727-7096	
	Equipment Available on Scene:	BLS, ALS Ambulance	
	Medical Emergency Channel:	Bedrock Communications	
	Approved Helispot:	H-5, H-10, H-32	
DIV A/C	EMS Personnel:	AMBO 308 - Ali Hammoudeh (EMPF) 973-968-9455	
		MEDIC 222 - Ritvik Chakraborty (EMPF) 678-308-3264	
	Equipment Available on Scene:	ALS, ALS Ambulance (Transport Only)	
	Medical Emergency Channel:	Lookout Communications	
	Approved Helispot:	H-1, H-2, H-20, H-30, H-40	
DIV H	EMS Personnel:	AMBO 304 - Russell Long-Thompson (EMPF) 514-965-1183	
		MEDIC 229 - Nathan Davis (EMPF) 816-844-5859	
		MEDIC 228 - Francisco Pacheco (EMPF) 918-269-5523	
	Equipment Available on Scene:	ALS, ALS Ambulance	
Medical Emergency Channel:	Lookout Communications		
	Approved Helispot:	H-2, H-30, H-40	
DIV L	EMS Personnel:	AMBO 301 - Alexis Wasden (EMPF) 385-895-7738	
		MEDIC 226 - Steve McDowell (EMPF) 208-949-7936	
	Equipment Available on Scene:	ALS, ALS Ambulance	
	Medical Emergency Channel:	Lookout Communications	
	Approved Helispot:	H-40	
DIV P	EMS Personnel:	RAT 4 - Neil "Gus" McClelland (EMTF) 608-780-7243	
		AMBO 306 - Stephen Spigelman (EMPF) 929-248-0242	
		MEDIC 224 - Noah Metzler (EMPF) 614-843-2836	
		EMT 123 - Ian Roy (EMTF) 707-508-9620	
	Equipment Available on Scene:	ALS, ALS Ambulance	
Medical Emergency Channel:	Lookout Communications		
	Approved Helispot:	H-1, H-41	

MEDICAL PLAN (ICS 206 WF)

Controlled Unclassified Information//Basic

DIV T	EMS Personnel:	AMBO 309 - Kyle Schulz (EMPF) 720-810-1776 MEDIC 223 - Benjamin Sholl (EMPF) 757-773-4688 MEDIC 231 - Luke Eversole (EMPF) 480-326-5676 EMT 126 - Sage Lyford (EMTF) 716-220-3755 EMT 124 - Daniel Hilberg (EMTF) 951-541-3351	
	Equipment Available on Scene:	BLS, ALS, ALS Ambulance	
	Medical Emergency Channel:	Lookout Communications	
	Approved Helispot:	H-1	
EQUIPMENT GROUP	EMS Personnel:	EMT 122 - Ethan Jarrett (EMTF) 479-312-0972	
	Equipment Available on Scene:	ALS, BLS	
	Medical Emergency Channel:	Lookout Communications	
	Approved Helispot:	H-1	
Prepared By (Med Unit Leader)	Date/Time	Reviewed By (Safety Officer)	Date/Time
Ryan Herrera MEDL Mariann Turley MEDL	09/28/2023 - 2000	Duane Van Woert SOF2 Brian Weseman SOF2	09/28/2023 - 2000

MEDICAL PLAN (ICS 206 WF)

Controlled Unclassified Information//Basic

<p>FOR A NON-EMERGENCY INCIDENT, WORK THROUGH CHAIN OF COMMAND TO REPORT AND TRANSPORT INJURED PERSONNEL AS NECESSARY.</p> <p>FOR A MEDICAL EMERGENCY: IDENTIFY ON SCENE INCIDENT COMMANDER BY NAME AND POSITION AND ANNOUNCE "MEDICAL EMERGENCY" TO INITIATE RESPONSE FROM IMT COMMUNICATIONS/DISPATCH.</p>					
<p>Use the following items to communicate situation to communications/dispatch.</p>					
<p>1. CONTACT MUD LICK COMMUNICATIONS / DISPATCH (Verify correct frequency prior to starting report) <i>Ex: "Communications, Div. Alpha. Stand-by for Emergency Traffic."</i></p> <p>2. INCIDENT STATUS: Provide incident summary (including number of patients) and command structure. <i>Ex: "Communications, I have a Red priority patient, unconscious, struck by a falling tree. Requesting air ambulance to Forest Road 1 at (Lat./Long.) This will be the Trout Meadow Medical, IC is TFLD Jones. EMT Smith is providing medical care."</i></p>					
Severity of Emergency / Transport Priority	<p><input type="checkbox"/> RED / PRIORITY 1 Life or limb threatening injury or illness. Evacuation need is IMMEDIATE <i>Ex: Unconscious, difficulty breathing, bleeding severely, 2° – 3° burns more than 4 palm sizes, heat stroke, disoriented.</i></p> <p><input type="checkbox"/> YELLOW / PRIORITY 2 Serious Injury or illness. Evacuation may be DELAYED if necessary. <i>Ex: Significant trauma, unable to walk, 2° – 3° burns not more than 1-3 palm sizes.</i></p> <p><input type="checkbox"/> GREEN / PRIORITY 3 Minor Injury or illness. Non-Emergency transport <i>Ex: Sprains, strains, minor heat-related illness.</i></p>				
Nature of Injury or Illness & Mechanism of Injury			Brief Summary of Injury or Illness <i>(Ex: Unconscious, Struck by Falling Tree)</i>		
Transport Request			Air Ambulance / Short Haul/Hoist Ground Ambulance / Other		
Patient Location			Descriptive Location & Lat. / Long. (WGS84)		
Incident Name			Geographic Name + "Medical" <i>(Ex: Trout Meadow Medical)</i>		
On-Scene Incident Commander			Name of on-scene IC of Incident within an Incident <i>(Ex: TFLD Jones)</i>		
Patient Care			Name of Care Provider <i>(Ex: EMT Smith)</i>		
<p>3. INITIAL PATIENT ASSESSMENT: Complete this section for each patient as applicable (start with the most severe patient)</p>					
Patient Assessment: See IRPG PAGE 106					
Treatment:					
<p>4. TRANSPORT PLAN:</p>					
Evacuation Location (if different): (Descriptive Location (drop point, intersection, etc.) or Lat. / Long.) Patient's ETA to Evacuation Location:					
Helispot / Extraction Site Size and Hazards:					
<p>5. ADDITIONAL RESOURCES / EQUIPMENT NEEDS:</p>					
<i>Example: Paramedic/EMT, Crews, Immobilization Devices, AED, Oxygen, Trauma Bag, IV/Fluid(s), Splints, Rope rescue, Wheeled litter, HAZMAT, Extrication</i>					
<p>6. COMMUNICATIONS: Identify State Air/Ground EMS Frequencies and Hospital Contacts as applicable</p>					
Function	Channel Name/Number	Receive (RX)	Tone/NAC *	Transmit (TX)	Tone/NAC *
COMMAND					
AIR-TO-GRND					
TACTICAL					
<p>7. CONTINGENCY: Considerations: If primary options fail, what actions can be implemented in conjunction with primary evacuation method? Be thinking ahead.</p>					
<p>8. ADDITIONAL INFORMATION : Updates/Changes, etc.</p>					
<p>REMEMBER: Confirm ETAs of resources ordered. Act according to your level of training. Be Alert. Keep Calm. Think Clearly. Act Decisively.</p>					