


Intentionally blank

ORGANIZATION ASSIGNMENT LIST (ICS 203)

1. Incident Name:		2. Operational Period: DAY	
BEDROCK LOOKOUT		Date/Time From: 10/05/2023 0700 THU	Date/Time To: 10/05/2023 2000 THU
3. Incident Commander(s) and Command Staff:			
IC/UC	ALAN LAWSON	CHIEF	EVERETT ROBBINS III JAMES PAGE (T)
DEPUTY IC	NATHAN RABE	SUPPLY UNIT	DAVID RICHARDS LOIS ANDERSON (T)
SAFETY OFFICER	DUANE VAN WOERT, GARY MCBRIDE KURT KRECH, BRIAN WESEMANN	FACILITIES UNIT	JASON BAUER
INFORMATION OFFICER	DAN OMDAL, MICHELE LABODA, JOSIE WILLIAMS, JOHN FITZROY	GROUND SUPPORT UNIT	KYLE ROBBLEE
LIAISON OFFICER	PATTI QUIRK; TIMOTHY MCKERN	COMMUNICATIONS UNIT	TOM HERMAN; LEROY SISLEY BRYAN MASSEY (T)
HUMAN RESOURCES	MIKE BAINES	MEDICAL UNIT	RYAN HERRERA, MARIANN TURLEY TRINA MCCANDLESS
4. Agency/Organization Representative(s):			
Agency/Organization	Name	SECURITY UNIT	
		FOOD UNIT	GEOFFREY CROSBY
USFS AA	DARREN CROSS - MCKENZIE RIVER RANGER DISTRICT KEVIN LARKIN - DESCHUTES NATIONAL FOREST	7. Operations Section:	
		LEAD OPS	DEAN LANGE
		PLANNING OPS	STEVE NORTH
USFS AA	STEPHANEEY KERLEY - LAGRANDE RANGER DISTRICT	FIELD OPS	BRUCE MEYER JOSH RIEPE (T)
ODF AA	CHRIS CLINE		
ODF AGENCY REP	JOHN FLANNIGAN; CRAIG PETTINGER	DIVISION/GROUP	BEDROCK REPAIR LARRY (MARK) ALVARADO SHANE ORSER (LWD 10/05) (T)
BLM AA	DENNIS C. TEITZEL NORTHWEST OREGON BLM	DIVISION/GROUP	A RONALD ADAMS BRIAN BRADBURY (T)
LEAD READ	MONTE KUK	DIVISION/GROUP	L ANDREW SCHAFFRAN
LEAD DANGER TREE READ	JAMES RUDISILL	DIVISION/GROUP	T TIM LOVE
5. Planning Section:			
CHIEF	LAURIE COX	DIVISION/GROUP	EQUIPMENT GROUP SCOTT CLEAVE
RESOURCES UNIT	DONNA BERUBE DARLA SMITH	7b. Air Operations Branch:	
SITUATION UNIT	ROGER HART OLE SMITH (T)	AIR SUPPORT SUPERVISOR	JASON BROOKS CALLAN WILKINS
DOCUMENTATION UNIT	SABRINA MCCOMB	8. Finance/Administration Section:	
DEMOBILIZATION UNIT	ELIZABETH O'NEAL	CHIEF	ANNETTE PAINOVICH, LINDA ONEAL
FIRE BEHAVIOR ANALYST	FORREST OWNBEY	DEPUTY	LOUISE DAY
TRAINING SPECIALIST	NEAL COX ADAM MICONE (T)	TIME UNIT	CARI PROVENCHER
GIS SPECIALIST	TED COUILLARD; MICHAEL CIBICKI GREG DEYOE (T)	PROCUREMENT UNIT	SHELLEY KLUZ
TECHNOLOGY SUPPORT SPECIALIST	DAVE BISHOP; BILL MILLS DAVID FLORES JR (T)	COST UNIT	KRISSY MITCHELL JEANNE CHRISTENSEN (T)
INCIDENT METEOROLOGIST	MATTHEW CALLIHAN		
6. Logistics Section:			
9. Prepared By:			
Name:	DONNA BERUBE	Position/Title:	RESL
Signature:			
ICS 203	IAP Page	Date/Time:	10/04/2023 1900

Division/Group Assignment List (ICS 204 WF)
Controlled Unclassified Information//Basic

1. Incident Name:				3.			
BEDROCK LOOKOUT				Branch:		Division/Group	
2. Operational Period: DAY						BEDROCK REPAIR	
Date/Time From: 10/05/2023 0700 THU		Date/Time To: 10/05/2023 2000 THU					
4. Operations Personnel							
FIELD OPS		BRUCE MEYER JOSH RIEPE (T)					
DIVISION/GROUP SUPERVISOR		MARK ALVARADO (LWD 10/11) SHANE ORSER (LWD 10/05) (T)					
5. Resources Assigned this Period							
Strike Team / Task Force / Resource Designator		LWD	Leader	Number Persons	Drop Off PT./Time	Pick Up PT./Time	
TFLD O-749		10/05	TED PIEHL	1	LOOKOUT ICP/0700	LOOKOUT ICP/2000	
TFLD (T) O-927		10/05	ARTURO LOZANO	1	LOOKOUT ICP/0700	LOOKOUT ICP/2000	
TFLD (T) O-1018		10/11	LLOYD DON EVANS	1	LOOKOUT ICP/0700	LOOKOUT ICP/2000	
TFLD (T) O-1044		10/14	JONATHAN YOUNG	1	LOOKOUT ICP/0700	LOOKOUT ICP/2000	
HEQB O-1007		10/12	DARIN COLLINS	1	LOOKOUT ICP/0700	LOOKOUT ICP/2000	
HEQB (T) O-1011		10/11	JESSE TSCHETTER	1	LOOKOUT ICP/0700	LOOKOUT ICP/2000	
ENG4 E-1 J3 CONTRACTING (BDRK)		10/06	DAN TEGART	3	LOOKOUT ICP/0700	LOOKOUT ICP/2000	
BHOE E-498 AXSUS ENTERPRISES		10/08	CORY ROBERTS	2	LOOKOUT ICP/0700	LOOKOUT ICP/2000	
BHOE E-499 AXSUS ENTERPRISES		10/16	ASHTON HALL	2	LOOKOUT ICP/0700	LOOKOUT ICP/2000	
CHSL E-532 BFC LIMITED		10/06	FORTINO LARIOS	3	LOOKOUT ICP/0700	LOOKOUT ICP/2000	
DUMP E-496 RUSSELLS MANAGEMENT (BDRK)		10/08	AUSTIN WILEY	1	LOOKOUT ICP/0700	LOOKOUT ICP/2000	
DUMP E-497 RUSSELLS MANAGEMENT (BDRK)		10/10	KEEGAN CUNNINGHAM	1	LOOKOUT ICP/0700	LOOKOUT ICP/2000	
DUMP E-697 BRINKS LAND IMPROVEMENT		10/07	FRANCES KUPER	1	LOOKOUT ICP/0700	LOOKOUT ICP/2000	
FRNT E-656 EERA - ROSE LOGGING		10/11	JEREMY DEGROOT	2	LOOKOUT ICP/0700	LOOKOUT ICP/2000	
FRNT E-702 AXSUS ENTERPRISES -		10/10	KELLEY THORNE	2	LOOKOUT ICP/0700	LOOKOUT ICP/2000	
SOF2 O-967.11		10/10	BRIAN WESEMANN	1	LOOKOUT ICP/0700	LOOKOUT ICP/2000	
AMBO 10 E-14 (BDRK)		10/14	ANDRE MARTONI	2	LOOKOUT ICP/0700	LOOKOUT ICP/2000	
ARCH (DT) O-1046		10/13	TRISTEN GRIFFEN	1	LOOKOUT ICP/0700	LOOKOUT ICP/2000	
8. Division/Group Communication Summary							
Function	Channel	RX Frequency N/W	RX Tone/NAC	TX Frequency N/W	TX Tone/NAC	Mode	
TACTICAL	SEE COM PLAN						
COMMAND	SEE COM PLAN						
9. Prepared By (Resource Unit Leader)			Approved By (Planning Section Chief)		Date	Time	
DARLA SMITH			LAURIE COX		10/04/2023	1900	

Division/Group Assignment List (ICS 204 WF)
Controlled Unclassified Information//Basic

1. Incident Name:		3.	
BEDROCK LOOKOUT		Branch:	Division/Group
2. Operational Period: DAY			
Date/Time From: 10/05/2023 0700 THU	Date/Time To: 10/05/2023 2000 THU	BEDROCK REPAIR	

4. Operations Personnel			
FIELD OPS	BRUCE MEYER JOSH RIEPE (T)		
DIVISION/GROUP SUPERVISOR	MARK ALVARADO (LWD 10/11) SHANE ORSER (LWD 10/05) (T)		

5. Resources Assigned this Period					
Strike Team / Task Force / Resource Designator	LWD	Leader	Number Persons	Drop Off PT./Time	Pick Up PT./Time
ARCH (T) O-981 (DT)	10/10	JUSTIN MEYER	1	LOOKOUT ICP/0700	LOOKOUT ICP/2000
REAF O-818 (DT)	10/07	BRANDYN CHILD	1	LOOKOUT ICP/0700	LOOKOUT ICP/2000
REAF O-965 (DT)	10/06	ROB MICKEY	1	LOOKOUT ICP/0700	LOOKOUT ICP/2000
REAF O-997 (DT)	10/10	MARC DASHER	1	LOOKOUT ICP/0700	LOOKOUT ICP/2000
REAF O-1033	10/14	BENJAMIN CHAD HARROLD	1	LOOKOUT ICP/0700	LOOKOUT ICP/2000
REAF (DT) O-1040	10/14	AMANDA SMITH	1	LOOKOUT ICP/0700	LOOKOUT ICP/2000

6. Control Operations/Work Assignments:
Task: Continue chipping operations throughout the Division. Utilize engines to patrol fire perimeter and address smoke and areas of heat, as necessary.
Purpose: Aid in the completion of repair efforts to areas disturbed by wildfire suppression.
End State: Restore lands affected in accordance to approved repair plans.

7. Special Instructions:
DT: Denotes Danger Tree REAF

8. Division/Group Communication Summary						
Function	Channel	RX Frequency N/W	RX Tone/NAC	TX Frequency N/W	TX Tone/NAC	Mode
TACTICAL	SEE COM PLAN					
COMMAND	SEE COM PLAN					

9. Prepared By (Resource Unit Leader) DARLA SMITH	Approved By (Planning Section Chief) LAURIE COX	Date 10/04/2023	Time 1900
---	---	---------------------------	---------------------

Division/Group Assignment List (ICS 204 WF)
Controlled Unclassified Information//Basic

1. Incident Name:				3.		
BEDROCK LOOKOUT				Branch:	Division/Group A	
2. Operational Period: DAY						
Date/Time From: 10/05/2023 0700 THU		Date/Time To: 10/05/2023 2000 THU				
4. Operations Personnel						
FIELD OPS	BRUCE MEYER JOSH RIEPE (T)			AIR ATTACK SUPERVISOR	CALLAN WILKINS	
DIVISION/GROUP SUPERVISOR	RONALD ADAMS BRIAN BRADBURY (LWD 10/07) (T)					
5. Resources Assigned this Period						
Strike Team / Task Force / Resource Designator	LWD	Leader	Number Persons	Drop Off PT./Time	Pick Up PT./Time	
TFLD O-1017	10/12	BRIAN BORNONG	1	LOOKOUT ICP/0700	LOOKOUT ICP/2000	
HEQB (T) O-1008	10/14	TREVOR HOLLENBECK	1	LOOKOUT ICP/0700	LOOKOUT ICP/2000	
STEN O-951	10/08	ERNEST PRAX	1	LOOKOUT ICP/0700	LOOKOUT ICP/2000	
FELB (T) O-877	10/10	FORREST CLARK	1	LOOKOUT ICP/0700	LOOKOUT ICP/2000	
FMOD O-794 FALLER MODULE	10/06	CHRIS REED	2	LOOKOUT ICP/0700	LOOKOUT ICP/2000	
FMOD O-837 TOMS TIMBER	10/09	STEVEN JOSH	2	LOOKOUT ICP/0700	LOOKOUT ICP/2000	
FMOD O-861 WEST COAST CUTTING	10/09	BALDO MACIEL	2	LOOKOUT ICP/0700	LOOKOUT ICP/2000	
CRW2 C-102 FRANCO REFORESTATION C-2	10/08	FRANCIS FRANCO	21	LOOKOUT ICP/0700	LOOKOUT ICP/2000	
HC2 C-106 TOM FERY FARM C-1	10/10	SERAFIN GARCIA	20	LOOKOUT ICP/0700	LOOKOUT ICP/2000	
HC2 C-107 J.C.OROZCO REFORESTATION C-5	10/13	JUAN OCHOA MORA	20	LOOKOUT ICP/0700	LOOKOUT ICP/2000	
ENG6 E-662 FIRST STRIKE ENVIRONMENTAL COMPANY	10/08	SPENCER BERLIER	3	LOOKOUT ICP/0700	LOOKOUT ICP/2000	
ENG6 E-710 OREGON WOODS INC	10/17	PHILLIP AREZZI	3	LOOKOUT ICP/0700	LOOKOUT ICP/2000	
ENG6 E-711 OREGON WOODS INC	10/17	JESSICA WILCOX	3	LOOKOUT ICP/0700	LOOKOUT ICP/2000	
EXC2 E-227 DEAN INNOVATIONS (BDRK)	10/07	MARK TYDEMAN	2	LOOKOUT ICP/0700	LOOKOUT ICP/2000	
SKD1 E-671 MKS LOGISTICS	10/14	ZACH DEBBAN	2	LOOKOUT ICP/0700	LOOKOUT ICP/2000	
FORW E-343 MILLER	10/11	LOREN KELLOGG	2	LOOKOUT ICP/0700	LOOKOUT ICP/2000	
FORW E-595 MILLER TIMBER SERVICES	10/05	MICHAEL HONEYWELL	2	LOOKOUT ICP/0700	LOOKOUT ICP/2000	
LOGL E-351 MILLER	10/11	EVAN PETERSON	2	LOOKOUT ICP/0700	LOOKOUT ICP/2000	
FEL1 E-648 BFC LIMITED	10/05	SHERI ROTH	2	LOOKOUT ICP/0700	LOOKOUT ICP/2000	
8. Division/Group Communication Summary						
Function	Channel	RX Frequency N/W	RX Tone/NAC	TX Frequency N/W	TX Tone/NAC	Mode
TACTICAL	SEE COM PLAN					
COMMAND	SEE COM PLAN					
9. Prepared By (Resource Unit Leader)			Approved By (Planning Section Chief)		Date	Time
DARLA SMITH			LAURIE COX		10/04/2023	1900

Division/Group Assignment List (ICS 204 WF)
Controlled Unclassified Information//Basic

1. Incident Name:				3.		
BEDROCK LOOKOUT				Branch:	Division/Group A	
2. Operational Period: DAY						
Date/Time From: 10/05/2023 0700 THU		Date/Time To: 10/05/2023 2000 THU				
4. Operations Personnel						
FIELD OPS	BRUCE MEYER JOSH RIEPE (T)			AIR ATTACK SUPERVISOR	CALLAN WILKINS	
DIVISION/GROUP SUPERVISOR	RONALD ADAMS BRIAN BRADBURY (LWD 10/07) (T)					
5. Resources Assigned this Period						
Strike Team / Task Force / Resource Designator	LWD	Leader	Number Persons	Drop Off PT./Time	Pick Up PT./Time	
CHP1 E-335 AXSUS	10/13	MIKE FOWLER	1	LOOKOUT ICP/0700	LOOKOUT ICP/2000	
CHP1 E-536 AXSUS ENTERPRISES	10/13	DAVID BERGQUIST	2	LOOKOUT ICP/0700	LOOKOUT ICP/2000	
CHP1 E-689 PATRICK ENVIRONMENTAL	10/06	QUENTIN JOHNSON	3	LOOKOUT ICP/0700	LOOKOUT ICP/2000	
CHP2 E-692 EARTH INDUSTRIES	10/06		3	LOOKOUT ICP/0700	LOOKOUT ICP/2000	
CHP2 E-693 MP FORESTRY	10/06	RAUL MORENO	3	LOOKOUT ICP/0700	LOOKOUT ICP/2000	
CHP2 E-699 BIG BARK	10/12	MATT DERUSHA	2	LOOKOUT ICP/0700	LOOKOUT ICP/2000	
SOFR O-967.72	10/15	JEFF KERR	1	LOOKOUT ICP/0700	LOOKOUT ICP/2000	
MEDIC 222 O-676	10/14	KYLE HEATH	1	LOOKOUT ICP/0700	LOOKOUT ICP/2000	
MEDIC 229 O-789	10/05	NATHAN DAVIS	1	LOOKOUT ICP/0700	LOOKOUT ICP/2000	
AMBO E-433	10/15	AARON BLAIR	2	LOOKOUT ICP/0700	LOOKOUT ICP/2000	
REAF O-818 (DT)	10/07	BRANDYN CHILD	1	LOOKOUT ICP/0700	LOOKOUT ICP/2000	
REAF O-896	10/11	ASHLEY DI LEONARDI	1	LOOKOUT ICP/0700	LOOKOUT ICP/2000	
REAF O-905	10/04	BENJAMIN HATHAWAY	1	LOOKOUT ICP/0700	LOOKOUT ICP/2000	
REAF (T) O-1041	10/14	SAVANNAH R STEELE	1	LOOKOUT ICP/0700	LOOKOUT ICP/2000	
REAF O-1047	10/15	BRESA MARTIN	1	LOOKOUT ICP/0700	LOOKOUT ICP/2000	
REAF (T) O-1048	10/15	CAITLYN MARIE UHLENBRAUCK	1	LOOKOUT ICP/0700	LOOKOUT ICP/2000	
REAF O-1051		JUSTIN GEERTSEN	1	LOOKOUT ICP/0700	LOOKOUT ICP/2000	
REAF (T) O-1049	10/17	CODY BENTLEY	1	LOOKOUT ICP/0700	LOOKOUT ICP/2000	
REAF O-1050	10/17	MONTE KUK	1	LOOKOUT ICP/0700	LOOKOUT ICP/2000	
REAF O-1052	10/19	TOM DEMEO	1	LOOKOUT ICP/0700	LOOKOUT ICP/2000	
8. Division/Group Communication Summary						
Function	Channel	RX Frequency N/W	RX Tone/NAC	TX Frequency N/W	TX Tone/NAC	Mode
TACTICAL	SEE COM PLAN					
COMMAND	SEE COM PLAN					
9. Prepared By (Resource Unit Leader)		Approved By (Planning Section Chief)		Date	Time	
DARLA SMITH		LAURIE COX		10/04/2023	1900	

Division/Group Assignment List (ICS 204 WF)
Controlled Unclassified Information//Basic

1. Incident Name:			3.			
BEDROCK LOOKOUT			Branch:	Division/Group A		
2. Operational Period: DAY						
Date/Time From: 10/05/2023 0700 THU		Date/Time To: 10/05/2023 2000 THU				
4. Operations Personnel						
FIELD OPS	BRUCE MEYER JOSH RIEPE (T)		AIR ATTACK SUPERVISOR	CALLAN WILKINS		
DIVISION/GROUP SUPERVISOR	RONALD ADAMS BRIAN BRADBURY (LWD 10/07) (T)					
6. Control Operations/Work Assignments:						
<p><u>Task:</u> Continue repair work as appropriate. Backhaul unnecessary equipment and supplies. <u>Purpose:</u> Continue completion of repair efforts. <u>End State:</u> Minimize impacts to Hwy 126 corridor. Minimize impacts to HJ Andrews, other infrastructure, and natural resources. Suppression repair complete.</p>						
7. Special Instructions:						
Limit traffic on 1506 Rd. No traffic allowed past DP12 on the 1506 Rd. Limit traffic on the 1508 Rd. Coordinate activities with HJ Andrews Staff.						
8. Division/Group Communication Summary						
Function	Channel	RX Frequency N/W	RX Tone/NAC	TX Frequency N/W	TX Tone/NAC	Mode
TACTICAL	SEE COM PLAN					
COMMAND	SEE COM PLAN					
9. Prepared By (Resource Unit Leader)			Approved By (Planning Section Chief)		Date	Time
DARLA SMITH			LAURIE COX		10/04/2023	1900

Division/Group Assignment List (ICS 204 WF)
Controlled Unclassified Information//Basic

1. Incident Name:			3.			
BEDROCK LOOKOUT			Branch:		Division/Group	
2. Operational Period: DAY			L			
Date/Time From: 10/05/2023 0700 THU		Date/Time To: 10/05/2023 2000 THU				
4. Operations Personnel						
FIELD OPS		BRUCE MEYER JOSH RIEPE (T)		AIR ATTACK SUPERVISOR		JASON BROOKS
DIVISION/GROUP SUPERVISOR		ANDREW SCHAFFRAN				
5. Resources Assigned this Period						
Strike Team / Task Force / Resource Designator		LWD	Leader	Number Persons	Drop Off PT./Time	Pick Up PT./Time
TFLD (T) O-868		10/06	BRYAN MARKS	1	LOOKOUT ICP/0700	LOOKOUT ICP/2000
HEQB O-926 SETH GREENE		10/07	IAP_ORIGINAL_20230926_2 30327	1	LOOKOUT ICP/0700	LOOKOUT ICP/2000
CR2I C-108 WIF MIDDLE FORK		10/07	ADAM VROON	18	LOOKOUT ICP/0700	LOOKOUT ICP/2000
VROL E-471 DEAN INNOVATIONS		10/12	MICHAEL RHODEHAMEL	1	LOOKOUT ICP/0700	LOOKOUT ICP/2000
EXC2 E-541 VALLEY TIMBER		10/11	TREVOR NELSON	2	LOOKOUT ICP/0700	LOOKOUT ICP/2000
FEL1 E-100 BOULDER RIDGE		10/11	SHANE MURPHY	2	LOOKOUT ICP/0700	LOOKOUT ICP/2000
SOFR O-967.72		10/15	JEFF KERR	1	LOOKOUT ICP/0700	LOOKOUT ICP/2000
MEDIC 224 O-679.2		10/07	NOAH METZLER	1	LOOKOUT ICP/0700	LOOKOUT ICP/2000
REAF O-904		10/04	PATRICK CATALANO	1	LOOKOUT ICP/0700	LOOKOUT ICP/2000
REAF (T) O-1049		10/17	CODY BENTLEY	1	LOOKOUT ICP/0700	LOOKOUT ICP/2000
REAF O-1051		10/17	JUSTIN GEERTSEN	1	LOOKOUT ICP/0700	LOOKOUT ICP/2000
6. Control Operations/Work Assignments:						
<u>Task:</u> Repair areas disturbed by fire suppression activities in order to meet ecological goals.						
<u>Purpose:</u> Repair and restore land affected by wildfire and suppression tactics and protecting any values at risk.						
<u>End State:</u> Fire is contained and impacts to values at risk and infrastructure along HWY 126 corridor are minimized.						
7. Special Instructions:						
Contact DIVS prior to entry to reduce congestion on 1508 Rd.						
8. Division/Group Communication Summary						
Function	Channel	RX Frequency N/W	RX Tone/NAC	TX Frequency N/W	TX Tone/NAC	Mode
TACTICAL	SEE COM PLAN					
COMMAND	SEE COM PLAN					
9. Prepared By (Resource Unit Leader)			Approved By (Planning Section Chief)		Date	Time
DARLA SMITH			LAURIE COX		10/04/2023	1900

Division/Group Assignment List (ICS 204 WF)
Controlled Unclassified Information//Basic

1. Incident Name:				3.		
BEDROCK LOOKOUT				Branch:	Division/Group	
2. Operational Period: DAY						
Date/Time From: 10/05/2023 0700 THU		Date/Time To: 10/05/2023 2000 THU		T		
4. Operations Personnel						
FIELD OPS	BRUCE MEYER JOSH RIEPE (T)		AIR ATTACK SUPERVISOR	JASON BROOKS		
DIVISION/GROUP SUPERVISOR	TIM LOVE					
5. Resources Assigned this Period						
Strike Team / Task Force / Resource Designator	LWD	Leader	Number Persons	Drop Off PT./Time	Pick Up PT./Time	
TFLD O-1009	10/14	BRIAN YARROW	1	LOOKOUT ICP/0700	LOOKOUT ICP/2000	
HEQB O-1010	10/13	ZACHARY ST JOHN	1	LOOKOUT ICP/0700	LOOKOUT ICP/2000	
HEQB (T) O-874	10/11	LOGAN PARSLEY	1	LOOKOUT ICP/0700	LOOKOUT ICP/2000	
HEQB (T) O-1006	10/11	IAN INGOGLIA	1	LOOKOUT ICP/0700	LOOKOUT ICP/2000	
ENG6 E-366 AMERICAN	10/05	MATT MORRELL	3	LOOKOUT ICP/0700	LOOKOUT ICP/2000	
FEL1 E-280 BRINK BROTHERS (BDRK)	10/09	DAKOTA WELLS	2	LOOKOUT ICP/0700	LOOKOUT ICP/2000	
EXC2 E-511 EVERY LIVESTOCK	10/16	TOM GREEN	2	LOOKOUT ICP/0700	LOOKOUT ICP/2000	
EXC2 E-614 FENTER LOGGING, LLC	10/11	KOLBY ORRISON	2	LOOKOUT ICP/0700	LOOKOUT ICP/2000	
EXC2 E-681 TJS MECHANICAL CUTTING LLC	10/08	CONNER STEVENSON	1	LOOKOUT ICP/0700	LOOKOUT ICP/2000	
EXC2 E-690 J & D LOGGING & CONTRACTING	10/06	RYAN COALWELL	2	LOOKOUT ICP/0700	LOOKOUT ICP/2000	
EXC3 E-701 MADERA NORTHWEST	10/10	CHAD LINVILLE	2	LOOKOUT ICP/0700	LOOKOUT ICP/2000	
CHP1 E-538 ANVIL BUILDERS	10/15	JUSTIN BOYLE	2	LOOKOUT ICP/0700	LOOKOUT ICP/2000	
CHP1 E-542 MOUNTAIN VIEW TREE	10/18	KAI ELROD	2	LOOKOUT ICP/0700	LOOKOUT ICP/2000	
CHP1 E-555 MILLER TIMBER SERVICES	10/05	TIM JONES	2	LOOKOUT ICP/0700	LOOKOUT ICP/2000	
CHP1 E-673 WYEAST FORESTRY	10/06	ERIK NELSON	2	LOOKOUT ICP/0700	LOOKOUT ICP/2000	
CHP2 E-620 DIAMOND ROAD MAINTENANCE, INC	10/07	LAMAR MELTIN	3	LOOKOUT ICP/0700	LOOKOUT ICP/2000	
CHSL E-684 AXSUS ENTERPRISES	10/07	TODD WEST	1	LOOKOUT ICP/0700	LOOKOUT ICP/2000	
CHSL E-686 AXSUS ENTERPRISES	10/15	JAVIER NOLASCO	1	LOOKOUT ICP/0700	LOOKOUT ICP/2000	
CHSL E-700 ANVIL BUILDERS	10/09	DAYLEN JENSEN	1	LOOKOUT ICP/0700	LOOKOUT ICP/2000	
8. Division/Group Communication Summary						
Function	Channel	RX Frequency N/W	RX Tone/NAC	TX Frequency N/W	TX Tone/NAC	Mode
COMMAND	SEE COM PLAN					
TACTICAL	SEE COM PLAN					
9. Prepared By (Resource Unit Leader)		Approved By (Planning Section Chief)		Date	Time	
DARLA SMITH		LAURIE COX		10/04/2023	1900	

Division/Group Assignment List (ICS 204 WF)
Controlled Unclassified Information//Basic

1. Incident Name:				3.		
BEDROCK LOOKOUT				Branch:	Division/Group T	
2. Operational Period: DAY						
Date/Time From: 10/05/2023 0700 THU		Date/Time To: 10/05/2023 2000 THU				
4. Operations Personnel						
FIELD OPS	BRUCE MEYER JOSH RIEPE (T)		AIR ATTACK SUPERVISOR	JASON BROOKS		
DIVISION/GROUP SUPERVISOR	TIM LOVE					
5. Resources Assigned this Period						
Strike Team / Task Force / Resource Designator	LWD	Leader	Number Persons	Drop Off PT./Time	Pick Up PT./Time	
SOFR O-967.72	10/15	JEFFREY KERR	1	LOOKOUT ICP/0700	LOOKOUT ICP/2000	
MEDIC 231 O-825	10/07	LUKE EVERSOLE	1	LOOKOUT ICP/0700	LOOKOUT ICP/2000	
EMT 126 O-962	10/09	SAGE LYFORD	1	LOOKOUT ICP/0700	LOOKOUT ICP/2000	
AMBO 15 E-277	10/13	LUCY CUMMINS	2	LOOKOUT ICP/0700	LOOKOUT ICP/2000	
REAF O-818	10/07	BRANDYN CHILD	1	LOOKOUT ICP/0700	LOOKOUT ICP/2000	
REAF (T) O-1041	10/14	SAVANNAH STEELE	1	LOOKOUT ICP/0700	LOOKOUT ICP/2000	
REAF O-896	10/11	ASHLEY DI LEONARDI	1	LOOKOUT ICP/0700	LOOKOUT ICP/2000	
6. Control Operations/Work Assignments:						
<p><u>Task:</u> Utilize equipment and crews to repair dozer/handlines and backhaul of unnecessary equipment. Utilize equipment to process and haul logs to designated locations. Utilize engines to patrol and maintain existing control lines.</p> <p><u>Purpose:</u> Repair and restore land affected by wildfire suppression tactics and protecting any values at risk.</p> <p><u>End State:</u> Lands affected by suppression actions are restored in accordance with approved repair plans.</p>						
7. Special Instructions:						
8. Division/Group Communication Summary						
Function	Channel	RX Frequency N/W	RX Tone/NAC	TX Frequency N/W	TX Tone/NAC	Mode
COMMAND	SEE COM PLAN					
TACTICAL	SEE COM PLAN					
9. Prepared By (Resource Unit Leader)			Approved By (Planning Section Chief)		Date	Time
DARLA SMITH			LAURIE COX		10/04/2023	1900

Division/Group Assignment List (ICS 204 WF)
Controlled Unclassified Information//Basic

1. Incident Name:				3.		
BEDROCK LOOKOUT				Branch:	Division/Group	
2. Operational Period: DAY						
Date/Time From: 10/05/2023 0700 THU		Date/Time To: 10/05/2023 2000 THU		EQUIPMENT GROUP		
4. Operations Personnel						
FIELD OPS	BRUCE MEYER JOSH RIEPE (T)					
DIVISION/GROUP SUPERVISOR	SCOTT CLEAVE					
5. Resources Assigned this Period						
Strike Team / Task Force / Resource Designator	LWD	Leader	Number Persons	Drop Off PT./Time	Pick Up PT./Time	
TFLD O-1019	10/14	CHRIS L LEWIS	1	LOOKOUT ICP/0700	LOOKOUT ICP/2000	
HEQB (T) O-907	10/10	ERIC FRANTA	1	LOOKOUT ICP/0700	LOOKOUT ICP/2000	
LOGL E-21 J & D	10/11	LJ SANOWSKI	2	LOOKOUT ICP/0700	LOOKOUT ICP/2000	
LOGL E-22 J & D	10/15	SAWYER LOGAN	2			
LOGL E-61 MARK JONES	10/11	JAMES HILL	2	LOOKOUT ICP/0700	LOOKOUT ICP/2000	
LOGL E-352 BRINKS	10/08	JEREMY MARTIN	2	LOOKOUT ICP/0700	LOOKOUT ICP/2000	
LOGL E-354 BRINK	10/05	ZEB EARL	2	LOOKOUT ICP/0700	LOOKOUT ICP/2000	
LOGT E-355 MILLER	10/10	BRAD HALL	1	LOOKOUT ICP/0700	LOOKOUT ICP/2000	
LOGT E-358 BRINK BROTHERS INC	10/11	DYLON HILLSMAN	1	LOOKOUT ICP/0700	LOOKOUT ICP/2000	
LOGT E-472 MARK JONES	10/14	TOM DEENON	1	LOOKOUT ICP/0700	LOOKOUT ICP/2000	
LOGT E-508 BRINK BROTHERS (BDRK)	10/07	CASEY HULL	1	LOOKOUT ICP/0700	LOOKOUT ICP/2000	
LOGT E-509 MARK JONES TRUCKING (BDRK)	10/09	ANTHONY TERRA	1	LOOKOUT ICP/0700	LOOKOUT ICP/2000	
LOGT E-527 MARK JONES TRUCKING 2	10/12	TERRY LEWIS	1	LOOKOUT ICP/0700	LOOKOUT ICP/2000	
LOGT E-528 MARK JONES TRUCKING 3	10/12	CHAD BROWN	1	LOOKOUT ICP/0700	LOOKOUT ICP/2000	
LOGT E-617 EERA - DEAN INNOVATIONS	10/10	STEVE RODGERS	1	LOOKOUT ICP/0700	LOOKOUT ICP/2000	
LOGT E-703 EERA - MARK JONES TRUCKING	10/12	GREG FRANTZ	1	LOOKOUT ICP/0700	LOOKOUT ICP/2000	
LOGT E-704 EERA - MARK JONES TRUCKING	10/12	RON STROHM	1	LOOKOUT ICP/0700	LOOKOUT ICP/2000	
8. Division/Group Communication Summary						
Function	Channel	RX Frequency N/W	RX Tone/NAC	TX Frequency N/W	TX Tone/NAC	Mode
TACTICAL	SEE COM PLAN					
COMMAND	SEE COM PLAN					
9. Prepared By (Resource Unit Leader)			Approved By (Planning Section Chief)		Date	Time
DARLA SMITH			LAURIE COX		10/04/2023	1900

Division/Group Assignment List (ICS 204 WF)
Controlled Unclassified Information//Basic

1. Incident Name:			3.			
BEDROCK LOOKOUT			Branch:		Division/Group	
2. Operational Period: DAY					EQUIPMENT GROUP	
Date/Time From: 10/05/2023 0700 THU		Date/Time To: 10/05/2023 2000 THU				
4. Operations Personnel						
FIELD OPS		BRUCE MEYER JOSH RIEPE (T)				
DIVISION/GROUP SUPERVISOR		SCOTT CLEAVE				
5. Resources Assigned this Period						
Strike Team / Task Force / Resource Designator		LWD	Leader	Number Persons	Drop Off PT./Time	Pick Up PT./Time
SOF2 O-980		10/08	ERIC MESSENGER	1	LOOKOUT ICP/0700	LOOKOUT ICP/2000
O-677 MEDIC 221		10/06	DEREK JORDAN	1	LOOKOUT ICP/0700	LOOKOUT ICP/2000
O-762 MEDIC 228		10/13	KYLE KEMERER	1	LOOKOUT ICP/0700	LOOKOUT ICP/2000
6. Control Operations/Work Assignments:						
<u>Task</u> : Remove deck material to prepare lines for rehab. <u>Purpose</u> : Prepare lines for rehab. <u>End State</u> : Lines clear of deck materials.						
7. Special Instructions:						
8. Division/Group Communication Summary						
Function	Channel	RX Frequency N/W	RX Tone/NAC	TX Frequency N/W	TX Tone/NAC	Mode
TACTICAL	SEE COM PLAN					
COMMAND	SEE COM PLAN					
9. Prepared By (Resource Unit Leader)			Approved By (Planning Section Chief)		Date	Time
DARLA SMITH			LAURIE COX		10/04/2023	1900

AIR OPERATIONS SUMMARY ICS-220													
Incident Name / Number		Sunrise	Sunset	Pumpkin		Time Prepared		Date Prepared		Prepared By			
Lookout/Bedrock/Pete's Lake		0714	1846	1916		1500		10/4/23		Callan Wilkins - AOBDr			
General Remarks, Safety Notes, Hazards, Air Operations Special Equipment, etc.													
<p>*Order All Aircraft through Eugene Dispatch. 541-225-6400</p> <p>*Be aware of retardant avoidance areas. 300ft away from waterways and bodies of water.</p> <p>*Sanitize Buckets before changing water sources.</p> <p>*Clear drop area/line before initiating drop sequence.</p> <p>*Be cognizant of all overhead and environmental hazards while working with Aircraft.</p> <p>*All GPS is to be collected in DP* MM.MM'</p> <p>*Avoid power lines near Trail Bridge Dip site.</p> <p>*Aviation daily cost to: 2023.lookout.finance@firenet.com</p>													
Incident Frequencies		RX	Tone	TX	Tone	AM/FM	Position	Name	Phone	EQUIPMENT/SUPPLIES			
Eugene AIA OR 1 Primary		134.7250		134.7250		AM	AOBD	Callan Wilkins	509-899-3876				
A/G Primary (A-5)		167.0625		167.0625		FM	AOBD-T	Jason Brooks (LWD 10/5)	907-482-0738				
A/G Secondary (A-6)		169.2000		169.2000		FM	ASGS-T						
IA A/G White ODF		151.3100	156.7	151.3100	156.7	FM	HEBM						
IA A/G 50 USFS		168.2875		168.2875		FM	HMGB - 7HX	Ray Wilson	707-472-8088				
AIR GUARD		168.6250		168.6250	110.9	FM							
VMED 29 - Life Flight		155.3475		155.3475	156.7	FM							
							OR-WIF UAO	Nick White	541-520-5968				
HELICOPTERS - Creswell, Hobby Field. *assigned													
FAA #	TYPE	Make/Model	Helibase	Start	Avail	Remarks	FAA #	TYPE	Make/Model	Airport	Start	Avail	Remarks
N27HX	3	Bell 407	Sunniver	0700	0800	Recon, Bucket (A-12)	N35HX	3	AS350B3E	Sunniver	0800	0830	Short-haul
							N99WL	2	Bell 205++	Sunniver	0800	0900	Rappel, Bucket
UAS													
Call Sign	Type	Make/Model	Base	Start	Avail	Remarks	FAA #	Call Sign	Make/Model	Base	Start	Avail	Remarks
FIXED WING AAHLCO													

INCIDENT RADIO COMMUNICATIONS PLAN (ICS 205)		Incident Name		Date/Time Prepared		Operational Period Date/Time					
		Lookout		10/04/2023 1900		10/05/2023 - All Shifts					
Zn Ch	Function	Channel Name/Trunked Radio System Talkgroup	Assignment	RX Freq N or W	RX Tone/NAC	TX Freq N or W	TX Tone/NAC	Dev	Pwr A, D or M	Mode	Remarks
1	COMMAND	CMD 1	ALL BRANCHES	169.5375	156.7	164.7125	156.7	N	H	A	Located East of Fire Area
2	COMMAND	CMD 2	ALL BRANCHES	168.4750	156.7	165.4000	156.7	N	H	A	Located NW of Fire Area
3	COMMAND	CMD 3	NOT IN USE	170.2875	156.7	163.6125	156.7	N	H	A	Not In Use
4	COMMAND	CMD 4	ALL BRANCHES	171.0625	156.7	163.8250	156.7	N	H	A	Covers ICP + Hwy 126
5	COMMAND	CMD 5	NOT IN USE	170.6875	156.7	166.5750	156.7	N	H	A	Not In Use
6	TACTICAL	TAC 1	DIV A	168.0500	156.7	168.0500	156.7	N	H	A	Division Alpha & Division Charlie
7	TACTICAL	TAC 2	DIV T	168.2000	156.7	168.2000	156.7	N	H	A	Division Tango
8	TACTICAL	TAC 3	NOT IN USE	168.6000	156.7	168.6000	156.7	N	H	A	Not In Use
9	TACTICAL	TAC 4	DIV L	168.2500	156.7	168.2500	156.7	N	H	A	Division Lima
10	TACTICAL	TAC 5	NOT IN USE	166.7250	156.7	166.7250	156.7	N	H	A	Not In Use
11	TACTICAL	TAC 6	Equip Grp	166.7750	156.7	166.7750	156.7	N	H	A	Equipment Grp
12	Forest Rptr.	Frissell	ALL DIVS	172.2500	103.5	164.9125	162.2	N	H	A	To Eugene Dispatch
13	Air-to-Ground	A/G PRI	ALL DIVS	167.0625	NONE	167.0625	NONE	N	H	A	Primary AIR TO GROUND
14	Air-to-Ground	A/G SEC	ALL DIVS	169.2000	NONE	169.2000	NONE	N	H	A	SECONDARY AIR TO GROUND
15	Air-to-Ground	VMED 29	MEDEVAC	155.3475	NONE	155.3475	156.7	N	H	A	Life Flight
16	EMERGENCY	AIRGUARD	EMERGENCY	168.6250	NONE	168.6250	110.9	N	H	A	EMERGENCY USE ONLY
Prepared By (Communications Unit Leader T) <i>Bryan Newberg</i>				Incident Location:		Forest / Unit / Jurisdiction:		Latitude: " N		Longitude: W	
Lookout Communications (661) 349-1513				County: OR		State: OR					

All Lookout fire resources should use Clone 93 Lookout as of 9/3/2023. All Divisions, use Command repeater that's best in your location.

INCIDENT RADIO COMMUNICATIONS PLAN (ICS 205)		Incident Name		Date/Time Prepared		Operational Period Date/Time					
		Bedrock		10/04/2023 1900		10/05/2023 - All Shifts					
Zn Ch	Function	Channel Name/Trunked Radio System Talkgroup	Assignment	RX Freq N or W	RX Tone/NAC	TX Freq N or W	Tx Tone/NAC	Dev	Pwr A, D or M	Mode	Remarks
1	TACTICAL	TAC 1	NOT IN USE	168.2500	136.5	168.2500	136.5	N	H	A	North Repair
2	TACTICAL	TAC 2	Bedrock Repair	166.7750	136.5	166.7750	136.5	N	H	A	South Repair
3	TACTICAL	TAC 3	NOT IN USE	166.7250	136.5	166.7250	136.5	N	H	A	UNASSIGNED
4	TACTICAL	TAC 4	NOT IN USE	168.6000	136.5	168.6000	136.5	N	H	A	UNASSIGNED
5	TACTICAL	TAC 5	NOT IN USE	168.2000	136.5	168.2000	136.5	N	H	A	UNASSIGNED
6	COMMAND	CMD 6	ALL BRANCHES	170.2500	136.5	162.8125	136.5	N	H	A	ALL - COMMAND (WEST) BEAR MTN
7	COMMAND	CMD 7	NOT IN USE	170.0000	136.5	166.6750	136.5	N	H	A	Not In Use
8	COMMAND	CMD 8	ALL BRANCHES	170.4125	136.5	165.9625	136.5	N	H	A	ALL - COMMAND (EAST) INDIAN FALL CRK
9	COMMAND	CMD 9	ALL BRANCHES	173.0375	136.5	167.3250	136.5	N	H	A	ALL - COMMAND (NE) PERNOT MTN
10	COMMAND	CMD 10	ALL BRANCHES	171.0375	136.5	162.1875	136.5	N	H	A	ALL - COMMAND (SOUTH) SINKER MTN.
11	COMMAND	CMD 11	NOT IN USE	170.3125	136.5	164.6000	136.5	N	H	A	Not In Use
12	TACTICAL	TAC 12	NOT IN USE	166.6000	136.5	166.6000	136.5	N	H	A	Not In Use
13	Air-to-Ground	A/G PRI	ALL DIVS	172.4625	NONE	172.4625	NONE	N	H	A	Do Not Use/Use Lookout A/G Pri
14	Air-to-Ground	A/G SEC	ALL DIVS	172.6750	NONE	172.6750	NONE	N	H	A	Do Not Use/Use Lookout A/G Sec
15	Air-to-Ground	VMED 29	MEDEVAC	155.3475	NONE	155.3475	156.7	N	H	A	Life Flight
16	EMERGENCY	AIRGUARD	EMERGENCY	168.6250	NONE	168.6250	110.9	N	H	A	EMERGENCY USE ONLY
Prepared By (Communications Unit Leader)				Incident Location:		Forest / Unit / Jurisdiction:					
Bryan Woodbury				County:		Latitude: " N		Longitude: W			
Lookout Communications (661) 349-1513				State: OR							

All Divisions, use Command repeater that's best in your location.

INCIDENT RADIO COMMUNICATIONS PLAN (ICS 205)		Incident Name		Date/Time Prepared		Operational Period Date/Time					
INCIDENT RADIO COMMUNICATIONS PLAN (ICS 205)		FOREST IA		10/04/2023 1900		10/05/2023 - All Shifts					
Zn Ch	Function	Channel Name/Trunked Radio System Talkgroup	Assignment	RX Freq N or W	RX Tone/NAC	TX Freq N or W	TX Tone/NAC	Dev	Pwr	Mode A, D or M	Remarks
1	TACTICAL	TAC 1	TAC 1	166.6000	136.5	166.6000	136.5	N	H	A	IA TAC
2	TACTICAL	TAC 2	RED NET	151.3400	156.7	151.3400	156.7	N	H	A	ODF RED NET
3	Air-to-Ground	A/G	White NET	151.3100	156.7	151.3100	156.7	N	H	A	ODF A/G
4	TACTICAL	PROJ MDL	PROJ MDL	168.7750	103.5	168.7750	103.5	N	H	A	USFS MIDDLE FORK PROJECT
5	COMMAND	TIMBER CK	TIMBER CK	170.4625	103.5	164.8250	131.8	N	H	A	USFS TIMBER CREEK
6	COMMAND	CMD 6	ALL BRANCES	170.2500	136.5	162.8125	136.5	N	H	A	BEDROCK COMMAND (WEST) BEAR MTN
7	COMMAND	CMD 7	Not In Use	170.0000	136.5	166.6750	136.5	N	H	A	Not In Use
8	COMMAND	LOWELL	LOWELL	170.4625	103.5	164.8250	110.9	N	H	A	USFS LOWELL
9	COMMAND	CMD 9	ALL BRANCES	173.0375	136.5	167.3250	136.5	N	H	A	BEDROCK COMMAND (NO) PERNOT MTN
10	COMMAND	CMD 10	ALL BRANCES	171.0375	136.5	162.1875	136.5	N	H	A	BEDROCK COMMAND (SOUTH) SINKER MTN.
11	Air-to-Ground	A/G 50	ALL DIVS	168.2875	NONE	168.2875	NONE	N	H	A	A/G PRIMARY - LOCAL
12	Air-to-Ground	A/G 59	ALL DIVS	169.1125	NONE	169.1125	NONE	N	H	A	A/G SECONDARY - LOCAL
13	Air-to-Ground	A/G PRI	ALL DIVS	172.4625	NONE	172.4625	NONE	N	H	A	AIR TO GROUND PRIMARY - BEDROCK
14	Air-to-Ground	A/G SEC	ALL DIVS	172.6750	NONE	172.6750	NONE	N	H	A	AIR TO GROUND SECONDARY-BEDROCK
15	Air-to-Ground	VMED 29	MEDEVAC	155.3475	NONE	155.3475	156.7	N	H	A	MEDICAL EVACUATION ONLY
16	EMERGENCY	AIRGUARD	EMERGENCY	168.6250	NONE	168.6250	110.9	N	H	A	EMERGENCY USE ONLY
Prepared By (Communications Unit Leader)				Incident Location:		Forest / Unit / Jurisdiction:		Latitude: " N		Longitude: W	
Bryan Massey				County: OR		State: OR		Latitude: " N		Longitude: W	
Lookout Communications (661) 349-1513											

All Lookout fire resources should use Clone 93 as of 9/3/2023. All Divisions, use Command repeater that's best in your location.



Fire Weather Forecast

Thursday October 5, 2023



FORECAST NO: 72
PREDICTION FOR: Thursday, Oct 5, 2023
ISSUED: 2000, Oct 4, 2023
FIRE: Bedrock/Lookout/Horse Creek/Pothole
UNIT: Willamette N.F.
Incident Meteorologist: Matt Callihan

- **DISCUSSION:** Clear skies overnight has again provided a cool start to the day, but not as cool as Wednesday morning. That is due largely to winds from the east developing last night and continuing into the early morning hours. This has brought with it a warmer and drier airmass, which will allow high temperatures to soar into the low 80s and minimum humidities to drop below 30% this afternoon. The upper level ridge offshore and associated thermal trough is driving these breezy winds from the east, which will continue into early Saturday morning.

THURSDAY:

- **WEATHER:** Sunny, warmer, and breezy. High temperatures will be 5-8 degrees warmer than on Wednesday.
- **WIND (20 FT):**
 - **Valleys/Lwr Slopes:** Downslope 1-4 mph becoming upslope 2-5 mph by 1000.
 - **Ridges/Upr Slopes:** From the east-northeast 3-7 mph, increasing to 6-13 mph with gusts around 17 mph after 1500.
- **MAX TEMPERATURES:** 76-81 valleys and mid-slopes, ridges 71-75.
- **MIN RH:** 20-30%
- **INVERSION:** Light, lifting around 1000. **MID HAINES:** 5.

THURSDAY NIGHT:

- **WEATHER:** Mostly clear and breezy, with lows about 3-6 degrees warmer than Wednesday night.
- **WIND (20 FT):**
 - **Valleys/Lwr Slopes:** E 2-5 mph becoming downslope 1-4 mph.
 - **Ridges/Upr Slopes:** E 6-13 with gusts up to 18 mph.
- **MIN TEMPERATURES:** 47-51.
- **MAX RH:** 70-80%

FRIDAY:

- **WEATHER:** Sunny, warmer, and breezy. High temperatures will be 1-4 degrees warmer than on Thursday.
- **WIND (20 FT):**
 - **Valleys/Lwr Slopes:** Downslope 1-4 mph becoming upslope 2-6 mph around 0900.
 - **Ridges/Upr Slopes:** From the east 5-10 mph with gusts around 15 mph, decreasing to 2-6 mph after 1000.
- **MAX TEMPERATURES:** 78-83 valleys and mid-slopes, ridges 73-77.
- **MIN RH:** 23-33%
- **INVERSION:** Light, lifting around 1000. **MID HAINES:** 4.

Extended outlook: High pressure continues to dominate the weather pattern through Saturday as the warming and drying trend peaks. The upper level ridge and associated thermal trough will begin to break down and shift to our east late Saturday into Sunday, as an upper level trough begins to dig over the northern Pacific. This initial trough will drive into the British Columbia coast Sunday before a reinforcing upper level trough will follow shortly behind and push onshore over the northern Oregon and Washington coasts on Monday. This will provide a return to showers, cooler temperatures, and increased humidities across the fire area. Currently, higher rain chances exist on Monday, with showers tapering into Tuesday.

Sunrise: 07:15 PDT **Sunset:** 18:48 PDT

FIRE BEHAVIOR FORECAST



FORECAST NUMBER: 54	TYPE OF FIRE: Wildfire
FIRE NAME: Lookout/Bedrock/Horse Creek/Pothole/Pete's Lake	OPERATIONAL PERIOD: Thursday, 05 October 2023
DATE ISSUED: 04 October 2023	TIME ISSUED: 2000 Hours
UNIT: Willamette NF, OR-WIF	SIGNED: Forrest Ownbey /s/ Forrest Ownbey – FBAN

INPUTS

WEATHER SUMMARY: See Fire Weather Forecast for Details

Clear sunny sky leads to warm and dry, light winds. Good to excellent humidity recovery.

FUELS:

Fuels in the fire area consist of Timber Litter (TL5) and Timber Understory (TU5) and lichen in the canopy. The Willamette National Forest and area has received approximately one inch of precipitation at the end of September. Live fuel moisture levels are good and resistant to contributing to fire spread. ERC's are well below the 90th percentile.

OUTPUTS

FIRE BEHAVIOR GENERAL:

Gravity and steep terrain creates potential for rolling material, fuel moisture content is high and do not create a receptive fuel. Primary fire activity will be smoldering in duff, stumpholes and under dense canopy cover.

- Grass – FM 2 (Timber grass / understory)
 - Rate of Spread – 22 to 26 feet per minute possible with flame lengths up to 6 foot.
- Brush – FM 5 (Shrub fuel type)
 - Rate of Spread – 10 to 13 feet per minute possible with flame lengths up to 4 feet.
- Timber – TU5 & TL5 (Timber Understory, Timber Litter)
 - Rate of Spread – 4 to 8 feet per minute possible with flame lengths up to 7 feet.



PIG S/U 40/60% Spotting Distance .1 miles Torching Not Likely Uphill Crown Not Likely

Fire behavior predictions are for the hottest and driest period of the day, gusts could increase fire behavior rates.

FIRE BEHAVIOR SPECIFIC:

Petes Lake & Lookout Fire: Heavy fuels moistures have increased and likely to remain high, drying will make fine fuel, needle cast available. Expect to see smoldering of stumpholes, duff and heavy fuels.

Bedrock, Pothole and Horse Creek Fire: Fine fuels will be the first to recover from recent precipitation monitor your area for needle cast and possible creeping. Smoldering of protected fuels will be the excitement for fire activity.

IA: Sun and exposed areas will make fine fuels available and increase rates of spread, intensity should have flame lengths that direct attack should be effective.

AIR OPERATIONS:

Early fog may limit some areas but clear sky throughout the day should be good flying day.

SAFETY

Maintain good situational awareness, as the finish is approaching keep alert and monitor your surroundings. Re-burn potential, slick ash, stumpholes, rolling material and weakened trees are some hazards you might have a close encounter with.



Resource Advisor Message - Lookout and Bedrock Fires

Monte Kuk, Lead READ, 458-239-4080, monte.kuks@usda.gov; James Rudisill, Danger Tree Lead READ, 541-505-4773 Thomas.Rudisill@usda.gov

With rain coming take a look at the pumps and any fuel storage. Please ensure containment trays are empty, with fresh pads. Use visqueen, p-cord to make a tent over the pump and fuel where possible. Driving around please look for plugged culvert and ditches, and make sure water can flow even if you can't do a full repair.

Engineering and Roads

- Do not track heavy equipment on paved roads without the proper mitigations (ie. street grousers, rubber mats, etc.).
- If any road issues or concerns are encountered, please contact a REAF.

Dozer Lines

- Please work with Resource Advisors to clear proposed dozer lines.
- Please minimize the depth of the dozer line to the least extent required to meet objectives. Deep cuts are expensive, time consuming, and difficult to repair.

Heritage & Cultural

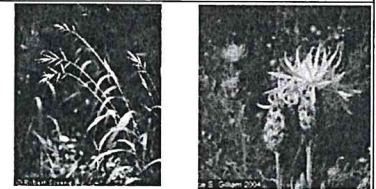
All cultural resources and human remains are protected by law. **Leave them in place- no collecting.** Call Resource Advisor if cultural resource like arrowheads, flakes/chips, or historic artifacts like cans & bottles are found and they will investigate.

Noxious Weeds

WEED WASH STATION:

- The Weed Wash stations are operational and located at Lookout Staging (Rock Quarry) and Lookout ICP
- Please use the weed wash upon arrival at the incident, and during demob
- Avoid the following weed: Slender False Brome and Spotted Knapweed

REDUCE THE SPREAD: Brush off packs & boots (especially laces) before leaving fire camp.



Tree Felling Operations

Please keep equipment on road surface to the greatest extent possible

Log Processing:

- Utilize existing openings and landings for decking, ditch lines/roadside is acceptable
- Process trees down to a 6" top (small end diameter). Use remaining for firewood logs, rehab, or chip
- Preferred Log Lengths (maximize length whenever possible): 41 foot Max – 17 foot Min
- 2' increments below 41', keeping logs as long as possible (41', 39', 37', etc....) Process unburnt trees on the unburnt side of the fireline. Process burnt trees on the burnt side of the fireline.
- Keep processed slash and tops out of decks and off roads
- If possible, sort decks by species and log lengths

Snags and Hazard Trees:

Old growth is a key value. Limit snagging to operational needs & limit bucking to retain long bowls of large felled trees or snags.

Water Quality and Fisheries

AERIAL DIPPING:

- Aerial dipping should only occur at approved dip sites. Blue River Res. has a use restriction to facilitate dipping. Check with your REAF for approval of dipping sites.
- Be sure to wash buckets when new aerial resources arrive at the fire, when switching dips sites, or when returning to the fire from off forest.

WATER DRAFTING:

- Limited Drafting is available at the bridge across Lookout Creek on the 1506 road in section 28. Check with the REAF for additional drafting locations as needed.
- Utilize fish screens when in fish bearing waterbodies (REAFs have these available).
- Maintain sufficient flow as to not dewater downstream reaches
- Utilize splash pans and absorbent pads. REAFs will assist if given the location.

CHIPPING STANDARDS:

- Provide a 30- foot buffer of no chipping at water crossings or culverts.
- Do not place chips into road ditch.
- Do not chip onto a steep slope where chips will slide back into the ditch.
- Broadcast chipped material, ensuring that chips are no more than 4" deep.



SAFETY MESSAGE

October 5, 2023

Situational Awareness: Traffic

TRAFFIC

Driving remains one of the most dangerous things we do on fires. Stay aware, take your time to get up and back from the fire. In addition, a reminder of additional road watch out situations for this incident:

- Practice “Defensive Driving” techniques traveling on all roads.
- Beware of public traffic on the roads and your surroundings.
- Use spotters and scout out your path
- Watch out for animals on the roads.
- Slow down take an extra minute to arrive safely.

Covid 19 is still part of our society and we need to continue to practice good hygiene to prevent the spread of this disease on this fire.

- Wash your hands often especially before meals.
- Use hand sanitizer if washing is unavailable.
- If you are feeling ill see the med unit leader

Safety Officers: Van Woert, McBride, Wesemann, Krech

IAP Component Deliberate Risk Assessment Hazard Summary October 5, 2023	
Hazard	Mitigation
Driving/road conditions	<ul style="list-style-type: none"> • Reduce windshield time (2:1 work ratio) • Signing of all incident roads that provide access to divisions • Daily updated travel plan maps • Practice defensive driving. In local communities obey the posted speed limits
Overhead hazards Aviation Powerlines	<ul style="list-style-type: none"> • Select tactics that minimize firefighter exposure • Review IRPG pgs. 61-79, when working near air operations • Identify hazardous trees and snags, fell as appropriate • Review IRPG pgs. 22-23, when working near powerlines
Personal Health/Wellness	<ul style="list-style-type: none"> • Wash hands/ hand sanitizer • Remove dirty Nomex shirts prior to entering chow lines • Mask will be available if needed (camp crud, covid, flu)
Repair/ backhaul	<ul style="list-style-type: none"> • Identify and communicate hazards and manage appropriately, including hazard trees • Drive carefully on forest roads and when transiting Hwy. 126 • Know the location of the nearest medical resources • Use 4X4 or UTV's to shuttle supplies to areas where stake side and van trucks can stay on hardened roads
Public Interaction	<ul style="list-style-type: none"> • Be considerate of the public! We want to interact with the public, answer questions
Communications	<ul style="list-style-type: none"> • Human repeaters • Change batteries often
Mental Health	<ul style="list-style-type: none"> • Critical Incident Stress Management • Human Resource contacts available for all resources
Gravity Hazards	<ul style="list-style-type: none"> • Post lookouts • Situational awareness of rolling materials. (Rocks, tree's) • Situational awareness of falling green/ snag tree's
Heavy Equipment	<ul style="list-style-type: none"> • Blind zone (Operator) • Rolling material (rocks, tree's, stumps) • Flying debris • Tree strikes
IA	<ul style="list-style-type: none"> • Follow protocols and communications links established with NW10 • IA resources designated in IAP, use closest forces and leadership assigned to supervise IA forces during a response • IA resources must be familiar with IA comms channel group

Team 10 Line Supply Order

Date & Time
 Order Placed

Deliver To Location/Time
 (Division, Drop Point, Hell Spot, Lat/Long)

Delivery Method
 (Driver, Helo, DWS to P/U)

Order #

TEAM 10
 HOSE LAY KIT One Mile Kit

Order received in Communications (name & time)
 Order received in Supply by (name & time)
 Order received in Transportation by (name & time)

Item	Amount
1 1/2 in. synthetic hose	5300 ft
1 in. synthetic hose	2700 ft
1 1/2 in. gated wye	27
1 1/2 in. - 1 in. reducers	27
Twin Tip Forester Nozzles	27

Order received in Helibase by (name & time)
 Order shipped to line by (name & time)

Item	Amount
3/4 in. garden hose	2700 ft
3/4 in. gated wyes	27
3/4 in. Nozzle	27
3/4 in. valve, shutoff, ball	27
1 in. - 3/4 in. reducer	27

Special Instructions/line length/ elevation

Item	Amount
Toy Hose Compliment Kit	
3/4 in. garden hose	2700 ft
3/4 in. gated wyes	27
3/4 in. Nozzle	27
3/4 in. valve, shutoff, ball	27
1 in. - 3/4 in. reducer	27

#	Item	Amount	#	Item	Amount
1	Porta-Tank 1000 gal #0661		33	Drip Torch #0241 (EMPTY)	
2	Pumpkin 3000 gal. #0568		34	Fusee #0105	
3	Backpack Pump/Bladder Bag #1149		35	Meals #1842 (MRE 12/Cs)	
4	Mark III pump + Kit #0148		36	Water 5 gal cubies	
5	Lightweight Pump #0670		37	Gatorade 24/Cs	
6	Volume Pump #1222		38	Batteries, AA #0030 (24/pg)	
7	Hose 1 1/2" #1239 (100')		39	Batteries, AAA #7471 (24/pg)	
8	Hose 1" #1238 (100')		40	Sleeping Pad #1566	
9	Hose 3/4" #1016 (50')		41	Sleeping Bag #1062	
10	Reducer 1 1/2" to 1" #0010		42	Fly Tent #0960	
11	Reducer 1" to 3/4" #0733		43	Plastic Sheeting #0144	
12	Gated "y" 1 1/2" #0231		44	Parachute Cord #0353	
13	Gated "y" 1" #0259		45	Fiber Tape #0222	
14	Gated "y" 3/4" #0904		46	Garbage Bags #0021	
15	In-line Tee 1 1/2" to 1" #0230		47	Leadline 3000 lbs #0528	
16	Nozzle KK 1 1/2" #1082		48	Cargo Net 3000 lb #0531	
17	Nozzle KK 1" #1081		49	Swivel 3000 lb #0526	
18	Nozzle 3/4" #0627		50	Foam 5 gal #1145	
19	Nozzle, Forester 1" #1081		51	Toilet Paper #0142	
20	Mop-up Kit #0772		52	Bath in a Bag, Small #0206	
21	Team 10 Hose Lay Kit		53	Bath in a Bag, Large #0712	
22	Sprinkler kit #1048 (4 head)		54	Coffee Kit #0480	
23	Gas Unleaded/5 gal		55	Coffee 3lb Can	
24	2 Cycle Oil #0341 (quart)		56	Slingable Bag (Poc.) #0425	
25	2 Cycle Oil #3444 (1 gal mix)		57	Slingable Bag (Sup.) #0426	
26	Diesel (5 gal)		58		
27	Bar Oil #1869 (gallon)		59		
28	Shovel #0171		60		
29	Pulaski #0146		61		
30	McLeod #0296		62		
31	Combi #1180		63		
32	Chainsaw Kit #0340		64		

Item	Amount
Sprinkler Kit NFES # 1048	
Sprinkler head w/couplings	4
3/4 in. garden hose	250 ft
1 1/2 x 1 1/2 x 1 in. Tee	4
1 x 3/4 reducer	4
1 1/2 in. - 1 in. reducers	1
3/4 in. gated wyes	2
3/4 in. valve, shutoff, ball	4
3/4 in. Nozzle	1
1 in. nozzle, pastic 60 gpm	1
10 in. adjustable wrench	1

NOTE: 3 kits to 1 mark III pump, depending on slope

LINE ORDER PROCESS

All line orders will go through the Comm. Unit, preferably via radio

BEFORE YOU GO TO Finance & DEMOB Check and Follow the schedule



Go through Weed Wash and Inspection



Return Supplies



Return Radios



**At Scheduled time.....
Finish your Finances**

Go to DEMOB Desk to Finalize your Demob process.

**Questions Regarding your DEMOB Call
360-259-9120**



DEMOB

LOOKOUT US-OR-WIF-230327

10/05/2023

EQUIPMENT

E-173	0700	(AMB2)	CASCADE MEDICAL
E-617	0700	(LOGT)	EERA - DEAN INNOVATIONS
E-674	0700	(EXC1)	ZEB'S TREE SERVICE
E-340	0720	(STK2)	M&M
E-677	0800	(LOGT)	EERA - MARK JONES TRUCKING
E-241	0900	(LOGL)	NORTHWEST
E-705	0900	(LOGT)	EERA - MARK JONES TRUCKING - 43885
E-706	0900	(LOGT)	EERA - MARK JONES TRUCKING - 37610
E-297	0920	(DZR2)	COUGAR RIDGE
E-675	0920	(LOGL)	EERA - BRINK BROTHERS
E-646	0940	(LOGT)	EERA - WILDKAT TRUCKING LLC -
E-366	1400	(ENG6)	AMERICAN FIRE COMPANY
E-8	1800	(WEED)	VETERAN RESPONSE

OVERHEAD

O-869	0700	(HEQB)	BACA, MATTHEW BRIAN
O-892	0700	(FACL)	FRAZIER II, LARRY BLISS
O-903	0700	(RADO)	PETERSON, STEVEN
O-763	0700	(EMTF)	ROY, IAN
O-873	0715	(HEQB)	LESLIE, KODI
O-55	0800	(MESU)	BEYOND THE EDGE (REMS1)

BEDROCK US-OR-WIF-230266

EQUIPMENT

E-509	0740	(LOGT)	MARK JONES TRUCKING (BDRK)
E-512	0920	(LOGL)	BRINK BROTHERS (BDRK)
E-542	0920	(TUBG)	BRINK BROTHERS

HUMAN RESOURCE MESSAGE



**“What do you mean I’m out of money?!!
I still have checks left!!!”**

Think of relationships like a bank account. Deposits are words that complement, support, cheer, encourage, build up, and inspire. Deposits are also acts of kindness, thoughtfulness, and trustworthiness.

Withdrawals are words or acts that are considered hurtful or unkind by the other person. Anytime you marginalize, that is, make someone feel less important than they feel they deserve, you are making a withdrawal in that relationship.

Withdrawals happen. Sometimes justified, but often not. It takes a minimum of five deposits to make up for one withdrawal.

If there is any way I can assist you, please don’t hesitate to contact me. Except in actually making those deposits. You must do that yourself!

**Your Human Resource Specialist,
Mike Baines 724-678-6147**

Training Message

ARE YOU ORDERED AS A TRAINEE?

If you are ordered as a trainee, please sign up for the incident trainee program. Please register with the incident training specialist by filling out the questionnaire from the QR code in the IAP, please email scans or pictures of your incident qualification card and front cover of your task book to adam.micone1@outlook.com.

During your time on this incident ensure you work with your trainer to complete the tasks you need evaluated if possible. Ensure your trainer evaluates your position task book tasks that you can complete, and they complete your position task book evaluation page as well as a performance evaluation (ICS-225). I have a training folder within the QR Code with both a position task book evaluation record and a performance evaluation for your trainer to use if needed. Upon completion of your assignment (***please complete a couple days early to speed up demob***), please email, scans or pictures of your position task book evaluation and performance evaluation (ICS-225) to adam.micone1@outlook.com. These will be checked for accuracy, logged in the system, and sent on to your home unit training contact through email. Adam is working remotely. Please contact me if you have any further questions, please reach out to adam.micone1@outlook.com or 509-589-1387, we look forward to serving you.

Have a great Day!

Adam Micone

NW Team 10 Incident Training Specialist (t)



FIRE INFORMATION

Phone: 541-215-6735

Email: 2023.lookout@firenet.gov



EMAIL

Inciweb (Lookout): inciweb.wildfire.gov/
incident-information/orwif-lookout-fire

Inciweb (Bedrock): inciweb.wildfire.gov/
incident-information/orwif-bedrock-fire

Inciweb (Petes Lake): inciweb.wildfire.gov/
incident-information/orwif-petes-lake-fire

Facebook (Lookout): facebook.com/LookoutFire2023

Facebook (Bedrock): facebook.com/BedrockFire2023

Facebook (Petes Lake): facebook.com/Petes Lake Fire Info

Facebook (NW Team 10): facebook.com/NorthwestTeam10

Help us tell the story of this fire with pictures
and short videos (30 seconds or less)

SHARE YOUR PHOTOS OR VIDEO

Catch us during the morning briefing or
send to the PIO team via email to

2023.peteslake@firenet.gov

Please provide your name for photo credit and
include basic info about where the photo was
taken and what's happening in it.

LOST AND FOUND

Information Trailer at the ICP

(38656 Kickbush Lane, Springfield, OR 97478)

PACKAGES

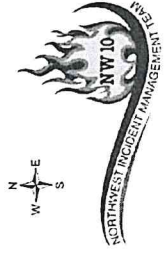
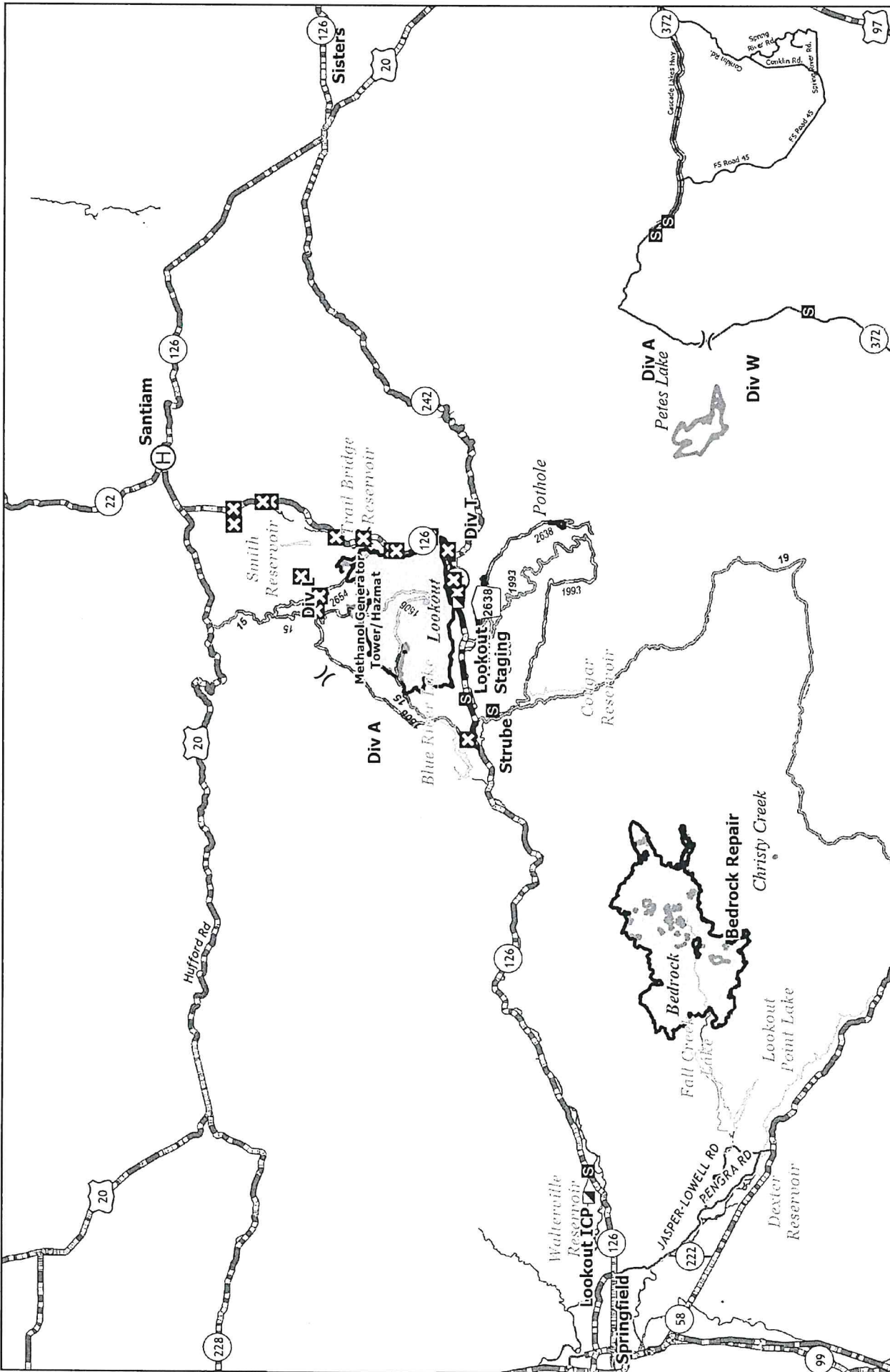
Your Name, Your Position, Contact Phone Number
Lookout Fire

Walterville Post Office - General Delivery

39333 McKenzie Hwy

Walterville, OR 97489





Lookout ICP : 38601 Camp Creek Road, Waltherville, OR 97489
 (14.5 Miles from Eugene, 19 min) - Weed Wash Station
Lookout Staging: 54547 McKenzie Hwy, Blue River, OR 97413 - Weed Wash Station
Hoodoo FOB: 27400 Big Lake Rd., Sisters, OR 97759 - Weed Wash Station
Wanoga Spike: 15523 Cascade Lakes Hwy, La Pine, OR 97739

- ⊗ Airstrip or Airport
- ⊕ Helibase
- ⌘ Division Break
- ⊠ Incident Command Post
- ⊠ Closure
- ⊠ Staging Area
- ⊠ Fire Area

Transportation
 Bedrock - ORWIF-230266
 Lookout - ORWIF-230327
 Petes Lake - ORWIF-230409
 10/5/2023



ACTIVITY LOG (ICS 214)

1. Incident Name:		2. Operational Period: Date From: _____ Date To: _____ Time From: _____ Time To: _____	
3. Name:	4. ICS Position:	5. Home Agency (and Unit):	
6. Resources Assigned:			
Name	ICS Position	Home Agency (and Unit)	
7. Activity Log:			
Date/Time	Notable Activities		
8. Prepared by: Name: _____		Position/Title: _____ Signature: _____	
ICS 214, Page 1	Date/Time: _____		

Incident/Project Name		Operational Period						
LOOKOUT/BEDROCK		Date/Time:	10/05 - 10/06 0700-0700					
Ambulance Services								
Name	Complete Address	Phone & EMS Frequency		Advanced Life Support (ALS)		Yes	No	
AMBO 308 (Lookout Transport)	Blue River Reservoir	Command Channel		X				
Bend Fire Department	1212 SW Simpson Ave, Bend, OR 97702	911 / 541-693-6911		X				
Sister-Camp Sherman R.F.P.D	301 South Elm Street Sisters, OR			X				
Eugene/Springfield Fire (Lookout Transport)	1705 W. 2 nd Ave Eugene, OR	Lane County 911		X				
Air Ambulance Services								
Name	Phone	Type of Aircraft & Capability						
Life Flight – Eugene or Redmond	Order through Lookout Comms 800-232-0911	Critical Care Team of Paramedics and RN NVG, Freq: VMED 29						
Airlink - Bend	Order through Lookout Comms 800-353-0497	Critical Care Team of Paramedics and RN NVG, Freq: VMED 29						
Wenatchee Helitack Short Haul	Ordered by Lookout Comms	ALS, Short Haul, not-dedicated to the incident – Daytime use only						
Hospitals								
Name Complete Address	GPS Datum – WGS 84 Coordinate Standard Degrees Decimal Minutes		Travel Time Air Gnd		Phone	Helipad Yes No		Level of Care Facility
	Lat:	Long:						
PeaccHealth Sacred Heart Medical Center 333 Riverbend Drive Springfield, OR 97477	44° 04.876' N	123° 01.588' W	10 min	20 min	541-222-6931	X		Level 2 Trauma
	OG64							
St Charles Bend 2500 NW Neff Rd Bend, OR 97701	44° 04.102' N	121° 16.054' W	45 mins	2 hours 20 min	541-382-4321	X		Level 2 Trauma
	54OR							
Legacy Emanuel Hospital 3001 N Gantenbein Ave Portland, OR 97227	45° 32.668' N	122° 40.293' W	45 mins	2 hours	(406) 329-5635	X		Level 1 Trauma Burn Center
	7OR5							
OHSU Hospital 3181 SW Sam Jackson Park Rd, Portland, OR 97239	45° 29.950' N	112° 41.110' W	45 mins	2 hours	ER (503) 494-7550	X		Level 1 Trauma
	9OR6							

MEDICAL PLAN (ICS 206 WF)

Controlled Unclassified Information//Basic

Division Branch Group	Area Location Capability		
ICP	EMS Personnel:	Ryan Herrera MEDL 253-297-0537 Mariann Turley MEDL 509-496-9370 Trina McCandless MEDL 907-305-0979 AMBO 301 - Alexis Wasden (EMPF) 385-895-7738	
	Equipment Available on Scene:	ALS Ambulance, Medical Yurt w/ OTC Meds	
	Medical Emergency Channel:	Lookout Communications	
	Approved Helispot:	N/A	
BEDROCK REPAIR	EMS Personnel:	AMBO 10 - Andre Martoni (EMPF) 612-707-8496	
	Equipment Available on Scene:	ALS Ambulance	
	Medical Emergency Channel:	Bedrock Communications	
	Approved Helispot:	H-2, H-5, H-10, H-32, Cascara Camp	
DIV A	EMS Personnel:	AMBO 308 - Aaron Blair (EMPF) 480-580-6931 MEDIC 229 - Nathan Davis (EMPF) 816-844-5859 MEDIC 222 - Kyle Heath (EMPF) 586-879-8796	
	Equipment Available on Scene:	ALS, ALS Ambulance (Transport Only)	
	Medical Emergency Channel:	Lookout Communications	
	Approved Helispot:	H-1, H-2, H-20, H-30, H-40	
DIV L	EMS Personnel:	MEDIC 224 - Noah Metzler (EMPF) 614-843-2836	
	Equipment Available on Scene:	ALS	
	Medical Emergency Channel:	Lookout Communications	
	Approved Helispot:	H-1, H-40, H-41	
DIV T	EMS Personnel:	AMBO 15 - Lucy Cummins (EMPF) 567-274-8888 MEDIC 231 - Luke Eversole (EMPF) 480-326-5676 EMT 126 - Sage Lyford (EMTF) 716-220-3755	
	Equipment Available on Scene:	BLS, ALS Ambulance	
	Medical Emergency Channel:	Lookout Communications	
	Approved Helispot:	H-1	
EQUIPMENT GROUP	EMS Personnel:	MEDIC 228 - Kyle Kemerer (EMPF) 650-868-2803 MEDIC 221- Derek Jordan (EMPF) 803-727-7096	
	Equipment Available on Scene:	ALS	
	Medical Emergency Channel:	Lookout Communications	
	Approved Helispot:	H-1	
Prepared By (Med Unit Leader)	Date/Time	Reviewed By (Safety Officer)	Date/Time
Ryan Herrera MEDL Mariann Turley MEDL	10/04/2023 - 2000	Duane Van Woert SOF2 Brian Weseman SOF2	10/04/2023 - 2000




MEDICAL PLAN (ICS 206 WF)

Controlled Unclassified Information//Basic

<p>FOR A NON-EMERGENCY INCIDENT, WORK THROUGH CHAIN OF COMMAND TO REPORT AND TRANSPORT INJURED PERSONNEL AS NECESSARY.</p> <p>FOR A MEDICAL EMERGENCY: IDENTIFY ON SCENE INCIDENT COMMANDER BY NAME AND POSITION AND ANNOUNCE "MEDICAL EMERGENCY" TO INITIATE RESPONSE FROM IMT COMMUNICATIONS/DISPATCH.</p>					
<p>Use the following items to communicate situation to communications/dispatch.</p>					
<p>1. CONTACT MUD LICK COMMUNICATIONS / DISPATCH (Verify correct frequency prior to starting report) <i>Ex: "Communications, Div. Alpha. Stand-by for Emergency Traffic."</i></p> <p>2. INCIDENT STATUS: Provide incident summary (including number of patients) and command structure. <i>Ex: "Communications, I have a Red priority patient, unconscious, struck by a falling tree. Requesting air ambulance to Forest Road 1 at (Lat./Long.) This will be the Trout Meadow Medical, IC is TFLD Jones. EMT Smith is providing medical care."</i></p>					
Severity of Emergency / Transport Priority	<p><input type="checkbox"/> RED / PRIORITY 1 Life or limb threatening injury or illness. Evacuation need is IMMEDIATE <i>Ex: Unconscious, difficulty breathing, bleeding severely, 2° – 3° burns more than 4 palm sizes, heat stroke, disoriented.</i></p> <p><input type="checkbox"/> YELLOW / PRIORITY 2 Serious Injury or illness. Evacuation may be DELAYED if necessary. <i>Ex: Significant trauma, unable to walk, 2° – 3° burns not more than 1-3 palm sizes.</i></p> <p><input type="checkbox"/> GREEN / PRIORITY 3 Minor Injury or illness. Non-Emergency transport <i>Ex: Sprains, strains, minor heat-related illness.</i></p>				
Nature of Injury or Illness & Mechanism of Injury			<p><i>Brief Summary of Injury or Illness (Ex: Unconscious, Struck by Falling Tree)</i></p>		
Transport Request			<p><i>Air Ambulance / Short Haul/Hoist Ground Ambulance / Other</i></p>		
Patient Location			<p><i>Descriptive Location & Lat. / Long. (WGS84)</i></p>		
Incident Name			<p><i>Geographic Name + "Medical" (Ex: Trout Meadow Medical)</i></p>		
On-Scene Incident Commander			<p><i>Name of on-scene IC of Incident within an Incident (Ex: TFLD Jones)</i></p>		
Patient Care			<p><i>Name of Care Provider (Ex: EMT Smith)</i></p>		
<p>3. INITIAL PATIENT ASSESSMENT: Complete this section for each patient as applicable (start with the most severe patient)</p>					
<p>Patient Assessment: See IRPG PAGE 106</p>					
<p>Treatment:</p>					
<p>4. TRANSPORT PLAN:</p>					
<p>Evacuation Location (if different): (Descriptive Location (drop point, intersection, etc.) or Lat. / Long.) Patient's ETA to Evacuation Location:</p>					
<p>Helispot / Extraction Site Size and Hazards:</p>					
<p>5. ADDITIONAL RESOURCES / EQUIPMENT NEEDS:</p>					
<p><i>Example: Paramedic/EMT, Crews, Immobilization Devices, AED, Oxygen, Trauma Bag, IV/Fluid(s), Splints, Rope rescue, Wheeled litter, HAZMAT, Extrication</i></p>					
<p>6. COMMUNICATIONS: Identify State Air/Ground EMS Frequencies and Hospital Contacts as applicable</p>					
Function	Channel Name/Number	Receive (RX)	Tone/NAC *	Transmit (TX)	Tone/NAC *
COMMAND					
AIR-TO-GRND					
TACTICAL					
<p>7. CONTINGENCY: Considerations: If primary options fail, what actions can be implemented in conjunction with primary evacuation method? Be thinking ahead.</p>					
<p>8. ADDITIONAL INFORMATION : Updates/Changes, etc.</p>					
<p>REMEMBER: Confirm ETAs of resources ordered. Act according to your level of training. Be Alert. Keep Calm. Think Clearly. Act Decisively.</p>					