




ICS Form 202 INCIDENT OBJECTIVES	1. INCIDENT NAME Bedrock / Lookout / Pothole / Horse Creek / Pete's Lake	2. DATE 10/08/23	3. TIME 1900									
4. OPERATIONAL PERIOD (DATE/TIME) 10/09/2023 0700 – 2000												
5. GENERAL CONTROL OBJECTIVES FOR THE INCIDENT (INCLUDE ALTERNATIVES) Leaders Intent <ol style="list-style-type: none"> Human Life is the most important value to be protected. There is no higher value than that of our responders and the public. Utilize deliberate risk assessment and Incident Strategic Alignment Process to ensure hazards are identified and response is commensurate with values at risk. Limit impacts to communities at risk. Monitor fire behavior, smoke impacts and fire growth; respond as needed to protect life, property, infrastructure, improvements, recreation, cultural, natural resources, and other identified values at risk. Apply methods and implement suppression and repair strategies appropriate to the values at risk, and where they will have the highest probability of success. Suppression and repair activities will be coordinated with resource advisor and in accordance with approved suppression repair plan. Ensure the timely and accurate dissemination of information and maintain positive relationships with cooperating agencies and local landowners; along with identified elected state and local officials, business leaders and media contacts. Manage incident and assigned resources cost effectively, commensurate with the direction of the Agency Administrators and values to be protected. Manage human resources assigned to the incident in a manner that promotes a positive harassment free work environment, ensure all are treated with dignity and respect. There will be zero tolerance for drug and alcohol use or possession for those assigned to this incident. Management Objectives <ul style="list-style-type: none"> Consider, communicate and plan for the safety and wellbeing of assigned personnel, resources and the public, prior to engaging in any and all incident related activities. Emphasize safety in all that we do. Engage and limit the negative effects of fire suppression activities to natural resources. Suppression repair plan identifies specific actions needed to stabilize the adverse effects in these fire areas. Work with BAER Team to support access and completion of burned area assessment. Work with Willamette National Forest Timber READ to facilitate danger tree removal to reduce roadside hazards. Protect communities at risk, private properties, industrial timber, family forests, recreational areas, wildlife, cultural and natural resources, Eugene Water and Electric Board Dam, H.J. Andrews Experimental Forest, Hwy 126 and other identified values at risk. Continue to monitor fire behavior, activity and growth and react accordingly. Respond to new starts as requested by host agencies. Utilize Turn-back Standards document to provide clear direction as to the desired conditions and the requirements for transfer of command for the Bedrock, Lookout, Horse Creek, Pothole, and Pete's Lake Fires back to host unit or to another Incident Management Team. 												
6. WEATHER FORECAST FOR OPERATIONAL PERIOD See Attached.		7. GENERAL SAFETY MESSAGE See Attached.										
8. ATTACHMENTS <table border="0" style="width:100%"> <tr> <td>Organization List (ICS 203)</td> <td>Medical Plan (ICS 206)</td> <td>Safety Message</td> </tr> <tr> <td>Weather Forecast</td> <td>Communications Plan (ICS 205)</td> <td>Assignments (ICS 204)</td> </tr> <tr> <td>Fire Behavior Forecast</td> <td>ICS 214</td> <td>Air Operations Summary (ICS 220)</td> </tr> </table>				Organization List (ICS 203)	Medical Plan (ICS 206)	Safety Message	Weather Forecast	Communications Plan (ICS 205)	Assignments (ICS 204)	Fire Behavior Forecast	ICS 214	Air Operations Summary (ICS 220)
Organization List (ICS 203)	Medical Plan (ICS 206)	Safety Message										
Weather Forecast	Communications Plan (ICS 205)	Assignments (ICS 204)										
Fire Behavior Forecast	ICS 214	Air Operations Summary (ICS 220)										
9. PREPARED BY Laurie Cox – PSC2 		10. APPROVED BY (Incident Commander) Alan Lawson 										

ORGANIZATION ASSIGNMENT LIST (ICS 203)




1. Incident Name:		2. Operational Period: DAY	
BEDROCK LOOKOUT		Date/Time From: 10/09/2023 0700 MON	Date/Time To: 10/09/2023 2000 MON
3. Incident Commander(s) and Command Staff:			
		CHIEF	EVERETT ROBBINS III
IC/UC	ALAN LAWSON	SUPPLY UNIT	DAVID RICHARDS LOIS ANDERSON (T)
DEPUTY IC	NATHAN RABE	FACILITIES UNIT	JASON BAUER
SAFETY OFFICER	DUANE VAN WOERT; GARY MCBRIDE KURT KRECH, BRIAN WESEMANN	GROUND SUPPORT UNIT	KYLE ROBBLEE
INFORMATION OFFICER	MICHELE LABODA JOSIE WILLIAMS, JOHN FITZROY	COMMUNICATIONS UNIT	TOM HERMAN; LEROY SISLEY BRYAN MASSEY (T)
LIAISON OFFICER	PATTI QUIRK	MEDICAL UNIT	MARIANN TURLEY TRINA MCCANDLESS
HUMAN RESOURCES	DEBBIE ROBINSON	SECURITY UNIT	
4. Agency/Organization Representative(s):			
Agency/Organization	Name	FOOD UNIT	GEOFFREY CROSBY
USFS AA	DARREN CROSS - MCKENZIE RIVER RANGER DISTRICT KEVIN LARKIN - DESCHUTES NATIONAL FOREST	7. Operations Section:	
USFS AA	STEPHANEY KERLEY - LAGRANDE RANGER DISTRICT	LEAD OPS	DEAN LANGE
ODF AA	CHRIS CLINE	PLANNING OPS	STEVE NORTH
ODF AGENCY REP	JOHN FLANNIGAN; CRAIG PETTINGER	FIELD OPS	BRUCE MEYER JOSH RIEPE (T)
BLM AA	DENNIS C. TEITZEL NORTHWEST OREGON BLM	DIVISION/GROUP	BEDROCK REPAIR LARRY (MARK) ALVARADO
LEAD READ	TOM DEMEO	DIVISION/GROUP	LOOKOUT REPAIR TIM LOVE
LEAD DANGER TREE READ	JAMES RUDISILL	7b. Air Operations Branch:	
5. Planning Section:			
CHIEF	LAURIE COX	HELICOPTER MANAGER	RAY WILSON
RESOURCES UNIT	DONNA BERUBE DARLA SMITH	8. Finance/Administration Section:	
SITUATION UNIT	ROGER HART OLE SMITH (T)	CHIEF	ANNETTE PAINOVICH; LINDA ONEAL
DOCUMENTATION UNIT	SABRINA MCCOMB	DEPUTY	LOUISE DAY
DEMOBILIZATION UNIT	ELIZABETH O'NEAL	TIME UNIT	CARI PROVENCHER
FIRE BEHAVIOR ANALYST	FORREST OWNBEY	PROCUREMENT UNIT	SHELLEY KLUZ
TRAINING SPECIALIST	NEAL COX ADAM MICONE (T)	COST UNIT	JEANNE CHRISTENSEN (T)
GIS SPECIALIST	TED COUILLARD GREG DEYOE (T)		
TECHNOLOGY SUPPORT SPECIALIST	BILL MILLS DAVID FLORES JR (T)		
INCIDENT METEOROLOGIST	MATTHEW CALLIHAN		
6. Logistics Section:			
9. Prepared By:			
Name:	DONNA BERUBE	Position/Title:	RESL
Signature:			
ICS 203			

Division/Group Assignment List (ICS 204 WF)
Controlled Unclassified Information//Basic

1. Incident Name:			3.			
BEDROCK LOOKOUT			Branch:		Division/Group	
2. Operational Period: DAY			BEDROCK REPAIR			
Date/Time From: 10/09/2023 0700 MON		Date/Time To: 10/09/2023 2000 MON				
4. Operations Personnel						
FIELD OPS		BRUCE MEYER JOSH RIEPE (T)				
DIVISION/GROUP SUPERVISOR		MARK ALVARADO (LWD 10/11)				
5. Resources Assigned this Period						
Strike Team / Task Force / Resource Designator		LWD	Leader	Number Persons	Drop Off PT./Time	Pick Up PT./Time
TFLD O-967.71		10/10	ANDREW SCHAFFRAN	1		
TFLD O-967.17		10/10	SCOTT CLEAVE	1		
ARCH O-1046 (DT)		10/13	TRISTEN GRIFFIN	1		
ARCH (T) O-981 (DT)		10/10	JUSTIN MEYER	1		
REAF O-997 (DT)		10/10	MARC DASHER	1		
REAF O-1033		10/14	BENJAMIN HARROLD	1		
REAF O-1040 (DT)		10/14	AMANDA SMITH	1		
REAF O-1052		10/18	THOMAS DEMEO	1		
REAF O-1055		10/21	CHRISTOPHER MARTIN	1		
6. Control Operations/Work Assignments:						
<p><u>Task:</u> Search for, and backhaul accountable property.</p> <p><u>Purpose:</u> Verify accountable property has been backhauled to supply.</p> <p><u>End State:</u> Accountable property has been backhauled to supply.</p>						
7. Special Instructions:						
DT: Denotes Danger Tree REAF						
8. Division/Group Communication Summary						
Function	Channel	RX Frequency N/W	RX Tone/NAC	TX Frequency N/W	TX Tone/NAC	Mode
TACTICAL	SEE COM PLAN					
COMMAND	SEE COM PLAN					
9. Prepared By (Resource Unit Leader)			Approved By (Planning Section Chief)		Date	Time
DARLA SMITH			LAURIE COX		10/08/2023	1900

Division/Group Assignment List (ICS 204 WF)

Controlled Unclassified Information//Basic

1. Incident Name:				3.			
BEDROCK LOOKOUT				Branch:		Division/Group	
2. Operational Period: DAY							
Date/Time From: 10/09/2023 0700 MON		Date/Time To: 10/09/2023 2000 MON		LOOKOUT REPAIR			
4. Operations Personnel							
FIELD OPS		BRUCE MEYER JOSH RIEPE (T)					
DIVISION/GROUP SUPERVISOR		TIM LOVE					
5. Resources Assigned this Period							
Strike Team / Task Force / Resource Designator		LWD	Leader	Number Persons	Drop Off PT./Time	Pick Up PT./Time	
TFLD O-1017		10/12	BRIAN BORNONG	1			
TFLD (T) O-873		10/11	KODI LESLIE	1			
TFLD (T) O-1019		10/14	CHRIS L LEWIS	1			
HEQB O-1009		10/14	BRIAN YARROW	1			
HEQB O-1010		10/13	ZACHARY ST JOHN	1			
HEQB (T) O-869		10/11	MATTHEW BACA	1			
HEQB (T) O-874		10/10	LOGAN PARSLEY	1			
HEQB (T) O-907		10/10	ERIC FRANTA	1			
HEQB (T) O-1006		10/11	IAN INGOGLIA	1			
HEQB (T) O-1008		10/14	TREVOR HOLLENBECK	1			
STEN O-951		10/15	ERNEST PRAX	1			
FELB (T) O-877		10/10	FORREST CLARK	1			
HC2 C-106 TOM FERY FARM C-1		10/10	SERAFIN GARCÍA	20			
ENG6 E-710 OREGON WOODS INC		10/17	PHILLIP AREZZI	3			
ENG6 E-711 OREGON WOODS INC		10/17	JESSICA WILCOX	3			
EXC2 E-227 DEAN INNOVATIONS (BDRK)		10/07	MARK TYDEMAN	2	NEW CREW/		
EXC2 E-614 FENTER LOGGING, LLC		10/11	KOLBY ORRISON	2			
EXC2 E-681 TJS MECHANICAL CUTTING LLC		10/15	BLAKE ROBB	1			
LOGL E-22 J & D		10/15	SAWYER LOGAN	2			
8. Division/Group Communication Summary							
Function	Channel	RX Frequency N/W	RX Tone/NAC	TX Frequency N/W	TX Tone/NAC	Mode	
TACTICAL	SEE COM PLAN						
COMMAND	SEE COM PLAN						
9. Prepared By (Resource Unit Leader)			Approved By (Planning Section Chief)			Date	Time
DARLA SMITH			LAURIE COX			10/08/2023	1900

Division/Group Assignment List (ICS 204 WF)
Controlled Unclassified Information//Basic

1. Incident Name:				3.		
BEDROCK LOOKOUT				Branch:	Division/Group	
2. Operational Period: DAY						
Date/Time From: 10/09/2023 0700 MON		Date/Time To: 10/09/2023 2000 MON		LOOKOUT REPAIR		
4. Operations Personnel						
FIELD OPS		BRUCE MEYER JOSH RIEPE (T)				
DIVISION/GROUP SUPERVISOR		TIM LOVE				
5. Resources Assigned this Period						
Strike Team / Task Force / Resource Designator		LWD	Leader	Number Persons	Drop Off PT./Time	Pick Up PT./Time
LOGL E-61 MARK JONES		10/12	JIM HILL	2		
LOGL E-351 MILLER		10/11	EVAN PETERSON	2		
LOGT E-527 MARK JONES TRUCKING 2		10/12	TERRY LEWIS	1		
LOGT E-528 MARK JONES TRUCKING 3		10/12	CHAD BROWN	1		
CHP1 E-335 AXSUS		10/13	MIKE FOWLER	1		
CHP1 E-538 ANVIL BUILDERS		10/15	JUSTIN BOYLE	2		
CHP2 E-699 BIG BARK		10/12	MATT DERUSHA	2		
CHSL E-684 AXSUS ENTERPRISES		10/12	MANUEL NARANJO	1		
CHSL E-700 ANVIL BUILDERS		10/17	JUSTIN BOYLE	1		
SKD1 E-671 MKS LOGISTICS		10/14	ZACH DEBBAN	2		
SOFR O-967.72		10/15	JEFF KERR	1		
AMBO 15 E-277		10/13	LUCY CUMMINS	2		
AMBO E-433		10/15	AARON BLAIR	2		
REAF O-896		10/11	ASHLEY DI LEONARDI	1		
REAF O-1047		10/15	BRESA MARTIN	1		
REAF O-1051			JUSTIN GEERTSEN	1		
REAF O-1052		10/18	TOM DEMEO	1		
REAF (T) O-1041		10/14	SAVANNAH R STEELE	1		
REAF (T) O-1048		10/15	CAITLYN MARIE UHLENBRAUCK	1		
8. Division/Group Communication Summary						
Function	Channel	RX Frequency N/W	RX Tone/NAC	TX Frequency N/W	TX Tone/NAC	Mode
TACTICAL	SEE COM PLAN					
COMMAND	SEE COM PLAN					
9. Prepared By (Resource Unit Leader)			Approved By (Planning Section Chief)		Date	Time
DARLA SMITH			LAURIE COX		10/08/2023	1900

Division/Group Assignment List (ICS 204 WF)
Controlled Unclassified Information//Basic

1. Incident Name:				3.		
BEDROCK LOOKOUT				Branch:	Division/Group	
2. Operational Period: DAY						
Date/Time From: 10/09/2023 0700 MON		Date/Time To: 10/09/2023 2000 MON		LOOKOUT REPAIR		
4. Operations Personnel						
FIELD OPS	BRUCE MEYER JOSH RIEPE (T)					
DIVISION/GROUP SUPERVISOR	TIM LOVE					
5. Resources Assigned this Period						
Strike Team / Task Force / Resource Designator	LWD	Leader	Number Persons	Drop Off PT./Time	Pick Up PT./Time	
REAF (T) O-1049	10/16	CODY BENTLEY	1			
REAF O-		DANNY MATHEWS	1			
6. Control Operations/Work Assignments:						
<p><u>Task:</u> Continue repair work as appropriate. Backhaul unnecessary equipment and supplies. <u>Purpose:</u> Continue completion of repair efforts. <u>End State:</u> Lands affected by suppression actions are restored in accordance with approved repair plans and accountable property is returned to supply.</p>						
7. Special Instructions:						
Limit traffic on 1506 Rd. No traffic allowed past DP12 on the 1506 Rd. Limit traffic on the 1508 Rd. Coordinate activities with HJ Andrews Staff.						
8. Division/Group Communication Summary						
Function	Channel	RX Frequency N/W	RX Tone/NAC	TX Frequency N/W	TX Tone/NAC	Mode
TACTICAL	SEE COM PLAN					
COMMAND	SEE COM PLAN					
9. Prepared By (Resource Unit Leader)			Approved By (Planning Section Chief)		Date	Time
DARLA SMITH			LAURIE COX		10/08/2023	1900

INCIDENT RADIO COMMUNICATIONS PLAN (ICS 205)		Incident Name		Date/Time Prepared		Operational Period Date/Time						
INCIDENT RADIO COMMUNICATIONS PLAN (ICS 205)		Lookout/Bedrock		10/08/2023 1900		10/09/2023 - All Shifts						
Zn Ch	Function	Channel Name/Trunked Radio System Talkgroup	Assignment	RX Freq N or W	RX Tone/NAC	TX Freq N or W	Tx Tone/NAC	Dev	Pwr	Mode A, D or M	Remarks	
1	COMMAND	BUCK MT	LOOKOUT	172.2500	103.5	164.9125	151.4	N	H	A	West of Lookout Fire	
2	COMMAND	FRISSELL PT	LOOKOUT	172.2500	103.5	164.9125	162.2	N	H	A	South East Corner Lookout	
3	COMMAND	FALL CREEK	BEDROCK	170.4625	103.5	164.8250	162.2	N	H	A	East Of Bedrock Fire	
4	COMMAND	TIMBER CK	BEDROCK	170.4625	103.5	164.8250	131.8	N	H	A	West of Bedrock Fire	
5	COMMAND	LOWELL	BEDROCK	170.4625	103.5	164.8250	110.9	N	H	A	North of Lowell Oregon	
6	TACTICAL	TAC 6	BEDROCK REPAIR	168.0500	156.7	168.0500	156.7	N	H	A	Bedrock Repair	
7	TACTICAL	TAC 7	LOOKOUT REPAIR	168.2000	156.7	168.2000	156.7	N	H	A	Lookout Repair	
8	TACTICAL	TAC 8	UNASSIGNED	168.6000	156.7	168.6000	156.7	N	H	A	UNASSIGNED	
9	TACTICAL	TAC 9	UNASSIGNED	168.2500	156.7	168.2500	156.7	N	H	A	UNASSIGNED	
10	TACTICAL	RED NET	IA	151.3400	156.7	151.3400	156.7	N	H	A	ODF RED NET	
11	Air-to-Ground	A/G 50	ALL DIVS	168.2875	NONE	168.2875	NONE	N	H	A	A/G PRIMARY - LOCAL	
12	Air-to-Ground	A/G 59	ALL DIVS	169.1125	NONE	169.1125	NONE	N	H	A	A/G SECONDARY - LOCAL	
13	Air-to-Ground	A/G PRI	ALL DIVS	172.4625	NONE	172.4625	NONE	N	H	A	AIR TO GROUND PRIMARY - BEDROCK	
14	Air-to-Ground	A/G SEC	ALL DIVS	172.6750	NONE	172.6750	NONE	N	H	A	AIR TO GROUND SECONDARY-BEDROCK	
15	Air-to-Ground	VMED 29	MEDEVAC	155.3475	NONE	155.3475	156.7	N	H	A	MEDICAL EVACUATION ONLY	
16	EMERGENCY	AIRGUARD	EMERGENCY	168.6250	NONE	168.6250	110.9	N	H	A	EMERGENCY USE ONLY	
Prepared By (Communications Unit Leader) <i>Dylan M. Mosby</i>				Incident Location:		Forest / Unit / Jurisdiction: OR-WIF						
				County:	State: OR	Latitude: " N	Longitude: W					
Lookout Communications (661) 349-1513												

For use by: All Bedrock and lookout units after 10/8. The forest repeaters are not linked together, Bedrock/Lookout communications may need to relay your message to another section of the fire. Please state which repeater you are using.



Fire Weather Forecast

Monday October 9, 2023



FORECAST NO: 76
PREDICTION FOR: Monday, Oct 9, 2023
ISSUED: 2000, Oct 8, 2023

FIRE: Bedrock/Lookout/Horse Creek/Pothole
UNIT: Willamette N.F.
Incident Meteorologist: Matt Callihan

- **DISCUSSION:** Rain is literally on the horizon as showers will begin between 1000-1100 and increase in intensity until 1400 before slowly tapering off by 1700. Conditions will then briefly dry through the evening until returning by 0200 as light showers, intensifying between 0600 and 1100 with another wave moving in at 1300 and extending until 2300 on Tuesday. Breezy winds from the southwest are also anticipated with gusts between 15 and 20 mph.

MONDAY:

- **WEATHER:** Cloudy, wet, breezy, and much cooler. High temperatures will be 15 to 20 degrees cooler than on Sunday.
- **WIND (20 FT):**
 - **Valleys/Lwr Slopes:** Downslope 1-4 mph becoming upslope 3-6 mph around 1000.
 - **Ridges/Upr Slopes:** From the south 2-5 mph becoming south-southwest 6-12 mph with gusts up to 17 mph after 1100.
- **MAX TEMPERATURES:** 60-65 valleys and mid-slopes, ridges 55-59.
- **MIN RH:** 65-75%
- **Rain Totals:** 0.20-0.40"
- **INVERSION:** Light to moderate, lifting around 1100. **MID HAINES:** 2.

MONDAY NIGHT:

- **WEATHER:** Cloudy and breezy, with lows 5-10 degrees cooler than Sunday night.
- **WIND (20 FT):**
 - **Valleys/Lwr Slopes:** SW 2-5 mph becoming downslope 1-3 mph briefly overnight.
 - **Ridges/Upr Slopes:** SSW 4-8 with gusts up to 12 mph.
- **MIN TEMPERATURES:** 38-42.
- **MAX RH:** 100%
- **Rain Totals:** 0.01-0.05"

TUESDAY:

- **WEATHER:** Cloudy, wet, and cooler. High temperatures will be 7 to 12 degrees cooler than on Monday.
- **WIND (20 FT):**
 - **Valleys/Lwr Slopes:** Downslope 1-4 mph becoming upslope 3-6 mph around 0900.
 - **Ridges/Upr Slopes:** From the southwest 7-13 mph with gusts up to 20 mph, peaking before 0900 and again between 1200-1800.
- **MAX TEMPERATURES:** 51-56 valleys and mid-slopes, ridges 46-50
- **MIN RH:** 88-98%
- **Rain Totals:** 0.75-1.00"
- **INVERSION:** Light, lifting around 1000. **MID HAINES:** 2.

Extended outlook: The last wave of showers slowly moves over the area through the afternoon on Wednesday, as an upper level ridge follows shortly behind the departing system and begins to build along the coast. This will continue to bring drier and warmer conditions Thursday and Friday before the next system moves onshore and showers return to the area on Saturday.

Sunrise: 07:20 PDT **Sunset:** 18:40 PDT

Bedrock/Lookout Weather Outlook



Based on the Pebble RAWs. Outlook only! See IAP for the Official Forecast

Created Sunday Oct 08 2023 by IMET Matt Callihan

	Mon	Tue	Wed	Thu	Fri	Sat
	9-Oct	10-Oct	11-Oct	12-Oct	13-Oct	14-Oct
Max Temp (F)	64	55	53	66	68	65
Min Humidity (%)	70	93	95	46	40	63
Max Humidity (%)	85	100	100	100	90	100
Winds (MPH Sustained)	10	12	11	10	7	6
Wind Direction	SSW	SW	SW	ENE	S->W	SW
Haines Index	2	2	2	4	3	2
Precipitation Chances	100	100	100	0	0	40
Chance Wetting Rain	60	100	70	0	0	30

Fire Weather Severity Moderate Moderate Moderate Moderate Moderate Moderate Moderate

KEY:

Max Temp	< 75 F	75 to 85 F	> 85 F
Min Humidity	> 40 %	25-40%	< 25 %
Humidity Recovery	> 70 %	50-70 %	< 50 %
Wind (Sustained MPH)	< 6 MPH	6-12 MPH	> 12 MPH
Haines Index	<=4	5	6

Moderate Burning
Conditions

Moderate Burning
Conditions

Moderate Moderate Moderate Moderate Moderate Moderate

Moderate Moderate Moderate Moderate Moderate Moderate

5 or more **EXTREME** blocks in a day equals

the potential for a Critical Weather Day

Take Caution - Critical
Burning Conditions

Extreme Burning
Conditions

Bedrock/Lookout/Horse Creek/Pothole Precip Outlook



24 Hour Precipitation Forecast (0500-0500)

Created Sunday Oct 08 2023 by IMET Matt Callihan

	Mon 9-Oct	Tue 10-Oct	Wed 11-Oct	Thu 12-Oct	Fri 13-Oct	Sat 14-Oct	Sun 15-Oct
Probability of Precip (%) Chance of ≥ 0.01 "	100%	100%	100%	0%	0%	40%	30%
Chance of ≥ 0.10 "	90%	100%	100%	0%	0%	35%	20%
Chance of Wetting Rain (%) Chance of ≥ 0.25 "	60%	100%	70%	0%	0%	30%	10%
Chance of ≥ 0.50 "	10%	70%	20%	0%	0%	5%	0%
Chance of ≥ 1.00 "	0%	50%	0%	0%	0%	0%	0%

FIRE BEHAVIOR FORECAST



FORECAST NUMBER: 58	TYPE OF FIRE: Wildfire
FIRE NAME: Lookout/Bedrock/Horse Creek/Pothole/Pete's Lake	OPERATIONAL PERIOD: Monday, 09 October 2023
DATE ISSUED: 08 October 2023	TIME ISSUED: 2000 Hours
UNIT: Willamette NF, OR-WIF	SIGNED: Forrest Ownbey /s/ <i>Forrest Ownbey</i> – FBAN

INPUTS

WEATHER SUMMARY: See Fire Weather Forecast for Details

Chance of precipitation with moist and cool conditions. Good relative humidity recovery.

FUELS:

Fuels in the fire area consist of Timber Litter (TL5) and Timber Understory (TU5) and lichen in the canopy. The Willamette National Forest and area has received approximately one inch of precipitation at the end of September. Live fuel moisture levels are good and resistant to contributing to fire spread. ERC's are well below the 90th percentile.

OUTPUTS

FIRE BEHAVIOR GENERAL:

Gravity and steep terrain creates potential for rolling material, fuel moisture content is high and do not create a receptive fuel. Primary fire activity will be smoldering in duff, stumpholes and under dense canopy cover.

- Grass – FM 2 (Timber grass / understory)
 - Rate of Spread – 3 to 7 feet per minute possible with flame lengths up to 2 foot.
- Brush – FM 5 (Shrub fuel type)
 - Rate of Spread – 2 to 4 feet per minute possible with flame lengths up to 2 feet.
- Timber – TU5 & TL5 (Timber Understory, Timber Litter)
 - Rate of Spread – 2 to 4 feet per minute possible with flame lengths up to 5 feet.



PIG S/U 15/30% Spotting Distance .0 miles Torching Not Likely Uphill Crown Not Likely

Fire behavior predictions are for the hottest and driest period of the day, gusts could increase fire behavior rates.

FIRE BEHAVIOR SPECIFIC:

Petes Lake & Lookout Fire: Fine fuels, needles and brush will likely reach moisture levels that will not support fire spread. Protected heavy fuels will continue to smolder until consumed or extinguished.

Bedrock, Pothole and Horse Creek Fire: Consumption has eliminated many smoldering opportunities but expect to see heavy logs and other protected fuel to continue smoldering until totally consumed or extinguished.

IA: New starts will struggle to spread with precipitation and fine fuel moisture level high. Fire intensity will allow for direct attack methods.

AIR OPERATIONS:

Low clouds and precipitation will limit the use of air resources and limit visibility.

SAFETY

Moist wet conditions could weaken tree foundations, along with smoldering at the base of trees. Fire order number 1, Keep informed on fire weather conditions and forecasts.



Resource Advisor Message - Lookout and Bedrock Fires

Tom Demeo, Lead READ, 503 267 3943, Thomas.Demeo@usda.gov; James Rudisill, Danger Tree Lead READ, 541-505-4773 Thomas.Rudisill@usda.gov

With rain coming take a look at the pumps and any fuel storage. Please ensure containment trays are empty, with fresh pads. Use visqueen, p-cord to make a tent over the pump and fuel where possible. Driving around please look for plugged culvert and ditches, and make sure water can flow even if you can't do a full repair.

Engineering and Roads

- Do not track heavy equipment on paved roads without the proper mitigations (ie. street grousers, rubber mats, etc.).
- If any road issues or concerns are encountered, please contact a REAF.

Dozer Lines

- Please work with Resource Advisors to clear proposed dozer lines.
- Please minimize the depth of the dozer line to the least extent required to meet objectives. Deep cuts are expensive, time consuming, and difficult to repair.

Heritage & Cultural

All cultural resources and human remains are protected by law. **Leave them in place- no collecting.** Call Resource Advisor if cultural resource like arrowheads, flakes/chips, or historic artifacts like cans & bottles are found and they will investigate.

Noxious Weeds

WEED WASH STATION:

- The Weed Wash stations are operational and located at Lookout Staging (Rock Quarry) and Lookout ICP
- Please use the weed wash upon arrival at the incident, and during demob
- Avoid the following weed: Slender False Brome and Spotted Knapweed

REDUCE THE SPREAD: Brush off packs & boots (especially laces) before leaving fire camp.



Tree Felling Operations

Please keep equipment on road surface to the greatest extent possible

Log Processing:

- Utilize existing openings and landings for decking, ditch lines/roadside is acceptable
- Process trees down to a 6" top (small end diameter). Use remaining for firewood logs, rehab, or chip
- Preferred Log Lengths (maximize length whenever possible): 41 foot Max – 17 foot Min
- 2' increments below 41', keeping logs as long as possible (41', 39', 37', etc....) Process unburnt trees on the unburnt side of the fireline. Process burnt trees on the burnt side of the fireline.
- Keep processed slash and tops out of decks and off roads
- If possible, sort decks by species and log lengths

Snags and Hazard Trees:

Old growth is a key value. Limit snagging to operational needs & limit bucking to retain long bowls of large felled trees or snags.

Water Quality and Fisheries

AERIAL DIPPING:

- Aerial dipping should only occur at approved dip sites. Blue River Res. has a use restriction to facilitate dipping. Check with your REAF for approval of dipping sites.
- Be sure to wash buckets when new aerial resources arrive at the fire, when switching dips sites, or when returning to the fire from off forest.

WATER DRAFTING:

- Limited Drafting is available at the bridge across Lookout Creek on the 1506 road in section 28. Check with the REAF for additional drafting locations as needed.
- Utilize fish screens when in fish bearing waterbodies (REAFs have these available).
- Maintain sufficient flow as to not dewater downstream reaches
- Utilize splash pans and absorbent pads. REAFs will assist if given the location.

CHIPPING STANDARDS:

- Provide a 30- foot buffer of no chipping at water crossings or culverts.
- Do not place chips into road ditch.
- Do not chip onto a steep slope where chips will slide back into the ditch.
- Broadcast chipped material, ensuring that chips are no more than 4" deep.



Safety Message

October 9, 2023

Situational Awareness: Communications

Every year when we take our LCES refresher, the “C” seems to be the subject we spend most of our time discussing. Clear, understandable communications are critical in the fire environment so remember:

- Establish and test solid communications before engaging your task on the incident.
- Communications should be brief and clear, if you don't understand what you have been told, ask questions.
- Always have a plan “B” if the prescribed communications do not work in places;
i.e. human repeaters, cell phones.
- Communications are two way: sender and receiver.
- Critical information will be transmitted over the assigned radio channels for all the appropriate resources to hear.
- Cell phones is good for some things but not all things.

With the changes to Communications be sure you know the repeater you are on and state that when calling into Communications.

BE ALERT KEEP CALM THINK CLEARLY ACT DECISIVELY

Safety Officers: VanWoert, McBride, Wesemann, Krech

**IAP Component Deliberate Risk Assessment
Hazard Summary
October 9, 2023**

Hazard	Mitigation
Driving/road conditions	<ul style="list-style-type: none"> • Reduce windshield time (2:1 work ratio) • Signing of all incident roads that provide access to divisions • Daily updated travel plan maps • Practice defensive driving. In local communities obey the posted speed limits
Overhead hazards Aviation Powerlines	<ul style="list-style-type: none"> • Select tactics that minimize firefighter exposure • Review IRPG pgs. 61-79, when working near air operations • Identify hazardous trees and snags, fell as appropriate • Review IRPG pgs. 22-23, when working near powerlines
Personal Health/Wellness	<ul style="list-style-type: none"> • Wash hands/ hand sanitizer • Remove dirty Nomex shirts prior to entering chow lines • Mask will be available if needed (camp crud, covid, flu)
Repair/ backhaul	<ul style="list-style-type: none"> • Identify and communicate hazards and manage appropriately, including hazard trees • Drive carefully on forest roads and when transiting Hwy. 126 • Know the location of the nearest medical resources • Use 4X4 or UTV's to shuttle supplies to areas where stake side and van trucks can stay on hardened roads
Public Interaction	<ul style="list-style-type: none"> • Be considerate of the public! We want to interact with the public, answer questions
Communications	<ul style="list-style-type: none"> • Human repeaters • Change batteries often
Mental Health	<ul style="list-style-type: none"> • Critical Incident Stress Management • Human Resource contacts available for all resources
Gravity Hazards	<ul style="list-style-type: none"> • Post lookouts • Situational awareness of rolling materials. (Rocks, tree's) • Situational awareness of falling green/ snag tree's
Heavy Equipment	<ul style="list-style-type: none"> • Blind zone (Operator) • Rolling material (rocks, trees, stumps) • Flying debris • Tree strikes
IA	<ul style="list-style-type: none"> • Follow protocols and communications links established with NW10 • IA resources designated in IAP, use closest forces and leadership assigned to supervise IA forces during a response • IA resources must be familiar with IA comms channel group

Team 10 Line Supply Order		Order #			
Date & Time	Deliver To Location/Time	Delivery Method			
Order Placed	(Division, Drop Point, Heli Spot, Lat/Long)	(Driver, Heli, DIVS to P/U)			
Order received in Communications (name & time)					
Order received in Supply by (name & time)					
Order received in Transportation by (name & time)					
Order received in Helibase by (name & time)					
Order shipped to line by (name & time)					
#	Item	Amount	#	Item	Amount
1	Porta-Tank 1000 gal #0661		33	Drip Torch #0241 (EMPTY)	
2	Pumpkin 3000 gal. #0568		34	Fusee #0105	
3	Backpack Pump/Bladder Bag #1149		35	Meals #1842 (MRE 12/Cs)	
4	Mark III pump + Kit #0148		36	Water 5 gal cubies	
5	Lightweight Pump #0670		37	Gatorade 24/Cs	
6	Volume Pump #1222		38	Batteries, AA #0030 (24/pg)	
7	Hose 1 1/2" #1239 (100')		39	Batteries, AAA #7471 (24/pg)	
8	Hose 1" #1238 (100')		40	Sleeping Pad #1566	
9	Hose 3/4" #1016 (50')		41	Sleeping Bag #1062	
10	Reducer 1 1/2" to 1" #0010		42	Fly Tent #0960	
11	Reducer 1" to 3/4" #0733		43	Plastic Sheeting #0144	
12	Gated "y" 1 1/2" #0231		44	Parachute Cord #0533	
13	Gated "y" 1" #0259		45	Fiber Tape #0222	
14	Gated "y" 3/4" #0904		46	Garbage Bags #0021	
15	In-line Tee 1 1/2" to 1" #0230		47	Leadline 3000 lbs #0528	
16	Nozzle KK 1 1/2" #1082		48	Cargo Net 3000 lb #0531	
17	Nozzle KK 1" #1081		49	Swivel 3000 lb #0526	
18	Nozzle 3/4" #0627		50	Foam 5 gal #1145	
19	Nozzle, Forester 1" #1081		51	Toilet Paper #0142	
20	Mop-up Kit #0772		52	Bath in a Bag, Small #0206	
21	Team 10 Hose Lay Kit		53	Bath in a Bag, Large #0712	
22	Sprinkler kit #1048 (4 head)		54	Coffee Kit #0480	
23	Gas Unteaded/5 gal		55	Coffee 3lb Can	
24	2 Cycle Oil #0341 (quart)		56	Slingable Bag (Pot.) #0425	
25	2 Cycle Oil #3444 (1 gal mix)		57	Slingable Bag (Sup.) #0426	
26	Diesel (5 gal)		58		
27	Bar Oil #1869 (gallon)		59		
28	Shovel #0171		60		
29	Pulaski #0146		61		
30	Mcleod #0296		62		
31	Combi #1180		63		
32	Chainsaw Kit #0340		64		

TEAM 10	
Item	Amount
1 1/2 in. synthetic hose	5300 ft
1 in. synthetic hose	2700 ft
1 1/2 in. gated wye	27
1 1/2 in. - 1 in. reducers	27
Twin Tip Forester Nozzles	27

Toy Hose Compliment Kit	
3/4 in. garden hose	2700 ft
3/4 in. gated wyes	27
3/4 in. Nozzle	27
3/4 in. valve, shutoff, ball	27
1 in. - 3/4 in. reducer	27

Sprinkler Kit NFES # 1048	
Item	Amount
Sprinkler head w/couplings	4
3/4 in. garden hose	250 ft
1 1/2 x 1 1/2 x 1 in. Tee	4
1 x 3/4 reducer	4
1 1/2 in. - 1 in. reducers	1
3/4 in. gated wyes	2
3/4 in. valve, shutoff, ball	4
3/4 in. Nozzle	1
1 in. nozzle, pastic 60 gpm	1
10 in. adjustable wrench	1

NOTE: 3 kits to 1 mark III pump, depending on slope

LINE ORDER PROCESS

All line orders will go through the Comm. Unit, preferably via radio

ICP is Located at the Comfort Suites
969 Kruse Way Springfield, Oregon

To check in contact Sharon Frazey (509) 856-5545

Check In Form



To demob contact Liz O'neal at (360) 259-9120

Demob



BEFORE YOU GO TO Finance & DEMOB

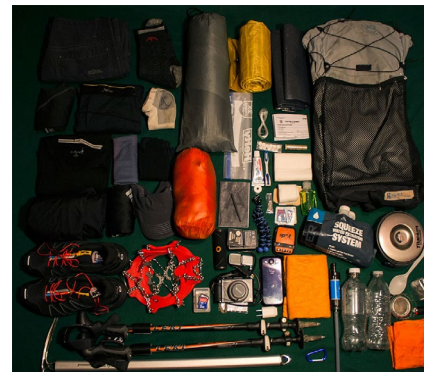
Check and Follow the schedule



Go through Weed Wash and Inspection



Return Supplies



Return Radios



**At Scheduled time.....
Finish your Finances**

Go to DEMOB Desk to Finalize your Demob process.

**Questions Regarding your DEMOB Call
360-259-9120**



For an Efficient DEMOB

- Return all items to supply and communications
- Have Inspections completed
- Have Weed Wash done

Arrive to Finance at the time designated on DEMOB list

- If you don't come at your time you will have to stand in line
- When your finances are completed, go to DEMOB to finish process.

DEMOB

Incident: LOOKOUT US-OR-WIF-230327

10/09/2023 - 10/10/2023

10/09/2023

EQUIPMENT

STK1	E-583	0700	STK1 - TRAILS END BBQ CO - C29966
------	-------	------	-----------------------------------

OVERHEAD

EQTR	O-983	0700	TEEMS, TESSA L
RCDM	O-641	0700	WISDOM, AL
SEC1	O-828	0715	JOHNSON, LUKE ANDREW
SEC1	O-966	0715	NEUMANN, SCOTT
SOF2	O-980	0730	MESSENGER, ERIC A

10/10/2023

EQUIPMENT

FUT2	E-311	0700	ED STAUB
STK	E-591	0700	M&M RESOURCES
LOGL	E-21	0700	J & D LOGGING AND CONTRACTING LLC
LOGL	E-351	0720	MILLER

CREWS

CRW2	C-106	0720	TOM FERY FARM C-1
CRWC	C-10000	0720	TORRES CONTRACTING, INC - SALEM
CRWC	C-10001	0720	TORRES CONTRACTING, INC - SALEM
CRWC	C-10003	0740	TJ FORESTRY CONTRACTING LLC -

OVERHEAD

STEN	O-951	0730	PRAX, ERNEST
ARCH	O-981	0730	MEYER, JUSTIN LEE
COMT	O-954	0745	BURNS, WALTER
EQTR	O-994	0745	ESPLAIN, MARILYN
FELB	O-877	0800	CLARK, FORREST ALEXANDER
GSUL	O-995	0800	CISNEROS, GUADALUPE R
HEQB	O-874	0815	PARSLEY, LOGAN HALE
HEQB	O-907	0815	FRANTA, ERIC
MEDL	O-969	0830	MCCANDLESS, KATRINA LEE
REAF	O-896	0830	DI LEONARDI, ASHLEY B
REAF	O-997	0845	DASHER, MARC

EQPM\	O-987	0845	ALVARADO, LARRY MARK
FACL	O-892	0900	FRAZIER II, LARRY BLISS
HEQB	O-869	0900	BACA, MATTHEW BRIAN
HEQB	O-873	0915	LESLIE, KODI
HEQB	O-1006	0915	INGOGLIA, IAN JOHN-VINCENT
SEC1	O-782	0930	HIRSCHBOECK, ROBERT JOHN

HUMAN RESOURCE MESSAGE

LOOKOUT FIRE

OCTOBER 9, 2023

How many of you have wanted to have a discussion with your family, significant other, or your support team about what you encounter being a Wildland Firefighter? These are crucial conversations to have at the start of every season and to possibly revisit throughout the season, but where do you start?

I want to take a few minutes to introduce you to a publication called A Preparedness Guide for Wildland Firefighters and Their Families. This publication can help give you a starting point for those discussions. Some of the topics you can find are:

- Hazards and Risks Associated with wildland firefighting.
- Topics and ideas for discussions with family and friends about your wildland firefighting job
- Resources for peer support, individual counsel, planning and response to death and serious injury.
- Organizations that support wildland firefighters and their families.

Preparing yourself and your support network for the exciting and dangerous work you are engaged in is challenging and rewarding. It is also the least we can do to help create understanding and give some peace of mind to one another. If you would like a copy of the document just scan the QR code to access the publication.

Debbie Robinson - HRSP
509-899-5010



Thought For The Day:

**Knowledge speaks but wisdom
listens.**

Training Message

ARE YOU ORDERED AS A TRAINEE?

If you are ordered as a trainee, please sign up for the incident trainee program. Please register with the incident training specialist by filling out the questionnaire from the QR code in the IAP, please email scans or pictures of your incident qualification card and front cover of your task book to adam.micone1@outlook.com.

During your time on this incident ensure you work with your trainer to complete the tasks you need evaluated if possible. Ensure your trainer evaluates your position task book tasks that you can complete, and they complete your position task book evaluation page as well as a performance evaluation (ICS-225). I have a training folder within the QR Code with both a position task book evaluation record and a performance evaluation for your trainer to use if needed. Upon completion of your assignment (***please complete a couple days early to speed up demob***), please email, scans or pictures of your position task book evaluation and performance evaluation (ICS-225) to adam.micone1@outlook.com. These will be checked for accuracy, logged in the system, and sent on to your home unit training contact through email. Adam is working remotely. Please contact me if you have any further questions, please reach out to adam.micone1@outlook.com or 509-589-1387, we look forward to serving you.

Have a great Day!

Adam Micone

NW Team 10 Incident Training Specialist (t)



FIRE INFORMATION

Phone: 541-215-6735

Email: 2023.lookout@firenet.gov



EMAIL

Inciweb (Lookout): [inciweb.wildfire.gov/
incident-information/orwif-lookout-fire](http://inciweb.wildfire.gov/incident-information/orwif-lookout-fire)

Inciweb (Bedrock): [inciweb.wildfire.gov/
incident-information/orwif-bedrock-fire](http://inciweb.wildfire.gov/incident-information/orwif-bedrock-fire)

Inciweb (Petes Lake): [inciweb.wildfire.gov/
incident-information/orwif-petes-lake-fire](http://inciweb.wildfire.gov/incident-information/orwif-petes-lake-fire)

Facebook (Lookout): facebook.com/LookoutFire2023

Facebook (Bedrock): facebook.com/BedrockFire2023

Facebook (Petes Lake): [facebook.com/Petes Lake Fire Info](https://facebook.com/PetesLakeFireInfo)

Facebook (NW Team 10): facebook.com/NorthwestTeam10

Help us tell the story of this fire with pictures and short videos (30 seconds or less)

SHARE YOUR PHOTOS OR VIDEO

Catch us during the morning briefing or send to the PIO team via email to

2023.peteslake@firenet.gov

Please provide your name for photo credit and include basic info about where the photo was taken and what's happening in it.

LOST AND FOUND

Information Trailer at the ICP

(38656 Kickbush Lane, Springfield, OR 97478)

PACKAGES

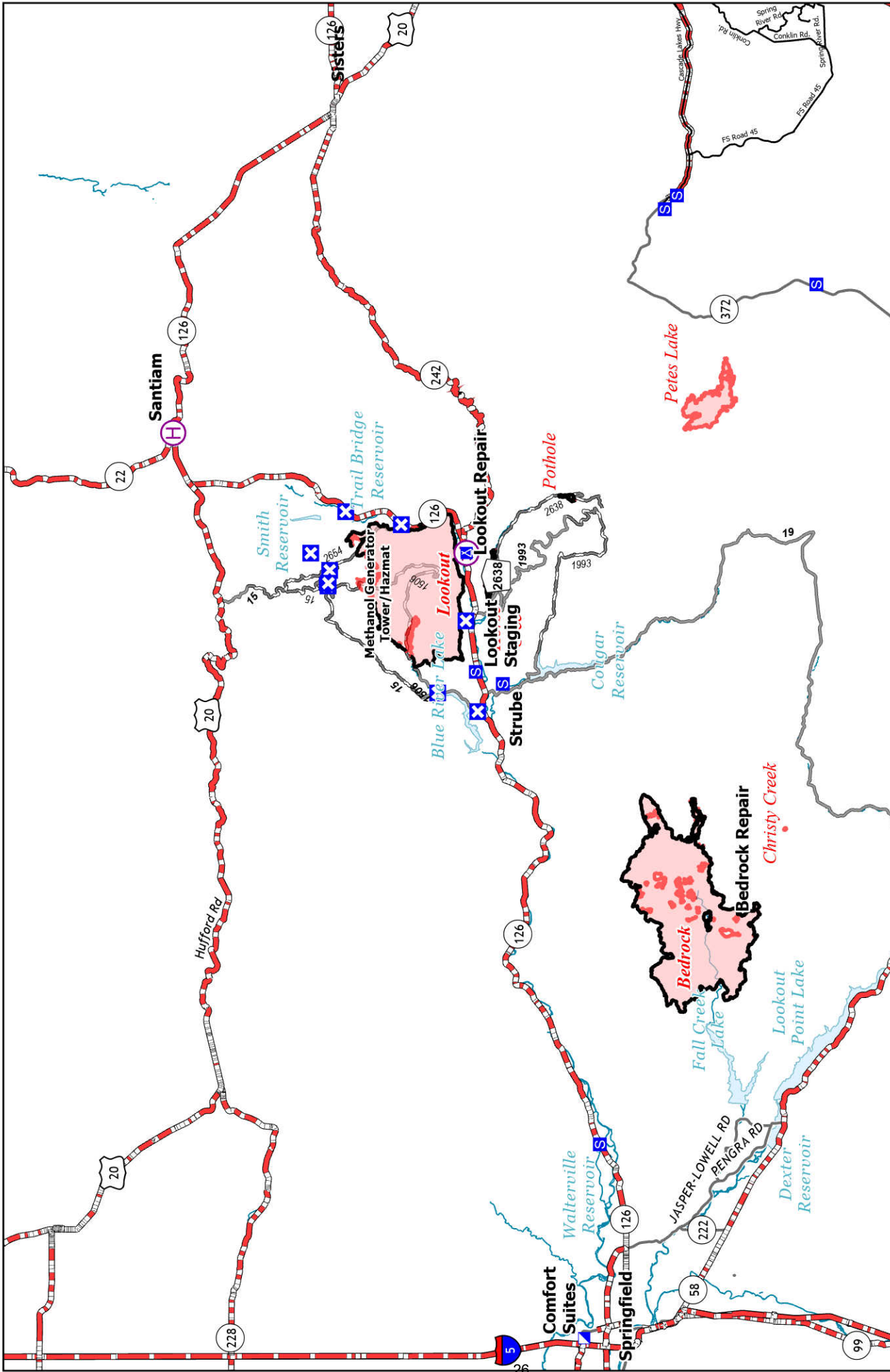
Your Name, Your Position, Contact Phone Number
Lookout Fire

Walterville Post Office - General Delivery

39333 McKenzie Hwy

Walterville, OR 97489





Lookout ICP : Comfort Suites - Springfield, 969 Kruse Way Springfield, OR 97477
Lookout Staging: 54547 McKenzie Hwy, Blue River, OR 97413 - Weed Wash Station

- Airstrip or Airport
- Helibase
- Incident Command Post
- Closure
- Camp
- Staging Area
- Fire Area



Transportation
 Bedrock - ORWIF-230266
 Lookout - ORWIF-230327
 Petes Lake - ORWIF-230409
 10/9/2023

Incident/Project Name		Operational Period						
LOOKOUT/BEDROCK		Date/Time:	10/09 - 10/10 0700-0700					
Ambulance Services								
Name	Complete Address	Phone & EMS Frequency	Advanced Life Support (ALS) Yes No					
Bend Fire Department	1212 SW Simpson Ave, Bend, OR 97702	911 / 541-693-6911	X					
Sister-Camp Sherman R.F.P.D	301 South Elm Street Sisters, OR	911 / 541-693-6911	X					
Eugene/Springfield Fire (Lookout Transport)	1705 W. 2 nd Ave Eugene, OR	Lane County 911	X					
Air Ambulance Services								
Name	Phone	Type of Aircraft & Capability						
Life Flight – Eugene or Redmond	Order through Lookout Comms 800-232-0911	Critical Care Team of Paramedics and RN NVG, Freq: VMED 29						
Airlink - Bend	Order through Lookout Comms 800-353-0497	Critical Care Team of Paramedics and RN NVG, Freq: VMED 29						
Wenatchee Helitack Short Haul	Ordered by Lookout Comms	Short Haul, not-dedicated to the incident – Daytime use only						
Hospitals								
Name Complete Address	GPS Datum – WGS 84 Coordinate Standard Degrees Decimal Minutes		Travel Time Air Gnd		Phone	Helipad Yes No		Level of Care Facility
	Lat:	Long:	FAA					
PeaceHealth Sacred Heart Medical Center 333 Riverbend Drive Springfield, OR 97477	44° 04.876' N	123° 01.588' W	10 min	20 min	541-222-6931	X		Level 2 Trauma
	OG64							
St Charles Bend 2500 NW Neff Rd Bend, OR 97701	44° 04.102' N	121° 16.054' W	45 mins	2 hours 20 min	541-382-4321	X		Level 2 Trauma
	54OR							
Legacy Emanuel Hospital 3001 N Gantenbein Ave Portland, OR 97227	45° 32.668' N	122° 40.293' W	45 mins	2 hours	(406) 329-5635	X		Level 1 Trauma Burn Center
	7OR5							
OHSU Hospital 3181 SW Sam Jackson Park Rd, Portland, OR 97239	45° 29.950' N	112° 41.110' W	45 mins	2 hours	ER (503) 494-7550	X		Level 1 Trauma
	9OR6							

MEDICAL PLAN (ICS 206 WF)

Controlled Unclassified Information//Basic

Division Branch Group	Area Location Capability		
RANGER OFFICE	EMS Personnel:	Mariann Turley	MEDL 509-496-9370
	Equipment Available on Scene:	ALS	
	Medical Emergency Channel:	Lookout Communications	
	Approved Helispot:	N/A	
ICP	EMS Personnel:	Trina McCandless	MEDL 907-305-0979 AMBO 301 - Alexis Wasden (EMPF) 385-895-7738
	Equipment Available on Scene:	ALS Ambulance, Medical Yurt w/ OTC Meds	
	Medical Emergency Channel:	Lookout Communications	
	Approved Helispot:	N/A	
BEDROCK REPAIR	EMS Personnel:	Unstaffed	
	Equipment Available on Scene:	N/A	
	Medical Emergency Channel:	Lookout Communications	
	Approved Helispot:	H-5, H-10, H-32, H-38, H-64, Pheasant Helispot	
LOOKOUT REPAIR	EMS Personnel:	AMBO 15 - Lucy Cummins (EMPF) 567-274-8888 AMBO 308 - Aaron Blair (EMPF) 480-580-6931	
	Equipment Available on Scene:	ALS Ambulance	
	Medical Emergency Channel:	Lookout Communications	
	Approved Helispot:	H-1, H-2, H-20, H-30, H-41, H-42, H-43, Santiam	
Prepared By (Med Unit Leader)	Date/Time	Reviewed By (Safety Officer)	Date/Time
Mariann Turley MEDL Katrina McCandless MEDL	10/08/2023 - 2000	Duane Van Woert SOF2 Brian Wesemann SOF2	10/08/2023 - 2000

MEDICAL PLAN (ICS 206 WF)

Controlled Unclassified Information//Basic

<p>FOR A NON-EMERGENCY INCIDENT, WORK THROUGH CHAIN OF COMMAND TO REPORT AND TRANSPORT INJURED PERSONNEL AS NECESSARY.</p> <p>FOR A MEDICAL EMERGENCY: IDENTIFY ON SCENE INCIDENT COMMANDER BY NAME AND POSITION AND ANNOUNCE "MEDICAL EMERGENCY" TO INITIATE RESPONSE FROM IMT COMMUNICATIONS/DISPATCH.</p>					
<p>Use the following items to communicate situation to communications/dispatch.</p>					
<p>1. CONTACT MUD LICK COMMUNICATIONS / DISPATCH (Verify correct frequency prior to starting report) <i>Ex: "Communications, Div. Alpha. Stand-by for Emergency Traffic."</i></p> <p>2. INCIDENT STATUS: Provide incident summary (including number of patients) and command structure. <i>Ex: "Communications, I have a Red priority patient, unconscious, struck by a falling tree. Requesting air ambulance to Forest Road 1 at (Lat./Long.) This will be the Trout Meadow Medical, IC is TFLD Jones. EMT Smith is providing medical care."</i></p>					
Severity of Emergency / Transport Priority	<p><input type="checkbox"/> RED / PRIORITY 1 Life or limb threatening injury or illness. Evacuation need is IMMEDIATE <i>Ex: Unconscious, difficulty breathing, bleeding severely, 2° – 3° burns more than 4 palm sizes, heat stroke, disoriented.</i></p> <p><input type="checkbox"/> YELLOW / PRIORITY 2 Serious Injury or illness. Evacuation may be DELAYED if necessary. <i>Ex: Significant trauma, unable to walk, 2° – 3° burns not more than 1-3 palm sizes.</i></p> <p><input type="checkbox"/> GREEN / PRIORITY 3 Minor Injury or illness. Non-Emergency transport <i>Ex: Sprains, strains, minor heat-related illness.</i></p>				
Nature of Injury or Illness & Mechanism of Injury			<p><i>Brief Summary of Injury or Illness (Ex: Unconscious, Struck by Falling Tree)</i></p>		
Transport Request			<p><i>Air Ambulance / Short Haul/Hoist Ground Ambulance / Other</i></p>		
Patient Location			<p><i>Descriptive Location & Lat. / Long. (WGS84)</i></p>		
Incident Name			<p><i>Geographic Name + "Medical" (Ex: Trout Meadow Medical)</i></p>		
On-Scene Incident Commander			<p><i>Name of on-scene IC of Incident within an Incident (Ex: TFLD Jones)</i></p>		
Patient Care			<p><i>Name of Care Provider (Ex: EMT Smith)</i></p>		
<p>3. INITIAL PATIENT ASSESSMENT: Complete this section for each patient as applicable (start with the most severe patient)</p>					
<p>Patient Assessment: See IRPG PAGE 106</p>					
<p>Treatment:</p>					
<p>4. TRANSPORT PLAN:</p>					
<p>Evacuation Location (if different): (Descriptive Location (drop point, intersection, etc.) or Lat. / Long.) Patient's ETA to Evacuation Location:</p>					
<p>Helispot / Extraction Site Size and Hazards:</p>					
<p>5. ADDITIONAL RESOURCES / EQUIPMENT NEEDS:</p>					
<p><i>Example: Paramedic/EMT, Crews, Immobilization Devices, AED, Oxygen, Trauma Bag, IV/Fluid(s), Splints, Rope rescue, Wheeled litter, HAZMAT, Extrication</i></p>					
<p>6. COMMUNICATIONS: Identify State Air/Ground EMS Frequencies and Hospital Contacts as applicable</p>					
Function	Channel Name/Number	Receive (RX)	Tone/NAC *	Transmit (TX)	Tone/NAC *
COMMAND					
AIR-TO-GRND					
TACTICAL					
<p>7. CONTINGENCY: Considerations: If primary options fail, what actions can be implemented in conjunction with primary evacuation method? Be thinking ahead.</p>					
<p>8. ADDITIONAL INFORMATION : Updates/Changes, etc.</p>					
<p>REMEMBER: Confirm ETAs of resources ordered. Act according to your level of training. Be Alert. Keep Calm. Think Clearly. Act Decisively.</p>					