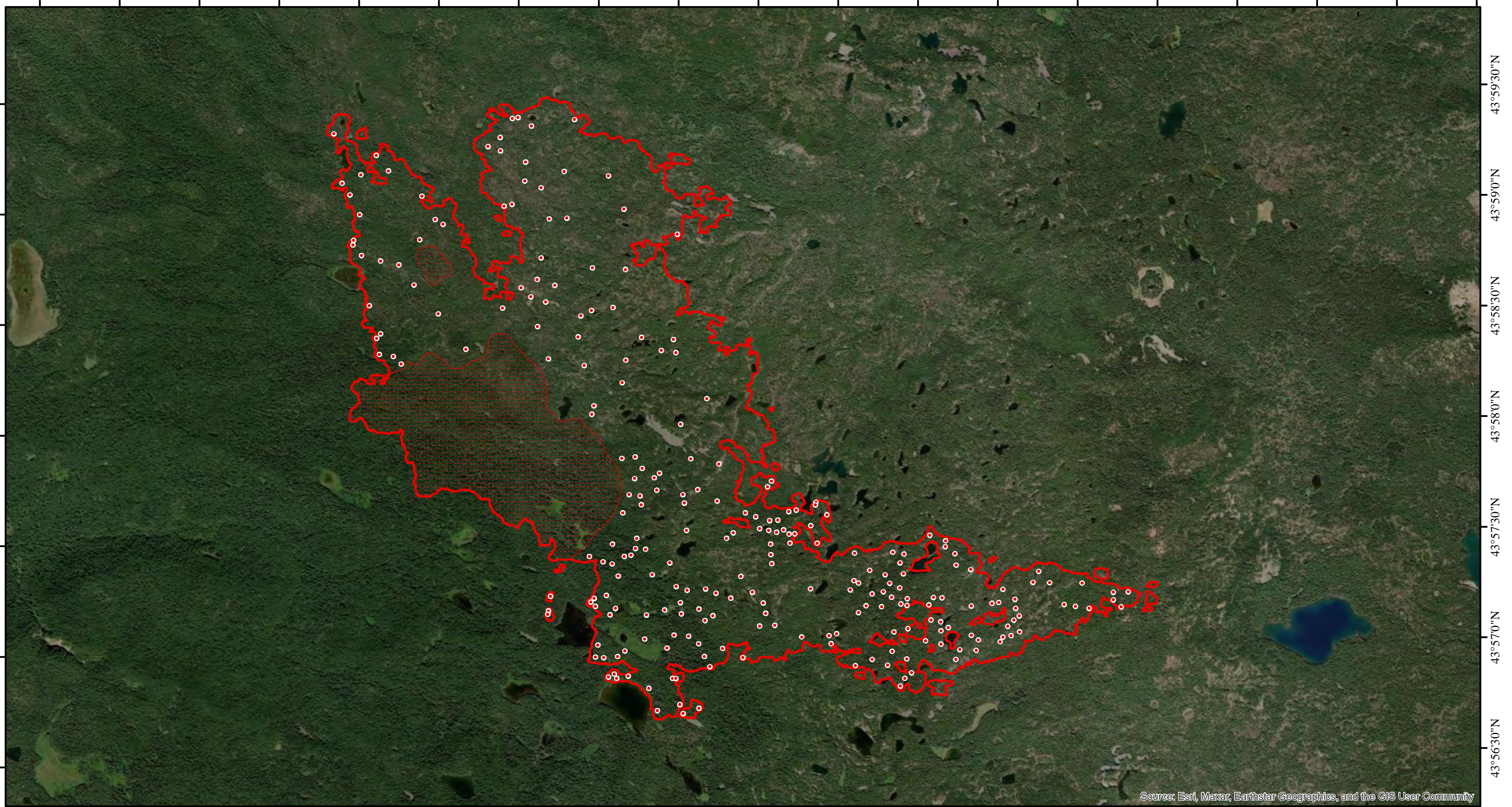


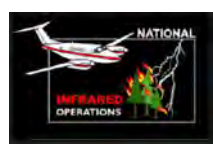
121°58'30"W 121°58'0"W 121°57'30"W 121°57'0"W 121°56'30"W 121°56'0"W 121°55'30"W 121°55'0"W 121°54'30"W 121°54'0"W 121°53'30"W 121°53'0"W 121°52'30"W 121°52'0"W 121°51'30"W 121°51'0"W 121°50'30"W 121°50'0"W 121°49'30"W



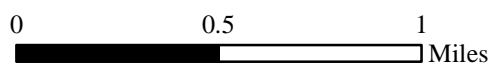
Source: Esri, Maxar, Earthstar Geographics, and the GIS User Community




121°58'30"W 121°58'0"W 121°57'30"W 121°57'0"W 121°56'30"W 121°56'0"W 121°55'30"W 121°55'0"W 121°54'30"W 121°54'0"W 121°53'30"W 121°53'0"W 121°52'30"W 121°52'0"W 121°51'30"W 121°51'0"W 121°50'30"W 121°50'0"W

**INFRARED MAP**  
**PETE'S LAKE**  
**OR-WIF-230409**  
Infrared (Interpreted) Acres: 3,268  
October 4, 2023 @ 1937 PDT



*IRIN: Cheron Ferland*  
*Duluth, MN*  
*Nad 83 Zone 10*



	IR Isolated Heat
	IR Heat Perimeter
	IR Scattered Heat