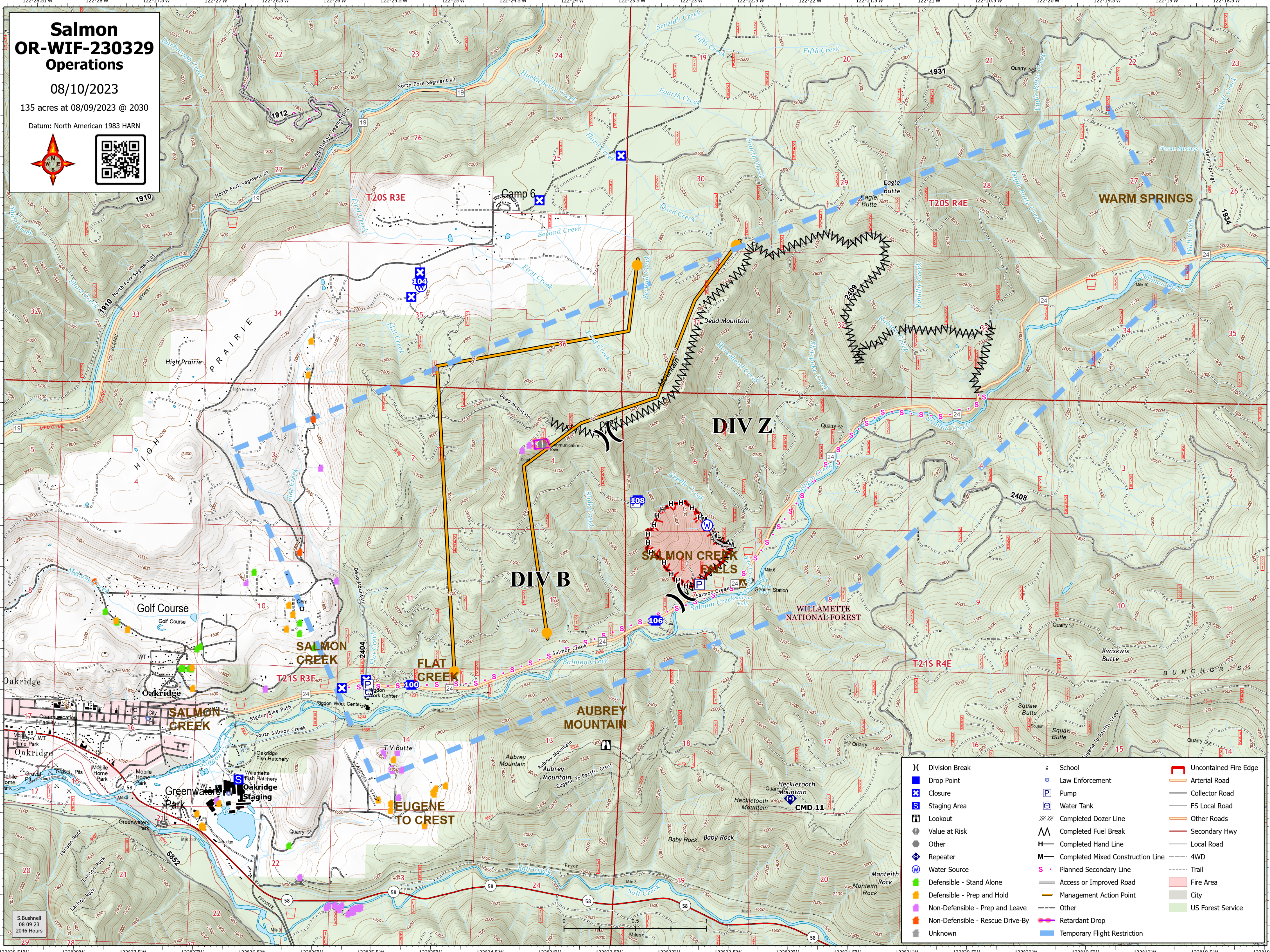


Salmon OR-WIF-230329 Operations

08/10/2023

135 acres at 08/09/2023 @ 2030

Datum: North American 1983 HARN



()	Division Break	⚡	School	🔴	Uncontained Fire Edge
📍	Drop Point	🚓	Law Enforcement	🛣️	Arterial Road
🚧	Closure	🚰	Pump	🛤️	Collector Road
🏠	Staging Area	🚰	Water Tank	🛤️	FS Local Road
🗺️	Lookout	🚧	Completed Dozer Line	🛣️	Other Roads
⚠️	Value at Risk	🚧	Completed Fuel Break	🛣️	Secondary Hwy
👤	Other	🚧	Completed Hand Line	🛣️	Local Road
📡	Repeater	🚧	Completed Mixed Construction Line	🛣️	4WD
🌊	Water Source	🚧	Planned Secondary Line	🛣️	Trail
🟢	Defensible - Stand Alone	🛣️	Access or Improved Road	🔴	Fire Area
🟡	Defensible - Prep and Hold	🛣️	Management Action Point	🟡	City
🟠	Non-Defensible - Prep and Leave	🛣️	Other	🟢	US Forest Service
🔴	Non-Defensible - Rescue Drive-By	🛣️	Retardant Drop		
👤	Unknown	🛣️	Temporary Flight Restriction		

S. Bushnell
08 09 23
2046 Hours