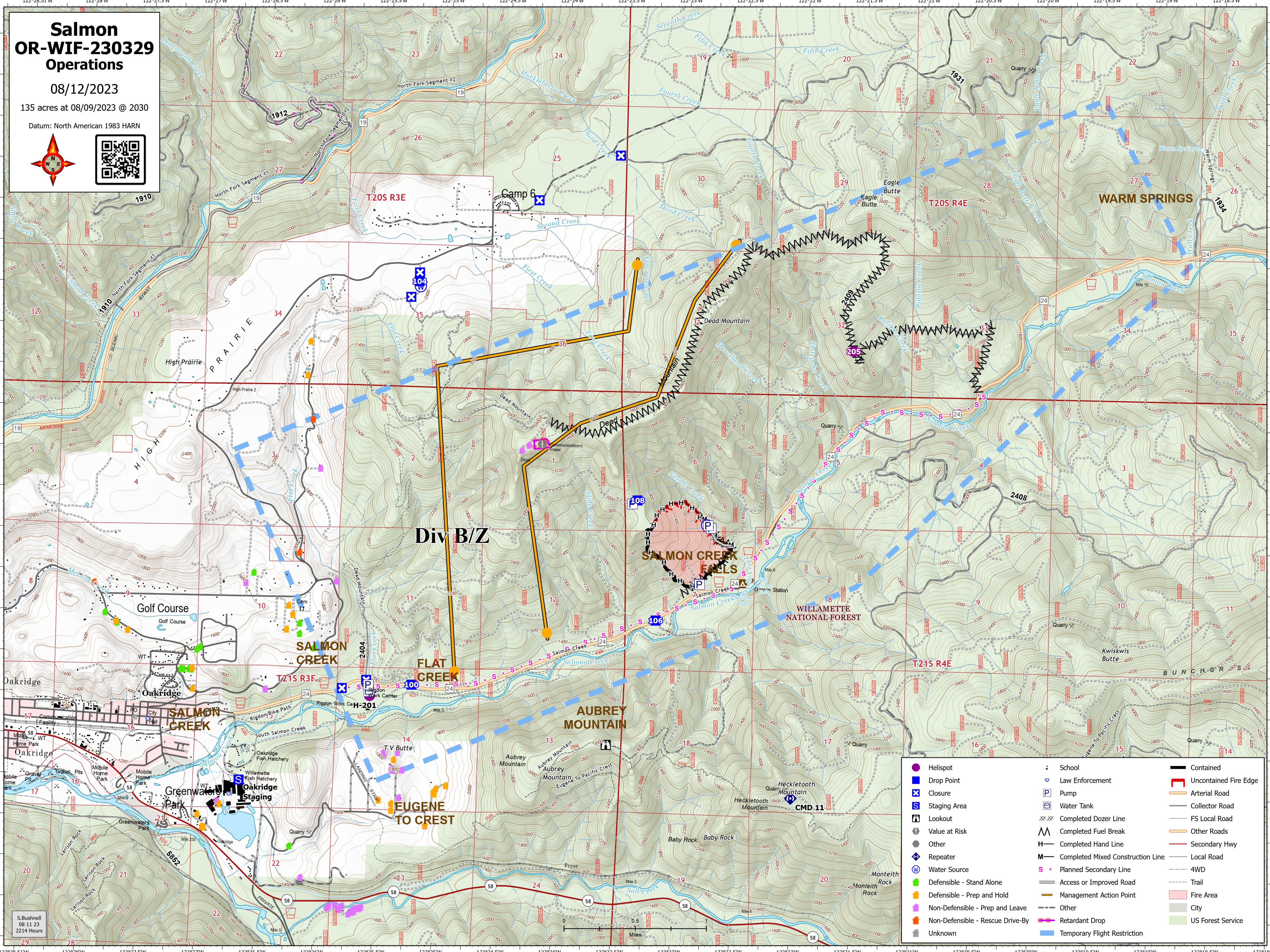


Salmon OR-WIF-230329 Operations

08/12/2023

135 acres at 08/09/2023 @ 2030

Datum: North American 1983 HARN



Div B/Z

SALMON CREEK FALLS

WARM SPRINGS

FLAT CREEK

AUBREY MOUNTAIN

EUGENE TO CREST

- | | | | | | | | | | | | | | | | | | | | | | | | | | | | | | |
|----------------------|----------------------|---------------------|-----------------------------------|-------------------------|-------------------------|-------|----------------|------------------------------|--------------------------|----------------------------|---------------------------------|----------------------------------|----------------|----------------|-----------------|----------------|----------------|----------------|-----------------------|----------------|----------------|----------------|----------------|----------------|----------------|----------------|----------------|----------------|-------------------|
| Helispot | Drop Point | Closure | Staging Area | Lookout | Value at Risk | Other | Repeater | Water Source | Defensible - Stand Alone | Defensible - Prep and Hold | Non-Defensible - Prep and Leave | Non-Defensible - Rescue Drive-By | Unknown | School | Law Enforcement | Pump | Water Tank | Contained | Uncontained Fire Edge | Arterial Road | Collector Road | FS Local Road | Other Roads | Secondary Hwy | Local Road | 4WD | Trail | Fire Area | US Forest Service |
| Completed Dozer Line | Completed Fuel Break | Completed Hand Line | Completed Mixed Construction Line | Access or Improved Road | Management Action Point | Other | Retardant Drop | Temporary Flight Restriction | Retardant Drop | Retardant Drop | Retardant Drop | Retardant Drop | Retardant Drop | Retardant Drop | Retardant Drop | Retardant Drop | Retardant Drop | Retardant Drop | Retardant Drop | Retardant Drop | Retardant Drop | Retardant Drop | Retardant Drop | Retardant Drop | Retardant Drop | Retardant Drop | Retardant Drop | Retardant Drop | Retardant Drop |

S. Bushnell
08 11 23
2214 Hours