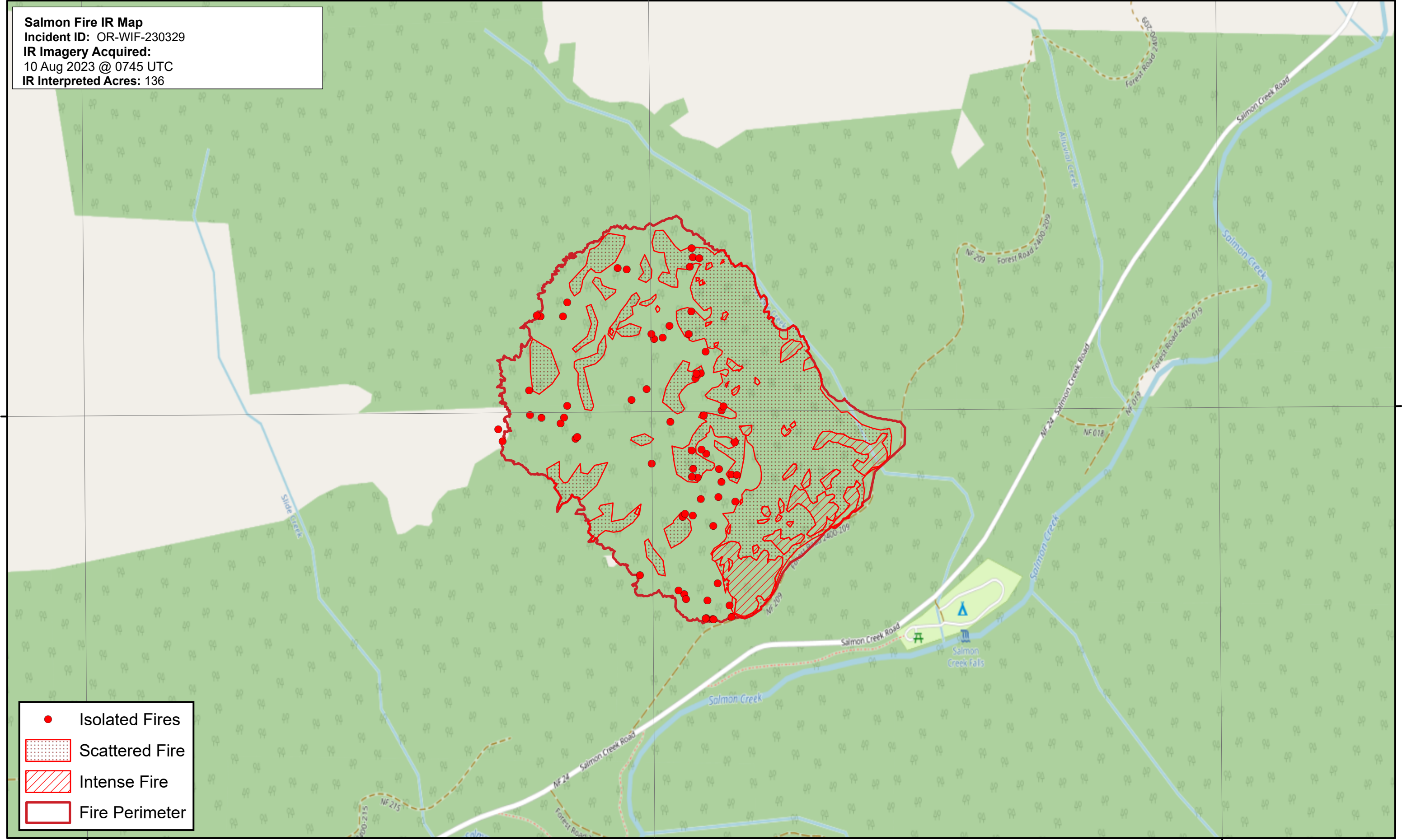




122°24'0"W

122°22'0"W

Salmon Fire IR Map
 Incident ID: OR-WIF-230329
 IR Imagery Acquired:
 10 Aug 2023 @ 0745 UTC
 IR Interpreted Acres: 136



43°46'0"N

43°46'0"N

- Isolated Fires
- Scattered Fire
- Intense Fire
- Fire Perimeter

122°24'0"W

122°22'0"W

