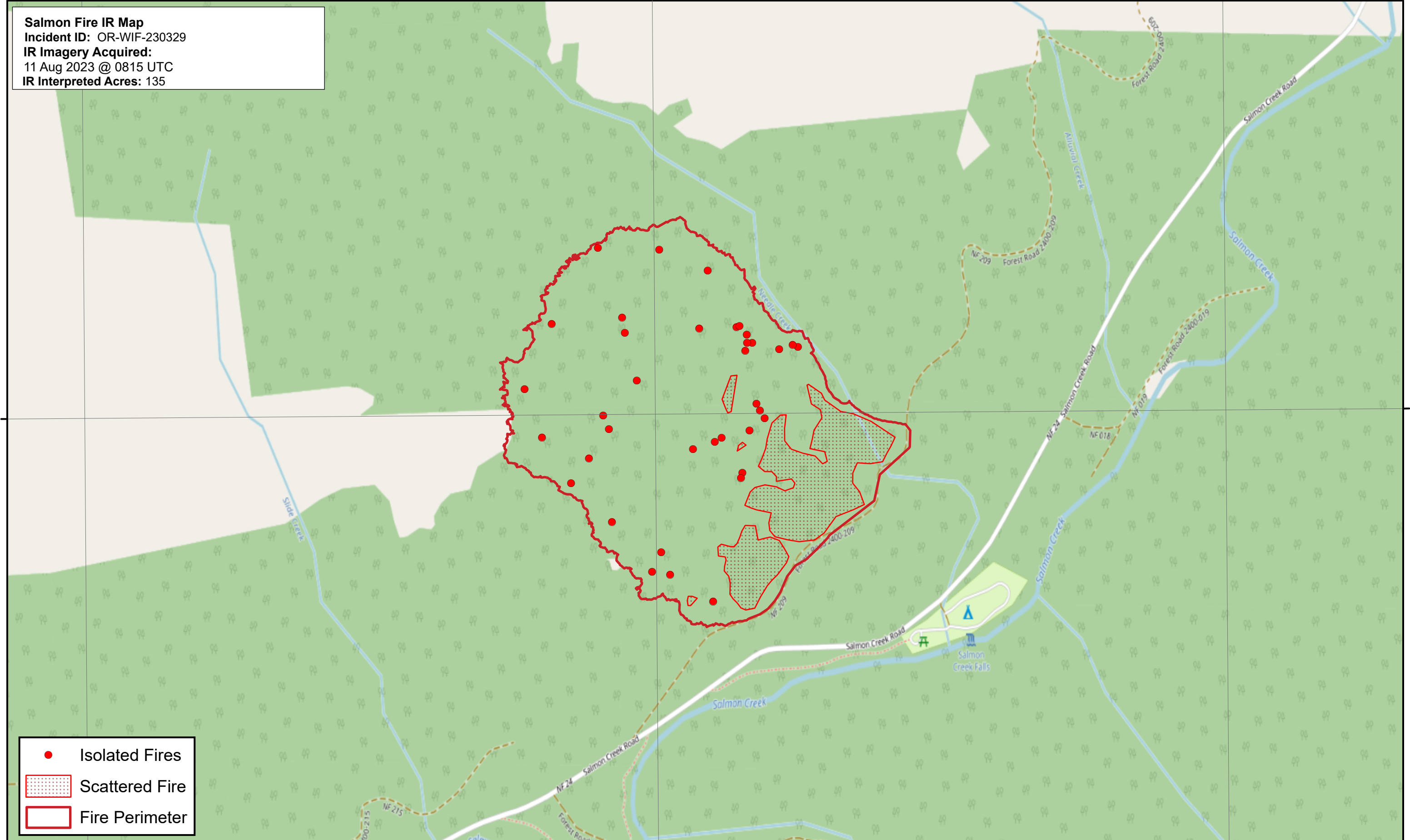




122°24'0"W

122°22'0"W

**Salmon Fire IR Map**  
 Incident ID: OR-WIF-230329  
 IR Imagery Acquired:  
 11 Aug 2023 @ 0815 UTC  
 IR Interpreted Acres: 135



43°46'0"N

43°46'0"N

- Isolated Fires
- Scattered Fire
- Fire Perimeter

122°24'0"W

122°22'0"W

