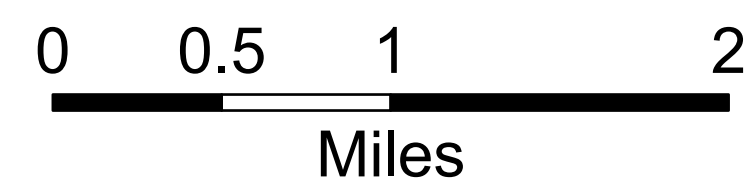


# Air Operations

Wiley Creek  
ORWIF-230338

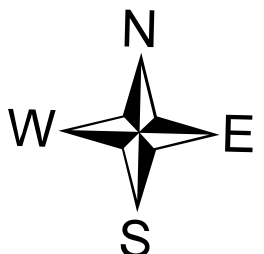
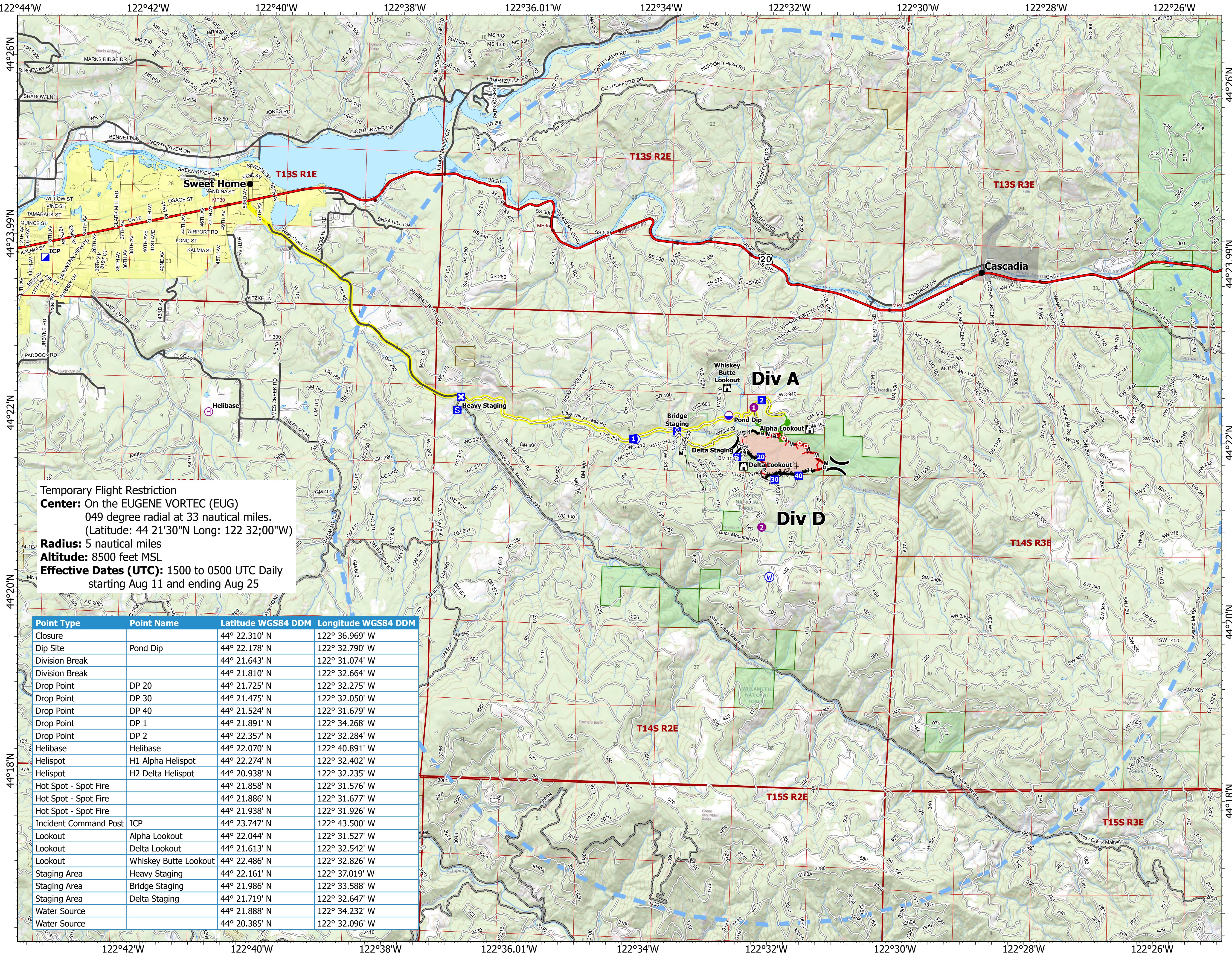
245 acres at August 14, 2023 @ 2100



- Dip Site
- Helispot
- Helibase
- Division Break
- Incident Command Post
- Drop Point
- Closure
- Staging Area
- Lookout
- Hot Spot - Spot Fire
- Water Source
- Wildfire Daily Fire Perimeter
- Completed Dozer Line
- Completed Hand Line
- Completed Mixed Construction Line
- Completed Road as Line
- Access or Improved Road
- Escape Route
- Temporary Flight Restriction
- Contained
- Uncontained
- Travel Route
- Highway
- Paved
- Mainline Rd
- All weather
- In UGB
- United States Forest Service
- Bureau of Land Management
- Oregon Parks and Rec Department
- City Limits

Temporary Flight Restriction  
**Center:** On the EUGENE VORTEC (EUG)  
 049 degree radial at 33 nautical miles.  
 (Latitude: 44 21'30"N Long: 122 32;00"W)  
**Radius:** 5 nautical miles  
**Altitude:** 8500 feet MSL  
**Effective Dates (UTC):** 1500 to 0500 UTC Daily  
 starting Aug 11 and ending Aug 25

Point Type	Point Name	Latitude WGS84 DDM	Longitude WGS84 DDM
Closure		44° 22.310' N	122° 36.969' W
Dip Site	Pond Dip	44° 22.178' N	122° 32.790' W
Division Break		44° 21.643' N	122° 31.074' W
Division Break		44° 21.810' N	122° 32.664' W
Drop Point	DP 20	44° 21.725' N	122° 32.275' W
Drop Point	DP 30	44° 21.475' N	122° 32.050' W
Drop Point	DP 40	44° 21.524' N	122° 31.679' W
Drop Point	DP 1	44° 21.891' N	122° 34.268' W
Drop Point	DP 2	44° 22.357' N	122° 32.284' W
Helibase	Helibase	44° 22.070' N	122° 40.891' W
Helispot	H1 Alpha Helispot	44° 22.274' N	122° 32.402' W
Helispot	H2 Delta Helispot	44° 20.938' N	122° 32.235' W
Hot Spot - Spot Fire		44° 21.858' N	122° 31.576' W
Hot Spot - Spot Fire		44° 21.886' N	122° 31.677' W
Hot Spot - Spot Fire		44° 21.938' N	122° 31.926' W
Incident Command Post	ICP	44° 23.747' N	122° 43.500' W
Lookout	Alpha Lookout	44° 22.044' N	122° 31.527' W
Lookout	Delta Lookout	44° 21.613' N	122° 32.542' W
Lookout	Whiskey Butte Lookout	44° 22.486' N	122° 32.826' W
Staging Area	Heavy Staging	44° 22.161' N	122° 37.019' W
Staging Area	Bridge Staging	44° 21.986' N	122° 33.588' W
Staging Area	Delta Staging	44° 21.719' N	122° 32.647' W
Water Source		44° 21.888' N	122° 34.232' W
Water Source		44° 20.385' N	122° 32.096' W



Download Maps