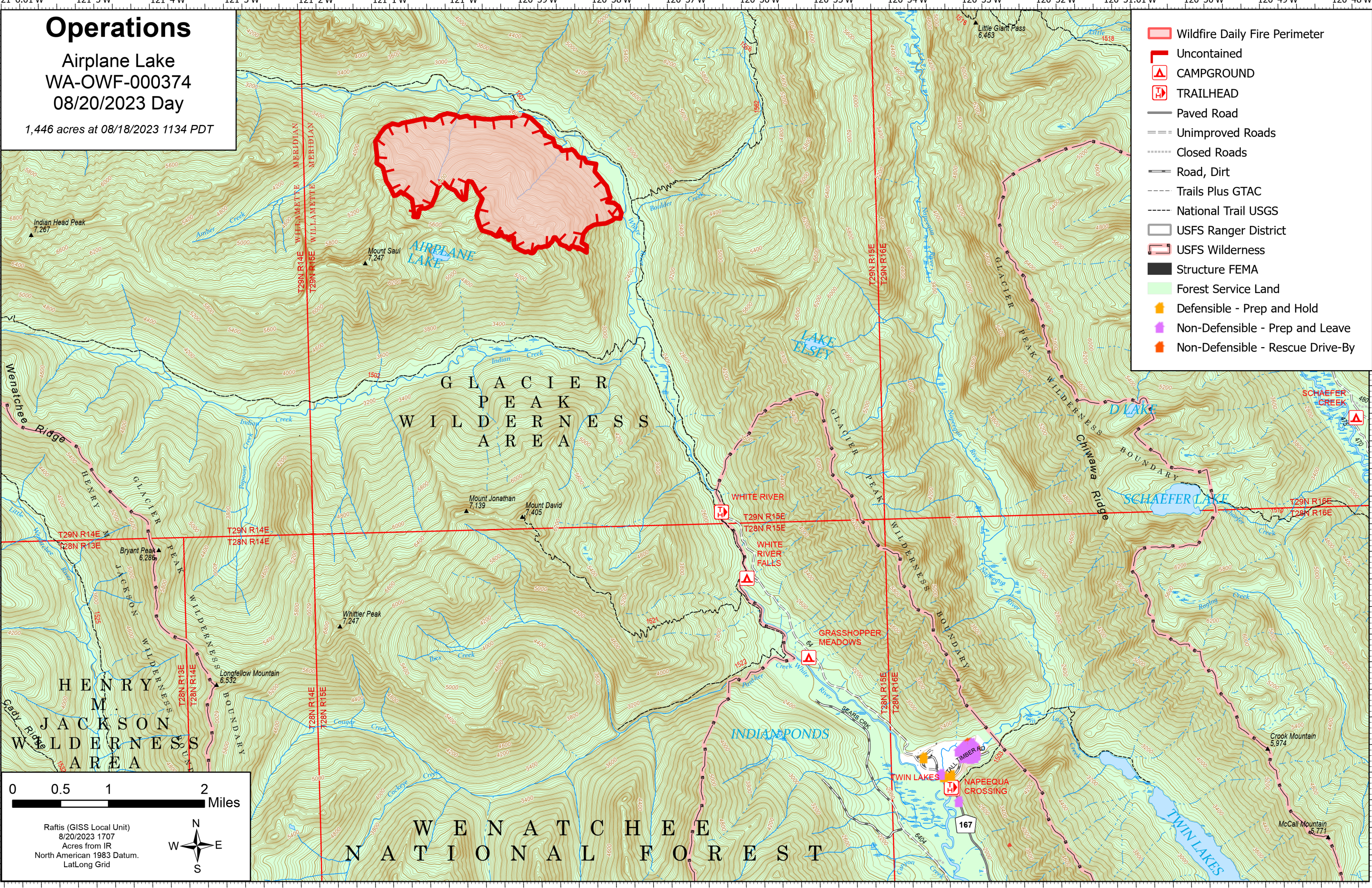


Operations

Airplane Lake
WA-OWF-000374
08/20/2023 Day

1,446 acres at 08/18/2023 1134 PDT

- Wildfire Daily Fire Perimeter
- Uncontained
- CAMPGROUND
- TRAILHEAD
- Paved Road
- Unimproved Roads
- Closed Roads
- Road, Dirt
- Trails Plus GTAC
- National Trail USGS
- USFS Ranger District
- USFS Wilderness
- Structure FEMA
- Forest Service Land
- Defensible - Prep and Hold
- Non-Defensible - Prep and Leave
- Non-Defensible - Rescue Drive-By



0 0.5 1 2 Miles

Raftis (GISS Local Unit)
8/20/2023 1707
Acres from IR
North American 1983 Datum.
LatLong Grid

WENATCHEE
NATIONAL FOREST

GLACIER
PEAK
WILDERNESS
AREA

HENRY
M.
JACKSON
WILDERNESS
AREA

Menatchee
Ridge

Indian Head Peak
7,287

Mount Saul
7,247

Little Giant Pass
6,463

Glacier Peak
7,700

121°06.5'W 121°5.5'W 121°4.5'W 121°3.5'W 121°2.5'W 121°1.5'W 121°0.5'W 121°W 120°59'W 120°58'W 120°57'W 120°56'W 120°55'W 120°54'W 120°53'W 120°52'W 120°51.01'W 120°50'W 120°49'W

48°01.49'N 48°1'N 48°0.5'N 48°N 47°59.5'N 47°59'N 47°58.5'N 47°58'N 47°57.5'N 47°57'N 47°56.5'N 47°56'N 47°55.5'N 47°55'N 47°54.5'N 47°54'N