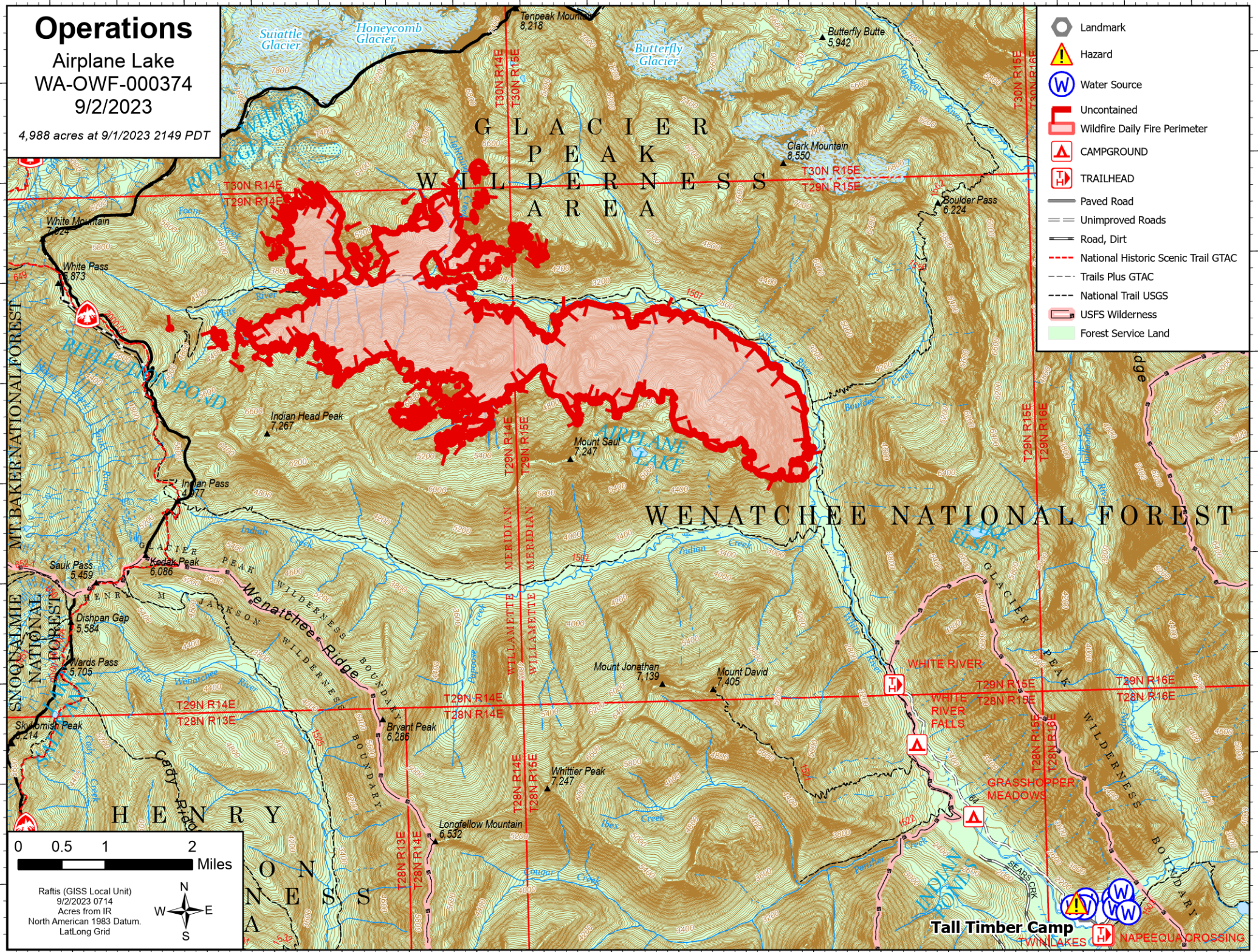


# Operations

Airplane Lake  
WA-OWF-000374  
9/2/2023

4,988 acres at 9/1/2023 2149 PDT

- Landmark
- Hazard
- Water Source
- Uncontained
- Wildfire Daily Fire Perimeter
- CAMPGROUND
- TRAILHEAD
- Paved Road
- Unimproved Roads
- Road, Dirt
- National Historic Scenic Trail GTAC
- Trails Plus GTAC
- National Trail USGS
- USFS Wilderness
- Forest Service Land



0 0.5 1 2 Miles

Raftis (GISS Local Unit)  
9/2/2023 0714  
Acres from IR  
North American 1983 Datum,  
Lat/Long Grid

Tail Timber Camp  
TWIN LAKES  
NAPEEQUA CROSSING