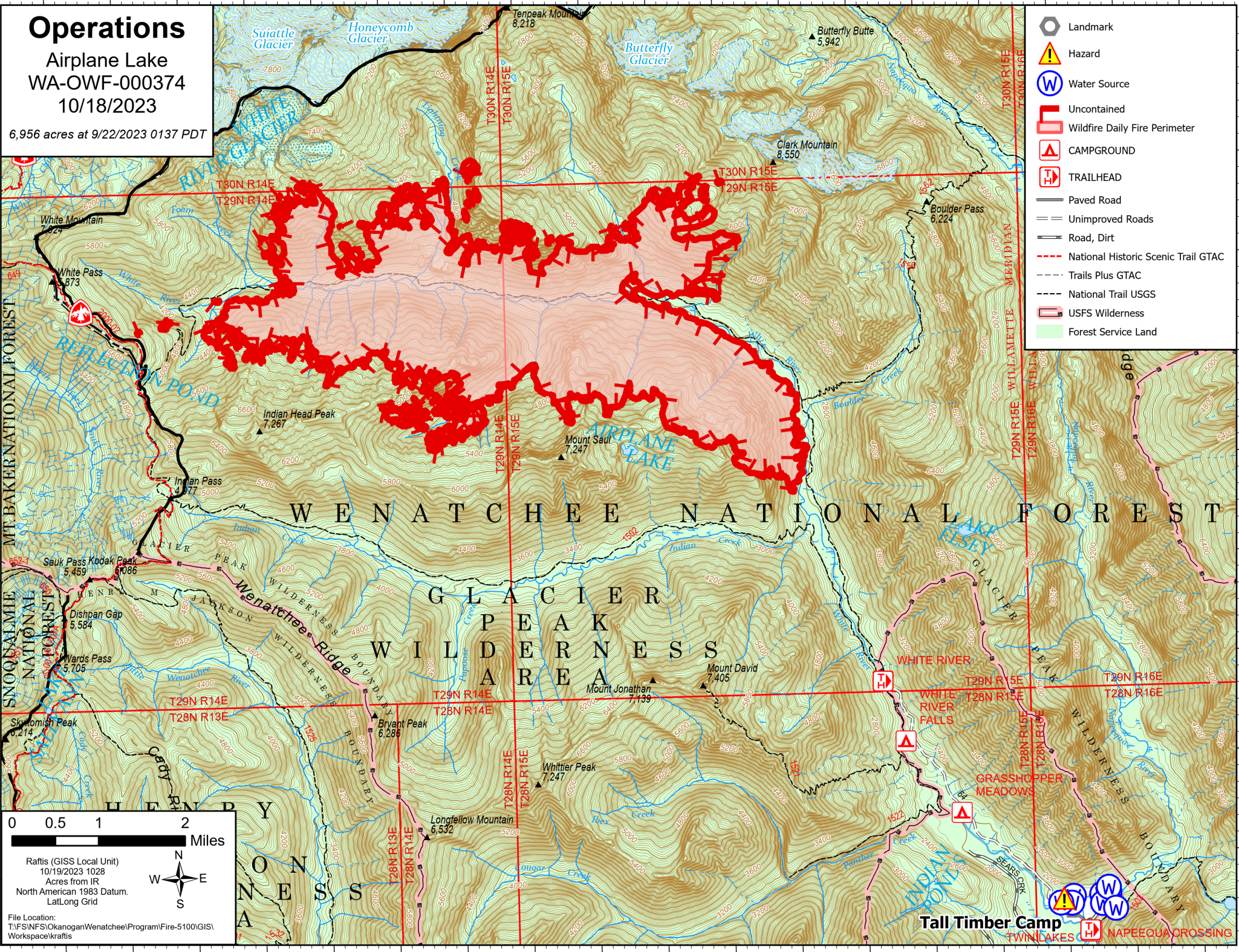


Operations

Airplane Lake
WA-OWF-000374
10/18/2023

6,956 acres at 9/22/2023 0137 PDT

- Landmark
- Hazard
- Water Source
- Uncontained
- Wildfire Daily Fire Perimeter
- CAMPGROUND
- TRAILHEAD
- Paved Road
- Unimproved Roads
- Road, Dirt
- National Historic Scenic Trail GTAC
- Trails Plus GTAC
- National Trail USGS
- USFS Wilderness
- Forest Service Land



0 0.5 1 2 Miles

Raftis (GISS Local Unit)
10/19/2023 1028
Acres from IR
North American 1983 Datum.
Lat/Long Grid

File Location:
T:\FS\NFS\Okanogan\Wenatchee\Program\Fire-5100\GIS\Workspace\krafis

Tall Timber Camp
TWIN LAKES
NAPEEQUA CROSSING