


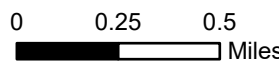
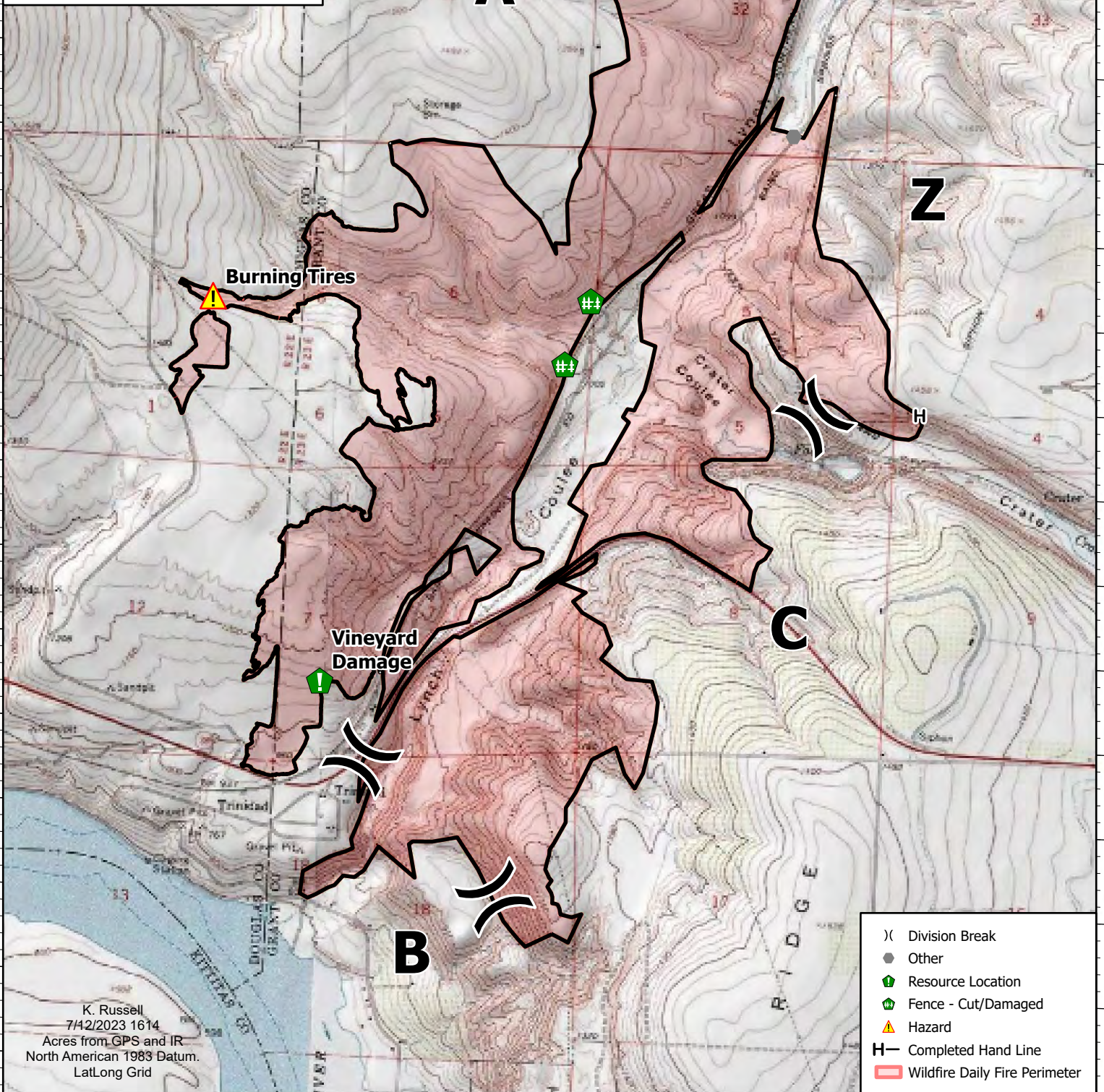
120°1.5'W 120°1'W 120°0.5'W 120°W 119°59.5'W 119°59'W 119°58.51'W 119°58'W 119°57.5'W 119°57'W

47°17'N 47°16.49'N 47°16'N 47°15.5'N 47°15'N 47°14.5'N 47°14'N 47°13.5'N 47°13'N

IAP
 Baird Springs
 WASPD-000401
 07/12/2023 Day



2300 acres at 07/12/2023 1420 hrs.

- X Division Break
- Other
- 🏠 Resource Location
- 🏠 Fence - Cut/Damaged
- ⚠ Hazard
- H Completed Hand Line
- 🔴 Wildfire Daily Fire Perimeter

K. Russell
 7/12/2023 1614
 Acres from GPS and IR
 North American 1983 Datum.
 LatLong Grid

120°1'W 120°0.5'W 120°W 119°59.5'W 119°59'W 119°58.51'W 119°58'W 119°57.5'W 119°57'W