

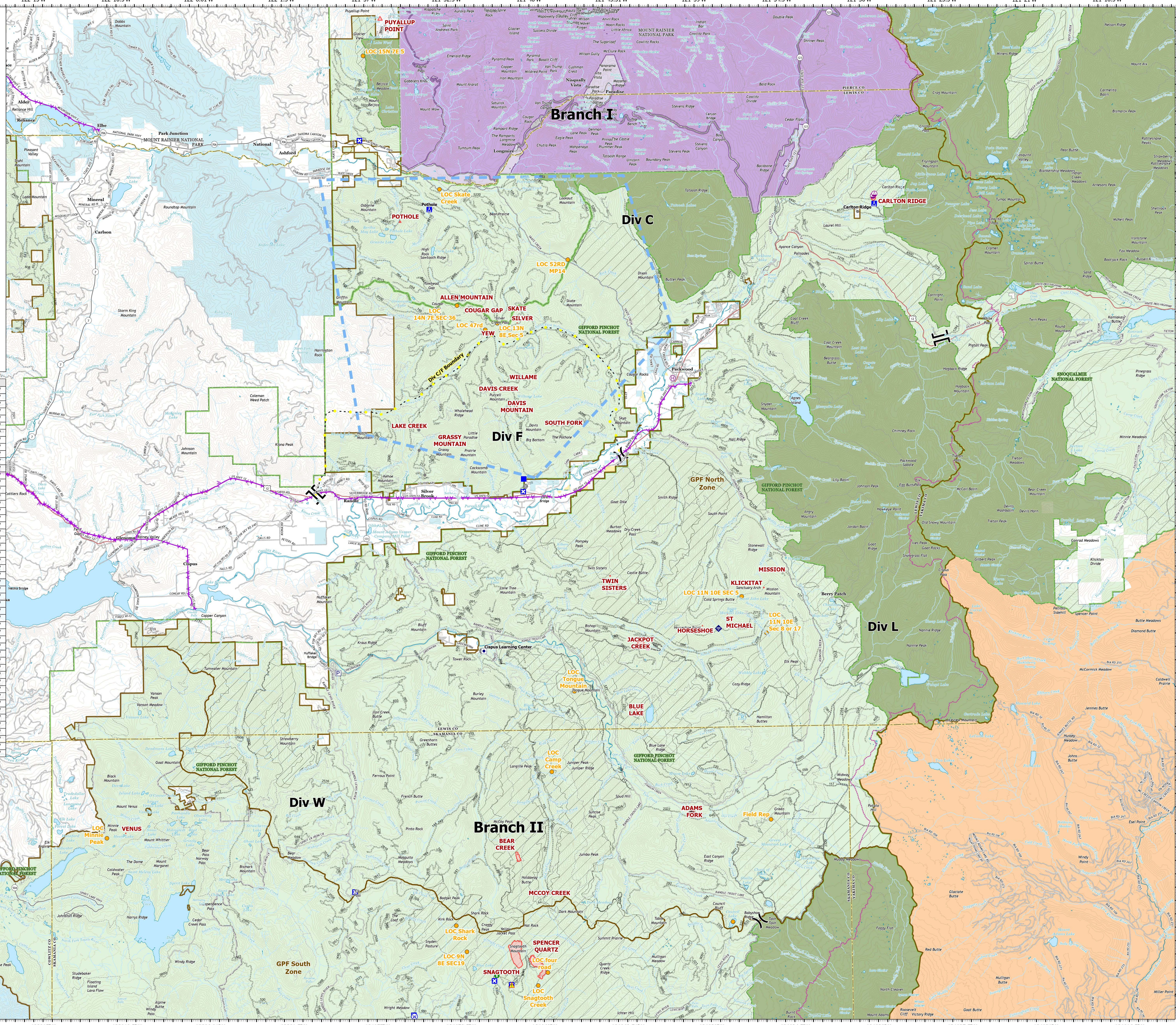
Air Operations

Cowlitz Complex
WA-GPF-001297
8/30/2023



- Helibase
- Sling Site
- Division Break
- Branch Break
- Drop Point
- Closure
- Camp
- Other
- Landmark
- Bridge
- Hazard Tree
- Internet Access
- Hazard
- Water Source
- Smoke Reports
- Other Property
- Pump
- Completed Dozer Line
- Planned Hand Line
- Access or Improved Road
- Highlighted Feature
- Other
- Aerial Hazard
- Temporary Flight Restriction
- Pacific Crest Trail
- Trail
- Closed Road
- High Clearance Road
- Passenger Cars Road
- Secondary Hwy
- Local Connector
- Local Road
- Wildfire Daily Fire Perimeter
- Fire Management Zone
- Roadless Area
- Forest Service Wilderness
- National Park Service Wilderness
- State or Territory
- County or Equivalent
- Bureau of Indian Affairs (BIA)
- Bureau of Land Management (BLM)
- National Park Service (NPS)
- State
- US Forest Service (USFS)
- Private or Undetermined

Incident Name	Type	Latitude	Longitude
ADAMS FORK	WILDFIRE	46° 20.151' N	121° 39.861' W
ALLEN MOUNTAIN	WILDFIRE	46° 39.530' N	121° 51.628' W
BEAR CREEK	WILDFIRE	46° 18.554' N	121° 49.286' W
BLUE LAKE	WILDFIRE	46° 24.039' N	121° 42.771' W
CARLTON RIDGE	WILDFIRE	46° 43.018' N	121° 25.429' W
CLEAR CREEK	WILDFIRE	46° 12.434' N	121° 59.418' W
COUGAR GAP	WILDFIRE	46° 39.041' N	121° 50.706' W
DAVIS CREEK	WILDFIRE	46° 36.103' N	121° 49.971' W
DAVIS MOUNTAIN	WILDFIRE	46° 35.427' N	121° 48.988' W
DEER CREEK	WILDFIRE	46° 47.710' N	121° 56.661' W
GRASSY MOUNTAIN	WILDFIRE	46° 34.194' N	121° 52.648' W
HEMLOCK	WILDFIRE	46° 12.515' N	121° 58.712' W
HORSESHOE	WILDFIRE	46° 27.121' N	121° 39.116' W
JACKPOT CREEK	WILDFIRE	46° 28.517' N	121° 42.480' W
KLUCKITAT	WILDFIRE	46° 28.510' N	121° 35.762' W
LAKE CREEK	WILDFIRE	46° 34.760' N	121° 54.838' W
MCCOY CREEK	WILDFIRE	46° 17.230' N	121° 47.621' W
MISSION	WILDFIRE	46° 29.187' N	121° 35.326' W
POTHOLE	WILDFIRE	46° 42.385' N	121° 55.185' W
PUYALLUP POINT	WILDFIRE	46° 49.980' N	121° 56.125' W
SILVER	WILDFIRE	46° 38.550' N	121° 48.904' W
SKATE	WILDFIRE	46° 39.088' N	121° 48.893' W
SNAGTOOTH	WILDFIRE	46° 14.996' N	121° 49.459' W
SOUTH FORK	WILDFIRE	46° 34.793' N	121° 46.459' W
SPENCER QUARTZ	WILDFIRE	46° 14.489' N	121° 48.391' W
ST MICHAEL	WILDFIRE	46° 27.545' N	121° 37.766' W
TWIN SISTERS	WILDFIRE	46° 29.040' N	121° 44.071' W
VENUS	WILDFIRE	46° 19.656' N	122° 10.441' W
WILLAME	WILDFIRE	46° 36.523' N	121° 48.609' W
YEW	WILDFIRE	46° 38.180' N	121° 50.489' W
LOC 11N 10E SEC 5	SMOKE CHECK	46° 28.192' N	121° 36.967' W
LOC 11N 10E Sec 8 or 17	SMOKE CHECK	46° 26.821' N	121° 35.669' W
LOC 13N 8E SEC 5	SMOKE CHECK	46° 38.550' N	121° 49.980' W
LOC 14N 7E SEC 36	SMOKE CHECK	46° 39.229' N	121° 52.154' W
LOC 15N 7E 5	SMOKE CHECK	46° 40.610' N	121° 52.080' W
LOC 4431 Riverside Drive	SMOKE CHECK	46° 38.995' N	121° 34.263' W
LOC 47rd	SMOKE CHECK	46° 38.310' N	121° 50.640' W
LOC 52RD MP14	SMOKE CHECK	46° 40.883' N	121° 46.101' W
LOC 7N 10E SEC1	SMOKE CHECK	46° 07.200' N	121° 30.000' W
LOC 9N 8E SEC19	SMOKE CHECK	46° 15.068' N	121° 52.117' W
LOC Camp Creek	SMOKE CHECK	46° 21.752' N	121° 47.393' W
LOC Council Lake	SMOKE CHECK	46° 16.037' N	121° 37.742' W
LOC Curly Creek	SMOKE CHECK	46° 03.452' N	121° 57.785' W
LOC four road	SMOKE CHECK	46° 14.250' N	121° 47.770' W
LOC Ice Caves	SMOKE CHECK	46° 59.790' N	121° 38.344' W
LOC Minnie Peak	SMOKE CHECK	46° 19.480' N	122° 11.460' W
LOC Pepper Creek	SMOKE CHECK	46° 06.120' N	121° 57.680' W
LOC Shark Rock	SMOKE CHECK	46° 16.050' N	121° 52.670' W
LOC Skate Creek	SMOKE CHECK	46° 43.586' N	121° 53.018' W
LOC Snagtooth Creek	SMOKE CHECK	46° 13.770' N	121° 48.300' W
LOC Tongue Mountain	SMOKE CHECK	46° 24.746' N	121° 46.106' W
Field Rep	SMOKE CHECK	46° 19.841' N	121° 35.595' W



8/30/2023 0004
Acres from IR and GPS
North American 1983 Datum, Lat/Long Grid