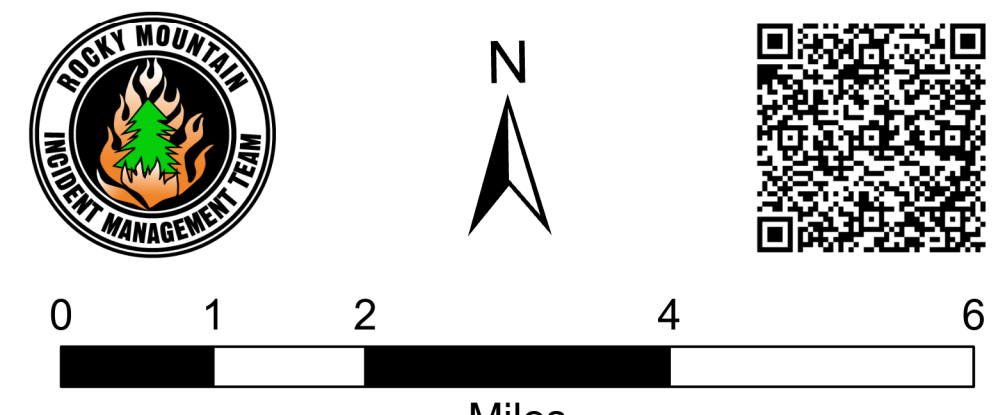


Air Operations

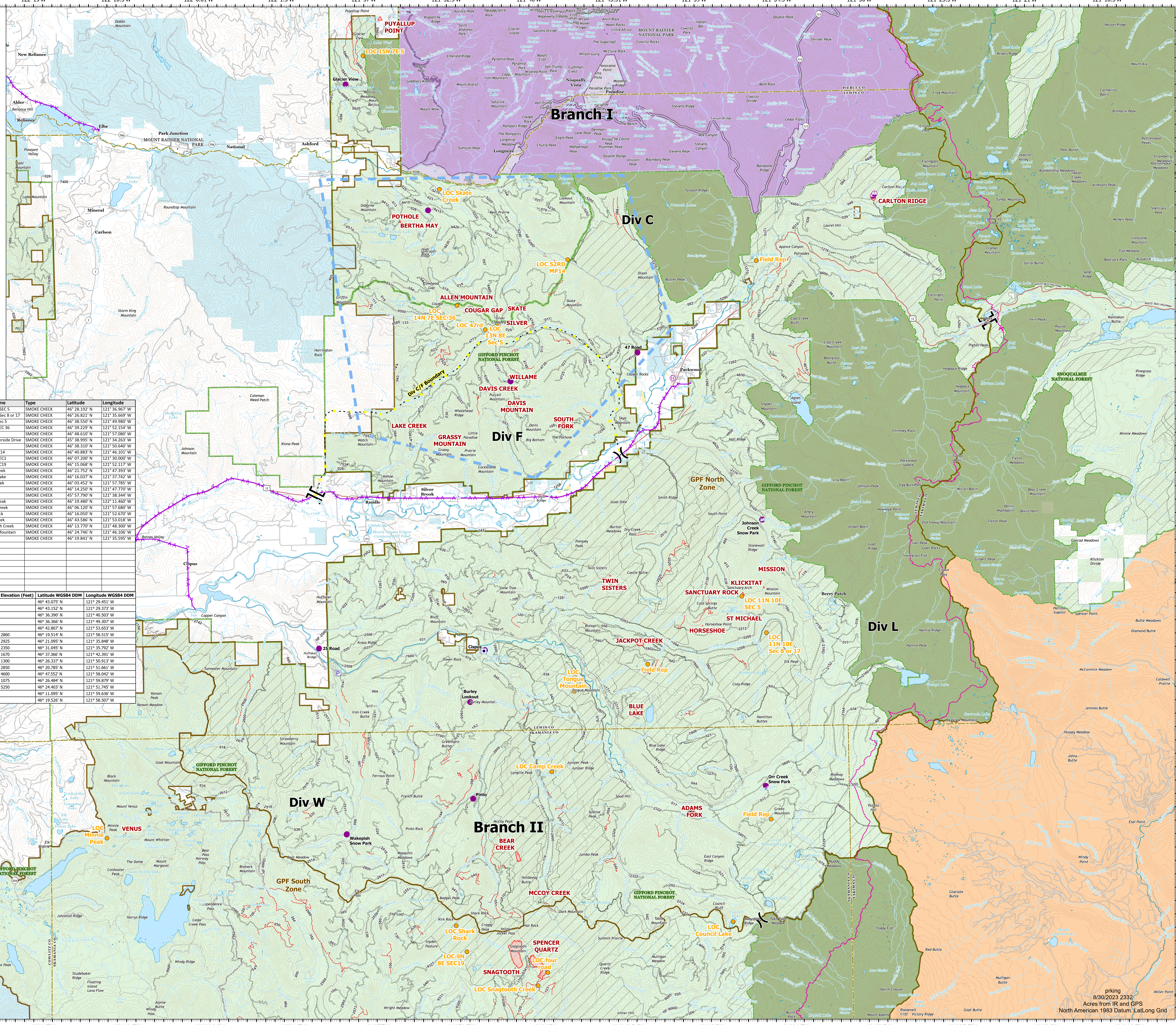
Cowlitz Complex

WA-GPF-001297

8/31/2023



- Helispot
- Helibase
- Sling Site
- Division Break
- Branch Break
- Smoke Reports
- Other Property
- Pump
- Completed Dozer Line
- Planned Hand Line
- Access or Improved Road
- Highlighted Feature
- Other
- Aerial Hazard
- Temporary Flight Restriction
- Trail
- Highway
- Local Road
- Wildfire Daily Fire Perimeter
- Fire Management Zone
- Roadless Area
- Forest Service Wilderness
- National Park Service Wilderness
- State or Territory
- County or Equivalent
- Bureau of Indian Affairs (BIA)
- Bureau of Land Management (BLM)
- National Park Service (NPS)
- State
- US Forest Service (USFS)
- Private or Undetermined
- Pacific Crest National Scenic Trail
- Open Road
- High Clearance Road
- Closed Road
- Decommissioned Road
- Planned Road



Incident Name	Type	Latitude	Longitude	Incident Name	Type	Latitude	Longitude
ADAMS FORK	WILDFIRE	46° 20.151' N	121° 39.861' W	SMOKE CHECK	SMOKE CHECK	46° 28.192' N	121° 36.967' W
ALLEN MOUNTAIN	WILDFIRE	46° 39.530' N	121° 51.628' W	LOC 11N 10E SEC 5	SMOKE CHECK	46° 26.821' N	121° 35.669' W
BEAR CREEK	WILDFIRE	46° 38.584' N	121° 49.286' W	LOC 13N 8E SEC 5	SMOKE CHECK	46° 38.550' N	121° 49.980' W
BLUE LAKE	WILDFIRE	46° 24.020' N	121° 42.771' W	LOC 14N 7E SEC 36	SMOKE CHECK	46° 39.229' N	121° 52.154' W
CARLTON RIDGE	WILDFIRE	46° 43.018' N	121° 29.420' W	SMOKE CHECK	SMOKE CHECK	46° 48.610' N	121° 57.089' W
CLEAR CREEK	WILDFIRE	46° 32.434' N	121° 59.418' W	LOC 4431 Riverside Drive	SMOKE CHECK	45° 38.995' N	121° 34.263' W
COUGAR GAP	WILDFIRE	46° 39.041' N	121° 50.706' W	LOC 47rd	SMOKE CHECK	46° 38.310' N	121° 50.640' W
DAVIS CREEK	WILDFIRE	46° 36.103' N	121° 49.971' W	LOC 52RD MP14	SMOKE CHECK	46° 40.883' N	121° 46.101' W
DAVIS MOUNTAIN	WILDFIRE	46° 35.427' N	121° 48.988' W	SMOKE CHECK	SMOKE CHECK	46° 07.200' N	121° 30.000' W
DEER CREEK	WILDFIRE	46° 47.727' N	121° 56.661' W	LOC 7N 10E SEC 17	SMOKE CHECK	46° 15.068' N	121° 53.117' W
GRASSY MOUNTAIN	WILDFIRE	46° 34.194' N	121° 52.648' W	LOC Camp Creek	SMOKE CHECK	46° 21.752' N	121° 47.393' W
HEMLOCK	WILDFIRE	46° 32.515' N	121° 58.712' W	LOC Council Lake	SMOKE CHECK	46° 16.037' N	121° 37.742' W
HORSESHOE	WILDFIRE	46° 27.121' N	121° 39.116' W	LOC Curly Creek	SMOKE CHECK	46° 03.452' N	121° 57.785' W
JACKPOT CREEK	WILDFIRE	46° 26.517' N	121° 42.480' W	LOC four road	SMOKE CHECK	46° 14.250' N	121° 47.770' W
KLIKITAT	WILDFIRE	46° 28.510' N	121° 35.762' W	LOC Ice Caves	SMOKE CHECK	45° 57.790' N	121° 38.344' W
LAKE CREEK	WILDFIRE	46° 34.760' N	121° 54.838' W	LOC Minnie Peak	SMOKE CHECK	46° 19.480' N	121° 11.460' W
MCCOY CREEK	WILDFIRE	46° 17.230' N	121° 47.621' W	LOC Pepper Creek	SMOKE CHECK	46° 06.120' N	121° 57.680' W
MISSION	WILDFIRE	46° 29.187' N	121° 35.326' W	LOC Shark Rock	SMOKE CHECK	46° 16.050' N	121° 52.670' W
POTHOLE	WILDFIRE	46° 43.385' N	121° 55.185' W	LOC Skate Creek	SMOKE CHECK	46° 43.586' N	121° 53.018' W
PUYALLUP POINT	WILDFIRE	46° 49.980' N	121° 56.125' W	LOC Snagtooth Creek	SMOKE CHECK	46° 13.770' N	121° 48.300' W
SILVER	WILDFIRE	46° 38.550' N	121° 48.904' W	LOC Tongue Mountain	SMOKE CHECK	46° 24.740' N	121° 46.106' W
SKATE	WILDFIRE	46° 39.088' N	121° 48.893' W	Field Rep	SMOKE CHECK	46° 19.841' N	121° 35.595' W
SNAGTOOTH	WILDFIRE	46° 34.996' N	121° 49.450' W				
SOUTH FORK	WILDFIRE	46° 34.793' N	121° 46.459' W				
SPENCER QUARTZ	WILDFIRE	46° 14.499' N	121° 48.291' W				
ST MICHAEL	WILDFIRE	46° 27.545' N	121° 37.766' W				
TWIN SISTERS	WILDFIRE	46° 29.040' N	121° 44.071' W				
WILLAME	WILDFIRE	46° 36.523' N	121° 48.609' W				
YEW	WILDFIRE	46° 38.180' N	121° 50.489' W				

FC Point Type	Label	Comments	Elevation (Feet)	Latitude WGS84 DDM	Longitude WGS84 DDM
Sling Site	Sling 2			46° 43.075' N	121° 29.451' W
Sling Site	Sling 1			46° 43.152' N	121° 29.573' W
Helibase				46° 36.390' N	121° 40.303' W
Helispot		Unapproved Helispot, Willame		46° 36.366' N	121° 49.307' W
Helispot		Proposed helispot from Matt Tollison Pothole IC Trainers		46° 42.807' N	121° 53.653' W
Helispot	Wakepish Snow Park	Type 1,2,3 Helicopter - off of 99 Rd	2860	46° 19.514' N	121° 58.515' W
Helispot	Orr Creek Snow Park	Type 1,2,3 Helicopter - off of 56 Rd	2925	46° 21.095' N	121° 35.848' W
Helispot	Johnson Creek Snow Park	Type 3 Helicopter - off of 21 Rd	2350	46° 21.045' N	121° 35.792' W
Helispot	47 Road	Type 3 Helicopter - 47 and 4710 road junction	1670	46° 27.260' N	121° 42.911' W
Helispot	Cispus	Type 2,3 Helicopter - Field at Cispus learning center	1300	46° 26.337' N	121° 50.913' W
Helispot	Pinto	Type 3 Helicopter - Gravel Pit off of 28 and 121 spur	2850	46° 20.785' N	121° 51.661' W
Helispot	Glacier View	Type 3 Helicopter	4600	46° 47.552' N	121° 58.042' W
Helispot	25 Road	Type 3 Helicopter	1075	46° 26.484' N	121° 59.679' W
Helispot	Burley Lookout	Type 3 Helicopter	5250	46° 34.483' N	121° 51.245' W
Helispot		Proposed Helispot in gravel pit. Needs approval		46° 11.095' N	121° 59.595' W
Helispot		Pre determined GPF helispot. Large paved parking area.		46° 19.526' N	121° 58.507' W