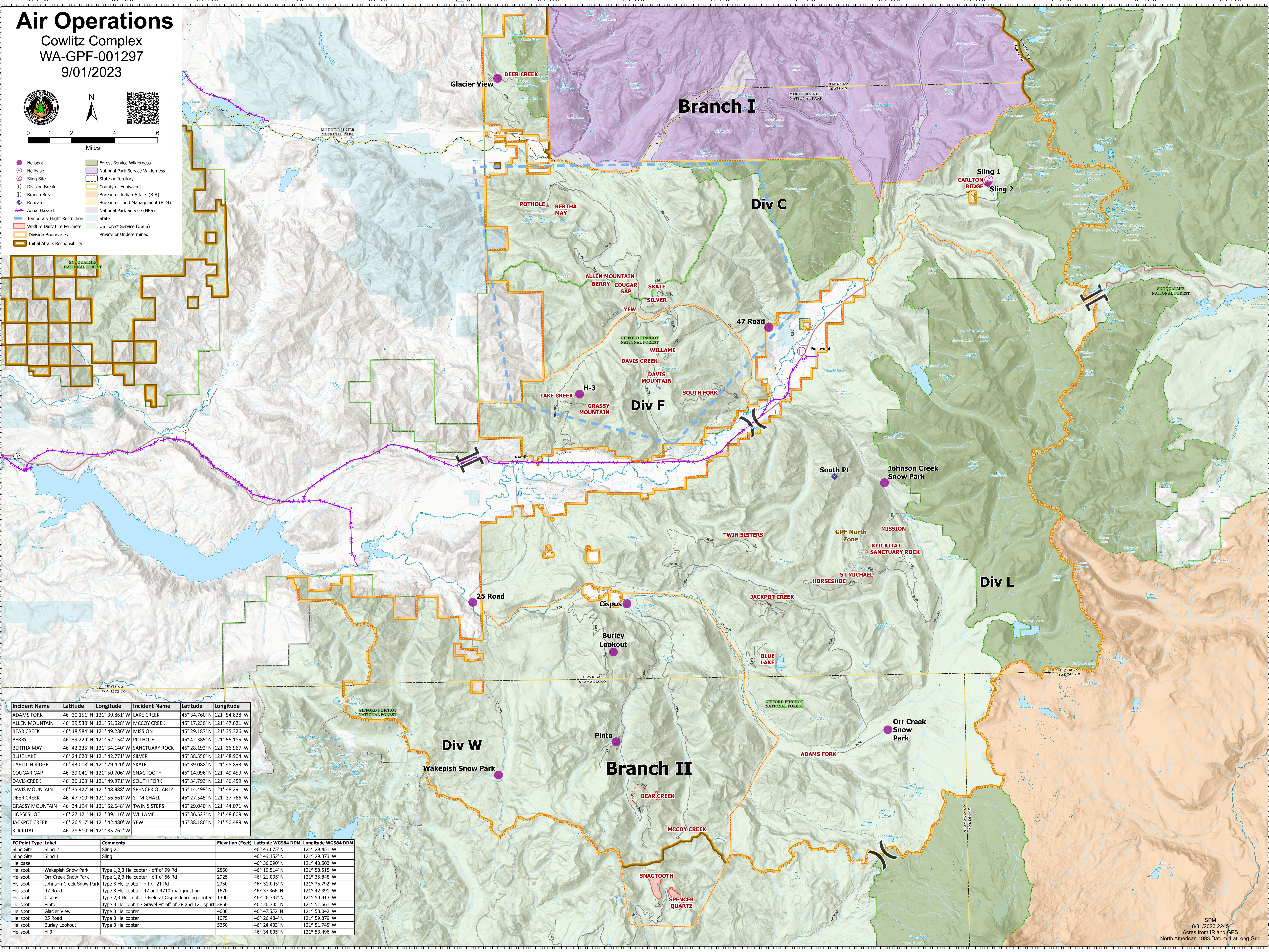


Air Operations

Cowlitz Complex
WA-GPF-001297
9/01/2023



- Helibase
- ⊕ Helibase
- ⊕ Sling Site
- ⊕ Division Break
- ⊕ Branch Break
- ⊕ Repeater
- ⊕ Aerial Hazard
- ⊕ Temporary Flight Restriction
- ⊕ Wildfire Daily Fire Perimeter
- ⊕ Division Boundaries
- ⊕ Initial Attack Responsibility
- Forest Service Wilderness
- National Park Service Wilderness
- State or Territory
- County or Equivalent
- Bureau of Indian Affairs (BIA)
- Bureau of Land Management (BLM)
- National Park Service (NPS)
- State
- US Forest Service (USFS)
- Private or Undetermined



| Incident Name | Latitude | Longitude | Incident Name | Latitude | Longitude |
|-----------------|---------------|----------------|----------------|---------------|----------------|
| ADAMS FORK | 46° 20.151' N | 121° 39.861' W | LAKE CREEK | 46° 34.760' N | 121° 54.838' W |
| ALLEN MOUNTAIN | 46° 39.530' N | 121° 51.628' W | MCCOY CREEK | 46° 17.230' N | 121° 47.621' W |
| BEAR CREEK | 46° 18.584' N | 121° 49.286' W | MISSION | 46° 29.187' N | 121° 35.326' W |
| BERRY | 46° 39.229' N | 121° 52.154' W | POTHOLE | 46° 42.385' N | 121° 55.185' W |
| BERTHA MAY | 46° 42.235' N | 121° 54.140' W | SANCTUARY ROCK | 46° 28.192' N | 121° 36.967' W |
| BLUE LAKE | 46° 24.020' N | 121° 42.771' W | SILVER | 46° 38.550' N | 121° 48.904' W |
| CARLTON RIDGE | 46° 43.018' N | 121° 29.420' W | SKATE | 46° 39.088' N | 121° 48.893' W |
| COUGAR GAP | 46° 39.041' N | 121° 50.706' W | SNAGTOOTH | 46° 14.996' N | 121° 49.459' W |
| DAVIS CREEK | 46° 36.103' N | 121° 49.971' W | SOUTH FORK | 46° 34.793' N | 121° 46.459' W |
| DAVIS MOUNTAIN | 46° 35.427' N | 121° 48.988' W | SPENCER QUARTZ | 46° 14.499' N | 121° 48.291' W |
| DEER CREEK | 46° 47.710' N | 121° 56.661' W | ST MICHAEL | 46° 27.545' N | 121° 37.766' W |
| GRASSY MOUNTAIN | 46° 34.194' N | 121° 52.648' W | TWIN SISTERS | 46° 29.040' N | 121° 44.071' W |
| HORSESHOE | 46° 27.121' N | 121° 39.116' W | WILLAME | 46° 36.523' N | 121° 48.609' W |
| JACKPOT CREEK | 46° 26.517' N | 121° 42.480' W | YEW | 46° 38.180' N | 121° 50.489' W |
| KLUCKITAT | 46° 28.510' N | 121° 35.762' W | | | |

| FC Point Type | Label | Comments | Elevation (Feet) | Latitude WGS84 DDM | Longitude WGS84 DDM |
|---------------|-------------------------|---|------------------|--------------------|---------------------|
| Sling Site | Sling 2 | | 46° 43.075' N | 121° 29.451' W | |
| Sling Site | Sling 1 | | 46° 43.152' N | 121° 29.373' W | |
| Helibase | | | 46° 36.390' N | 121° 40.503' W | |
| Helibase | Wakepish Snow Park | Type 1,2,3 Helicopter - off of 99 Rd | 2860 | 46° 19.514' N | 121° 58.515' W |
| Helibase | Orr Creek Snow Park | Type 1,2,3 Helicopter - off of 56 Rd | 2925 | 46° 21.095' N | 121° 35.848' W |
| Helibase | Johnson Creek Snow Park | Type 3 Helicopter - off of 21 Rd | 2350 | 46° 31.045' N | 121° 35.792' W |
| Helibase | 47 Road | Type 3 Helicopter - 47 and 4710 road junction | 1670 | 46° 37.366' N | 121° 42.391' W |
| Helibase | Cispus | Type 2,3 Helicopter - Field at Cispus learning center | 1300 | 46° 26.337' N | 121° 50.913' W |
| Helibase | Pinto | Type 3 Helicopter - Gravel Pit off of 28 and 121 spur | 2850 | 46° 20.785' N | 121° 51.661' W |
| Helibase | Glacier View | Type 3 Helicopter | 4600 | 46° 47.552' N | 121° 58.042' W |
| Helibase | 25 Road | Type 3 Helicopter | 1075 | 46° 26.484' N | 121° 59.879' W |
| Helibase | Burley Lookout | Type 3 Helicopter | 5250 | 46° 24.403' N | 121° 51.745' W |
| Helibase | H-3 | | | 46° 34.805' N | 121° 53.496' W |