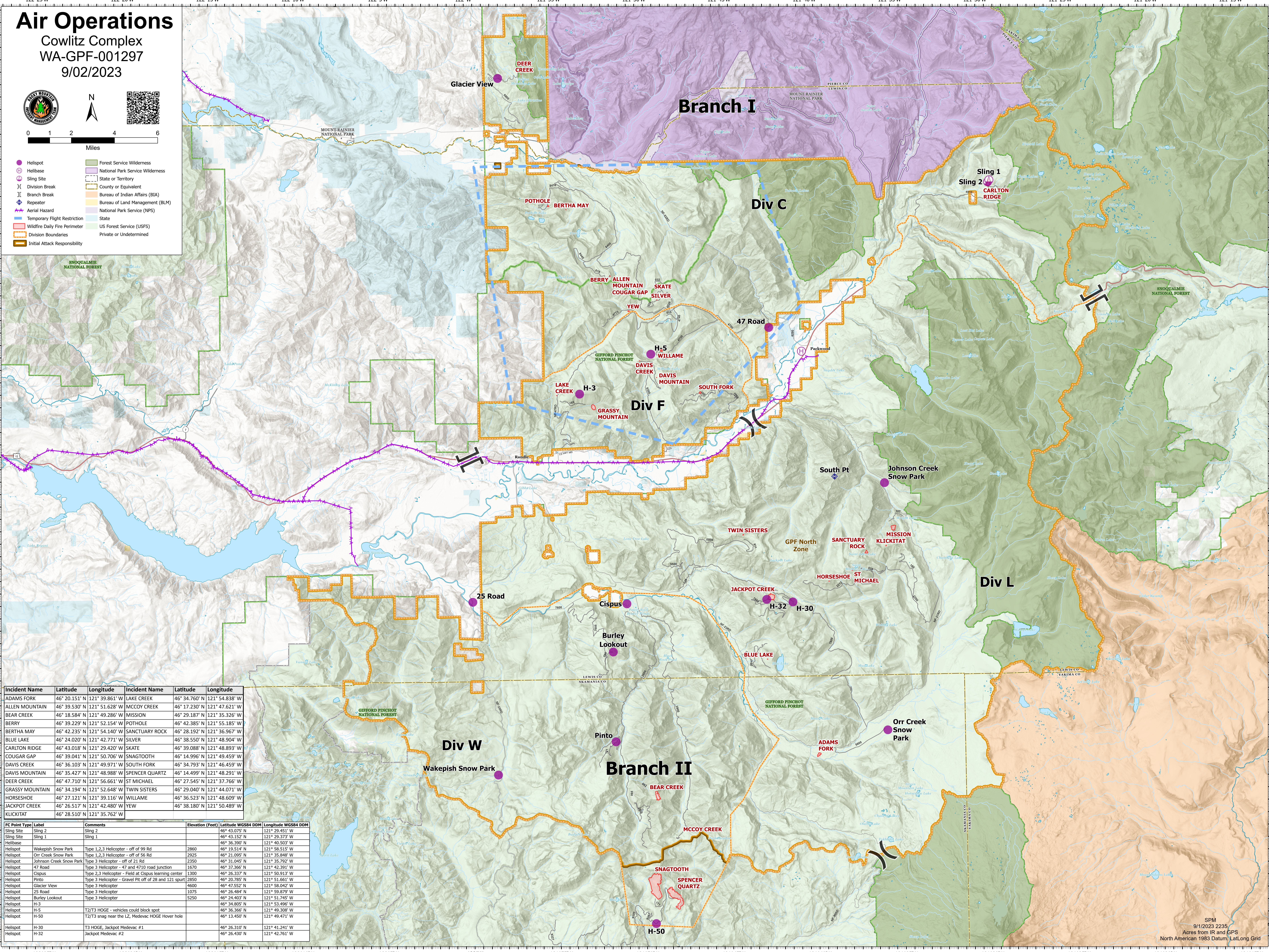


# Air Operations

Cowlitz Complex  
WA-GPF-001297  
9/02/2023



- Helispot
- ⊕ Helibase
- ⊖ Sling Site
- ⌋ Division Break
- ⌌ Branch Break
- ⊕ Repeater
- ⚡ Aerial Hazard
- ⬮ Temporary Flight Restriction
- ⬮ Wildfire Daily Fire Perimeter
- ⬮ Division Boundaries
- ⬮ Initial Attack Responsibility
- ▭ Forest Service Wilderness
- ▭ National Park Service Wilderness
- ▭ State or Territory
- ▭ County or Equivalent
- ▭ Bureau of Indian Affairs (BIA)
- ▭ Bureau of Land Management (BLM)
- ▭ National Park Service (NPS)
- ▭ State
- ▭ US Forest Service (USFS)
- ▭ Private or Undetermined



Incident Name	Latitude	Longitude	Incident Name	Latitude	Longitude
ADAMS FORK	46° 20.151' N	121° 39.861' W	LAKE CREEK	46° 34.760' N	121° 54.838' W
ALLEN MOUNTAIN	46° 39.530' N	121° 51.628' W	MCCOY CREEK	46° 17.230' N	121° 47.621' W
BEAR CREEK	46° 18.584' N	121° 49.286' W	MISSION	46° 29.187' N	121° 35.326' W
BERRY	46° 39.229' N	121° 52.154' W	POTHOLE	46° 42.385' N	121° 55.185' W
BERTHA MAY	46° 42.235' N	121° 54.140' W	SANCTUARY ROCK	46° 28.192' N	121° 36.967' W
BLUE LAKE	46° 24.020' N	121° 42.771' W	SILVER	46° 38.550' N	121° 48.904' W
CARLTON RIDGE	46° 43.018' N	121° 29.420' W	SKATE	46° 39.088' N	121° 48.893' W
COUGAR GAP	46° 39.041' N	121° 50.706' W	SNAGTOOTH	46° 14.996' N	121° 49.459' W
DAVIS CREEK	46° 36.103' N	121° 49.971' W	SOUTH FORK	46° 34.793' N	121° 46.459' W
DAVIS MOUNTAIN	46° 35.427' N	121° 48.988' W	SPENCER QUARTZ	46° 14.499' N	121° 48.291' W
DEER CREEK	46° 47.710' N	121° 56.661' W	ST MICHAEL	46° 27.545' N	121° 37.766' W
GRASSY MOUNTAIN	46° 34.194' N	121° 52.648' W	TWIN SISTERS	46° 29.040' N	121° 44.071' W
HORSESHOE	46° 27.121' N	121° 39.116' W	WILLAME	46° 36.523' N	121° 48.609' W
JACKPOT CREEK	46° 26.517' N	121° 42.480' W	YEW	46° 38.180' N	121° 50.489' W
KLUCKITAT	46° 28.510' N	121° 35.762' W			

FC Point Type	Label	Comments	Elevation (Feet)	Latitude WGS84 DDM	Longitude WGS84 DDM
Sling Site	Sling 2		46° 43.075' N	121° 29.451' W	
Sling Site	Sling 1		46° 43.152' N	121° 29.373' W	
Helibase	Wakepish Snow Park	Type 1,2,3 Helicopter - off of 99 rd	2860	46° 36.399' N	121° 40.503' W
Helibase	Orr Creek Snow Park	Type 1,2,3 Helicopter - off of 56 rd	2925	46° 21.095' N	121° 35.848' W
Helibase	Johnson Creek Snow Park	Type 3 Helicopter - off of 21 rd	2350	46° 31.045' N	121° 35.792' W
Helibase	47 Road	Type 3 Helicopter - 47 and 4710 road junction	1670	46° 37.366' N	121° 42.391' W
Helibase	Cispus	Type 2,3 Helicopter - Field at Cispus learning center	1300	46° 26.337' N	121° 50.913' W
Helibase	Pinto	Type 3 Helicopter - Gravel Pit off of 28 and 121 spur	2850	46° 20.785' N	121° 51.661' W
Helibase	Glacier View	Type 3 Helicopter	4600	46° 47.552' N	121° 58.042' W
Helibase	25 Road	Type 3 Helicopter	1075	46° 26.484' N	121° 59.879' W
Helibase	Burley Lookout	Type 3 Helicopter	5250	46° 24.403' N	121° 51.745' W
Helibase	H-3		46° 34.805' N	121° 53.496' W	
Helibase	H-5	T2/T3 HOGG - vehicles could block spot	46° 36.366' N	121° 49.308' W	
Helibase	H-50	T2/T3 snag near the LZ, Medevac HOGG Hover hole	46° 13.450' N	121° 49.471' W	
Helibase	H-30	T3 HOGG, Jackpot Medevac #1	46° 26.310' N	121° 41.241' W	
Helibase	H-32	Jackpot Medevac #2	46° 26.430' N	121° 42.761' W	