

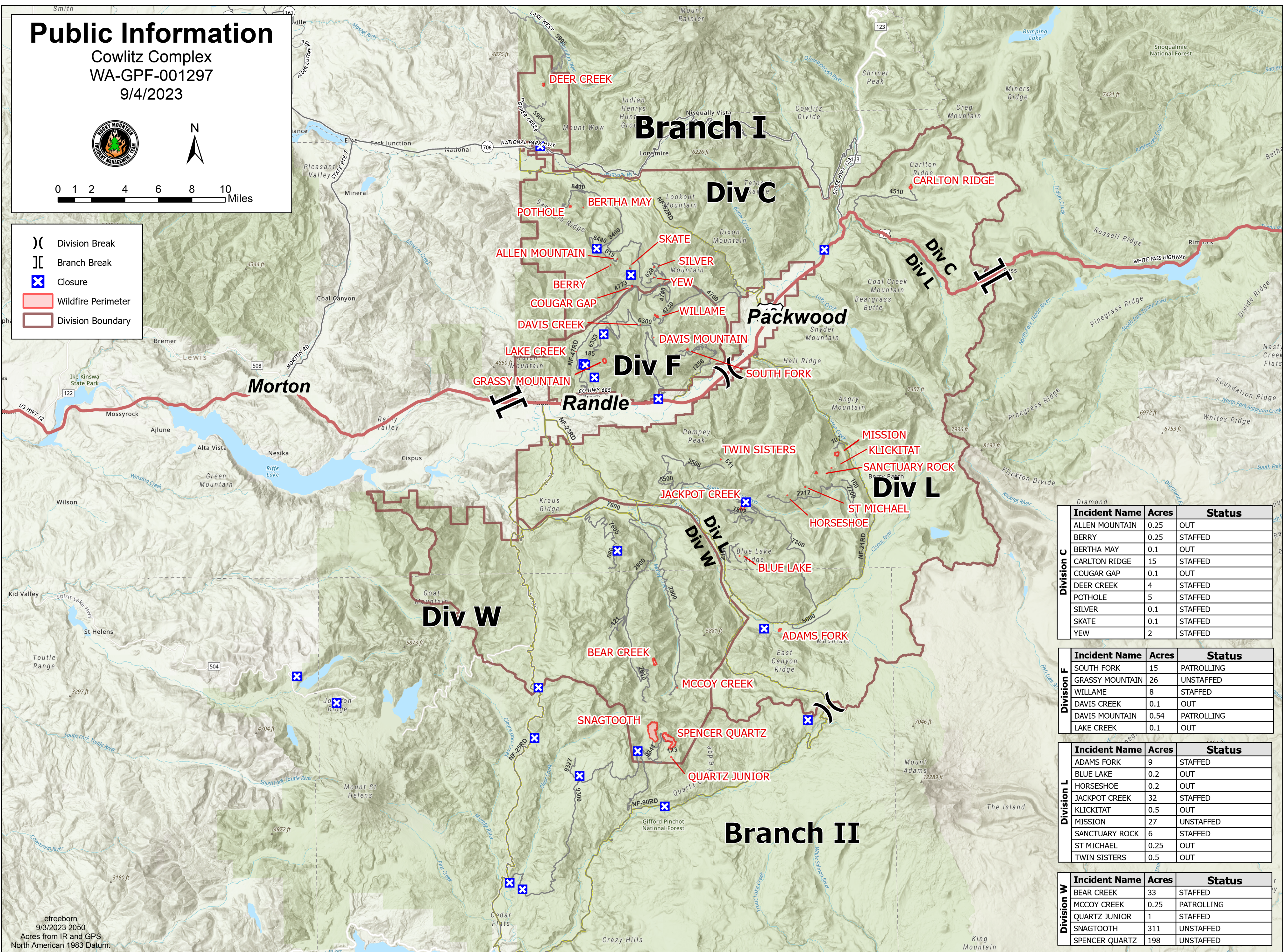
Public Information

Cowlitz Complex
WA-GPF-001297
9/4/2023



0 1 2 4 6 8 10 Miles

- Division Break
- Branch Break
- Closure
- Wildfire Perimeter
- Division Boundary



| Division | Incident Name | Acres | Status |
|---------------|---------------|----------------|---------|
| | Division C | ALLEN MOUNTAIN | 0.25 |
| BERRY | | 0.25 | STAFFED |
| BERTHA MAY | | 0.1 | OUT |
| CARLTON RIDGE | | 15 | STAFFED |
| COUGAR GAP | | 0.1 | OUT |
| DEER CREEK | | 4 | STAFFED |
| POTHOLE | | 5 | STAFFED |
| SILVER | | 0.1 | STAFFED |
| SKATE | | 0.1 | STAFFED |
| YEW | 2 | STAFFED | |

| Division | Incident Name | Acres | Status |
|-----------------|---------------|------------|------------|
| | Division F | SOUTH FORK | 15 |
| GRASSY MOUNTAIN | | 26 | UNSTAFFED |
| WILLAME | | 8 | STAFFED |
| DAVIS CREEK | | 0.1 | OUT |
| DAVIS MOUNTAIN | | 0.54 | PATROLLING |
| LAKE CREEK | 0.1 | OUT | |

| Division | Incident Name | Acres | Status |
|----------------|---------------|------------|-----------|
| | Division L | ADAMS FORK | 9 |
| BLUE LAKE | | 0.2 | OUT |
| HORSESHOE | | 0.2 | OUT |
| JACKPOT CREEK | | 32 | STAFFED |
| KLICKITAT | | 0.5 | OUT |
| MISSION | | 27 | UNSTAFFED |
| SANCTUARY ROCK | | 6 | STAFFED |
| ST MICHAEL | | 0.25 | OUT |
| TWIN SISTERS | 0.5 | OUT | |

| Division | Incident Name | Acres | Status |
|----------------|---------------|------------|------------|
| | Division W | BEAR CREEK | 33 |
| MCCOY CREEK | | 0.25 | PATROLLING |
| QUARTZ JUNIOR | | 1 | STAFFED |
| SNAGTOOTH | | 311 | UNSTAFFED |
| SPENCER QUARTZ | | 198 | UNSTAFFED |

efreeborn
9/3/2023 2050
Acres from IR and GPS
North American 1983 Datum.