

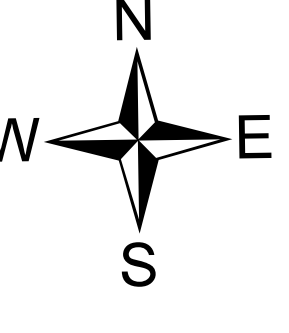
122°15'W 122°12'W 122°9'W 122°6.01'W 122°3'W 122°W 121°57'W 121°54'W 121°51.01'W 121°48'W 121°45'W 121°42'W 121°39'W 121°36.01'W 121°33'W 121°30'W 121°27'W 121°24'W

Transportation

Cowlitz Complex

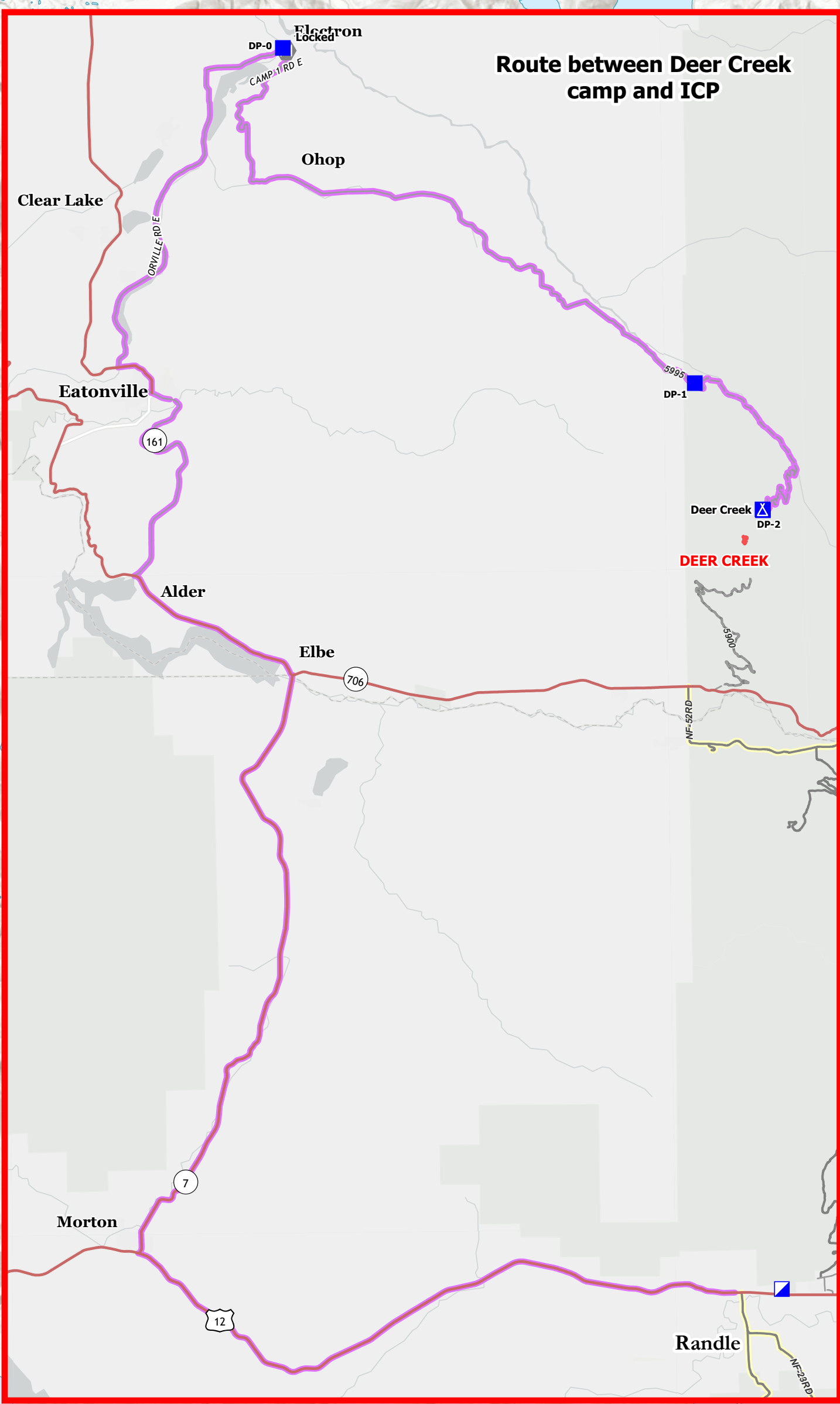
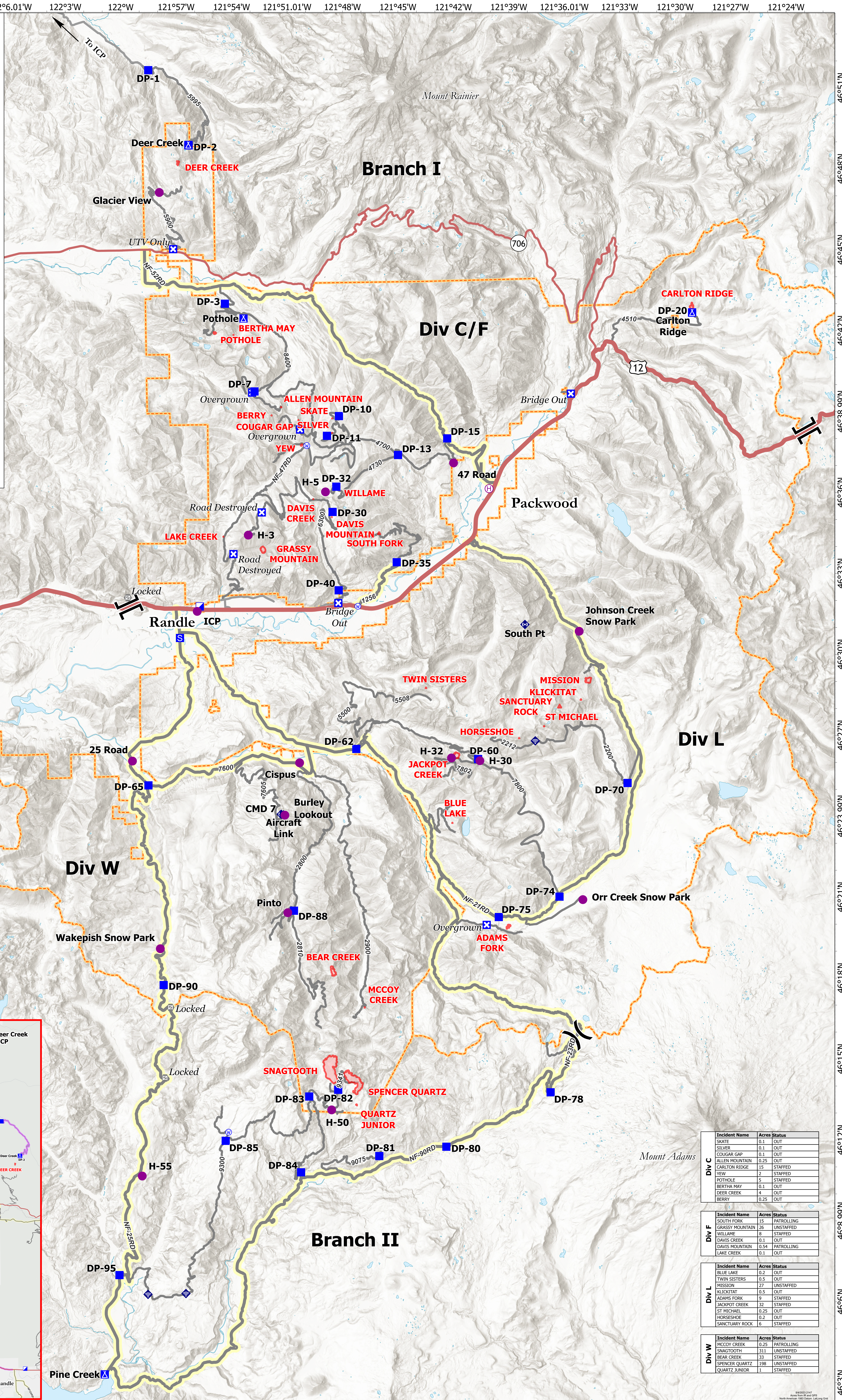
WA-GPF-001297

9/5/2023



0 6
Miles

- Helispot
- ⊕ Helibase
- ⌘ Division Break
- ⌘ Branch Break
- Ⓜ Incident Command Post
- Drop Point
- ⓧ Closure
- ⓧ Camp
- ⓧ Staging Area
- ⊙ Gate
- ⓧ Internet Access
- ⓧ Repeater
- ⓧ Water Source
- Main Access Roads
- High Clearance Roads
- ▭ Wildfire Daily Fire Perimeter
- ▭ Division Boundaries



Incident Name	Acres	Status
DEER CREEK	4	OUT
BERRY	0.25	OUT
BERTHA MAY	0.1	OUT
POTSOLE	5	STAFFED
YEW	2	STAFFED
ALLEN MOUNTAIN	0.25	OUT
CARLTON RIDGE	15	STAFFED
SILVER	0.1	OUT
COUGAR GAP	0.1	OUT
SKATE	0.2	OUT

Incident Name	Acres	Status
LAKE CREEK	0.1	OUT
DAVIS MOUNTAIN	0.54	PATROLLING
WILLAME	8	STAFFED
DAVIS CREEK	0.1	OUT
SOUTH FORK	15	PATROLLING
GRASSY MOUNTAIN	26	UNSTAFFED

Incident Name	Acres	Status
MISSION	27	UNSTAFFED
TWIN SISTERS	0.5	OUT
BLUE LAKE	0.2	OUT
ST MICHAEL	0.25	OUT
JACKPOT CREEK	32	STAFFED
ADAMS FORK	9	STAFFED
KLICKITAT	0.5	OUT
HORSESHOE	0.2	OUT
SANCTUARY ROCK	6	STAFFED

Incident Name	Acres	Status
QUARTZ JUNIOR	1	STAFFED
SPENCER QUARTZ	198	UNSTAFFED
BEAR CREEK	33	STAFFED
MCCOY CREEK	0.25	PATROLLING