





122°15'W 122°9'W 122°3'W 122°W 121°57'W 121°51.01'W 121°45'W 121°39'W 121°33'W 121°27'W 121°21.01'W

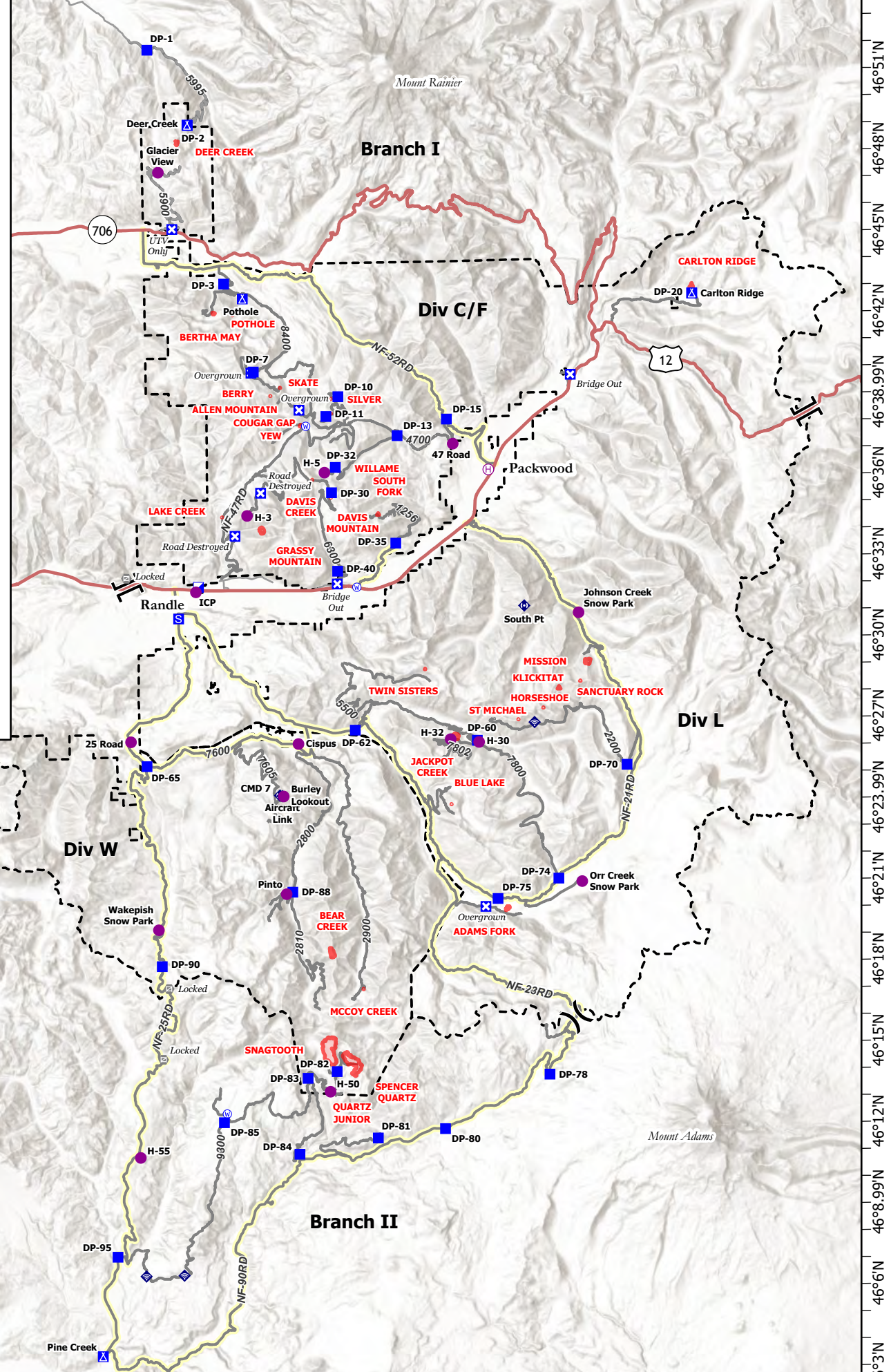
### Transportation

Cowlitz Complex  
WA-GPF-001297  
9/5/2023

Miles

- Helispot
- H Helibase
- ) Division Break
- | Branch Break
- ICP Incident Command Post
- Drop Point
- X Closure
- A Camp
- S Staging Area
- G Gate
- 📶 Internet Access
- 📡 Repeater
- W Water Source
- Main Access Roads
- High Clearance Roads
- Wildfire Daily Fire Perimeter
- Division Boundaries



122°15'W 122°9'W 122°3'W 122°W 121°57'W 121°51.01'W 121°45'W 121°39'W 121°33'W 121°27'W 121°21.01'W

46°53.99'N 46°51'N 46°48'N 46°45'N 46°42'N 46°38.99'N 46°36'N 46°33'N 46°30'N 46°27'N 46°23.99'N 46°21'N 46°18'N 46°15'N 46°12'N 46°8.99'N 46°6'N 46°3'N

Source: aarkam 04/2023 1860  
Aces from IR and GPS  
North American 1983 Datum, LatLong Grid