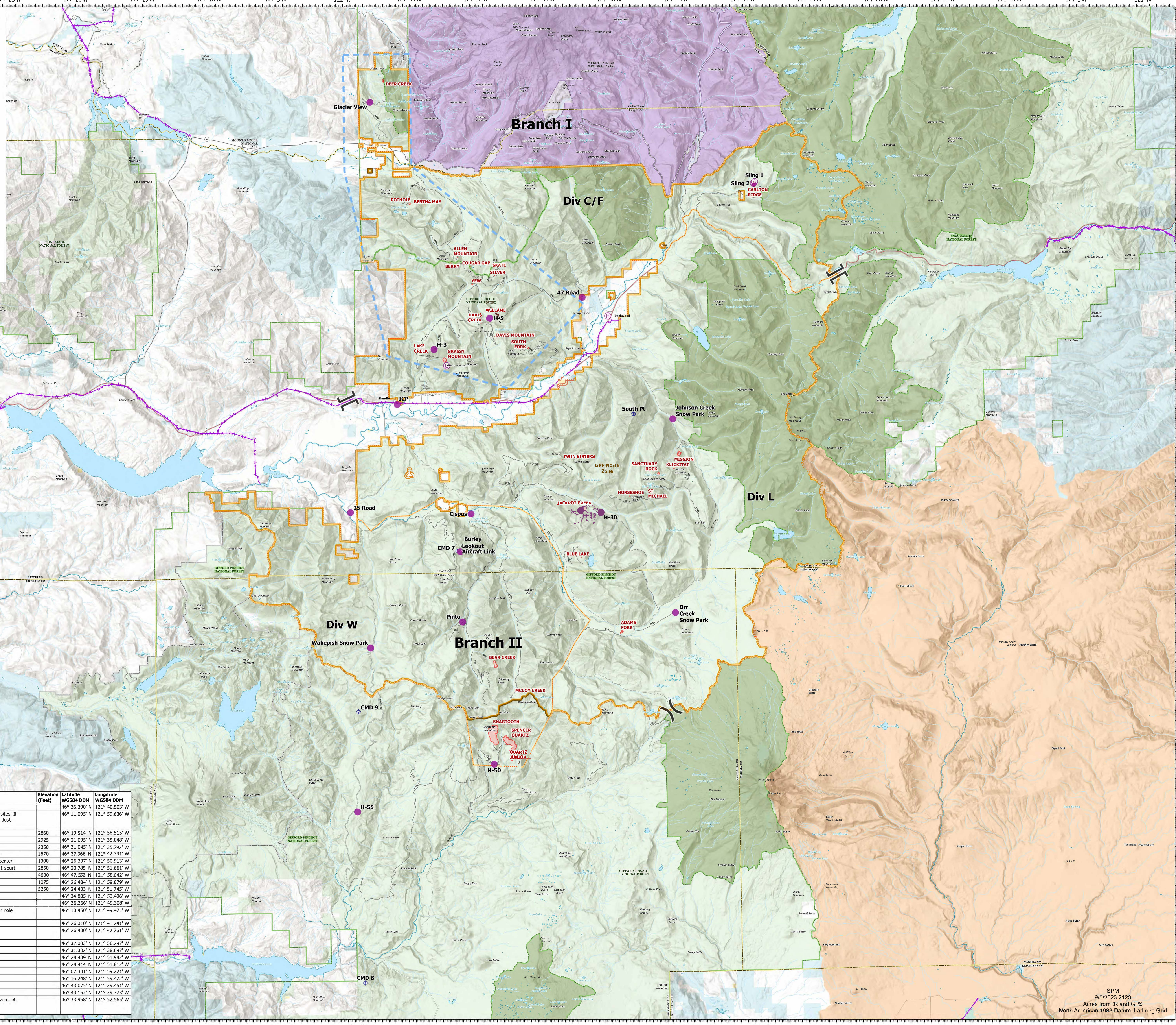


Air Operations

Cowlitz Complex
WA-GPF-001297
9/6/2023



- Helispot
- ⊕ Helibase
- ⊙ Sling Site
- Unimproved Landing Area
- Division Break
- Branch Break
- ⚡ Repeater
- ⚡ Aerial Hazard
- ⬮ TFR 3_5031
- Wildfire Daily Fire Perimeter
- Division Boundaries
- Initial Attack Responsibility
- Forest Service Wilderness
- National Park Service Wilderness
- State or Territory
- County or Equivalent
- Bureau of Indian Affairs (BIA)
- Bureau of Land Management (BLM)
- National Park Service (NPS)
- State
- US Fish and Wildlife Service (USFWS)
- US Forest Service (USFS)
- Private or Undetermined



Incident Name	Latitude	Longitude
ALLEN MOUNTAIN	46° 39.530' N	121° 51.628' W
BERRY	46° 39.229' N	121° 52.154' W
BERTHA MAY	46° 42.235' N	121° 54.140' W
CARLTON RIDGE	46° 43.018' N	121° 29.420' W
COUGAR GAP	46° 39.041' N	121° 50.706' W
DAVIS CREEK	46° 36.103' N	121° 49.971' W
DAVIS MOUNTAIN	46° 35.427' N	121° 48.988' W
DEER CREEK	46° 48.602' N	121° 57.002' W
GRASSY MOUNTAIN	46° 34.262' N	121° 52.988' W
LAKE CREEK	46° 34.760' N	121° 54.838' W
POTHOLE	46° 42.385' N	121° 55.185' W
SILVER	46° 38.550' N	121° 48.904' W
SKATE	46° 39.088' N	121° 48.893' W
SOUTH FORK	46° 34.793' N	121° 46.455' W
WILLAME	46° 36.523' N	121° 48.669' W
YEW	46° 38.180' N	121° 50.489' W

Incident Name	Latitude	Longitude
ADAMS FORK	46° 20.151' N	121° 39.861' W
BLUE LAKE	46° 24.020' N	121° 42.771' W
HORSESHOE	46° 27.121' N	121° 39.116' W
JACKPOT CREEK	46° 26.517' N	121° 42.480' W
KLUKITAT	46° 28.510' N	121° 35.762' W
MISSION	46° 29.226' N	121° 33.348' W
SANCTUARY ROCK	46° 28.192' N	121° 36.967' W
ST MICHAEL	46° 27.545' N	121° 37.766' W
TWIN SISTERS	46° 29.040' N	121° 44.071' W

Incident Name	Latitude	Longitude
BEAR CREEK	46° 18.584' N	121° 49.286' W
MCCOY CREEK	46° 17.230' N	121° 47.621' W
QUARTZ JUNIOR	46° 13.626' N	121° 48.135' W
SNAGTOOTH	46° 14.996' N	121° 49.459' W
SPENCER QUARTZ	46° 14.499' N	121° 48.291' W

FC Point Type	Label	Comments	Elevation (Feet)	Latitude WGS84 DDM	Longitude WGS84 DDM
Helibase	H-55	Approved - Type 2 or 3 - Potentially 3 landing sites. If planning ongoing missions in and out of there dust abatement WILL be needed.		46° 11.095' N	121° 40.503' W
Helispot	Wakepish Snow Park	Type 1,2,3 Helicopter - off of 99 Rd	2860	46° 19.514' N	121° 58.515' W
Helispot	Orr Creek Snow Park	Type 1,2,3 Helicopter - off of 56 Rd	2925	46° 21.095' N	121° 35.848' W
Helispot	Johnson Creek Snow Park	Type 3 Helicopter - off of 21 Rd	2350	46° 31.045' N	121° 35.792' W
Helispot	47 Road	Type 3 Helicopter - 47 and 4710 road junction	1670	46° 37.360' N	121° 42.391' W
Helispot	Cispus	Type 2,3 Helicopter - Field at Cispus learning center	1300	46° 26.337' N	121° 50.913' W
Helispot	Pinto	Type 3 Helicopter - Gravel Pit off of 28 and 121 spur	2050	46° 20.785' N	121° 51.661' W
Helispot	Glacier View	Type 3 Helicopter	4600	46° 47.852' N	121° 58.042' W
Helispot	25 Road	Type 3 Helicopter	1075	46° 26.484' N	121° 59.879' W
Helispot	Burley Lookout	Type 3 Helicopter	5250	46° 24.403' N	121° 51.745' W
Helispot	H-3		46° 34.805' N	121° 53.496' W	
Helispot	H-5	T2/T3 HOGG - vehicles could block spot	46° 36.366' N	121° 49.308' W	
Helispot	H-50	T2/T3 snag near the LZ, Medevac HOGG Hover hole	46° 13.450' N	121° 49.471' W	
Helispot	H-30	T3 HOGG, Jackpot Medevac #1	46° 26.310' N	121° 41.241' W	
Helispot	H-32	Jackpot Medevac #2	46° 26.430' N	121° 42.761' W	
Helispot	ICP	Behind the Randle fire station	46° 32.003' N	121° 56.297' W	
Repeater	South Pt		46° 31.332' N	121° 38.697' W	
Repeater	CMD 7		46° 24.439' N	121° 51.942' W	
Repeater	Aircraft Link		46° 24.414' N	121° 51.812' W	
Repeater	CMD 8		46° 02.201' N	121° 59.221' W	
Repeater	CMD 9		46° 16.248' N	121° 59.472' W	
Sling Site	Sling 2	Sling 2	46° 43.075' N	121° 29.451' W	
Sling Site	Sling 1	Sling 1	46° 43.152' N	121° 29.373' W	
Unimprov Landing Area		Viewed from air, potential Helispot with improvement.	46° 33.958' N	121° 52.565' W	