

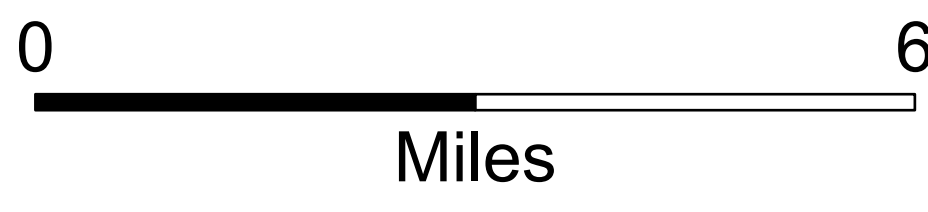
122°15'W 122°12'W 122°9'W 122°6.01'W 122°3'W 122°W 121°57'W 121°54'W 121°51.01'W 121°48'W 121°45'W 121°42'W 121°39'W 121°36.01'W 121°33'W 121°30'W 121°27'W 121°24'W

Transportation

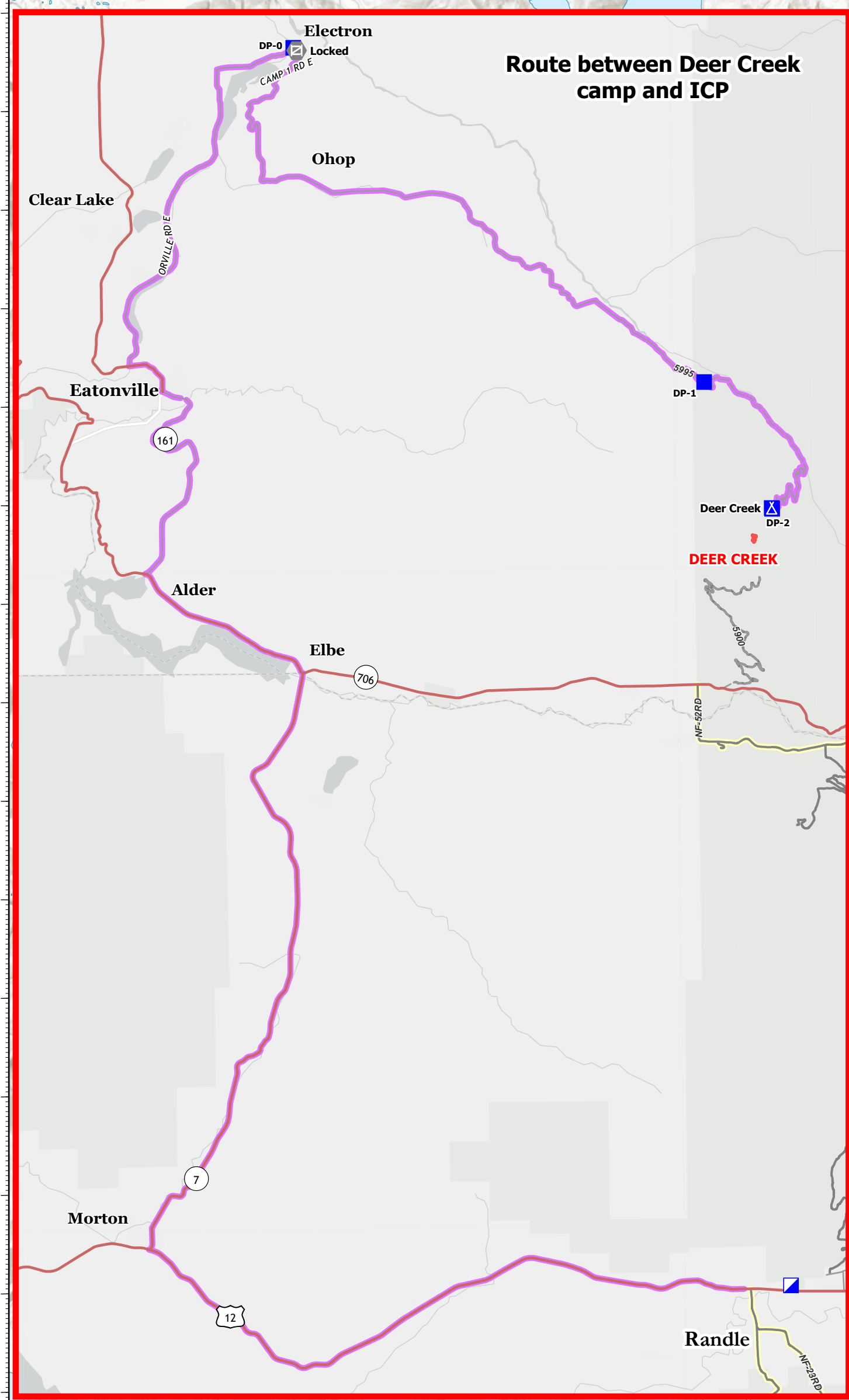
Cowlitz Complex

WA-GPF-001297

9/6/2023



- Helispot
- ⊕ Helibase
- ⌘ Division Break
- ⌘ Branch Break
- ⊠ Incident Command Post
- Drop Point
- ⊠ Closure
- ⊠ Camp
- ⊠ Staging Area
- ⊙ Gate
- ⊠ Internet Access
- ⊠ Repeater
- ⊠ Water Source
- Main Access Roads
- High Clearance Roads
- ▭ Wildfire Daily Fire Perimeter
- ▭ Division Boundaries



Incident Name	Acres	Status
ALLEN MOUNTAIN	0.25	OUT
BERRY	0.25	OUT
BERTHA MAY	0.1	OUT
CARLTON RIDGE	15	STAFFED
COUGAR GAP	0.1	OUT
DAVIS CREEK	0.1	OUT
DAVIS MOUNTAIN	0.54	PATROLLING
DEER CREEK	2	OUT
GRASSY MOUNTAIN	26	UNSTAFFED
LAKE CREEK	0.1	OUT
POTSOLE	5	STAFFED
SILVER	0.1	OUT
SKATE	0.1	OUT
SOUTH FORK	15	PATROLLING
WILLAME	8	STAFFED
YEW	2	STAFFED

Incident Name	Acres	Status
ADAMS FORK	1	STAFFED
BLUE LAKE	0.2	OUT
HORSESHOE	0.2	OUT
JACKPOT CREEK	32	STAFFED
KLICKITAT	0.5	OUT
MISSION	12	STAFFED
SANCTUARY ROCK	6	PATROLLING
ST MICHAEL	0.25	OUT
TWIN SISTERS	0.5	OUT

Incident Name	Acres	Status
BEAR CREEK	33	PATROLLING
MCCOY CREEK	0.25	OUT
QUARTZ JUNIOR	1	PATROLLING
SNAGTOOTH	311	UNSTAFFED
SPENCER QUARTZ	198	STAFFED