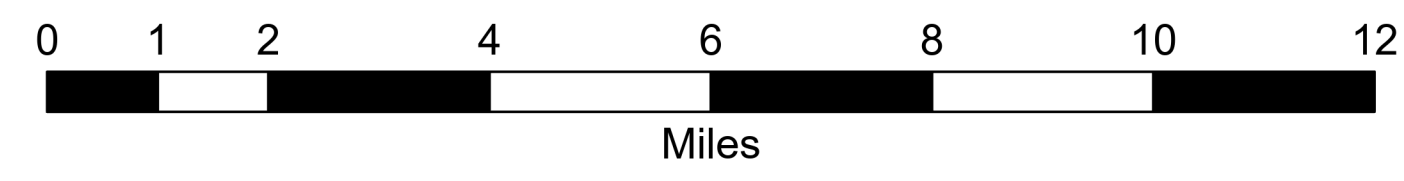


Public Briefing

Cowlitz Complex
WA-GPF-001297
9/7/2023

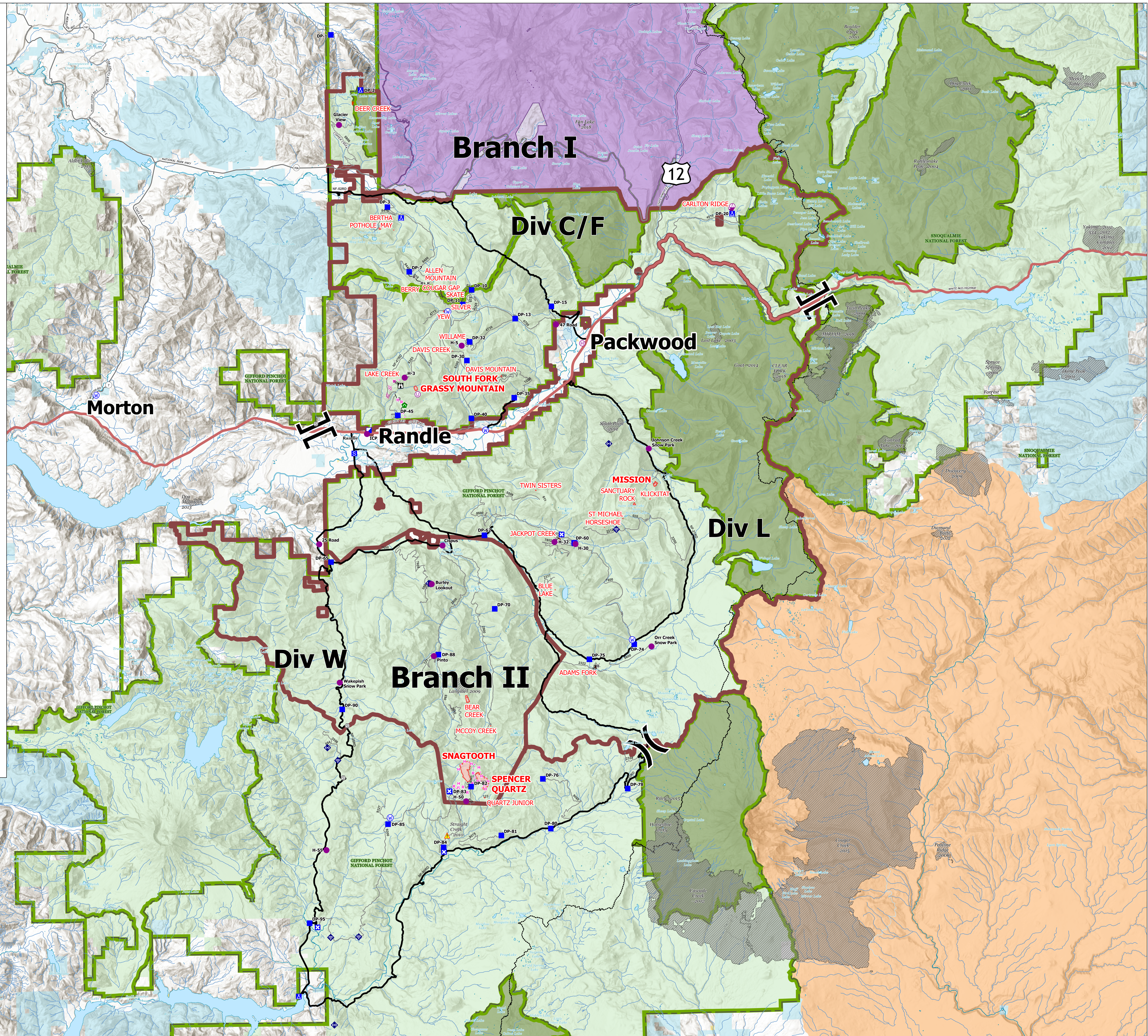


- Helispot
- Ⓜ Helibase
- Ⓢ Sling Site
- Ⓛ Unimproved Landing Area
- Ⓜ Division Break
- Ⓜ Branch Break
- Ⓜ Incident Command Post
- Ⓜ Drop Point
- Ⓜ Closure
- Ⓜ Camp
- Ⓜ Staging Area
- Ⓜ Lookout
- Ⓜ Gate
- Ⓜ Culvert
- Ⓜ Internet Access
- Ⓜ Repeater
- Ⓜ Hazard
- Ⓜ Water Source
- Ⓜ Completed Dozer Line
- Ⓜ Completed Hand Line
- Ⓜ Completed Road as Line
- Ⓜ Planned Dozer Line
- Ⓜ Planned Hand Line
- Ⓜ Planned Mixed Construction Line
- Ⓜ Planned Road as Line
- Ⓜ Secondary Hwy
- Ⓜ Local Connector
- Ⓜ Local Road
- Ⓜ 4WD
- Ⓜ Major Roads
- Ⓜ High Clearance Roads
- Ⓜ Wildfire Perimeter
- Ⓜ Division Boundaries
- Ⓜ Fire History
- Ⓜ Forest Admin Boundary
- Ⓜ Forest Service Wilderness
- Ⓜ National Park Service Wilderness
- Ⓜ Bureau of Land Management (BLM)
- Ⓜ National Park Service (NPS)
- Ⓜ State
- Ⓜ US Forest Service (USFS)

Incident Name	Acres	Status
ALLEN MOUNTAIN	0.25	OUT
BERRY	0.25	OUT
BERTHA MAY	0.1	OUT
CARLTON RIDGE	15	STAFFED
COUGAR GAP	0.1	OUT
DAVIS CREEK	0.1	OUT
DAVIS MOUNTAIN	0.54	PATROLLING
DEER CREEK	4	OUT
GRASSY MOUNTAIN	22	UNSTAFFED
LAKE CREEK	0.1	OUT
POTHOLE	5	STAFFED
SILVER	0.1	OUT
SKATE	0.1	OUT
SOUTH FORK	15	PATROLLING
WILLAME	8	STAFFED
YEW	2	STAFFED

Incident Name	Acres	Status
ADAMS FORK	9	STAFFED
BLUE LAKE	0.2	OUT
HORSESHOE	0.2	OUT
JACKPOT CREEK	32	STAFFED
KLICKITAT	0.5	OUT
MISSION	22	STAFFED
SANCTUARY ROCK	6	PATROLLING
ST MICHAEL	0.25	OUT
TWIN SISTERS	0.5	OUT

Incident Name	Acres	Status
BEAR CREEK	32	PATROLLING
MCCOY CREEK	0.25	OUT
QUARTZ JUNIOR	1	PATROLLING
SNAGTOOTH	296	UNSTAFFED
SPENCER QUARTZ	190	STAFFED



© 1983-2023 Rocky Mountain Wildfire Management Team
9/6/2023 1651
Acres from IR and GPS
North American 1983