

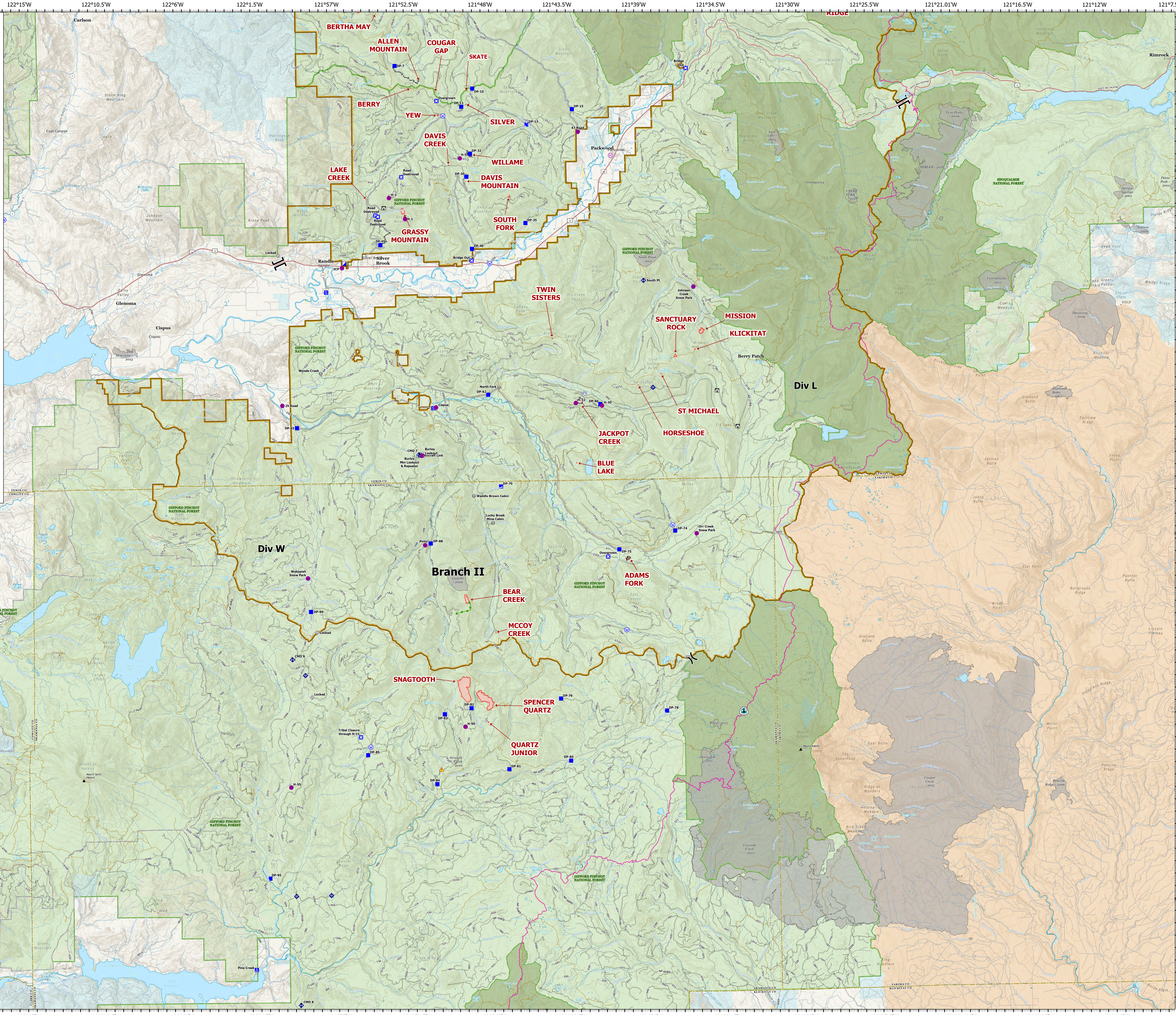
Operations Branch II

Cowlitz Complex
WA-GPF-001297
9/8/2023

Incident Name	Acres
SANCTUARY ROCK	6
GRASSY MOUNTAIN	22
MISSION	22
BEAR CREEK	32
SPENCER QUARTZ	180
SNAGTOOTH	296



- Helispot
 - ⊕ Helibase
 - ⌘ Division Break
 - ⌚ Branch Break
 - Ⓜ Incident Command Post
 - Ⓧ Drop Point
 - Ⓝ Closure
 - Ⓜ Camp
 - Ⓜ Staging Area
 - Ⓜ Lookout
 - Ⓜ Value at Risk
 - Ⓜ Gate
 - Ⓜ Mobile Weather Unit
 - Ⓜ Internet Access
 - Ⓜ Repeater
 - Ⓜ Hazard
 - Ⓜ Water Source
 - Ⓜ Pump
 - Ⓜ Water Tank
 - Ⓜ Completed Dozer Line
 - Ⓜ Completed Hand Line
 - Ⓜ Completed Road as Line
 - Ⓜ Access or Improved Road
 - Ⓜ Other
- ➡ Escape Route
 - ➡ Pacific Crest National Scenic Trail
 - ➡ Trail
 - ➡ Highway
 - ➡ Local Road
 - ➡ Open Road
 - ➡ High Clearance Road
 - ➡ Closed Road
 - ➡ Converted Route
 - ➡ Decommissioned Road
 - ➡ Planned Road
 - ➡ Wildfire Daily Fire Perimeter
 - ➡ Initial Attack Responsibility
 - ➡ Fire History
 - ➡ Forest Service Wilderness
 - ➡ Bureau of Indian Affairs (BIA)
 - ➡ Bureau of Land Management (BLM)
 - ➡ State
 - ➡ US Forest Service (USFS)
 - ➡ Forest Admin Boundary
 - ➡ County or Equivalent



Map Scale: 1 inch = 1 mile
Acres from 9/8/2023 09:01
North American 1983 Datum, UTM Zone 12N
© 2023 US Forest Service