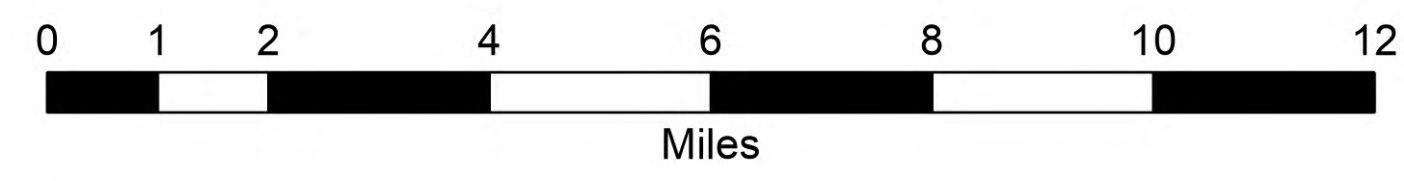


# Public Briefing

Cowlitz Complex  
WA-GPF-001297  
9/8/2023

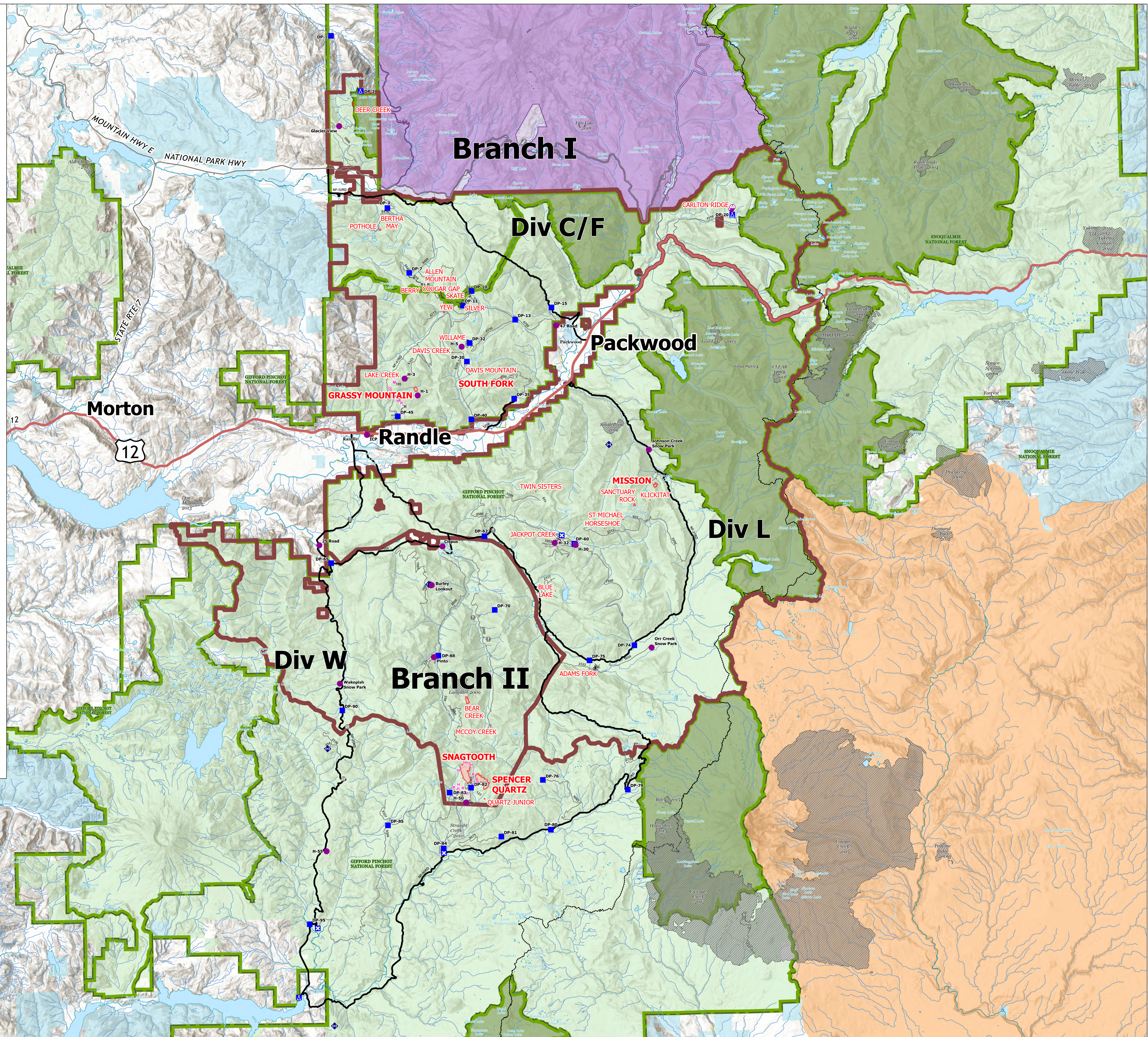


- Helispot
- ▲ Sling Site
- Drop Point
- ⊠ Closure
- ⊠ Camp
- Value at Risk
- ⊠ Gate
- ⬇ Repeater
- ⊠ Completed Dozer Line
- ⊠ Completed Hand Line
- ⊠ Completed Road as Line
- ⊠ Planned Dozer Line
- ⊠ Planned Hand Line
- Planned Mixed Construction Line
- Planned Road as Line
- Secondary Hwy
- Local Connector
- Local Road
- Major Roads
- High Clearance Roads
- Wildfire Perimeter
- Division Boundaries
- Fire History
- Forest Admin Boundary
- Forest Service Wilderness
- National Park Service Wilderness
- Bureau of Indian Affairs (BIA)
- Bureau of Land Management (BLM)
- National Park Service (NPS)
- State
- US Forest Service (USFS)

Incident Name	Acres	Status
<b>Division C/F</b>		
ALLEN MOUNTAIN	0.25	OUT
BERRY	0.25	OUT
BERTHA MAY	0.1	OUT
CARLTON RIDGE	15	STAFFED
COUGAR GAP	0.1	OUT
DAVIS CREEK	0.1	OUT
DAVIS MOUNTAIN	0.54	PATROLLING
DEER CREEK	4	OUT
GRASSY MOUNTAIN	22	UNSTAFFED
LAKE CREEK	0.1	OUT
POTHOLE	5	STAFFED
SILVER	0.1	OUT
SKATE	0.1	OUT
SOUTH FORK	15	PATROLLING
WILLAME	8	STAFFED
YEW	2	STAFFED

Incident Name	Acres	Status
<b>Division L</b>		
ADAMS FORK	9	STAFFED
BLUE LAKE	0.2	OUT
HORSESHOE	0.2	OUT
JACKPOT CREEK	32	STAFFED
KLICKITAT	0.5	OUT
MISSION	22	STAFFED
SANCTUARY ROCK	6	PATROLLING
ST MICHAEL	0.25	OUT
TWIN SISTERS	0.5	OUT

Incident Name	Acres	Status
<b>Division W</b>		
BEAR CREEK	32	PATROLLING
MCCOY CREEK	0.25	OUT
QUARTZ JUNIOR	1	PATROLLING
SNAGTOOTH	296	UNSTAFFED
SPENCER QUARTZ	180	STAFFED



©freedom 9/7/2023 2:42  
Acres from IR and GPS  
North American 1983