

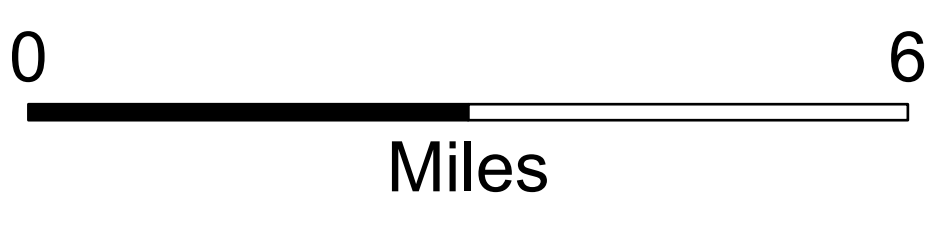
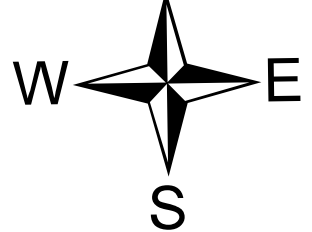
122°15'W 122°12'W 122°9'W 122°6.01'W 122°3'W 122°W 121°57'W 121°54'W 121°51.01'W 121°48'W 121°45'W 121°42'W 121°39'W 121°36.01'W 121°33'W 121°30'W 121°27'W 121°24'W

Transportation

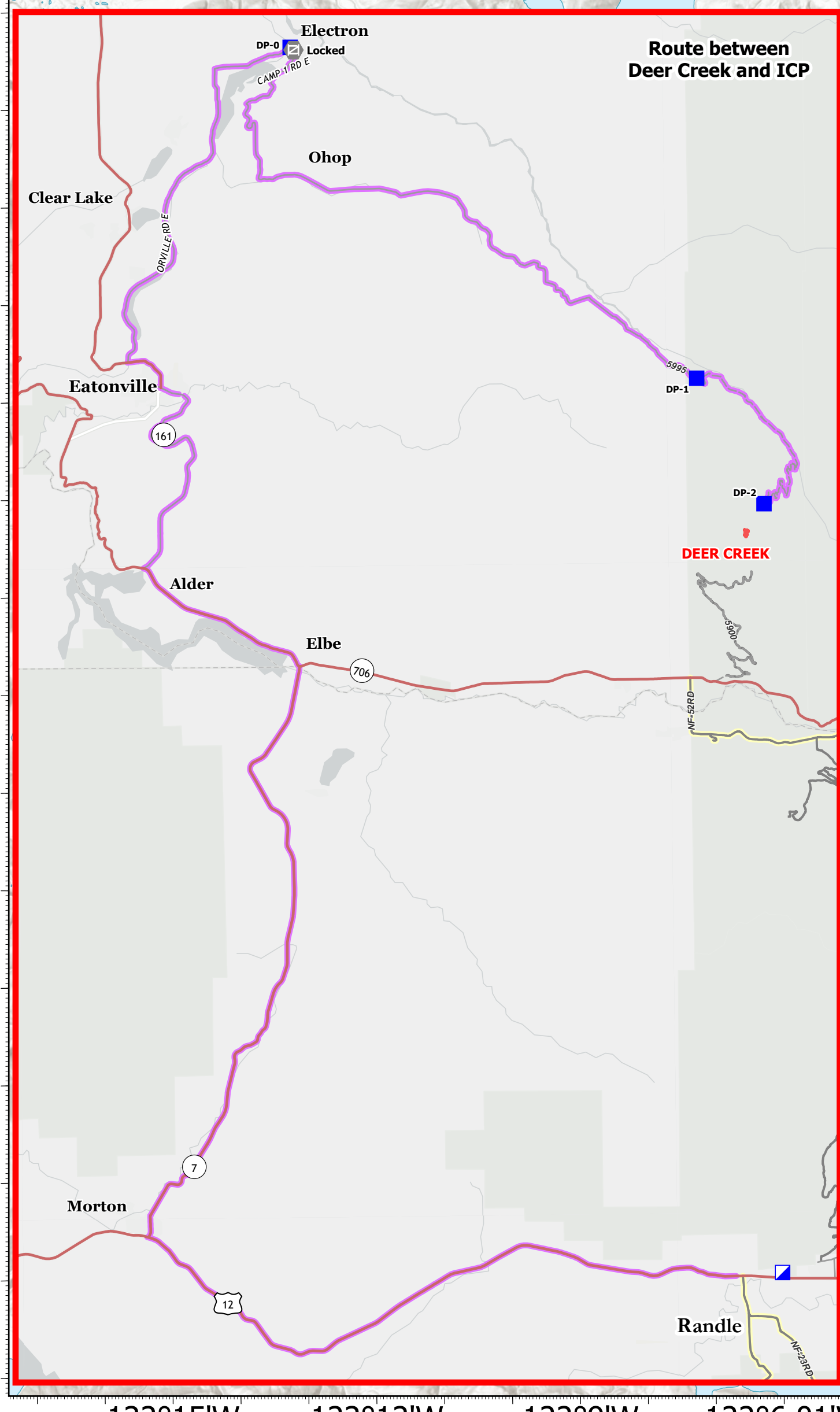
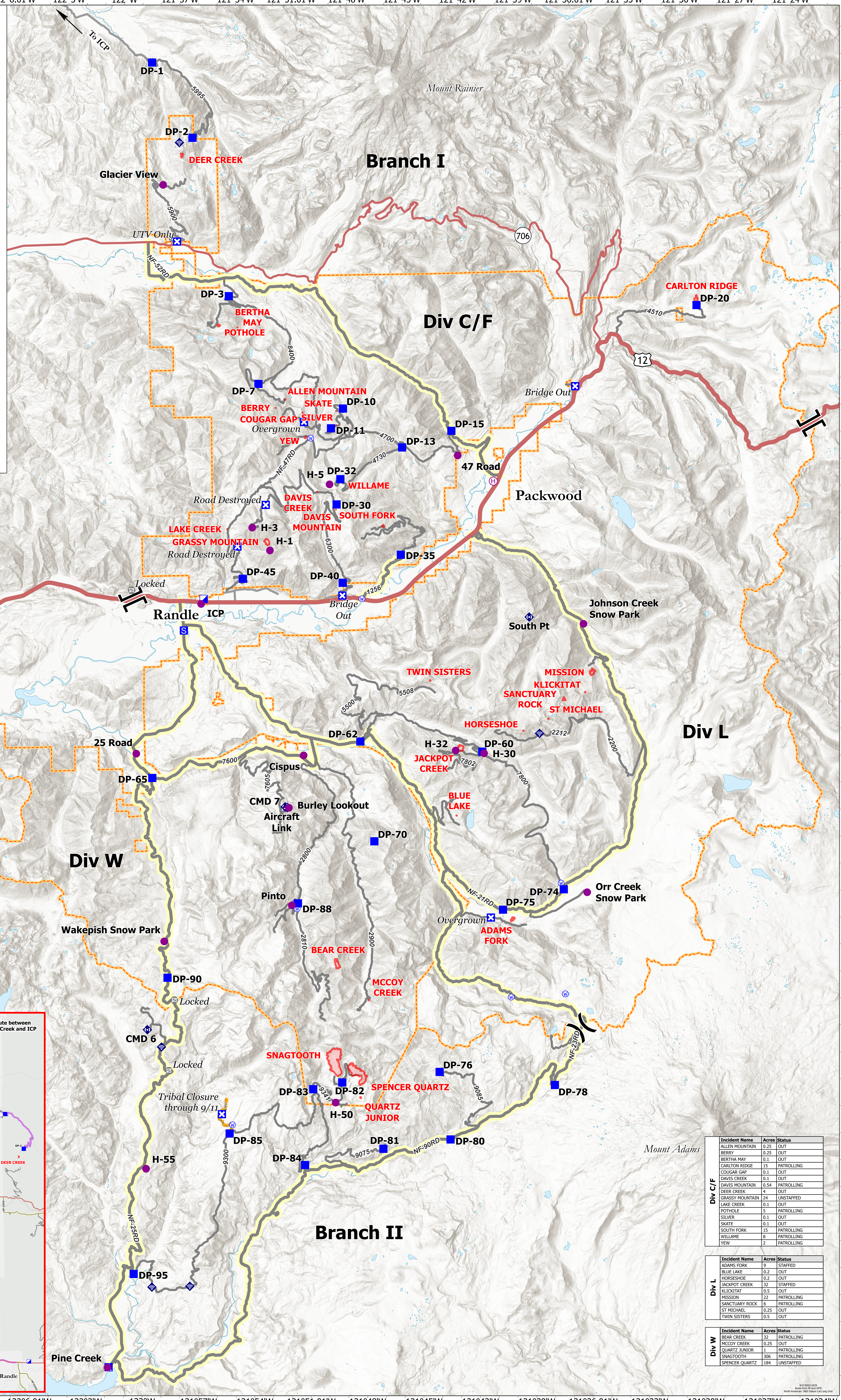
COWLITZ COMPLEX

WA-GPF-001297

9/12/2023



- Helispot
- Ⓜ Helibase
- ⌘ Division Break
- ⌘ Branch Break
- Incident Command Post
- Drop Point
- ⓧ Closure
- ⓧ Camp
- ⓧ Staging Area
- ⓧ Gate
- ⓧ Mobile Weather Unit
- ⓧ Internet Access
- ⓧ Repeater
- ⓧ Water Source
- ▭ Wildfire Daily Fire Perimeter
- ▭ Division Boundaries



Incident Name	Acres	Status
ALLEN MOUNTAIN	0.25	OUT
BERRY	0.25	OUT
BERTHA MAY	0.1	OUT
CARLTON RIDGE	15	PATROLLING
COUGAR GAP	0.1	OUT
DAVIS CREEK	0.1	OUT
DEER CREEK	2	OUT
GRASSY MOUNTAIN	24	UNSTAFFED
LAKE CREEK	0.1	OUT
POTHOLE	5	PATROLLING
SILVER	0.1	OUT
SKATE	0.1	OUT
SOUTH FORK	15	PATROLLING
WILLAME	8	PATROLLING
YEW	2	PATROLLING

Incident Name	Acres	Status
ADAMS FORK	1	STAFFED
BLUE LAKE	0.2	OUT
HORSESHOE	0.2	OUT
JACKPOT CREEK	32	STAFFED
KLICKITAT	0.5	OUT
MISSION	12	PATROLLING
SANCTUARY ROCK	6	PATROLLING
ST MICHAEL	0.25	OUT
TWIN SISTERS	0.5	OUT

Incident Name	Acres	Status
BEAR CREEK	32	PATROLLING
MCCOY CREEK	0.25	OUT
QUARTZ JUNIOR	1	PATROLLING
SNAGTOOTH	386	PATROLLING
SPENCER QUARTZ	184	UNSTAFFED

9/12/2023 2:25
North American 1983 Datum (Lamb Conformal)