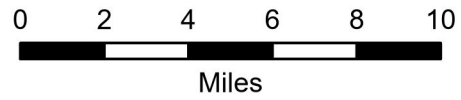


Public Information

COWLITZ COMPLEX
WA-GPF-001297
9/13/2023



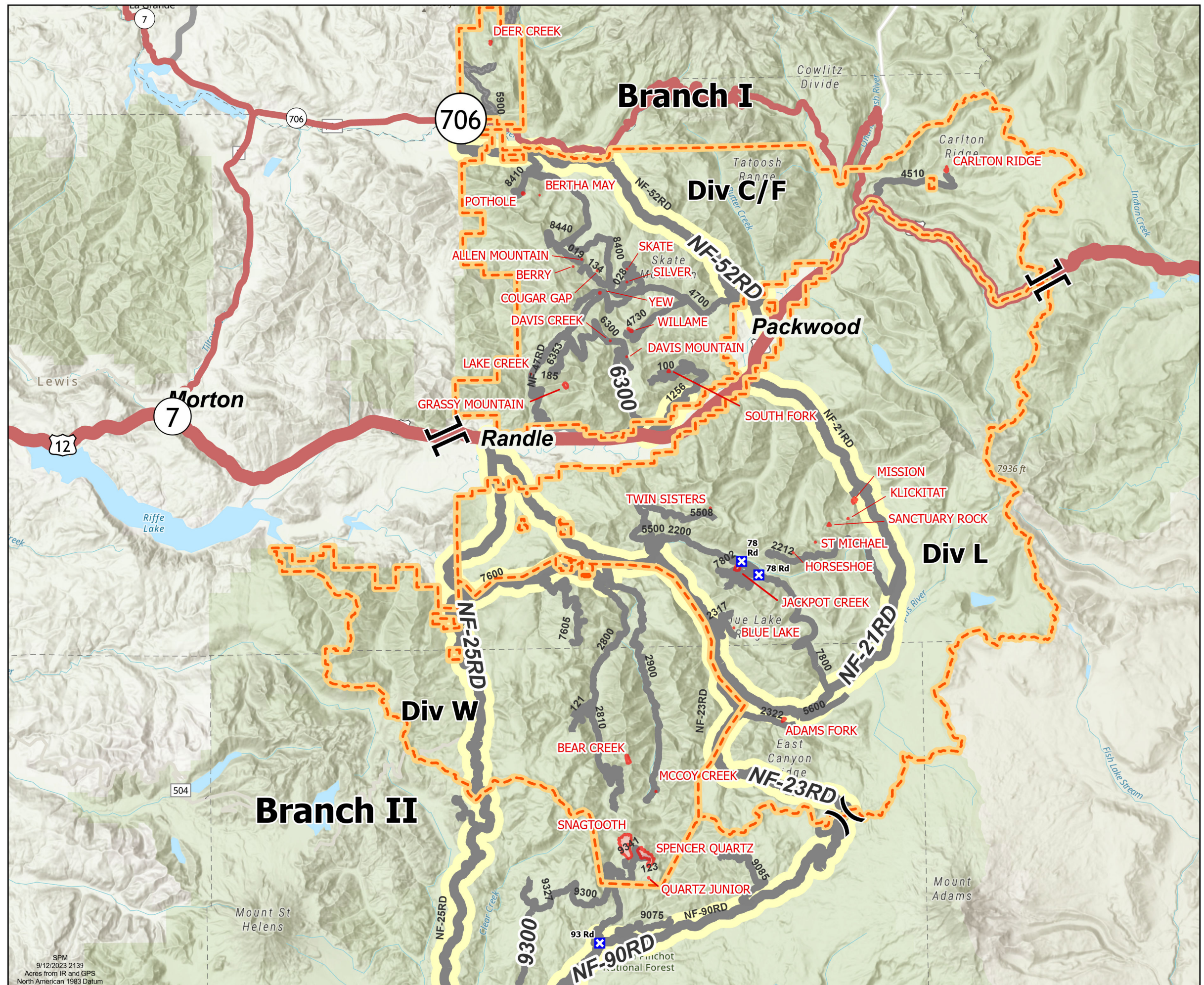
- (X) Division Break
- (||) Branch Break
- (X) Closure
- Wildfire Perimeter
- Initial Attack Responsibility



| Division C/F | Incident Name | Acres | Status |
|--------------|-----------------|------------|------------|
| | ALLEN MOUNTAIN | 0.25 | OUT |
| | BERRY | 0.25 | OUT |
| | BERTHA MAY | 0.1 | OUT |
| | CARLTON RIDGE | 15 | PATROLLING |
| | COUGAR GAP | 0.1 | OUT |
| | DAVIS CREEK | 0.1 | OUT |
| | DAVIS MOUNTAIN | 0.54 | PATROLLING |
| | DEER CREEK | 4 | OUT |
| | GRASSY MOUNTAIN | 24 | UNSTAFFED |
| | LAKE CREEK | 0.1 | OUT |
| | POTHOLE | 5 | PATROLLING |
| | SILVER | 0.1 | OUT |
| | SKATE | 0.1 | OUT |
| | SOUTH FORK | 15 | PATROLLING |
| WILLAME | 8 | PATROLLING | |
| YEW | 2 | PATROLLING | |

| Division L | Incident Name | Acres | Status |
|----------------|---------------|------------|------------|
| | BLUE LAKE | 0.2 | OUT |
| | TWIN SISTERS | 0.5 | OUT |
| | MISSION | 22 | PATROLLING |
| | KLICKITAT | 0.5 | OUT |
| | ADAMS FORK | 9 | STAFFED |
| | JACKPOT CREEK | 32 | STAFFED |
| | ST MICHAEL | 0.25 | OUT |
| HORSESHOE | 0.2 | OUT | |
| SANCTUARY ROCK | 6 | PATROLLING | |

| Division W | Incident Name | Acres | Status |
|---------------|----------------|------------|------------|
| | MCCOY CREEK | 0.25 | OUT |
| | SNAGTOOTH | 306 | PATROLLING |
| | BEAR CREEK | 32 | PATROLLING |
| | SPENCER QUARTZ | 184 | UNSTAFFED |
| QUARTZ JUNIOR | 1 | PATROLLING | |



SPM
9/12/2023 2139
Acres from IR and GPS
North American 1983 Datum