

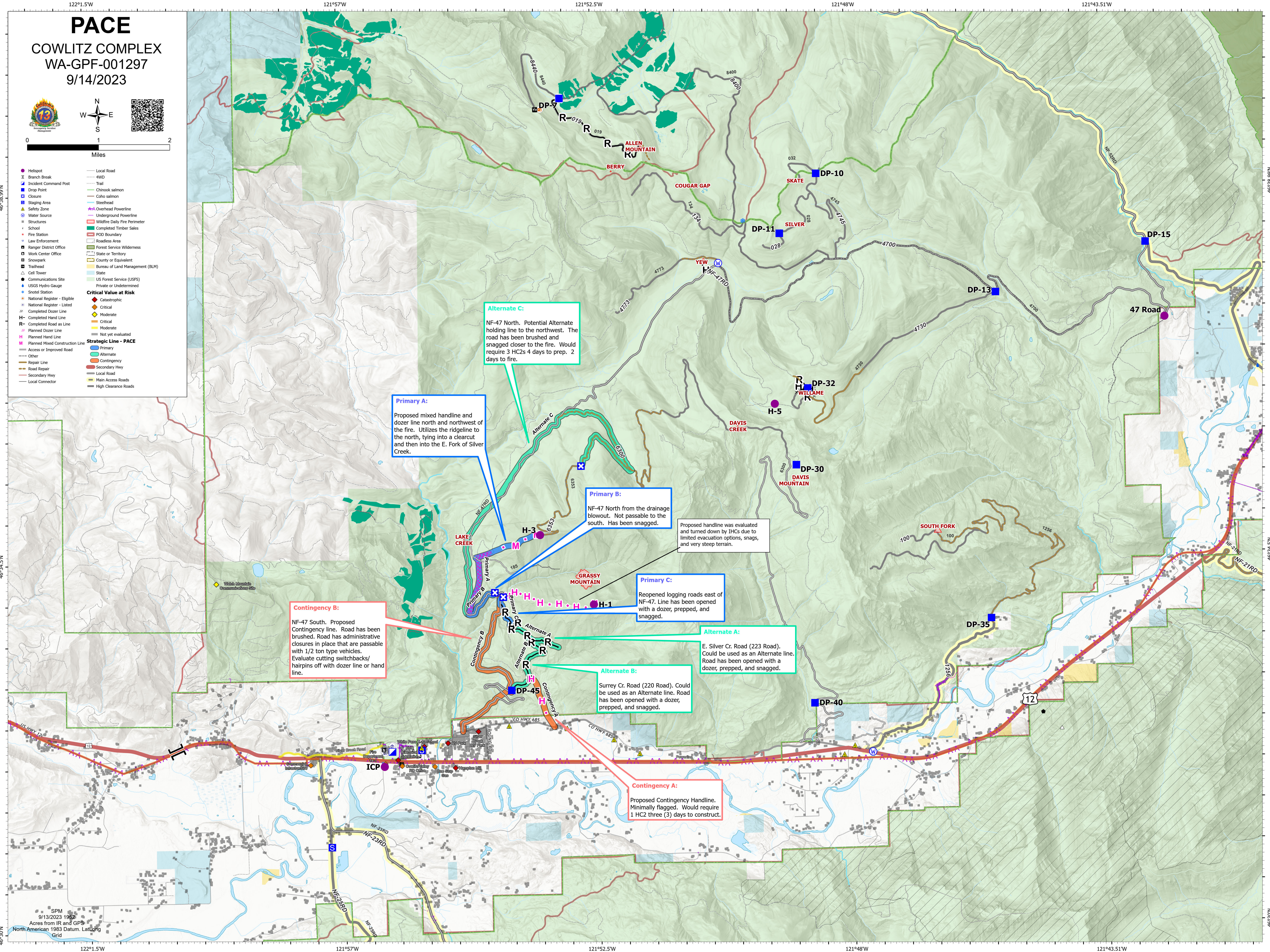
# PACE

COWLITZ COMPLEX  
WA-GPF-001297  
9/14/2023



0 1 2  
Miles

- Helispot
  - ⌘ Branch Break
  - ⌘ Incident Command Post
  - ⌘ Drop Point
  - ⌘ Closure
  - ⌘ Staging Area
  - ⌘ Safety Zone
  - ⌘ Water Source
  - ⌘ Structures
  - ⌘ School
  - ⌘ Fire Station
  - ⌘ Law Enforcement
  - ⌘ Ranger District Office
  - ⌘ Work Center Office
  - ⌘ Snowpark
  - ⌘ Trailhead
  - ⌘ Cell Tower
  - ⌘ Communications Site
  - ⌘ USGS Hydro Gauge
  - ⌘ Snotel Station
  - ⌘ National Register - Eligible
  - ⌘ National Register - Listed
  - ⌘ Completed Dozer Line
  - ⌘ Completed Road as Line
  - ⌘ Planned Dozer Line
  - ⌘ Planned Hand Line
  - ⌘ Planned Mixed Construction Line
  - ⌘ Access or Improved Road
  - ⌘ Other
  - ⌘ Repair Line
  - ⌘ Road Repair
  - ⌘ Secondary Hwy
  - ⌘ Local Road
  - ⌘ Main Access Roads
  - ⌘ High Clearance Roads
- Local Road
  - 4WD
  - Trail
  - Chinook salmon
  - Coho salmon
  - Steelhead
  - Overhead Powerline
  - Underground Powerline
  - Wildfire Daily Fire Perimeter
  - Completed Timber Sales
  - POD Boundary
  - Roadless Area
  - Forest Service Wilderness
  - State or Territory
  - County or Equivalent
  - Bureau of Land Management (BLM)
  - State
  - US Forest Service (USFS)
  - Private or Undetermined
- Critical Value at Risk
  - Catastrophic
  - Critical
  - Moderate
  - Critical
  - Moderate
  - Not yet evaluated
- Strategic Line - PACE
  - Primary
  - Alternate
  - Contingency
  - Secondary Hwy
  - Local Road
  - Main Access Roads
  - High Clearance Roads



**Alternate C:**  
NF-47 North. Potential Alternate holding line to the northwest. The road has been brushed and snagged closer to the fire. Would require 3 HC2s 4 days to prep. 2 days to fire.

**Primary A:**  
Proposed mixed handline and dozer line north and northwest of the fire. Utilizes the ridgeline to the north, tying into a clearcut and then into the E. Fork of Silver Creek.

**Primary B:**  
NF-47 North from the drainage blowout. Not passable to the south. Has been snagged.

Proposed handline was evaluated and turned down by IHCs due to limited evacuation options, snags, and very steep terrain.

**Primary C:**  
Reopened logging roads east of NF-47. Line has been opened with a dozer, prepped, and snagged.

**Contingency B:**  
NF-47 South. Proposed Contingency line. Road has been brushed. Road has administrative closures in place that are passable with 1/2 ton type vehicles. Evaluate cutting switchbacks/hairpins off with dozer line or hand line.

**Alternate A:**  
E. Silver Cr. Road (223 Road). Could be used as an Alternate line. Road has been opened with a dozer, prepped, and snagged.

**Alternate B:**  
Surrey Cr. Road (220 Road). Could be used as an Alternate line. Road has been opened with a dozer, prepped, and snagged.

**Contingency A:**  
Proposed Contingency Handline. Minimally flagged. Would require 1 HC2 three (3) days to construct.