

# Planning

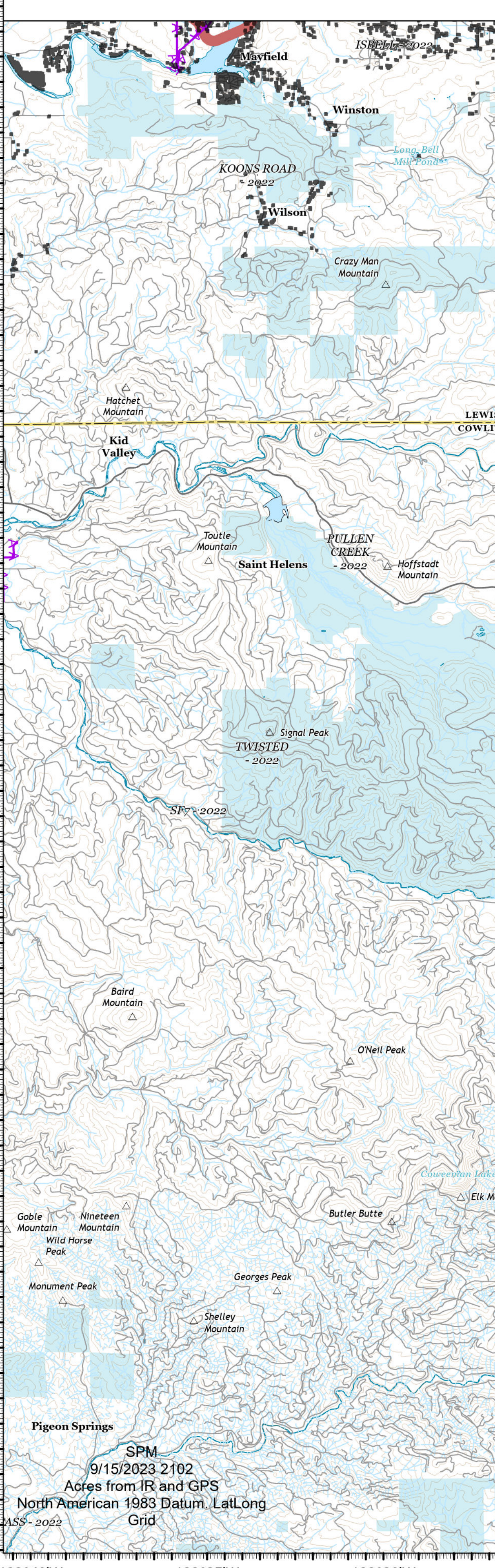
## COWLITZ COMPLEX

### WA-GPF-001297

#### 9/16/2023



- Dip Site
- Hilltop
- Helibase
- Slip Site
- Closure Break
- Branch Break
- Incident Command Post
- Camp
- Staging Area
- Value at Risk
- Repeater
- Safety Zone
- Water Source
- County Structures
- Lookout Station
- School
- Fire Station
- Law Enforcement
- Information Center
- Ranger District Office
- Weather Station
- Work Center Office
- Building Area
- Campground
- Group Campground
- Horse Camp
- State or Territory
- BIA
- Bureau of Land Management (BLM)
- National Park Service (NPS)
- Interpretive Site
- Interpretive Site/Visitor Center
- Lookout Station
- Observation Site
- Organization Site
- Other Recreation Concession Site
- Private Site
- Picnic Site
- Snowpark
- USFS Repeater
- USFS Helibase
- USFS Station
- USFS Station
- National Register - Eligible
- National Register - Listed
- Completed Doser Line
- Completed Hand Line
- Completed Doser Line
- Planned Doser Line
- Planned Fuel Break
- Planned Hand Line
- Planned Hand Construction Line
- Planned Road as Line
- TFR
- Secondary Hwy
- Local Connector
- Local Road
- 4WD
- High Clearance Road
- Fire History
- Initial Attack Responsibility



Incident Name	Acres	Status
ALLEN MOUNTAIN	0.25	OUT
BERRY	0.25	OUT
BERTHA MAY	0.1	OUT
CARLTON RIDGE	15	CONTROLLED
COUGAR GAP	0.1	OUT
DAVIS CREEK	0.1	OUT
DAVIS MOUNTAIN	0.54	CONTROLLED
DEER CREEK	4	OUT
GRASSY MOUNTAIN	28,185,532	ACTIVE
LAKE CREEK	0.1	OUT
POTSOLE	5	CONTROLLED
SILVER	0.1	OUT
SKATE	0.1	OUT
SOUTH FORK	15	CONTROLLED
WILLAME	8	CONTAINED
WILLAME	2	CONTAINED

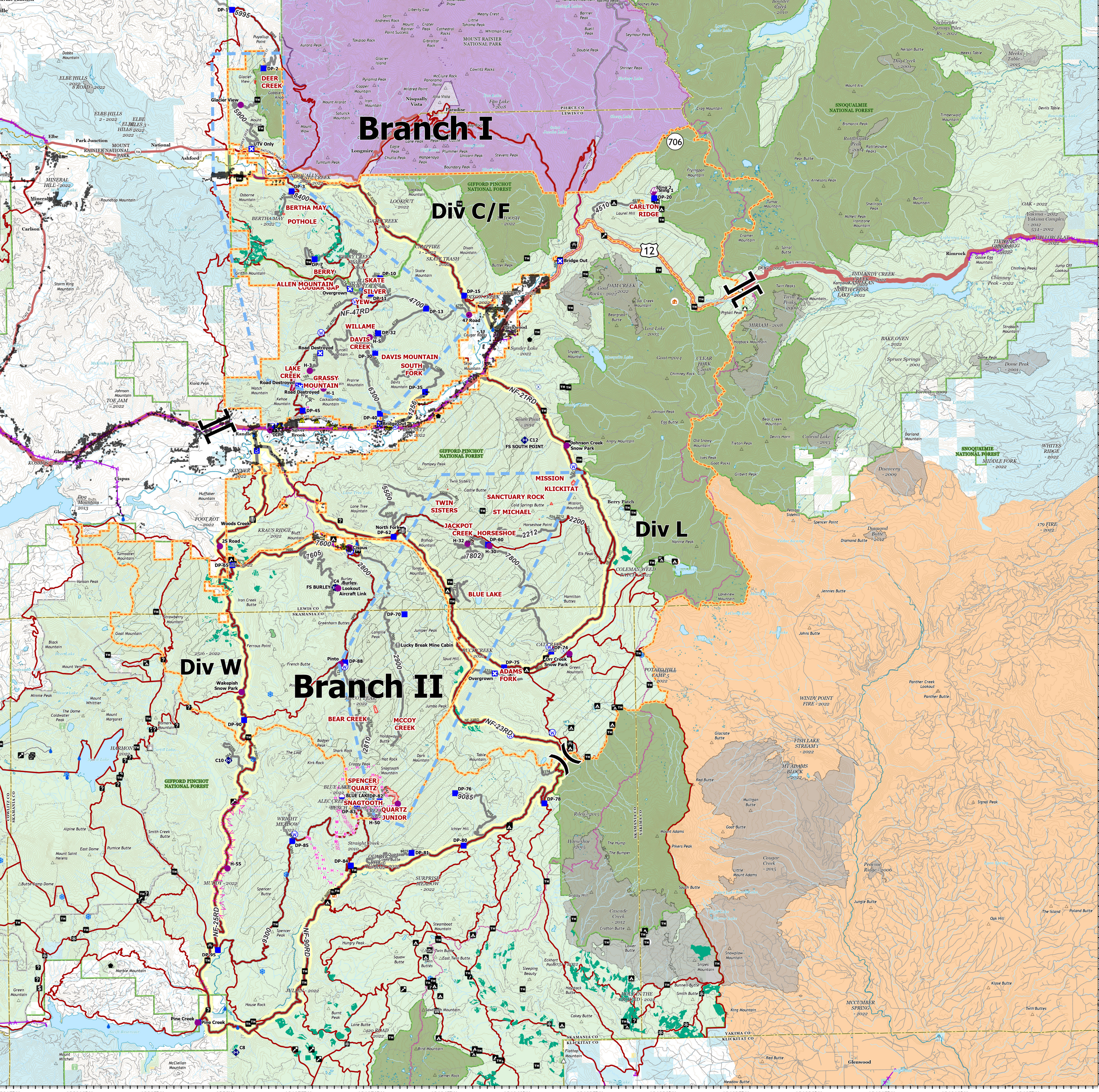
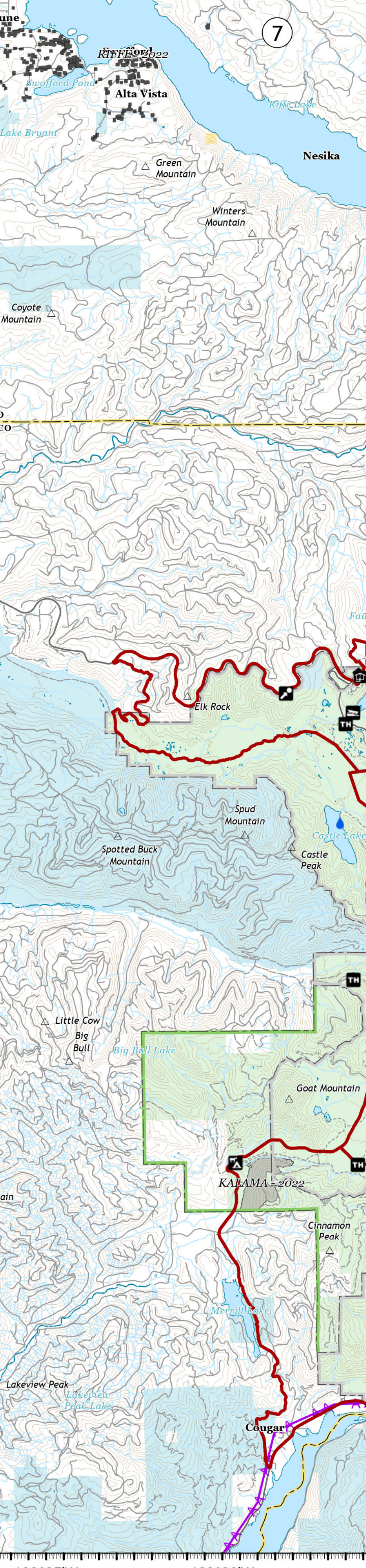
  

Incident Name	Acres	Status
ADAMS FORK	9	CONTROLLED
BLUE LAKE	0.2	OUT
HORSESHOE	0.2	OUT
JACKPOT CREEK	32	CONTROLLED
KLICKITAT	0.5	OUT
MISSION	22	CONTAINED
SANCTUARY ROCK	6	CONTAINED
ST MICHAEL	0.25	OUT
TWIN SISTERS	0.5	OUT

Incident Name	Acres	Status
BEAR CREEK	32	CONTROLLED
MCCOY CREEK	0.25	OUT
QUARTZ JUNIOR	1	ACTIVE
SNAGTOOTH	310,371,329	ACTIVE
SPENCER QUARTZ	190,677,012	ACTIVE

Incident Name	Acres	Status
ADAMS FORK	9	CONTROLLED
BLUE LAKE	0.2	OUT
HORSESHOE	0.2	OUT
JACKPOT CREEK	32	CONTROLLED
KLICKITAT	0.5	OUT
MISSION	22	CONTAINED
SANCTUARY ROCK	6	CONTAINED
ST MICHAEL	0.25	OUT
TWIN SISTERS	0.5	OUT



SPM  
9/15/2023 2:10Z  
Acres from IR and GPS  
North American 1983 Datum, Lat/Long  
Grid