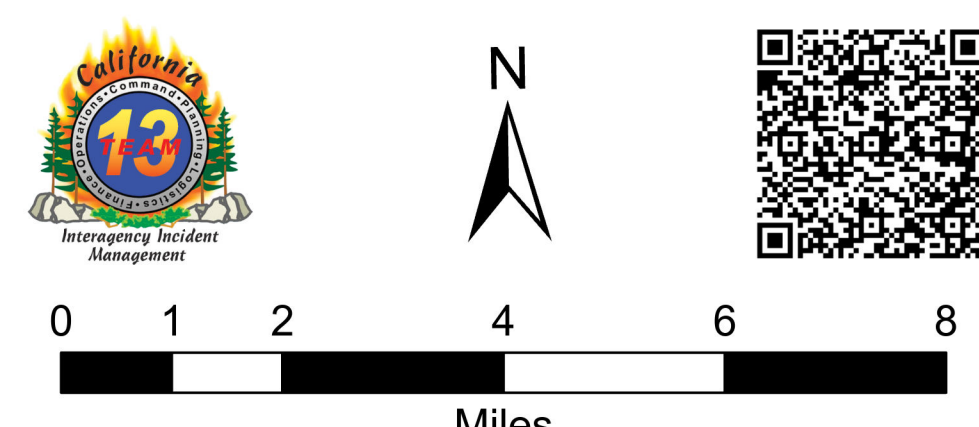


Air Operations

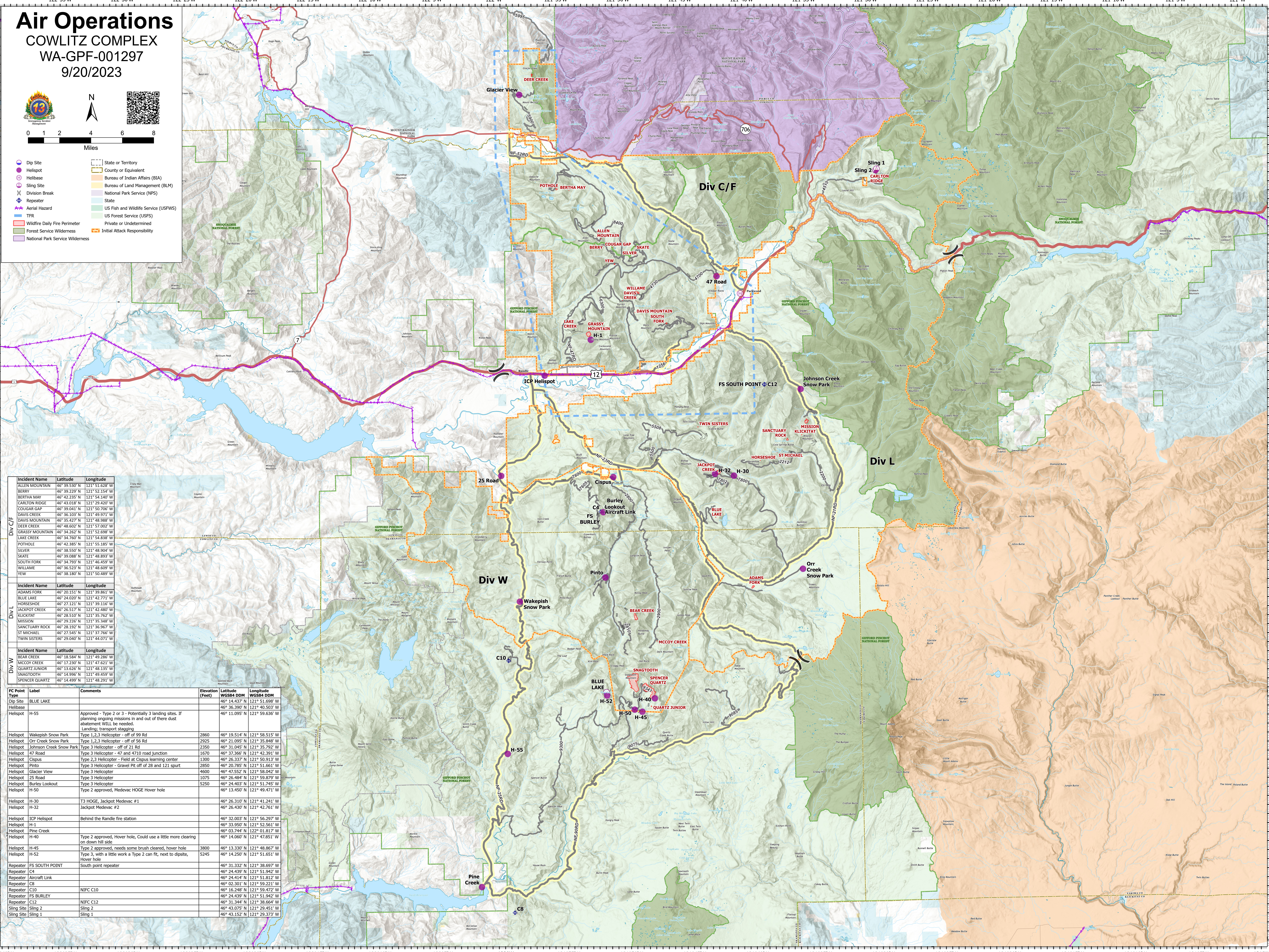
COWLITZ COMPLEX

WA-GPF-001297

9/20/2023



- Dip Site
- Helibase
- Sling Site
- ⌘ Division Break
- ⬇ Repeater
- ✈ Aerial Hazard
- Wildfire Daily Fire Perimeter
- Forest Service Wilderness
- National Park Service Wilderness
- State or Territory
- County or Equivalent
- Bureau of Indian Affairs (BIA)
- Bureau of Land Management (BLM)
- National Park Service (NPS)
- State
- US Fish and Wildlife Service (USFWS)
- US Forest Service (USFS)
- Private or Undetermined
- Initial Attack Responsibility



Incident Name	Latitude	Longitude
ALLEN MOUNTAIN	46° 39.530' N	121° 51.628' W
BERRY	46° 39.229' N	121° 52.154' W
BERTHA MAY	46° 42.235' N	121° 54.140' W
CARLTON RIDGE	46° 43.018' N	121° 29.420' W
COUGAR GAP	46° 39.041' N	121° 50.706' W
DAVIS CREEK	46° 36.103' N	121° 49.971' W
DAVIS MOUNTAIN	46° 35.427' N	121° 48.988' W
DEER CREEK	46° 48.602' N	121° 57.002' W
GRASSY MOUNTAIN	46° 34.262' N	121° 52.698' W
LAKE CREEK	46° 34.760' N	121° 54.838' W
POTHOLE	46° 42.385' N	121° 55.185' W
SILVER	46° 38.550' N	121° 48.904' W
SKATE	46° 39.088' N	121° 48.893' W
SOUTH FORK	46° 34.793' N	121° 46.459' W
WILLAME	46° 36.523' N	121° 48.609' W
YEW	46° 38.180' N	121° 50.489' W

Incident Name	Latitude	Longitude
ADAMS FORK	46° 20.151' N	121° 39.861' W
BLUE LAKE	46° 24.020' N	121° 42.771' W
HORSESHOE	46° 27.121' N	121° 39.116' W
JACKPOT CREEK	46° 26.517' N	121° 42.480' W
KLUKTIAT	46° 28.510' N	121° 55.782' W
MISSION	46° 29.226' N	121° 35.348' W
SANCTUARY ROCK	46° 28.192' N	121° 36.967' W
ST MICHAEL	46° 27.545' N	121° 37.766' W
TWIN SISTERS	46° 29.040' N	121° 44.071' W

Incident Name	Latitude	Longitude
BEAR CREEK	46° 18.584' N	121° 49.286' W
MCCOY CREEK	46° 17.230' N	121° 47.621' W
QUARTZ JUNIOR	46° 13.626' N	121° 48.135' W
SNAGTOOTH	46° 14.998' N	121° 43.659' W
SPENCER QUARTZ	46° 14.499' N	121° 48.291' W

FC Point	Label	Comments	Elevation (feet)	Latitude NGS84 DDM	Longitude WGS84 DDM
Dip Site	BLUE LAKE			46° 14.437' N	121° 51.698' W
Helibase	H-55	Approved - Type 2 or 3 - Potentially 3 landing sites. If planning ongoing missions in and out of there dust abatement WILL be needed. Landing; transport staging		46° 11.095' N	121° 59.636' W
Helispot	Wakepish Snow Park	Type 1,2,3 Helicopter - off of 99 Rd	2860	46° 19.514' N	121° 58.515' W
Helispot	Orr Creek Snow Park	Type 1,2,3 Helicopter - off of 56 Rd	2925	46° 21.095' N	121° 35.848' W
Helispot	Johnson Creek Snow Park	Type 3 Helicopter - off of 21 Rd	2350	46° 31.045' N	121° 35.792' W
Helispot	47 Road	Type 3 Helicopter - 47 and 4710 road junction	1670	46° 37.366' N	121° 42.391' W
Helispot	Cispus	Type 2,3 Helicopter - Field at Cispus learning center	1300	46° 26.337' N	121° 50.913' W
Helispot	Pinto	Type 3 Helicopter - Gravel Pit off of 28 and 121 spurt	2850	46° 20.785' N	121° 51.661' W
Helispot	Glacier View	Type 3 Helicopter	4600	46° 47.552' N	121° 58.042' W
Helispot	25 Road	Type 3 Helicopter	1075	46° 26.484' N	121° 59.879' W
Helispot	Burley Lookout	Type 3 Helicopter	5250	46° 24.403' N	121° 51.745' W
Helispot	H-50	Type 2 approved, Medevac HOGE Hover hole		46° 13.450' N	121° 49.471' W
Helispot	H-30	T3 HOGE, Jackpot Medevac # 1		46° 26.310' N	121° 41.241' W
Helispot	H-32	Jackpot Medevac # 2		46° 26.430' N	121° 42.761' W
Helispot	ICP Helispot	Behind the Randle fire station		46° 32.003' N	121° 56.297' W
Helispot	H-1			46° 33.950' N	121° 52.561' W
Helispot	Pine Creek			46° 03.744' N	122° 01.817' W
Helispot	H-40	Type 2 approved, Hover hole, Could use a little more clearing on down hill side		46° 14.060' N	121° 47.851' W
Helispot	H-45	Type 2 approved, needs some brush cleared, hover hole	3800	46° 13.330' N	121° 48.867' W
Helispot	H-52	Type 3, with a little work a Type 2 can fit, next to dip site, Hover hole	5245	46° 14.250' N	121° 51.651' W
Repeater	FS SOUTH POINT	South point repeater		46° 31.332' N	121° 38.697' W
Repeater	C4			46° 24.439' N	121° 51.942' W
Repeater	Aircraft Link			46° 24.414' N	121° 51.812' W
Repeater	C8			46° 02.301' N	121° 59.221' W
Repeater	C10	NIFC C10		46° 16.248' N	121° 59.472' W
Repeater	FS BURLEY			46° 24.439' N	121° 51.942' W
Repeater	C12	NIFC C12		46° 31.344' N	121° 38.664' W
Sling Site	Sling 2			46° 43.075' N	121° 29.451' W
Sling Site	Sling 1			46° 43.152' N	121° 29.373' W