

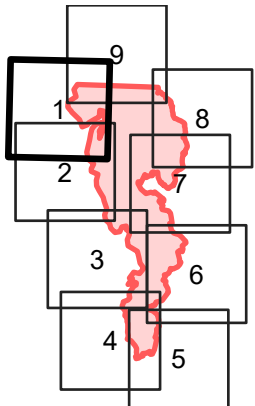
IAP

Eagle Bluff
WA-NES-001759
July 31, 2023

9,745 acres at July 30 @ 0845

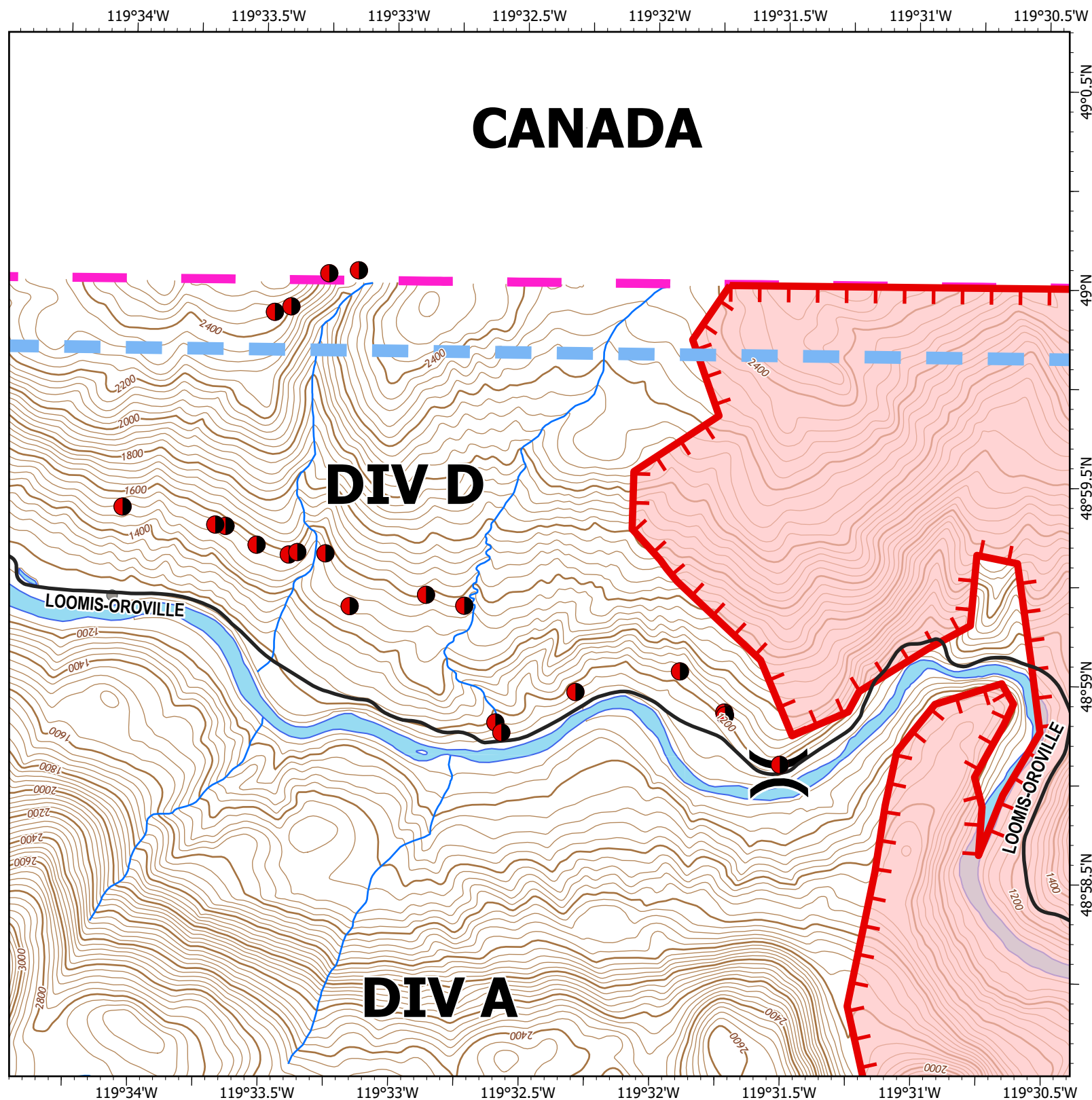
Page 1 of 9

- () Division Break
- Temporary Flight Restriction
- Uncontained
- Wildfire Daily Fire Perimeter
- County
- USA / CANADIAN BORDER
- Address Points
- Oro Night Hazards



0 0.17 0.35 0.7

Miles



CANADA

DIV D

DIV A

LOOMIS-OROVILLE

LOOMIS-OROVILLE

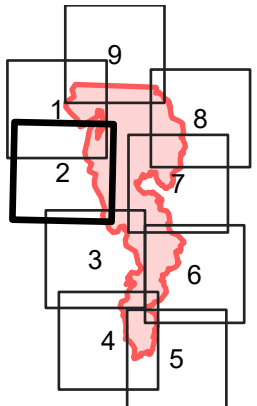
IAP

Eagle Bluff
WA-NES-001759
July 31, 2023

9,745 acres at July 30 @ 0845

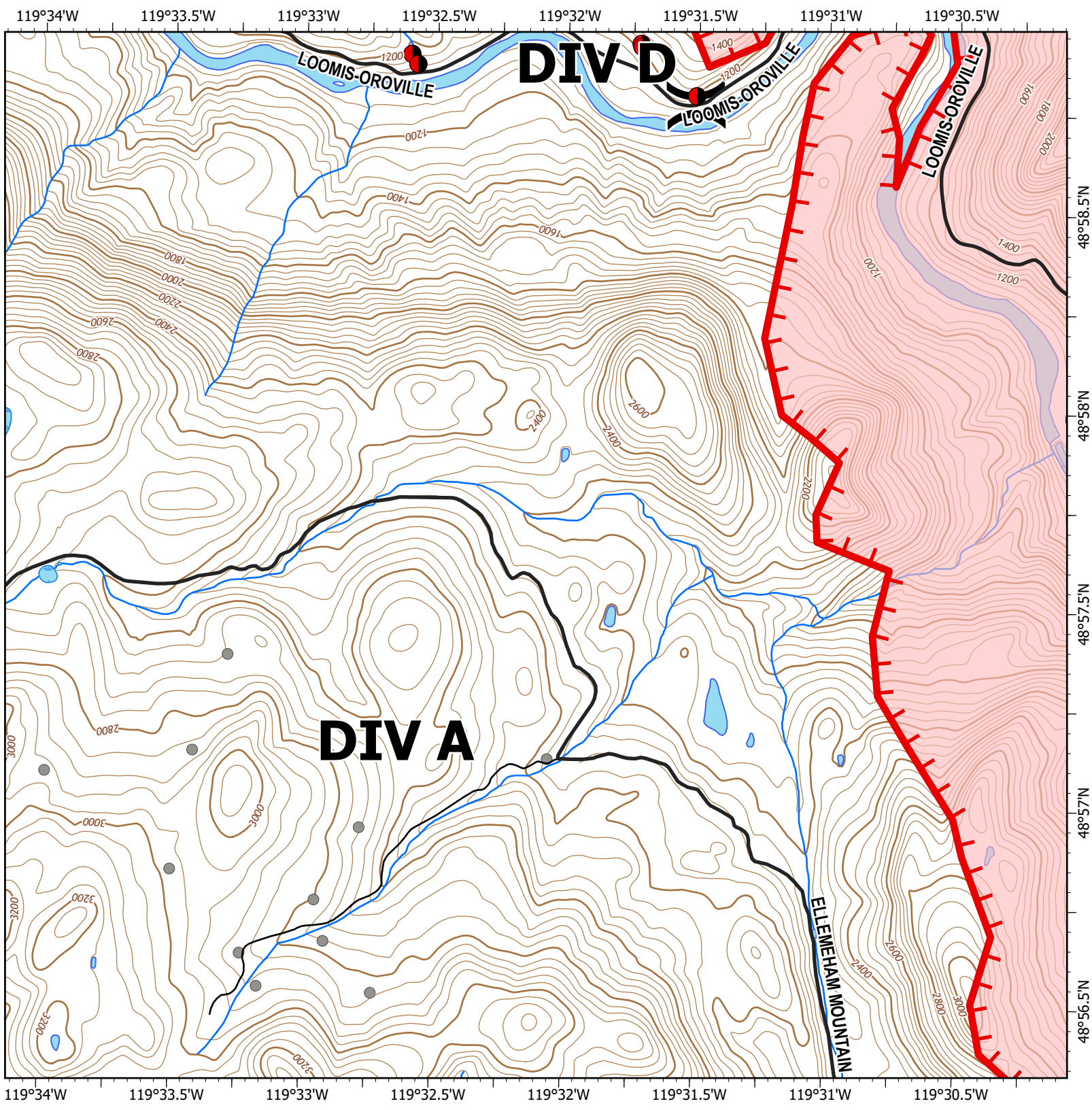
Page 2 of 9

-  Division Break
-  Uncontained
-  Wildfire Daily Fire Perimeter
-  County
-  Private
-  USA / CANADIAN BORDER
-  Address Points
-  Oro Night Hazards



0 0.17 0.35 0.7

Miles





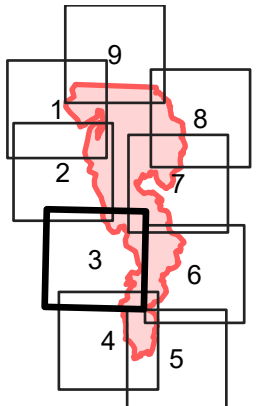
IAP

Eagle Bluff
WA-NES-001759
July 31, 2023

9,745 acres at July 30 @ 0845

Page 3 of 9

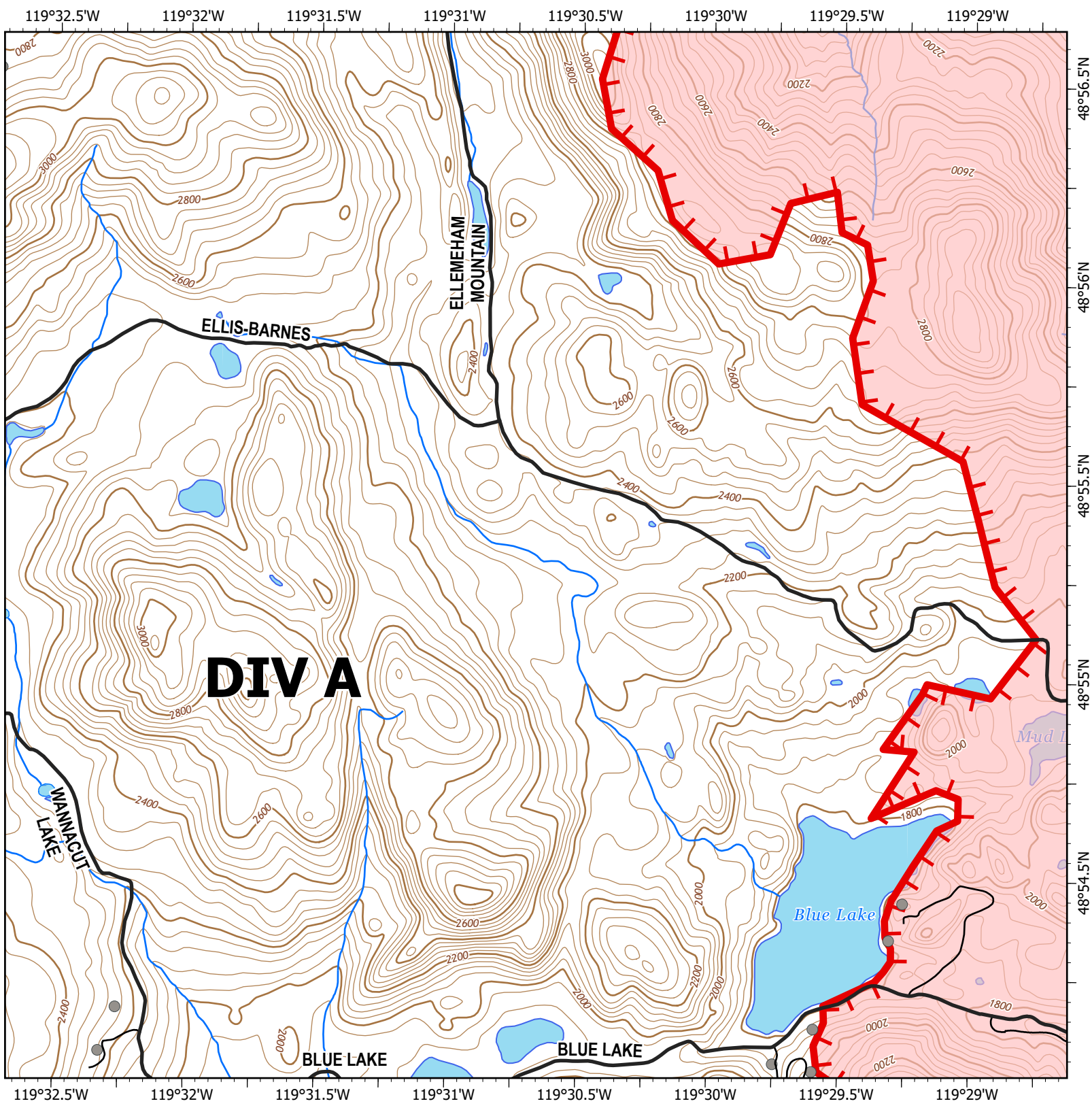
-  Uncontained
-  Wildfire Daily Fire Perimeter
-  County
-  Private
-  USA / CANADIAN BORDER
-  Address Points



0 0.17 0.35 0.7



Miles



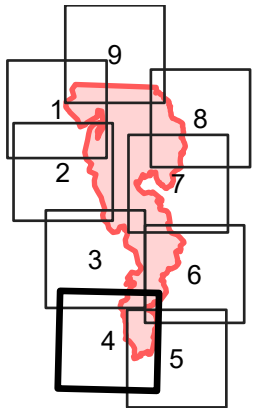
IAP

Eagle Bluff
WA-NES-001759
July 31, 2023

9,745 acres at July 30 @ 0845

Page 4 of 9

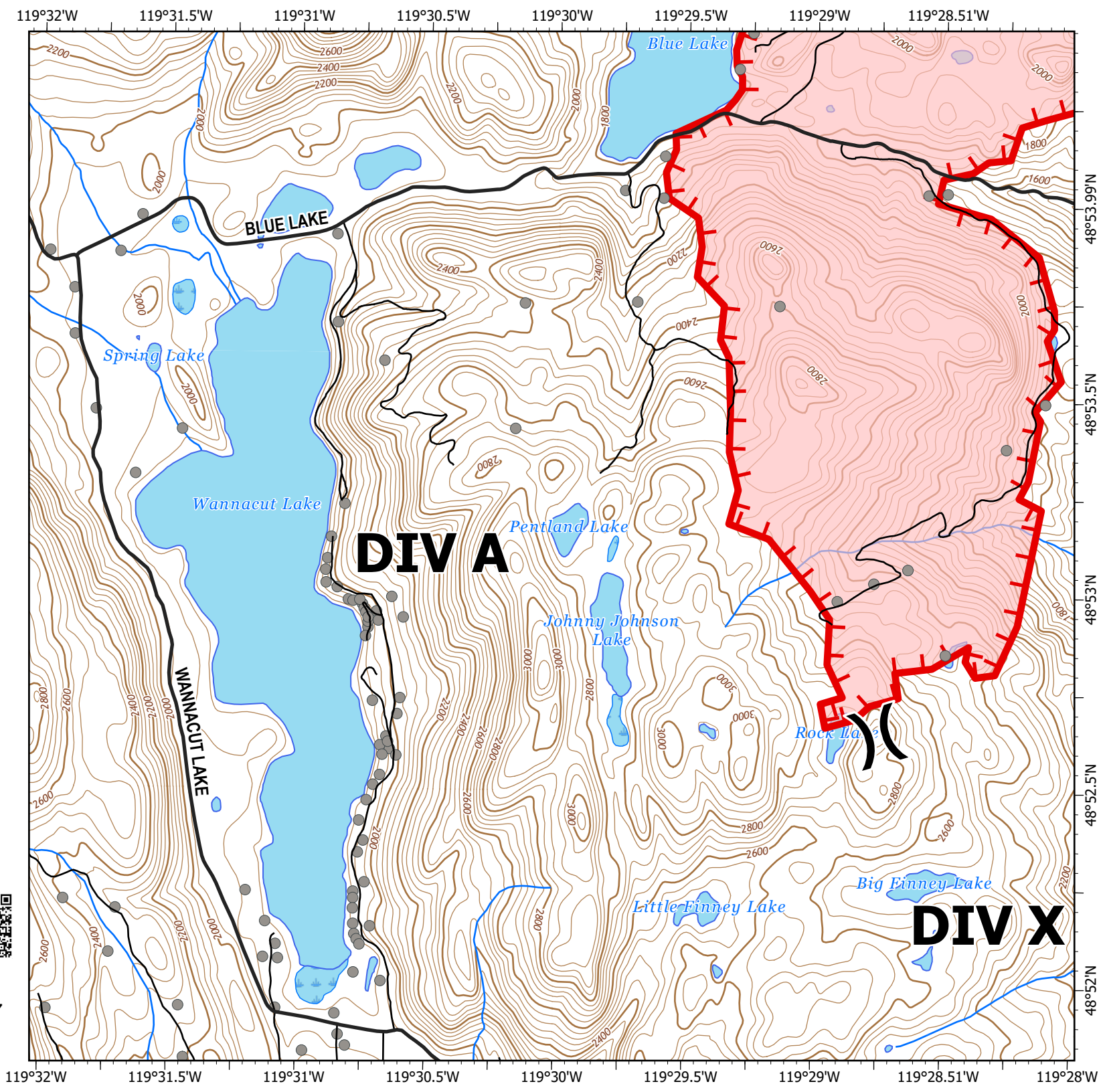
- () Division Break
- ▬ Uncontained
- ▭ Wildfire Daily Fire Perimeter
- ▬ County
- ▬ Private
- USA / CANADIAN BORDER
- Address Points



0 0.17 0.35 0.7



Miles



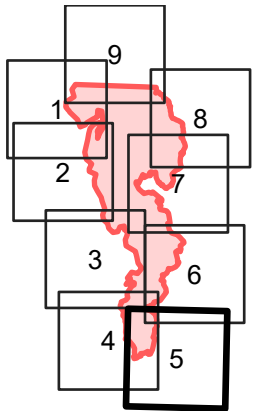
IAP

Eagle Bluff
WA-NES-001759
July 31, 2023

9,745 acres at July 30 @ 0845

Page 5 of 9

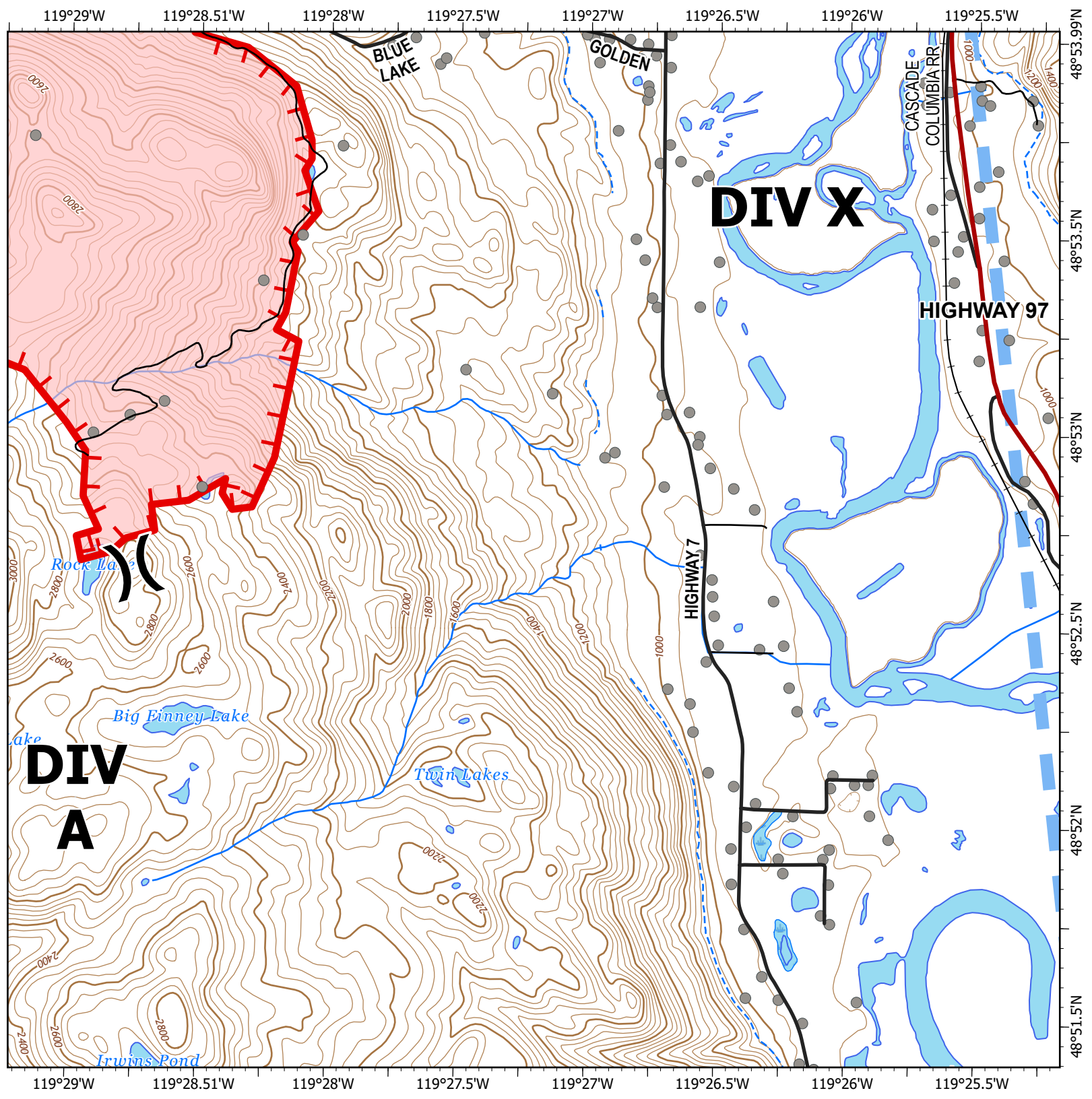
- () Division Break
- Temporary Flight Restriction
- Uncontained
- Wildfire Daily Fire Perimeter
- State
- County
- Private
- Railroad
- USA / CANADIAN BORDER
- Address Points



0 0.17 0.35 0.7



Miles




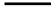



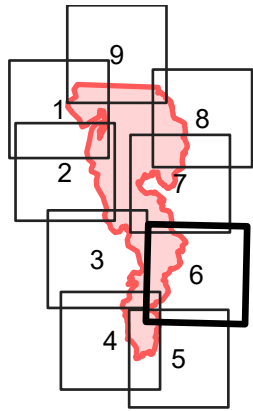
IAP

Eagle Bluff
WA-NES-001759
July 31, 2023

9,745 acres at July 30 @ 0845

Page 6 of 9

-  Temporary Flight Restriction
-  Uncontained
-  Wildfire Daily Fire Perimeter
-  State
-  County
-  Private
-  Town
-  Railroad
-  USA / CANADIAN BORDER
-  Address Points

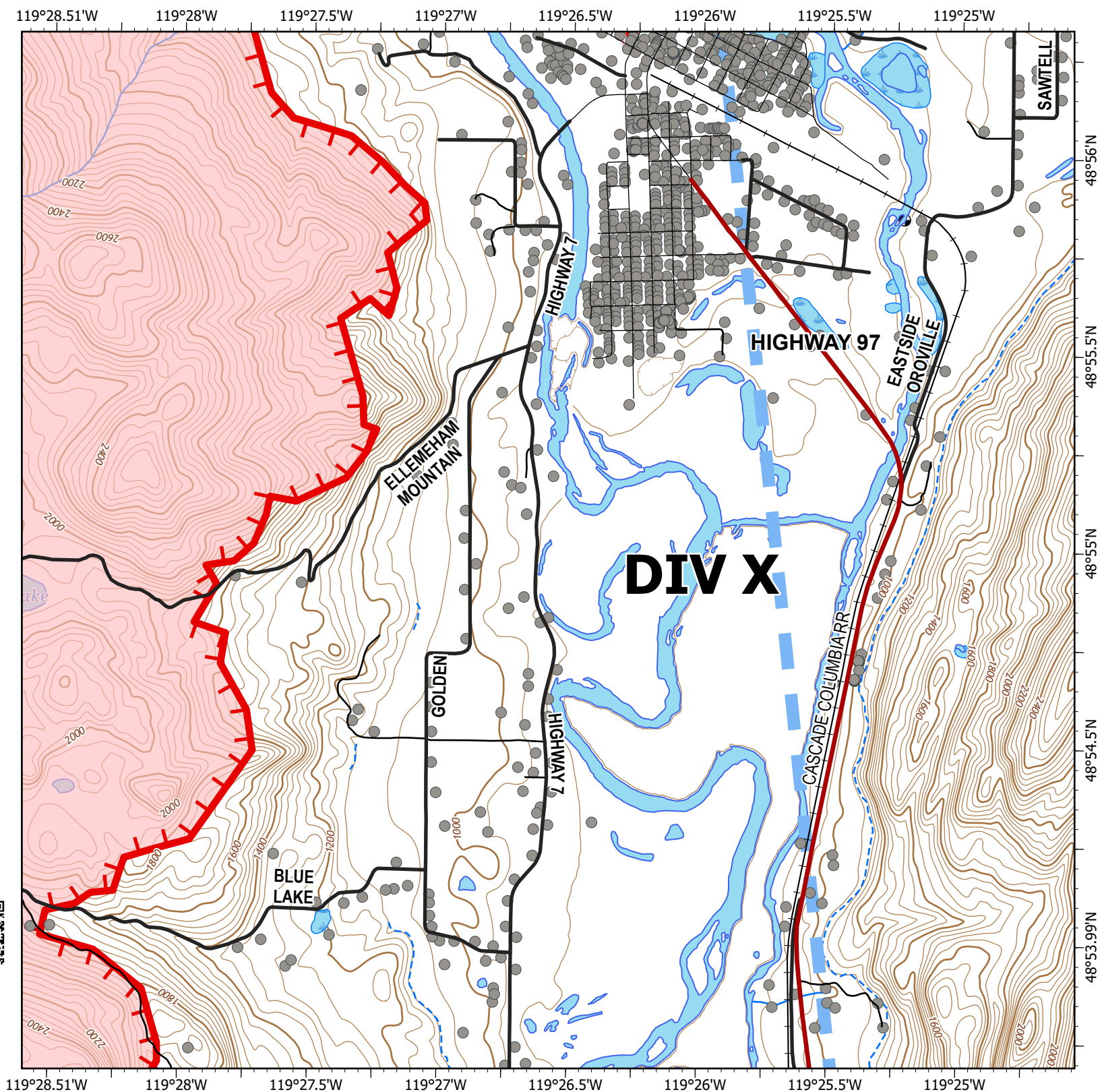


0 0.17 0.35 0.7



Miles

apb
7/30/2023 1847
North American 1983 Datum.
Lat/Long Grid



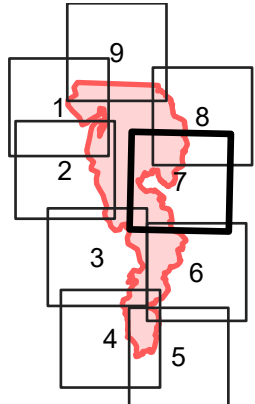
IAP

Eagle Bluff
WA-NES-001759
July 31, 2023

9,745 acres at July 30 @ 0845

Page 7 of 9

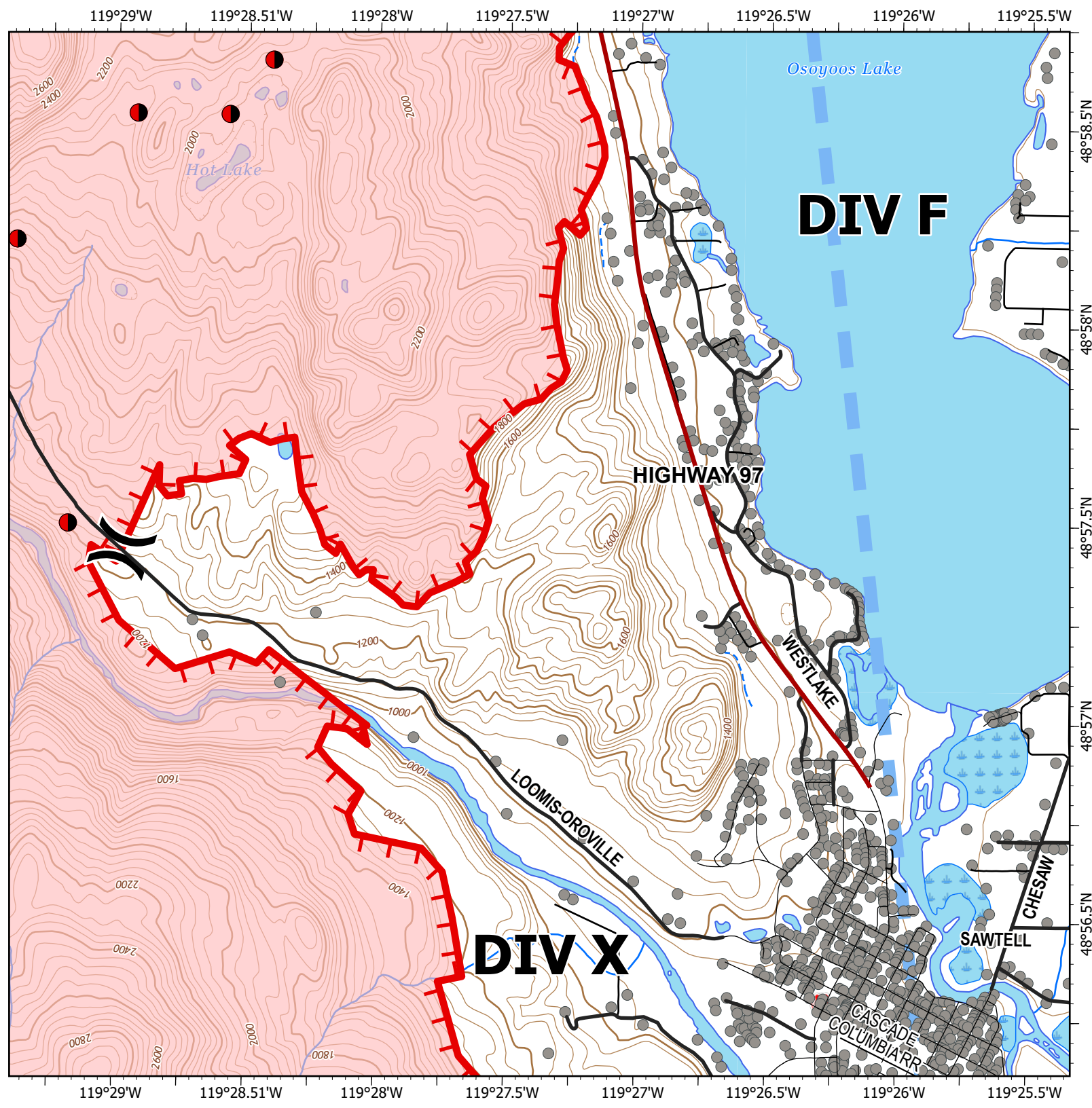
- () Division Break
- Temporary Flight Restriction
- Uncontained
- Wildfire Daily Fire Perimeter
- State
- County
- Private
- Town
- Railroad
- USA / CANADIAN BORDER
- Address Points
- Oro Night Hazards



0 0.17 0.35 0.7



Miles



119°28.51'W 119°28'W 119°27.5'W 119°27'W 119°26.5'W 119°26'W 119°25.5'W 119°25'W

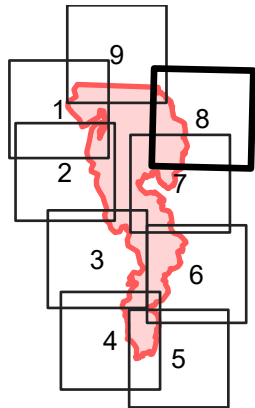
IAP

Eagle Bluff
WA-NES-001759
July 31, 2023

9,745 acres at July 30 @ 0845

Page 8 of 9

-  Temporary Flight Restriction
-  Uncontained
-  Wildfire Daily Fire Perimeter
-  State
-  County
-  Private
-  USA / CANADIAN BORDER
-  Address Points
-  Oro Night Hazards

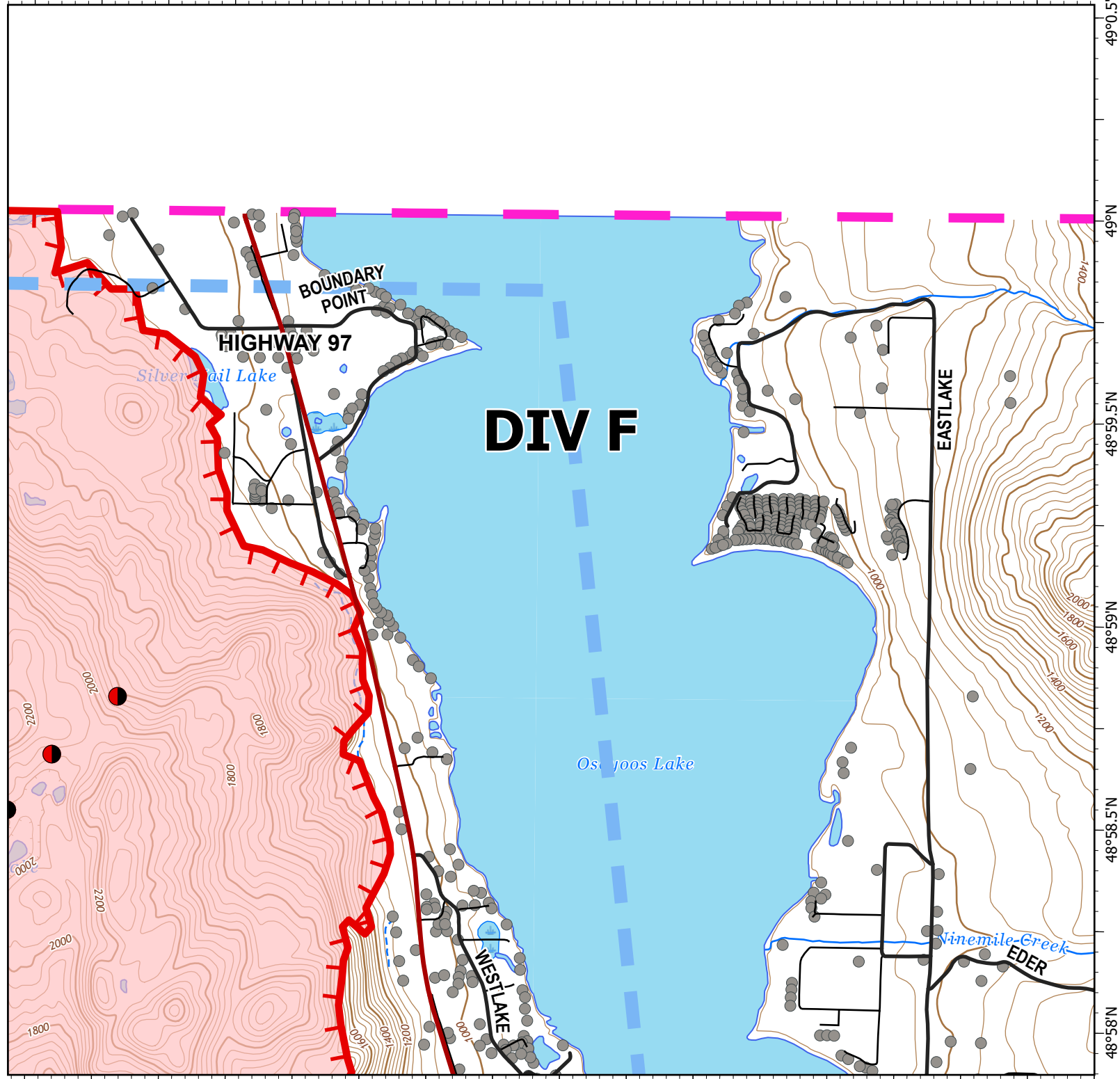


0 0.17 0.35 0.7



Miles

apb
7/30/2023 1847
North American 1983 Datum.
Lat/Long Grid



119°28.51'W 119°28'W 119°27.5'W 119°27'W 119°26.5'W 119°26'W 119°25.5'W 119°25'W 119°24.5'W

49°0.5'N
48°59.5'N
48°59'N
48°58.5'N
48°58'N

119°32'W 119°31.5'W 119°31'W 119°30.5'W 119°30'W 119°29.5'W 119°29'W 119°28.51'W

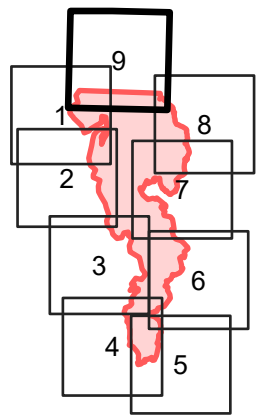
IAP

Eagle Bluff
WA-NES-001759
July 31, 2023

9,745 acres at July 30 @ 0845

Page 9 of 9

-  Division Break
-  Temporary Flight Restriction
-  Uncontained
-  Wildfire Daily Fire Perimeter
-  County
-  Private
-  USA / CANADIAN BORDER
-  Address Points
-  Oro Night Hazards

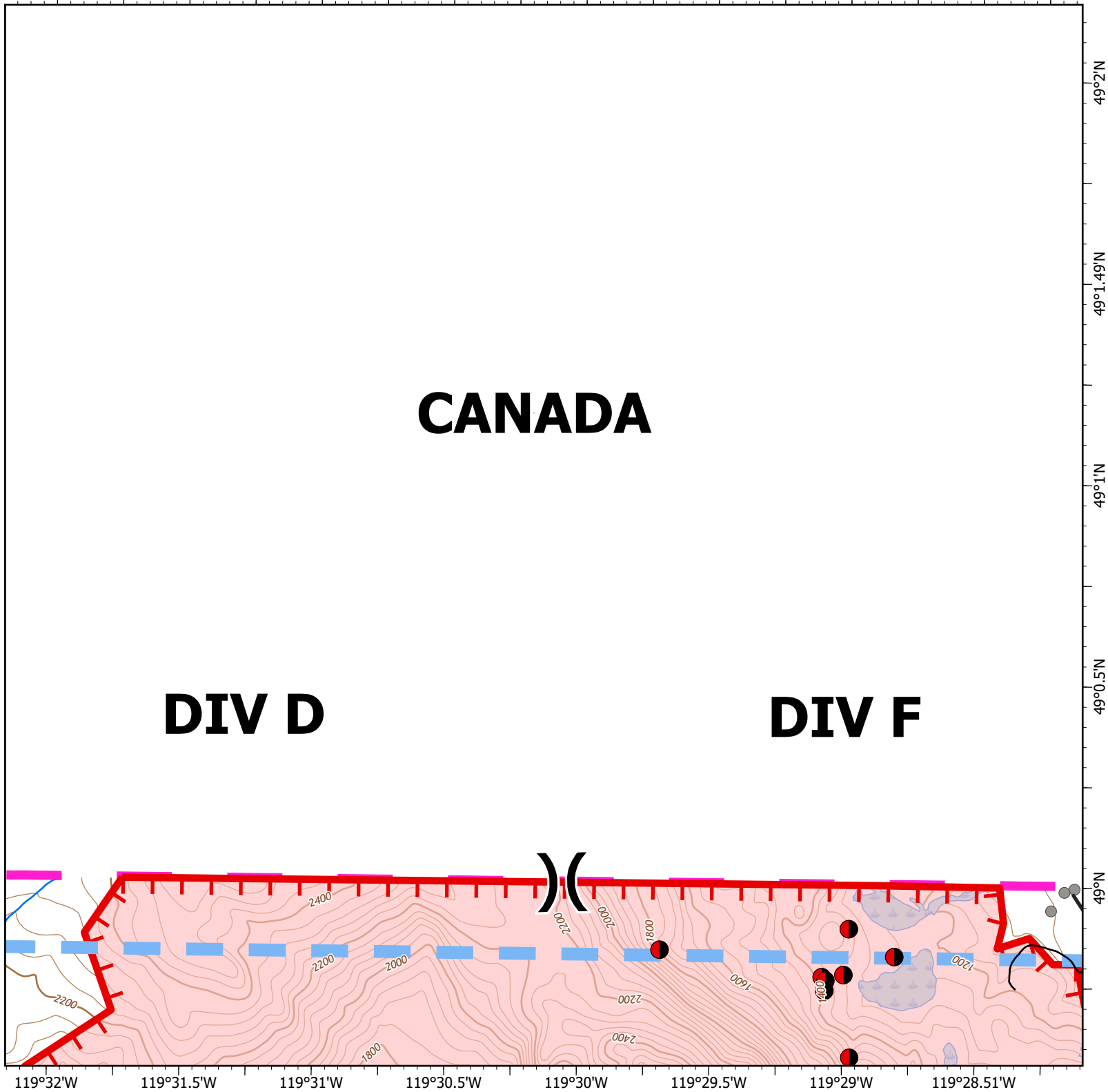


0 0.17 0.35 0.7



Miles

apb
7/30/2023 1847
North American 1983 Datum.
LatLong Grid



CANADA

DIV D

DIV F

119°32'W 119°31.5'W 119°31'W 119°30.5'W 119°30'W 119°29.5'W 119°29'W 119°28.51'W

49°2'N
49°1.49'N
49°1'N
49°0.5'N
49°0'N