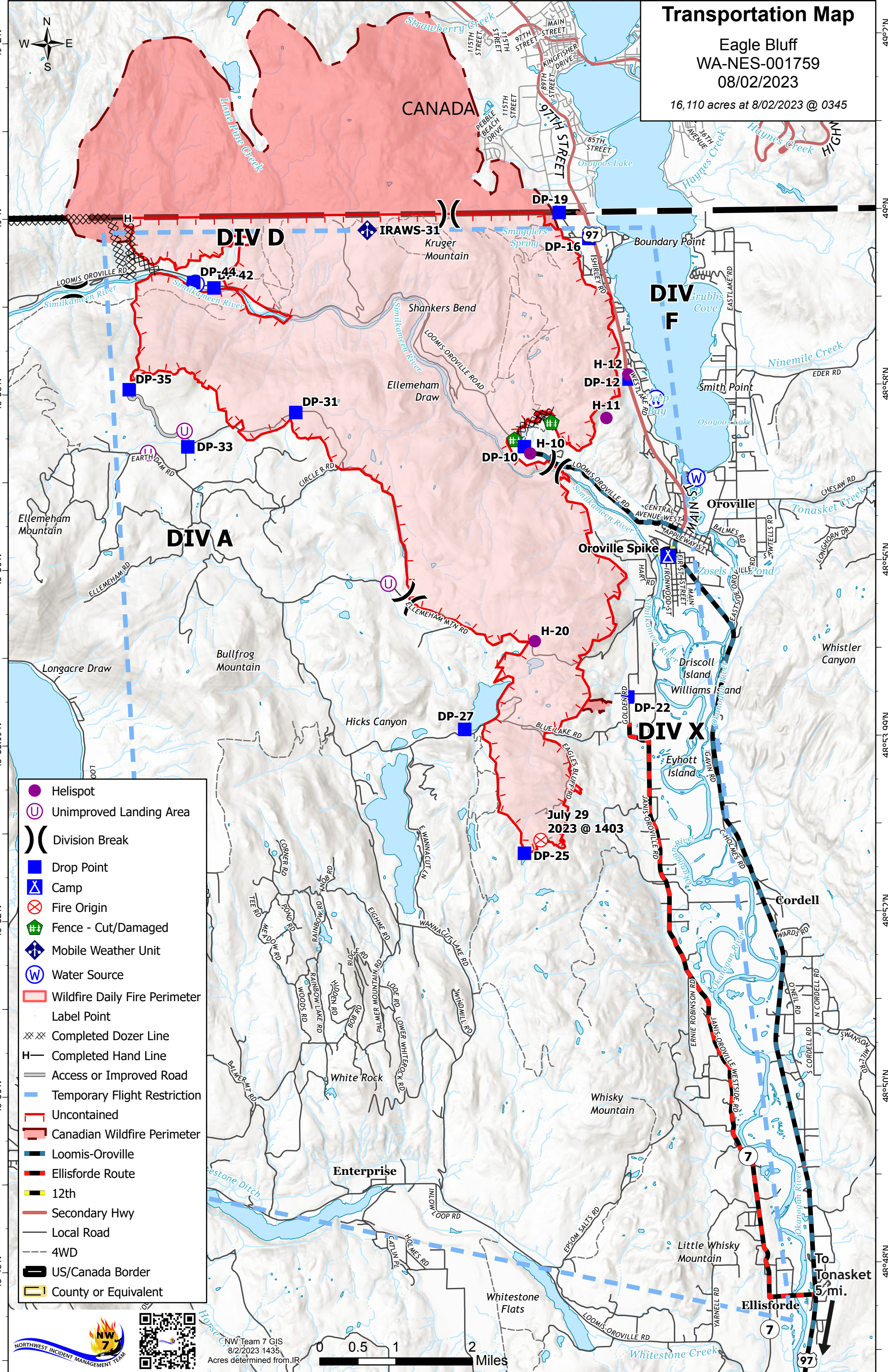


Transportation Map

Eagle Bluff
WA-NES-001759
08/02/2023

16,110 acres at 8/02/2023 @ 0345



- Helispot
- Unimproved Landing Area
- ⌋ Division Break
- Drop Point
- ⚓ Camp
- ⊗ Fire Origin
- ⊕ Fence - Cut/Damaged
- ⚓ Mobile Weather Unit
- Ⓜ Water Source
- ▭ Wildfire Daily Fire Perimeter
- Label Point
- ⊗ Completed Dozer Line
- H Completed Hand Line
- Access or Improved Road
- Temporary Flight Restriction
- ▭ Uncontained
- ▭ Canadian Wildfire Perimeter
- ▭ Loomis-Oroville
- ▭ Ellisforde Route
- ▭ 12th
- ▭ Secondary Hwy
- ▭ Local Road
- ▭ 4WD
- ▭ US/Canada Border
- ▭ County or Equivalent

 NW Team 7 GIS
8/2/2023 1435
Acres determined from J.R.



To Tonasket 5 mi.