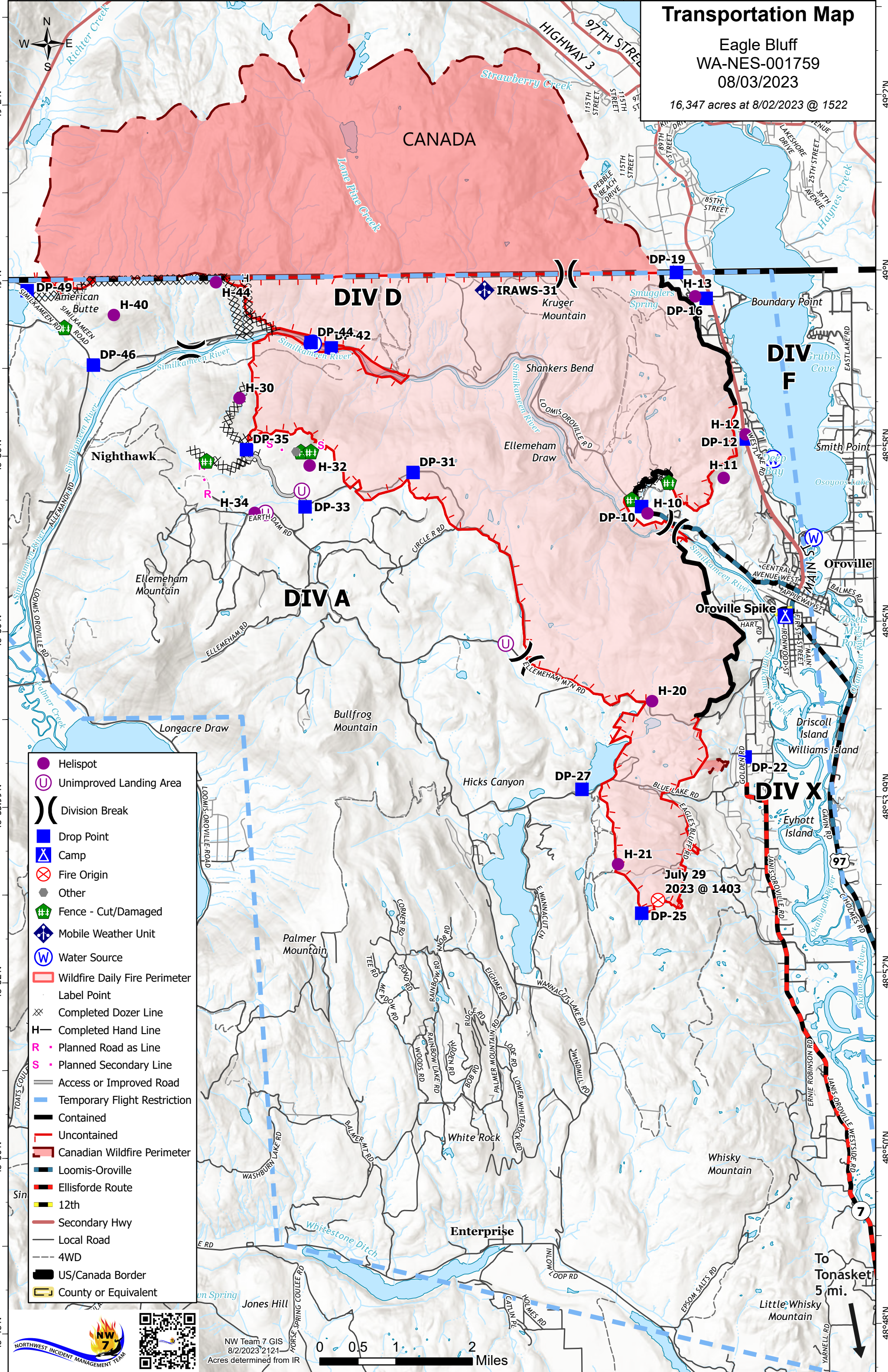


Transportation Map

Eagle Bluff
WA-NES-001759
08/03/2023

16,347 acres at 8/02/2023 @ 1522



- Helispot
- Ⓢ Unimproved Landing Area
- ⌋ Division Break
- Drop Point
- ▲ Camp
- ⊗ Fire Origin
- Other
- ⊞ Fence - Cut/Damaged
- ◆ Mobile Weather Unit
- Ⓜ Water Source
- ▭ Wildfire Daily Fire Perimeter
- Label Point
- ⊗ Completed Dozer Line
- Completed Hand Line
- Planned Road as Line
- Planned Secondary Line
- Access or Improved Road
- Temporary Flight Restriction
- Contained
- Uncontained
- Canadian Wildfire Perimeter
- Loomis-Oroville
- Ellisforde Route
- 12th
- Secondary Hwy
- Local Road
- 4WD
- US/Canada Border
- County or Equivalent



NW Team 7 GIS
8/2/2023 212:1
Acres determined from IR



To Tonasket
5 mi.