

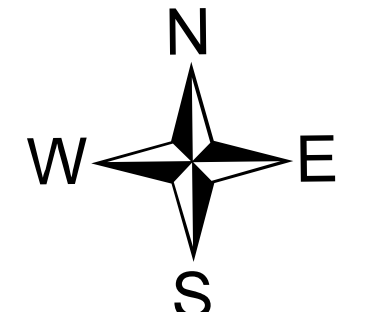
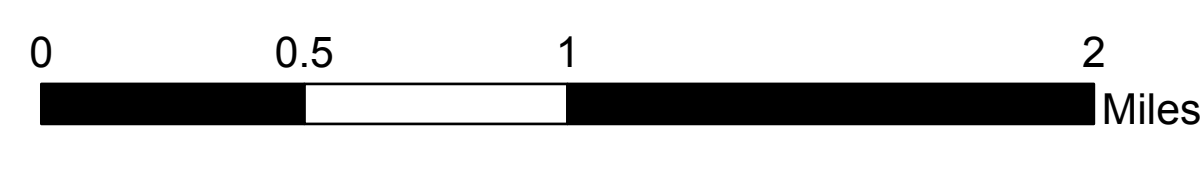
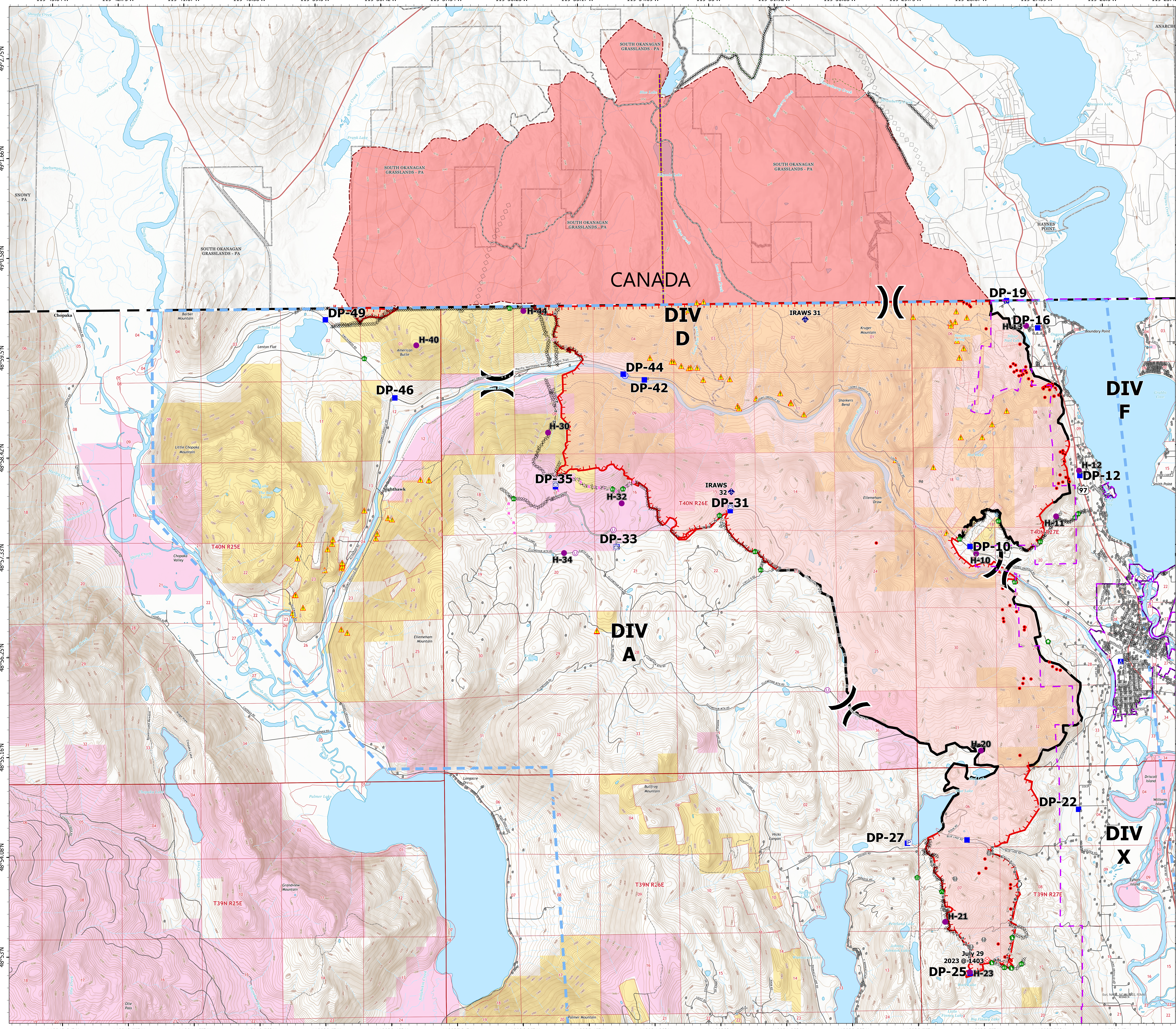
OPS Map

Eagle Bluff
WA-NES-001759
08/04/2023

16,428 acres as of 8/02/2023 @ 1522

- Helispot
- Unimproved Landing Area
- ⌋ Division Break
- Drop Point
- ⊠ Camp
- ⊗ Fire Origin
- ⚠ Value at Risk
- ⬢ Other
- 🏠 Structure Wrap
- 🛠 Road Repair
- 🚧 Fence - Cut/Damaged
- 🚧 Dozer Push
- 🚧 Culvert
- 🚚 Mobile Weather Unit
- 🌊 Water Source
- 🔥 Wildfire Daily Fire Perimeter
- 📍 Address Points
- ⚠ AML Hazards
- 🚰 Pump
- 🚰 Water Tank
- IR Isolated Heat Source
- 🚧 Completed Dozer Line
- 🚧 Completed Hand Line
- 🚧 Completed Road as Line
- 🚧 Planned Road as Line
- 🚧 Planned Secondary Line
- 🚧 Access or Improved Road
- 🚧 Temporary Flight Restriction
- 🚧 Fire Edge (Field Collection)
- 🚧 Contained
- 🚧 Uncontained
- 🚧 US/Canada Border
- 🚧 County
- 🚧 State
- 🚧 Forest Service
- 🚧 BLM
- 🚧 Parks (Canada)
- 🚧 Secondary Hwy
- 🚧 Local Road
- 🚧 4WD
- 🚧 Trail
- 🚧 OKANOGAN COUNTY F.P.D. 1
- 🚧 OROVILLE

- ### Canadian Wildfire Layers
- 🚧 Trail
 - 🚧 Road - Modified Existing
 - 🚧 Road
 - 🚧 Division Break
 - 🚧 Completed Machine Line
 - 🚧 Completed Handline
 - 🚧 Aerial Retardant Drop
 - 🚧 Canadian Wildfire Perimeter



July 29
2023 @ 1403